

Wilderness Inventory Unit Index of Documents
McDermitt Creek OR-036-051, 10 total pages

Page 1: Index Cover Sheet

[Page 2: Form 1 – Documentation of BLM Wilderness Inventory: Findings on Record](#)

[Page 5: Form 2 – Documentation of Current Wilderness Inventory Conditions](#)

[Page 8: Form 2 – Summary of Findings and Conclusion](#)

[Page 9: Wilderness Characteristics Overview–McDermitt Creek OR-036-051 Map 1](#)

[Page 10: Wilderness Characteristics-Land Treatments-McDermitt Creek OR-036-051 Map 2 of 2](#)

Prepared by:
U.S. Department of the Interior
Bureau of Land Management
Vale District Office
100 Oregon Street
Vale, Oregon 97918



H-6300-1-WILDERNESS INVENTORY MAINTENANCE IN BLM OREGON/WASHINGTON

APPENDIX B – INVENTORY AREA EVALUATION

Evaluation of Current Conditions:

- 1) Document and review the existing BLM wilderness inventory findings on file, if available, regarding the presence or absence of individual wilderness characteristics, using Form 1, below.
- 2) Consider relevant information regarding current conditions available in the office to identify and describe any changes to the existing information (use interdisciplinary (ID) team knowledge, aerial photographs, field observations, maps, etc.), and document your findings on Form 2, below.

When Citizen Information has been submitted regarding wilderness characteristics, document the submitted materials including: date of Submission; Name of District(s) and Field Office(s) Affected; Type of material Submitted (e.g. narrative, map, photo). Evaluate any submitted citizen information regarding the validity of proposed boundaries of the unit(s), the existence of roads and other boundary features, the size of the unit(s), and the presence or absence of wilderness characteristics based on relevant information available in the office (prior BLM inventories, ID team knowledge, aerial photographs, field observations, maps, etc.)

Conduct field reviews as necessary to verify information and to ascertain current conditions. Reach conclusions on current conditions including boundaries, size of areas and presence or absence of wilderness characteristics. Fully explain the basis for each conclusion on form 2, including any critical differences between BLM and citizen information.

Document your findings regarding current conditions for each inventoried area. Describe how the present conditions are similar to, or have changed from, the conditions documented in the original wilderness inventory. Document your findings on Form 2 for each inventory area. Cite to or attach data considered, including photographs, maps, GIS layers, field trip notes, project files, *etc.*

Year: 2009 Unit Number/Name: OR-036-051 -- McDermitt Creek

FORM 1 -- DOCUMENTATION OF BLM WILDERNESS INVENTORY FINDINGS ON RECORD

1. Is there existing BLM wilderness inventory information on all or part of this area?

Yes X No _____ (If yes, and if more than one unit is within the area, list the names of those units.):

NOTE: A 1970's BLM-generated mylar overlay map of Vale District's Southern (i.e. Jordan) RA Unit Resource Analysis / Management Framework Plan (URA/MFP) planning effort depicts this area to be within a larger OR-03-12-03 wilderness characteristics (WC) inventory unit. However, no associated supporting written documentation regarding this original unit can be located in Vale District files at this time. Furthermore, the area within OR-03-12-03 that, in part, represents the present OR-036-051 WC inventory unit is not addressed in any of the late 1970's OR BLM WC inventory decision documents and is not displayed with a WC identifier number on any of their affiliated decision maps.

A.) **Inventory Source(s)** -- (X) Denotes all applicable BLM Inventory files, printed maps, or published BLM Decision documents with information pertaining to this unit.

SEE "NOTE", ABOVE.

Wilderness Inventories

- (X) 1978-1980 – Within BLM Wilderness Inventory Unit OR-03-12-03 (unpublished BLM document map located in Vale, OR BLM District office).
See "NOTE", above, under "1."
- () April 1979 – *Wilderness -- Proposed Initial Inventory – Roadless Areas and Islands Which Clearly Do Not have Wilderness Characteristics, Oregon and Washington*

Wilderness Decision Documents

See "NOTE", above, under "1."

- () August 1979 – *Wilderness Review – Initial Inventory, Final Decision on Public Lands Obviously Lacking Wilderness Characteristics and Announcement of Public Lands to be Intensively Inventoried for Wilderness Characteristics, Oregon and Washington* (green document)
- () October 1979 – *Wilderness Review – Intensive Inventory - Oregon, Proposed Decision on the Intensive Wilderness Inventory of Selected Areas* (grey document)
- () March 1980 – *Wilderness Review – Intensive Inventory; Final Decisions on 30 Selected Units in Southeast Oregon and Proposed Decisions on Other Intensively Inventoried Units in Oregon and Washington* (orange document)
- () November 1980 - *Wilderness Inventory – Oregon and Washington, Final Intensive Inventory Decisions* (brown document)
- () November 1981 *Stateline Intensive Wilderness Inventory Final Decision, Oregon, Idaho, Nevada, Utah* (tan document)

B.) Inventory Unit Name(s)/Number(s)

Within and part of the larger BLM OR-03-12-03 WC inventory unit. See **“NOTE”**, above, under **“1.”**.

C) Map Name(s)/Number(s)

See **“NOTE”**, above, under **“1.”**.

- () Final Decision – Initial Wilderness Inventory Map, August 1979, Oregon
- () Proposed Decision -- Intensive Wilderness Inventory of Selected Areas Map, October 1979, Oregon
- () Intensive Wilderness Inventory Map, March 1980, Oregon
- () Intensive Wilderness Inventory --Final Decisions Map, November 1980, Oregon
- () November, 1981 *Stateline Intensive Wilderness Inventory Final Decision, Oregon, Idaho, Nevada, Utah* (tan document)

D.) BLM District(s)/Field Office(s)

Vale District/Jordan Resource Area

2. BLM Inventory Findings on Record

(Existing inventory information regarding wilderness characteristics (if more than one BLM inventory unit is associated with the area, list each unit and answer each question individually for each inventory unit):

Inventory Source: See above.

Unit#/Name	Size (historic acres)	Natural Condition? Y/N	Outstanding Solitude? Y/N	Outstanding Primitive & Unconfined Recreation? Y/N	Supplemental Values? Y/N
*					
TOTAL					

* See **“NOTE”**, above, under **“1.”**.

H-6300-1-WILDERNESS INVENTORY MAINTENANCE IN BLM OREGON/WASHINGTON

APPENDIX B – INVENTORY AREA EVALUATION

Evaluation of Current Conditions:

- 1) Document and review the existing BLM wilderness inventory findings on file, if available, regarding the presence or absence of individual wilderness characteristics, using Form 1, below.
- 2) Consider relevant information regarding current conditions available in the office to identify and describe any changes to the existing information (use interdisciplinary (ID) team knowledge, aerial photographs, field observations, maps, etc.), and document your findings on Form 2, below.

When Citizen Information has been submitted regarding wilderness characteristics, document the submitted materials including: date of Submission; Name of District(s) and Field Office(s) Affected; Type of material Submitted (e.g. narrative, map, photo). Evaluate any submitted citizen information regarding the validity of proposed boundaries of the unit(s), the existence of roads and other boundary features, the size of the unit(s), and the presence or absence of wilderness characteristics based on relevant information available in the office (prior BLM inventories, ID team knowledge, aerial photographs, field observations, maps, etc.)

Conduct field reviews as necessary to verify information and to ascertain current conditions. Reach conclusions on current conditions including boundaries, size of areas and presence or absence of wilderness characteristics. Fully explain the basis for each conclusion on form 2, including any critical differences between BLM and citizen information.

Document your findings regarding current conditions for each inventoried area. Describe how the present conditions are similar to, or have changed from, the conditions documented in the original wilderness inventory. Document your findings on Form 2 for each inventory area. Cite to or attach data considered, including photographs, maps, GIS layers, field trip notes, project files, *etc.*

FORM 2 -- DOCUMENTATION OF CURRENT WILDERNESS INVENTORY CONDITIONS

Unit Number/Name – OR-036-051 -- McDermitt Creek

Description of Current Conditions: [Include land ownership, location, topography, vegetation features and summary of major human uses/activities.]

1. Is the unit of sufficient size?

Yes X No

Description: Refer to this inventory unit’s associated Map 1 for its location. The 5,744 acre unit was part of the original BLM unit OR-03-12-03 of the latter 1970’s. The unit boundary consists of BLM roads on its north, west and partially south sides, county road 581, and private property on its south side. BLM and county roads merge at the east boundary. These roads receive mechanical maintenance as needed to keep them passable on a relatively regular and seasonally continuous basis.

2. Is the unit in a natural condition?

Yes No X N/A

Description: Topography is flat to rolling terrain in the east half while the west half contains the shallow drainages McDermitt and Dry Creeks which are less than a mile apart. They merge where the finger of private land separates the rest of the unit. Elevation ranges from 5,108 to 6,062 feet above sea level. Vegetation consists primarily of sagebrush and both native and non-native grass species.

Refer to this inventory unit’s associated Map 1 and Map 2 for the location of human imprints. They include 15 miles of 19 motorized primitive trails, 0.5 mile of an abandoned route, 6.8 miles of rangeland fence, 0.3 miles of buried water pipeline with a trough, six earthen reservoirs, and one fenced enclosure. There remains no visual evidence of a 1967 aerial seeding of non-native grasses. Due to the amount of and close spatial separation between motorized primitive trails (MPTs, several which bisect approximately half of the unit), the location of the finger of private property associated with the center of the unit, and generally narrow configuration of the unit, the works of man are substantially noticeable. Overall, to the average visitor the area appears to be primarily affected by the influences of man.

3. Does the unit have outstanding opportunities for solitude?Yes _____ No X N/A _____

Description: Unit OR-036-051 is approximately 5 miles in length and varies from 1 to 2.5 miles in width. The unit's configuration relative to its size, and in combination with the influence of the Turner Ranch (within the cherry-stem private property near the center of unit) and the associated MPTs radiating from the private property, do not provide the visitor the opportunity to avoid the sights and sounds of other visitors. There is insufficient height or density of vegetation to screen visitors from one another. While some topographic screening is possible in the northwestern portion of the unit, overall the unit does not have outstanding opportunities for solitude due to the combination of insufficient types and extent of natural features for screening and the affects of the multiple MPTs.

4. Does the unit have outstanding opportunities for primitive and unconfined recreation?Yes _____ No X N/A _____

Description: There are opportunities for hiking, horseback riding, photography, general sightseeing, and hunting common game species (primarily deer and chukar). Individually and collectively, these opportunities are not outstanding. There are no unique sights or attractions within the unit to draw visitors. The narrow configuration of the unit relative to its size in combination with a relatively high number of primitive motorized trails crossing the unit ensures the visitor will encounter vehicular routes within a short distance (1 to 2 miles) which limit the opportunities for primitive recreation. In recognition of afore stated features and characteristics of this inventory unit, primitive and unconfined recreation activity opportunities are less than outstanding.

5. Does the unit have supplemental values?Yes X No _____ N/A _____

Description: There are 5 documented leks of sage grouse, which is a BLM special status animal species.

Summary of Findings and Conclusion

Unit Name and Number: OR-036-051 -- McDermitt Creek

Summary Results of Analysis:


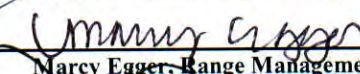

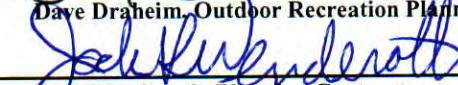
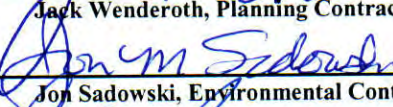
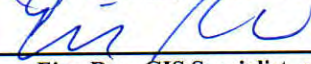
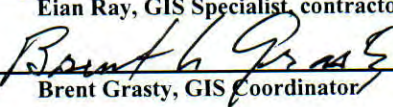
- 1. Does the area meet any of the size requirements? Yes No
- 2. Does the area appear to be natural? Yes No
- 3. Does the area offer outstanding opportunities for solitude or a primitive and unconfined type of recreation? Yes No NA
- 4. Does the area have supplemental values? Yes No NA

Conclusion -- check one:

- The area, or a portion of the area, has wilderness character.
- The area does not have wilderness character.

Prepared by: 
Robert Alward, Wilderness Planner contractor

Team Members:

<u></u>	<u>4/29/10</u>
Richard White, Range Management Specialist	Date
<u></u>	<u>5/17/10</u>
Marcy Egger, Range Management Specialist	Date
<u></u>	<u>2/10/10</u>
Dave Draheim, Outdoor Recreation Planner	Date
<u></u>	<u>5/17/10</u>
Jack Wenderoth, Planning Contractor	Date
<u></u>	<u>4-28-2010</u>
Jon Sadowski, Environmental Contractor	Date
<u></u>	<u>5-14-10</u>
Eian Ray, GIS Specialist, contractor	Date
<u></u>	<u>5/18/10</u>
Brent Grasty, GIS Coordinator	Date

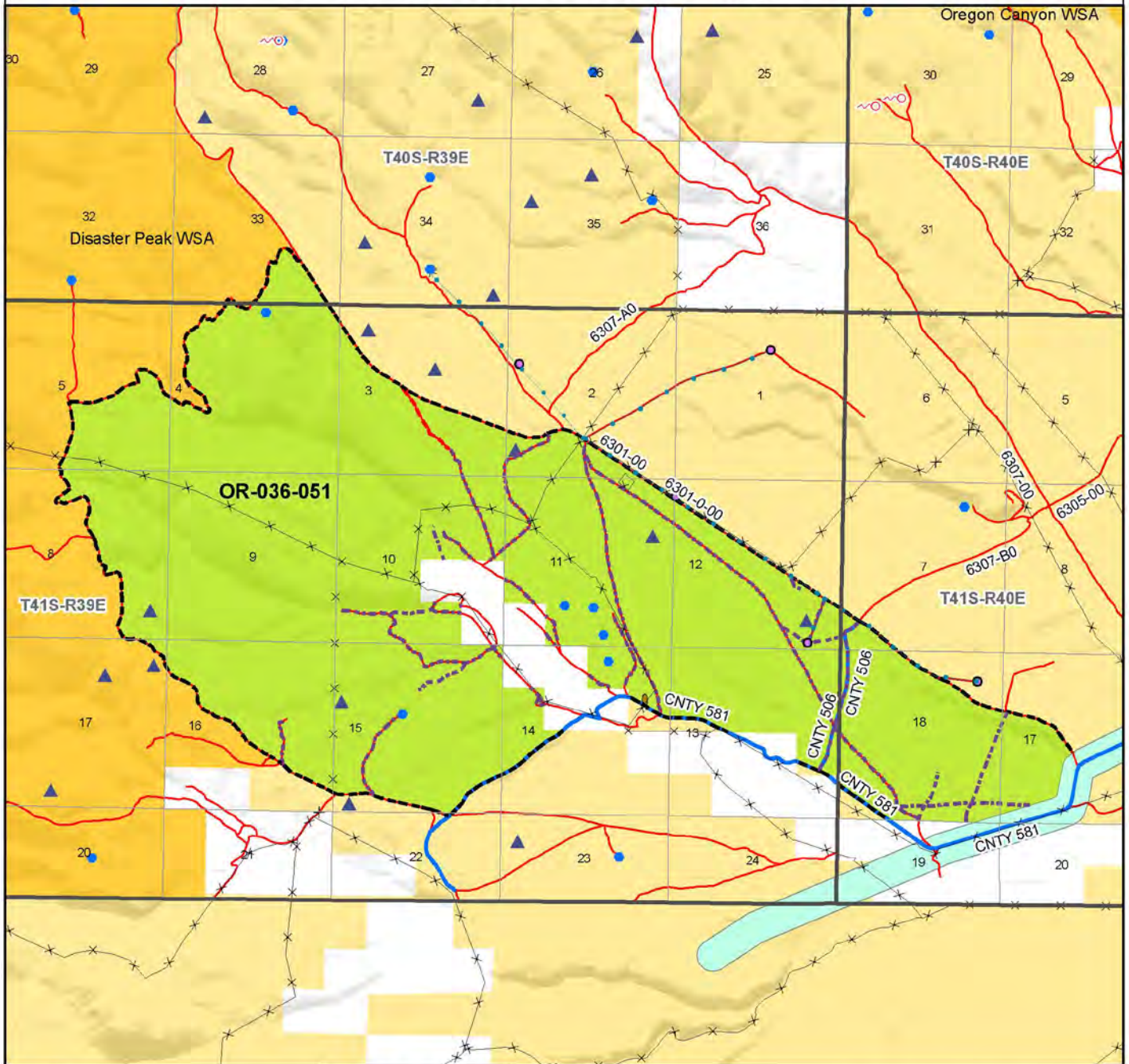
Approved by:

 7/19/2010
Carolyn Freeborn, Jordan Resource Area Field Manager Date

This form documents information that constitutes an inventory finding on wilderness characteristics. It does not represent a formal land use allocation or a final agency decision subject to administrative remedies under either 43 CFR parts 4 or 1610.5-2.

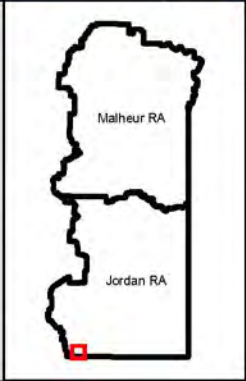
Wilderness Characteristics - Overview

McDermitt Creek - OR-036-051 - Map 1 of 2



Legend

<ul style="list-style-type: none"> Developed Spring Wildlife Guzzler Earthen Reservoir Pipeline Trough Fence Storage Tank Surface Mining Disturbance Sage Grouse Lek Social Status Plant BLM Wild Char Inventory Unit Wilderness Study Area Mineral Material Site Road/Utility Right-of-Way Major Water Body 	<p>Route Types - BLM Determination</p> <ul style="list-style-type: none"> Boundary Road Motorized Primitive Trail (MPT) Discontinued Use <p>Routes - Outside Wild Char Unit</p> <ul style="list-style-type: none"> County Major Highway BLM Numbered & Other Routes <p>Land Ownership</p> <ul style="list-style-type: none"> Bureau of Land Management State Private Other/Federal Land
--	--

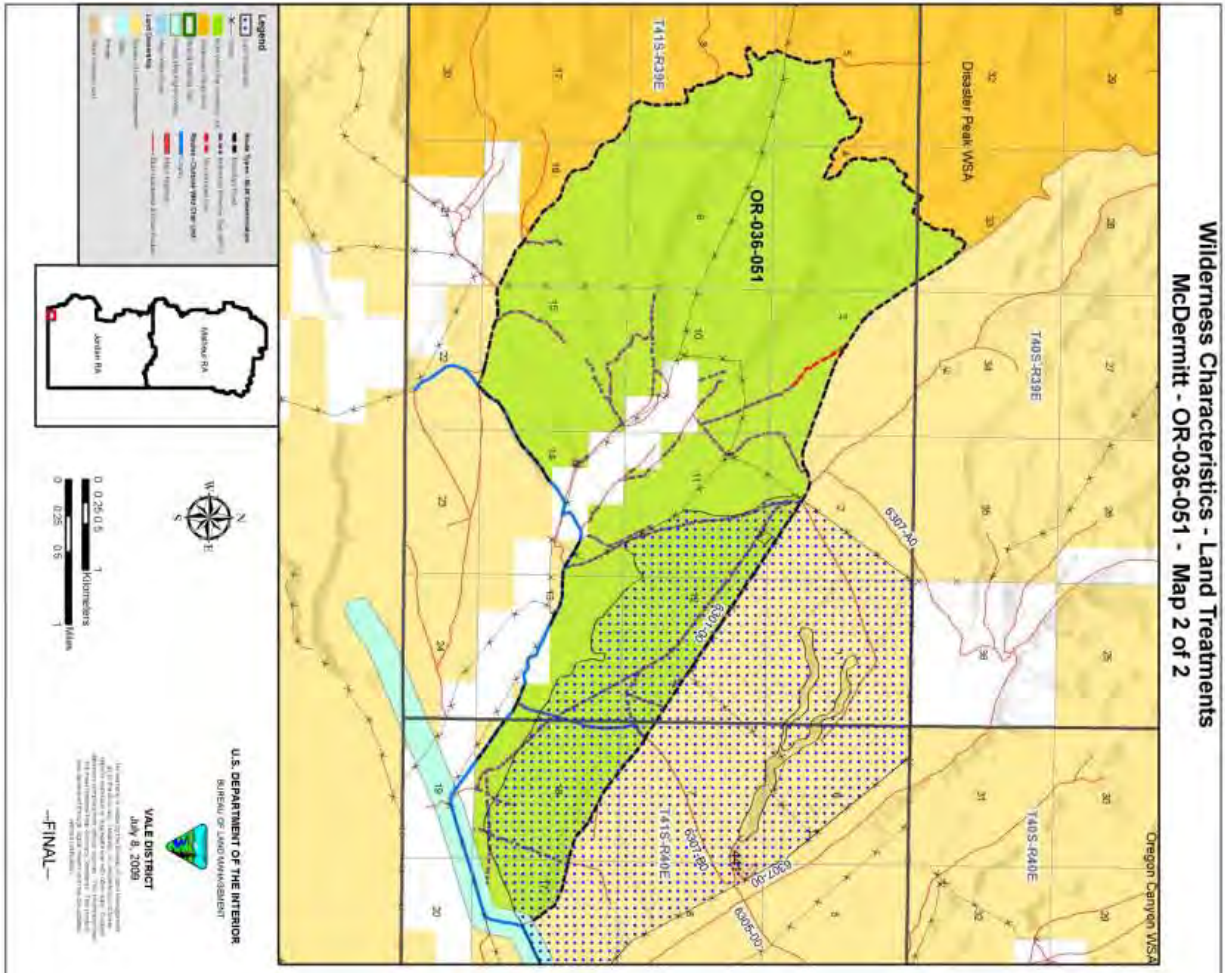


U.S. DEPARTMENT OF THE INTERIOR
BUREAU OF LAND MANAGEMENT

VALE DISTRICT
July 8, 2009

No warranty is made by the Bureau of Land Management as to the accuracy, reliability, or completeness of these data for individual or aggregate use with other data. Original data were compiled from various sources. This information may not meet National Map Accuracy Standards. This product was developed through digital means and may be updated without notification.

--FINAL--



Wilderness Characteristics - Land Treatments
McDermitt - OR-036-051 - Map 2 of 2

Wilderness Characteristics - Land Treatments
McDermitt - OR-036-051 - Map 2 of 2

OBJECTID*	NAME	TREATMENT TYPE	SEED GROUP	DATE
441	DISASTER PEAK SDG	Aerial Seeding	Non-native Grasses	1967

Note: The Land Treatments represented by navy blue dots on the map to the left are labeled with treatments' ObjectIDs listed in the first field of the Land Treatments table shown above. Multiple treatments may have been applied to the same area. For example, one treatment area may have been plowed and drill seeded - a record is shown in the table for each type of treatment.

U.S. DEPARTMENT OF THE INTERIOR
BUREAU OF LAND MANAGEMENT
VALE DISTRICT
July 8, 2009
-FINAL-