

Wilderness Inventory Unit Index of Documents  
**Mahogany Mountain OR-034-032, 10 total pages**

Page 1: Index Cover Sheet

[Page 2: Form 1 – Documentation of BLM Wilderness Inventory: Findings on Record](#)

[Page 5: Form 2 – Documentation of Current Wilderness Inventory Conditions](#)

[Page 8: Form 2 – Summary of Findings and Conclusion](#)

[Page 9: Wilderness Characteristics Overview – Mahogany Mountain OR-034-032 Map 1 of 2](#)

[Page 10: Wilderness Characteristics -Land Treatments- Mahogany Mountain OR-034-032 Map 2 of 2](#)

**Prepared by:**  
**U.S. Department of the Interior**  
**Bureau of Land Management**  
**Vale District Office**  
**100 Oregon Street**  
**Vale, Oregon 97918**



## **H-6300-1-WILDERNESS INVENTORY MAINTENANCE IN BLM OREGON/WASHINGTON**

### **APPENDIX B – INVENTORY AREA EVALUATION**

#### **Evaluation of Current Conditions:**

- 1) Document and review the existing BLM wilderness inventory findings on file, if available, regarding the presence or absence of individual wilderness characteristics, using Form 1, below.
- 2) Consider relevant information regarding current conditions available in the office to identify and describe any changes to the existing information (use interdisciplinary (ID) team knowledge, aerial photographs, field observations, maps, etc.), and document your findings on Form 2, below.

When Citizen Information has been submitted regarding wilderness characteristics, document the submitted materials including: date of Submission; Name of District(s) and Field Office(s) Affected; Type of material Submitted (e.g. narrative, map, photo). Evaluate any submitted citizen information regarding the validity of proposed boundaries of the unit(s), the existence of roads and other boundary features, the size of the unit(s), and the presence or absence of wilderness characteristics based on relevant information available in the office (prior BLM inventories, ID team knowledge, aerial photographs, field observations, maps, etc.)

Conduct field reviews as necessary to verify information and to ascertain current conditions. Reach conclusions on current conditions including boundaries, size of areas and presence or absence of wilderness characteristics. Fully explain the basis for each conclusion on form 2, including any critical differences between BLM and citizen information.

Document your findings regarding current conditions for each inventoried area. Describe how the present conditions are similar to, or have changed from, the conditions documented in the original wilderness inventory. Document your findings on Form 2 for each inventory area. Cite to or attach data considered, including photographs, maps, GIS layers, field trip notes, project files, *etc.*

Year: 2009 Unit Number/Name: OR-034-032 – Mahogany Mountain

**FORM 1 -- DOCUMENTATION OF BLM WILDERNESS INVENTORY  
FINDINGS ON RECORD**

**1. Is there existing BLM wilderness inventory information on all or part of this area?**

Yes X No \_\_\_\_\_ (If yes, and if more than one unit is within the area, list the names of those units.):

**A.) Inventory Source(s) -- (X) Denotes all applicable BLM Inventory files, printed maps, or published BLM Decision documents with information pertaining to this unit.**

**Wilderness Inventories**

- (X) 1978-1980 – BLM Wilderness Inventory Unit 3-79A Mahogany Mountain of OR-03-05-27 (unpublished BLM document in case files)
- ( ) April 1979 – *Wilderness -- Proposed Initial Inventory – Roadless Areas and Islands Which Clearly Do Not have Wilderness Characteristics, Oregon and Washington*

**Wilderness Decision Documents**

- (X) August 1979 – *Wilderness Review – Initial Inventory, Final Decision on Public Lands Obviously Lacking Wilderness Characteristics and Announcement of Public Lands to be Intensively Inventoried for Wilderness Characteristics, Oregon and Washington* (green document)
- ( ) October 1979 – *Wilderness Review – Intensive Inventory - Oregon, Proposed Decision on the Intensive Wilderness Inventory of Selected Areas* (grey document)
- (X) March 1980 – *Wilderness Review – Intensive Inventory; Final Decisions on 30 Selected Units in Southeast Oregon and Proposed Decisions on Other Intensively Inventoried Units in Oregon and Washington* (orange document)
- (X) November 1980 - *Wilderness Inventory – Oregon and Washington, Final Intensive Inventory Decisions* (brown document)
- ( ) November 1981 *Stateline Intensive Wilderness Inventory Final Decision, Oregon, Idaho, Nevada, Utah* (tan document)

**B.) Inventory Unit Name(s)/Number(s)**

BLM 3-79A Mahogany Mountain of OR-03-05-27

**C.) Map Name(s)/Number(s)**

- (X) Final Decision – Initial Wilderness Inventory Map, August 1979, Oregon
- ( ) Proposed Decision -- Intensive Wilderness Inventory of Selected Areas Map, October 1979, Oregon
- (X) Intensive Wilderness Inventory Map, March 1980, Oregon
- (X) Intensive Wilderness Inventory --Final Decisions Map, November 1980, Oregon
- ( ) November, 1981 *Stateline Intensive Wilderness Inventory Final Decision, Oregon, Idaho, Nevada, Utah* (tan document)

**D.) BLM District(s)/Field Office(s)**

Vale District/Malheur Resource Area

**2. BLM Inventory Findings on Record**

(Existing inventory information regarding wilderness characteristics (if more than one BLM inventory unit is associated with the area, list each unit and answer each question individually for each inventory unit):

**Inventory Source:** See above.

<b>Unit#/ Name</b>	<b>Size (historic acres)</b>	<b>Natural Condition? Y/N</b>	<b>Outstanding Solitude? Y/N</b>	<b>Outstanding Primitive &amp; Unconfined Recreation? Y/N</b>	<b>Supplemental Values? Y/N</b>
3-79A Mahogany Mountain of OR-03-05-27	10,500	Y (partially)	N	N	Y
<b>TOTAL</b>	10,500				

## **H-6300-1-WILDERNESS INVENTORY MAINTENANCE IN BLM OREGON/WASHINGTON**

### **APPENDIX B – INVENTORY AREA EVALUATION**

#### **Evaluation of Current Conditions:**

- 1) Document and review the existing BLM wilderness inventory findings on file, if available, regarding the presence or absence of individual wilderness characteristics, using Form 1, below.
- 2) Consider relevant information regarding current conditions available in the office to identify and describe any changes to the existing information (use interdisciplinary (ID) team knowledge, aerial photographs, field observations, maps, etc.), and document your findings on Form 2, below.

When Citizen Information has been submitted regarding wilderness characteristics, document the submitted materials including: date of Submission; Name of District(s) and Field Office(s) Affected; Type of material Submitted (e.g. narrative, map, photo). Evaluate any submitted citizen information regarding the validity of proposed boundaries of the unit(s), the existence of roads and other boundary features, the size of the unit(s), and the presence or absence of wilderness characteristics based on relevant information available in the office (prior BLM inventories, ID team knowledge, aerial photographs, field observations, maps, etc.)

Conduct field reviews as necessary to verify information and to ascertain current conditions. Reach conclusions on current conditions including boundaries, size of areas and presence or absence of wilderness characteristics. Fully explain the basis for each conclusion on form 2, including any critical differences between BLM and citizen information.

Document your findings regarding current conditions for each inventoried area. Describe how the present conditions are similar to, or have changed from, the conditions documented in the original wilderness inventory. Document your findings on Form 2 for each inventory area. Cite to or attach data considered, including photographs, maps, GIS layers, field trip notes, project files, *etc.*

## **FORM 2 -- DOCUMENTATION OF CURRENT WILDERNESS INVENTORY CONDITIONS**

**Unit Number/Name:** OR-034-032 – Mahogany Mountain

**Description of Current Conditions:** [Include land ownership, location, topography, vegetation features and summary of major human uses/activities.]

### **1. Is the unit of sufficient size?**

Yes   X                        No           

**Description:** Refer to this inventory unit's associated Map 1 for location. The unit has 11,942 acres of public land. Its boundaries are the same as for the late 1970's unit 3-79. The higher acreage figure for OR-034-032 is apparently due to improved technology to more accurately determine acreage. Boundaries include the County 3130, 3801, 3802, 3623, and 3209 roads, and private lands on three sides of the unit. A 1.25 mile cherry stem road is also a feature of the unit's boundary. The roads receive mechanical maintenance as needed to provide for relatively regular and seasonally continuous use.

### **2. Is the unit in a natural condition?**

Yes   X                        No                                 N/A           

**Description:** The far western portion includes some of the eastern ridge extension of Mahogany Mountain. A portion of South Fork Carter Creek is centrally oriented, including a short, steep canyon segment, while upper elevations of Spring Creek and Road Canyon Creek drainages rest closer to the unit's boundaries. A ridge system with a series of tabled hill tops in the unit's south central area separates upper reaches of SF Carter Creek and Spring Creek drainages within the unit. While certain locations are steep sloped, others are more so moderate and graduate to rolling country. Elevations range from about 4,145 to 5,728 feet. The unit is dominated by sagebrush and both native and non-native grasses. Mountain mahogany, aspen, willows and some juniper are associated with limited locations of the higher terrain within the eastern third of the unit.

Refer to this unit's associated Map 1 and Map 2 for human imprints. They include 18.3 miles of rangeland fences, 15.4 miles of 9 motorize primitive trails (MPTs), one earthen reservoir, 5 developed springs, and 3 pipelines totaling 1.9 miles and 5 troughs. (Note: a pipeline associated with the unit's east boundary road are considered an element of the unit's boundary, thus outside of the unit.) Since the original unit's establishment, surface scaring from a large 1971 plow/drill seeding has become obscured and is now visually non-evident to the average visitor. Due largely to the extent of the terrain's screening abilities within certain portions of the unit, the remaining types, extent and distribution of visually evident developments results in the unit being affected primarily by the forces of nature with the imprints of mankind being substantially unnoticeable to the average visitor.

**3. Does the unit have outstanding opportunities for solitude?**Yes \_\_\_\_\_ No   X   N/A \_\_\_\_\_

**Description:** Certain, site-specific small pockets of denser larger woody vegetation, sometimes in combination with more rugged topographic settings, provide localized areas for experiencing a sense of solitude, but none of these locations – individually or in combination – are large enough to offer outstanding opportunities for solitude. The ragged, broken configuration of the unit disrupts continuous landscapes, thus precluding outstanding opportunities to sense being alone on public lands. This is substantially due to areas of public lands of shorten length and/or width dimensions because of three extended parcels of private land associated with the unit’s south and north boundaries. Even with the historic seeding area now appearing natural (thus -- unlike the late 1970’s - - presently included as part of OR-034-032 for determination of this wilderness characteristic criteria), the predominately gentle terrain associated with the seeded area does not provide outstanding opportunities for solitude – alone or in combination with the rest of the unit’s area and its respective topography and configuration. The unit does not provide outstanding opportunities for solitude.

**4. Does the unit have outstanding opportunities for primitive and unconfined recreation?**Yes \_\_\_\_\_ No   X   N/A \_\_\_\_\_

**Description:** Dispersed recreational activities within OR-034-032 include hunting of common game species (primarily deer and chukar, some antelope), and day hiking. Additionally, the more scenic narrow corridor of the steeper canyon segment of SF Carter Creek is an attractant for photography when hiking the area. BLM’s mid-1990’s documented wild and scenic river eligibility evaluation of a segment of SF Carter Creek (and which is located within this inventory unit) concluded that the creek segment did not qualify as a potential national wild and scenic river candidate. The evaluation concluded that the creek segment does not possess outstandingly remarkable values. The creek segment in combination with the rest of OR-034-032 does not possess any unique or special features which would more so draw the recreating public to the unit. The unit does not possess outstanding opportunities for primitive and unconfined recreation.

**5. Does the unit have supplemental values?**Yes   X   No \_\_\_\_\_ N/A \_\_\_\_\_

**Description:** There are two documented sites of Owyhee Clover (*Trifolium owyheense*), a BLM special status plant species, and one lek site of sage grouse, a BLM special status animal species.

**Summary of Findings and Conclusion**

**Unit Name and Number:** OR-034 -032—Mahogany Mountain

**Summary Results of Analysis:**

- 1. Does the area meet any of the size requirements?  Yes  No
- 2. Does the area appear to be natural?  Yes  No
- 3. Does the area offer outstanding opportunities for solitude or a primitive and unconfined type of recreation?  Yes  No  NA
- 4. Does the area have supplemental values?  Yes  No  NA

**Conclusion -- check one:**

- The area, or a portion of the area, has wilderness character.
- The area does not have wilderness character.

**Prepared by:** Robert Alward  
Robert Alward, Wilderness Planner contractor

**Team Members:**

<u>Mitch Thomas</u>	<u>2/14/10</u>
Mitch Thomas, Rangeland Management Specialist	Date
<u>Dave Draheim</u>	<u>2/10/10</u>
Dave Draheim, Outdoor Recreation Planner	Date
<u>Michelle Caviness</u>	<u>2/25/10</u>
Michelle Caviness, Wildlife Biologist	Date
<u>Gillian Wigglesworth</u>	<u>2/5/10</u>
Gillian Wigglesworth, Botanist	Date
<u>Jonathan Westfall</u>	<u>02/08/2010</u>
Jon Westfall, Geologist	Date
<u>Ejan Ray</u>	<u>02/09/10</u>
Ejan Ray, GIS Specialist, contractor	Date
<u>Brent Grasty</u>	<u>2/9/10</u>
Brent Grasty, GIS Coordinator	Date

**Approved by:**

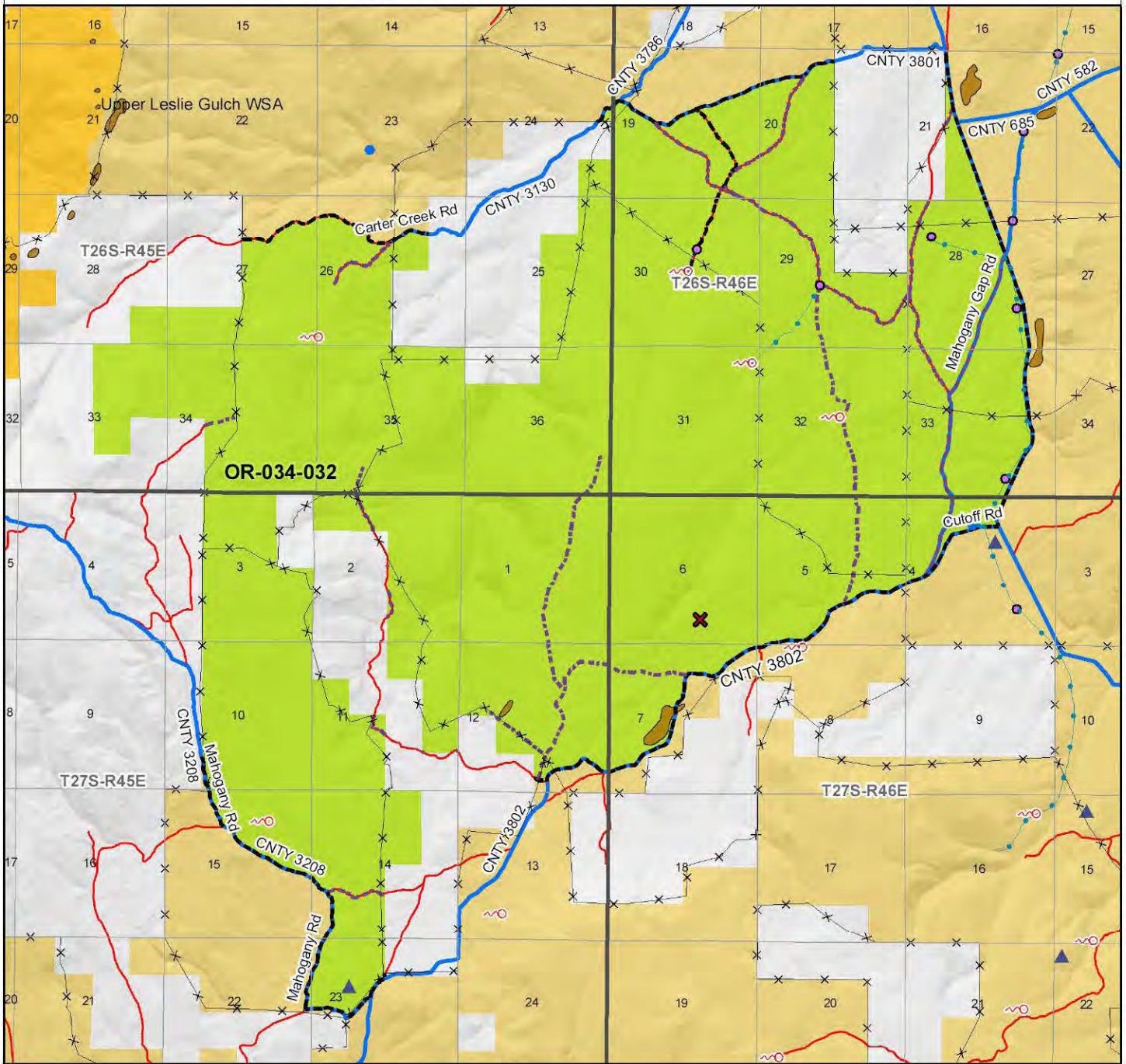
Pat Ryan 3/30/2010  
Pat Ryan, Malheur Resource Area Field Manager Date

*This form documents information that constitutes an inventory finding on wilderness characteristics. It does not represent a formal land use allocation or a final agency decision subject to administrative remedies under either 43 CFR parts 4 or 1610.5-2.*



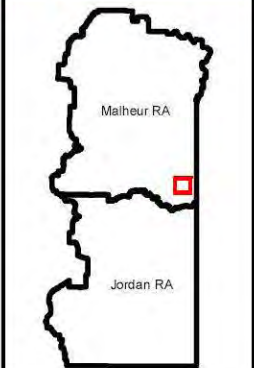
# Wilderness Characteristics - Overview

## Mahogany Mountain - OR-034-032 - Map 1 of 2



### Legend

- |   |  |
|---|--|
| <ul style="list-style-type: none"> <li> Developed Spring</li> <li> Wildlife Guzzler</li> <li> Earthen Reservoir</li> <li> Pipeline</li> <li> Trough</li> <li> Fence</li> <li> Storage Tank</li> <li> Surface Mining Disturbance</li> <li> Sage Grouse Lek</li> <li> Special Status Plant</li> <li> BLM Wild Char Inventory Unit</li> <li> Wilderness Study Area</li> <li> Mineral Material Site</li> <li> Road/Utility Right-of-Way</li> <li> Major Water Body</li> </ul> | <ul style="list-style-type: none"> <li><b>Route Types - BLM Determination</b></li> <li> Boundary Road</li> <li> Motorized Primitive Trail (MPT)</li> <li> Discontinued Use</li> <li><b>Routes - Outside Wild Char Unit</b></li> <li> County</li> <li> Major Highway</li> <li> BLM Numbered &amp; Other Routes</li> <li><b>Land Ownership</b></li> <li> Bureau of Land Management</li> <li> State</li> <li> Private</li> <li> Other Federal Land</li> </ul> |
|---|--|



**U.S. DEPARTMENT OF THE INTERIOR**  
BUREAU OF LAND MANAGEMENT

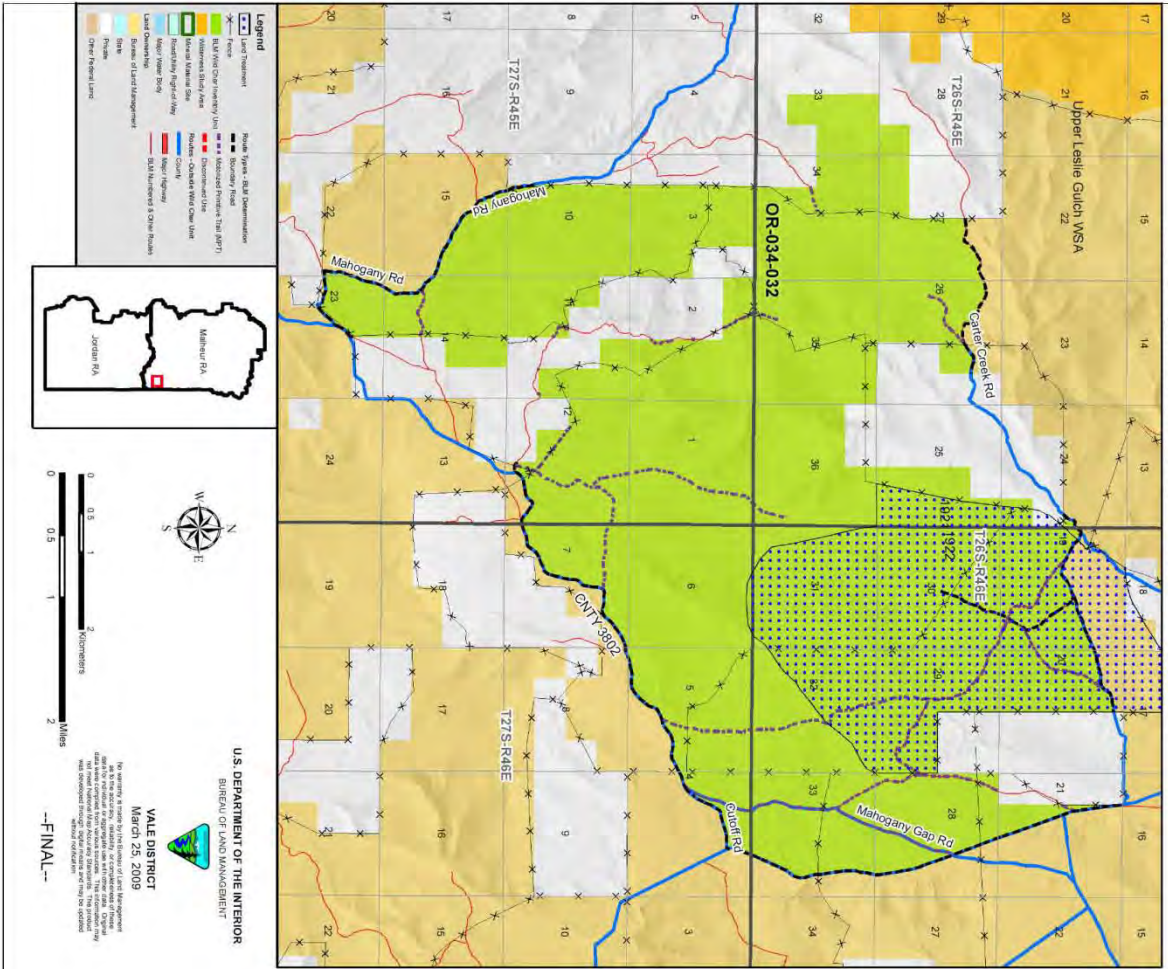


**VALE DISTRICT**  
May 12, 2009

No warranty is made by the Bureau of Land Management as to the accuracy, reliability, or completeness of these data for individual or aggregate use with other data. Original data were compiled from various sources. This information may not meet National Map Accuracy Standards. This product was developed through digital means and may be updated without notification.

--FINAL--

**Wilderness Characteristics - Land Treatments**  
**Mahogany Mountain - OR-034-032 - Map 2 of 2**



**Wilderness Characteristics - Land Treatments**  
**Mahogany Mountain - OR-034-032 - Map 2 of 2**

OBJECTID*	NAME	TREATMENT TYPE	SEED GROUP	DATE
1921	CARTER CREEK SEEDING	Plow/Disc	Not Applicable	1971
1922	CARTER CREEK SEEDING	Drill Seeding	Unknown	1971

Note: The Land Treatments represented by navy blue dots on the map to the left are labeled with the treatments ObjectIDs listed in the first field of the Land Treatments table shown above. Multiple types of treatments may have been applied to the same area. For example, one treatment area may have been plowed and drill seeded - a record is shown in the table for each type of treatment.

U.S. DEPARTMENT OF THE INTERIOR  
 Bureau of Land Management  
**VALE DISTRICT**  
 March 25, 2009  
 -FINAL-