

Wilderness Inventory Unit Index of Documents
Long Gulch OR-034-080, 9 total pages

Page 1: Index Cover Sheet

[Page 2: Form 1 – Documentation of BLM Wilderness Inventory: Findings on Record](#)

[Page 5: Form 2 – Documentation of Current Wilderness Inventory Conditions](#)

[Page 8: Form 2 – Summary of Findings and Conclusion](#)

[Page 9: Wilderness Characteristics Overview – Long Gulch OR-034-080 Map 1](#)

Prepared by:
U.S. Department of the Interior
Bureau of Land Management
Vale District Office
100 Oregon Street
Vale, Oregon 97918



H-6300-1-WILDERNESS INVENTORY MAINTENANCE IN BLM OREGON/WASHINGTON

APPENDIX B – INVENTORY AREA EVALUATION

Evaluation of Current Conditions:

- 1) Document and review the existing BLM wilderness inventory findings on file, if available, regarding the presence or absence of individual wilderness characteristics, using Form 1, below.

- 2) Consider relevant information regarding current conditions available in the office to identify and describe any changes to the existing information (use interdisciplinary (ID) team knowledge, aerial photographs, field observations, maps, etc.), and document your findings on Form 2, below.

When Citizen Information has been submitted regarding wilderness characteristics, document the submitted materials including: date of Submission; Name of District(s) and Field Office(s) Affected; Type of material Submitted (e.g. narrative, map, photo). Evaluate any submitted citizen information regarding the validity of proposed boundaries of the unit(s), the existence of roads and other boundary features, the size of the unit(s), and the presence or absence of wilderness characteristics based on relevant information available in the office (prior BLM inventories, ID team knowledge, aerial photographs, field observations, maps, etc.)

Conduct field reviews as necessary to verify information and to ascertain current conditions. Reach conclusions on current conditions including boundaries, size of areas and presence or absence of wilderness characteristics. Fully explain the basis for each conclusion on form 2, including any critical differences between BLM and citizen information.

Document your findings regarding current conditions for each inventoried area. Describe how the present conditions are similar to, or have changed from, the conditions documented in the original wilderness inventory. Document your findings on Form 2 for each inventory area. Cite to or attach data considered, including photographs, maps, GIS layers, field trip notes, project files, *etc.*

Year: 2009 **Unit Number/Name:** OR-034-080 -- Long Gulch

**FORM 1 -- DOCUMENTATION OF BLM WILDERNESS INVENTORY
FINDINGS ON RECORD**

1. Is there existing BLM wilderness inventory information on all or part of this area?

Yes No (If yes, and if more than one unit is within the area, list the names of those units.):

A.) Inventory Source(s) -- (X) Denotes all applicable BLM Inventory files, printed maps, or published BLM Decision documents with information pertaining to this unit.

Wilderness Inventories

- (X) 1978 – BLM Wilderness Inventory Units 3-23 of OR-03-02-42 Long Gulch (unpublished BLM documents stored in case files)
- (X) April 1979 – *Wilderness -- Proposed Initial Inventory – Roadless Areas and Islands Which Clearly Do Not have Wilderness Characteristics, Oregon and Washington*

Wilderness Decision Documents

- (X) August 1979 – *Wilderness Review – Initial Inventory, Final Decision on Public Lands Obviously Lacking Wilderness Characteristics and Announcement of Public Lands to be Intensively Inventoried for Wilderness Characteristics, Oregon and Washington* (green document)
- () October 1979 – *Wilderness Review – Intensive Inventory - Oregon, Proposed Decision on the Intensive Wilderness Inventory of Selected Areas* (grey document).
- () March 1980 – *Wilderness Review – Intensive Inventory; Final Decisions on 30 Selected Units in Southeast Oregon and Proposed Decisions on Other Intensively Inventoried Units in Oregon and Washington* (orange document)
- () November 1980 - *Wilderness Inventory – Oregon and Washington, Final Intensive Inventory Decisions* (brown document)
- () November 1981 *Stateline Intensive Wilderness Inventory Final Decision, Oregon, Idaho, Nevada, Utah* (tan document).

B.) Inventory Unit Name(s)/Number(s)

BLM 3-23 of OR-03-02-42 Long Gulch

C.) Map Name(s)/Number(s)

- Final Decision – Initial Wilderness Inventory Map, August 1979, Oregon
- Proposed Decision -- Intensive Wilderness Inventory of Selected Areas Map, October 1979, Oregon
- Intensive Wilderness Inventory Map, March 1980, Oregon
- Intensive Wilderness Inventory --Final Decisions Map, November 1980, Oregon.
- November, 1981 *Stateline Intensive Wilderness Inventory Final Decision, Oregon, Idaho, Nevada, Utah* (tan document).

D.) BLM District(s)/Field Office(s)

Vale District Office/ Malheur Field Office

2. BLM Inventory Findings on Record

(Existing inventory information regarding wilderness characteristics (if more than one BLM inventory unit is associated with the area, list each unit and answer each question individually for each inventory unit):

Inventory Source: See above.

Unit#/Name	Size (historic acres)	Natural Condition? Y/N	Outstanding Solitude? Y/N	Outstanding Primitive & Unconfined Recreation? Y/N	Supplemental Values? Y/N
3-23 of OR-03-02-42 Long Gulch	5,760	*	N	N	*
TOTAL	5,760				

*- These criteria were not specifically addressed in the inventory of this unit.

H-6300-1-WILDERNESS INVENTORY MAINTENANCE IN BLM OREGON/WASHINGTON

APPENDIX B – INVENTORY AREA EVALUATION

Evaluation of Current Conditions:

- 1) Document and review the existing BLM wilderness inventory findings on file, if available, regarding the presence or absence of individual wilderness characteristics, using Form 1, below.
- 2) Consider relevant information regarding current conditions available in the office to identify and describe any changes to the existing information (use interdisciplinary (ID) team knowledge, aerial photographs, field observations, maps, etc.), and document your findings on Form 2, below.

When Citizen Information has been submitted regarding wilderness characteristics, document the submitted materials including: date of Submission; Name of District(s) and Field Office(s) Affected; Type of material Submitted (e.g. narrative, map, photo). Evaluate any submitted citizen information regarding the validity of proposed boundaries of the unit(s), the existence of roads and other boundary features, the size of the unit(s), and the presence or absence of wilderness characteristics based on relevant information available in the office (prior BLM inventories, ID team knowledge, aerial photographs, field observations, maps, etc.)

Conduct field reviews as necessary to verify information and to ascertain current conditions. Reach conclusions on current conditions including boundaries, size of areas and presence or absence of wilderness characteristics. Fully explain the basis for each conclusion on form 2, including any critical differences between BLM and citizen information.

Document your findings regarding current conditions for each inventoried area. Describe how the present conditions are similar to, or have changed from, the conditions documented in the original wilderness inventory. Document your findings on Form 2 for each inventory area. Cite to or attach data considered, including photographs, maps, GIS layers, field trip notes, project files, *etc.*

**FORM 2 – DOCUMENTATION OF CURRENT WILDERNESS
INVENTORY CONDITIONS****Unit Number/Name:** OR-034-080 -- Long Gulch**Description of Current Conditions:** [Include land ownership, location, topography, vegetation features and summary of major human uses/activities.]**1. Is the unit of sufficient size?**Yes X No

Description: Refer to this inventory unit's associated Map 1 for location. It consists of the same area as the late 1970's 3-23 inventory unit. Its 5,254 acres of public land is bounded predominately by two north-south oriented roads – both on ridgelines either side of Dry Creek -- which merge together on both the north south ends of the unit. A private parcel at the unit's south end is also a boundary feature. The roads are maintained as needed to provide for regular and continuous use. The variance in acreage from the 3-23 unit is due to improved technology for determining area size since the late 1970's inventory was conducted.

2. Is the unit in a natural condition?Yes X No N/A

Description: The unit's terrain consists of rocky, rolling ridges with moderate to steep slopes of the Dry Creek watershed. Elevations range from 3,800 to 6,220 feet. The vegetation consists predominately of grasses, low-profiled sagebrush and western junipers. Older junipers are more so concentrated in or near the bottom of Dry Creek and some of its feeder ravines. There has been a recent encroachment of juniper from the historic areas of natural distribution of the species into various other locations within the inventory unit. There are isolate pockets of aspen associated with drainage bottoms.

Refer to this unit's associated Map 1 for human imprints within the unit. There is 6.1 miles of rangeland fences, 5 developed springs, and 0.8 mile of two motorized primitive trails. Given the type, distribution and location placement of developments, relative to the nature of the unit's topography and terrain, the unit appears to be affected primarily by the forces of nature with the imprint of humans being substantially unnoticeable to the average visitor.

3. Does the unit have outstanding opportunities for solitude?Yes _____ No N/A _____

Description: The unit is approximately 7.75 miles long and quite narrow. Its widest is about 1.5 miles with all but about one mile being less than that. The low-profiled sagebrush and scattered specimens of Western Juniper dominating the unit are not large enough or sufficiently spatially dense to provide for adequate vegetative screening to experience an outstanding opportunity for solitude. Along the Dry Creek channel a person would be able to experience a sense of solitude relative to the unit's topographic lay, but the nature of the drainage's slopes (degree of slope and terrain features) relative to the unit's narrow width does not support outstanding opportunities for solitude.

4. Does the unit have outstanding opportunities for primitive and unconfined recreation?Yes _____ No N/A _____

Description: The unit provides opportunities for hunting of common game species, (primarily chukar and deer) and associated hiking. These activities, individually or in combination – as well as there being no special or unique features, activities or attractions which would more so draw a visitor to the unit-- results in there being no outstanding opportunities for primitive and unconfined recreation.

5. Does the unit have supplemental values?Yes _____ No N/A _____**Description:**

Summary of Findings and Conclusion

Unit Name and Number: OR-034-080 — Long Gulch

Summary Results of Analysis:

- 1. Does the area meet any of the size requirements? Yes No
- 2. Does the area appear to be natural? Yes No
- 3. Does the area offer outstanding opportunities for solitude or a primitive and unconfined type of recreation? Yes No NA
- 4. Does the area have supplemental values? Yes No NA

Conclusion -- check one:

The area, or a portion of the area, has wilderness character.

The area does not have wilderness character.

Prepared by: 
Robert Alward, Wilderness Planner contractor

Team Members:

 6/11/09
Martin Espil, Rangeland Management Specialist Date

 6/11/2009
Steve Christensen, Rangeland Management Specialist Date


 6/11/09
Shaney Rockefeller, Soil Scientist Date

 6/11/09
Michelle Caviness, Wildlife Biologist Date

 6/11/09
Gillian Wigglesworth, Botanist Date

 6/12/09
David Draheim, Outdoor Recreation Planner Date

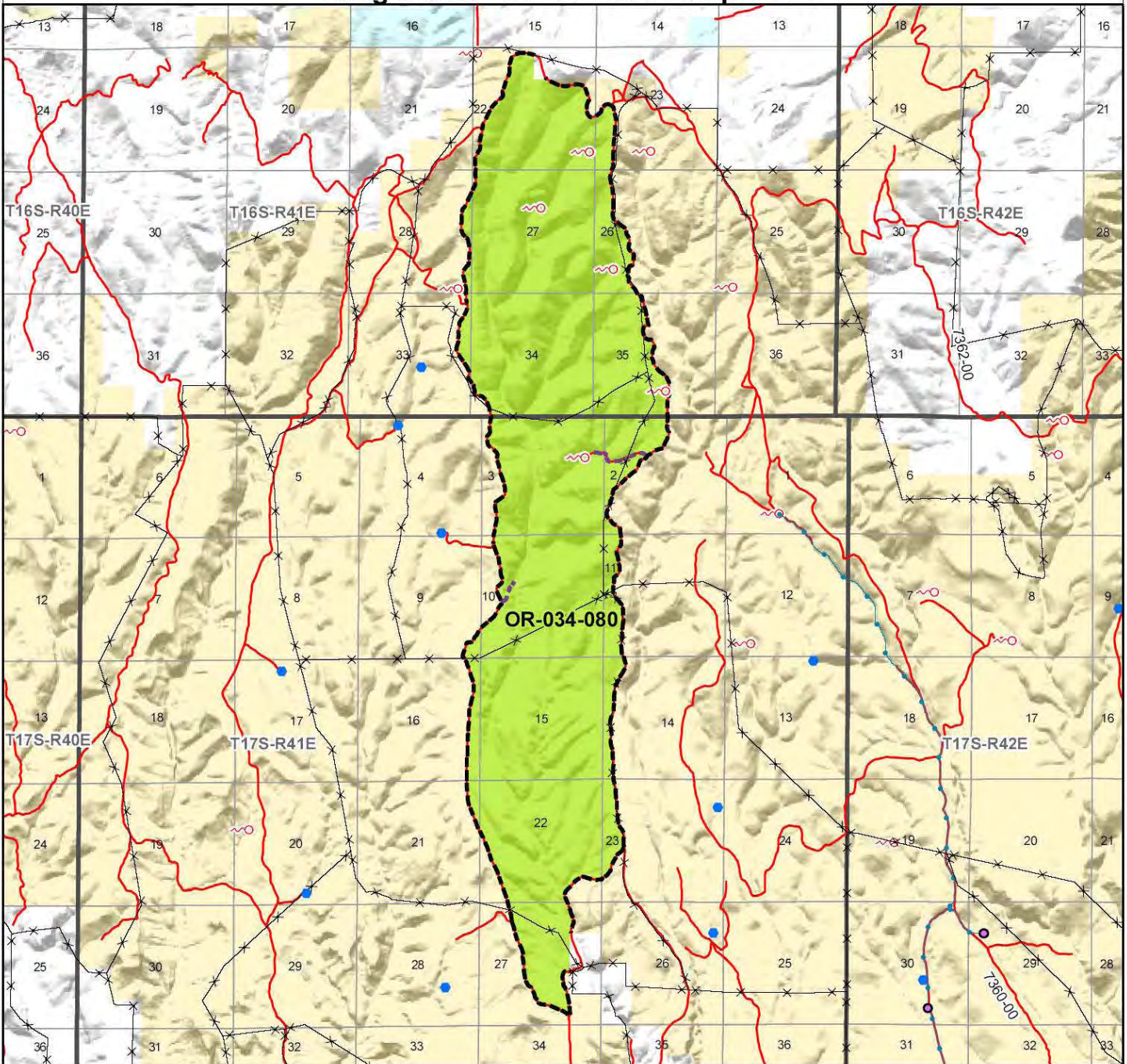
 6/12/09
Brent Grasty, GIS Coordinator Date

Approved by:  8/6/09
Pat Ryan, Malheur Resource Area Field Manager Date

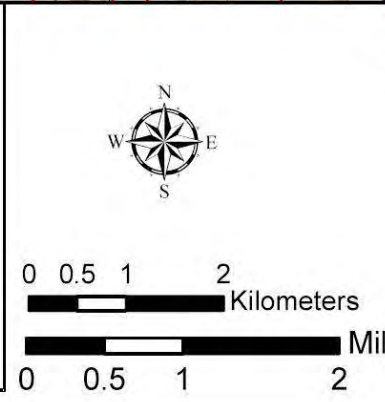
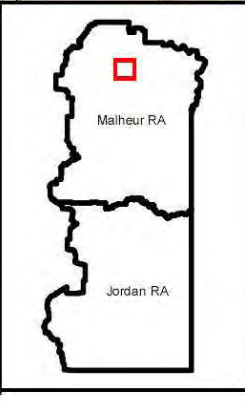
This form documents information that constitutes an inventory finding on wilderness characteristics. It does not represent a formal land use allocation or a final agency decision subject to administrative remedies under either 43 CFR parts 4 or 1610.5-2.

Wilderness Characteristics - Overview

Long Gulch - OR-034-080 - Map 1 of 1



- Legend**
- Developed Spring
 - Wildlife Guzzler
 - Earthen Reservoir
 - Pipeline
 - Troughs
 - Fence
 - Mineral Material Site
 - Road/Utility ROW
 - Wilderness Study Area
 - BLM Wild Char Inventory Unit
 - Route Types - BLM Determination**
 - Road
 - Interior Cherry Stem Road
 - Motorized Primitive Trail (MPT)
 - Discontinued Use
 - Routes - Outside Wild Char Unit**
 - County
 - Major Highway
 - BLM Numbered & Other Routes
 - Ownership**
 - Bureau of Land Management
 - State
 - Private



U.S. DEPARTMENT OF THE INTERIOR
BUREAU OF LAND MANAGEMENT

VALE DISTRICT
May 19, 2009

No warranty is made by the Bureau of Land Management as to the accuracy, reliability, or completeness of these data for individual or aggregate use with other data. Original data were compiled from various sources. This information may not meet National Map Accuracy Standards. This product was developed through digital means and may be updated without notification.

--FINAL--