

Wilderness Inventory Unit Index of Documents
Little Valley OR-034-045, 24 total pages

Page 1: Index Cover Sheet

[Page 2: Form 1 – Documentation of BLM Wilderness Inventory: Findings on Record](#)

[Page 5: Form 2 – Documentation of Current Wilderness Inventory Conditions](#)

[Page 10: Form 2 – Summary of Findings and Conclusion](#)

[Page 11: Wilderness Characteristics Overview – Little Valley OR-034-045 Map 1 of 2](#)

[Page 12: Wilderness Characteristics-Land Treatments-Little Valley OR-034-045 Map 2 of 2](#)

[Page 13: Wilderness Characteristics – BLM Photo Points – Little Valley Map & Log](#)

[Page 14: OR-034-045 Little Valley BLM Photos](#)

[Page 17: H-6300-1-Wilderness Inventory Maintenance in BLM Oregon/Washington
Appendix C – Road* Analysis: BLM 7321-0-0A0](#)

[Page 21: H-6300-1-Wilderness Inventory Maintenance in BLM Oregon/Washington
Appendix C – Road* Analysis: BLM 7322-0-100](#)

Prepared by:
U.S. Department of the Interior
Bureau of Land Management
Vale District Office
100 Oregon Street
Vale, Oregon 97918



H-6300-1-WILDERNESS INVENTORY MAINTENANCE IN BLM OREGON/WASHINGTON

APPENDIX B – INVENTORY AREA EVALUATION

Evaluation of Current Conditions:

1) Document and review the existing BLM wilderness inventory findings on file, if available, regarding the presence or absence of individual wilderness characteristics, using Form 1, below.

2) Consider relevant information regarding current conditions available in the office to identify and describe any changes to the existing information (use interdisciplinary (ID) team knowledge, aerial photographs, field observations, maps, etc.), and document your findings on Form 2, below.

When Citizen Information has been submitted regarding wilderness characteristics, document the submitted materials including: date of Submission; Name of District(s) and Field Office(s) Affected; Type of material Submitted (e.g. narrative, map, photo). Evaluate any submitted citizen information regarding the validity of proposed boundaries of the unit(s), the existence of roads and other boundary features, the size of the unit(s), and the presence or absence of wilderness characteristics based on relevant information available in the office (prior BLM inventories, ID team knowledge, aerial photographs, field observations, maps, etc.)

Conduct field reviews as necessary to verify information and to ascertain current conditions. Reach conclusions on current conditions including boundaries, size of areas and presence or absence of wilderness characteristics. Fully explain the basis for each conclusion on form 2, including any critical differences between BLM and citizen information.

Document your findings regarding current conditions for each inventoried area. Describe how the present conditions are similar to, or have changed from, the conditions documented in the original wilderness inventory. Document your findings on Form 2 for each inventory area. Cite to or attach data considered, including photographs, maps, GIS layers, field trip notes, project files, *etc.*

Year: 2009 **Unit Number/Name:** OR-034-045 – Little Valley

**FORM 1 -- DOCUMENTATION OF BLM WILDERNESS INVENTORY
FINDINGS ON RECORD**

1. Is there existing BLM wilderness inventory information on all or part of this area?

Yes No (If yes, and if more than one unit is within the area, list the names of those units.):

A.) Inventory Source(s) -- (X) Denotes all applicable BLM Inventory files, printed maps, or published BLM Decision documents with information pertaining to this unit.

Wilderness Inventories

- (X) 1978 – BLM Wilderness Inventory Unit OR-03-04-42; Little Valley, 3-65 (unpublished BLM documents in case files)
- (X) April 1979 – *Wilderness -- Proposed Initial Inventory – Roadless Areas and Islands Which Clearly Do Not have Wilderness Characteristics, Oregon and Washington*

Wilderness Decision Documents

- (X) August 1979 – *Wilderness Review – Initial Inventory, Final Decision on Public Lands Obviously Lacking Wilderness Characteristics and Announcement of Public Lands to be Intensively Inventoried for Wilderness Characteristics, Oregon and Washington* (green document)
- () October 1979 – *Wilderness Review – Intensive Inventory - Oregon, Proposed Decision on the Intensive Wilderness Inventory of Selected Areas* (grey document).
- () March 1980 – *Wilderness Review – Intensive Inventory; Final Decisions on 30 Selected Units in Southeast Oregon and Proposed Decisions on Other Intensively Inventoried Units in Oregon and Washington* (orange document)
- () November 1980 - *Wilderness Inventory – Oregon and Washington, Final Intensive Inventory Decisions* (brown document)
- () November 1981 *Stateline Intensive Wilderness Inventory Final Decision, Oregon, Idaho, Nevada, Utah* (tan document).

B.) Inventory Unit Name(s)/Number(s)

-BLM OR-03-04-42; Little Valley 3-65

C.) Map Name(s)/Number(s)

- Final Decision – Initial Wilderness Inventory Map, August 1979, Oregon
- Proposed Decision -- Intensive Wilderness Inventory of Selected Areas Map, October 1979, Oregon
- Intensive Wilderness Inventory Map, March 1980, Oregon
- Intensive Wilderness Inventory --Final Decisions Map, November 1980, Oregon.
- November, 1981 *Stateline Intensive Wilderness Inventory Final Decision, Oregon, Idaho, Nevada, Utah* (tan document).

D.) BLM District(s)/Field Office(s)

Vale District Office/ Malheur Field Office

2. BLM Inventory Findings on Record

(Existing inventory information regarding wilderness characteristics (if more than one BLM inventory unit is associated with the area, list each unit and answer each question individually for each inventory unit):

Inventory Source: See above.

Unit#/ Name	Size (historic acres)	Natural Condition? Y/N	Outstanding Solitude? Y/N	Outstanding Primitive & Unconfined Recreation? Y/N	Supplemental Values? Y/N
(3-65) OR-03-04-42 Little Valley	5,960	N	*	*	*
TOTAL	5,960				

*-- These criteria were not specifically addressed in the inventory of this unit.

H-6300-1-WILDERNESS INVENTORY MAINTENANCE IN BLM OREGON/WASHINGTON

APPENDIX B – INVENTORY AREA EVALUATION

Evaluation of Current Conditions:

- 1) Document and review the existing BLM wilderness inventory findings on file, if available, regarding the presence or absence of individual wilderness characteristics, using Form 1, below.
- 2) Consider relevant information regarding current conditions available in the office to identify and describe any changes to the existing information (use interdisciplinary (ID) team knowledge, aerial photographs, field observations, maps, etc.), and document your findings on Form 2, below.

When Citizen Information has been submitted regarding wilderness characteristics, document the submitted materials including: date of Submission; Name of District(s) and Field Office(s) Affected; Type of material Submitted (e.g. narrative, map, photo). Evaluate any submitted citizen information regarding the validity of proposed boundaries of the unit(s), the existence of roads and other boundary features, the size of the unit(s), and the presence or absence of wilderness characteristics based on relevant information available in the office (prior BLM inventories, ID team knowledge, aerial photographs, field observations, maps, etc.)

Conduct field reviews as necessary to verify information and to ascertain current conditions. Reach conclusions on current conditions including boundaries, size of areas and presence or absence of wilderness characteristics. Fully explain the basis for each conclusion on form 2, including any critical differences between BLM and citizen information.

Document your findings regarding current conditions for each inventoried area. Describe how the present conditions are similar to, or have changed from, the conditions documented in the original wilderness inventory. Document your findings on Form 2 for each inventory area. Cite to or attach data considered, including photographs, maps, GIS layers, field trip notes, project files, *etc.*

FORM 2 -- DOCUMENTATION OF CURRENT WILDERNESS INVENTORY CONDITIONS

Unit Number/Name: OR-034-045 -- Little Valley

Note: In February, 2004, the Vale District received from Oregon Natural Desert Association (ONDA) its evaluation of wilderness characteristics for what ONDA names its 92,556 acre “Freezeout Ridge Proposed WSA”. For reference, a hard copy of ONDA’s proposal is retained in this unit’s file. Information provided by ONDA’s proposal was considered and incorporated as appropriate for this BLM Wilderness Characteristics Inventory maintenance. OR-034-045 represents only a portion of ONDA’s proposal. ONDA’s proposal includes basically five 1970’s BLM inventory units (3-52, 3-310, 3-51, 3-50, and 3-65) which, respectively, are currently associated with the following BLM Wilderness Characteristic Inventory maintenance units: OR-034-026, OR-034-030, OR-034-027, OR-034-028, and OR-034-045.

For BLM unit OR-034-045, differences between BLM and ONDA regarding inventory unit boundary features are that, unlike ONDA’s proposal, BLM concludes that BLM routes 7321-0-0A0 (ONDA’s routes W3b and W2ab) and 7322-0-100 (ONDA’s route W3a) are roads (not motorized primitive trails [or which what ONDA terms a “way”]) and serve as boundary features of the BLM unit. Refer to each of the two Road Analysis forms and their affiliated BLM Photo Point Map and photographs associated with OR-034-045 for additional documentation. Additionally, BLM allows for the highway/utility corridor ROW width on the BLM unit’s northeastern-most boundary.

Description of Current Conditions: [Include land ownership, location, topography, vegetation features and summary of major human uses/activities.]

1. Is the unit of sufficient size?

Yes X No

Description: Refer to this inventory unit’s associated Map 1 for its location. The boundary of the 14,409 acre unit is more than twice the size as the Little Valley inventory unit identified in the late 1970’s, with the added area being public lands north of that historic unit (found records do not indicate the cause for those northern public lands to be excluded in the late 1970’s). The unit is bounded on its north by private land and a utility corridor, east by BLM road 7322-0-100, south by BLM road 7321-0-0A0, and on its west by BLM road 7321-0-00 and private land. The BLM natural-surfaced roads are in reasonably good passable condition when not water saturated, receiving a measure of mechanical maintenance as needed to keep them passable for relatively regular and continuous use.

2. Is the unit in a natural condition?

Yes X No N/A

Description: The unit is characterized by numerous short and predominately low profiled drainages emptying to the Malheur River located north and outside of the unit; these drainages are separated by a series of low-profiled ridges of varying widths and lengths, with ridge slope gradients varying from slight to very steep. The overall appearance of the unit is of rolling hills. Elevations range from approximately 2,500 to 3,650 feet with no notably USGS-labeled landmark features. Vegetation consists of non-native and native grasses and high desert shrubs and native grasses.

Refer to this unit's associated Map 1 and Map 2 for human imprints. They include 16.0 miles of rangeland fence, 6 earthen reservoirs, 4 fenced enclosures, 7 developed springs, approximately 3.5 miles of buried water pipeline with 2 surface troughs (also see 12/3/07 map in unit's folder file), and 9.4 miles of 7 motorized primitive trails (MPTs) which are located in numerous reaches of the unit. All land treatments (mechanical brush control, chemical application and drilled seedings during 1964 and 1965) are no longer visually apparent to the average visitor of the unit. Given the unit's larger size from the original 1970's inventory, and with the additional acreage area being substantially natural in appearance, unit OR-034-045, overall, appears to be affected primarily by the forces of nature with the imprint of humans being substantially unnoticeable to the average visitor.

BLM documents the presence of 6 of the total 7 MPTs within this unit for which no ONDA documentation is provided; the remaining 7th -- ONDA's W3c -- is recognized by ONDA as present but with only an "unk" identifier. ONDA's proposal does not quantify or indicate location of the other known man-made features of its proposed WSA while concluding that it appears affected primarily by the forces of nature with the imprint of man's work substantially unnoticeable. For comparative reference, refer to the BLM unit maps and ONDA's proposal, both located in this unit's inventory file folder.

3. Does the unit have outstanding opportunities for solitude?

Yes _____ No X N/A _____

Description: The unit's configuration is diverse, with its northernmost and southernmost reaches narrowing to between a quarter mile and one mile, respectively. Much of the unit's width ranges from 2.5 to 5.5 miles, while its north-south oriented greatest length does not exceed 6.5 miles and is as short as 3.5 miles. The shorter distances are predominately associated with the northern third of the unit due to the orientation and location of abutting private lands which narrow the dimensions of the unit in that area. There is an absence of adequate size and/or density of vegetation to provide for visual screening within the unit. Slopes have a slight to moderate topographic gradient throughout the unit. Although opportunities for solitude are available, the combination of the unit's generally low topographic profile, its lack of vegetative screening, and the shorter dimensions/distances of the upper third of the unit preclude outstanding opportunities for solitude.

ONDA states that its substantially larger "Freezeout Ridge Proposed WSA" possesses outstanding opportunities for solitude. Based on the current results of BLM's wilderness characteristics inventory maintenance, BLM does not have an inventory unit that

approaches that of ONDA's in this general area. While drawing no conclusion regarding solitude within ONDA's proposal, BLM recognizes that a unit of the general size, configuration and topography as ONDA's proposal may possibly possess attributes which may result in providing for outstanding opportunities of solitude.

4. Does the unit have outstanding opportunities for primitive and unconfined recreation?

Yes _____ No X N/A _____

Description: Predominate dispersed recreation activities include hiking, horseback riding and general sightseeing, with these activities predominately associated with some hunting of common upland and big game species (chukar, deer and antelope). There are no outstanding opportunities for notable photography. There are no special or unique features or attractions which would draw visitors to the unit. None of these activities or features of the unit -- individually or collectively -- provide outstanding opportunities for primitive and unconfined recreation within the unit.

ONDA states that due to its substantially larger size, its "Freezeout Ridge Proposed WSA" possesses outstanding opportunities for primitive recreation. ONDA also states that BLM indicated the 1970's BLM units "were not listed outstanding because each of the separate units was too small in size or too narrow". In the 1970's, BLM did not recognize any of its five inventory units affected presently by ONDA's proposal as possessing outstanding opportunities for primitive and unconfined recreation; nor do the present BLM inventory units affecting ONDA's proposal possess outstanding opportunities. BLM makes no determination of whether larger size – alone as ONDA contends, and/or considering other possible attributes – equates to outstanding opportunities for primitive and unconfined recreation within ONDA's "Freezeout Ridge Proposed WSA". Currently, as in the past, public lands associated with unit OR-034-045 do not possess outstanding opportunities for primitive and unconfined recreation for reasons stated in the opening paragraph, above.

5. Does the unit have supplemental values?

Yes X No _____ N/A _____

Description: BLM records indicate one site of the special status plant species, *Lipinus biddlei*, is within this BLM inventory unit (see this unit's associated Map 1 for location).

ONDA states that the SEORMP notes the presence leks of sage grouse in its substantially larger proposed Freezeout Ridge WSA. BLM acknowledges the presence of leks within the proposed WSA; however, to date BLM inventory efforts indicate no known sage grouse leks within this BLM inventory unit, and nor, to date, has any government agency or public (including ONDA) provided BLM any information to the contrary.

ONDA states its proposed Freezeout Ridge WSA "may also be home to Mojave Black-collared Lizard, Desert Horned Lizard, Ground Snake, Ferruginous Hawk, Pygmy

Rabbit, and White-tailed Antelope Squirrel,” which ONDA’s February 2004 submission to the Vale District declares are listed as “sensitive species” by the State of Oregon. As of 2009, the Mohave Black-collard Lizard, Desert Horned Lizard, Ground Snake and the White-tailed Antelope Squirrel were not considered sensitive by Oregon Department of Fish and Wildlife, BLM, or U.S. Fish and Wildlife Service. BLM acknowledges that habitat requirements may exist for the Mojave Black-collared Lizard, Desert Horned Lizard, Ground Snake, Ferruginous Hawk, Pygmy Rabbit, and White-tailed Antelope Squirrel; however, neither ONDA nor any other entity has provided BLM official documentation confirming the presence of these species within this inventory unit.

Summary of Findings and Conclusion

Unit Name and Number: OR-034-045 -- Little Valley

Summary Results of Analysis:

1. Does the area meet any of the size requirements? Yes No
2. Does the area appear to be natural? Yes No
3. Does the area offer outstanding opportunities for solitude or a primitive and unconfined type of recreation? Yes No NA
4. Does the area have supplemental values? Yes No NA

Conclusion -- check one:

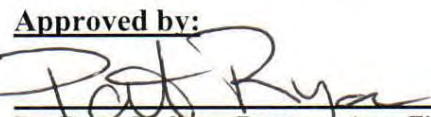
- The area, or a portion of the area, has wilderness character.
- The area does not have wilderness character.

Prepared by: 
 Robert Alward, Wilderness Planner, contractor

Team Members:

<u></u>	<u>2-25-2010</u>
Steve Christensen, Rangeland Management Specialist	Date
<u></u>	<u>3/10/10</u>
Shaney Rockefeller, Soil Scientist	Date
<u></u>	<u>2/10/10</u>
Dave Draheim, Outdoor Recreation Planner	Date
<u></u>	<u>02/08/2010</u>
Jon Westfall, Geologist	Date
<u></u>	<u>02/09/10</u>
Eian Ray, GIS Specialist, contractor	Date
<u></u>	<u>2/9/10</u>
Brent Grasty, GIS Coordinator	Date

(NOTE: Previous staff members who reviewed this unit include Botanist Jean Finley (retired 7/2008), and Wildlife Biologist Technician Sandy Vistine Ambor (transferred 8/2008)).

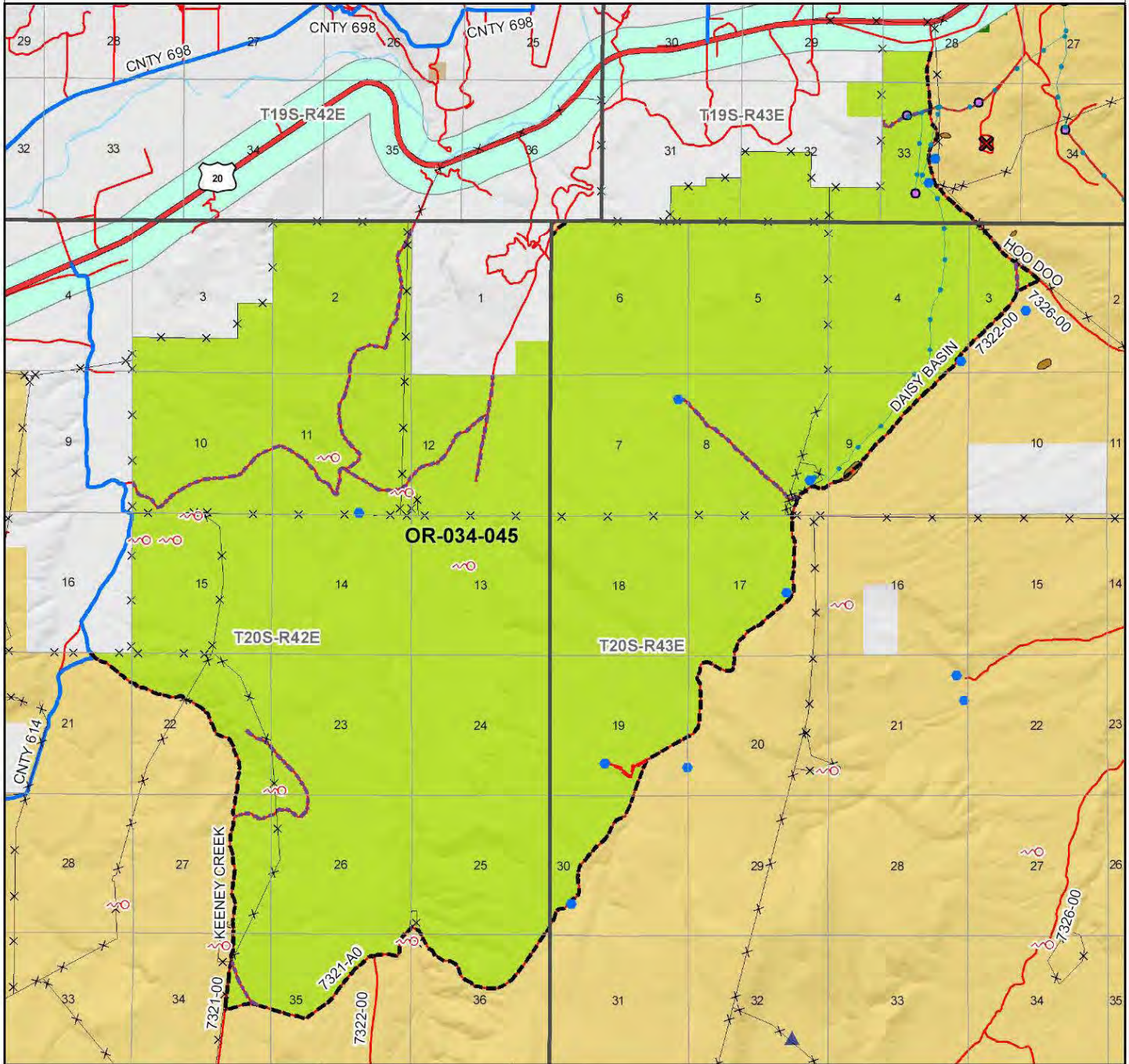
Approved by: 
 Pat Ryan, Malheur Resource Area Field Manager

3/30/2010
 Date

This form documents information that constitutes an inventory finding on wilderness characteristics. It does not represent a formal land use allocation or a final agency decision subject to administrative remedies under either 43 CFR parts 4 or 1610.5-2.

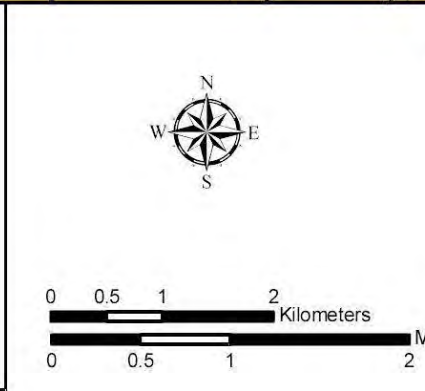
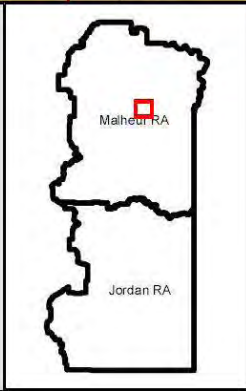
Wilderness Characteristics - Overview

Little Valley - OR-034-045 - Map 1 of 2



Legend

<ul style="list-style-type: none"> Developed Spring Wildlife Guzzler Earthen Reservoir Pipeline Trough Fence Storage Tank Surface Mining Disturbance Sage Grouse Lek Special Status Plant BLM Wild Char Inventory Unit Wilderness Study Area Mineral Material Site Road/Utility Right-of-Way Major Water Body 	<ul style="list-style-type: none"> Route Types - BLM Determination Boundary Road Motorized Primitive Trail (MPT) Discontinued Use Routes - Outside Wild Char Unit County Major Highway BLM Numbered & Other Routes <p>Land Ownership</p> <ul style="list-style-type: none"> Bureau of Land Management State Private Other Federal Land
---	---



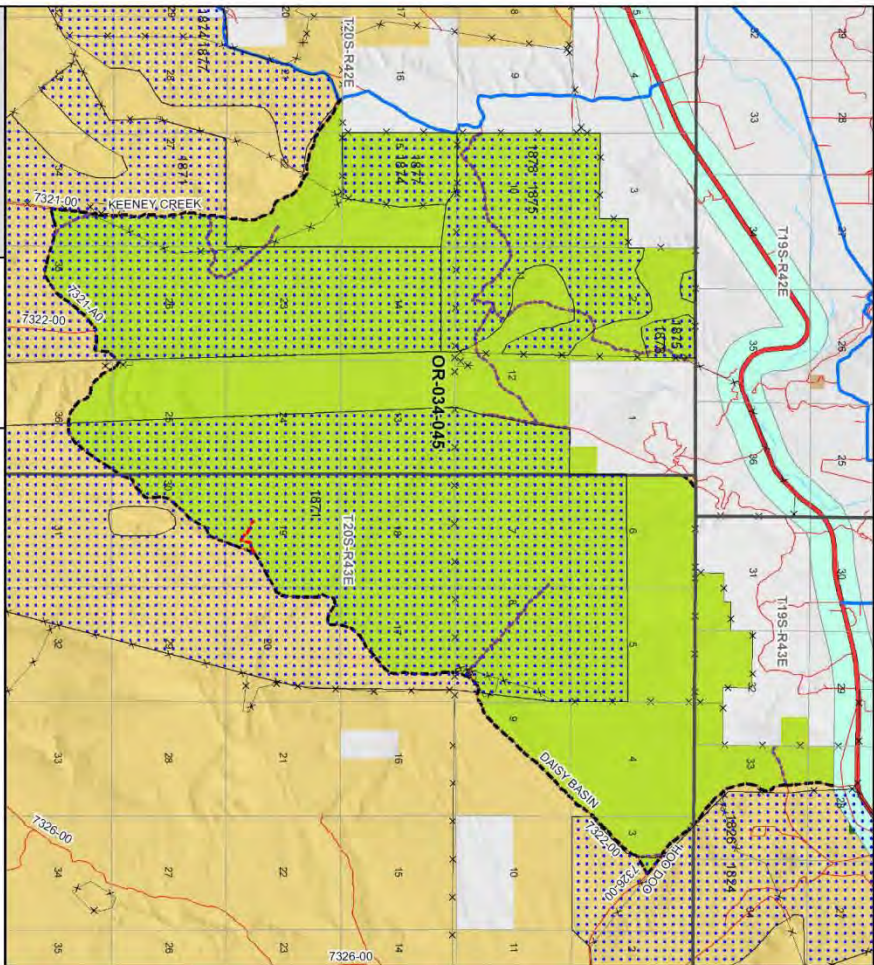
U.S. DEPARTMENT OF THE INTERIOR
BUREAU OF LAND MANAGEMENT

VALE DISTRICT
January 9, 2009

No warranty is made by the Bureau of Land Management as to the accuracy, reliability, or completeness of these data for individual or aggregate use with other data. Original data were compiled from various sources. This information may not meet National Map Accuracy Standards. This product was developed through digital means and may be updated without notification.

--FINAL--

**Wilderness Characteristics - Land Treatments
Little Valley - OR-034-045 - Map 2 of 2**



U.S. DEPARTMENT OF THE INTERIOR
BUREAU OF LAND MANAGEMENT

VALE DISTRICT
January 9, 2009

0 0.5 1 2 Miles
0 0.5 1 2 Kilometers

Legend

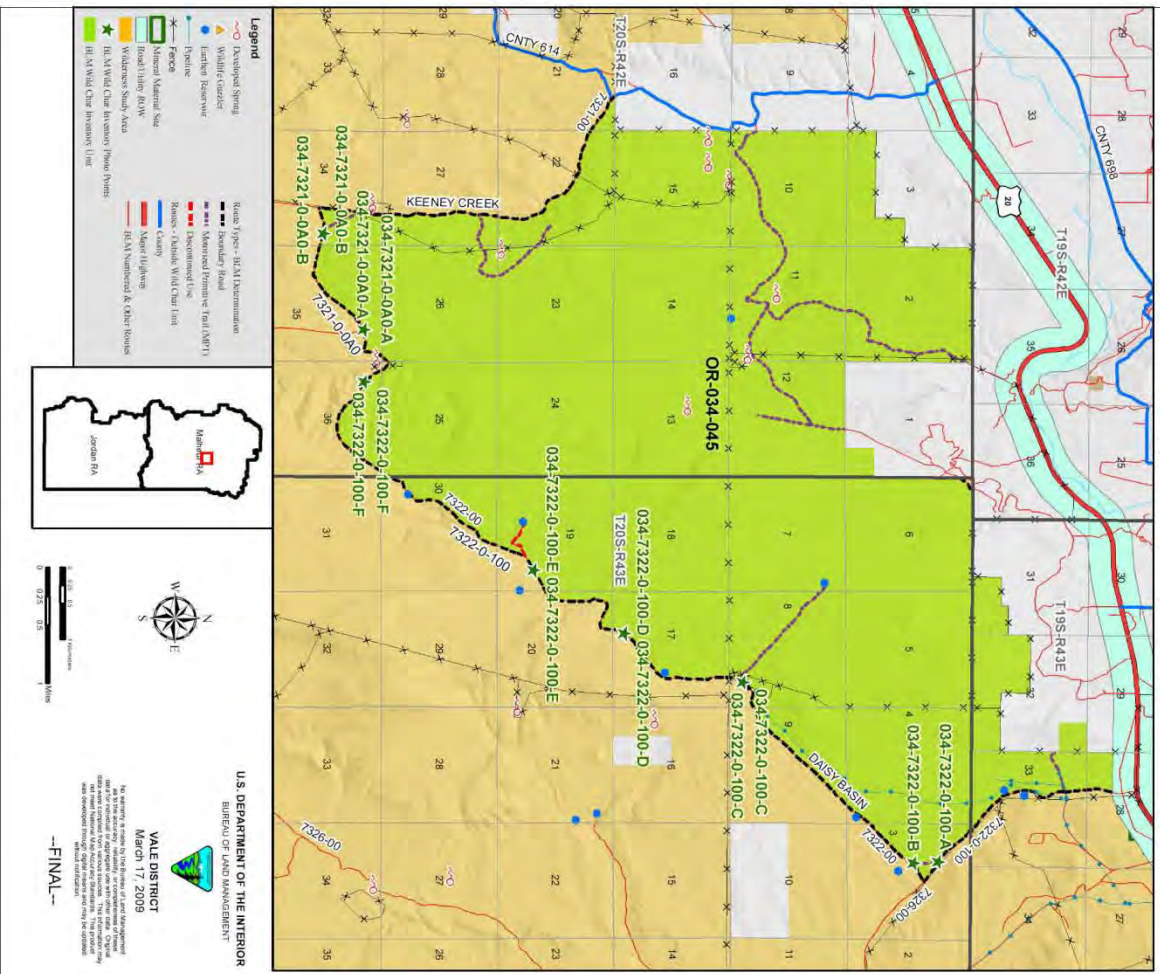
- Land Treatments: 1824 Vines Hill Seeding, 1828 Vines Hill Seeding, 1871 Callahan Brush Control, 1874 Winter Springs Seeding, 1875 Little Valley Seeding, 1877 Winter Springs Seeding, 1878 Little Valley Seeding
- Ownership: Private, BLM, Other
- Boundaries: Section, Township, Range, County, Water, Other

**Wilderness Characteristics - Land Treatments
Little Valley - OR-034-045 - Map 2 of 2**

OBJECTID*	NAME	TREATMENT TYPE	SEED GROUP	DATE
1824	VINES HILL SEEDING	Prescribed Burn	Not Applicable	1964
1828	VINES HILL SEEDING	Drill Seeding	Unknown	1964
1871	CALLAHAN BRUSH CONTROL	Chemical Treatment	Not Applicable	1965
1874	WINTER SPRINGS SEEDING	Plow/Disc	Not Applicable	1964
1875	LITTLE VALLEY SEEDING	Plow/Disc	Not Applicable	1965
1877	WINTER SPRINGS SEEDING	Drill Seeding	Unknown	1964
1878	LITTLE VALLEY SEEDING	Drill Seeding	Unknown	1965

Note: The Land Treatments represented by navy blue dots on the map to the left are labeled with the treatments' ObjectIDs listed in the first field of the Land Treatments table shown above. Multiple types of treatments may have been applied to the same area. For example, one treatment area may have been plowed and drill seeded - a record is shown in the table for each type of treatment.

**Wilderness Characteristics - BLM Photo Points
Little Valley - OR-034-045**



**Wilderness Characteristics - BLM Photo Points
Little Valley - OR-034-045**

PHOTO_LOCATION	DIRECTION	PHOTO_TYPE	PHOTO_DATE	COMMENTS
034-7322-0-100-A	SW	Route	20080520	Vehicle usage.
034-7322-0-100-B	E	Route	20080520	Speed limit sign, berms, visible vehicle usage.
034-7322-0-100-C	NE	Route	20080520	Speed limit sign, berms, visible usage.
034-7322-0-100-D	W	Route	20080520	Culvert, visible usage.
034-7322-0-100-E	W	Route	20080520	Culvert
034-7322-0-100-F	S	Route	20080520	Culvert
034-7322-0-100-G	NE	Route	20080520	Gravel on route.
034-7322-0-100-H	NE	Route	20080520	Culvert
034-7322-0-100-I	NW	Route	20080520	Culvert
034-7322-0-100-J	SW	Route	20080520	Visible vehicle usage.
034-7322-0-100-K	SW	Route	20080520	Cattle guard and cattle fence. Visible rd usage.
034-7322-0-100-L	NE	Route	20080520	Abandoned cabin
034-7322-0-100-M	NW	Route	20080520	Visible usage.
034-7321-0-0A0-A	W	Route	20080520	Visible vehicle usage, BLM sign.
034-7321-0-0A0-B	S	Route	20080520	Visible vehicle usage.
034-7321-0-0A0-C	E	Route	20080520	Visible vehicle usage.
034-7321-0-0A0-D	W	Route	20080520	Visible vehicle usage, BLM sign
034-7321-0-0A0-E	NW	Route	20080520	Visible usage.
034-7321-0-0A0-F	E	Route	20080520	Visible usage.
034-7322-0-100-A	N	Route	20080520	None

Note: The BLM Wild Char PhotoPoints displayed on the map are labeled with their Photo Locations. The BLM Photo Log table shown above lists the photos taken at their respective Photo Locations. Multiple photos may be taken at each Photo Location. Scenery and Project Photo Type pictures have their photo names provided in the Comments field.



034-7321-0-0A0-A-E.jpg



034-7321-0-0A0-B-E.jpg



034-7322-0-100-A-N.JPG



034-7321-0-0A0-A-S.jpg



034-7321-0-0A0-B-NW.jpg



034-7322-0-100-A-SW.JPG



034-7321-0-0A0-A-W.jpg



034-7321-0-0A0-B-W.jpg



034-7322-0-100-B-E.jpg



034-7322-0-100-B-NE.jpg



034-7322-0-100-B-W.jpg



034-7322-0-100-C-N.jpg

OR-034-045 Little Valley Page 2



034-7322-0-100-C-S.jpg



034-7322-0-100-C-W.jpg



034-7322-0-100-D-NE.jpg



034-7322-0-100-D-NW.jpg



034-7322-0-100-D-SE.jpg



034-7322-0-100-D-SW.jpg



034-7322-0-100-E-NE.jpg

OR-034-045 Little Valley Page 3



034-7322-0-100-E-SW.jpg



034-7322-0-100-F-NW.jpg



034-7322-0-100-F-S.jpg

H-6300-1-WILDERNESS INVENTORY MAINTENANCE IN BLM OREGON/WASHINGTON

APPENDIX C – ROAD* ANALYSIS

(Factors to consider when determining whether a route is a road for wilderness inventory purposes.)

Wilderness Inventory Unit Name/Number: OR-034-045 – Little Valley

Route Name and/or Identifier *(Include Transportation Plan Identifier, if known; include route number supplied by citizen information when available):*

BLM 7321-0-0A0

(This route is identified by ONDA as a combination of its “W3b way” [i.e., MPT] and its “W2ab”[for which ONDA provides no description of what type of route it represents]. Combined they represent a single route within its proposed “Freezeout Ridge proposed WSA”, which encompasses a much larger area than this BLM inventory unit.)

I. LOCATION: Refer to attached map (South boundary route of this BLM unit). **List photo point references (if applicable):** Refer to this BLM inventory unit’s associated hard copy of its BLM Photo Points map, and affiliated Photo Log and photos -- retained in this unit’s permanent hard copy file, and electronically retained under this unit’s subfolder Final Findings/GIS Products. Any applicable ONDA photos and affiliated Photo Log are electronically retained under Wilderness Characteristics/S/Citizen Proposals.

II. CURRENT PURPOSE OF ROUTE:

(Examples: Rangeland/Livestock Improvements (stock tank, developed spring, reservoir, fence, corral), Inholdings (ranch, farmhouse), Mine Site, Concentrated Use Site (camp site), Utilities (transmission line, telephone, pipeline), Administrative (project maintenance, communication site, vegetation treatment).)

Describe: This route -- and in combination with a northern segment of BLM 7322-0-100 -- is a main access route associated with this inventory unit which provides needed ongoing and regular access to rangeland/livestock improvements (spring developments and earthen reservoirs) by allotment permittees and the BLM for management of livestock, maintenance of the projects, and monitoring of associated activities. This route provides connector access for dispersed camping activities associated with the Daisy Basin area. This route also provides ongoing and regular connective access between the Harper Basin route (BLM 7321-0-00) and the Sand Hollow route (BLM 7322-0-00) proceeding northeast of the unit).

III. ROAD RIGHT-OF-WAY:

Is a road right-of-way associated with this route?

Yes _____ No X Unknown _____

IV. CONSTRUCTION

Yes X No _____

Examples: Paved _____ Bladed X Graveled _____ Roadside
Berms X Cut/Fill X Other _____

Describe: Date of construction is unknown. Topography and general nature of the terrain did not require much in the way of construction of this route, although there remains evidence of berms and cut/fill construction work. There remains evidence of blading to date, though more so due to ongoing maintenance activities on this route.

V. IMPROVEMENTS

Yes _____ No X

By Hand Tools _____ By Machine _____

Examples: Culverts _____ Stream Crossings _____ Bridges _____
Drainage _____ Barriers _____ Other _____

Describe:

VI. MAINTENANCE:

A. Is there Evidence or Documentation of Maintenance using hand tools or machinery? Yes X No _____

If yes: Hand Tools (Y/N) _____ **Machine (Y/N)** Y

Explain: Topography and general nature of the terrain does not require much in the way of maintenance of this route. This route received mechanical maintenance (blading) within the past 5 years and, budget permitting, BLM intends to provide such maintenance as needed to insure provision for regular and continuous use. (Note: maintenance has been conducted on this route since ONDA took its photos of this route.)

B. If the route is in good condition, but there is no evidence of maintenance, would mechanical maintenance with hand tools or machines be approved by BLM in the event this route became impassable?

Yes X No _____

Comments: This route is recognized by the BLM as a primary access route to a number of range improvement projects and is recognized as a significant access route for rangeland administration, as public access for recreational hunting and dispersed vehicle-supported camping, and as ongoing and regular connective access between the Harper Basin route (BLM 7321-0-00) and the Sand Hollow route (BLM 7322-0-00 proceeding northeast of the unit).

VII. REGULAR AND CONTINUOUS USE:

Yes No

Describe evidence (vehicle tracks observed) and other rationale for whether use has occurred and will continue to occur on a relatively regular basis:

This is a main route used to travel between Little Valley and Harper while not getting onto U.S. Highway 20. BLM personnel and allotment permittees use this route throughout the summer to maintain projects, administer grazing, and access other areas.

VIII. CONCLUSION:

To meet the definition of a road, items IV or V, and VI-A or B, and VII must be checked yes.

Road: Yes No

Explanation: Meets criteria of road, as explained above.

Evaluator(s): Shaney Rockefeller Date: 4/6/09
Shaney Rockefeller, Soil Scientist

Steve Christensen Date: 4-6-2009
Steve Christensen, Rangeland Management Specialist

* **road:** An access route which has been **improved and maintained** by **mechanical means** to insure **relatively regular and continuous use**. A way maintained solely by the passage of vehicles does not constitute a road.

a. **“Improved and maintained”** – Actions taken physically by people to keep the road open to vehicle traffic. “Improved” does not necessarily mean formal construction. “Maintained” does not necessarily mean annual maintenance.

b. **“Mechanical means”** – Use of hand or power machinery or tools.

c. **“Relatively regular and continuous use”** – Vehicular use that has occurred and will continue to occur on a relatively regular basis. Examples are: access roads for equipment to maintain a stock water tank or other established water sources; access roads to maintained recreation sites or facilities; or access roads to mining claims.

Following is the definition from Glossary of OSO 7-3-2007 Draft H-6300-1:

road: The BLM will continue to base the definition of what constitutes a “road” from the FLPMA’s legislative history. The language below is from the House of Representatives Committee Report 94-1163, page 17, dated May 15, 1976, on what became the FLPMA. It is the only statement regarding the definition of a road in the law or legislative history.

“The word ‘roadless’ refers to the absence of roads which have been improved and maintained by mechanical means to insure relatively regular and continuous use. A way maintained solely by the passage of vehicles does not constitute a road.”

The BLM previously adopted and will continue to use the following sub-definitions of certain words and phrases in the BLM road definition stated above:

a. **“Improved and maintained”** – Actions taken physically by people to keep the road open to vehicle traffic. “Improved” does not necessarily mean formal construction. “Maintained” does not necessarily mean annual maintenance.

b. **“Mechanical means”** – Use of hand or power machinery or tools.

c. **“Relatively regular and continuous use”** – Vehicular use that has occurred and will continue to occur on a relatively regular basis. Examples are: access roads for equipment to maintain a stock water tank or other established water sources; access roads to maintained recreation sites or facilities; or access roads to mining claims.

A road that was established or has been maintained solely by the passage of vehicles would not be considered a road, even if it is used on a relatively regular and continuous basis. Vehicle roads constructed by mechanical means but that are no longer being maintained by mechanical methods are not roads. Sole use of hands and feet to move rocks or dirt without the use of tools or machinery does not meet the definition of “mechanical means.” Roads need not be “maintained” on a regular basis but rather “maintained” when road conditions warrant actions to keep it in a usable condition. A dead-end (cherry-stem) road can form the boundary of an inventory area and does not by itself disqualify an area from being considered “roadless”.

H-6300-1-WILDERNESS INVENTORY MAINTENANCE IN BLM OREGON/WASHINGTON

APPENDIX C – ROAD* ANALYSIS

(Factors to consider when determining whether a route is a road for wilderness inventory purposes.)

Wilderness Inventory Unit Name/Number: OR-034-045 – Little Valley

Note: This BLM unit affected by ONDA’s Freezeout Ridge proposed WSA.

Route Name and/or Identifier (*Include Transportation Plan Identifier, if known; include route number supplied by citizen information when available*):

BLM 7322-0-100.

(This route is identified by ONDA as a (northern) portion of its “W3a way” (i.e., MPT).

IX. LOCATION: Refer to attached map. (Is the East boundary route of this BLM unit; common boundary route with BLM unit OR-034-027). **List photo point references (if applicable):** Refer to this BLM inventory unit’s associated hard copy of its BLM Photo Points map, and affiliated Photo Log and photos -- retained in this unit’s permanent hard copy file, and electronically retained under this unit’s subfolder Final Findings/GIS Products. Any applicable ONDA map, photos and affiliated Photo Log are electronically retained under Wilderness Characteristics/Citizen Proposals.

X. CURRENT PURPOSE OF ROUTE:

(Examples: Rangeland/Livestock Improvements (stock tank, developed spring, reservoir, fence, corral), Inholdings (ranch, farmhouse), Mine Site, Concentrated Use Site (camp site), Utilities (transmission line, telephone, pipeline), Administrative (project maintenance, communication site, vegetation treatment).)

Describe: This route -- and in combination with this unit’s south boundary route 7321-0-0A0 and it’s west boundary route 7321-0-00 – constitutes a main access route associated with this inventory unit and points south of this unit which provides needed ongoing and regular access to rangeland/livestock improvements (spring developments and reservoir enclosures) by allotment permittees and the BLM for management of livestock, maintenance of the projects, and monitoring of associated activities. This is a main route used to travel between Little Valley and Harper while not getting onto U.S. Highway 20. This route also provides access to popular dispersed camping sites associated with Freezeout Ridge area.

XI. ROAD RIGHT-OF-WAY:

Is a road right-of-way associated with this route?

Yes _____ No **X** Unknown _____

XII. CONSTRUCTION

Yes **X** No _____

Examples: Paved _____ Bladed **X** Graveled _____ Roadside
Berms **X** Cut/Fill **X** Other _____

Describe: Date of construction is unknown, although it included blading, and there remains evidence of berms and cut/fill construction work. There remains evidence of blading to date, though more so due to ongoing maintenance activities on this route.

XIII. IMPROVEMENTS

Yes **X** No _____

By Hand Tools _____ By Machine _____

Examples: Culverts **X** Stream Crossings **X** Bridges _____
Drainage _____ Barriers _____ Other _____

Describe: A hardened crossing was completed on Cabin Creek during the last road maintenance cycle. There is a culvert on crossing approximately in section 4 on the north end of this route.

XIV. MAINTENANCE:

A. Is there Evidence or Documentation of Maintenance using hand tools or machinery? Yes **X** No _____

If yes: Hand Tools (Y/N) _____ Machine (Y/N) **Y**

Explain: This route received mechanical maintenance (blading) within the past 5 years and, budget permitting, BLM intends to provide such maintenance as needed to insure provision for regular and continuous use. The maintenance has been conducted on this route since ONDA took their photos of this route.

B. If the route is in good condition, but there is no evidence of maintenance, would mechanical maintenance with hand tools or machines be approved by BLM in the event this route became impassable?

Yes X No _____

Comments: The route is in good condition. It is passable by a high clearance vehicle. As an important main connector route, maintenance would be approved to ensure regular and continuous use over time.

XV. REGULAR AND CONTINUOUS USE:

Yes X No _____

Describe evidence (vehicle tracks observed) and other rationale for whether use has occurred and will continue to occur on a relatively regular basis:

This is a main route used to travel between Little Valley and Harper while not getting onto U.S. Highway 20. BLM personnel and allotment permittees use this route many times throughout the summer to maintain projects, administer grazing, and access other areas. This route also provides access during much of the calendar year to popular dispersed camping sites associated with the Freezeout Ridge area to the south of this inventory unit.

XVI. CONCLUSION:

To meet the definition of a road, items IV or V, and VI-A or B, and VII must be checked yes.

Road: Yes X No _____

Explanation: This route meets road criteria, as described and explained above.

Evaluator(s): Shaney Rockefeller Date: 4/6/09
Shaney Rockefeller, Soil Scientist

Steve Christensen Date: 4-6-2009
Steve Christensen, Rangeland Management Specialist

* **road:** An access route which has been **improved and maintained by mechanical means** to insure **relatively regular and continuous use**. A way maintained solely by the passage of vehicles does not constitute a road.

a. **“Improved and maintained”** – Actions taken physically by people to keep the road open to vehicle traffic. “Improved” does not necessarily mean formal construction. “Maintained” does not necessarily mean annual maintenance.

b. **“Mechanical means”** – Use of hand or power machinery or tools.

c. **“Relatively regular and continuous use”** – Vehicular use that has occurred and will continue to occur on a relatively regular basis. Examples are: access roads for equipment to maintain a stock water tank or other established water sources; access roads to maintained recreation sites or facilities; or access roads to mining claims.

Following is the definition from Glossary of OSO 7-3-2007 Draft H-6300-1:

road: The BLM will continue to base the definition of what constitutes a “road” from the FLPMA’s legislative history. The language below is from the House of Representatives Committee Report 94-1163, page 17, dated May 15, 1976, on what became the FLPMA. It is the only statement regarding the definition of a road in the law or legislative history.

“The word ‘roadless’ refers to the absence of roads which have been improved and maintained by mechanical means to insure relatively regular and continuous use. A way maintained solely by the passage of vehicles does not constitute a road.”

The BLM previously adopted and will continue to use the following sub-definitions of certain words and phrases in the BLM road definition stated above:

a. **“Improved and maintained”** – Actions taken physically by people to keep the road open to vehicle traffic. “Improved” does not necessarily mean formal construction. “Maintained” does not necessarily mean annual maintenance.

b. **“Mechanical means”** – Use of hand or power machinery or tools.

c. **“Relatively regular and continuous use”** – Vehicular use that has occurred and will continue to occur on a relatively regular basis. Examples are: access roads for equipment to maintain a stock water tank or other established water sources; access roads to maintained recreation sites or facilities; or access roads to mining claims.

A road that was established or has been maintained solely by the passage of vehicles would not be considered a road, even if it is used on a relatively regular and continuous basis. Vehicle roads constructed by mechanical means but that are no longer being maintained by mechanical methods are not roads. Sole use of hands and feet to move rocks or dirt without the use of tools or machinery does not meet the definition of “mechanical means.” Roads need not be “maintained” on a regular basis but rather “maintained” when road conditions warrant actions to keep it in a usable condition. A dead-end (cherry-stem) road can form the boundary of an inventory area and does not by itself disqualify an area from being considered “roadless”.