

Wilderness Inventory Unit Index of Documents  
**Lava OR-036-081, 9 total pages**

Page 1: Index Cover Sheet

[Page 2: Form 1 – Documentation of BLM Wilderness Inventory: Findings on Record](#)

[Page 5: Form 2 – Documentation of Current Wilderness Inventory Conditions](#)

[Page 8: Form 2 – Summary of Findings and Conclusion](#)

[Page 9: Wilderness Characteristics Overview–Lava OR-036-081 Map 1 of 1](#)

**Prepared by:**  
**U.S. Department of the Interior**  
**Bureau of Land Management**  
**Vale District Office**  
**100 Oregon Street**  
**Vale, Oregon 97918**



## **H-6300-1-WILDERNESS INVENTORY MAINTENANCE IN BLM OREGON/WASHINGTON**

### **APPENDIX B – INVENTORY AREA EVALUATION**

#### **Evaluation of Current Conditions:**

- 1) Document and review the existing BLM wilderness inventory findings on file, if available, regarding the presence or absence of individual wilderness characteristics, using Form 1, below.
- 2) Consider relevant information regarding current conditions available in the office to identify and describe any changes to the existing information (use interdisciplinary (ID) team knowledge, aerial photographs, field observations, maps, etc.), and document your findings on Form 2, below.

When Citizen Information has been submitted regarding wilderness characteristics, document the submitted materials including: date of Submission; Name of District(s) and Field Office(s) Affected; Type of material Submitted (e.g. narrative, map, and photos). Evaluate any submitted citizen information regarding the validity of proposed boundaries of the unit(s), the existence of roads and other boundary features, the size of the unit(s), and the presence or absence of wilderness characteristics based on relevant information available in the office (prior BLM inventories, ID team knowledge, aerial photographs, field observations, maps, etc.)

Conduct field reviews as necessary to verify information and to ascertain current conditions. Reach conclusions on current conditions including boundaries, size of areas and presence or absence of wilderness characteristics. Fully explain the basis for each conclusion on form 2, including any critical differences between BLM and citizen information.

Document your findings regarding current conditions for each inventoried area. Describe how the present conditions are similar to, or have changed from, the conditions documented in the original wilderness inventory. Document your findings on Form 2 for each inventory area. Cite to or attach data considered, including photographs, maps, GIS layers, field trip notes, project files, *etc.*

**Year:** 2011      **Unit Number/Name:** OR-036-081--Lava

**FORM 1 -- DOCUMENTATION OF BLM WILDERNESS INVENTORY  
FINDINGS ON RECORD**

**1. Is there existing BLM wilderness inventory information on all or part of this area?**

Yes  No  (If yes, and if more than one unit is within the area, list the names of those units.):

**A.) Inventory Source(s) -- (X)** Denotes all applicable BLM Inventory files, printed maps, or published BLM Decision documents with information pertaining to this unit.

**Wilderness Inventories**

- (X) 1978 – BLM Wilderness Inventory Unit 3-129 of OR-03-09-18 Lava (unpublished BLM documents stored in Vale District case files)
- (X) April 1979 – *Wilderness -- Proposed Initial Inventory – Roadless Areas and Islands Which Clearly Do Not have Wilderness Characteristics, Oregon and Washington*

**Wilderness Decision Documents**

- (X) August 1979 – *Wilderness Review – Initial Inventory, Final Decision on Public Lands Obviously Lacking Wilderness Characteristics and Announcement of Public Lands to be Intensively Inventoried for Wilderness Characteristics, Oregon and Washington* (green document)
- ( ) October 1979 – *Wilderness Review – Intensive Inventory - Oregon, Proposed Decision on the Intensive Wilderness Inventory of Selected Areas* (grey document).
- ( ) March 1980 – *Wilderness Review – Intensive Inventory; Final Decisions on 30 Selected Units in Southeast Oregon and Proposed Decisions on Other Intensively Inventoried Units in Oregon and Washington* (orange document)
- ( ) November 1980 - *Wilderness Inventory – Oregon and Washington, Final Intensive Inventory Decisions* (brown document)
- ( ) November 1981 *Stateline Intensive Wilderness Inventory Final Decision, Oregon, Idaho, Nevada, Utah* (tan document).

**B.) Inventory Unit Name(s)/Number(s)**

BLM 3-129 of OR-03-09-18 Lava

**C.) Map Name(s)/Number(s)**

- Final Decision – Initial Wilderness Inventory Map, August 1979, Oregon
- Proposed Decision -- Intensive Wilderness Inventory of Selected Areas Map, October 1979, Oregon
- Intensive Wilderness Inventory Map, March 1980, Oregon
- Intensive Wilderness Inventory --Final Decisions Map, November 1980, Oregon.
- November, 1981 *Stateline Intensive Wilderness Inventory Final Decision, Oregon, Idaho, Nevada, Utah* (tan document).

**D.) BLM District(s)/Field Office(s)**

Vale District Office

Jordan Field Office

**2. BLM Inventory Findings on Record**

(Existing inventory information regarding wilderness characteristics (if more than one BLM inventory unit is associated with the area, list each unit and answer each question individually for each inventory unit):

**Inventory Source:** See above.

<b>Unit#/Name</b>	<b>Size (historic acres)</b>	<b>Natural Condition? Y/N</b>	<b>Outstanding Solitude? Y/N</b>	<b>Outstanding Primitive &amp; Unconfined Recreation? Y/N</b>	<b>Supplemental Values? Y/N</b>
3-129 of OR-03-09-18 Lava	8,360	*	N	N	*
<b>TOTAL</b>	8,360				

\*- These criteria were not specifically addressed during the inventory of this unit.

## **H-6300-1-WILDERNESS INVENTORY MAINTENANCE IN BLM OREGON/WASHINGTON**

### **APPENDIX B – INVENTORY AREA EVALUATION**

#### **Evaluation of Current Conditions:**

- 1) Document and review the existing BLM wilderness inventory findings on file, if available, regarding the presence or absence of individual wilderness characteristics, using Form 1, below.
- 2) Consider relevant information regarding current conditions available in the office to identify and describe any changes to the existing information (use interdisciplinary (ID) team knowledge, aerial photographs, field observations, maps, etc.), and document your findings on Form 2, below.

When Citizen Information has been submitted regarding wilderness characteristics, document the submitted materials including: date of Submission; Name of District(s) and Field Office(s) Affected; Type of material Submitted (e.g. narrative, map, and photos). Evaluate any submitted citizen information regarding the validity of proposed boundaries of the unit(s), the existence of roads and other boundary features, the size of the unit(s), and the presence or absence of wilderness characteristics based on relevant information available in the office (prior BLM inventories, ID team knowledge, aerial photographs, field observations, maps, etc.)

Conduct field reviews as necessary to verify information and to ascertain current conditions. Reach conclusions on current conditions including boundaries, size of areas and presence or absence of wilderness characteristics. Fully explain the basis for each conclusion on form 2, including any critical differences between BLM and citizen information.

Document your findings regarding current conditions for each inventoried area. Describe how the present conditions are similar to, or have changed from, the conditions documented in the original wilderness inventory. Document your findings on Form 2 for each inventory area. Cite to or attach data considered, including photographs, maps, GIS layers, field trip notes, project files, *etc.*

## **FORM 2 -- DOCUMENTATION OF CURRENT WILDERNESS INVENTORY CONDITIONS**

**Unit Number/Name:** OR-036-081-Lava

---

**Description of Current Conditions:** [Include land ownership, location, topography, vegetation features and summary of major human uses/activities.]

### **1. Is the unit of sufficient size?**

Yes   X   No       

**Description:** Refer to this inventory unit's associated Map 1 for its location. The boundary of the 8,307 acre unit is nearly the same as the BLM inventory unit 3-129 of OR-03-09-18 during the 1970's meeting the size criteria. The only difference being the exclusion of utility corridor right-of-way width for County Road 798 and one mineral material site right-of ways associated with the county road. Acreage for unit OR-036-081 in Form 2 is calculated from BLM GIS information. The remaining 53 acre difference from Form 1 is the acreage contained within the utility corridor and mineral material site rights-of-way. The unit is bounded on its west and northwest side by County Road 799 and private land parcels, on its north and northeast side by one mineral material site right-of-way, one short section of a BLM non-number road, one private land parcel, and the utility corridor right-of-way of County Road 798, and on its south side by County Road 995 and numerous private land parcels. The natural-surfaced roads are in reasonably good passable condition when not water saturated, receiving a measure of mechanical maintenance as needed to keep them passable for regular and continuous (seasonal) basis.

### **2. Is the unit in a natural condition?**

Yes   X   No        N/A       

**Description:** The unit is dominated by low profiled rolling lava mounds and extended nearly flat terrain where lava flows do not exist. Elevations range from 4,279 feet to 4,528 feet, with the upper elevations located mostly in the unit's south central sector. The unit consists mainly of lava fields with only the extreme western portion containing small drainages that flow toward the west into Cow Creek. Sparsely populated vegetation throughout the unit consists predominately of big and low sagebrush with both native and non-native grass species.

Refer to this inventory unit's associated Map 1 and Map 2 for its human developments. They include 7.2 miles of 14 motorized primitive trail (MPT) one earthen reservoir, one structure in the extreme northeast corner of the unit. Given its size relative to the minimal evidence of man-made developments, the unit appears to be affected primarily by the forces of nature with the imprint of humans substantially unnoticeable to the average visitor.

**3. Does the unit have outstanding opportunities for solitude?**Yes \_\_\_\_\_ No  N/A \_\_\_\_\_

**Description:** The character of the inventory unit has not changed since the 1970's. The unit is extremely irregular in shape. The width of the unit averages about two miles wide but varies with its narrowest area approximately one mile in width and its widest area being about 4.0 miles long while the unit is up to 6.0 miles in length. Length also varies widely throughout the unit. The unit is essentially flat while relief in elevation fluctuates by only a few feet if one would traverse the unit. Since the unit is comprised of mainly lava beds, vegetation can be extremely limited across the landscape and does not provide any opportunities for solitude or a sense of isolation anywhere within the unit. The sights and sounds emanating from traffic along U.S. Highway 95 less than two miles distance from the unit's southern boundary also detract from opportunities for solitude along much of the southeastern portion of the unit. As a result of the area's size relative to its shape, the absence of vegetative screening, and the lack of diversity in relief, there is no outstanding opportunities for solitude. BLM concludes that unit OR-036-081 does not provide outstanding opportunities for solitude.

**4. Does the unit have outstanding opportunities for primitive and unconfined recreation?**Yes \_\_\_\_\_ No  N/A \_\_\_\_\_

**Description:** The most dominate dispersed recreation activities within the unit would be hiking throughout the lava beds or hunting of game species (primarily deer, chukar and antelope) within limited areas not containing lava along most of the southern and western boundaries. Other than nearly flat lava flows covering over 75 percent of the unit there are no unique or special features associated with the unit that would attract a visitor who is seeking a primitive and unconfined recreational experience. Recreational pursuits within the area, individually or collectively, are not outstanding in character or nature. BLM concludes that unit OR-036-081 does not provide outstanding opportunities for primitive and unconfined recreation.

**5. Does the unit have supplemental values?**Yes  No \_\_\_\_\_ N/A \_\_\_\_\_

**Description:** BLM has documented one sage grouse lek within the unit. The bird is a BLM special status animal species.

**Summary of Findings and Conclusion**

**Unit Name and Number:** OR-036-081—Lava

**Summary Results of Analysis:**

- 1. Does the area meet any of the size requirements?  Yes  No
- 2. Does the area appear to be natural?  Yes  No
- 3. Does the area offer outstanding opportunities for solitude or a primitive and unconfined type of recreation?  Yes  No  NA
- 4. Does the area have supplemental values?  Yes  No  NA

**Conclusion -- check one:**

The area, or a portion of the area, has wilderness character.

The area does not have wilderness character.

**Prepared by:** Jack Wenderoth 4-5-11  
Jack Wenderoth, Planning Contractor

**Team Members:**

<u>Aimee Huff</u>	<u>4/5/2011</u>
Aimee Huff, Rangeland Management Specialist	Date
<u>Eian Ray</u>	<u>4-5-11</u>
Eian Ray, GIS Specialist, Contractor	Date
<u>Garth R. Ross</u>	<u>4/5/2011</u>
Garth Ross, Wildlife Biologist	Date
<u>Brent Grasty</u>	<u>4/5/11</u>
Brent Grasty, GIS Coordinator	Date

**Approved by:**

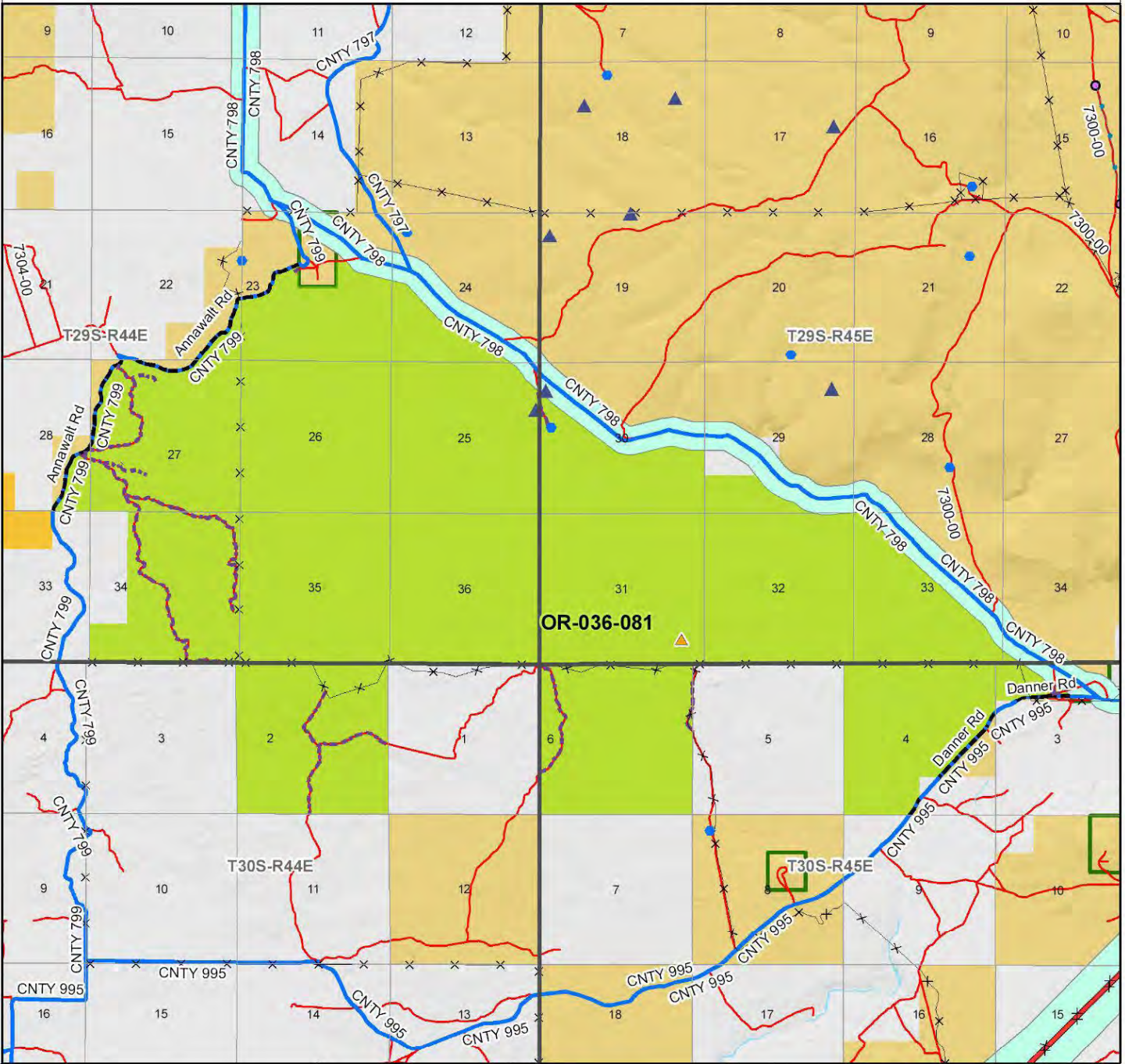
Carolyn R. Freeborn 4/5/2011  
Carolyn Freeborn, Jordan Resource Area Field Manager Date

*This form documents information that constitutes an inventory finding on wilderness characteristics. It does not represent a formal land use allocation or a final agency decision subject to administrative remedies under either 43 CFR parts 4 or 1610.5-2.*



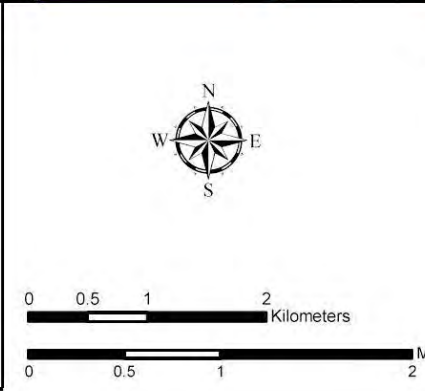
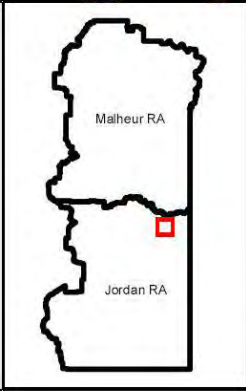
# Wilderness Characteristics - Overview

## Lava - OR-036-081 - Map 1 of 1



**Legend**

<ul style="list-style-type: none"> <li> Developed Spring</li> <li> Wildlife Guzzler</li> <li> Earthen Reservoir</li> <li> Pipeline</li> <li> Trough</li> <li> Fence</li> <li> Storage Tank</li> <li> Surface Mining Disturbance</li> <li> Sage Grouse Lek</li> <li> Special Status Plant</li> <li> BLM Wild Char Inventory Unit</li> <li> Wilderness Study Area</li> <li> Mineral Material Site</li> <li> Road/Utility Right-of-Way</li> <li> Major Water Body</li> </ul>	<ul style="list-style-type: none"> <li><b>Route Types - BLM Determination</b></li> <li> Boundary Road</li> <li> Motorized Primitive Trail (MPT)</li> <li> Discontinued Use</li> <li><b>Routes - Outside Wild Char Unit</b></li> <li> Major Highway</li> <li> BLM Numbered &amp; Other Routes</li> <li><b>Land Ownership</b></li> <li> Bureau of Land Management</li> <li> State</li> <li> Private</li> <li> Other Federal Land</li> </ul>
---	---



**U.S. DEPARTMENT OF THE INTERIOR**  
BUREAU OF LAND MANAGEMENT

**VALE DISTRICT**  
March 16, 2011

No warranty is made by the Bureau of Land Management as to the accuracy, reliability, or completeness of these data for individual or aggregate use with other data. Original data were compiled from various sources. This information may not meet National Map Accuracy Standards. The product was developed through digital means and may be updated without notification.

**--FINAL--**