

Alaska Native Vietnam-era Veterans Program of 2019

Instructions for using the online Available Lands Map tool


These instructions will help you identify and eventually select lands that are currently and potentially available to those eligible under the Alaska Native Vietnam era veterans land allotment section of the 2019 Dingell Act, or the “Alaska Native Veteran Program of 2019,” for short. The map is updated regularly as additional lands are made available.

These instructions will also help you learn about and experiment with additional tools to help indicate desired land for selection, but remember that **they will not be live to use until rules for the program are published later in 2020.**

You can download these instructions directly from the [Available Lands Map](#) or use the Available Lands Map link on [BLM Alaska’s exclusive web site](#) for the Alaska Native Veteran Program of 2019.

STEP 1 | Access. To access the Available Lands Map, click [here](#) or copy and paste the following address into your browser’s address bar: <https://arcg.is/1HTrrO>. Ensure you have these instructions printed or open in a separate window for reference.

STEP 2 | Menu items. The menu is represented by a series of icons called “widgets” near the top right of your screen (*Figure 1* below). The selected widget is highlighted in white while the rest are grayed out. Each widget displays a different menu, or “panel,” of tools on the right side of your screen.

The Layers widget  is active by default when you access the map (see the red circle in *Figure 1*).

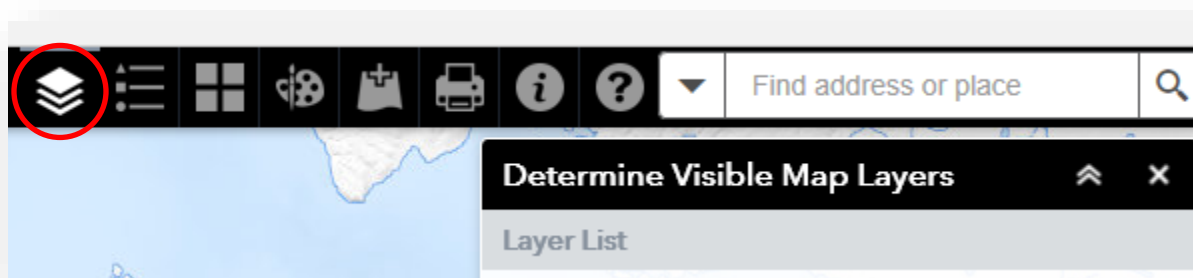




Figure 1

This guide will lead you through the other tools as you need them, but you can Click the Help menu

 widget anytime for information about the menu items and how to use them. Remember to click the Layers
 widget again to return to the default screen.

STEP 3 | Map navigation.

Basic navigation is similar to popular Internet maps that you probably already use. The map will open on your screen by default **showing only lands that are currently available**, which appear as polygons outlined in black. (see *Figure 2* at right).

Zoom in and out using your mouse as in any popular Internet mapping program or use the “+” and “-” icons near the top left of your screen (see *Figure 2* inset at right).

Click and hold your mouse button down to drag the map in any direction.

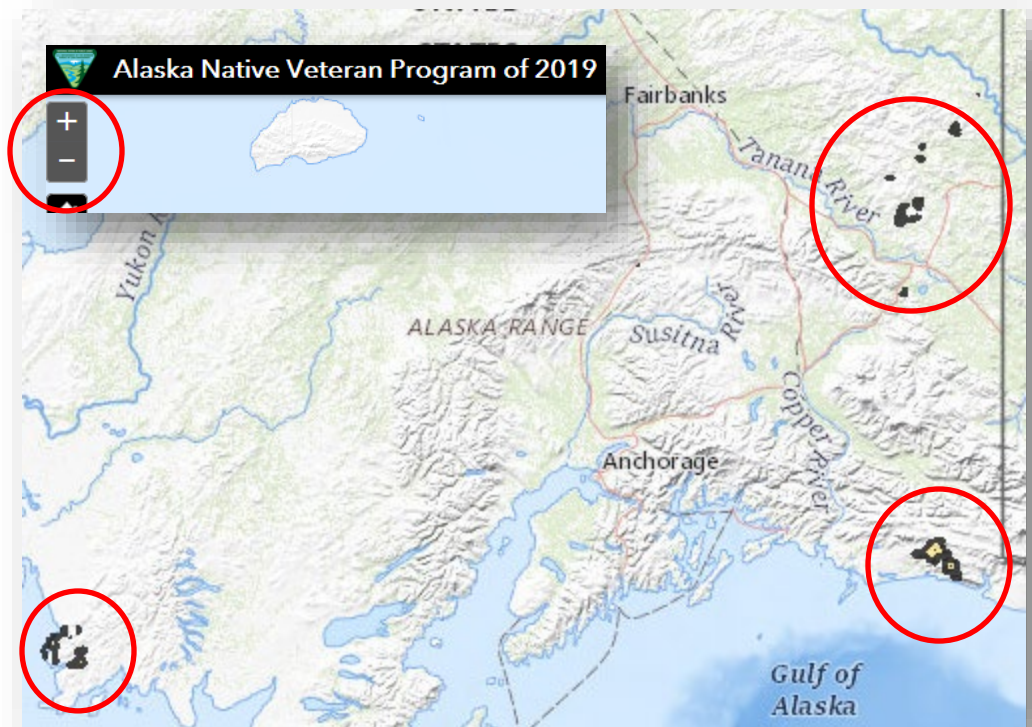


Figure 2

STEP 4 | Changing what is displayed. Most users do not need to change the default layers displayed, but potentially available lands can also be displayed in the Determine Visible Map Layers panel. Click the small, gray arrow to the left of the ‘Availability of Lands for Selection’ to expand the layer (see *Figure 3* at right).

Select any of the four categories of potentially available lands to display them on the map, as depicted in *Figure 4* below.

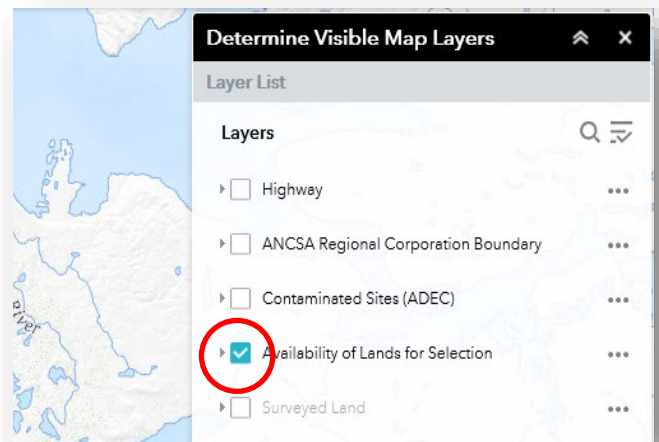


Figure 3

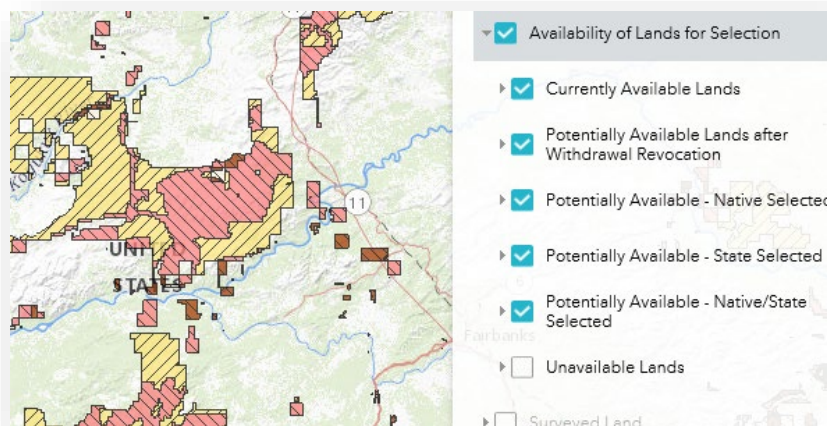



Figure 4

For help seeing lower layers, refer to “*Step 4 Transparency Addendum*” on page 6.

STEP 5 | How to create a map to submit with the application. You can learn about and experiment with

additional tools to help indicate desired land for selection by using the Draw widget . These tools will be permitted to use for allotment application submission only after rules are published for the program later in 2020. However, anyone can get familiar with the tools now. Remember that allotments must be 2.5-160 acres.

The following steps will guide you through the process of selecting desired lands and printing your selections as a PDF document to submit with your application once rules are approved later in 2020. Please note that your selections will not be saved online, nor can they be submitted using this system. Prints and PDFs are date stamped, and those dated prior to rules being approved will not be valid or accepted with applications.

- a) Navigate the map as discussed in Step 3 so the desired area containing available lands is zoomed in on the map and displaying on your screen

- b) Click the Draw  widget.

- c) Select the polygon draw mode (see highlighted shape in *Figure 5* at right). This tool will be used to mark the area of your desired selection. Additional options and tools will display below the polygon once it is selected.

- d) Click the button to the right of “Show area measurement” (*Figure 6*) to activate it. The button will turn green when activated, and additional choices will appear. Ensure “acres” is selected in the block marked “Unit,” just under the green button (*Figure 6*).

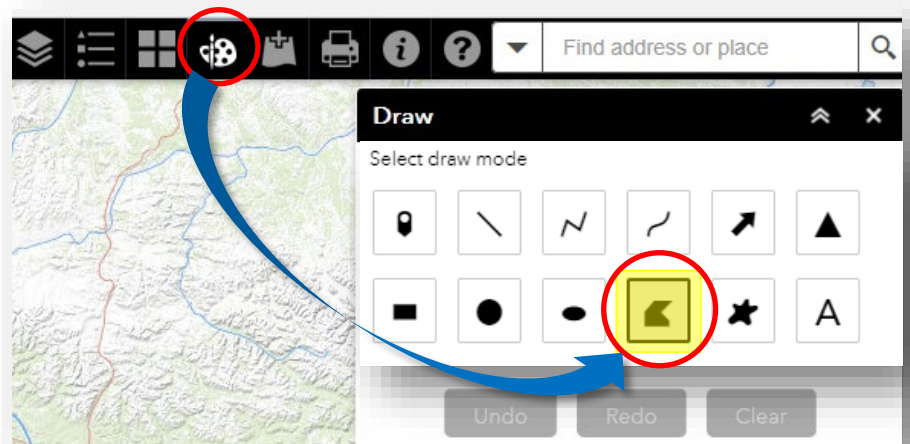


Figure 5

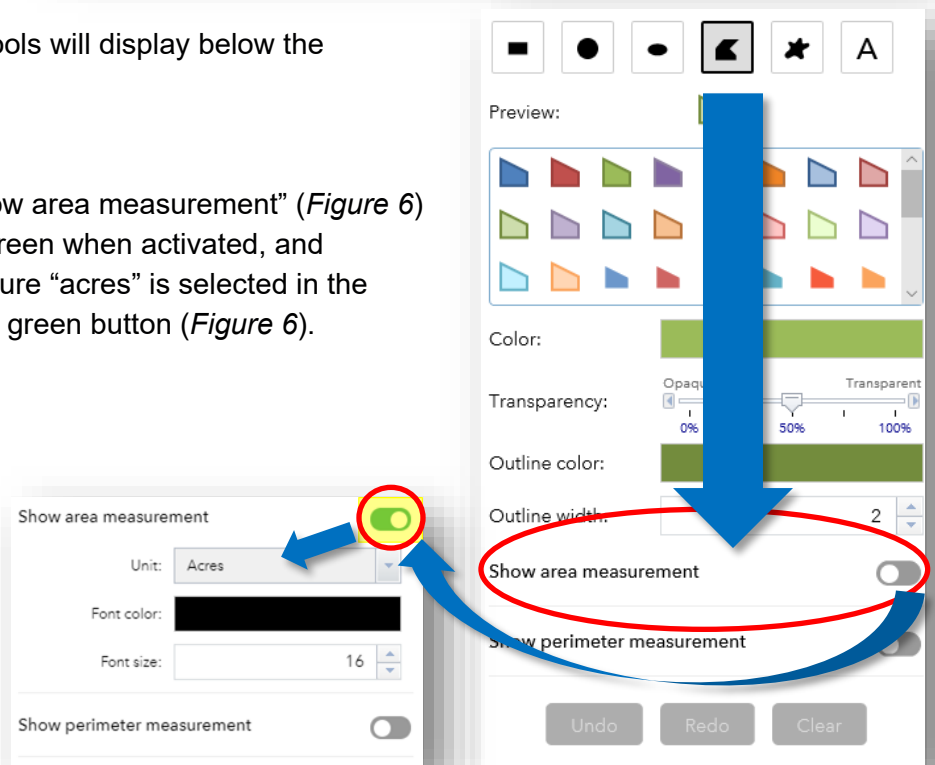


Figure 6

INSTRUCTIONS FOR USING THE ONLINE AVAILABLE LANDS MAP TOOL

- e) Click on the map once and release to mark the first point of your desired selection area. Repeat this with the second point, and so on. You will see lines connecting the points to one another to outline your selected area. Double click the last point to create your selection area, and the total acreage will display within the selected area as seen to the right in *Figure 7*.

If you make a mistake, simply use the “Undo” (for one step) or “Clear” buttons (to start over) at the bottom of the Draw tool panel. See *Figure 8* below.

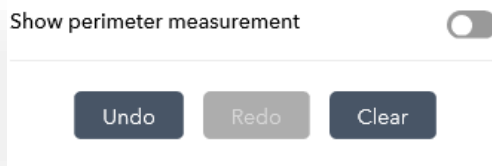


Figure 8

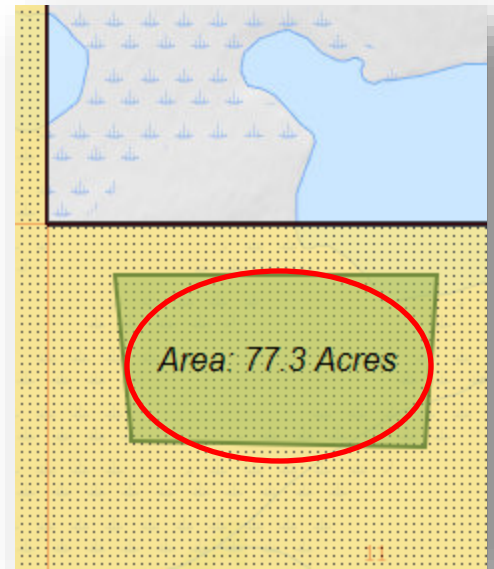



Figure 7

- f) Now you can practice printing your selections as a PDF map so you know how to do it for real once rules are published later in 2020. As a reminder, your selections will not be saved online, nor can they be submitted using this system. Prints and PDFs are date stamped, and those dated prior to rules being approved will not be valid or accepted for applications.

- g) Click the Print widget , and the Print panel will display at the right of your screen, as in *Figure 9*. The Map Title, Layout, and Format boxes are pre-filled for you.

- h) Click the “Advanced” button shown in *Figure 9* for a pop-out menu to make additional selections that ensure your map is accurately converted into a useable PDF digital file.

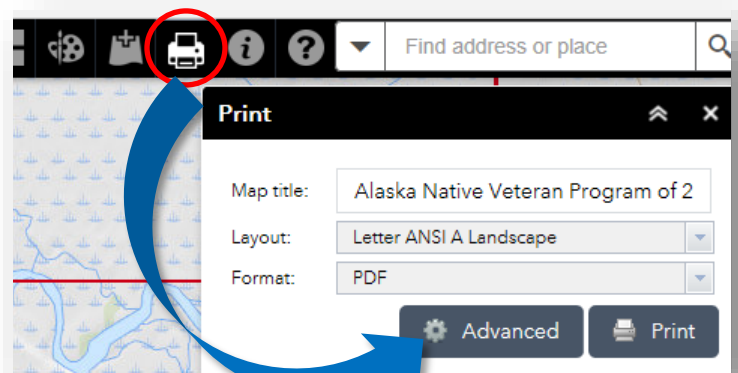


Figure 9

INSTRUCTIONS FOR USING THE ONLINE AVAILABLE LANDS MAP TOOL

i) Most items in the “Advanced” pop-out menu are completed for you by default, but you will need to modify the two items circled in *Figure 10* (right) as described below:

- Enter 50,000 in the space to the right of “Force Scale.”
- For the Author, enter the applicant’s first and last name.
- Click the print button. It may take a moment to complete printing.

j) Once your map is printed as a PDF, it will display below the “Advanced” and “Print” button, as shown in *Figure 11* below.

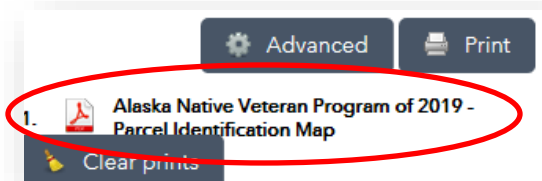
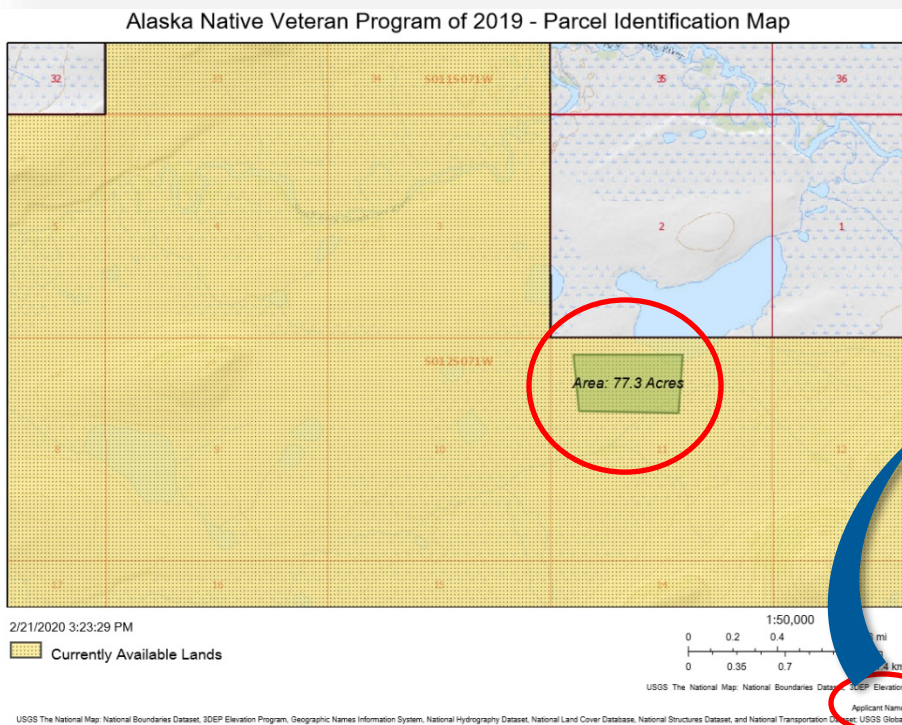
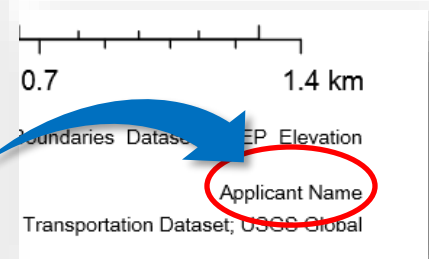


Figure 11

k) Click on the title of the map to open the PDF in a new window as depicted in *Figure 12* below. Verify the map displays the desired area and acreage, as well as the applicant’s correct name in the lower right corner

Figure 10

Figure 12



INSTRUCTIONS FOR USING THE ONLINE AVAILABLE LANDS MAP TOOL

- I) Follow the procedure you normally use for your computer and browser to print your map and/or save it digitally as a PDF.

Please remember that your selections will not be saved online, nor can they be submitted using this system. Prints and PDFs are date stamped, and those dated prior to rules being approved will not be valid or accepted with applications.

Now you are ready to accurately indicate your desired land allotment when rules are announced later in 2020. Keep experimenting, and rest assured that BLM professionals, [Bureau of Indian Affairs Realty Tribal Service Providers](#), and others will be trained and ready to assist eligible veterans make selections using this Available Lands Map once BLM eligibility notifications begin later this year.

As always, find progress updates, information, timelines, a link to the Available Lands Map tool, and answers to frequently-asked questions about the Alaska Native Vietnam era veterans land allotment section of the Dingell Act, on [BLM Alaska's exclusive web site](#) for the Alaska Native Veteran Program of 2019.

STEP 4 TRANSPARENCY ADDENDUM | Changing what is displayed

Make a layer more transparent to see lower layers by clicking the three “...” next to the main layer title (see *Figure 13* below). Click on “Transparency,” and adjust the sliding scale above it to the right to increase.

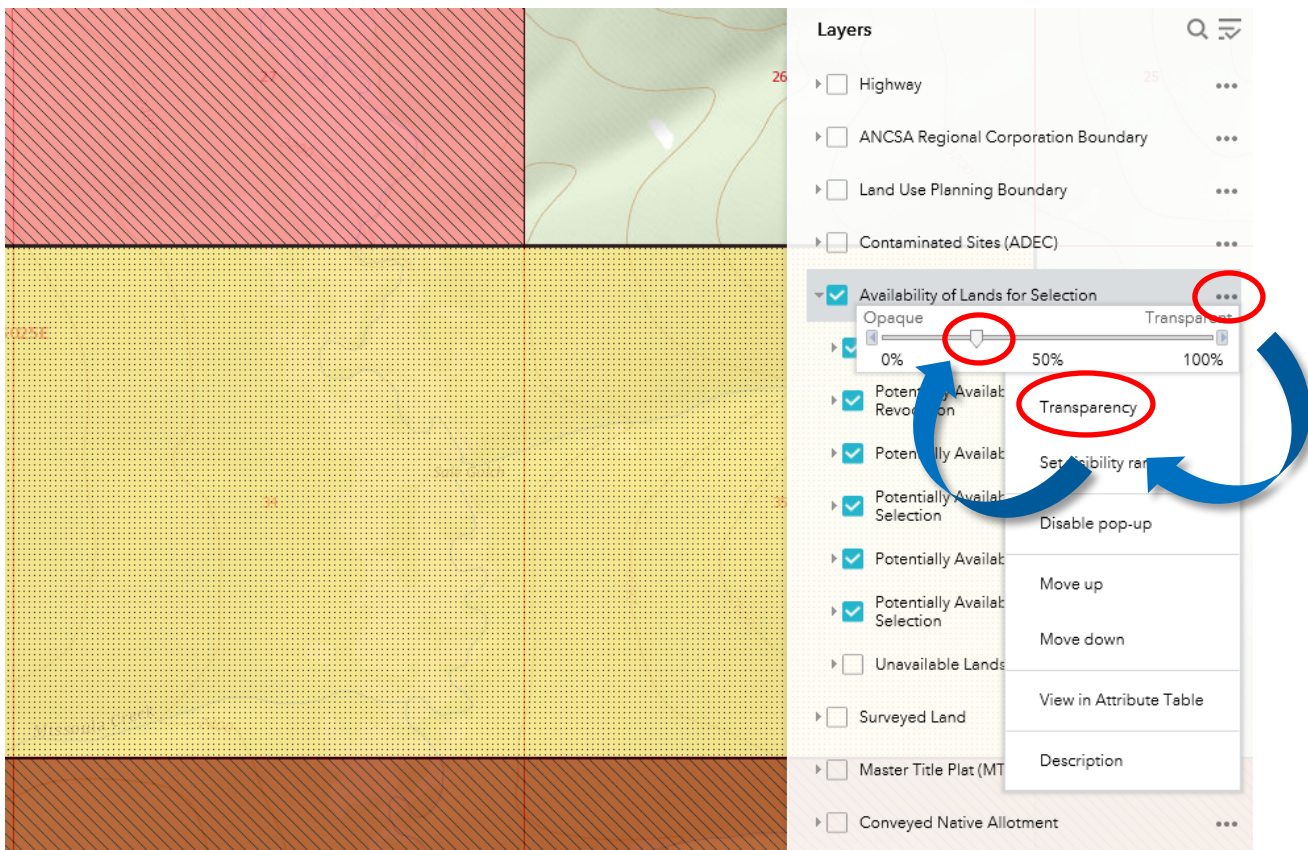


Figure 13