

RDI APPLICATION  
MANGANESE ROAD  
WASHINGTON COUNTY,  
UTAH

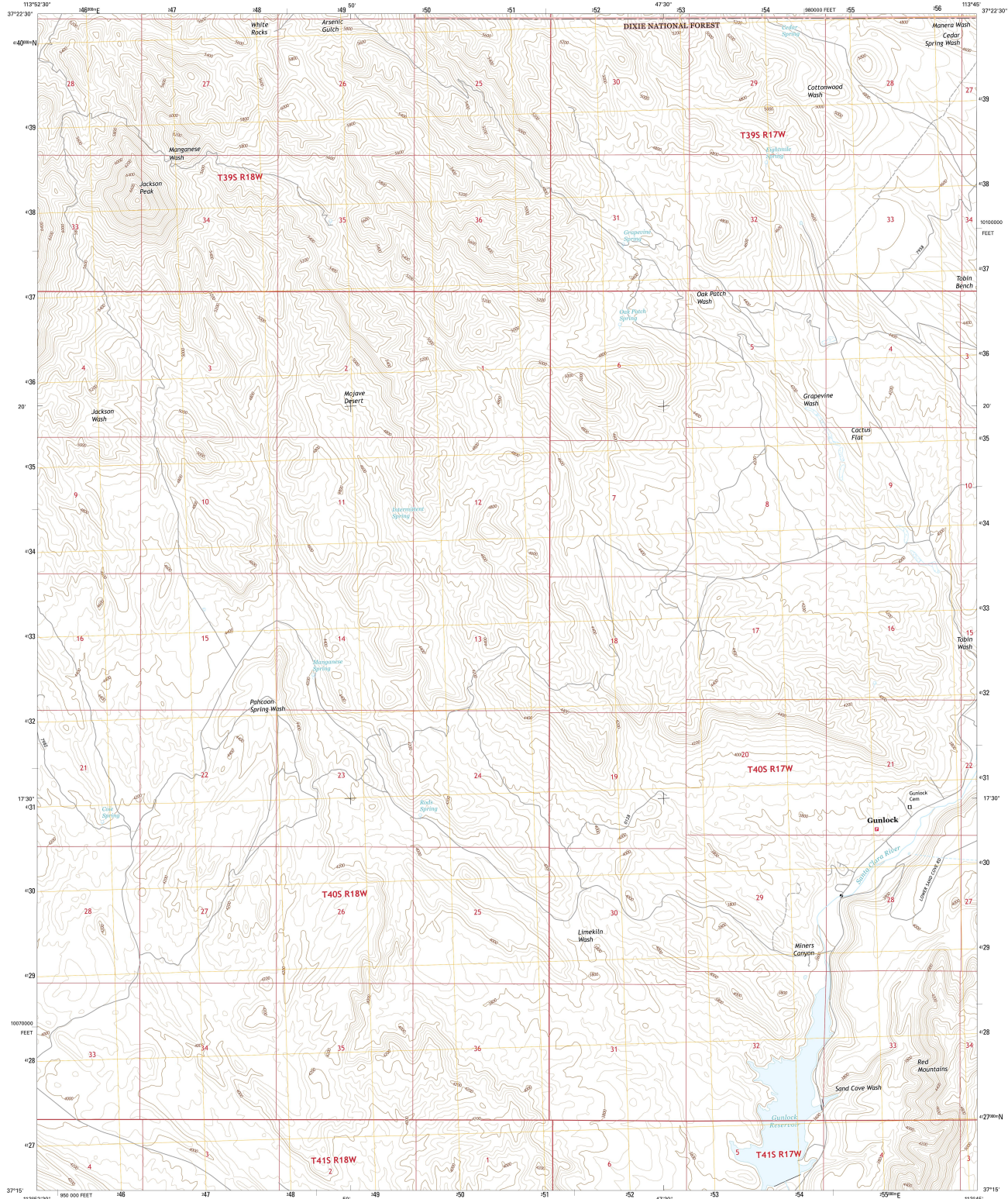
ATTACHMENT 10  
Gunlock 2017  
from USGS



U.S. DEPARTMENT OF THE INTERIOR  
U.S. GEOLOGICAL SURVEY



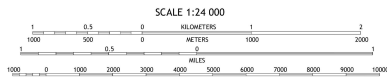
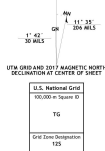
GUNLOCK QUADRANGLE  
UTAH-WASHINGTON CO.  
7.5-MINUTE SERIES



Produced by the United States Geological Survey  
North American Datum of 1983 (NAD83)  
World Geodetic System of 1984 (WGS84). Projection and  
1:24,000-foot UTM. Universal Transverse Mercator. Zone 12S  
10 000-foot UTM. Utah Coordinate System of 1983 (south zone)

This map is not a legal document. Boundaries may be  
generalized for this map scale. Private lands within government  
reservations may not be shown. Obtain permission before  
entering private lands.

Imagery: NADP, October 2014  
Roads: U.S. Census Bureau, 2015 - 2016  
Roads within U.S. Forest Service Lands: U.S. Forest Service, 2015 - 2016  
Names: National Hydrography Dataset, 2014  
Hydrography: National Hydrography Dataset, 2014  
Contours: National Elevation Dataset, 2003  
Boundaries: Geographic Names Information System, 1972 - 2016  
Public Land Survey System: BLM, 2016  
Waterbodies: National Wetlands Inventory, 1977 - 2014



CONTOUR INTERVAL: 40 FEET  
NORTH AMERICAN VERTICAL DATUM OF 1988  
This map was produced to conform with the  
National Geospatial Program US Topo Product Standard, 2011.  
A metadata file associated with this product is draft version 6.4.9



1	2	3	4
5	6	7	8

1 Goldblith  
2 Maple Ridge  
3 Central West  
4 Hedroca  
5 Hope  
6 West Mountain Peak  
7 Shively  
8 Santa Clara

ROAD CLASSIFICATION

Expressway	Local Connector
Secondary Hwy	Local Road
Ramp	4WD
Interstate Route	US Route
FS Primary Route	FS Passenger Route
	FS High Clearance Route

Check with local Forest Service unit for current travel conditions and restrictions.

GUNLOCK, UT  
2017

