

Wilderness Inventory Unit Index of Documents  
**Indian Creek OR-036-036, 9 total pages**

Page 1: Index Cover Sheet

[Page 2: Form 1 – Documentation of BLM Wilderness Inventory: Findings on Record](#)

[Page 5: Form 2 – Documentation of Current Wilderness Inventory Conditions](#)

[Page 8: Form 2 – Summary of Findings and Conclusion](#)

[Page 9: Wilderness Characteristics Overview–Indian Creek OR-036-036 Map 1](#)

**Prepared by:**  
**U.S. Department of the Interior**  
**Bureau of Land Management**  
**Vale District Office**  
**100 Oregon Street**  
**Vale, Oregon 97918**



## **H-6300-1-WILDERNESS INVENTORY MAINTENANCE IN BLM OREGON/WASHINGTON**

### **APPENDIX B – INVENTORY AREA EVALUATION**

#### **Evaluation of Current Conditions:**

- 1) Document and review the existing BLM wilderness inventory findings on file, if available, regarding the presence or absence of individual wilderness characteristics, using Form 1, below.
- 2) Consider relevant information regarding current conditions available in the office to identify and describe any changes to the existing information (use interdisciplinary (ID) team knowledge, aerial photographs, field observations, maps, etc.), and document your findings on Form 2, below.

When Citizen Information has been submitted regarding wilderness characteristics, document the submitted materials including: date of Submission; Name of District(s) and Field Office(s) Affected; Type of material Submitted (e.g. narrative, map, photo). Evaluate any submitted citizen information regarding the validity of proposed boundaries of the unit(s), the existence of roads and other boundary features, the size of the unit(s), and the presence or absence of wilderness characteristics based on relevant information available in the office (prior BLM inventories, ID team knowledge, aerial photographs, field observations, maps, etc.)

Conduct field reviews as necessary to verify information and to ascertain current conditions. Reach conclusions on current conditions including boundaries, size of areas and presence or absence of wilderness characteristics. Fully explain the basis for each conclusion on form 2, including any critical differences between BLM and citizen information.

Document your findings regarding current conditions for each inventoried area. Describe how the present conditions are similar to, or have changed from, the conditions documented in the original wilderness inventory. Document your findings on Form 2 for each inventory area. Cite to or attach data considered, including photographs, maps, GIS layers, field trip notes, project files, *etc.*

Year: 2009 Unit Number/Name: OR-036-036 — Indian Creek

**FORM 1 -- DOCUMENTATION OF BLM WILDERNESS INVENTORY  
FINDINGS ON RECORD**

**1. Is there existing BLM wilderness inventory information on all or part of this area?**

Yes X No \_\_\_\_\_ (If yes, and if more than one unit is within the area, list the names of those units.):

**A.) Inventory Source(s) -- (X) Denotes all applicable BLM Inventory files, printed maps, or published BLM Decision documents with information pertaining to this unit.**

**Wilderness Inventories**

- (X) 1978-1980 – BLM Wilderness Inventory Unit 3-155 of OR-03-12-06 Indian Creek (unpublished BLM documents in case files)
- (X) April 1979 – *Wilderness -- Proposed Initial Inventory – Roadless Areas and Islands Which Clearly Do Not have Wilderness Characteristics, Oregon and Washington*

**Wilderness Decision Documents**

- (X) August 1979 – *Wilderness Review – Initial Inventory, Final Decision on Public Lands Obviously Lacking Wilderness Characteristics and Announcement of Public Lands to be Intensively Inventoried for Wilderness Characteristics, Oregon and Washington* (green document)
- ( ) October 1979 – *Wilderness Review – Intensive Inventory - Oregon, Proposed Decision on the Intensive Wilderness Inventory of Selected Areas* (grey document)
- ( ) March 1980 – *Wilderness Review – Intensive Inventory; Final Decisions on 30 Selected Units in Southeast Oregon and Proposed Decisions on Other Intensively Inventoried Units in Oregon and Washington* (orange document)
- ( ) November 1980 - *Wilderness Inventory – Oregon and Washington, Final Intensive Inventory Decisions* (brown document)
- ( ) November 1981 *Stateline Intensive Wilderness Inventory Final Decision, Oregon, Idaho, Nevada, Utah* (tan document)

**B.) Inventory Unit Name(s)/Number(s)**

BLM 3-155 of OR-03-12-06 Indian Creek.

**C.) Map Name(s)/Number(s)**

- (X) Final Decision – Initial Wilderness Inventory Map, August 1979, Oregon
- ( ) Proposed Decision -- Intensive Wilderness Inventory of Selected Areas Map, October 1979, Oregon
- ( ) Intensive Wilderness Inventory Map, March 1980, Oregon
- ( ) Intensive Wilderness Inventory --Final Decisions Map, November 1980, Oregon
- ( ) November, 1981 *Stateline Intensive Wilderness Inventory Final Decision, Oregon, Idaho, Nevada, Utah* (tan document)

**D.) BLM District(s)/Field Office(s)**  
 Vale District/Jordan Resource Area

**2. BLM Inventory Findings on Record**

(Existing inventory information regarding wilderness characteristics (if more than one BLM inventory unit is associated with the area, list each unit and answer each question individually for each inventory unit):

**Inventory Source:** See above.

<b>Unit#/ Name</b>	<b>Size (historic acres)</b>	<b>Natural Condition? Y/N</b>	<b>Outstanding Solitude? Y/N</b>	<b>Outstanding Primitive &amp; Unconfined Recreation? Y/N</b>	<b>Supplemental Values? Y/N</b>
3-155 of OR-03-12- 06 Indian Creek	9,260	*	N	N	*
<b>TOTAL</b>	9,260				

\* -- A determination was not specifically stated during the inventory of this unit.

## **H-6300-1-WILDERNESS INVENTORY MAINTENANCE IN BLM OREGON/WASHINGTON**

### **APPENDIX B – INVENTORY AREA EVALUATION**

#### **Evaluation of Current Conditions:**

- 1) Document and review the existing BLM wilderness inventory findings on file, if available, regarding the presence or absence of individual wilderness characteristics, using Form 1, below.
- 2) Consider relevant information regarding current conditions available in the office to identify and describe any changes to the existing information (use interdisciplinary (ID) team knowledge, aerial photographs, field observations, maps, etc.), and document your findings on Form 2, below.

When Citizen Information has been submitted regarding wilderness characteristics, document the submitted materials including: date of Submission; Name of District(s) and Field Office(s) Affected; Type of material Submitted (e.g. narrative, map, photo). Evaluate any submitted citizen information regarding the validity of proposed boundaries of the unit(s), the existence of roads and other boundary features, the size of the unit(s), and the presence or absence of wilderness characteristics based on relevant information available in the office (prior BLM inventories, ID team knowledge, aerial photographs, field observations, maps, etc.)

Conduct field reviews as necessary to verify information and to ascertain current conditions. Reach conclusions on current conditions including boundaries, size of areas and presence or absence of wilderness characteristics. Fully explain the basis for each conclusion on form 2, including any critical differences between BLM and citizen information.

Document your findings regarding current conditions for each inventoried area. Describe how the present conditions are similar to, or have changed from, the conditions documented in the original wilderness inventory. Document your findings on Form 2 for each inventory area. Cite to or attach data considered, including photographs, maps, GIS layers, field trip notes, project files, *etc.*

## **FORM 2 -- DOCUMENTATION OF CURRENT WILDERNESS INVENTORY CONDITIONS**

**Unit Number/Name:** OR-036-036 — Indian Creek

**Description of Current Conditions:** [Include land ownership, location, topography, vegetation features and summary of major human uses/activities.]

**1. Is the unit of sufficient size?**

Yes   X                        No           

**Description:** Refer to the associated Map 1 of this unit for its location. The unit has 8,131 acres of public land. The unit's boundaries are the similar to the 1970's wilderness characteristics inventory with the exception of a boundary route (road) difference in the southeast area of the unit which subtracted 1,129 acres from the original inventory. The unit boundary consists of BLM roads -- BLM 6305-0-00 on its east, north, and west sides (and part of a private tract on the unit's east side), County road 572 on the western half of the south side, and a utility right-of-way (ROW) to the north of County road 572 on the eastern half of the south side. A 640 acre private inholding is also a feature of the unit's boundary. These BLM and County roads receive mechanical maintenance as needed to keep them passable on a relatively regular and continuous (seasonal) basis.

**2. Is the unit in a natural condition?**

Yes   X                        No                                 N/A           

**Description:** The terrain of the unit consists of rim rock ravines and rolling hills. Elevation ranges from 5,185 to 6,000 feet. The vegetation is sagebrush and both native and non-native grasses.

See this unit's associated Map 1 for human developments in the unit. There are 2 earthen reservoirs, 4.6 miles of rangeland fence and 5.9 miles of 8 motorized primitive trails (MPTs). There is remnant visual evidence of 0.8 miles of two segments of abandoned vehicle routes. Due to the type, extent, distribution and location of the existing human imprints, the unit, overall, appears to be primarily affected by the forces of nature with the imprint of humans being substantially unnoticeable to the average visitor.

**3. Does the unit have outstanding opportunities for solitude?**

Yes                                 No   X                        N/A           

**Description:** This unit is an irregular oval in shape approximately 3 miles across north-south and 5 miles across east-west. The unit possesses low profiled, low density vegetation. Combined with insufficient topographic relief, the unit does not provide outstanding opportunities for solitude. These findings are in agreement with the initial inventory done in the late 1970s.

**4. Does the unit have outstanding opportunities for primitive and unconfined recreation?**Yes \_\_\_\_\_ No   X   N/A \_\_\_\_\_

**Description:** Opportunities for primitive and unconfined types of recreation are available in the unit. However, existing opportunities for activities such as hiking, backpacking, hunting, wildlife viewing, horseback riding, and photography are not outstanding because the unit lacks scenic quality, diversity of landforms, challenging terrain and/or special or unique features which would draw a visitor specifically to the unit for outdoor recreational pursuits. For the reasons stated, this unit does not have outstanding opportunities for primitive and unconfined recreation.

**5. Does the unit have supplemental values?**Yes   X   No \_\_\_\_\_ N/A \_\_\_\_\_

**Description:** A significant amount of intact native rangeland, and associated sagebrush obligate species (e.g., sage grouse and pygmy rabbit) is within the unit. Three leks of sage grouse -- a BLM special status animal species -- have been recorded within the unit.

**Summary of Findings and Conclusion**

**Unit Name and Number:** OR-036-036 — Indian Creek

**Summary Results of Analysis:**

- 1. Does the area meet any of the size requirements?  Yes  No
- 2. Does the area appear to be natural?  Yes  No
- 3. Does the area offer outstanding opportunities for solitude or a primitive and unconfined type of recreation?  Yes  No  NA
- 4. Does the area have supplemental values?  Yes  No  NA

**Conclusion -- check one:**

The area, or a portion of the area, has wilderness character.

The area does not have wilderness character.

**Prepared by:** Robert Alward  
Robert Alward, Wilderness Planner, contractor

**Team Members:**

- |  |           |
|--|-----------|
| <u>Richard White</u>                           | 5/14/10   |
| Richard White, Rangeland Management Specialist | Date      |
| <u>Marcy Egger</u>                             | 5/17/10   |
| Marcy Egger, Range Management Specialist       | Date      |
| <u>Dave Draheim</u>                            | 2/10/10   |
| Dave Draheim, Outdoor Recreation Planner       | Date      |
| <u>Garth Ross</u>                              | 5/13/2010 |
| Garth Ross, Wildlife Biologist                 | Date      |
| <u>Jack Wenderoth</u>                          | 5/17/10   |
| Jack Wenderoth, Planning Contractor            | Date      |
| <u>Jon Sadowski</u>                            | 4-28-2010 |
| Jon Sadowski, Environmental Contractor         | Date      |
| <u>Eian Ray</u>                                | 5-14-10   |
| Eian Ray, GIS Specialist, contractor           | Date      |
| <u>Brent Grasty</u>                            | 5/18/10   |
| Brent Grasty, GIS Coordinator                  | Date      |

**Approved by:**

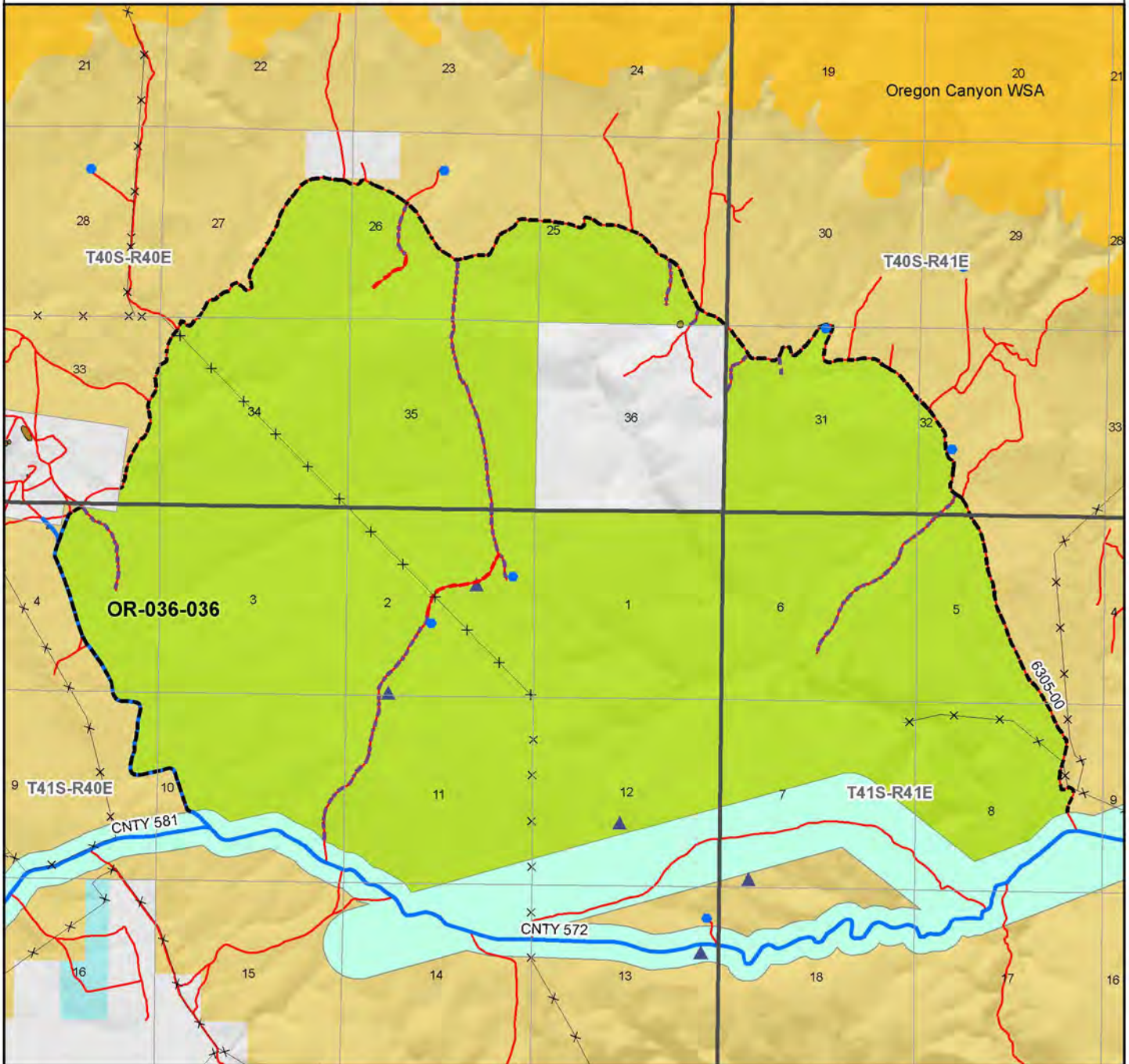
Carolyn R. Freeborn 7/19/2010  
Carolyn Freeborn, Jordan Resource Area Field Manager Date

*This form documents information that constitutes an inventory finding on wilderness characteristics. It does not represent a formal land use allocation or a final agency decision subject to administrative remedies under either 43 CFR parts 4 or 1610.5-2.*



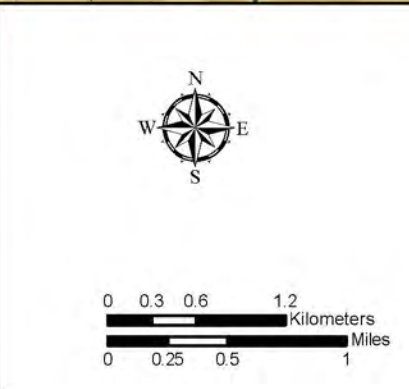
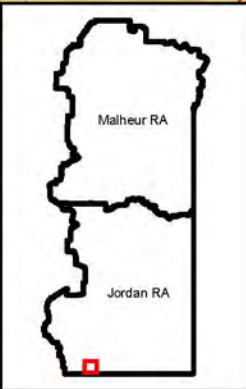
# Wilderness Characteristics - Overview

## Indian Creek - OR-036-036 - Map 1 of 1



**Legend**

Developed Spring	<b>Route Types - BLM Determination</b>
Wildlife Guzzler	Boundary Road
Earthen Reservoir	Motorized Primitive Trail (MPT)
Pipeline	Discontinued Use
Trough	<b>Routes - Outside Wild Char Unit</b>
Fence	County
Storage Tank	Major Highway
Surface Mining Disturbance	BLM Numbered & Other Routes
Sage Grouse Lek	<b>Land Ownership</b>
Special Status Plant	Bureau of Land Management
BLM Wild Char Inventory Unit	State
Wilderness Study Area	Private
Mineral Material Site	Other Federal Land
Road/Utility Right-of-Way	
Major Water Body	



**U.S. DEPARTMENT OF THE INTERIOR**  
BUREAU OF LAND MANAGEMENT



**VALE DISTRICT**  
August 7, 2009

No warranty is made by the Bureau of Land Management as to the accuracy, reliability, or completeness of these data for individual or aggregate use with other data. Original data were compiled from various sources. This information may not meet National Map Accuracy Standards. This product was developed through digital means and may be updated without notification.

--FINAL--