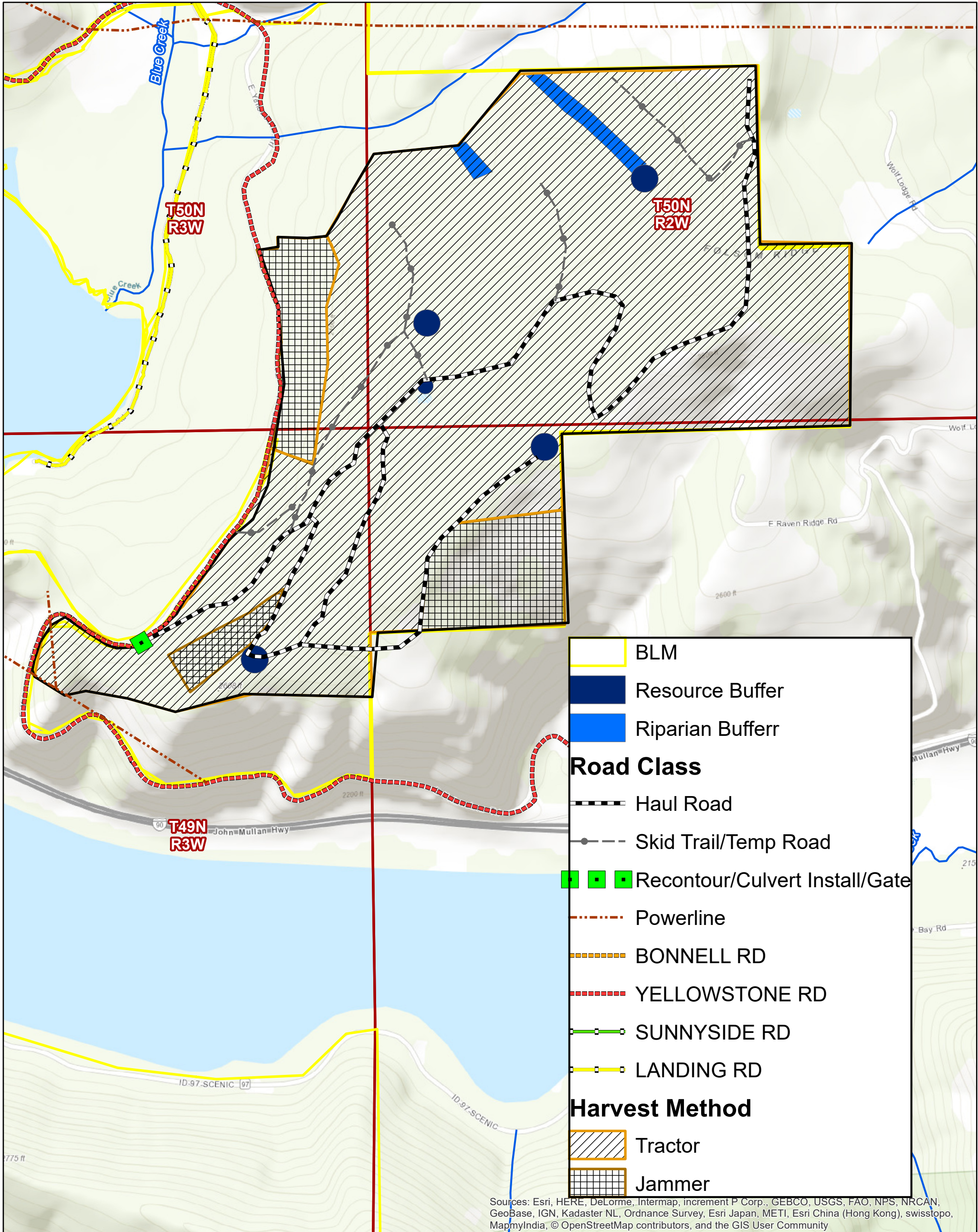


Blue Creek East Timber Sale IDC010-TS-2020.0001

T49N, R2W, sec. 6; T49N, R3W, sec. 1; T50N, R2W, sec.31; T50N, R3W, sec. 35, BM
Exhibit A Sale Map

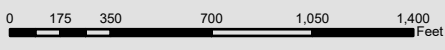


Sources: Esri, HERE, DeLorme, Intermap, increment P Corp., GEBCO, USGS, FAO, NPS, NRCAN, GeoBase, IGN, Kadaster NL, Ordnance Survey, Esri Japan, METI, Esri China (Hong Kong), swisstopo, MapmyIndia, © OpenStreetMap contributors, and the GIS User Community



The surface management status ("land ownership") should be used as a general guide only. Official land records, located at the Bureau of Land Management (BLM) and other offices, should be checked for up-to-date information concerning any specific tract of land.

1:8,000



Data displayed in UTM Zone 11N, NAD83



Map Created: 08/10/20

No warranty is made by the Bureau of Land Management. The accuracy, reliability, or completeness of these data for individual use or aggregate use with other data is not guaranteed. The following cannot be made Section 508 compliant. For help with its data or information, please contact the BLM Idaho State Office Webmaster at 208-373-4000.