

Wilderness Inventory Unit Index of Documents
Hope Butte OR-034-085, 10 total pages

Page 1: Index Cover Sheet

[Page 2: Form 1 – Documentation of BLM Wilderness Inventory: Findings on Record](#)

[Page 5: Form 2 – Documentation of Current Wilderness Inventory Conditions](#)

[Page 8: Form 2 – Summary of Findings and Conclusion](#)

[Page 9: Wilderness Characteristics Overview – Hope Butte OR-034-085 Map 1 of 2](#)

[Page 10: Wilderness Characteristics-Land Treatments-Hope Butte OR-034-085 Map 2 of 2](#)

Prepared by:
U.S. Department of the Interior
Bureau of Land Management
Vale District Office
100 Oregon Street
Vale, Oregon 97918



H-6300-1-WILDERNESS INVENTORY MAINTENANCE IN BLM OREGON/WASHINGTON

APPENDIX B – INVENTORY AREA EVALUATION

Evaluation of Current Conditions:

- 1) Document and review the existing BLM wilderness inventory findings on file, if available, regarding the presence or absence of individual wilderness characteristics, using Form 1, below.
- 2) Consider relevant information regarding current conditions available in the office to identify and describe any changes to the existing information (use interdisciplinary (ID) team knowledge, aerial photographs, field observations, maps, etc.), and document your findings on Form 2, below.

When Citizen Information has been submitted regarding wilderness characteristics, document the submitted materials including: date of Submission; Name of District(s) and Field Office(s) Affected; Type of material Submitted (e.g. narrative, map, photo). Evaluate any submitted citizen information regarding the validity of proposed boundaries of the unit(s), the existence of roads and other boundary features, the size of the unit(s), and the presence or absence of wilderness characteristics based on relevant information available in the office (prior BLM inventories, ID team knowledge, aerial photographs, field observations, maps, etc.)

Conduct field reviews as necessary to verify information and to ascertain current conditions. Reach conclusions on current conditions including boundaries, size of areas and presence or absence of wilderness characteristics. Fully explain the basis for each conclusion on form 2, including any critical differences between BLM and citizen information.

Document your findings regarding current conditions for each inventoried area. Describe how the present conditions are similar to, or have changed from, the conditions documented in the original wilderness inventory. Document your findings on Form 2 for each inventory area. Cite to or attach data considered, including photographs, maps, GIS layers, field trip notes, project files, *etc.*

Year: 2009 **Unit Number/Name:** OR-034-085 -- Hope Butte

**FORM 1 -- DOCUMENTATION OF BLM WILDERNESS INVENTORY
FINDINGS ON RECORD**

1. Is there existing BLM wilderness inventory information on all or part of this area?

Yes No (If yes, and if more than one unit is within the area, list the names of those units.):

A.) Inventory Source(s) -- (X) Denotes all applicable BLM Inventory files, printed maps, or published BLM Decision documents with information pertaining to this unit.

Wilderness Inventories

- (X) 1978 – BLM Wilderness Inventory Units 3-01 Hope Butte of OR-03-01-22 (unpublished BLM documents stored in 6-way case files)
- (X) April 1979 – *Wilderness -- Proposed Initial Inventory – Roadless Areas and Islands Which Clearly Do Not have Wilderness Characteristics, Oregon and Washington*

Wilderness Decision Documents

- (X) August 1979 – *Wilderness Review – Initial Inventory, Final Decision on Public Lands Obviously Lacking Wilderness Characteristics and Announcement of Public Lands to be Intensively Inventoried for Wilderness Characteristics, Oregon and Washington* (green document)
- () October 1979 – *Wilderness Review – Intensive Inventory - Oregon, Proposed Decision on the Intensive Wilderness Inventory of Selected Areas* (grey document).
- () March 1980 – *Wilderness Review – Intensive Inventory; Final Decisions on 30 Selected Units in Southeast Oregon and Proposed Decisions on Other Intensively Inventoried Units in Oregon and Washington* (orange document)
- () November 1980 - *Wilderness Inventory – Oregon and Washington, Final Intensive Inventory Decisions* (brown document)
- () November 1981 *Stateline Intensive Wilderness Inventory Final Decision, Oregon, Idaho, Nevada, Utah* (tan document).

B.) Inventory Unit Name(s)/Number(s)

BLM 3-01 Hope Butte of OR-03-01-22

C.) Map Name(s)/Number(s)

- Final Decision – Initial Wilderness Inventory Map, August 1979, Oregon
- Proposed Decision -- Intensive Wilderness Inventory of Selected Areas Map, October 1979, Oregon
- Intensive Wilderness Inventory Map, March 1980, Oregon
- Intensive Wilderness Inventory --Final Decisions Map, November 1980, Oregon.
- November, 1981 *Stateline Intensive Wilderness Inventory Final Decision, Oregon, Idaho, Nevada, Utah* (tan document).

D.) BLM District(s)/Field Office(s)

Vale District Office/ Malheur Field Office

2. BLM Inventory Findings on Record

(Existing inventory information regarding wilderness characteristics (if more than one BLM inventory unit is associated with the area, list each unit and answer each question individually for each inventory unit):

Inventory Source: See above.

Unit#/ Name	Size (historic acres)	Natural Condition? Y/N	Outstanding Solitude? Y/N	Outstanding Primitive & Unconfined Recreation? Y/N	Supplemental Values? Y/N
3-01 Hope Butte OR-03-01-22	5,740	N	*	*	*
TOTAL	5,740				

*-- These criteria were not specifically addressed in the inventory of this unit.

H-6300-1-WILDERNESS INVENTORY MAINTENANCE IN BLM OREGON/WASHINGTON

APPENDIX B – INVENTORY AREA EVALUATION

Evaluation of Current Conditions:

- 1) Document and review the existing BLM wilderness inventory findings on file, if available, regarding the presence or absence of individual wilderness characteristics, using Form 1, below.
- 2) Consider relevant information regarding current conditions available in the office to identify and describe any changes to the existing information (use interdisciplinary (ID) team knowledge, aerial photographs, field observations, maps, etc.), and document your findings on Form 2, below.

When Citizen Information has been submitted regarding wilderness characteristics, document the submitted materials including: date of Submission; Name of District(s) and Field Office(s) Affected; Type of material Submitted (e.g. narrative, map, photo). Evaluate any submitted citizen information regarding the validity of proposed boundaries of the unit(s), the existence of roads and other boundary features, the size of the unit(s), and the presence or absence of wilderness characteristics based on relevant information available in the office (prior BLM inventories, ID team knowledge, aerial photographs, field observations, maps, etc.)

Conduct field reviews as necessary to verify information and to ascertain current conditions. Reach conclusions on current conditions including boundaries, size of areas and presence or absence of wilderness characteristics. Fully explain the basis for each conclusion on form 2, including any critical differences between BLM and citizen information.

Document your findings regarding current conditions for each inventoried area. Describe how the present conditions are similar to, or have changed from, the conditions documented in the original wilderness inventory. Document your findings on Form 2 for each inventory area. Cite to or attach data considered, including photographs, maps, GIS layers, field trip notes, project files, *etc.*

FORM 2 -- DOCUMENTATION OF CURRENT WILDERNESS INVENTORY CONDITIONS

Unit Number/Name – OR-034-085 — Hope Butte

Description of Current Conditions: [Include land ownership, location, topography, vegetation features and summary of major human uses/activities.]

1. Is the unit of sufficient size?

Yes X No

Description: Refer to this inventory unit's associated Map 1 for its location. The size of the unit is 6,853 acres. The unit is larger than the late 1970's unit (3-1), primarily due to a route changing status from what then was determined to be a road to what now is a motorized primitive trail (MPT) due to the lack of mechanical maintenance and no regular and continuous use. Boundaries consist of abutting private and federal Bureau of Reclamation land parcels, BLM roads 7361-00 and 7363-00, a BLM-designated mineral materials site, and one other road traversing public land.

2. Is the unit in a natural condition?

Yes No X N/A

Description: The unit consists primarily of two unnamed minor drainage systems which flow southward toward Bully Creek or Bully Creek Reservoir. Terrain between the primarily drainage bottoms is generally low profiled rolling hills and ridges. The exception is the elevated Hope Butte feature in the unit's northeast sector, and the lesser Sugarloaf Butte in section 30. Elevations range from 2,580 to 3,740 feet of Hope Butte. Vegetation is predominately native and non-native grasses and sagebrush.

Refer to the unit's associated Map 1 and Map 2 for human imprints within the unit. There is 3.4 miles of rangeland fence, 19.9 miles of 30 MPTs, 5.2 miles of 2 abandoned irrigation canal systems, 2.6 miles of buried pipeline with 3 associated water troughs, 4 developed springs, 3 earthen reservoirs, and several (now abandoned) mechanically developed pits, trenches and dig sites associated with locatable mineral exploration activities on and surrounding Hope Butte. There remains no visual contrast to the average visitor of the 1965 through 1983 disc-drilled seedings of non-native grasses and unknown species. Some visual evidence remains of portions of a 2003 brush beating and disc-drilled seeding of unknown species applied on all public land of sections 4 and 5 within the unit (1,120 acres). Relative to the unit's size and configuration, the combination of the multiple types, extent and expansive distribution of the human developments causes a degree of fracturing within the unit to an extent that precludes the area from appearing to be affected primarily by the forces of nature with the imprint of humans being substantially unnoticeable to the average visitor. The appearance of unnaturalness is accented by the extensive surface mining disturbances associated with Hope Butte, the extensive presence of the two abandoned (though still notably visually

surface-scaring) canals, and the 2 major MPTs which traverse the entire unit through the unit's central core.

3. Does the unit have outstanding opportunities for solitude?

Yes _____ No X N/A _____

Description: The type and associated low height of the unit's dominate vegetation does not provide adequate screening between visitors to have outstanding opportunities for solitude. The longest continuous length of public lands within the unit is about 4.5 miles; the longest width is about 4 miles. However, within the western third of the unit is an extensive intruding private parcel that constitutes a portion of the unit's south boundary, causing the western-most area of the unit to be virtually severed from the main body of the unit. The remainder of the unit -- due to a combination of its predominately low profile topography and the disruptive presence of the two through MPTs -- does not possess sufficient core area to provide outstanding opportunities for solitude. In summary, features of the unit -- individually or in combination -- do not provide outstanding opportunities for solitude.

4. Does the unit have outstanding opportunities for primitive and unconfined recreation?

Yes _____ No X N/A _____

Description: The dominate activity is hunting of common game species (deer, chukar). Opportunities for hiking, and equestrian activities are also available. Individually or in combination, with the lack of unique, unusual or special features to draw visitors to the unit, these activities do not provide outstanding opportunities for primitive and unconfined recreation.

5. Does the unit have supplemental values?

Yes X No _____ N/A _____

Description: Oregon princesplume, a BLM special status plant species, has been documented at three sites within the unit.

Summary of Findings and Conclusion

Unit Name and Number: OR-034-085 — Hope Butte

Summary Results of Analysis:

- 1. Does the area meet any of the size requirements? Yes No
- 2. Does the area appear to be natural? Yes No
- 3. Does the area offer outstanding opportunities for solitude or a primitive and unconfined type of recreation? Yes No NA
- 4. Does the area have supplemental values? Yes No NA


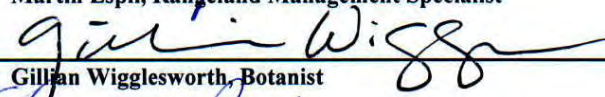
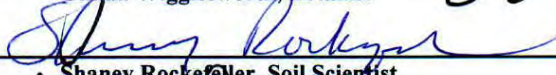

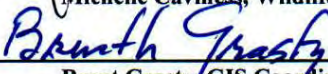
Conclusion -- check one:

The area, or a portion of the area, has wilderness character.

The area does not have wilderness character.

Prepared by: 
Robert Alward, Wilderness Planner contractor

Team Members:

<u></u>	<u>7/22/09</u>
Martin Espil, Rangeland Management Specialist	Date
<u></u>	<u>7/21/09</u>
Gillian Wigglesworth, Botanist	Date
<u></u>	<u>7/24/09</u>
Shaney Rockefeller, Soil Scientist	Date
<u></u>	<u>7/22/09</u>
Michelle Caviness, Wildlife Biologist	Date
<u></u>	<u>7/23/09</u>
Brent Grasty, GIS Coordinator	Date

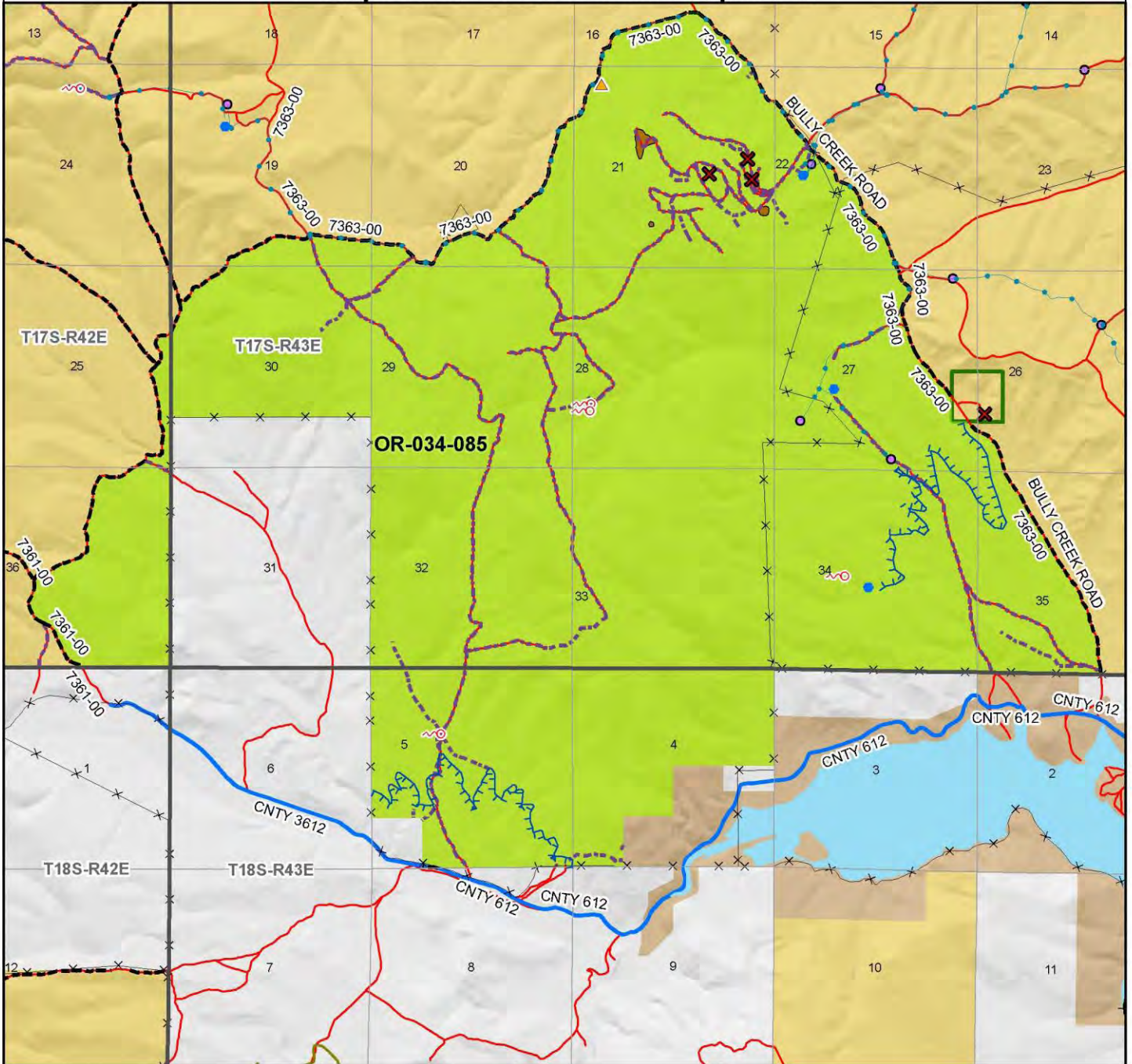
Approved by:

 8/4/09
Pat Ryan, Malheur Resource Area Field Manager Date

This form documents information that constitutes an inventory finding on wilderness characteristics. It does not represent a formal land use allocation or a final agency decision subject to administrative remedies under either 43 CFR parts 4 or 1610.5-2.

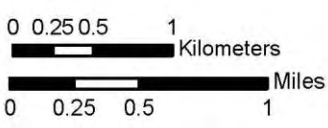
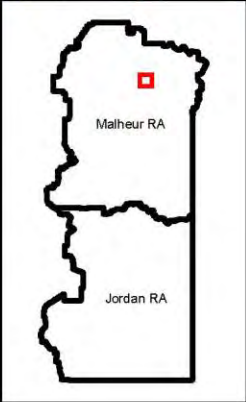
Wilderness Characteristics - Overview

Hope Butte - OR-034-085 - Map 1 of 2



Legend

- | | |
|---|--|
| <ul style="list-style-type: none"> Developed Spring Wildlife Guzzler Earthen Reservoir Pipeline Trough Fence Storage Tank Surface Mining Disturbance Sage Grouse Lek Special Status Plant BLM Wild Char Inventory Unit Wilderness Study Area Mineral Material Site Road/Utility Right-of-Way Major Water Body Abandoned Canal | <p>Route Types - BLM Determination</p> <ul style="list-style-type: none"> Boundary Road Motorized Primitive Trail (MPT) Discontinued Use <p>Routes - Outside Wild Char Unit</p> <ul style="list-style-type: none"> County Major Highway BLM Numbered & Other Routes <p>Land Ownership</p> <ul style="list-style-type: none"> Bureau of Land Management State Private Other Federal Land |
|---|--|



U.S. DEPARTMENT OF THE INTERIOR
BUREAU OF LAND MANAGEMENT

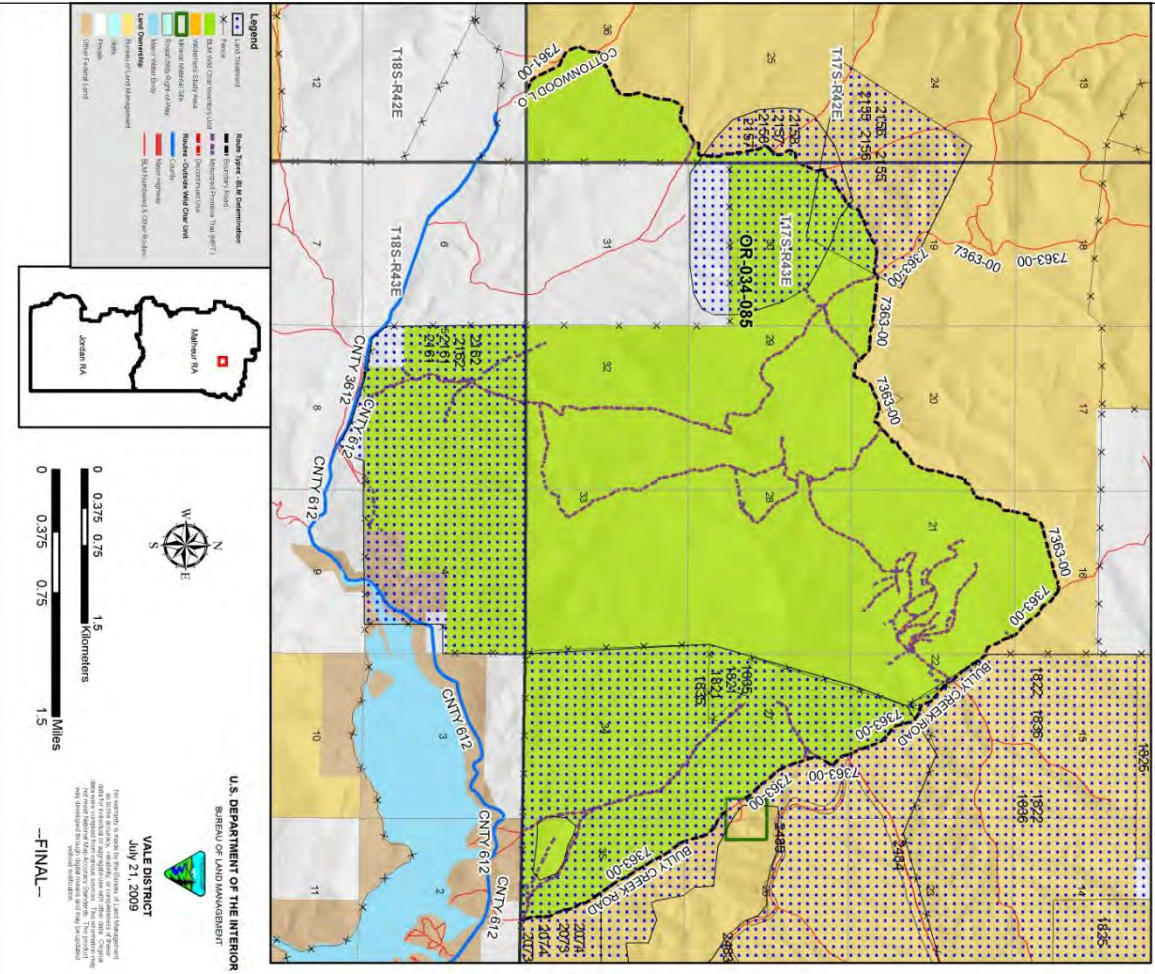


VALE DISTRICT
July 21, 2009

No warranty is made by the Bureau of Land Management as to the accuracy, reliability, or completeness of these data for individual or aggregate use with other data. Original data were compiled from various sources. This information may not meet National Map Accuracy Standards. This product was developed through digital means and may be updated without notification.

--FINAL--

Wilderness Characteristics - Land Treatments
Hope Butte - OR-034-085 - Map 2 of 2



Wilderness Characteristics - Land Treatments
Hope Butte - OR-034-085 - Map 2 of 2

OBJECTID*	NAME	TREATMENT TYPE	SEED GROUP	DATE
1821	HOPE BUTTE SEEDING	Plow/Disc	Not Applicable	1965
1822	HOPE BUTTE SEEDING	Plow/Disc	Not Applicable	1966
1836	HOPE BUTTE SEEDING	Drill Seeding	Unknown	1965
2073	RED ROCKS SEEDING	Drill Seeding	Non-native Grasses	1966
2155	WEST WILLOW CREEK CONTROL BURN	Plow/Disc	Not Applicable	1983
2156	WEST WILLOW CREEK CONTROL BURN	Drill Seeding	Not Applicable	1983
2157	ROCK CABIN CREEK BURNING	Prescribed Burn	Not Applicable	1983
2158	ROCK CABIN CREEK BURNING	Drill Seeding	Non-native Grasses	1983
2161	ALLOTMENT 2 BRUSH BEATING	Brushbeat	Not Applicable	2003
2162	ALLOTMENT 2 BRUSH BEATING	Drill Seeding	Unknown	2003

Note: The Land Treatments represented by navy blue dots on the map to the left are labeled with the treatments' ObjectIDs listed in the first field of the Land Treatments table shown above. Multiple types of treatments may have been applied to the same area. For example, one treatment area may have been plowed and drill seeded - a record is shown in the table for each type of treatment.