

Wilderness Inventory Unit Index of Documents
Homestead Contiguous OR-035-019, 15 total pages

Page 1: Index Cover Sheet

[Page 2: Form 1 – Documentation of BLM Wilderness Inventory: Findings on Record](#)

[Page 5: Form 2 – Documentation of Current Wilderness Inventory Conditions](#)

[Page 10: Form 2 – Summary of Findings and Conclusion](#)

[Page 11: Wilderness Characteristics Overview–Homestead Contiguous OR-035-019 Map 1 of 2](#)

[Page 12: Wilderness Characteristics-Land Treatments-Homestead Contiguous OR-035-019 Map 2 of 2](#)

[Page 13: OR-035-019 Homestead Contiguous BLM Photos](#)

Prepared by:
U.S. Department of the Interior
Bureau of Land Management
Vale District Office
100 Oregon Street
Vale, Oregon 97918



H-6300-1-WILDERNESS INVENTORY MAINTENANCE IN BLM OREGON/WASHINGTON

APPENDIX B – INVENTORY AREA EVALUATION

Evaluation of Current Conditions:

- 1) Document and review the existing BLM wilderness inventory findings on file, if available, regarding the presence or absence of individual wilderness characteristics, using Form 1, below.
- 2) Consider relevant information regarding current conditions available in the office to identify and describe any changes to the existing information (use interdisciplinary (ID) team knowledge, aerial photographs, field observations, maps, etc.), and document your findings on Form 2, below.

When Citizen Information has been submitted regarding wilderness characteristics, document the submitted materials including: date of Submission; Name of District(s) and Field Office(s) Affected; Type of material Submitted (e.g. narrative, map, photo). Evaluate any submitted citizen information regarding the validity of proposed boundaries of the unit(s), the existence of roads and other boundary features, the size of the unit(s), and the presence or absence of wilderness characteristics based on relevant information available in the office (prior BLM inventories, ID team knowledge, aerial photographs, field observations, maps, etc.)

Conduct field reviews as necessary to verify information and to ascertain current conditions. Reach conclusions on current conditions including boundaries, size of areas and presence or absence of wilderness characteristics. Fully explain the basis for each conclusion on form 2, including any critical differences between BLM and citizen information.

Document your findings regarding current conditions for each inventoried area. Describe how the present conditions are similar to, or have changed from, the conditions documented in the original wilderness inventory. Document your findings on Form 2 for each inventory area. Cite to or attach data considered, including photographs, maps, GIS layers, field trip notes, project files, *etc.*

Year: 2010 **Unit Number/Name:** OR-035-019 – Homestead Contiguous

**FORM 1 -- DOCUMENTATION OF BLM WILDERNESS INVENTORY
FINDINGS ON RECORD**

1. Is there existing BLM wilderness inventory information on all or part of this area?

(If yes, and if more than one unit is within the area, list the names of those units.):

Yes X No

A.) Inventory Source(s) -- (X) Denotes all applicable BLM Inventory files, printed maps, or published BLM Decision documents with information pertaining to this unit.

Wilderness Inventories

- () 1978 – BLM Wilderness Inventory
- (X) April 1979 – *Wilderness -- Proposed Initial Inventory – Roadless Areas and Islands Which Clearly Do Not have Wilderness Characteristics, Oregon and Washington*

Wilderness Decision Documents

- (X) August 1979 – *Wilderness Review – Initial Inventory, Final Decision on Public Lands Obviously Lacking Wilderness Characteristics and Announcement of Public Lands to be Intensively Inventoried for Wilderness Characteristics, Oregon and Washington* (green document)
- () October 1979 – *Wilderness Review – Intensive Inventory - Oregon, Proposed Decision on the Intensive Wilderness Inventory of Selected Areas* (grey document).
- (X) March 1980 – *Wilderness Review – Intensive Inventory; Final Decisions on 30 Selected Units in Southeast Oregon and Proposed Decisions on Other Intensively Inventoried Units in Oregon and Washington* (orange document)
- (X) November 1980 - *Wilderness Inventory – Oregon and Washington, Final Intensive Inventory Decisions* (brown document)
- () November 1981 *Stateline Intensive Wilderness Inventory Final Decision, Oregon, Idaho, Nevada, Utah* (tan document).

B.) Inventory Unit Name(s)/Number(s)
BLM Sheep Mountain OR-6-3

C.) Map Name(s)/Number(s)

- Final Decision – Initial Wilderness Inventory Map, August 1979, Oregon
- Proposed Decision -- Intensive Wilderness Inventory of Selected Areas Map, October 1979, Oregon
- Intensive Wilderness Inventory Map, March 1980, Oregon
- Intensive Wilderness Inventory --Final Decisions Map, November 1980, Oregon
- November, 1981 *Stateline Intensive Wilderness Inventory Final Decision, Oregon, Idaho, Nevada, Utah* (tan document).

D.) BLM District(s)/Field Office(s)

Vale District Baker Field Office

2. BLM Inventory Findings on Record

(Existing inventory information regarding wilderness characteristics (if more than one BLM inventory unit is associated with the area, list each unit and answer each question individually for each inventory unit):

Inventory Source: See above.

Unit#/ Name	Size (historic acres)	Natural Condition? Y/N	Outstanding Solitude? Y/N	Outstanding Primitive & Unconfined Recreation? Y/N	Supplemental Values? Y/N
Contiguous parcels dropped in 1980 Final Inventory	1,100 acres	N	*	*	*
Homestead OR-6-3 final acreage	7,654 USFS acres 7,001 BLM acres	Y	N	Y	Y
TOTAL	14,655				

* -- These criteria were not addressed during the inventory of these units since **natural condition** criterion was not met.

H-6300-1-WILDERNESS INVENTORY MAINTENANCE IN BLM OREGON/WASHINGTON

APPENDIX B – INVENTORY AREA EVALUATION

Evaluation of Current Conditions:

- 1) Document and review the existing BLM wilderness inventory findings on file, if available, regarding the presence or absence of individual wilderness characteristics, using Form 1, below.
- 2) Consider relevant information regarding current conditions available in the office to identify and describe any changes to the existing information (use interdisciplinary (ID) team knowledge, aerial photographs, field observations, maps, etc.), and document your findings on Form 2, below.

When Citizen Information has been submitted regarding wilderness characteristics, document the submitted materials including: date of Submission; Name of District(s) and Field Office(s) Affected; Type of material Submitted (e.g. narrative, map, and photos). Evaluate any submitted citizen information regarding the validity of proposed boundaries of the unit(s), the existence of roads and other boundary features, the size of the unit(s), and the presence or absence of wilderness characteristics based on relevant information available in the office (prior BLM inventories, ID team knowledge, aerial photographs, field observations, maps, etc.)

Conduct field reviews as necessary to verify information and to ascertain current conditions. Reach conclusions on current conditions including boundaries, size of areas and presence or absence of wilderness characteristics. Fully explain the basis for each conclusion on form 2, including any critical differences between BLM and citizen information.

Document your findings regarding current conditions for each inventoried area. Describe how the present conditions are similar to, or have changed from, the conditions documented in the original wilderness inventory. Document your findings on Form 2 for each inventory area. Cite to or attach data considered, including photographs, maps, GIS layers, field trip notes, project files, *etc.*

FORM 2 -- DOCUMENTATION OF CURRENT WILDERNESS INVENTORY CONDITIONS

Unit Number/Name: OR-035-019 – Homestead Contiguous

Description of Current Conditions: [Include land ownership, location, topography, vegetation features and summary of major human uses/activities.]

1. Is the unit of sufficient size?

Yes X No

Description: Refer to this inventory unit's associated Map 1 for its location. The 2,330 acre unit is adjacent to OR-6-2 (Homestead WSA) and contiguous with the existing WSA boundary. The unit consists of seven parcels, each of them contiguous with the WSA. For this inventory maintenance, the parcels are referenced as the northwest parcel (13 acres) north parcel 2,026 acres), and the eastern parcels as follows beginning from the north and proceeding south in order (81 acres, 31 acres, 106 acres, 31 acres, and 40 acres). The boundaries with the WSA are contiguous predominately due to a WSAs prior boundary being a legal description or by being either: (a) a contour elevation, (b) drainage or ridgeline, which most closely followed topography. For this wilderness characteristic inventory maintenance, because each parcel is contiguous to the WSA, each parcel of this inventory unit -- regardless of its size, meets size criteria.

Boundaries of the unit's parcels, in addition to private lands, include the power transmission line right-of-way (ROW) to the east, power transmission line ROW and BLM road #7649-0-00 (Hess Road) to the north, and BLM road # 7649-0-0B0 to the northwest which creates the perimeter of the northwest and northern unit. The remaining 5 smaller units to the south of the larger northern unit are bordered to the east by the ROW power transmission line and then by private lands. Boundary roads of the unit receive mechanical maintenance as needed to keep them passable on a relatively regular and continuous basis.

2. Is the unit in a natural condition?

Yes X No X

Description: The inventory unit's north parcel is eastward-facing and dominated by very steep gradient slopes, moderately sloped to rugged ridge tops, cut by multiple drainages flowing toward the unit's east ROW boundary. The unit's east and south parcel areas are dominated by very steep to natural repose gradients with very steep terrain that originates at the eastern WSA boundary and drops continually and significantly to the east until meeting the ROW boundary. All contiguous parcels to the WSA boundary are dominated by steep easterly sloping terrain with many draws and drainages extending to

their boundary features. The parcel areas of the unit range in elevation from 1,975 at the eastern boundary to 5,179 feet at the northwest boundary. The dominate vegetation in each parcel of the unit is sagebrush and both native and nonnative grasses with the north parcel containing stringers and pockets of coniferous forest stands, primarily in the higher elevations to the west and northwest. Some scattered juniper occurs in isolated areas of the unit.

See this unit's associated Map 1 and Map 2 for locations of human imprints associated with the parcel areas of this inventory unit. The majority of the acreage associated with the large northern parcel is included within the BLMs Homestead Area of Critical Environmental Concern (ACEC). Important and relevant values of the ACEC are to protect scenic qualities, and maintain or improve wildlife, bald eagle winter, and sensitive plant habitats.

The north parcel has had direct human impacts within its perimeter in the form of historical logging practices, cut stumps and skid road construction and aerial grass seeding including straw or wood mulch in the past for emergency stabilization after fire events. The northern parcel also has 3 MPTs totaling 2.5 miles existing primarily in the central section of the unit. These MPTs are a result of historic skid trails from logging activities that have been softened over time by lack of use. These impacts, although noticeable, are localized to a small area and have no apparent visual contrast associated with them and therefore do not significantly detract from naturalness of the area as a whole.

The southern and east parcel areas are unaffected by human imprints within the parcels directly, but are significantly affected by the imprints directly adjacent to them. There remains no visual contrast in the vegetation of the area to the average visitor. Although the acreage of the 5 smaller parcel areas as a whole, appear to be affected primarily by the forces of nature, the imprint of humans outside of and very close to the Eastern parcels is substantially noticeable and unavoidable to the average visitor. The imprints from humans that were identified in the 1980 Final review in the area of Oxbow, Homestead and Irondyke still exist and have in fact increased in there direct effect on the naturalness of these smaller parcels. Presently, the 350kv ROW eastern boundary feature is a grey steel, lattice design and ranges in height from approximately 80 feet to over 100 feet. This feature is immediately adjacent to parcel boundaries, unavoidable, and dominates the visitor experience of these 5 parcels. Additionally, the eastern parcels are heavily impacted by Oxbow Reservoir, campgrounds, community developments, power transmission substations and all of their ancillary structures (both Oregon and Idaho), power access/service roads, and moderate to high use road and water traffic, which are all easily seen or heard from these contiguous parcels. The steepness of the terrain and small parcel size, provides an elevated view of the size and scope of the immediately adjacent human imprints, as well as the close proximity (range: less than 100 yards to ¼ mile), makes these human impacts unavoidable, substantial and directly impacts the naturalness of these contiguous parcels. Therefore it is determined that the five smaller parcels adjacent to the power transmission line ROW that follows the Hells Canyon Reservoir road do not meet natural condition criteria.

The northern parcels are not impacted by the same activities as the smaller parcels, and its larger size as well as topographic and some vegetation screening resulting from the passage of time reduces outside impacts to levels where they are for the most part unnoticeable to the average visitor. In summary, the northern parcels appear to be affected primarily by the forces of nature with the imprint of humans substantially unnoticeable to the average visitor. In addition, these northern parcels are further enhanced by the congruous natural condition of the contiguous WSA, as much as the parcel enhances and expands the characteristics of the WSA.

3. Does the unit have outstanding opportunities for solitude?

Yes _____ No X N/A _____

Description: Only those portions of the inventory unit determined to be in a natural condition are subject to a determination regarding outstanding opportunities for solitude. The northern contiguous parcels identified in the inventory unit do not, by themselves, provide for outstanding opportunities for solitude, which is consistent with the same determination for the adjoining Homestead WSA, nor do these parcels provide for the creation of outstanding solitude in conjunction with the WSA. This is due to the unit's transmission line boundary along its east and northern sides, where the overbearing visual presence of the large power line in conjunction with human activities on the MPTs, diminishes the solitude experience of visitors within these parcels of this unit.

Additionally, this is the same situation that exists on the five smaller parcels to the east where the influence of the transmission line ROW structures are so overbearing that it cannot be avoided and eliminates the opportunities for outstanding solitude. These 5 parcels are not directly benefitted by their contiguous association with the WSA, nor is the opportunities for solitude within the WSA enhanced by these 5 parcels individually or in combination.

4. Does the unit have outstanding opportunities for primitive and unconfined recreation?

Yes X No _____ N/A _____

Description: Only those portions of the inventory unit determined to be in a natural condition are subject to a determination regarding outstanding opportunities for primitive and unconfined recreation. There are opportunities for hiking, camping, hunting, sightseeing, and photography. Individually or in combination, these opportunities are not outstanding within the parcels of the unit itself. There are no unique sights or attractions within the northern parcels of the unit to draw visitors to it specifically for pursuing recreation. The described opportunities are enhanced and increased due to its association with the contiguous WSA which in combination with the inventory unit provides outstanding recreation opportunities. By example, hiking opportunities are enhanced by the unit's association with the WSA, which possesses outstanding hiking opportunities.

Additionally, the unit provides enhancement of the WSA characteristics and opportunities by providing additional outstanding primitive recreational opportunities.

The five smaller parcels to the south do not contain opportunities for outstanding recreation. Additionally, these 5 parcels are not directly benefitted by their contiguous association with the WSA, nor is the opportunities within the WSA enhanced by these 5 parcels individually or in combination.

5. Does the unit have supplemental values?

Yes _____ No X N/A _____

Description:

Summary of Findings and Conclusion

Unit Name and Number: OR-035-019 -- Homestead Contiguous

Summary Results of Analysis:

- 1. Does the area meet any of the size requirements? X Yes No
- 2. Does the area appear to be natural? X Yes X No
- 3. Does the area offer outstanding opportunities for solitude or a primitive and unconfined type of recreation? X Yes X No NA
- 4. Does the area have supplemental values? Yes X No NA

Conclusion -- check one:

X The area, or a portion of the area, has wilderness character.

The area does not have wilderness character.

Prepared by: Kevin McCoy 10-3-11
Kevin McCoy, Outdoor Recreation Planner

Team Members:

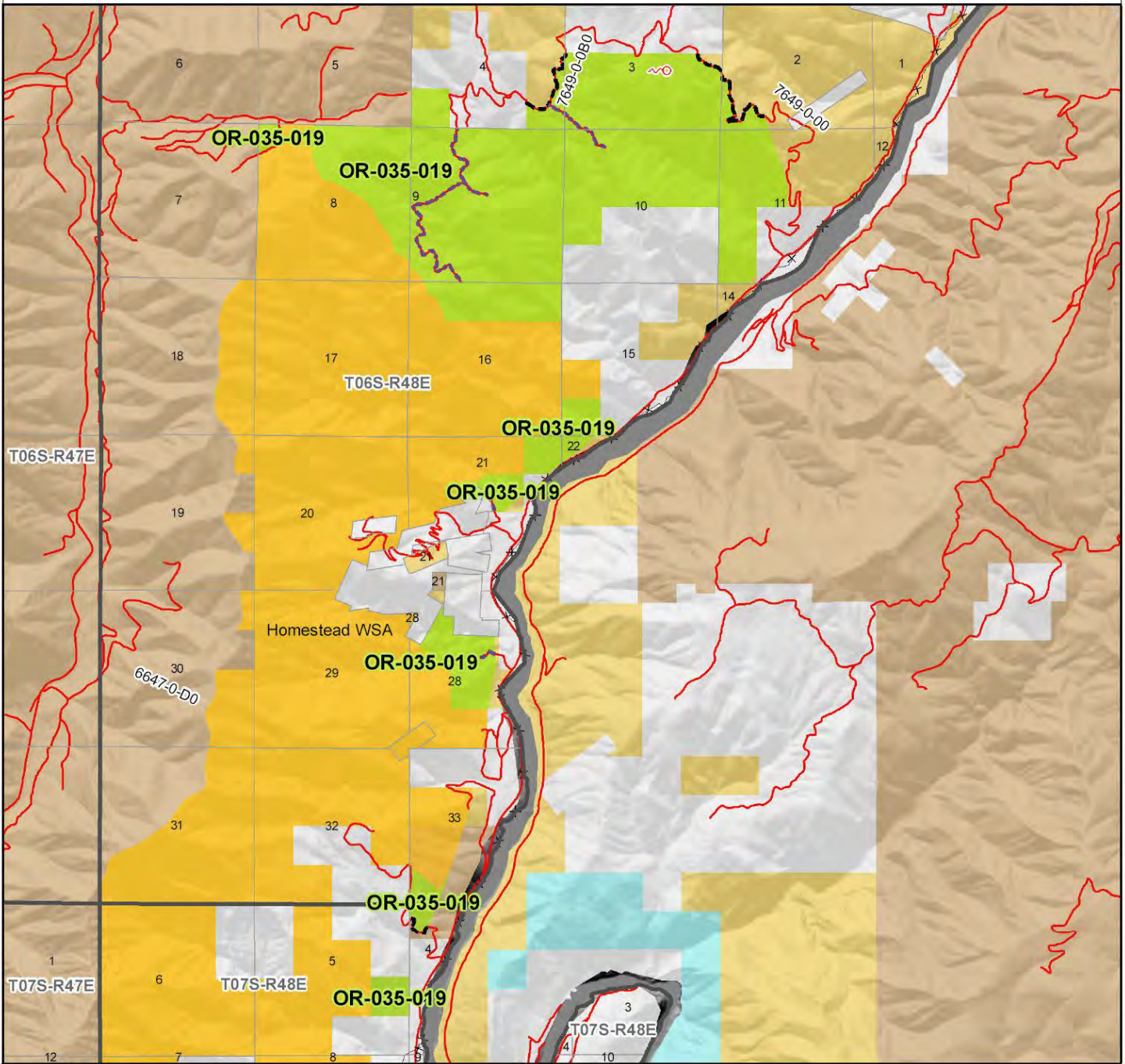
<u>Gary Guymon</u>	10-11-11
Gary Guymon, Rangeland Management Specialist	Date
<u>Marc Pierce</u>	10/11/11
Marc Pierce, Forester/Supervisory Natural Resource Specialist	Date
<u>Katy Coddington</u>	10/5/2011
Katy Coddington, Archeologist	Date
<u>John Quintela</u>	10/11/11
John Quintela, Fisheries Biologist	Date
<u>Melissa Yzquierdo</u>	10/11/11
Melissa Yzquierdo, Wildlife Biologist/Botanist	Date
<u>Eian Ray</u>	10-6-11
Eian Ray, GIS	Date

Approved by: Ted Davis 10-11-11
Ted Davis, Baker Field Office Manager Date

This form documents information that constitutes an inventory finding on wilderness characteristics. It does not represent a formal land use allocation or a final agency decision subject to administrative remedies under either 43 CFR parts 4 or 1610.5-2.

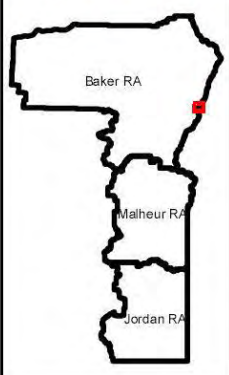
Wilderness Characteristics - Overview

Homestead Contiguous - OR-035-019 - Map 1 of 2



Legend

- | | |
|---|--|
| <ul style="list-style-type: none"> Developed Spring Wildlife Guzzler Earthen Reservoir Pipeline Trough Fence Storage Tank Surface Mining Disturbance Sage Grouse Lek Special Status Plant BLM Wild Char Inventory Unit Wilderness Study Area Mineral Material Site Road/Utility Right-of-Way Major Water Body | <p>Route Types - BLM Determination</p> <ul style="list-style-type: none"> Boundary Road Motorized Primitive Trail (MPT) Discontinued Use <p>Routes - Outside Wild Char Unit</p> <ul style="list-style-type: none"> County Major Highway BLM Numbered & Other Routes <p>Land Ownership</p> <ul style="list-style-type: none"> Bureau of Land Management State Private Other Federal Land |
|---|--|



U.S. DEPARTMENT OF THE INTERIOR
BUREAU OF LAND MANAGEMENT

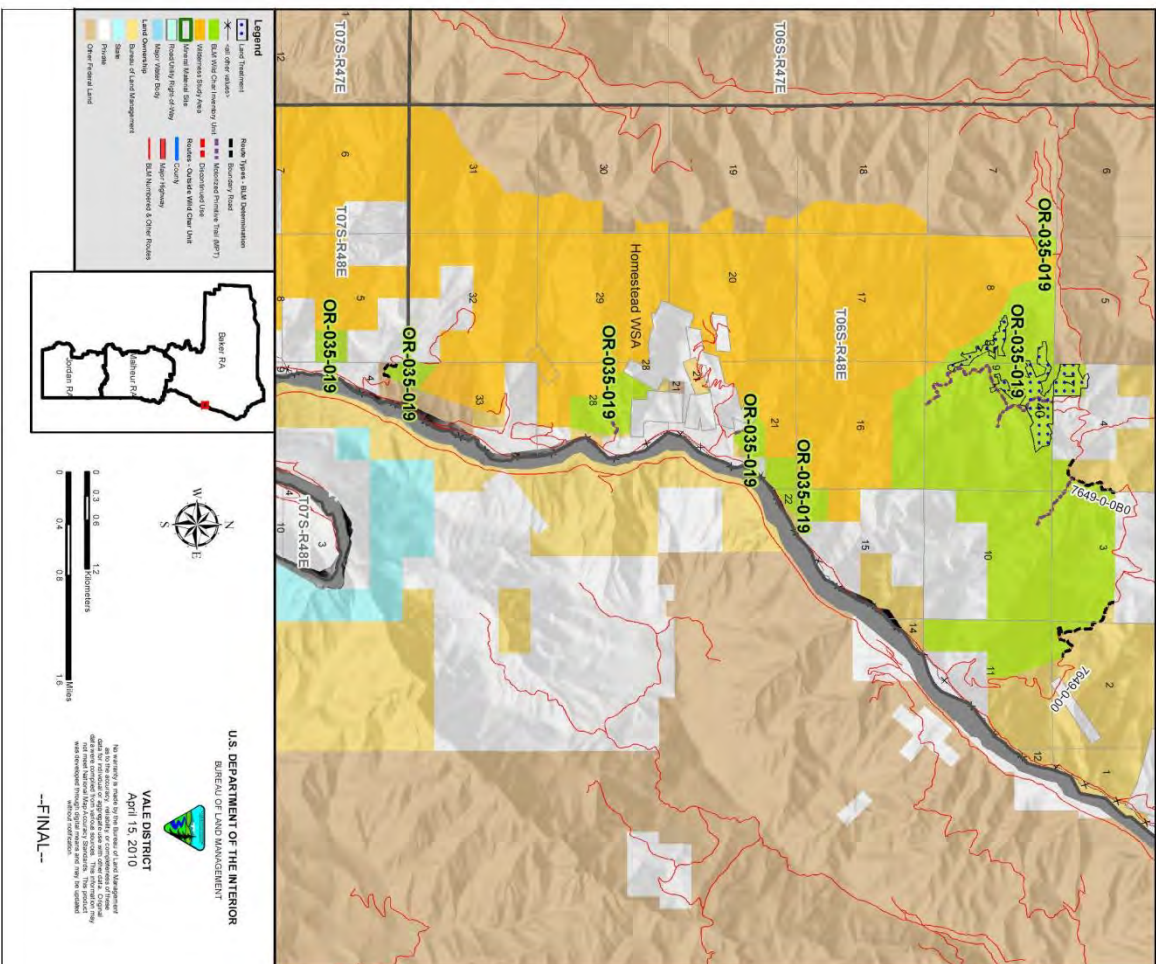


VALE DISTRICT
April 15, 2010

No warranty is made by the Bureau of Land Management as to the accuracy, reliability, or completeness of these data for individual or aggregate use with other data. Original data were compiled from various sources. This information may not meet National Map Accuracy Standards. This product was developed through digital means and may be updated without notification.

--FINAL--

Wilderness Characteristics - Land Treatments
Homestead Contiguous - OR-035-019 - Map 2 of 2



Wilderness Characteristics - Land Treatments
Homestead Contiguous - OR-035-019 - Map 2 of 2

OBJECTID *	NAME	TREATMENT TYPE	SEED GROUP	DATE
17	FOSTER GULCH ESR	Aerial Seeding	Not Applicable	20070101
37	FOSTER GULCH ESR	Straw Mulch	Not Applicable	20070101
40	FOSTER GULCH ESR	Wood Mulch	Not Applicable	20070101

Note: The Land Treatments represented by navy blue dots on the map to the left are labeled with the treatments. ObjectIDs listed in the first field of the Land Treatments table shown above. Multiple types of treatments may have been applied to the same area. For example, one treatment area may have been plowed and drill seeded - a record is shown in the table for each type of treatment.



