

Wilderness Inventory Unit Index of Documents
Henry's Gulch OR-034-090, 10 total pages

Page 1: Index Cover Sheet

[Page 2: Form 1 – Documentation of BLM Wilderness Inventory: Findings on Record](#)

[Page 5: Form 2 – Documentation of Current Wilderness Inventory Conditions](#)

[Page 8: Form 2 – Summary of Findings and Conclusion](#)

[Page 9: Wilderness Characteristics Overview – Henry's Gulch OR-034-090 Map 1 of 2](#)

[Page 10: Wilderness Characteristics-Land Treatments-Henry's Gulch OR-034-090 Map 2 of 2](#)

**Prepared by:
U.S. Department of the Interior
Bureau of Land Management
Vale District Office
100 Oregon Street
Vale, Oregon 97918**



H-6300-1-WILDERNESS INVENTORY MAINTENANCE IN BLM OREGON/WASHINGTON

APPENDIX B – INVENTORY AREA EVALUATION

Evaluation of Current Conditions:

- 1) Document and review the existing BLM wilderness inventory findings on file, if available, regarding the presence or absence of individual wilderness characteristics, using Form 1, below.
- 2) Consider relevant information regarding current conditions available in the office to identify and describe any changes to the existing information (use interdisciplinary (ID) team knowledge, aerial photographs, field observations, maps, etc.), and document your findings on Form 2, below.

When Citizen Information has been submitted regarding wilderness characteristics, document the submitted materials including: date of Submission; Name of District(s) and Field Office(s) Affected; Type of material Submitted (e.g. narrative, map, photo). Evaluate any submitted citizen information regarding the validity of proposed boundaries of the unit(s), the existence of roads and other boundary features, the size of the unit(s), and the presence or absence of wilderness characteristics based on relevant information available in the office (prior BLM inventories, ID team knowledge, aerial photographs, field observations, maps, etc.)

Conduct field reviews as necessary to verify information and to ascertain current conditions. Reach conclusions on current conditions including boundaries, size of areas and presence or absence of wilderness characteristics. Fully explain the basis for each conclusion on form 2, including any critical differences between BLM and citizen information.

Document your findings regarding current conditions for each inventoried area. Describe how the present conditions are similar to, or have changed from, the conditions documented in the original wilderness inventory. Document your findings on Form 2 for each inventory area. Cite to or attach data considered, including photographs, maps, GIS layers, field trip notes, project files, *etc.*

Year: 2010 Unit Number/Name: OR-034-090 — Henrys Gulch

**FORM 1 -- DOCUMENTATION OF BLM WILDERNESS INVENTORY
FINDINGS ON RECORD**

1. Is there existing BLM wilderness inventory information on all or part of this area?

Yes X No _____ (If yes, and if more than one unit is within the area, list the names of those units.):

A.) Inventory Source(s) -- (X) Denotes all applicable BLM Inventory files, printed maps, or published BLM Decision documents with information pertaining to this unit.

Wilderness Inventories

- **(X)** 1978 – BLM Wilderness Inventory Units partially of OR-03-01-10– Henrys Gulch; partially of OR-03-01-09 Alkali Flat (unpublished BLM documents in case files)
- **()** April 1979 – *Wilderness -- Proposed Initial Inventory – Roadless Areas and Islands Which Clearly Do Not have Wilderness Characteristics, Oregon and Washington*

Wilderness Decision Documents

- **()** August 1979 – *Wilderness Review – Initial Inventory, Final Decision on Public Lands Obviously Lacking Wilderness Characteristics and Announcement of Public Lands to be Intensively Inventoried for Wilderness Characteristics, Oregon and Washington* (green document)
- **()** October 1979 – *Wilderness Review – Intensive Inventory - Oregon, Proposed Decision on the Intensive Wilderness Inventory of Selected Areas* (grey document)
- **()** March 1980 – *Wilderness Review – Intensive Inventory; Final Decisions on 30 Selected Units in Southeast Oregon and Proposed Decisions on Other Intensively Inventoried Units in Oregon and Washington* (orange document)
- **()** November 1980 - *Wilderness Inventory – Oregon and Washington, Final Intensive Inventory Decisions* (brown document)
- **()** November 1981 *Stateline Intensive Wilderness Inventory Final Decision, Oregon, Idaho, Nevada, Utah* (tan document)

B.) Inventory Unit Name(s)/Number(s)

Partially of BLM OR-03-01-10, Henrys Gulch, and partially of OR-03-01-09 Alkali Flat

C.) Map Name(s)/Number(s)

- () Final Decision – Initial Wilderness Inventory Map, August 1979, Oregon
- () Proposed Decision -- Intensive Wilderness Inventory of Selected Areas Map, October 1979, Oregon
- () Intensive Wilderness Inventory Map, March 1980, Oregon
- () Intensive Wilderness Inventory --Final Decisions Map, November 1980, Oregon
- () November, 1981 *Stateline Intensive Wilderness Inventory Final Decision, Oregon, Idaho, Nevada, Utah* (tan document)

D.) BLM District(s)/Field Office(s)

Vale District/Malheur Resource Area

2. BLM Inventory Findings on Record

(Existing inventory information regarding wilderness characteristics (if more than one BLM inventory unit is associated with the area, list each unit and answer each question individually for each inventory unit):

Inventory Source: See above.

Unit#/ Name	Size (historic acres)	Natural Condition? Y/N	Outstanding Solitude? Y/N	Outstanding Primitive & Unconfined Recreation? Y/N	Supplemental Values? Y/N
Partially of OR-03-01- 10 Henrys Gulch	4,580	*	*	*	*
Partially of OR-03-01- 09 Alkali Flat	2,400	*	*	*	*
TOTAL	6,980				

* -- These criteria were not addressed during the inventory of this unit since it did not meet any size criteria.

H-6300-1-WILDERNESS INVENTORY MAINTENANCE IN BLM OREGON/WASHINGTON

APPENDIX B – INVENTORY AREA EVALUATION

Evaluation of Current Conditions:

- 1) Document and review the existing BLM wilderness inventory findings on file, if available, regarding the presence or absence of individual wilderness characteristics, using Form 1, below.
- 2) Consider relevant information regarding current conditions available in the office to identify and describe any changes to the existing information (use interdisciplinary (ID) team knowledge, aerial photographs, field observations, maps, etc.), and document your findings on Form 2, below.

When Citizen Information has been submitted regarding wilderness characteristics, document the submitted materials including: date of Submission; Name of District(s) and Field Office(s) Affected; Type of material Submitted (e.g. narrative, map, photo). Evaluate any submitted citizen information regarding the validity of proposed boundaries of the unit(s), the existence of roads and other boundary features, the size of the unit(s), and the presence or absence of wilderness characteristics based on relevant information available in the office (prior BLM inventories, ID team knowledge, aerial photographs, field observations, maps, etc.)

Conduct field reviews as necessary to verify information and to ascertain current conditions. Reach conclusions on current conditions including boundaries, size of areas and presence or absence of wilderness characteristics. Fully explain the basis for each conclusion on form 2, including any critical differences between BLM and citizen information.

Document your findings regarding current conditions for each inventoried area. Describe how the present conditions are similar to, or have changed from, the conditions documented in the original wilderness inventory. Document your findings on Form 2 for each inventory area. Cite to or attach data considered, including photographs, maps, GIS layers, field trip notes, project files, *etc.*

FORM 2 -- DOCUMENTATION OF CURRENT WILDERNESS INVENTORY CONDITIONS

Unit Number/Name: OR-034-090 — Henrys Gulch

Description of Current Conditions: [Include land ownership, location, topography, vegetation features and summary of major human uses/activities.]

1. Is the unit of sufficient size?

Yes X No

Description: Refer to this inventory unit's associated Map 1 for its location. The unit has 8,368 acres of public land. Certain bounds of the unit differ from those of the 1978 BLM inventory. What was determined in 1978 to be a road as the unit's west boundary has since that time changed status to a motorized primitive trail (MPT) since the route is not known to have been mechanically maintained since that time and BLM presently does not intend to conduct such maintenance in the future to provide for relatively regular and continuous use. Thus, the west boundary of this current OR-034-090 unit has moved further west to a combination of another route crossing public lands and certain abutting private lands. A second difference is a private land tract was mistakenly included in the 1978 unit on its north end. Remaining boundary features of OR-034-090 are private land and a road crossing public land on its north side, County road 1073 on its east side, and private land on its south side. A 40 acre designated mineral material site associated with the unit's southwest sector and its 0.9 mile cherry-stem road are also boundary features of the unit.

2. Is the unit in a natural condition?

Yes No X N/A

Description: The unit is characterized by a complex of multidirectional drainages dominated by moderate to steep sloped terrain radiating from an interconnected series of three primary divisional ridge systems. Elevations range from 2,360 to 3,260 feet. The entire unit has been wildfire burned twice – in 1986 and 2000. Present vegetation is predominately a mix of both non-native and native grasses and recovering sage brush.

Refer to this unit's associated Map 1 and Map 2 for human imprints. There are 27 miles of 12 MPTs, 6 which are interconnected to collectively traverse the unit to dissect it into 7 primary tracts of public land. Additionally, a portion of the southwest sector of the unit has a highly dense concentration of MPTs within section 4. Other developments include 11.7 mile of rangeland fence, a 5.7 mile system of buried pipeline with 7 water troughs and one storage tank, 2 earthen reservoirs, a developed spring, and a dated wildlife guzzler. There is one small fenced enclosure in SE ¼ of section 22. Portions of the unit were disc-drill seeded in 1987 with a combination of native and non-native grasses and non-native forbs; currently an average visitor can detect scattered remnants of linear visual contrasts of an approximate 460 acre disc-drilled crested wheatgrass seeding in a livestock pasture associated with the northeast sector of this inventory unit (project

2080). Otherwise, no contrasting visual evidence is apparent from the 1987 disc-drilled seedings or of a 2000 aerial seeding which was conducted over much of the unit.

The expansive dissecting nature of the numerous MPTs – with none greater and mostly less than 1.5 miles separating them from each other or from one of the unit’s boundary roads – combined with the extensive pipeline/trough system and the distribution, location and/or extent of the other visually apparent developments within the unit results in the unit appearing to not be affected primarily by the forces of nature and with the imprint of humans substantially noticeable to the average visitor.

3. Does the unit have outstanding opportunities for solitude?

Yes _____ No X N/A _____

Description: The unit has insufficient vegetative cover for screening between visitors to provide for outstanding opportunities for solitude. The unit’s configuration is basically rectangular, 3 to 3.5 miles wide by 3 to 4.5 miles long. While terrain features allow a visitor to experience a sense of being isolated in some areas of the unit, this is substantially limited due to the extent, location, close spatial distribution and number of MPTs associated with the unit. Thus, no settings or locations – individually or collectively within the unit-- lend themselves to providing outstanding opportunities for solitude.

4. Does the unit have outstanding opportunities for primitive and unconfined recreation?

Yes _____ No X N/A _____

Description: The primary recreation is hunting of common game species (primarily deer and some chukar) and associated hiking. While not a primitive and unconfined recreation opportunity, recreational off highway vehicle travel occurs within the unit. The unit possesses no special or unique features which would draw visitors to it. Individually or in combination, the activities do not provide outstanding opportunities for primitive and unconfined recreation.

5. Does the unit have supplemental values?

Yes X No _____ N/A _____

Description: There is extensive distribution of *Astrogalus mulfordiae*, Mulfords milkvetch and *Hackelia cronquistii*, Cronquists stickweed, within the unit. Both are BLM special status plant species.

Vale District’s administratively designated 3,520 acre South Alkali Sand Hills Area of Critical Environmental Concern (ACEC) is fully within the inventory unit. The relevant and important values of the ACEC are the two stated special status plant species and their habitat.

Summary of Findings and Conclusion

Unit Name and Number: OR-034-090 -- Henrys Gulch

Summary Results of Analysis:

- 1. Does the area meet any of the size requirements? Yes No
- 2. Does the area appear to be natural? Yes No
- 3. Does the area offer outstanding opportunities for solitude or a primitive and unconfined type of recreation? Yes No NA
- 4. Does the area have supplemental values? Yes No NA

Conclusion -- check one:

The area, or a portion of the area, has wilderness character.

The area does not have wilderness character.

Prepared by: Robert Alward
Robert Alward, Wilderness Planner contractor

Team Members:

<u>Garry Brown</u>	<u>12/6/10</u>
Garry Brown, Rangeland Management Specialist	Date
<u>Daniel J Thomas</u>	<u>12/6/10</u>
Dan Thomas, Range Technician	Date
<u>Gillian Wigglesworth</u>	<u>12/6/10</u>
Gillian Wigglesworth, Botanist	Date
<u>Michelle Caviness</u>	<u>12/6/10</u>
Michelle Caviness, Wildlife Biologist	Date
<u>Eian Ray</u>	<u>12-6-10</u>
Eian Ray, GIS Specialist, contractor	Date
<u>Brent Grasty</u>	<u>12/9/10</u>
Brent Grasty, GIS Coordinator	Date

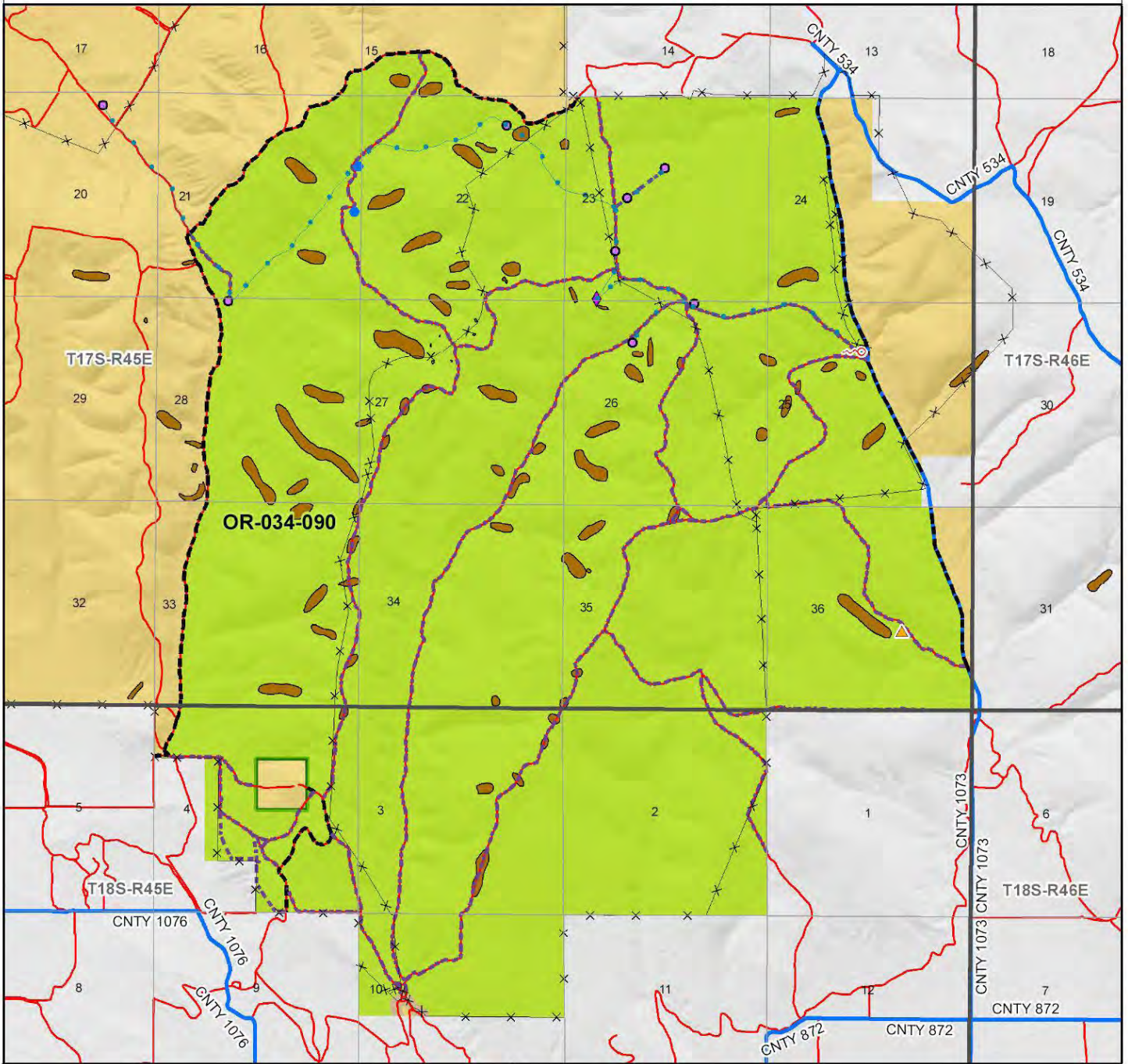
Approved by: Pat Ryan
Pat Ryan, Malheur Resource Area Field Manager

12/13/10
Date

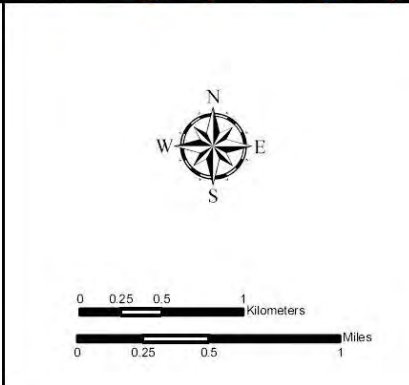
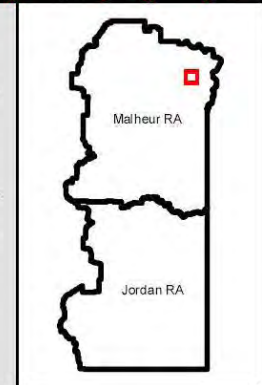
This form documents information that constitutes an inventory finding on wilderness characteristics. It does not represent a formal land use allocation or a final agency decision subject to administrative remedies under either 43 CFR parts 4 or 1610.5-2.

Wilderness Characteristics - Overview

Henry's Gulch - OR-034-090 - Map 1 of 2



Legend	
	Developed Spring
	Wildlife Guzzler
	Earthen Reservoir
	Pipeline
	Trough
	Fence
	Storage Tank
	Surface Mining Disturbance
	Sage Grouse Lek
	Special Status Plant
	BLM Wild Char Inventory Unit
	Wilderness Study Area
	Mineral Material Site
	Road/Utility Right-of-Way
	Major Water Body
	Route Types - BLM Determination
	Boundary Road
	Motorized Primitive Trail (MPT)
	Discontinued Use
	Routes - Outside Wild Char Unit
	County
	Major Highway
	BLM Numbered & Other Routes
	Land Ownership
	Bureau of Land Management
	State
	Private
	Other Federal Land



U.S. DEPARTMENT OF THE INTERIOR
BUREAU OF LAND MANAGEMENT

VALE DISTRICT
 September 22, 2010
No warranty is made by the Bureau of Land Management as to the accuracy, reliability, or completeness of these data for individual or aggregate use with other data. Original data were compiled from various sources. This information may not meet National Map Accuracy Standards. This product was developed through digital means and may be updated without notification.
--FINAL--

