

Wilderness Inventory Unit Index of Documents  
**Gluch OR-036-062, 11 total pages**

Page 1: Index Cover Sheet

[Page 2: Form 1 – Documentation of BLM Wilderness Inventory: Findings on Record](#)

[Page 5: Form 2 – Documentation of Current Wilderness Inventory Conditions](#)

[Page 9: Form 2 – Summary of Findings and Conclusion](#)

[Page 10: Wilderness Characteristics Overview–Gluch OR-036-062 Map 1 of 2](#)

[Page 11: Wilderness Characteristics-Land Treatments-Gluch OR-036-062 Map 2 of 2](#)

**Prepared by:**  
**U.S. Department of the Interior**  
**Bureau of Land Management**  
**Vale District Office**  
**100 Oregon Street**  
**Vale, Oregon 97918**



## **H-6300-1-WILDERNESS INVENTORY MAINTENANCE IN BLM OREGON/WASHINGTON**

### **APPENDIX B – INVENTORY AREA EVALUATION**

#### **Evaluation of Current Conditions:**

- 1) Document and review the existing BLM wilderness inventory findings on file, if available, regarding the presence or absence of individual wilderness characteristics, using Form 1, below.
- 2) Consider relevant information regarding current conditions available in the office to identify and describe any changes to the existing information (use interdisciplinary (ID) team knowledge, aerial photographs, field observations, maps, etc.), and document your findings on Form 2, below.

When Citizen Information has been submitted regarding wilderness characteristics, document the submitted materials including: date of Submission; Name of District(s) and Field Office(s) Affected; Type of material Submitted (e.g. narrative, map, photos). Evaluate any submitted citizen information regarding the validity of proposed boundaries of the unit(s), the existence of roads and other boundary features, the size of the unit(s), and the presence or absence of wilderness characteristics based on relevant information available in the office (prior BLM inventories, ID team knowledge, aerial photographs, field observations, maps, etc.)

Conduct field reviews as necessary to verify information and to ascertain current conditions. Reach conclusions on current conditions including boundaries, size of areas and presence or absence of wilderness characteristics. Fully explain the basis for each conclusion on form 2, including any critical differences between BLM and citizen information.

Document your findings regarding current conditions for each inventoried area. Describe how the present conditions are similar to, or have changed from, the conditions documented in the original wilderness inventory. Document your findings on Form 2 for each inventory area. Cite to or attach data considered, including photographs, maps, GIS layers, field trip notes, project files, *etc.*

**Year:** 2011      **Unit Number/Name:** OR-036-062--Gulch

**FORM 1 -- DOCUMENTATION OF BLM WILDERNESS INVENTORY  
FINDINGS ON RECORD**

**1. Is there existing BLM wilderness inventory information on all or part of this area?**

Yes  No  (If yes, and if more than one unit is within the area, list the names of those units.):

**A.) Inventory Source(s) -- (X)** Denotes all applicable BLM Inventory files, printed maps, or published BLM Decision documents with information pertaining to this unit.

**Wilderness Inventories**

- (X) 1978 – BLM Wilderness Inventory Units 3-135 of OR-03-10-22 Gulch; OR-03-10-20 Jaca (unpublished BLM documents stored in Vale District case files)
- (X) April 1979 – *Wilderness -- Proposed Initial Inventory – Roadless Areas and Islands Which Clearly Do Not have Wilderness Characteristics, Oregon and Washington*

**Wilderness Decision Documents**

- (X) August 1979 – *Wilderness Review – Initial Inventory, Final Decision on Public Lands Obviously Lacking Wilderness Characteristics and Announcement of Public Lands to be Intensively Inventoried for Wilderness Characteristics, Oregon and Washington* (green document)
- ( ) October 1979 – *Wilderness Review – Intensive Inventory - Oregon, Proposed Decision on the Intensive Wilderness Inventory of Selected Areas* (grey document).
- ( ) March 1980 – *Wilderness Review – Intensive Inventory; Final Decisions on 30 Selected Units in Southeast Oregon and Proposed Decisions on Other Intensively Inventoried Units in Oregon and Washington* (orange document)
- ( ) November 1980 - *Wilderness Inventory – Oregon and Washington, Final Intensive Inventory Decisions* (brown document)
- ( ) November 1981 *Stateline Intensive Wilderness Inventory Final Decision, Oregon, Idaho, Nevada, Utah* (tan document).

**B.) Inventory Unit Name(s)/Number(s)**

BLM 3-135 of OR-03-10-22 Gulch; OR-03-10-20 Jaca

**C.) Map Name(s)/Number(s)**

- Final Decision – Initial Wilderness Inventory Map, August 1979, Oregon
- Proposed Decision -- Intensive Wilderness Inventory of Selected Areas Map, October 1979, Oregon
- Intensive Wilderness Inventory Map, March 1980, Oregon
- Intensive Wilderness Inventory --Final Decisions Map, November 1980, Oregon.
- November, 1981 *Stateline Intensive Wilderness Inventory Final Decision, Oregon, Idaho, Nevada, Utah* (tan document).

**D.) BLM District(s)/Field Office(s)**

Vale District Office

Jordan Field Office

**2. BLM Inventory Findings on Record**

(Existing inventory information regarding wilderness characteristics (if more than one BLM inventory unit is associated with the area, list each unit and answer each question individually for each inventory unit):

**Inventory Source:** See above.

<b>Unit# / Name</b>	<b>Size (historic acres)</b>	<b>Natural Condition? Y/N</b>	<b>Outstanding Solitude? Y/N</b>	<b>Outstanding Primitive &amp; Unconfined Recreation? Y/N</b>	<b>Supplemental Values? Y/N</b>
3-135 of OR-03-10-22 Gulch	18,240	N	*	*	*
OR-03-10-20 Jaca	820	*	*	*	*
<b>TOTAL</b>	19,660				

\*--These criteria were not specifically addressed in the inventory of this unit.

## **H-6300-1-WILDERNESS INVENTORY MAINTENANCE IN BLM OREGON/WASHINGTON**

### **APPENDIX B – INVENTORY AREA EVALUATION**

#### **Evaluation of Current Conditions:**

- 1) Document and review the existing BLM wilderness inventory findings on file, if available, regarding the presence or absence of individual wilderness characteristics, using Form 1, below.
- 2) Consider relevant information regarding current conditions available in the office to identify and describe any changes to the existing information (use interdisciplinary (ID) team knowledge, aerial photographs, field observations, maps, etc.), and document your findings on Form 2, below.

When Citizen Information has been submitted regarding wilderness characteristics, document the submitted materials including: date of Submission; Name of District(s) and Field Office(s) Affected; Type of material Submitted (e.g. narrative, map, and photos). Evaluate any submitted citizen information regarding the validity of proposed boundaries of the unit(s), the existence of roads and other boundary features, the size of the unit(s), and the presence or absence of wilderness characteristics based on relevant information available in the office (prior BLM inventories, ID team knowledge, aerial photographs, field observations, maps, etc.)

Conduct field reviews as necessary to verify information and to ascertain current conditions. Reach conclusions on current conditions including boundaries, size of areas and presence or absence of wilderness characteristics. Fully explain the basis for each conclusion on form 2, including any critical differences between BLM and citizen information.

Document your findings regarding current conditions for each inventoried area. Describe how the present conditions are similar to, or have changed from, the conditions documented in the original wilderness inventory. Document your findings on Form 2 for each inventory area. Cite to or attach data considered, including photographs, maps, GIS layers, field trip notes, project files, *etc.*

## **FORM 2 -- DOCUMENTATION OF CURRENT WILDERNESS INVENTORY CONDITIONS**

**Unit Number/Name:** OR-036-062 Gluch

**Description of Current Conditions:** [Include land ownership, location, topography, vegetation features and summary of major human uses/activities.]

### **1. Is the unit of sufficient size?**

Yes   X   No       

**Description:** Refer to this inventory unit's associated Map 1 for BLM's Unit OR-036-062 location. The boundary of the 16,398 acre unit includes partials of BLM's original 1970's inventory unit 3-135 and the small Jaca unit that was excluded from further intensive inventory because of it not meeting the size criteria. Acreage for Unit OR-036-062 in Form 2 is calculated from BLM GIS information. BLM Unit OR-036-062 is bounded on its north side by BLM Road 6373-00, on its west side by an utility corridor right-of-way for an unnumbered Malheur County Road and one mineral material site right-of-way, on its south side by BLM Road 6370-00 and 1.45 miles of irrigation canal right-of-way, and on its east side by Malheur County Road 806. The natural-surfaced boundary roads receive mechanical maintenance as needed to keep them passable on a regular and continuous (seasonal) basis.

### **2. Is the unit in a natural condition?**

Yes        No   X   N/A       

**Description:** Given BLM's Unit OR-036-062 size relative to the evidence of man-made developments especially in the southern half of the unit, the unit appears to be affected not primarily by the forces of nature but with the imprint of humans that is substantially noticeable to the average visitor. Most of the unit is dominated by a group of moderately sized hills that are highly dissected by small drainages of Spring, Rock, and Jack creeks. The elevated east and central area of the unit slopes mostly to the north and west where the landscape transitions to fewer drainage channels dissecting the relatively flatter terrain. Both Rock and Jack creeks flow into Jordan Creek while Spring Creek flows to the west then south into Soldier Creek. Elevation within the unit ranges from 4,280 feet to 5,040 feet, with the upper elevations located mostly in the unit's east and northeastern area while the unit's lower elevations are located along the northwest and west boundaries. Sparsely populated vegetation throughout the unit consists predominately of big and low sagebrush with both native and non-native grass species.

Refer to this inventory unit's associated Map 1 and Map 2 for its human developments in BLM's Unit OR-036-062. Developments within the unit include 18.1 miles of 12 MPTs, one pipeline system with 7.5 miles of pipelines and 10 troughs, 6 earthen reservoirs, two reservoir exclosures, one mineral material site, 1.35 miles of irrigation canal right-of-way, 19.1 miles of fence line, and 5 vegetation manipulation treatments conducted from 1961 through 1967. The vegetation treatments were conducted on approximately twenty-six percent of the unit over a six year period. A large portion of the sagebrush component along the southern portion of the unit has been reduced by the various vegetation treatments conducted during this period, although to the average visitor, the vegetation treatments conducted in the unit presently appear as a whole, individually and collectively, mostly indistinguishable across the landscape. Because of the numerous man-made-developments scattered throughout the unit and the location of MPTs that dissect the landscape the unit does not appear affected primarily by the forces of nature.

### 3. Does the unit have outstanding opportunities for solitude?

Yes \_\_\_\_\_ No  X  N/A \_\_\_\_\_

**Description:** BLM concludes that BLM Unit OR-036-062 does not provide outstanding opportunities for solitude. Much of the character of the inventory unit has not changed since the 1970's. The unit is mostly an irregular rectangle in shape, with a narrower width in the eastern third of the unit. The width of the unit averages about four miles wide throughout the central and western portions while the width within the eastern area is less than two miles. The length of the unit is about eight miles in its northern half and about four to six miles in length in the southern half of the unit. Diversity in landscape relief throughout the unit is limited to mostly flat to gentle sloping terrain in the northern and western portions of the unit while the east and northeast areas contain a few rolling ridges and hill tops that are dissected by numerous small drainages of Jack and Rock creeks. Elevation gradually rises in the unit by about 800 feet from the west to the high point of the unit located in the northeast portion of the unit. The terrain within the unit provides little diversity that one might experience any opportunities of solitude. The unit's vegetation that is comprised of both low and big sage brush and both native and non-native grasses across the landscape does not provide any extensive vegetative screening opportunities for solitude or a sense of isolation in a large portions of the unit. Approximately one-fourth of the unit lacks a large portion of its sagebrush vegetation screening component when it was reduced by vegetation treatments throughout the 1960s. The locations of MPTs that dissect the unit in relation to the unit's boundary roads limit the extent of available areas that one could experience opportunities for solitude. As a result of the area's size relative to its shape, the absence of large diverse areas, the location of roads and MPTs, the absence of vegetative screening, and the lack of diversity in relief, there is no outstanding opportunities for solitude within the unit.

**4. Does the unit have outstanding opportunities for primitive and unconfined recreation?**Yes \_\_\_\_\_ No  N/A \_\_\_\_\_

**Description:** BLM concludes that BLM Unit OR-036-062 does not provide outstanding opportunities for primitive and unconfined recreation. The most dominate dispersed recreation activities within the unit would be hiking throughout the central and eastern rolling hills or hunting of game species (primarily deer, chukar and antelope). Other than nearly flat northwestern and western terrain that exists over almost fifty percent of the unit there are no unique or special features associated with the unit that would attract a visitor who is seeking a primitive and unconfined recreational experience. Recreational pursuits within the area, individually or collectively, are not outstanding in character or nature for the unit.

**5. Does the unit have supplemental values?**Yes  No \_\_\_\_\_ N/A \_\_\_\_\_

**Description:** BLM has documented three sage grouse leks within the unit. The bird is a BLM special status animal species.



Summary of Findings and Conclusion

Unit Name and Number: OR-036-062-- Gluch

Summary Results of Analysis:

- 1. Does the area meet any of the size requirements?  Yes  No
- 2. Does the area appear to be natural?  Yes  No
- 3. Does the area offer outstanding opportunities for solitude or a primitive and unconfined type of recreation?  Yes  No  NA
- 4. Does the area have supplemental values?  Yes  No  NA

Conclusion -- check one:

The area, or a portion of the area, has wilderness character.

The area does not have wilderness character.

Prepared by: Jack R Wenderoth 11-16-11  
Jack Wenderoth, Planning Contractor

Team Members:

<u>Keri Fredrick</u>	<u>11-16-11</u>
Keri Fredrick, Outdoor Recreation Planner	Date
<u>Aimee Huff</u>	<u>11/16/2011</u>
Aimee Huff, Rangeland Management Specialist	Date
<u>Eian Ray</u>	<u>11-16-11</u>
Eian Ray, GIS Specialist, Contractor	Date
<u>Garth Ross</u>	<u>11/16/2011</u>
Garth Ross, Wildlife Biologist	Date
<u>Brent Grasty</u>	<u>11/16/11</u>
Brent Grasty, GIS Coordinator	Date

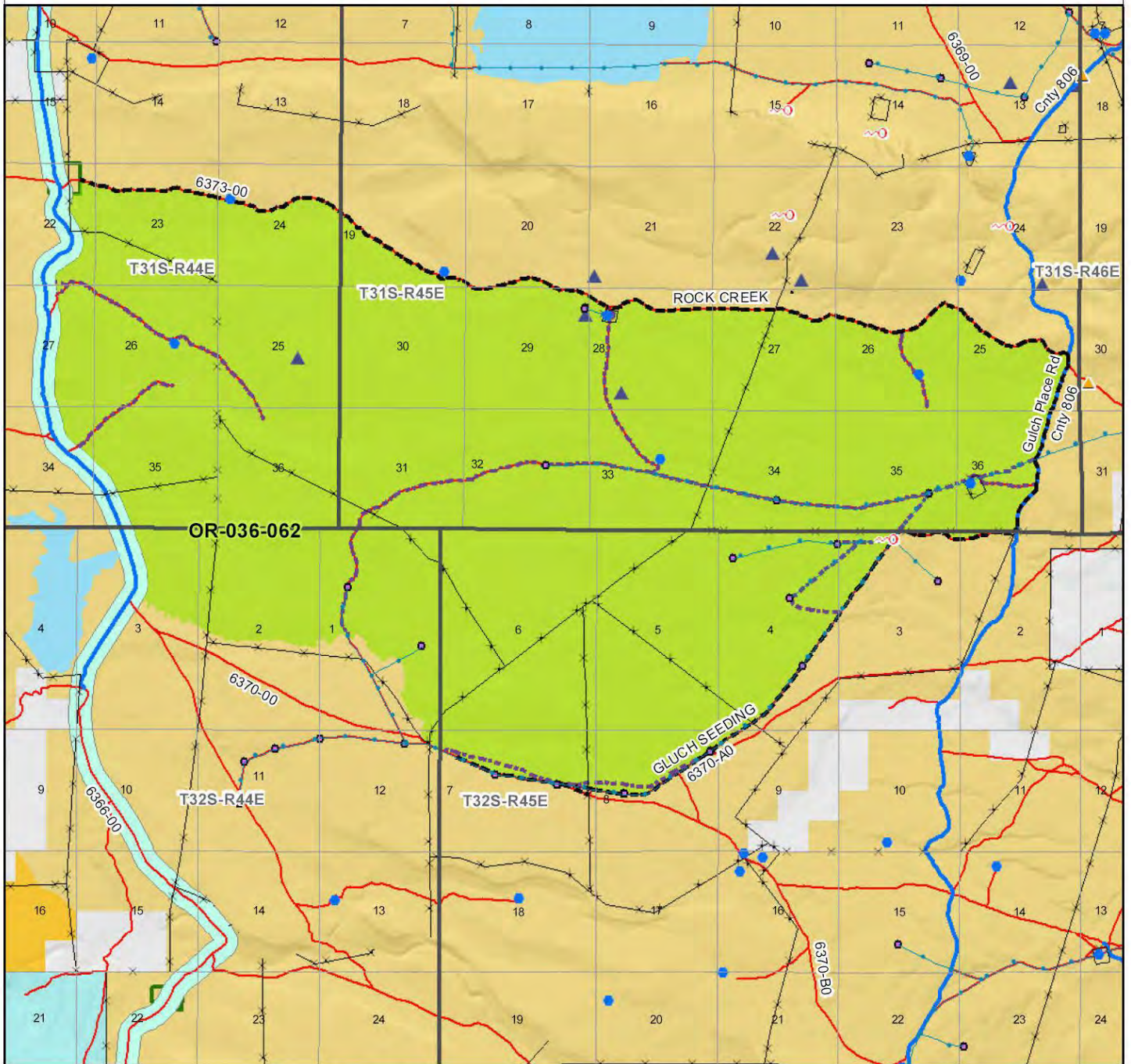
Approved by:

Carolyn R Chod 11/28/2011  
Carolyn Freeborn, Jordan Resource Area Field Manager Date

*This form documents information that constitutes an inventory finding on wilderness characteristics. It does not represent a formal land use allocation or a final agency decision subject to administrative remedies under either 43 CFR parts 4 or 1610.5-2.*

# Wilderness Characteristics - Overview

## Gluch - OR-036-062 - Map 1 of 2



**Legend**

- Developed Spring
- Wildlife Guzzler
- Earthen Reservoir
- Pipeline
- Trough
- Fence
- Storage Tank
- Surface Mining Disturbance
- Sage Grouse Lek
- Special Status Plant
- BLM Wild Char Inventory Unit
- Wilderness Study Area
- Mineral Material Site
- Road/Utility Right-of-Way
- Major Water Body

**Route Types - BLM Determination**

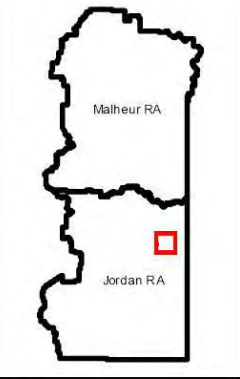
- Boundary Road
- Motorized Primitive Trail (MPT)
- Discontinued Use

**Routes - Outside Wild Char Unit**

- County
- Major Highway
- BLM Numbered & Other Routes

**Land Ownership**

- Bureau of Land Management
- State
- Private
- Other Federal Land



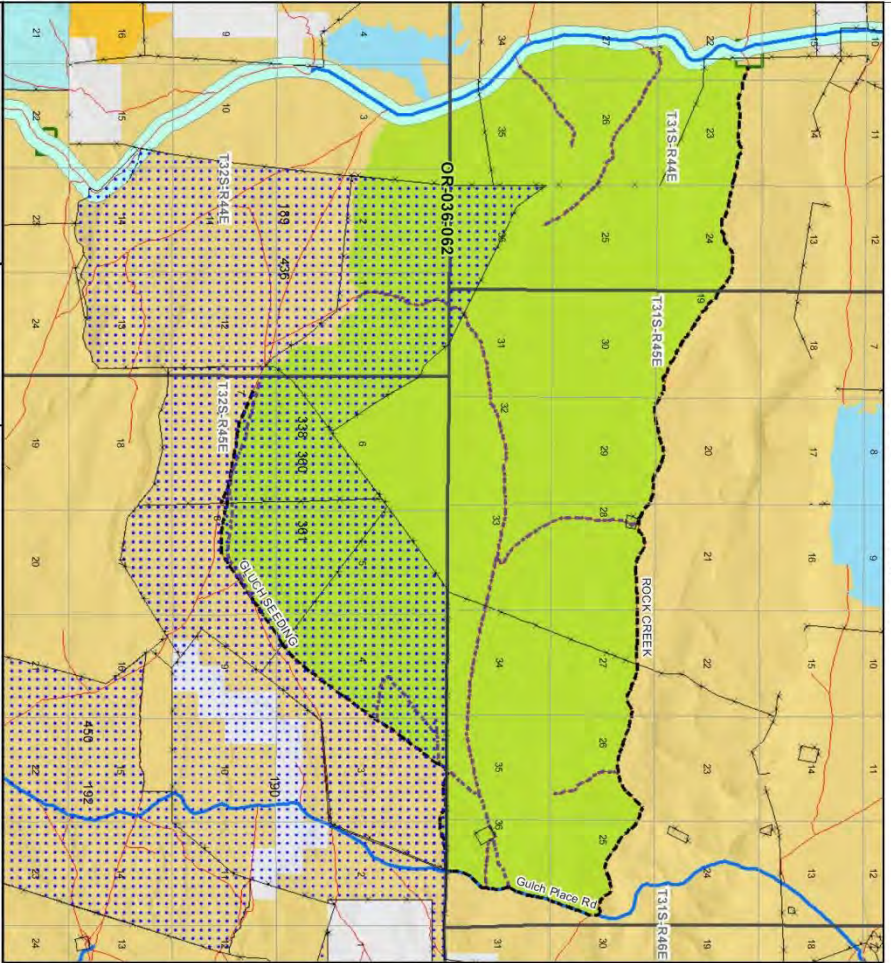
**U.S. DEPARTMENT OF THE INTERIOR**  
 BUREAU OF LAND MANAGEMENT

**VALE DISTRICT**  
 October 20, 2011

No warranty is made by the Bureau of Land Management as to the accuracy, reliability, or completeness of these data for individual or aggregate use with other data. Original data were compiled from various sources. This information may not meet National Map Accuracy Standards. This product was developed through digital means and may be updated without notification.

**--FINAL--**

**Wilderness Characteristics - Land Treatments**  
**Gluch - OR-036-062 - Map 2 of 2**



**Wilderness Characteristics - Land Treatments**  
**Gluch - OR-036-062 - Map 2 of 2**

OBJECTID*	NAME	TREATMENT TYPE	SEED GROUP	DATE
189	BLACK BUTTE SDG	Plow/Disc	Not Applicable	1967
190	BLACK BUTTE B.C.	Chemical Treatment	Not Applicable	1967
192	FRANK MAHER B.C. & SDG	Chemical Treatment	Not Applicable	1969
338	GLUCH B.C.	Chemical Treatment	Not Applicable	1961
380	GLUCH SDG	Chemical Treatment	Not Applicable	1961
361	GLUCH SDG	Drill Seeding	Non-native Grasses	1961
436	BLACK BUTTE SDG	Drill Seeding	Non-native Grasses	1967
450	FRANK MAHER B.C. & SDG	Drill Seeding	Non-native Grasses	1969

Note: The Land Treatments represented by navy blue dots on the map to the left are labeled with the treatments' ObjectIDs listed in the first field of the Land Treatments table shown above. Multiple types of treatments may have been applied to the same area. For example, one treatment area may have been plowed and drill seeded - a record is shown in the table for each type of treatment.

**Legend**

- Land Ownership:
  - Public Lands (Bureau of Land Management)
  - Private Lands (Bureau of Land Management)
  - Private Lands (Other Agencies)
  - Private Lands (Other Owners)
- Boundaries:
  - Section Boundary
  - Quarter Section Boundary
  - County Boundary
  - Water Boundary
  - Other Boundary
- Other:
  - Water
  - Other

**Scale:** 0 0.5 1 2 Kilometers / 0 0.5 1 2 Miles

**U.S. DEPARTMENT OF THE INTERIOR**  
 BUREAU OF LAND MANAGEMENT

**VALE DISTRICT**  
 October 20, 2011

**-FINAL-**