

LEGEND

BUILDINGS AND RELATED STRUCTURES

Building

■

BASELINE CONTOURS

Index

Approximate of indefinite

Intermediate

Approximate of indefinite

Supplementary

ROADS AND RELATED FEATURES

Light duty road, gravel

Gate on road

RIVERS, LAKES, SHORELINES, AND CANALS

Perennial river

Intermittent lake/pond

Drainage Direction

TRANSMISSION LINES AND PIPELINES

Power transmission line, pole, tower

Power transmission line, buried

Telephone/data line, above ground

Telephone/data line, buried

Pipeline (non-water), above ground

Pipeline (non-water), buried

MINING FEATURES

BLM Permit Boundary

Fixed Structures

Mobile Structures

Mining Stages

Berm/Window

POST-MINING CONTOURS

Index

Approximate of indefinite

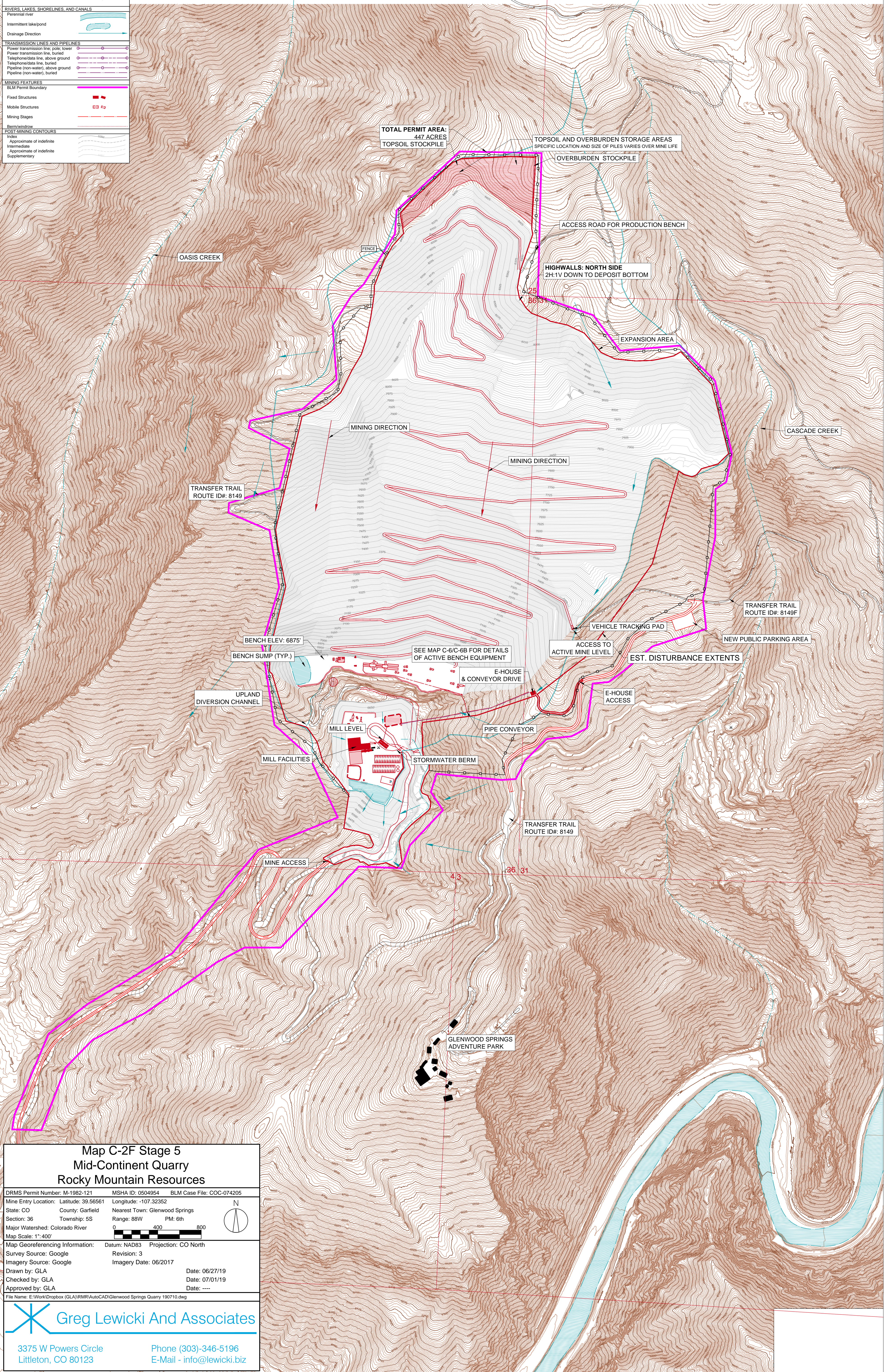
Intermediate

Approximate of indefinite

Supplementary

TOPOGRAPHY SHOWN WITHIN THE QUARRY ON THIS MAP IS CONCEPTUAL. IT REPRESENTS THE APPROXIMATED SHAPE OF THE BOTTOM OF THE MINED DEPOSIT AS ESTIMATED FROM EXPLORATION DATA. ACTUAL FINAL TOPOGRAPHY WILL FLUCTUATE ALONG WITH THE BOTTOM OF THE MINED DEPOSIT.

MINING AND RECLAMATION WILL BE CONDUCTED CONCURRENTLY. THIS MAP SHOWS MINING SLOPES WITHOUT RECLAMATION FOR REFERENCE ONLY.



Map C-2F Stage 5

Mid-Continent Quarry

Rocky Mountain Resources

DRMS Permit Number: M-1982-121

MSHA ID: 0504954

BLM Case File: COC-074205

Mine Entry Location: Latitude: 39.56561

State: CO

County: Garfield

Section: 36

Township: 5S

Major Watershed: Colorado River

Map Scale: 1"=400'

Longitude: -107.32352

Nearest Town: Glenwood Springs

Range: 88W

PM: 6th

0 400 800

Map Georeferencing Information:

Datum: NAD83

Projection: CO North

Survey Source: Google

Imagery Source: Google

Imagery Date: 06/2017

Drawn by: GLA

Checked by: GLA

Approved by: GLA

Date: 06/27/19

Date: 07/01/19

Date: ----

File Name: E:\Work\Dropbox (GLA)\RMR\AutoCAD\Glenwood Springs Quarry 190710.dwg

Greg Lewicki And Associates

3375 W Powers Circle

Littleton, CO 80123

Phone (303)-346-5196

E-Mail - info@lewicki.biz