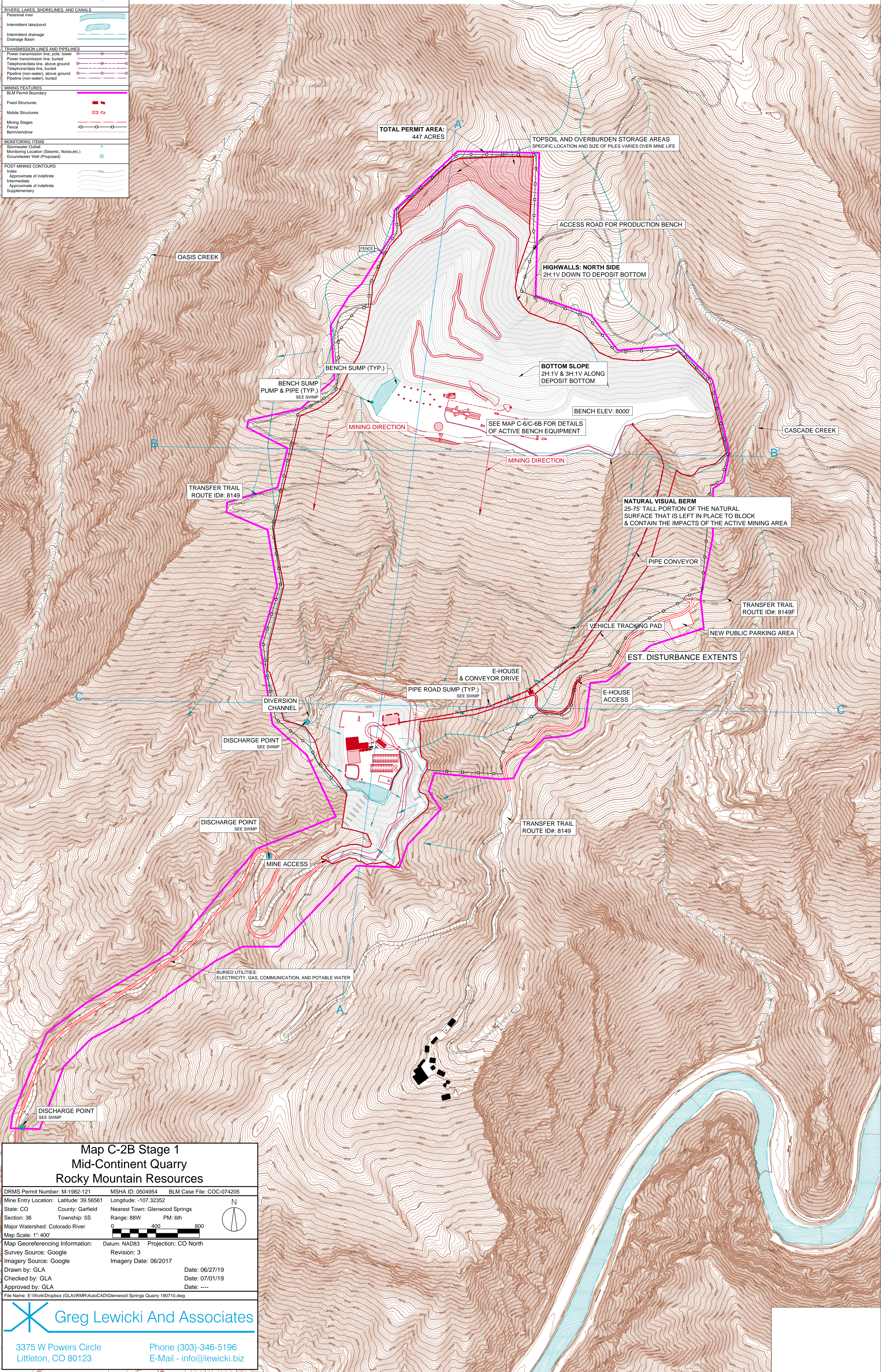


LEGEND	
BUILDINGS AND RELATED STRUCTURES	
Building	
BASELINE CONTOURS	
Index	
Approximate of indefinite	
Intermediate	
Approximate of indefinite	
Supplementary	
ROADS AND RELATED FEATURES	
Light duty road, gravel	
Gate on road	
RIVERS, LAKES, SHORELINES, AND CANALS	
Perennial river	
Intermittent lake/pond	
Intermittent drainage	
Drainage Basin	
TRANSMISSION LINES AND PIPELINES	
Power transmission line, pole tower	
Power transmission line, buried	
Telephone/data line, above ground	
Telephone/data line, buried	
Pipeline (non-water), above ground	
Pipeline (non-water), buried	
MINING FEATURES	
BLM Permit Boundary	
Fixed Structures	
Mobile Structures	
Mining Stages	
Fence	
Berm/Window	
MONITORING ITEMS	
Stormwater Outfall	
Monitoring Location (Seismic, Noise, etc.)	
Groundwater Well (Proposed)	
POST-MINING CONTOURS	
Index	
Approximate of indefinite	
Intermediate	
Approximate of indefinite	
Supplementary	

TOPOGRAPHY SHOWN WITHIN THE QUARRY ON THIS MAP IS CONCEPTUAL. IT REPRESENTS THE APPROXIMATED SHAPE OF THE BOTTOM OF THE MINED DEPOSIT AS ESTIMATED FROM EXPLORATION DATA. ACTUAL FINAL TOPOGRAPHY WILL FLUCTUATE ALONG WITH THE BOTTOM OF THE MINED DEPOSIT.

MINING AND RECLAMATION WILL BE CONDUCTED CONCURRENTLY. THIS MAP SHOWS MINING SLOPES WITHOUT RECLAMATION FOR REFERENCE ONLY.



Map C-2B Stage 1

Mid-Century Quarry

Rocky Mountain Resources

DRMS Permit Number: M-1982-121	MSHA ID: 0504954	BLM Case File: COC-074205
Mine Entry Location: Latitude: 39.56561	Longitude: -107.32352	
State: CO	County: Garfield	Nearest Town: Glenwood Springs
Section: 36	Township: 5S	Range: 88W
Major Watershed: Colorado River		PM: 6th
Map Scale: 1"=400'		
Map Georeferencing Information:	Datum: NAD83	Projection: CO North
Survey Source: Google	Revision: 3	
Imagery Source: Google	Imagery Date: 06/2017	
Drawn by: GLA	Date: 06/27/19	
Checked by: GLA	Date: 07/01/19	
Approved by: GLA	Date: ----	
File Name: E:\Work\Dropbox (GLA)\RMR\AutoCAD\Glenwood Springs Quarry 190710.dwg		

Greg Lewicki And Associates

3375 W Powers Circle

Littleton, CO 80123

Phone (303)-346-5196

E-Mail - info@lewicki.biz