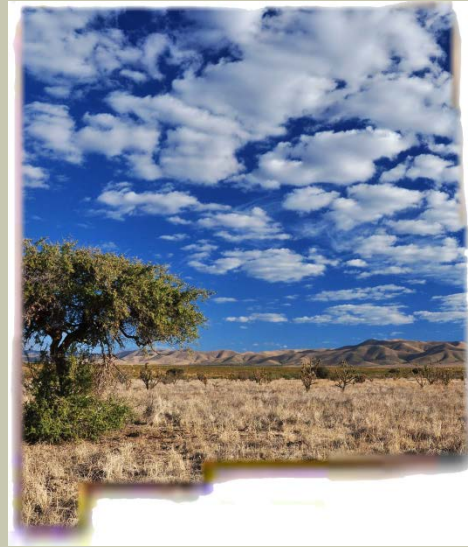


BLM New Mexico Las Cruces District

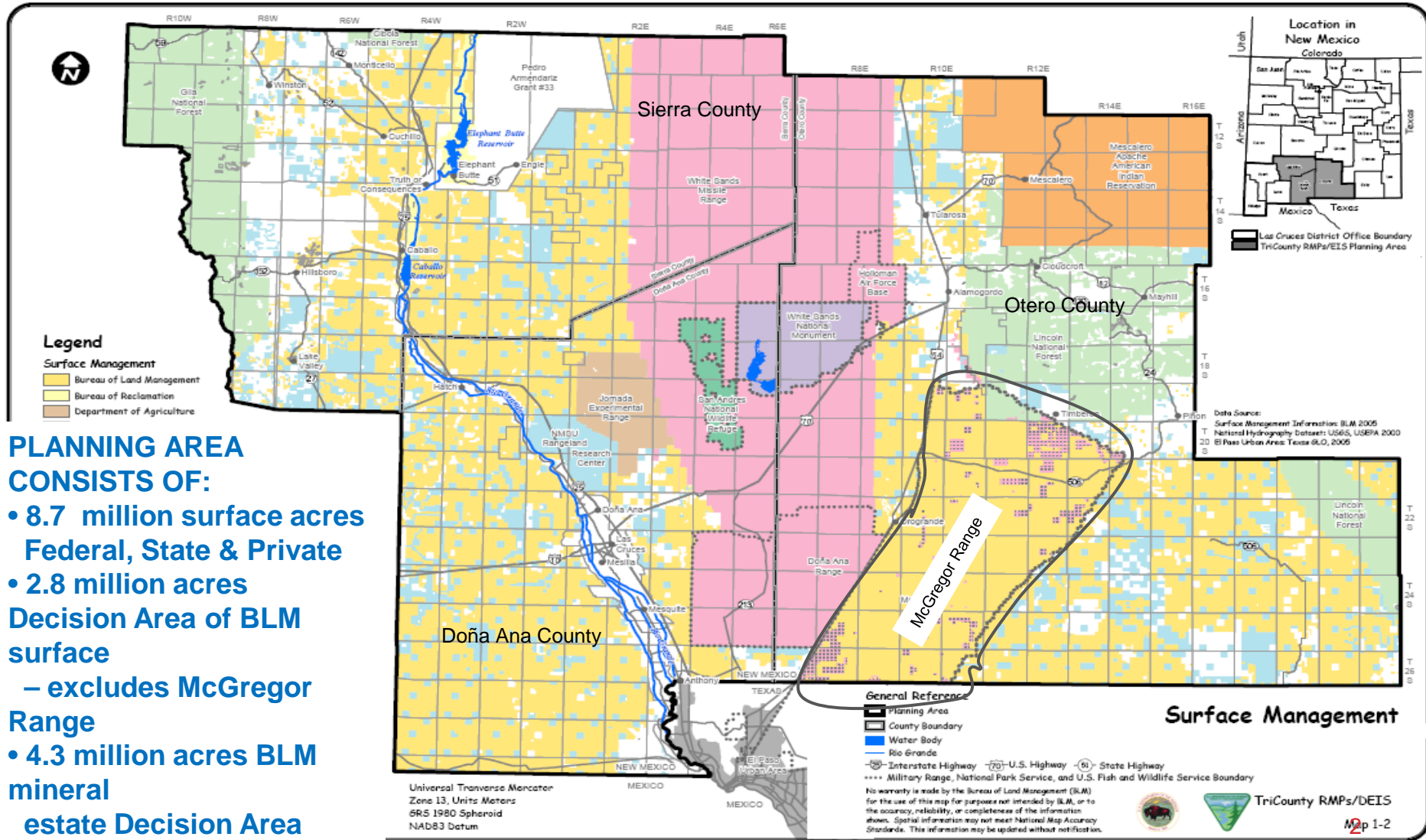


TRICOUNTY

Draft Supplemental Resource Management Plan/ Environmental Impact Statement

October 2016-Status Update to RAC

TRICOUNTY PLANNING AREA



PLANNING AREA CONSISTS OF:

- 8.7 million surface acres Federal, State & Private
- 2.8 million acres Decision Area of BLM surface
 - excludes McGregor Range
- 4.3 million acres BLM mineral estate Decision Area

Universal Transverse Mercator
 Zone 13, Units Meters
 SRS 1980 Spheroid
 NAD83 Datum

General Reference
 ■ Planning Area
 □ County Boundary
 ■ Water Body
 ■ Rio Grande
 — Interstate Highway — U.S. Highway — State Highway
 - - - Military Range, National Park Service, and U.S. Fish and Wildlife Service Boundary

No warranty is made by the Bureau of Land Management (BLM) for the use of this map for purposes not intended by BLM, or to the accuracy, reliability, or completeness of the information shown. Spatial information may not meet National Map Accuracy Standards. This information may be updated without notification.

DRAFT RMP AND EIS

- Existing RMPs
 - White Sands RMP (1986) – Sierra and Otero Counties
 - Mimbres RMP (1993) – Doña Ana, Luna, Hidalgo, and Grant Counties
- Draft TriCounty EIS issued April 2013
- Considerable public interest in including oil and gas leasing as well as improving our wilderness characteristics inventory
- Scoping for Supplemental EIS initiated December 2013

COOPERATING AGENCY & CONSULTATION

Cooperating Agencies

- City of Las Cruces
- Doña Ana County
- Sierra County
- Otero County
- NM Game & Fish
- NM Dept of Agriculture
- US Army Fort Bliss
- US Army White Sands Missile Range
- Doña Ana County SWCD



Tribes

- White Mt. Apache Tribe
- Piro-Manso-Tiwa Group

PROGRESS ON SUPPLEMENT

- RFD- Reasonable Foreseeable Development Scenario for Oil & Gas Leasing
- USGS Hydrologic Study
 - Characteristics of the Planning Area
 - Impacts of the RFD on Water Resources
- Remove the Organ Mountains-Desert Peaks from the TriCounty RMP,
- Comment Analysis of the Draft EIS Public Comments
- Scoping Report from the Supplemental EIS
- Wilderness Characteristics Inventory 85% Complete

Schedule for TriCounty RMP

Activity	Starts
Write Supplemental EIS Chapters	11/16
Cooperating Agency Review	06/17
Supplemental Draft EIS to Public Public Comment Period– 3 months	08/17
Prepare comment responses, write up Final EIS	10/17
Cooperating Agency Review of Final	2/18
Final EIS to Public	9/18
Signed Record of Decision	6/19