

Wilderness Inventory Unit Index of Documents
Dry Creek OR-034-111, 11 total pages

Page 1: Index Cover Sheet

[Page 2: Form 1 – Documentation of BLM Wilderness Inventory: Findings on Record](#)

[Page 5: Form 2 – Documentation of Current Wilderness Inventory Conditions](#)

[Page 9: Form 2 – Summary of Findings and Conclusion](#)

[Page 10: Wilderness Characteristics Overview – Dry Creek OR-034-111 Map 1 of 2](#)

[Page 11: Wilderness Characteristics-Land Treatments-Dry Creek OR-034-111 Map 2 of 2](#)

Prepared by:
U.S. Department of the Interior
Bureau of Land Management
Vale District Office
100 Oregon Street
Vale, Oregon 97918



H-6300-1-WILDERNESS INVENTORY MAINTENANCE IN BLM OREGON/WASHINGTON

APPENDIX B – INVENTORY AREA EVALUATION

Evaluation of Current Conditions:

- 1) Document and review the existing BLM wilderness inventory findings on file, if available, regarding the presence or absence of individual wilderness characteristics, using Form 1, below.
- 2) Consider relevant information regarding current conditions available in the office to identify and describe any changes to the existing information (use interdisciplinary (ID) team knowledge, aerial photographs, field observations, maps, etc.), and document your findings on Form 2, below.

When Citizen Information has been submitted regarding wilderness characteristics, document the submitted materials including: date of Submission; Name of District(s) and Field Office(s) Affected; Type of material Submitted (e.g. narrative, map, photo). Evaluate any submitted citizen information regarding the validity of proposed boundaries of the unit(s), the existence of roads and other boundary features, the size of the unit(s), and the presence or absence of wilderness characteristics based on relevant information available in the office (prior BLM inventories, ID team knowledge, aerial photographs, field observations, maps, etc.)

Conduct field reviews as necessary to verify information and to ascertain current conditions. Reach conclusions on current conditions including boundaries, size of areas and presence or absence of wilderness characteristics. Fully explain the basis for each conclusion on form 2, including any critical differences between BLM and citizen information.

Document your findings regarding current conditions for each inventoried area. Describe how the present conditions are similar to, or have changed from, the conditions documented in the original wilderness inventory. Document your findings on Form 2 for each inventory area. Cite to or attach data considered, including photographs, maps, GIS layers, field trip notes, project files, *etc.*

Year: 2009 Unit Number/Name: OR-034-111 — Dry Creek

**FORM 1 -- DOCUMENTATION OF BLM WILDERNESS INVENTORY
FINDINGS ON RECORD**

1. Is there existing BLM wilderness inventory information on all or part of this area?

Yes X No (If yes, and if more than one unit is within the area, list the names of those units.):

A.) Inventory Source(s) -- (X) Denotes all applicable BLM Inventory files, printed maps, or published BLM Decision documents with information pertaining to this unit.

Wilderness Inventories

- (X) 1978-1980 – BLM Wilderness Inventory Unit-- **In Oregon:** partially of OR-03-05-12 Rockville; **In Idaho:** ID-16-66 (unpublished BLM documents in case files)
- () April 1979 – *Wilderness -- Proposed Initial Inventory – Roadless Areas and Islands Which Clearly Do Not have Wilderness Characteristics, Oregon and Washington*

Wilderness Decision Documents

- () August 1979 – *Wilderness Review – Initial Inventory, Final Decision on Public Lands Obviously Lacking Wilderness Characteristics and Announcement of Public Lands to be Intensively Inventoried for Wilderness Characteristics, Oregon and Washington* (green document)
- (X) August 1979 – *Idaho Initial Wilderness Inventory State Director's Final Decision*
- () October 1979 – *Wilderness Review – Intensive Inventory - Oregon, Proposed Decision on the Intensive Wilderness Inventory of Selected Areas* (grey document)
- () March 1980 – *Wilderness Review – Intensive Inventory; Final Decisions on 30 Selected Units in Southeast Oregon and Proposed Decisions on Other Intensively Inventoried Units in Oregon and Washington* (orange document)
- () November 1980 - *Wilderness Inventory – Oregon and Washington, Final Intensive Inventory Decisions* (brown document)
- () November 1981 *Stateline Intensive Wilderness Inventory Final Decision, Oregon, Idaho, Nevada, Utah* (tan document)

B.) Inventory Unit Name(s)/Number(s)

In Oregon: BLM Partially of OR-03-05-12 Rockville

In Idaho: BLM ID-16-66

C.) Map Name(s)/Number(s)

- () Final Decision – Initial Wilderness Inventory Map, August 1979, Oregon
- () Proposed Decision -- Intensive Wilderness Inventory of Selected Areas Map, October 1979, Oregon
- () Intensive Wilderness Inventory Map, March 1980, Oregon
- () Intensive Wilderness Inventory --Final Decisions Map, November 1980, Oregon
- () November, 1981 *Stateline Intensive Wilderness Inventory Final Decision, Oregon, Idaho, Nevada, Utah* (tan document)

D.) BLM District(s)/Field Office(s)

Vale District/Malheur Resource Area

2. BLM Inventory Findings on Record

(Existing inventory information regarding wilderness characteristics (if more than one BLM inventory unit is associated with the area, list each unit and answer each question individually for each inventory unit):

Inventory Source: See above.

Unit#/ Name	Size (historic acres)	Natural Condition? Y/N	Outstanding Solitude? Y/N	Outstanding Primitive & Unconfined Recreation? Y/N	Supplemental Values? Y/N
Partially of OR-03-05-12 Rockville	3,280	*	*	*	*
ID-16-66	5,120	*	*	*	*
TOTAL	8,400				

* -- These criteria were not addressed during the inventory of these two units.

H-6300-1-WILDERNESS INVENTORY MAINTENANCE IN BLM OREGON/WASHINGTON

APPENDIX B – INVENTORY AREA EVALUATION

Evaluation of Current Conditions:

- 1) Document and review the existing BLM wilderness inventory findings on file, if available, regarding the presence or absence of individual wilderness characteristics, using Form 1, below.
- 2) Consider relevant information regarding current conditions available in the office to identify and describe any changes to the existing information (use interdisciplinary (ID) team knowledge, aerial photographs, field observations, maps, etc.), and document your findings on Form 2, below.

When Citizen Information has been submitted regarding wilderness characteristics, document the submitted materials including: date of Submission; Name of District(s) and Field Office(s) Affected; Type of material Submitted (e.g. narrative, map, photo). Evaluate any submitted citizen information regarding the validity of proposed boundaries of the unit(s), the existence of roads and other boundary features, the size of the unit(s), and the presence or absence of wilderness characteristics based on relevant information available in the office (prior BLM inventories, ID team knowledge, aerial photographs, field observations, maps, etc.)

Conduct field reviews as necessary to verify information and to ascertain current conditions. Reach conclusions on current conditions including boundaries, size of areas and presence or absence of wilderness characteristics. Fully explain the basis for each conclusion on form 2, including any critical differences between BLM and citizen information.

Document your findings regarding current conditions for each inventoried area. Describe how the present conditions are similar to, or have changed from, the conditions documented in the original wilderness inventory. Document your findings on Form 2 for each inventory area. Cite to or attach data considered, including photographs, maps, GIS layers, field trip notes, project files, *etc.*

FORM 2 -- DOCUMENTATION OF CURRENT WILDERNESS INVENTORY CONDITIONS

Unit Number/Name – OR-034-111 — Dry Creek

Description of Current Conditions: [Include land ownership, location, topography, vegetation features and summary of major human uses/activities.]

1. Is the unit of sufficient size?

Yes X No

Description: Refer to this unit's associated Map 1 for its location. In the late 1970's, Vale and Boise (ID) BLM Districts both conducted independent wilderness characteristics inventories which included public lands only within their respective states. With this WC inventory maintenance, the bounds of OR-034-111 unit includes contiguous roadless BLM public lands within both Vale, OR and Boise, ID Districts.

The bounds of this 7,801 acre OR-034-111 unit include 2,873 acres in Vale District and 4,928 acres in Boise District. The difference in BLM documented acreage by BLM districts between the late 1970's and presently is due to the increased accuracy of measuring tools available to the agency since the late 1970's.

OR-034-111's boundary components within Vale District consists of Malheur County road 3206 on its south end, a road traversing public lands and a private land parcel on its west side and Malheur County 816 (McBride Creek) road on its north end. Within the Boise District the unit's boundary consists of a continuing road into Idaho that is associated with Malheur County's 3206 road on the unit's southwest side; U.S Highway 95's right-of-way, a State parcel, and an Owyhee County road on the unit's east side; and the same Owyhee County road on the unit's north side (and which is associated with a continuance with Malheur County's 816 road). The BLM and county roads in Vale District receive mechanical maintenance as needed to ensure their ability to provide for relatively regular and continuous use. However, the unit's area within Vale District does not – of itself -- meet any size criteria of wilderness characteristics.

2. Is the unit in a natural condition?

Yes No X N/A

Description: To date, Vale District has received no data from the Boise District about human imprints present within the unit in Idaho. Respectively, no determination on natural condition can be established in this document for that portion of the unit located in Boise District.

Although the unit's area within Vale District (2,873 acres) does not meet any size criteria for wilderness characteristics, the following is provided regarding natural conditions within Vale District. Vegetation within the area is predominately a mix of non-native and native grasses and sagebrush. The area's southern approximate two-thirds within Vale District is more so characterized by low profiled rolling terrain of shallow drainages flowing predominately north toward Dry Creek; north of this creek the rolling terrain drains mostly to the northwest toward McBride Creek. The area's elevations within Vale District of the unit range from 3,941 to 4,357 feet.

Refer to this unit's associated Map 1 and Map 2 for human imprints in Vale District. There are 7.9 miles of rangeland fence (including 4.0 miles on the State boundary), 2.3 miles of 2 motorized primitive trails (MPTs), 2.9 miles of one buried water pipeline system with 5 trough sites, 1 spring, and 2 earthen reservoirs. Most of a 1964 drilled disc seeding of non-native grasses covering the entire unit within Vale District still remains visually apparent with the appearance of contrasting linear lines of disc-seeded vegetation. Thus, in Vale District, to the average visitor the unit does not appear to be in a natural condition.

In summary, due to the above described circumstances, OR034-111 within Vale District appears to not be affected primarily by the forces of nature with the imprint of humans being substantially unnoticeable to the average visitor.

3. Does the unit have outstanding opportunities for solitude?

Yes _____ No X N/A _____

Description: To date, Vale District has received no data from the Boise District about opportunities for solitude within the unit in Idaho. Respectively, no determination on solitude can be established in this document for that portion of the unit located in Boise District.

Although the unit's area within Vale District (2,873 acres) does not meet any size or natural condition criteria for wilderness characteristics, the following is provided regarding solitude within Vale District. The area's low profile vegetation is insufficient to provide adequate screening to support an outstanding opportunity for solitude. The area's dimensions are approximately 3.5 miles in length and 0.75 to 1.5 miles wide. From the area's south boundary road and the OR/ID State line, the terrain drops toward the unit's west boundary road. The low profiled rolling terrain of the unit, combined with the narrow configuration of the area and its size within Vale District, does not provide sufficient topographic separation –with or without vegetative screening -- to possess outstanding opportunities for solitude.

4. Does the unit have outstanding opportunities for primitive and unconfined recreation?Yes _____ No X N/A _____

Description: To date, Vale District has received no data from the Boise District about opportunities for primitive and unconfined recreation within the unit in Idaho. Respectively, no determination on recreation can be established in this document for that portion of the unit located in Boise District.

Although the unit's area within Vale District (2,873 acres) does not meet any size or natural condition criteria for wilderness characteristics, the following is provided regarding primitive and unconfined recreation within Vale District. The primary recreation activity within the area is hunting of common game species (deer, chukar, some antelope) and associated day hiking. Horseback riding and general sightseeing, while available, are not actively pursued by most visitors. The area does not possess any unique, special or rare resource values which would more so draw recreating visitors to it. The unit's area within Vale District does not have outstanding opportunities for primitive and unconfined recreation.

5. Does the unit have supplemental values?Yes X No _____ N/A _____

Description: Within the Vale District, there are 4 sites -- proximate to each other -- of barren milkvetch. The plant is a BLM special status species in Oregon.

Summary of Findings and Conclusion

Unit Name and Number: OR-034-111 — Dry Creek (within Vale District)

Summary Results of Analysis:

1. Does the area meet any of the size requirements? X* Yes No
 * -- within Vale and Boise Districts combined. However, the unit does not meet any size criteria independently within the Vale District portion of the unit.

2. Does the area appear to be natural? Yes X No

3. Does the area offer outstanding opportunities for solitude or a primitive and unconfined type of recreation? Yes X No NA

4. Does the area have supplemental values? X Yes No NA

Conclusion -- check one:

- The area, or a portion of the area – within Vale District -- has wilderness character.
 X The area – within Vale District -- does not have wilderness character.

Prepared by: Robert Alward
 Robert Alward, Wilderness Planner contractor, Vale District

Team Members:

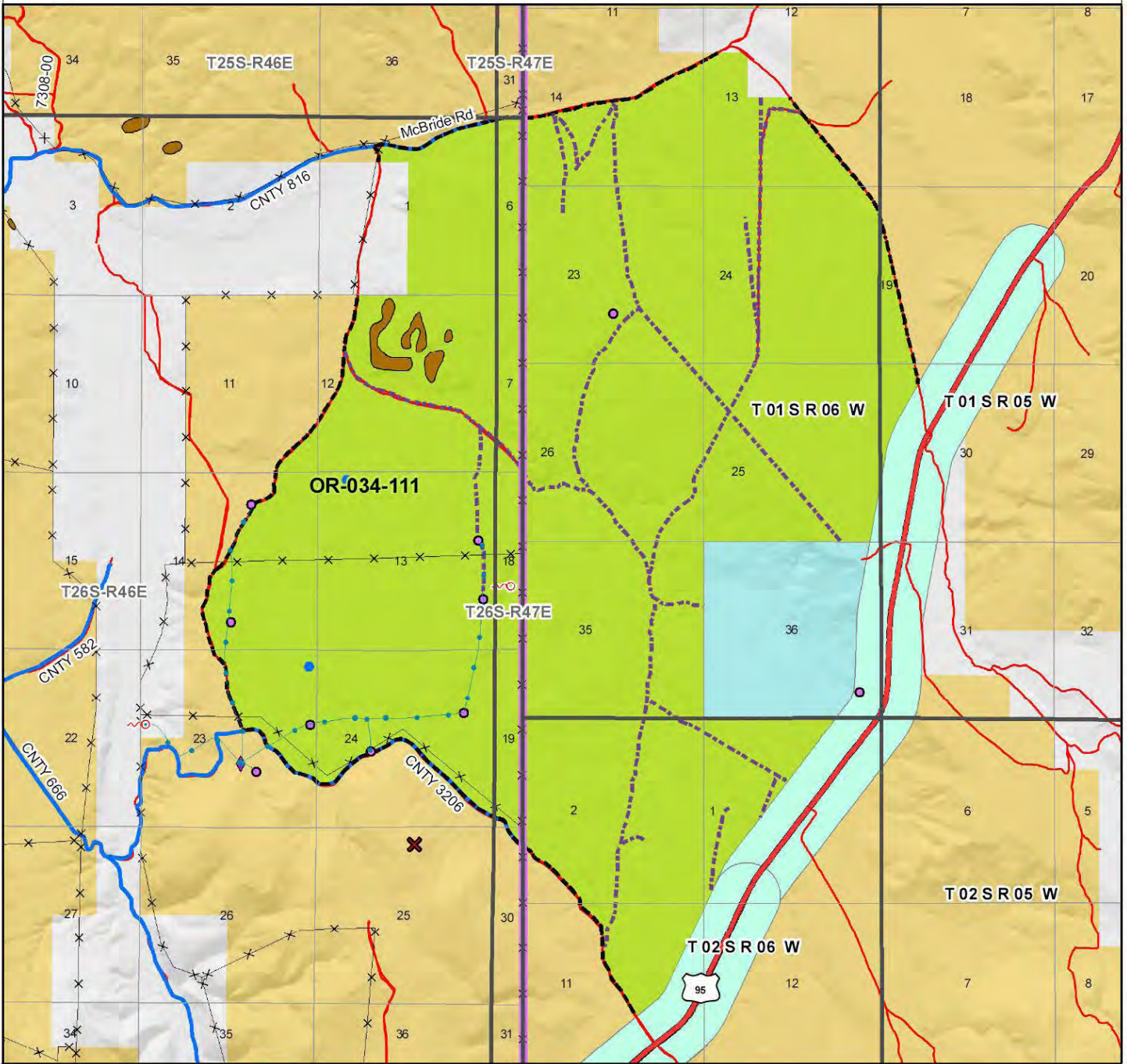
<u>Mitch Thomas</u>	<u>2/4/10</u>
Mitch Thomas, Rangeland Management Specialist, Vale District	Date
<u>Gillian Wigglesworth</u>	<u>2/5/10</u>
Gillian Wigglesworth, Botanist, Vale District	Date
<u>Shaney Rockefeller</u>	<u>3/10/10</u>
Shaney Rockefeller, Soil Scientist, Vale District	Date
<u>Michelle Caviness</u>	<u>2/23/10</u>
Michelle Caviness, Wildlife Biologist, Vale District	Date
<u>Eian Ray</u>	<u>02/09/10</u>
Eian Ray, GIS Specialist, contractor, Vale District	Date
<u>Brent Grasty</u>	<u>2/9/10</u>
Brent Grasty, GIS Coordinator, Vale District	Date

Approved by: Pat Ryan 7/11/10
 Pat Ryan, Malheur Resource Area Field Manager, Vale District Date

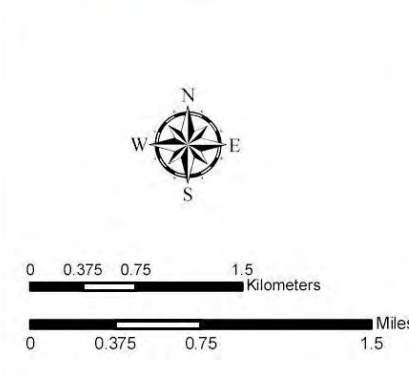
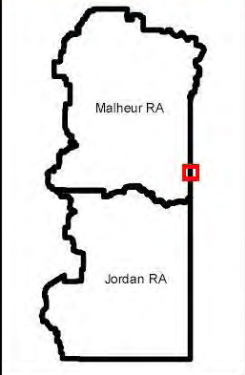
This form documents information that constitutes an inventory finding on wilderness characteristics. It does not represent a formal land use allocation or a final agency decision subject to administrative remedies under either 43 CFR parts 4 or 1610.5-2.

Wilderness Characteristics - Overview

Dry Creek - OR-034-111 - Map 1 of 2



Legend	
	Developed Spring
	Wildlife Guzzler
	Earthen Reservoir
	Pipeline
	Trough
	Fence
	Storage Tank
	Surface Mining Disturbance
	Sage Grouse Lek
	Special Status Plant
	BLM Wild Char Inventory Unit
	Wilderness Study Area
	Mineral Material Site
	Road/Utility Right-of-Way
	Major Water Body
	Route Types - BLM Determination
	Boundary Road
	Motorized Primitive Trail (MPT)
	Discontinued Use
	Routes - Outside Wild Char Unit
	County
	Major Highway
	BLM Numbered & Other Routes
	Land Ownership
	Bureau of Land Management
	State
	Private
	Other Federal Land
	District Boundary
	District Boundary



U.S. DEPARTMENT OF THE INTERIOR
BUREAU OF LAND MANAGEMENT

VALE DISTRICT
December 21, 2009

No warranty is made by the Bureau of Land Management as to the accuracy, reliability, or completeness of these data for individual or aggregate use with other data. Original data were compiled from various sources. This information may not meet National Map Accuracy Standards. This product was developed through digital means and may be updated without notification.

--FINAL--

