

Wilderness Inventory Unit Index of Documents
Dry Buttes OR-034-077, 10 total pages

Page 1: Index Cover Sheet

[Page 2: Form 1 – Documentation of BLM Wilderness Inventory: Findings on Record](#)

[Page 5: Form 2 – Documentation of Current Wilderness Inventory Conditions](#)

[Page 8: Form 2 – Summary of Findings and Conclusion](#)

[Page 9: Wilderness Characteristics Overview – Dry Buttes Or-034-077 Map 1 of 2](#)

[Page 10: Wilderness Characteristics-Land Treatments-Dry Buttes OR-034-077 Map 2 of 2](#)

Prepared by:
U.S. Department of the Interior
Bureau of Land Management
Vale District Office
100 Oregon Street
Vale, Oregon 97918



H-6300-1-WILDERNESS INVENTORY MAINTENANCE IN BLM OREGON/WASHINGTON

APPENDIX B – INVENTORY AREA EVALUATION

Evaluation of Current Conditions:

- 1) Document and review the existing BLM wilderness inventory findings on file, if available, regarding the presence or absence of individual wilderness characteristics, using Form 1, below.
- 2) Consider relevant information regarding current conditions available in the office to identify and describe any changes to the existing information (use interdisciplinary (ID) team knowledge, aerial photographs, field observations, maps, etc.), and document your findings on Form 2, below.

When Citizen Information has been submitted regarding wilderness characteristics, document the submitted materials including: date of Submission; Name of District(s) and Field Office(s) Affected; Type of material Submitted (e.g. narrative, map, photo). Evaluate any submitted citizen information regarding the validity of proposed boundaries of the unit(s), the existence of roads and other boundary features, the size of the unit(s), and the presence or absence of wilderness characteristics based on relevant information available in the office (prior BLM inventories, ID team knowledge, aerial photographs, field observations, maps, etc.)

Conduct field reviews as necessary to verify information and to ascertain current conditions. Reach conclusions on current conditions including boundaries, size of areas and presence or absence of wilderness characteristics. Fully explain the basis for each conclusion on form 2, including any critical differences between BLM and citizen information.

Document your findings regarding current conditions for each inventoried area. Describe how the present conditions are similar to, or have changed from, the conditions documented in the original wilderness inventory. Document your findings on Form 2 for each inventory area. Cite to or attach data considered, including photographs, maps, GIS layers, field trip notes, project files, *etc.*

Year: 2010 Unit Number/Name: OR-034-077 -- Dry Buttes

FORM 1 -- DOCUMENTATION OF BLM WILDERNESS INVENTORY FINDINGS ON RECORD

1. Is there existing BLM wilderness inventory information on all or part of this area?

Yes X No _____ (If yes, and if more than one unit is within the area, list the names of those units.):

A.) Inventory Source(s) -- (X) Denotes all applicable BLM Inventory files, printed maps, or published BLM Decision documents with information pertaining to this unit.

Wilderness Inventories

- (X) 1979 – BLM Wilderness Inventory Unit 3-43 Crowley Creek of OR-03-03-15 (unpublished BLM documents in case files)
- (X) April 1979 – *Wilderness -- Proposed Initial Inventory – Roadless Areas and Islands Which Clearly Do Not have Wilderness Characteristics, Oregon and Washington*

Wilderness Decision Documents

- (X) August 1979 – *Wilderness Review – Initial Inventory, Final Decision on Public Lands Obviously Lacking Wilderness Characteristics and Announcement of Public Lands to be Intensively Inventoried for Wilderness Characteristics, Oregon and Washington* (green document)
- () October 1979 – *Wilderness Review – Intensive Inventory - Oregon, Proposed Decision on the Intensive Wilderness Inventory of Selected Areas* (grey document)
- () March 1980 – *Wilderness Review – Intensive Inventory; Final Decisions on 30 Selected Units in Southeast Oregon and Proposed Decisions on Other Intensively Inventoried Units in Oregon and Washington* (orange document)
- () November 1980 - *Wilderness Inventory – Oregon and Washington, Final Intensive Inventory Decisions* (brown document)
- () November 1981 *Stateline Intensive Wilderness Inventory Final Decision, Oregon, Idaho, Nevada, Utah* (tan document)

B.) Inventory Unit Name(s)/Number(s)

BLM 3-43 Crowley Creek of OR-03-03-15

C.) Map Name(s)/Number(s)

- (X) Final Decision – Initial Wilderness Inventory Map, August 1979, Oregon
- () Proposed Decision -- Intensive Wilderness Inventory of Selected Areas Map, October 1979, Oregon
- () Intensive Wilderness Inventory Map, March 1980, Oregon
- () Intensive Wilderness Inventory --Final Decisions Map, November 1980, Oregon
- () November, 1981 *Stateline Intensive Wilderness Inventory Final Decision, Oregon, Idaho, Nevada, Utah* (tan document)

D.) BLM District(s)/Field Office(s)

Vale District/ Malheur Field Office

2. BLM Inventory Findings on Record

(Existing inventory information regarding wilderness characteristics (if more than one BLM inventory unit is associated with the area, list each unit and answer each question individually for each inventory unit):

Inventory Source: See above.

Unit#/ Name	Size (historic acres)	Natural Condition? Y/N	Outstanding Solitude? Y/N	Outstanding Primitive & Unconfined Recreation? Y/N	Supplemental Values? Y/N
3-43 Crowley Creek of OR-03-03-15	5,240	N	*	*	*
TOTAL	5,240				

*-- These criteria were not addressed during the inventory of this unit since it was determined the unit did not meet natural condition criteria.

H-6300-1-WILDERNESS INVENTORY MAINTENANCE IN BLM OREGON/WASHINGTON

APPENDIX B – INVENTORY AREA EVALUATION

Evaluation of Current Conditions:

- 1) Document and review the existing BLM wilderness inventory findings on file, if available, regarding the presence or absence of individual wilderness characteristics, using Form 1, below.
- 2) Consider relevant information regarding current conditions available in the office to identify and describe any changes to the existing information (use interdisciplinary (ID) team knowledge, aerial photographs, field observations, maps, etc.), and document your findings on Form 2, below.

When Citizen Information has been submitted regarding wilderness characteristics, document the submitted materials including: date of Submission; Name of District(s) and Field Office(s) Affected; Type of material Submitted (e.g. narrative, map, photo). Evaluate any submitted citizen information regarding the validity of proposed boundaries of the unit(s), the existence of roads and other boundary features, the size of the unit(s), and the presence or absence of wilderness characteristics based on relevant information available in the office (prior BLM inventories, ID team knowledge, aerial photographs, field observations, maps, etc.)

Conduct field reviews as necessary to verify information and to ascertain current conditions. Reach conclusions on current conditions including boundaries, size of areas and presence or absence of wilderness characteristics. Fully explain the basis for each conclusion on form 2, including any critical differences between BLM and citizen information.

Document your findings regarding current conditions for each inventoried area. Describe how the present conditions are similar to, or have changed from, the conditions documented in the original wilderness inventory. Document your findings on Form 2 for each inventory area. Cite to or attach data considered, including photographs, maps, GIS layers, field trip notes, project files, *etc.*

FORM 2 -- DOCUMENTATION OF CURRENT WILDERNESS INVENTORY CONDITIONS

Unit Number/Name: OR-034-077 -- Dry Buttes

Description of Current Conditions: [Include land ownership, location, topography, vegetation features and summary of major human uses/activities.]

1. Is the unit of sufficient size?

Yes X No _____

Description: Refer to the unit's associated Map 1 for its location. The unit has 6,056 acres of public land. The unit's boundaries are nearly the same as the late 1970's BLM wilderness characteristics inventory. A route in the southwest sector of the area has changed from a motorized primitive trail to a road since the 1979 inventory. Improved mapping tools distinguish the increase of acreage in this current unit. The unit's boundaries are private parcels and County roads 513 and 578 on its west side, private parcels and County roads 514 and 576 on its north and east sides, and County road 3644 on its south side. Boundary roads are mechanically maintained as required to allow for relatively regular and continuous use.

2. Is the unit in a natural condition?

Yes X No _____ N/A _____

Description: Elevations range from about 4,580 to 5,400 feet. Just west of the center of the unit is the moderate to steep-sloped Dry Buttes feature. From this landmark are south-southwest draining shallow side drainages of Crowley Creek, a very low profiled drainage passing through the extreme southwest corner of the unit. Radiating elsewhere from the Buttes are even shallower channels, with the majority of the unit consisting of very low rolling to nearly flat terrain. The vegetation consists predominately of native grasses and sagebrush.

Refer to the unit's associated Map 1 and Map 2 for human imprints. There is 6.8 miles of 5 motorized primitive trails (MPTs), two which connect to dissect the unit through near its middle north-to-south; one of these two also stems to the top of Dry Buttes. There are also 6.6 miles of rangeland fence and 3 earthen reservoirs in the inventory unit. There remains nominal visual evidence of some highly dispersed incidental cross-country travel by motorized vehicles located in the eastern half of the unit. There remains no visually contrasting appearance of a 1965 chemical brush control project, or of a 2007 broadcast native grasses seeding, both located within the western-most area of the northwest sector of the unit. The types of developments and the locations of most of them are such that the unit appears to be affected primarily by the forces of nature with the imprints of humans

substantially unnoticeable to the average visitor. The consensus of the present BLM Vale District interdisciplinary team differs from the district's late 1970's inventory finding which concluded that the imprint of man's work was substantially noticeable throughout the area.

3. Does the unit have outstanding opportunities for solitude?

Yes _____ No X N/A _____

Description: There is insufficient density and/or height of vegetation to adequately screen visitors to have outstanding opportunities for solitude. While the unit's configuration provides for visitors to experience a sense of being isolated in certain locations within the unit, there exists no outstanding opportunities due to the predominately very low topographic profile of most of the unit. Where the relief is most pronounced (associated largely with the southern slopes of Dry Buttes), it is not sufficiently distant from the unit's south boundary road and southwest boundary features to provide settings for outstanding opportunities for solitude. The unit does not have outstanding opportunities for solitude.

4. Does the unit have outstanding opportunities for primitive and unconfined recreation?

Yes _____ No X N/A _____

Description: Primary recreation opportunities within the area include hunting of common game species (primarily deer, pronghorn and chukar) and hiking. There are no unique or special features which would specifically draw recreating visitors to the unit. The area does not have outstanding opportunities for primitive and unconfined recreation.

5. Does the unit have supplemental values?

Yes X No _____ N/A _____

Description: One sage grouse lek -- a BLM special status animal species -- has been documented within the unit.

Summary of Findings and Conclusion

Unit Name and Number: OR-034-077 -- Dry Buttes

Summary Results of Analysis:

- 1. Does the area meet any of the size requirements? Yes No
- 2. Does the area appear to be natural? Yes No
- 3. Does the area offer outstanding opportunities for solitude or a primitive and unconfined type of recreation? Yes No NA
- 4. Does the area have supplemental values? Yes No NA

Conclusion -- check one:

- The area, or a portion of the area, has wilderness character.
- The area does not have wilderness character.

Prepared by: Robert Alward
Robert Alward, Wilderness Planner contractor

Team Members:

<u>Steve Christensen</u>	<u>12-6-2010</u>
Steve Christensen, Rangeland Management Specialist	Date
<u>Dan Thomas</u>	<u>12-12-2010</u>
Dan Thomas, Range Technician	Date
<u>Lynn Silva</u>	<u>12/6/10</u>
Lynn Silva, Weed Coordinator	Date
<u>Gillian Wigglesworth</u>	<u>12/6/10</u>
Gillian Wigglesworth, Botanist	Date
<u>Michelle Caviness</u>	<u>12/10/10</u>
Michelle Caviness, Wildlife Biologist	Date
<u>Eian Ray</u>	<u>12-6-10</u>
Eian Ray, GIS Specialist, contractor	Date
<u>Brent Grasty</u>	<u>12/9/10</u>
Brent Grasty, GIS Coordinator	Date

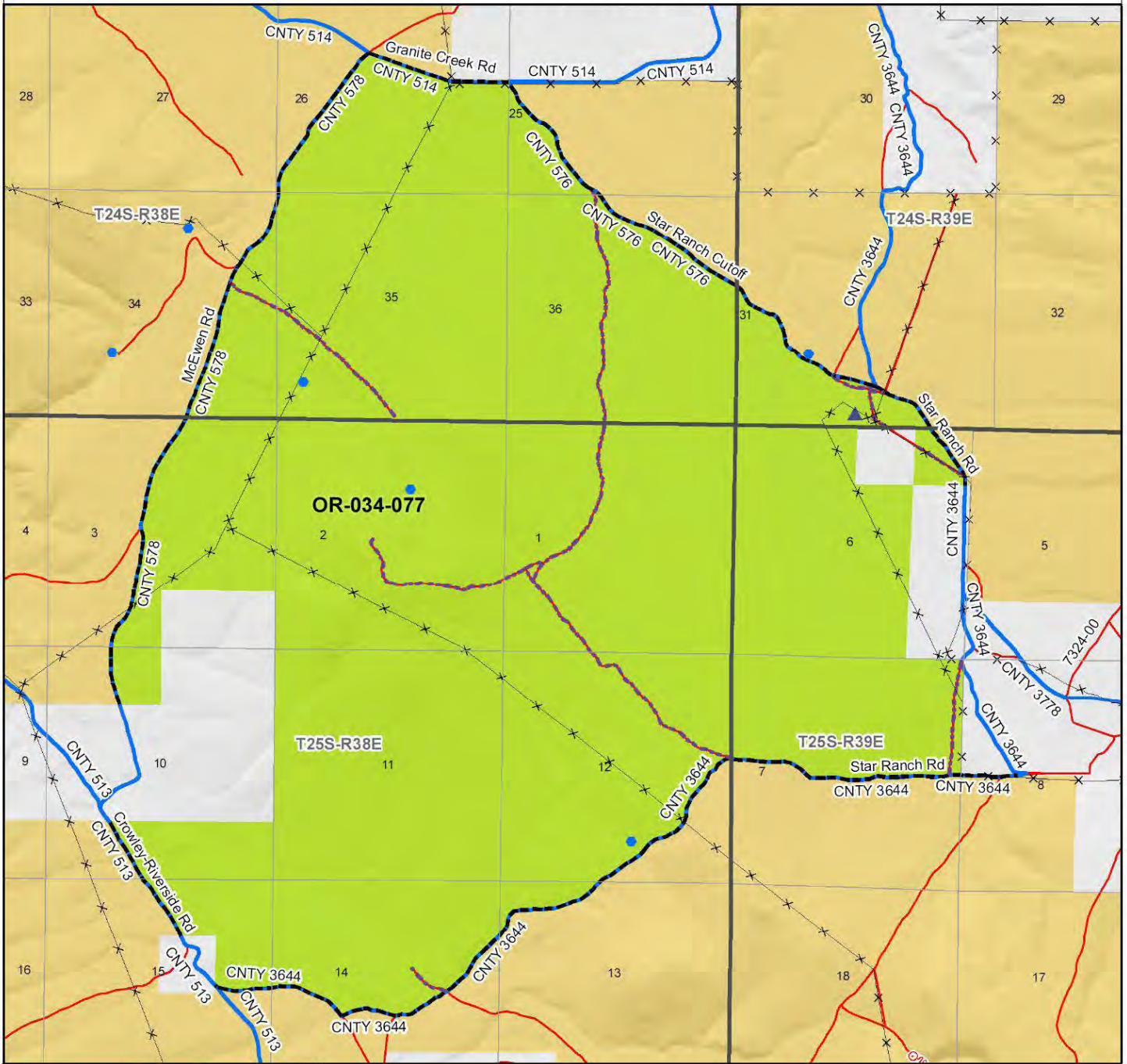
Approved by:

Pat Ryan 6/17/11
Pat Ryan, Malheur Resource Area Field Manager Date

This form documents information that constitutes an inventory finding on wilderness characteristics. It does not represent a formal land use allocation or a final agency decision subject to administrative remedies under either 43 CFR parts 4 or 1610.5-2.

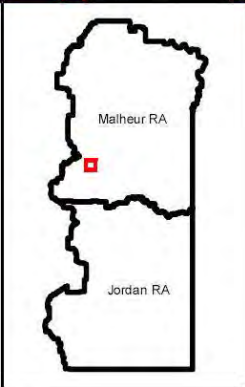
Wilderness Characteristics - Overview

Dry Buttes - OR-034-077 - Map 1 of 2



Legend

Developed Spring	Route Types - BLM Determination
Wildlife Guzzler	Boundary Road
Earthen Reservoir	Motorized Primitive Trail (MPT)
Pipeline	Discontinued Use
Trough	Routes - Outside Wild Char Unit
Fence	County
Storage Tank	Major Highway
Surface Mining Disturbance	BLM Numbered & Other Routes
Sage Grouse Lek	Land Ownership
Special Status Plant	Bureau of Land Management
BLM Wild Char Inventory Unit	State
Wilderness Study Area	Private
Mineral Material Site	Other Federal Land
Road/Utility Right-of-Way	
Major Water Body	



0 0.25 0.5 1 Kilometers

0 0.25 0.5 1 Miles

U.S. DEPARTMENT OF THE INTERIOR
BUREAU OF LAND MANAGEMENT



VALE DISTRICT
September 21, 2010

No warranty is made by the Bureau of Land Management as to the accuracy, reliability, or completeness of these data for individual or aggregate use with other data. Original data were compiled from various sources. This information may not meet National Map Accuracy Standards. This product was developed through digital means and may be updated without notification.

--FINAL--

