

Wilderness Inventory Unit Index of Documents  
**DeArmond Mountain OR-034-012, 35 total pages**

Page 1: Index Cover Sheet

[Page 2: Form 1 – Documentation of BLM Wilderness Inventory: Findings on Record](#)

[Page 5: Form 2 – Documentation of Current Wilderness Inventory Conditions](#)

[Page 12: Form 2 – Summary of Findings and Conclusion](#)

[Page 13: Wilderness Characteristics Overview–DeArmond Mountain OR-034-012 Map 1 of 2](#)

[Page 14: Wilderness Characteristics-Land Treatments-DeArmond Mountain OR-034-012 Map 2 of 2](#)

[Page 15: Wilderness Characteristics–BLM Photo Points–DeArmond Mountain Map](#)

[Page 16: Wilderness Characteristics–BLM Photo Points–DeArmond Mountain Log page 1](#)

[Page 17: Wilderness Characteristics–BLM Photo Points–DeArmond Mountain Log page 2](#)

[Page 18: OR-034-012 DeArmond Mountain BLM Photos](#)

[Page 32: H-6300-1-Wilderness Inventory Maintenance in BLM Oregon/Washington  
Appendix C – Road\\* Analysis: 7352-00 and 7254-00](#)

**Prepared by:**  
**U.S. Department of the Interior**  
**Bureau of Land Management**  
**Vale District Office**  
**100 Oregon Street**  
**Vale, Oregon 97918**



## **H-6300-1-WILDERNESS INVENTORY MAINTENANCE IN BLM OREGON/WASHINGTON**

### **APPENDIX B – INVENTORY AREA EVALUATION**

#### **Evaluation of Current Conditions:**

- 1) Document and review the existing BLM wilderness inventory findings on file, if available, regarding the presence or absence of individual wilderness characteristics, using Form 1, below.
- 2) Consider relevant information regarding current conditions available in the office to identify and describe any changes to the existing information (use interdisciplinary (ID) team knowledge, aerial photographs, field observations, maps, etc.), and document your findings on Form 2, below.

When Citizen Information has been submitted regarding wilderness characteristics, document the submitted materials including: date of Submission; Name of District(s) and Field Office(s) Affected; Type of material Submitted (e.g. narrative, map, and photos). Evaluate any submitted citizen information regarding the validity of proposed boundaries of the unit(s), the existence of roads and other boundary features, the size of the unit(s), and the presence or absence of wilderness characteristics based on relevant information available in the office (prior BLM inventories, ID team knowledge, aerial photographs, field observations, maps, etc.)

Conduct field reviews as necessary to verify information and to ascertain current conditions. Reach conclusions on current conditions including boundaries, size of areas and presence or absence of wilderness characteristics. Fully explain the basis for each conclusion on form 2, including any critical differences between BLM and citizen information.

Document your findings regarding current conditions for each inventoried area. Describe how the present conditions are similar to, or have changed from, the conditions documented in the original wilderness inventory. Document your findings on Form 2 for each inventory area. Cite to or attach data considered, including photographs, maps, GIS layers, field trip notes, project files, *etc.*

Year: 2010 Unit Number/Name: OR-034-012 — DeArmond Mountain

**FORM 1 -- DOCUMENTATION OF BLM WILDERNESS  
INVENTORY FINDINGS ON RECORD**

**1. Is there existing BLM wilderness inventory information on all or part of this area?**

Yes X No \_\_\_\_\_ (If yes, and if more than one unit is within the area, list the names of those units.):

**A.) Inventory Source(s) -- (X) Denotes all applicable BLM Inventory files, printed maps, or published BLM Decision documents with information pertaining to this unit.**

**Wilderness Inventories**

- (X) 1978-1980 – BLM Wilderness Inventory Unit 3-6 DeArmond Mountain of OR-03-02-05 (unpublished BLM document in case file)
- ( ) April 1979 – *Wilderness -- Proposed Initial Inventory – Roadless Areas and Islands Which Clearly Do Not have Wilderness Characteristics, Oregon and Washington*
- (X) August 2007 – Vale District wilderness characteristics inventory maintenance for the *North Fork Malheur Geographic Management Area – Range Health Project*. Unit 3-4012, DeArmond Mountain (BLM documents in case files)

**Wilderness Decision Documents**

- ( ) August 1979 – *Wilderness Review – Initial Inventory, Final Decision on Public Lands Obviously Lacking Wilderness Characteristics and Announcement of Public Lands to be Intensively Inventoried for Wilderness Characteristics, Oregon and Washington* (green document)
- ( ) October 1979 – *Wilderness Review – Intensive Inventory - Oregon, Proposed Decision on the Intensive Wilderness Inventory of Selected Areas* (grey document)
- ( ) March 1980 – *Wilderness Review – Intensive Inventory; Final Decisions on 30 Selected Units in Southeast Oregon and Proposed Decisions on Other Intensively Inventoried Units in Oregon and Washington* (orange document)
- ( ) November 1980 - *Wilderness Inventory – Oregon and Washington, Final Intensive Inventory Decisions* (brown document)
- ( ) November 1981 *Stateline Intensive Wilderness Inventory Final Decision, Oregon, Idaho, Nevada, Utah* (tan document)
- (X) August 2007 - BLM Vale District North Fork Malheur Geographic Management Area -- Wilderness Characteristic Inventory Maintenance.
- (X) June 2007 -- North Fork Malheur Geographic Management Area, BLM Vale District -- Wilderness Characteristics Inventory Maintenance; DeArmond Mountain, 3-4012.

**B.) Inventory Unit Name(s)/Number(s)**

BLM 3-6 DeArmond Mountain of OR-03-02-05 (1980); Unit 3-4012, DeArmond Mountain (2007)

**C.) Map Name(s)/Number(s)**

- ( ) Final Decision – Initial Wilderness Inventory Map, August 1979, Oregon
- ( ) Proposed Decision -- Intensive Wilderness Inventory of Selected Areas Map, October 1979, Oregon
- ( ) Intensive Wilderness Inventory Map, March 1980, Oregon
- ( ) Intensive Wilderness Inventory --Final Decisions Map, November 1980, Oregon
- ( ) November, 1981 *Stateline Intensive Wilderness Inventory Final Decision, Oregon, Idaho, Nevada, Utah* (tan document)
- (X) June 2007 -- North Fork Malheur Geographic Management Area, BLM Vale District -- Wilderness Characteristics Inventory Maintenance; DeArmond Mountain, 3-4012.

**D.) BLM District(s)/Field Office(s)**

Vale District/Malheur Resource Area

**2. BLM Inventory Findings on Record**

(Existing inventory information regarding wilderness characteristics (if more than one BLM inventory unit is associated with the area, list each unit and answer each question individually for each inventory unit):

**Inventory Source:** See above.

<b>Unit#/Name</b>	<b>Size (historic acres)</b>	<b>Natural Condition? Y/N</b>	<b>Outstanding Solitude? Y/N</b>	<b>Outstanding Primitive &amp; Unconfined Recreation? Y/N</b>	<b>Supplemental Values? Y/N</b>
<b>11/1980 finding:</b> 3-6 DeArmond Mountain of OR-03-02-05	45,510	N	Y	Y	*
<b>8/2/2007 finding:</b> 3-4012, DeArmond Mountain	43,805	N	Y	Y	Y
<b>TOTAL</b>	(see above)				

\* -- This criteria was not addressed during the inventory of this unit.

## **H-6300-1-WILDERNESS INVENTORY MAINTENANCE IN BLM OREGON/WASHINGTON**

### **APPENDIX B – INVENTORY AREA EVALUATION**

#### **Evaluation of Current Conditions:**

- 1) Document and review the existing BLM wilderness inventory findings on file, if available, regarding the presence or absence of individual wilderness characteristics, using Form 1, below.
- 2) Consider relevant information regarding current conditions available in the office to identify and describe any changes to the existing information (use interdisciplinary (ID) team knowledge, aerial photographs, field observations, maps, etc.), and document your findings on Form 2, below.

When Citizen Information has been submitted regarding wilderness characteristics, document the submitted materials including: date of Submission; Name of District(s) and Field Office(s) Affected; Type of material Submitted (e.g. narrative, map, photo). Evaluate any submitted citizen information regarding the validity of proposed boundaries of the unit(s), the existence of roads and other boundary features, the size of the unit(s), and the presence or absence of wilderness characteristics based on relevant information available in the office (prior BLM inventories, ID team knowledge, aerial photographs, field observations, maps, etc.)

Conduct field reviews as necessary to verify information and to ascertain current conditions. Reach conclusions on current conditions including boundaries, size of areas and presence or absence of wilderness characteristics. Fully explain the basis for each conclusion on form 2, including any critical differences between BLM and citizen information.

Document your findings regarding current conditions for each inventoried area. Describe how the present conditions are similar to, or have changed from, the conditions documented in the original wilderness inventory. Document your findings on Form 2 for each inventory area. Cite to or attach data considered, including photographs, maps, GIS layers, field trip notes, project files, *etc.*

## **FORM 2 -- DOCUMENTATION OF CURRENT WILDERNESS INVENTORY CONDITIONS**

**Unit Number/Name: OR-034-012 — DeArmond Mountain**

**NOTE:** In February, 2004, the Vale District received from Oregon Natural Desert Association (ONDA) its evaluation of wilderness characteristics for what ONDA names its 67,783 acre “Lake Ridge proposed WSA”. For reference, a hard copy of ONDA’s proposal is retained in this unit’s file. Information provided by ONDA’s proposal was considered and incorporated as appropriate for this BLM Wilderness Characteristics Inventory maintenance. OR-034-012 is only a portion of ONDA’s much larger proposed WSA. ONDA’s proposal includes about two-thirds of this current BLM OR-034-012 inventory unit, all of three other current BLM wilderness characteristics (WC) units which meet size criteria (OR-034-003, OR-034-010 and OR-034-011), and, lastly, a tract of public land which does not meet size criteria (what was BLM’s 2007 WC unit 3-4002 Calf Creek).

Relative to BLM unit OR-034-012, there are a few primary differences between BLM and ONDA regarding inventory unit boundary features (refer to the BLM Photo Points Map/Log for OR-034-012).

-- Unlike ONDA’s proposed WSA, BLM concludes that ONDA’s routes WF3a (BLM’s 7352-00) and WF3b (BLM’s 7354-00) are – being contiguous with each other and combined -- a road, and not what ONDA identifies as a vehicular way (what BLM presently terms a motorized primitive trail [MPT] for this wilderness characteristics inventory maintenance). This combined road route segment is part of OR-034-012’s east boundary.

-- ONDA identifies its WF3c/WF3d – contiguous with each other -- as a cherry-stem road; BLM also identifies the segments as road and contiguous with each other; however, unlike ONDA, BLM identifies it as a continuing segment of the 7354-00 road which serves as OR-034-012’s east boundary.

-- ONDA has the identifier WF15a depicted on the map of its proposed WSA on two separate routes. For both, ONDA depicts the routes as a road: (1) one is associated with ONDA photo point PB50 – on the BLM Pole Creek Road (7369-00) - which is part of ONDA’s outlying east boundary for its proposed WSA (but is also far removed to the east from the east boundary of this BLM inventory unit OR-034-012) (note: BLM concurs that this route segment is a road); and (2) the other location of WF15a, which ONDA depicts on its map of its Lake Ridge proposed WSA as a cherry-stem road (but is outside of its proposed WSA). However, this second ONDA WF15a route is directly associated with BLM’s current OR-034-012 unit (located in this BLM inventory unit’s southwest sector -- and is BLM-identified as 034-RT74. ONDA depicts the route as a cherry-stem road on its Lake Ridge proposed WSA map, but has no other documentation (text, route log or photos) submitted to BLM regarding this route (given that it is outside of/not directly associated with its proposed Lake Ridge proposed WSA). BLM presently does not

concur with ONDA that this second WB15a route is a cherry-stem road, but rather a MPT (also see under size criteria, below, for additional discussion of this BLM route 034-RT74).

-- ONDA identifies its WF1 route as a “not”. For clarification for this current OR-034-012 inventory unit, BLM finds ONDA’s WF1 route to be a cherry-stem road to Murphy Reservoir.

-- At one location within T.20S., R.37E., ONDA identifies a combination of (1) a drainage channel (in sections 13 and 14), (2) abutting private land, and (3) its vehicular way WF3h (and what BLM concurs is a MPT) as boundary features for its Lake Ridge proposed WSA. Neither a drainage channel nor a MPT are qualifying boundaries for a BLM wilderness characteristics inventory unit; thus, BLM’s OR-034-012 includes additional public lands than does ONDA’s proposed WSA within this general location. Additionally, this added public land in the current BLM unit results in a private land parcel of approximately 640 acre being an inholding as a boundary feature of BLM’s OR-034-012 inventory unit.

-- ONDA applies a combination of (1) its vehicular ways WF14a and WF14b (and what BLM concurs are vehicular routes, including but limited to BLM’s 034-RT76 for this OR-034-012 unit), (2) adjacent private land and (3) legal descriptive section lines (between sections 17/20 and between 18/19, with public land on both sides of the section lines) as part of its proposed WSA boundary (within T.19S., R.38E.). Neither a section line across public land nor a MPT are qualifying boundaries for a BLM wilderness characteristics inventory unit; thus, BLM’s OR-034-012 includes additional public lands than does ONDA’s proposed WSA within this general location, as well. Additionally, this added public land in the current BLM unit results in a private land parcel of approximately 640 acres being an inholding as a boundary feature of BLM’s current OR-034-012 inventory unit.

For additional boundary road information, refer to this BLM inventory unit’s associated BLM Road Analysis form and its affiliated BLM Photo Point Map/Photo Log and photos for routes 7352-00 and 7354-00.

**Description of Current Conditions:** [Include land ownership, location, topography, vegetation features and summary of major human uses/activities.]

**1. Is the unit of sufficient size?**

Yes   X                        No           

**Description:** Refer to this inventory unit’s associated Map 1 and Map 2 for its location. The unit has 43,442 acres of public land. It has virtually the same bounds as the 2006-2007 BLM unit 3-4012; the present slight acreage difference from 3-4012’s figure is technical variance when applying measurement tools. The bounds of this current OR-034-012 unit are the same as those of BLM’s late 1970’s-1980 3-

6 inventory unit, except it including more public lands in its southern sector than did the 3-6 unit. Also, BLM presently concludes for this OR-034-012 unit that the current BLM routes 034-RT74 and 034-RT76, each which BLM identified in late 1970s-1980 and in 2007 as roads (cherry-stem road for 034-076), have changed status to a MPT due to no known mechanical maintenance performed and BLM foresees no need to conduct such maintenance on these routes in the future. Any rangeland improvement developments associated with these routes can be maintained without the need of mechanical maintenance of the routes for access to the developments.

Boundaries of OR-034-012 consist of BLM roads 7352-00 and 7354-00 as a continuous, route on the unit’s east side; County road 538 and a private land parcel on its north side, a mineral materials site, private land and the right-of-way (ROW) associated with US Highway 20 on its south end, and a combination of County roads 510 and 538, private land parcels and federal Bureau of Reclamation land on its west side. Four private land inholdings totaling approximately 1,720 acres and County road 3189 as a cherry-stem route to Murphy Reservoir are also boundary features of the unit. This current inventory unit’s boundary roads would be approved to receive mechanical maintenance as needed to provide for relatively regular and continuous use. For additional information of routes 7352-00 and 7254-00, refer to this BLM inventory unit’s associated BLM Road Analysis forms and their affiliated BLM Photo Point Map/Photo Log and photos.

OR-034-012 is substantially smaller than ONDA’s proposed 67,783 acre Lake Ridge WSA. Refer to this unit’s associated “NOTE” in this unit’s Form 2, above, for additional information and explanation.

**2. Is the unit in a natural condition?**

Yes \_\_\_\_\_ No   X   N/A \_\_\_\_\_

**Description:** The terrain is diverse, ranging from mountain tops, buttes, and ridges to canyons, foothills, and flats. DeArmond Mountain and Warm Springs Creek Canyon (mainly private property) are major features associated with the northern sector of the unit. Beulah Butte and Grasshopper Flat are the most noticeable features in the central sector. The south portion is the west-facing open slope of the north-south ridge. Elevations range from approximately 2,960 to 5,800 feet. The vegetation includes juniper, sagebrush and native and non-native grasses. Approximately half of the unit was affected by the 2007 Juniper Reservoir wildfire, including virtually the unit’s entire south half. Locations within OR-034-012 remain that also possess aspen, mountain mahogany, and willow and other species of riparian vegetation.

Refer to OR-034-012’s associated Map 1 and Map 2 for human imprints within the unit. Updated inventory documentation since 2007 shows the unit has 62.3 miles of 40 MPTs, approximately 63 miles of rangeland fence, 22 developed springs, a livestock water trough, and 43 earthen reservoirs. There remains no apparent visual



contrast of 3 prior route segments totaling 3.1 miles. Visible stumpage to the average visitor of approximately 235 total acres from within 5 locations of 2008 juniper felling projects are apparent in the inventory unit's central eastern sector. There remains no apparent visual contrast of 1963 and 1983 chemical treatment of vegetation or of a 1983 disc-drilled seeding of native forbs within the unit.

In 1980 (for BLM inventory unit 3-6), and again in 2007 (for BLM unit 3-4012), BLM determined that the cumulative impact of human imprints within these units (each which possessed basically the same bounds as the current OR-034-012 unit) resulted in the units not being in a natural condition. This is the same finding for this current OR-034-012 inventory unit. The number, extent, density, close proximity to each other, and extensive distribution throughout the inventory unit of the various rangeland improvement projects, juniper cuttings and MPTs – in combination – results in the entire unit not being affected primarily by the forces of nature and with the imprint of humans being substantially noticeable to the average visitor.

Of its Lake Ridge proposed WSA – at large -- ONDA indicates that the routes which separated the BLM late 1970's inventory units 3-6, 3-7 and 3-20 from each other (as roads per BLM at that time) are now vehicular ways (MPTs), thus contends those historic inventory units are now contiguous to each other and collectively within its Lake Ridge proposed WSA. The area which is the current BLM OR-034-012 inventory unit – and much which is also part of ONDA's proposed WSA -- is adjacent to but separate from any of those late 1970's BLM inventory units. ONDA limits any further discussion of vehicular ways to only that which was BLM's 3-6 unit, which constitutes only a portion of ONDA's proposed WSA (and only a portion of the current BLM OR-034-012 unit). Of these routes associated with BLM's 3-6 unit, ONDA states "More than 20 years later our inventory finds most of the ways in this unit are now overgrown and barely noticeable... Many of the ways could not be found at all", and directs the reader to 9 photos.

For its proposed WSA – at large -- ONDA limits discussion of rangeland developments to only earthen reservoirs (i.e., no mention of fences or developed springs) and – within that scope – only in context of BLM's late 1970's inventory unit 3-6, which constitutes only a portion of its proposed WSA (and only a portion of the current BLM OR-034-012 unit). ONDA states "reservoirs in the unit are for the most part overgrown and inconspicuous... However, the vegetative cover and diverse terrain provides sufficient screening making these developments visible for only a short distance" (the reader is directed to 9 photos). ONDA does not indicate numbers, extent or locations of rangeland fences, developed springs, earthen reservoirs, or certain additional MPTs known by BLM to be present within the area constituting ONDA's proposed WSA, while concluding "panoramas of the area show Lake Ridge proposed WSA to be primarily affected by the forces of nature without obvious intrusive works of man" and directs the reader to 8 photographs.

With this current BLM wilderness characteristic inventory maintenance, BLM does not draw any conclusions regarding the natural condition of ONDA's proposed

WSA. As provided above, BLM identifies known human developments within OR-034-0012, which, collectively, results in OR-034-012 to not be in a substantially natural condition.

### 3. Does the unit have outstanding opportunities for solitude?

Yes   X              No                       N/A           

**Description:** In 1980 (for BLM inventory unit 3-6), and again in 2007 (for BLM unit 3-4012), BLM determined that opportunities for outstanding solitude exists within those two inventory units (each which possessed basically the same bounds as the current OR-034-012 unit).

The finding for this current OR-034-012 inventory unit is the same. OR-034-012's relatively large size and the vegetative and topographic screening available in various locations within the unit – even when factoring the impacts of the 2007 wildfire to vegetative screening -- remains sufficient to provide outstanding opportunities for solitude. However, the orientation of the private inholdings and certain other bordering private lands of the unit results in the unit's width often being dissected and narrow; these circumstances would tend to confine visitors to certain areas elsewhere within the unit so to experience outstanding opportunities for solitude.

With this current BLM wilderness characteristic inventory maintenance, BLM does not draw any conclusions regarding outstanding opportunities for solitude within ONDA's substantially larger proposed WSA, which includes – in part – part of this current BLM OR-034-012 inventory unit. For reasons stated above, BLM concludes OR-034-012 does provide outstanding opportunities for solitude.

### 4. Does the unit have outstanding opportunities for primitive and unconfined recreation?

Yes   X              No                       N/A           

**Description:** Primary dispersed recreation activities include hunting of common game species, (e.g., deer, elk and chukar) and associated hiking. The diversity in terrain, varying vegetation composition settings, and size of the unit does avail it to backpacking and associated camping, but these activities are not prevalent. The unit also provides sightseeing (including scenery), wildlife viewing and photography opportunities. The southern portion of the unit is within a notably larger suitable habitat area for bighorn sheep, but the highly prized game species presently does not utilize the unit at this time. The unit does not possess any unique or special features which would specifically attract recreating visitors. However, in 1980 for inventory unit 3-6 and again in 2007 for inventory unit 3-4012, the two inventory units -- each which possess basically the same bounds as the current OR-034-012 unit – were found to offer outstanding opportunities for primitive recreation by BLM because of the variety of vegetation and terrain, abundant water (spring, reservoirs and creeks),

scenery, and plentiful wildlife; primitive recreation opportunities then provided included camping, hiking, backpacking, hunting, photography and sightseeing. The 2007 wildfire adversely affected some wildlife and their preferred habitats which have not fully recovered within the burn area, including within various locations of OR-034-012; yet, overall, not individually but in combination the above mentioned recreation activities do continue to provide outstanding opportunities for primitive and unconfined recreation within OR-034-012.

ONDA states that within its substantially larger Lake Ridge proposed WSA there exist a variety of habitats and vegetation including willow and streamside riparian, juniper, aspen, and mountain mahogany groves, sage and native grasses. It further states these characteristics offer outstanding opportunities for wildlife study, botany studies, bird watching, and hunting. With this current BLM wilderness characteristic inventory maintenance, BLM does not draw any conclusions regarding outstanding opportunities for primitive and unconfined recreation within ONDA's substantially larger proposed WSA, which includes – in part – a part of the current BLM OR-034-012 inventory unit. For reason stated above, BLM concludes OR-034-012 does provide outstanding opportunities for primitive and unconfined recreation.

#### 5. Does the unit have supplemental values?

Yes   X                        No                                 N/A           

**Description:** Two leks of sage grouse – a BLM special status animal species – have been documented within the unit. The historically significant Meeks Cutoff wagon train trail traverses the northern portion of the unit. Per BLM's 2007 wilderness characteristics inventory for unit 3-4012 (which possesses basically the same bounds as this current OR-034-012 unit), the area possesses suitable habitat for the spotted frog, a BLM special status animal species.

ONDA states that their proposed Lake Ridge WSA “provides habitat for Golden Eagle and Sage Grouse. It may also provide habitat for Mojave Black-Collared Lizard, Desert Horned Lizard, Ferruginous Hawk, Pygmy Rabbit, and White-tailed Antelope Squirrel,” which ONDA's February 2004 submission to the Vale District declares are listed as “sensitive species” by the State of Oregon. As of 2009, the Mohave Black-collard Lizard, Desert Horned Lizard, Ground Snake and the White-tailed Antelope Squirrel were not considered sensitive by Oregon Department of Fish and Wildlife, BLM, or U.S. Fish and Wildlife Service. BLM recognizes Greater Sage Grouse occur within this unit. BLM also acknowledges that habitat requirements may exist for Golden Eagle, Mojave Black-Collared Lizard, Desert Horned Lizard, Ferruginous Hawk, Pygmy Rabbit, and White-tailed Antelope Squirrel; however, neither ONDA nor any other entity has provided BLM with official documentation confirming the presence of these species within this inventory unit.

**Summary of Findings and Conclusion**

**Unit Name and Number:** OR-034-012 — DeArmond Mountain

**Summary Results of Analysis:**


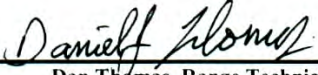

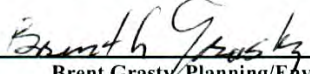
- 1. Does the area meet any of the size requirements?  Yes  No
- 2. Does the area appear to be natural?  Yes  No
- 3. Does the area offer outstanding opportunities for solitude or a primitive and unconfined type of recreation?  Yes  No  NA
- 4. Does the area have supplemental values?  Yes  No  NA

**Conclusion -- check one:**

- The area, or a portion of the area, has wilderness character.
- The area does not have wilderness character.

**Prepared by:**   
Robert Alward, Wilderness Planner contractor

**Team Members:**

<u></u>	<u>12/3/12</u>
Bill Lutjens, Rangeland Management Specialist	Date
<u></u>	<u>11/13/12</u>
Dan Thomas, Range Technician	Date
<u></u>	<u>11/13/12</u>
Shaney Rockefeller, Wild Horse Management Specialist	Date
<u></u>	<u>11/14/12</u>
Brent Grasty, Planning/Environmental Coordinator / prior GIS Coordinator	Date

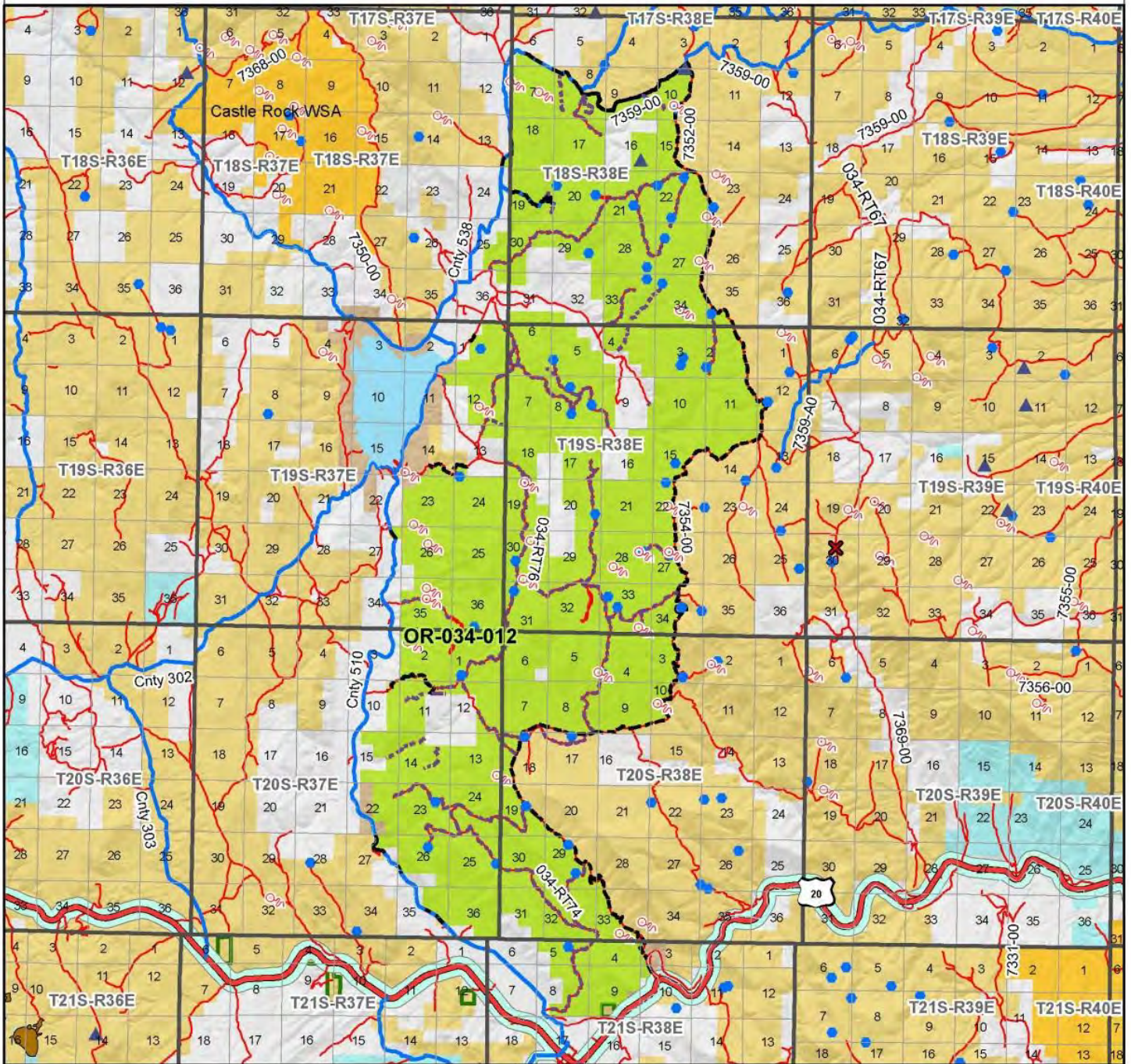
**Approved by:**

 12/6/12  
Pat Ryan, Malheur/Jordan Resource Area Field Manager Date

*This form documents information that constitutes an inventory finding on wilderness characteristics. It does not represent a formal land use allocation or a final agency decision subject to administrative remedies under either 43 CFR parts 4 or 1610.5-2.*

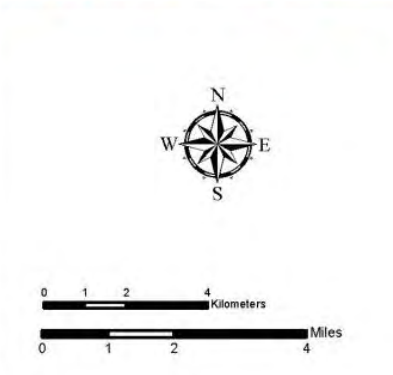
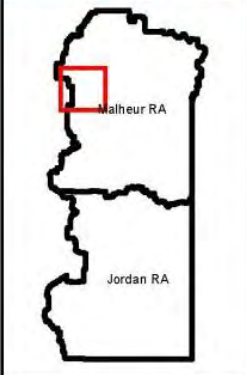
# Wilderness Characteristics - Overview

## DeArmond Mountain - OR-034-012 - Map 1 of 2



**Legend**

Developed Spring	<b>Route Types - BLM Determination</b>
Wildlife Guzzler	Boundary Road
Earththen Reservoir	Motorized Primitive Trail (MPT)
Pipeline	Discontinued Use
Trough	<b>Routes - Outside Wild Char Unit</b>
Fence	County
Storage Tank	Major Highway
Surface Mining Disturbance	BLM Numbered & Other Routes
Sage Grouse Lek	<b>Land Ownership</b>
Special Status Plant	Bureau of Land Management
BLM Wild Char Inventory Unit	State
Wilderness Study Area	Private
Mineral Material Site	Other Federal Land
Road/Utility Rights-of-Way	
Major Water Body	



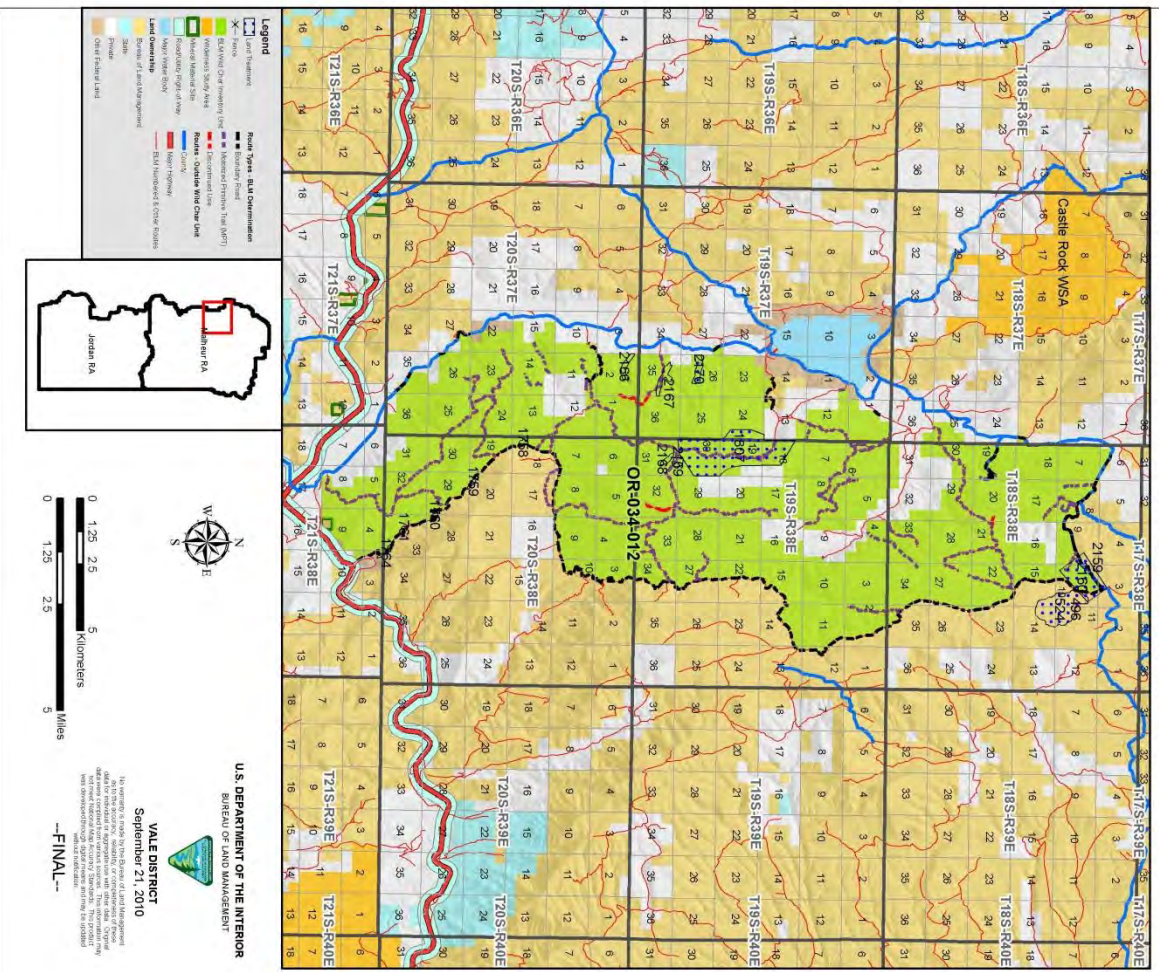
**U.S. DEPARTMENT OF THE INTERIOR**  
BUREAU OF LAND MANAGEMENT

**VALE DISTRICT**  
September 21, 2010

No warranty is made by the Bureau of Land Management as to the accuracy, reliability, or completeness of these data for individual or aggregate use with other data. Original data were compiled from various sources. This information may not meet National Map Accuracy Standards. This product was developed through digital means and may be updated without notification.

**--FINAL--**

### Wilderness Characteristics - Land Treatments DeArmond Mountain - OR-034-012 - Map 2 of 2

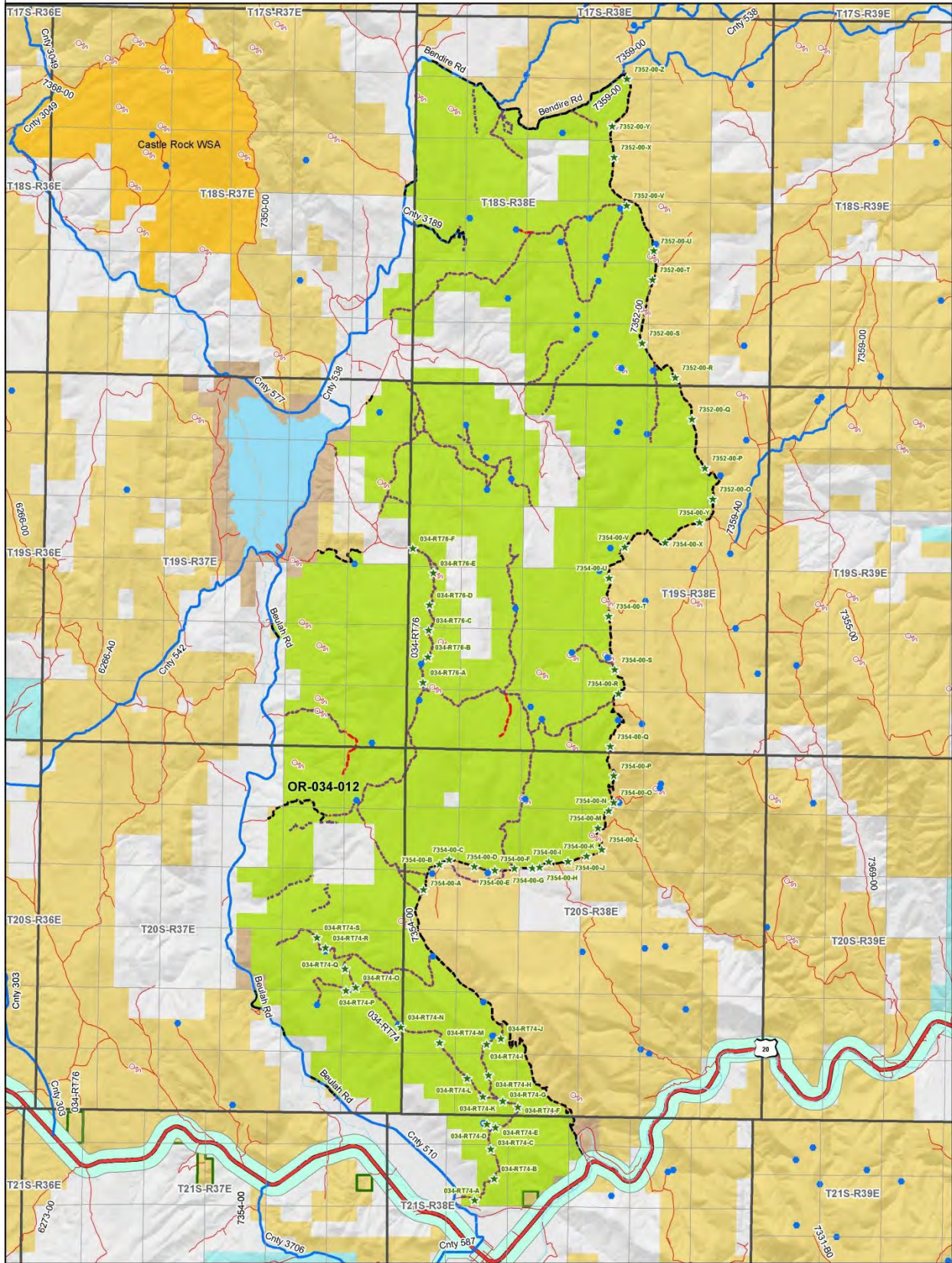


### Wilderness Characteristics - Land Treatments DeArmond Mountain - OR-034-012 - Map 2 of 2

OBJECTID*	NAME	TREATMENT TYPE	SEED GROUP	DATE
496	WILLLOW BASIN	Juniper Cutting	Not Applicable	20020930
524	WILLLOW BASIN	Prescribed Burn	Not Applicable	20030501
1758	JUNIPER GULCH PUTR PLANTING	Planting	Shrubs	20080427
1759	JUNIPER GULCH PUTR PLANTING	Planting	Shrubs	20080427
1760	JUNIPER GULCH PUTR PLANTING	Planting	Shrubs	20080427
1761	JUNIPER GULCH PUTR PLANTING	Planting	Shrubs	20080427
1762	JUNIPER GULCH PUTR PLANTING	Planting	Shrubs	20080427
1764	JUNIPER GULCH PUTR PLANTING	Planting	Shrubs	20080427
1807	POVERTY FLAT BRUSH CONTROL	Chemical Treatment	Not Applicable	1963
2159	WILLLOW BASIN BRUSH CONTROL	Drill Seeding	Not Applicable	1983
2160	WILLLOW BASIN BRUSH CONTROL	Drill Seeding	Not Applicable	20080626
2166	MOONSHINE SPRINGS	Contour Felling	Not Applicable	20080626
2168	BEULAH BUTTE	Contour Felling	Not Applicable	20080626
2169	BARREL SPRINGS	Contour Felling	Not Applicable	20080626
2170	THORN SPRINGS	Contour Felling	Not Applicable	20080626

Note: The Land Treatments represented by navy blue dots on the map to the left are labeled with the treatments ObjectIDs listed in the first field of the Land Treatments table shown above. Multiple types of treatments may have been applied to the same area. For example, one treatment area may have been plowed and drill seeded - a record is shown in the table for each type of treatment.

**Wilderness Characteristics - BLM Photo Points  
DeArmond Mountain - OR-034-012 - Sheet 1 of 3**



**Legend**

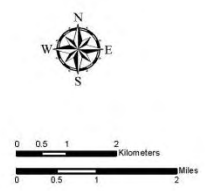
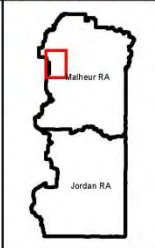
- Developed Spring
- ▲ Wildlife Outlier
- Earthen Reservoir
- Pipeline
- × Fence
- Mineral Material Site
- ▭ Road/Utility ROW
- ▭ Wilderness Study Area
- ★ BLM Wild Char Inventory Photo Points
- ▭ BLM Wild Char Inventory Unit

**Route Types - BLM Determination**

- Boundary Road
- Motorized Primitive Trail (MPT)
- Discontinued Use

**Routes - Outside Wild Char Unit**

- County
- Major Highway
- BLM Numbered & Other Routes



**U.S. DEPARTMENT OF THE INTERIOR**  
**BUREAU OF LAND MANAGEMENT**  
  
**VALE DISTRICT**  
 September 21, 2010  
No warranty is made by the Bureau of Land Management as to the accuracy, reliability, or completeness of these data for the individual or aggregate use with other data. Original data were compiled from various sources. This information may not meet National Map Accuracy Standards. This product was developed through digital means and may be updated without notification.

--FINAL--

**Wilderness Characteristics - BLM Photo Points  
DeArmond Mountain - OR-034-012 - Sheet 2 of 3**

PHOTO_LOCATION*	DIRECTION	PHOTO_TYPE	PHOTO_DATE	COMMENTS
7354-00-A	NE	Route	20090623	Ditch. Double berm.
7354-00-A	SW	Route	20090623	Ditch. Double berm.
7354-00-B	NE	Route	20090623	Ditch, rock berm on South side of route.
7354-00-B	SW	Route	20090623	Ditch, rocky berm on South side of route.
7354-00-C	E	Route	20090623	Small ditch, rocky berm. Road cut.
7354-00-C	W	Route	20090623	Ditch, culvert.
7354-00-D	E	Route	20090623	Ditch, rocky berm.
7354-00-D	W	Route	20090623	Ditch, rocky berm.
7354-00-E	E	Route	20090623	Ditch, rocky berm.
7354-00-E	W	Route	20090623	Ditch, rocky berm.
7354-00-F	E	Route	20090623	Culvert.
7354-00-F	W	Route	20090623	Large ditch.
7354-00-G	E	Route	20090623	Small ditch, large rocks moved off route.
7354-00-G	W	Route	20090623	Drainage.
7354-00-H	NE	Route	20090623	Drain. Rocky berm.
7354-00-H	SW	Route	20090623	Small ditch.
7354-00-I	S	Route	20090623	Side cut.
7354-00-I	N	Route	20090623	Side cut with culvert hidden in weeds.
7354-00-J	E	Route	20090623	Large rocky berm. Ditch.
7354-00-J	W	Route	20090623	Large rocky berm. Ditch.
7354-00-K	E	Route	20090623	Two large rocky berms, ditch.
7354-00-K	W	Route	20090623	Two large rocky berms. Ditch.
7354-00-L	N	Route	20090623	Side cut.
7354-00-L	S	Route	20090623	Side cut.
7354-00-M	E	Route	20090623	Side cut.
7354-00-M	W	Route	20090623	Ditch.
7354-00-N	N	Route	20090623	Side cut.
7354-00-N	S	Route	20090623	Side cut.
7354-00-O	NE	Route	20090623	Side cut. Small ditch.
7354-00-O	SW	Route	20090623	Side cut. Small ditch.
7354-00-P	N	Route	20090623	Small rocky berm on West side of route.
7354-00-P	S	Route	20090623	Small side cut.
7354-00-Q	N	Route	20090623	Side cut.
7354-00-Q	S	Route	20090623	Side cut.
7354-00-R	E	Route	20090623	Side cut, small berm on the North side of route.
7354-00-R	W	Route	20090623	Side cut, small berm on the North side of route.
7354-00-S	NW	Route	20090623	Side cut. Ditch.
7354-00-S	SE	Route	20090623	Side cut. Ditch.
7354-00-T	N	Route	20090623	Side cut. Ditch.
7354-00-T	S	Route	20090623	Side cut. Ditch.
7354-00-U	N	Route	20090623	Side cut.
7354-00-U	S	Route	20090623	Side cut.
7354-00-V	NE	Route	20090623	Double rocky berm. Ditch.
7354-00-V	SW	Route	20090623	Double rocky berm. Ditch.
7354-00-X	NE	Route	20090623	Rocks pushed far off route to the North.
7354-00-X	SW	Route	20090623	Rocky berm and ditch to the South.
7354-00-Y	E	Route	20090623	Ditch. Small berm.
7354-00-Y	W	Route	20090623	Ditch. Small rocky berm.
7352-00-O	N	Route	20090623	Side cut. Ditch.
7352-00-O	S	Route	20090623	Side cut.
7352-00-P	NW	Route	20090623	Small ditch. Berm.
7352-00-P	SE	Route	20090623	Small ditch. Berm.
7352-00-Q	N	Route	20090623	Side cut. Berm.
7352-00-Q	S	Route	20090623	Side cut. Berm.
7352-00-R	NW	Route	20090623	Large berm. Small ditch.
7352-00-R	SE	Route	20090623	Large berm. Small ditch.
7352-00-S	NW	Route	20090623	Large berms.
7352-00-S	SE	Route	20090623	Large berms.
7352-00-T	N	Route	20090623	Side cut.
7352-00-T	S	Route	20090623	Back
7352-00-U	N	Route	20090623	Creek crossing
7352-00-U	S	Route	20090623	Projects. Troughs.
7352-00-V	NW	Route	20090623	Side cut.
7352-00-V	SE	Route	20090623	Back.
7352-00-X	N	Route	20090623	Slight side cut.
7352-00-X	S	Route	20090623	Back
7352-00-Y	E	Route	20090623	Large berm. Side cut.
7352-00-Y	W	Route	20090623	Large berm. Large rocks moved off route.
7352-00-Z	NW	Route	20090623	Berm.
7352-00-Z	SE	Route	20090623	Berm.

Note: The BLM Wild Char PhotoPoints displayed on the map are labeled with their Photo Locations. The BLM Photo Log table shown above lists the photos taken at their respective Photo Locations. Multiple photos may be taken at each Photo Location. Scenery and Project Photo Type pictures have their photo names provided in the Comments field.



**Wilderness Characteristics - BLM Photo Points  
DeArmond Mountain - OR-034-012 - Sheet 3 of 3**

PHOTO_LOCATION*	DIRECTION	PHOTO_TYPE	PHOTO_DATE	COMMENTS
034-RT74-A	E	Route	20090624	Rocky berms. Side cut.
034-RT74-A	W	Route	20090624	Rocky berms. Side cut.
034-RT74-B	NE	Route	20090624	Rocky berms. Side cut.
034-RT74-B	SW	Route	20090624	Rocky berms. Side cut.
034-RT74-C	N	Route	20090624	Rocky berms. Side cut.
034-RT74-C	S	Route	20090624	Rocky berms. Side cut.
034-RT74-D	S	Route	20090624	Side cut.
034-RT74-D	N	Route	20090624	Side cut.
034-RT74-E	E	Route	20090624	Side cut.
034-RT74-E	W	Route	20090624	Side cut.
034-RT74-F	NW	Route	20090624	Berm.
034-RT74-F	SE	Route	20090624	Berm.
034-RT74-G	W	Route	20090624	Berm.
034-RT74-G	E	Route	20090624	Berm. Drainage.
034-RT74-H	NW	Route	20090624	Slight side cut.
034-RT74-H	SE	Route	20090624	Slight side cut.
034-RT74-I	NE	Route	20090624	Rocky berm.
034-RT74-I	SW	Route	20090624	Rocky berm.
034-RT74-J	N	Route	20090624	Berm.
034-RT74-J	S	Route	20090624	Berm.
034-RT74-K	NW	Route	20090624	Small rocky berm.
034-RT74-K	SE	Route	20090624	Small rocky berm.
034-RT74-L	W	Route	20090624	Side cut. Rocky berm.
034-RT74-L	E	Route	20090624	Side cut. Rocky berm.
034-RT74-M	N	Route	20090624	Side cut. Berm.
034-RT74-M	S	Route	20090624	Side cut. Berm.
034-RT74-N	N	Route	20090624	Side cut.
034-RT74-N	S	Route	20090624	Side cut.
034-RT74-O	W	Route	20090624	Small berm.
034-RT74-O	E	Route	20090624	Small berm.
034-RT74-P	NW	Route	20090624	No evidence. Route disappears.
034-RT74-P	SE	Route	20090624	No evidence of construction or maintenance.
034-RT74-Q	N	Route	20090624	Slight side cut.
034-RT74-Q	S	Route	20090624	Slight side cut.
034-RT74-R	SW	Route	20090624	Berm.
034-RT74-R	NE	Route	20090624	Berm.
034-RT74-S	NW	Route	20090624	Berm.
034-RT74-S	SE	Route	20090624	Berm.
034-RT76-A	N	Route	08/20/09	Small berm.
034-RT76-A	S	Route	08/20/09	Small berm.
034-RT76-B	N	Route	08/20/09	Berms.
034-RT76-B	S	Route	08/20/09	Berms.
034-RT76-C	N	Route	08/20/09	Berm s.
034-RT76-C	S	Route	08/20/09	Berm s.
034-RT76-D	N	Route	08/20/09	Side cut.
034-RT76-D	S	Route	08/20/09	Side cut.
034-RT76-E	N	Route	08/20/09	Side cut. Berms.
034-RT76-E	S	Route	08/20/09	Small berms.
034-RT76-F	W	Route	08/20/09	No evidence of construction or maintenance.
034-RT76-F	E	Route	08/20/09	No evidence of construction or maintenance.

Note: The BLM Wild Char PhotoPoints displayed on the map are labeled with their Photo Locations. The BLM Photo Log table shown above lists the photos taken at their respective Photo Locations. Multiple photos may be taken at each Photo Location. Scenery and Project Photo Type pictures have their photo names provided in the Comments field.



034-RT74-A-E.JPG



034-RT74-A-W.JPG



034-RT74-B-NE.JPG



034-RT74-B-SW.JPG



034-RT74-C-N.JPG



034-RT74-C-S.JPG



034-RT74-D-N.JPG



034-RT74-D-S.JPG



034-RT74-E-E.JPG



034-RT74-E-W.JPG



034-RT74-G-E.JPG



034-RT74-H-SE.JPG



034-RT74-F-NW.JPG



034-RT74-G-W.JPG



034-RT74-I-NE.JPG



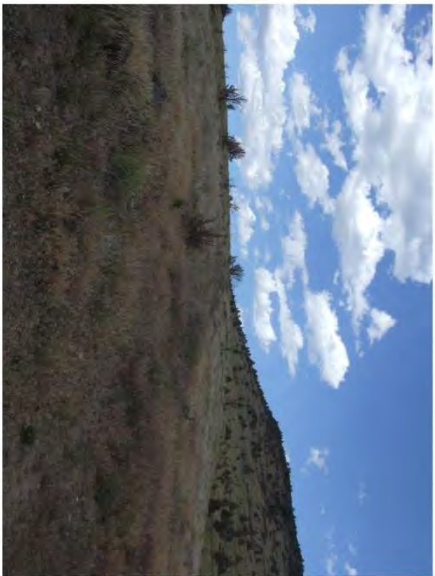
034-RT74-F-SE.JPG



034-RT74-H-NW.JPG



034-RT74-I-SW.JPG



034-RT74-J-N.JPG



034-RT74-K-SE.JPG



034-RT74-M-N.JPG



034-RT74-J-S.JPG



034-RT74-L-E.JPG



034-RT74-M-S.JPG



034-RT74-K-NW.JPG



034-RT74-L-W.JPG



034-RT74-N-N.JPG



034-RT74-N-S.JPG



034-RT74-O-E.JPG



034-RT74-O-W.JPG



034-RT74-P-NW.JPG



034-RT74-P-SE.JPG



034-RT74-Q-N.JPG



034-RT74-Q-S.JPG



034-RT74-R-NE.JPG



034-RT74-R-SW.JPG



034-RT74-S-NW.JPG



034-RT76-A-S.JPG



034-RT76-C-N.JPG



034-RT74-S-SE.JPG



034-RT76-B-N.JPG



034-RT76-C-S.JPG



034-RT76-A-N.JPG



034-RT76-B-S.JPG



034-RT76-D-N.JPG



034-RT76-D-S.JPG



034-RT76-F-E.JPG



7352-00-O-S.JPG



034-RT76-E-N.JPG



034-RT76-F-W.JPG



7352-00-P-NW.JPG



034-RT76-E-S.JPG



7352-00-O-N.JPG



7352-00-P-SE.JPG



7352-00-Q-N.JPG



7352-00-Q-S.JPG



7352-00-R-NW.JPG



7352-00-R-SE.JPG



7352-00-S-NW.JPG



7352-00-S-S.JPG



7352-00-S-SE.JPG



7352-00-T-N.JPG



7352-00-T-S.JPG





7352-00-T-W.JPG



7352-00-U-N.JPG



7352-00-U-S.JPG



7352-00-V-NW.JPG



7352-00-V-SE.JPG



7352-00-X-N.JPG



7352-00-X-S.JPG



7352-00-Y-E.JPG



7352-00-Y-W.JPG



7352-00-Z-NW.JPG



7354-00-A-SW.JPG



7354-00-C-E.JPG



7352-00-Z-SE.JPG



7354-00-B-NE.JPG



7354-00-C-W.JPG



7354-00-A-NE.JPG



7354-00-B-SW.JPG



7354-00-D-E.JPG



7354-00-D-W.JPG



7354-00-F-E.JPG



7354-00-G-W.JPG



7354-00-E-E.JPG



7354-00-F-W.JPG



7354-00-H-NE.JPG



7354-00-E-W.JPG



7354-00-G-E.JPG



7354-00-H-SW.JPG



7354-00-I-N.JPG



7354-00-I-S.JPG



7354-00-J-E.JPG



7354-00-J-W.JPG



7354-00-K-E.JPG



7354-00-K-W.JPG



7354-00-L-N.JPG



7354-00-L-S.JPG



7354-00-M-E.JPG



7354-00-M-W.JPG



7354-00-N-N.JPG



7354-00-N-S.JPG



7354-00-O-NE.JPG



7354-00-O-SW.JPG



7354-00-P-N.JPG



7354-00-P-S.JPG



7354-00-Q-N.JPG



7354-00-Q-S.JPG



7354-00-RE.JPG



7354-00-R-W.JPG



7354-00-S-NW.JPG



7354-00-S-SE.JPG



7354-00-T-N.JPG



7354-00-T-S.JPG



7354-00-U-N.JPG



7354-00-U-S.JPG



7354-00-V-NE.JPG



7354-00-V-SW.JPG



7354-00-X-NE.JPG



7354-00-X-SW.JPG



7354-00-Y-E.JPG



7354-00-Y-W.JPG



7354-00-Z-NE.JPG



7354-00-Z-SW.JPG

**H-6300-1-WILDERNESS INVENTORY MAINTENANCE  
IN BLM OREGON/WASHINGTON**

**APPENDIX C – ROAD\* ANALYSIS**

(Factors to consider when determining whether a route is a road for wilderness inventory purposes.)

**Wilderness Inventory Unit Name/Number: OR-034-012 – DeArmond Mountain**

**NOTE:** This unit is affected by ONDA’s Lake Ridge proposed WSA.

**Route Name and/or Identifier** (*Include Transportation Plan Identifier, if known; include route number supplied by citizen information when available*):

**BLM 7352-00 and 7254-00**

(These two BLM routes are identified by ONDA on its Road Log as a combination of 3 routes of one linear route: its “WF3a” and “WF3b” – both which are described by ONDA as a motorized vehicle “way” [i.e., what BLM terms a motorized primitive trail – MPT -- for this wilderness characteristics (WC) inventory maintenance] – and, thirdly, of ONDA’s route “WF3c”, which ONDA depicts as a cherry-stemmed road. The north end of ONDA’s WF3c cherry-stem road ends in section 10, T20S, R38E; from there ONDA’s contiguous WF3b and WF3a then continue north as 2 contiguous – but ,physically, one linear – MPT. )

**I. LOCATION:** Refer to attached map (is the east boundary of this BLM WC inventory unit). **List photo point references (if applicable):** Refer to this BLM inventory unit’s associated hard copy of its BLM Photo Points map, and affiliated Photo Log and photos -- retained in this unit’s permanent hard copy file, and electronically retained under this unit’s BLM name and identifier. Any applicable ONDA photos and affiliated Photo Log are electronically retained in Vale District files of Wilderness Characteristics.

**II. CURRENT PURPOSE OF ROUTE:**

*(Examples: Rangeland/Livestock Improvements (stock tank, developed spring, reservoir, fence, corral), Inholdings (ranch, farmhouse), Mine Site, Concentrated Use Site (camp site), Utilities (transmission line, telephone, pipeline), Administrative (project maintenance, communication site, vegetation treatment).)*

**Describe:** These two BLM routes together make for a significant contiguous connector through-route between BLM road 7359-00 on the inventory unit’s north end to US Highway 20 at its south end. It is associated with 5 abutting BLM livestock grazing allotments. The route is traveled by BLM and livestock operators for performing various livestock management activities in the 5 allotments (e.g., range studies and monitoring, livestock use monitoring, project monitoring and maintenance). This north-south combined 7352-00 – 7354-00 route is also traveled by the recreating public, primarily by hunters of common game species (e.g., deer, elk and grouse) and their affiliated dispersed motorized vehicle-supported camp sites. The 7252-00 and 7354-00 merge together at the junction of where BLM 7354-



00 veers east and away from this inventory unit. BLM has determined that this veering eastward 7354-00 and the 7352-00 segment are both roads which also serve as boundary features of an adjacent BLM WC inventory unit (OR-034-003, Northeast Lake Ridge) to this OR-034-012 WC inventory unit.

### III. ROAD RIGHT-OF-WAY:

Is a road right-of-way associated with this route?

Yes \_\_\_\_\_ No  X  Unknown \_\_\_\_\_

### IV. CONSTRUCTION

Yes  X  No \_\_\_\_\_

Examples: Paved \_\_\_\_\_ Bladed  X  Graveled \_\_\_\_\_  
Berms  X  Cut/Fill  X  Other \_\_\_\_\_

**Describe:** Date of construction is unknown, but occurred prior to the late 1970's BLM wilderness characteristics inventory and identified as a road in that inventory.

### V. IMPROVEMENTS

Yes  X  No \_\_\_\_\_

By Hand Tools \_\_\_\_\_ By Machine  X

Examples: Culverts  X  Stream Crossings \_\_\_\_\_ Bridges \_\_\_\_\_  
Drainage  X  Barriers \_\_\_\_\_ Other \_\_\_\_\_

**Describe:** Culverts placed where needed to retain travel surface integrity. There is evidence of some grader-bladed side ditches to help minimize water saturation of the route's travel surface of in-place soils and other natural materials.

### VI. MAINTENANCE:

**A. Is there Evidence or Documentation of Maintenance using hand tools or machinery?** Yes  X  No \_\_\_\_\_

**If yes: Hand Tools (Y/N)** \_\_\_\_\_ **Machine (Y/N)**  Y

**Explain:** There are double linear earthen berms along sections of the route's length created by repeated blading over time of the route's travel surface. It is not known when the last grading of the route was performed. Terrain, soil types and slight gradients associated with much of the route creates conditions requiring very little mechanical maintenance; respectively, some sections of the route's travel surface is encroached by (mostly) annual grass species, sometimes giving the false appearance of a route not having been mechanically maintained.

**B. If the route is in good condition, but there is no evidence of maintenance, would mechanical maintenance with hand tools or machines be approved by BLM in the event this route became impassable?**

Yes   X   No       

**Comments:** The BLM would provide for a level of mechanical maintenance of this route as needed to allow for relatively regular motorized vehicle travel over the long term.

**VII. REGULAR AND CONTINUOUS USE:**

Yes   X   No       

**Describe evidence (vehicle tracks observed) and other rationale for whether use has occurred and will continue to occur on a relatively regular basis:**

It is used by BLM and livestock permittees on a relatively regular and continuous basis. On an annual basis the route is used by travelers as a connector to other roads extending east, north and south of it.

**VIII. CONCLUSION:**

**To meet the definition of a road, items IV or V, and VI-A or B, and VII must be checked yes.**

Road: Yes   X   No       

**Explanation:** Meets criteria for road, as described and explained, above.

Evaluator(s): Shaney Rockefeller Date: 11/13/12  
 Shaney Rockefeller, Wild Horse Management Specialist

Bill Lutjens Date: 12/3/12  
 Bill Lutjens, Rangeland Management Specialist

\* **road:** An access route which has been **improved and maintained** by **mechanical means** to insure **relatively regular and continuous use**. A way maintained solely by the passage of vehicles does not constitute a road.

a. **“Improved and maintained”** – Actions taken physically by people to keep the road open to vehicle traffic. “Improved” does not necessarily mean formal construction. “Maintained” does not necessarily mean annual maintenance.

b. **“Mechanical means”** – Use of hand or power machinery or tools.

c. **“Relatively regular and continuous use”** – Vehicular use that has occurred and will continue to occur on a relatively regular basis. Examples are: access roads for equipment to maintain a stock water tank or other established water sources; access roads to maintained recreation sites or facilities; or access roads to mining claims.

---

*Following is the definition from Glossary of OSO 7-3-2007 Draft H-6300-1:*

**road:** The BLM will continue to base the definition of what constitutes a “road” from the FLPMA’s legislative history. The language below is from the House of Representatives Committee Report 94-1163, page 17, dated May 15, 1976, on what became the FLPMA. It is the only statement regarding the definition of a road in the law or legislative history.

“The word ‘roadless’ refers to the absence of roads which have been improved and maintained by mechanical means to insure relatively regular and continuous use. A way maintained solely by the passage of vehicles does not constitute a road.”

The BLM previously adopted and will continue to use the following sub-definitions of certain words and phrases in the BLM road definition stated above:

a. **“Improved and maintained”** – Actions taken physically by people to keep the road open to vehicle traffic. “Improved” does not necessarily mean formal construction. “Maintained” does not necessarily mean annual maintenance.

b. **“Mechanical means”** – Use of hand or power machinery or tools.

c. **“Relatively regular and continuous use”** – Vehicular use that has occurred and will continue to occur on a relatively regular basis. Examples are: access roads for equipment to maintain a stock water tank or other established water sources; access roads to maintained recreation sites or facilities; or access roads to mining claims.

A road that was established or has been maintained solely by the passage of vehicles would not be considered a road, even if it is used on a relatively regular and continuous basis. Vehicle roads constructed by mechanical means but that are no longer being maintained by mechanical methods are not roads. Sole use of hands and feet to move rocks or dirt without the use of tools or machinery does not meet the definition of “mechanical means.” Roads need not be “maintained” on a regular basis but rather “maintained” when road conditions warrant actions to keep it in a usable condition. A dead-end (cherry-stem) road can form the boundary of an inventory area and does not by itself disqualify an area from being considered “roadless”.