

Wilderness Inventory Unit Index of Documents
Deadman Creek OR-034-071, 10 total pages

Page 1: Index Cover Sheet

[Page 2: Form 1 – Documentation of BLM Wilderness Inventory: Findings on Record](#)

[Page 5: Form 2 – Documentation of Current Wilderness Inventory Conditions](#)

[Page 9: Form 2 – Summary of Findings and Conclusion](#)

[Page 10: Wilderness Characteristics Overview–Deadman Creek OR-034-071 Map](#)

Prepared by:
U.S. Department of the Interior
Bureau of Land Management
Vale District Office
100 Oregon Street
Vale, Oregon 97918



H-6300-1-WILDERNESS INVENTORY MAINTENANCE IN BLM OREGON/WASHINGTON

APPENDIX B – INVENTORY AREA EVALUATION

Evaluation of Current Conditions:

1) Document and review the existing BLM wilderness inventory findings on file, if available, regarding the presence or absence of individual wilderness characteristics, using Form 1, below.

2) Consider relevant information regarding current conditions available in the office to identify and describe any changes to the existing information (use interdisciplinary (ID) team knowledge, aerial photographs, field observations, maps, etc.), and document your findings on Form 2, below.

When Citizen Information has been submitted regarding wilderness characteristics, document the submitted materials including: date of Submission; Name of District(s) and Field Office(s) Affected; Type of material Submitted (e.g. narrative, map, photo). Evaluate any submitted citizen information regarding the validity of proposed boundaries of the unit(s), the existence of roads and other boundary features, the size of the unit(s), and the presence or absence of wilderness characteristics based on relevant information available in the office (prior BLM inventories, ID team knowledge, aerial photographs, field observations, maps, etc.)

Conduct field reviews as necessary to verify information and to ascertain current conditions. Reach conclusions on current conditions including boundaries, size of areas and presence or absence of wilderness characteristics. Fully explain the basis for each conclusion on form 2, including any critical differences between BLM and citizen information.

Document your findings regarding current conditions for each inventoried area. Describe how the present conditions are similar to, or have changed from, the conditions documented in the original wilderness inventory. Document your findings on Form 2 for each inventory area. Cite to or attach data considered, including photographs, maps, GIS layers, field trip notes, project files, *etc.*

Year: 2010 **Unit Number/Name:** OR-034-071 -- Deadman Creek

**FORM 1 -- DOCUMENTATION OF BLM WILDERNESS INVENTORY
FINDINGS ON RECORD**

1. Is there existing BLM wilderness inventory information on all or part of this area?

Yes No (If yes, and if more than one unit is within the area, list the names of those units.):

A.) Inventory Source(s) -- (X) Denotes all applicable BLM Inventory files, printed maps, or published BLM Decision documents with information pertaining to this unit.

Wilderness Inventories

- (X) 1978 - 1980 -- BLM Wilderness Inventory Units 3-121 Deadman Creek of OR-03-06-15; OR-03-06-13 Big Flat; partially each of: OR-03-06-34 Juniper, OR-03-06-14 Hughes, and OR-03-06-35 Young Ranch (unpublished BLM documents in case files, except for 3-121)
- () April 1979 – *Wilderness -- Proposed Initial Inventory – Roadless Areas and Islands Which Clearly Do Not have Wilderness Characteristics, Oregon and Washington*

Wilderness Decision Documents

- () August 1979 – *Wilderness Review – Initial Inventory, Final Decision on Public Lands Obviously Lacking Wilderness Characteristics and Announcement of Public Lands to be Intensively Inventoried for Wilderness Characteristics, Oregon and Washington* (green document)
- () October 1979 – *Wilderness Review – Intensive Inventory - Oregon, Proposed Decision on the Intensive Wilderness Inventory of Selected Areas* (grey document)
- (X) March 1980 – *Wilderness Review – Intensive Inventory; Final Decisions on 30 Selected Units in Southeast Oregon and Proposed Decisions on Other Intensively Inventoried Units in Oregon and Washington* (orange document)
- (X) November 1980 - *Wilderness Inventory – Oregon and Washington, Final Intensive Inventory Decisions* (brown document)
- () November 1981 *Stateline Intensive Wilderness Inventory Final Decision, Oregon, Idaho, Nevada, Utah* (tan document).

B.) Inventory Unit Name(s)/Number(s)

3-121 Deadman Creek of OR-03-06-15; OR-03-06-13 Big Flat; partially each of: OR-03-06-34 Juniper, OR-03-06-14 Hughes, and OR-03-06-35 Young Ranch

C.) Map Name(s)/Number(s)

- () Final Decision – Initial Wilderness Inventory Map, August 1979, Oregon
- () Proposed Decision -- Intensive Wilderness Inventory of Selected Areas Map, October 1979, Oregon
- (X) Intensive Wilderness Inventory Map, March 1980, Oregon
- (X) Intensive Wilderness Inventory --Final Decisions Map, November 1980, Oregon.
- () November, 1981 *Stateline Intensive Wilderness Inventory Final Decision, Oregon, Idaho, Nevada, Utah* (tan document).

D.) BLM District(s)/Field Office(s)

Vale District Office/ Malheur Field Office

2. BLM Inventory Findings on Record

(Existing inventory information regarding wilderness characteristics (if more than one BLM inventory unit is associated with the area, list each unit and answer each question individually for each inventory unit):

Inventory Source: See above.

Unit#/ Name	Size (historic acres)	Natural Condition? Y/N	Outstanding Solitude? Y/N	Outstanding Primitive & Unconfined Recreation? Y/N	Supplemental Values? Y/N
3-121 Deadman of OR-03-06-15	8,440	Y	N	N	N
OR-03-06-13 Big Flat	5,600	*	*	*	*
Part of OR-03-06-14 Hughes	160	*	*	*	*
Part of OR-03-06-34 Juniper	3,720	*	*	*	*
Part of OR-03-06-35 Young Ranch	2,120	*	*	*	*
TOTAL	20,040				

* -- These criteria were not addressed during the inventory of the units since none of these units meet size criteria.

H-6300-1-WILDERNESS INVENTORY MAINTENANCE IN BLM OREGON/WASHINGTON

APPENDIX B – INVENTORY AREA EVALUATION

Evaluation of Current Conditions:

- 1) Document and review the existing BLM wilderness inventory findings on file, if available, regarding the presence or absence of individual wilderness characteristics, using Form 1, below.
- 2) Consider relevant information regarding current conditions available in the office to identify and describe any changes to the existing information (use interdisciplinary (ID) team knowledge, aerial photographs, field observations, maps, etc.), and document your findings on Form 2, below.

When Citizen Information has been submitted regarding wilderness characteristics, document the submitted materials including: date of Submission; Name of District(s) and Field Office(s) Affected; Type of material Submitted (e.g. narrative, map, and photos). Evaluate any submitted citizen information regarding the validity of proposed boundaries of the unit(s), the existence of roads and other boundary features, the size of the unit(s), and the presence or absence of wilderness characteristics based on relevant information available in the office (prior BLM inventories, ID team knowledge, aerial photographs, field observations, maps, etc.)

Conduct field reviews as necessary to verify information and to ascertain current conditions. Reach conclusions on current conditions including boundaries, size of areas and presence or absence of wilderness characteristics. Fully explain the basis for each conclusion on form 2, including any critical differences between BLM and citizen information.

Document your findings regarding current conditions for each inventoried area. Describe how the present conditions are similar to, or have changed from, the conditions documented in the original wilderness inventory. Document your findings on Form 2 for each inventory area. Cite to or attach data considered, including photographs, maps, GIS layers, field trip notes, project files, *etc.*

FORM 2 -- DOCUMENTATION OF CURRENT WILDERNESS INVENTORY CONDITIONS

Unit Number/Name: OR-034-071 — Deadman Creek

NOTE: On July 26, 2010 -- during the scoping period for the BLM Vale District's Southeastern Oregon Resource Management Plan Amendment -- the Vale District received a letter from Tree Top Ranches, L.P. (henceforth herein as Tree Top). Tree Top is a grazing allotment permittee of several allotments administered by Vale District. Tree Tops' submission provides, in part, information about all or a portion of several BLM WC inventory units, including this unit, OR-034-071. For reference, a hard copy of the applicable elements of Tree Top's letter is retained in this unit's file. Information provided by Tree Top was considered and incorporated as appropriate for this BLM Wilderness Characteristics Inventory maintenance.

Description of Current Conditions: [Include land ownership, location, topography, vegetation features and summary of major human uses/activities.]

1. Is the unit of sufficient size?

Yes X No

Description: See this inventory unit's associated Map 1 for its location. The unit has 28,043 acres of public land. The unit consists of a combination of all and part of five BLM late 1970's inventory units which were, at the time, separated by what BLM determined to be roads. The difference in size for OR-034-071 from the sum of the five is presently improved methods for determining acreage and, possibly, some misinterpretation of data from the late 1970's. Six routes which were then determined to be roads have since changed status to motorized primitive trails (MPT) because no known mechanical maintenance has been performed on them since the late 1970's and BLM does not intend to perform such maintenance to provide for relatively regular and continuous use.

The unit's boundaries consist of BLM road 7316-0-00 in its southeast area, BLM road 7317-0-00 and non-BLM lands on its east side, and non-BLM lands on the remainder of the unit's perimeter.

2. Is the unit in a natural condition?

Yes X No N/A

Description: The unit includes a diversity of multi-directional drainage patterns associated with -- in part but limited to -- portions of the watersheds of Deadman, Robinson, Pole and Swamp Creeks. Elevations range from about 4,320 to 5,700 feet. Drainages are separated by various hill tops and small ridge systems; a significant ridge is

located near the unit's northeast boundary proximate to Big Flat Lake (this ephemeral lake is outside of the unit). About 6 natural "waterhole" ponds are distributed within the unit. Vegetation is predominately sagebrush and both native and non-native grasses. Juniper is found on some of the higher elevated features and in the upper shallow draws of Deadman Creek.

Refer to this inventory unit's associated Map 1 for human imprints. There are 21.9 miles of rangeland fences, 16 earthen reservoirs and 52 miles of 19 motorized primitive trails (MPTs). Although there is some concentration of MPTs within the central area of the unit, topographic features of the area keep many from view of each other. Overall, the types and location of the developments within the unit result in the unit appearing to be affected primarily by the forces of nature with the imprint of humans substantially unnoticeable to the average visitor.

3. Does the unit have outstanding opportunities for solitude?

Yes No N/A

Description: The unit has multiple small extruded tracts or fingers of public land (a quarter mile to one mile in width) at its northern-most end and along portions of its west boundary. Additionally, the unit's southwest sector has an area 1 to 2.5 miles wide by about 5 miles long that is substantially of low-profiled to nearly flat terrain. This area and the areas of extruded/fingered land tracts – which collectively constitute about a third of the unit's acreage -- do not provide sufficient configuration or variance in topographic features within them to screen between visitors for outstanding opportunities for solitude. The remainder of the unit – generally described as its eastern two thirds -- is predominately 7 to 8 miles in length with widths ranging from predominately 4 plus miles to as narrow as 2.25 miles in the central east-west "neck" of this eastern two thirds area of the inventory unit. Topography within this two thirds area of the unit provides sufficient diversity and elevation variance – in combination with this area's configuration -- to provide outstanding opportunities for solitude. Additionally, there are multiple locations within this two-thirds area that provide adequate height and/or density of juniper stands to enhance screening between visitors.

This is a different finding than what was concluded by BLM in the late 1970/s/1980 wilderness characteristics inventory. Most of the historic units constituting this current unit were not reviewed for solitude since they did not meet any size criteria. The 8,440 acre 3-121 unit of the late 1970's -- which was reviewed for solitude since it meet size criteria -- is a notably smaller area than what is the present OR-034-071 unit. The 3-121 unit, itself, did not provide outstanding opportunities for solitude due to a combination of its narrow configuration relative to its size, and vegetative screening by the scattered junipers and topographic screening of its rolling terrain – while resulting in some solitude opportunities and a few secluded locations -- was insufficient to provide outstanding opportunities for solitude within the unit.

4. Does the unit have outstanding opportunities for primitive and unconfined recreation?

Yes _____ No X N/A _____

Description: Hunting for common game species (primarily deer, elk, pronghorn and chukar) occurs in the unit. Other opportunities include hiking, horseback riding, backpacking, photography and general sightseeing. There are no special or unique features or activities that attract visitors to the inventory unit. Individually or in combinations the unit does not possess outstanding opportunities for primitive and unconfined recreation.

5. Does the unit have supplemental values?

Yes _____ No X N/A _____

Description: None known.

Summary of Findings and Conclusion

Unit Name and Number: OR-034-071 — Deadman Creek

Summary Results of Analysis:

- 1. Does the area meet any of the size requirements? X Yes No
- 2. Does the area appear to be natural? X Yes No
- 3. Does the area offer outstanding opportunities for solitude or a primitive and unconfined type of recreation? X Yes No NA
- 4. Does the area have supplemental values? Yes X No NA

Conclusion -- check one:

X The area, or a portion of the area, has wilderness character.

The area does not have wilderness character.

Prepared by: Robert Alward
Robert Alward, Wilderness Planner, contractor

Team Members:

<u> Steve Christensen </u>	<u> 12-15-2010 </u>
Steve Christensen, Rangeland Management Specialist	Date
<u> Daniel J. Thomas </u>	<u> 12/15/10 </u>
Dan Thomas, Range Technician	Date
<u> Gillian Wigglesworth </u>	<u> 12/15/10 </u>
Gillian Wigglesworth, Botanist	Date
<u> Michelle Cavfness </u>	<u> 12/15/10 </u>
Michelle Cavfness, Wildlife Biologist	Date
<u> Eian Ray </u>	<u> 12-15-10 </u>
Eian Ray, GIS Specialist, contractor	Date
<u> Brent Grasty </u>	<u> 12/14/10 </u>
Brent Grasty, GIS Coordinator	Date

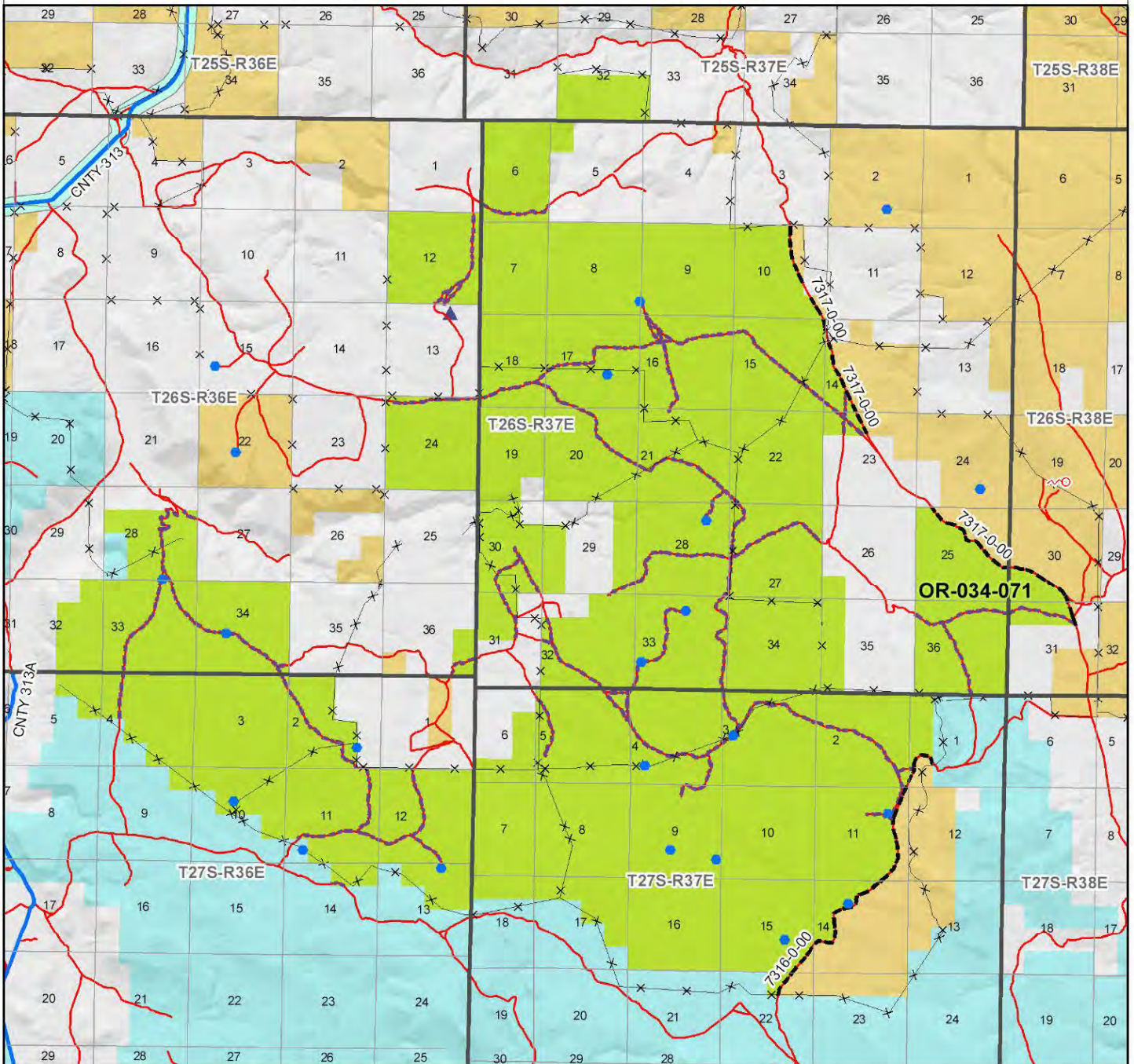
Approved by:

Pat Ryan 6/17/11
Pat Ryan, Malheur Resource Area Field Manager Date

This form documents information that constitutes an inventory finding on wilderness characteristics. It does not represent a formal land use allocation or a final agency decision subject to administrative remedies under either 43 CFR parts 4 or 1610.5-2.

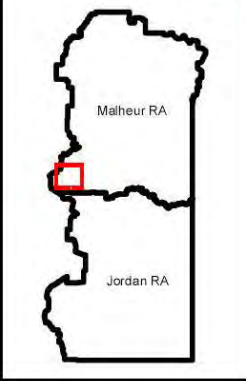
Wilderness Characteristics - Overview

Deadman Creek - OR-034-071 - Map 1 of 1



Legend

Developed Spring	Boundary Road
Wildlife Guzzler	Motorized Primitive Trail (MPT)
Earthen Reservoir	Discontinued Use
Pipeline	Routes - Outside Wild Char Unit
Trough	Major Highway
Fence	BLM Numbered & Other Routes
Storage Tank	County
Surface Mining Disturbance	Land Ownership
Sage Grouse Lek	Bureau of Land Management
Special Status Plant	State
BLM Wild Char Inventory Unit	Private
Wilderness Study Area	Other Federal Land
Mineral Material Site	
Road/Utility Right-of-Way	
Major Water Body	



Kilometers

Miles

U.S. DEPARTMENT OF THE INTERIOR
BUREAU OF LAND MANAGEMENT

VALE DISTRICT
February 22, 2010

No warranty is made by the Bureau of Land Management as to the accuracy, reliability, or completeness of these data for individual or aggregate use with other data. Original data were compiled from various sources. This information may not meet National Map Accuracy Standards. This product was developed through digital means and may be updated without notification.

--FINAL--