

Wilderness Inventory Unit Index of Documents
Dahley Well OR-034-088, 10 total pages

Page 1: Index Cover Sheet

[Page 2: Form 1 – Documentation of BLM Wilderness Inventory: Findings on Record](#)

[Page 5: Form 2 – Documentation of Current Wilderness Inventory Conditions](#)

[Page 8: Form 2 – Summary of Findings and Conclusion](#)

[Page 9: Wilderness Characteristics Overview – Dahley Well OR-034-088 Map 1 of 2](#)

[Page 10: Wilderness Characteristics-Land Treatments-Dahley Well OR-034-088 Map 2 of 2](#)

Prepared by:
U.S. Department of the Interior
Bureau of Land Management
Vale District Office
100 Oregon Street
Vale, Oregon 97918



H-6300-1-WILDERNESS INVENTORY MAINTENANCE IN BLM OREGON/WASHINGTON

APPENDIX B – INVENTORY AREA EVALUATION

Evaluation of Current Conditions:

- 1) Document and review the existing BLM wilderness inventory findings on file, if available, regarding the presence or absence of individual wilderness characteristics, using Form 1, below.
- 2) Consider relevant information regarding current conditions available in the office to identify and describe any changes to the existing information (use interdisciplinary (ID) team knowledge, aerial photographs, field observations, maps, etc.), and document your findings on Form 2, below.

When Citizen Information has been submitted regarding wilderness characteristics, document the submitted materials including: date of Submission; Name of District(s) and Field Office(s) Affected; Type of material Submitted (e.g. narrative, map, photo). Evaluate any submitted citizen information regarding the validity of proposed boundaries of the unit(s), the existence of roads and other boundary features, the size of the unit(s), and the presence or absence of wilderness characteristics based on relevant information available in the office (prior BLM inventories, ID team knowledge, aerial photographs, field observations, maps, etc.)

Conduct field reviews as necessary to verify information and to ascertain current conditions. Reach conclusions on current conditions including boundaries, size of areas and presence or absence of wilderness characteristics. Fully explain the basis for each conclusion on form 2, including any critical differences between BLM and citizen information.

Document your findings regarding current conditions for each inventoried area. Describe how the present conditions are similar to, or have changed from, the conditions documented in the original wilderness inventory. Document your findings on Form 2 for each inventory area. Cite to or attach data considered, including photographs, maps, GIS layers, field trip notes, project files, *etc.*

Year: 2010 **Unit Number/Name:** OR-034-088 -- Dahley Well

**FORM 1 -- DOCUMENTATION OF BLM WILDERNESS INVENTORY
FINDINGS ON RECORD**

1. Is there existing BLM wilderness inventory information on all or part of this area?

Yes No (If yes, and if more than one unit is within the area, list the names of those units.):

A.) Inventory Source(s) -- (X) Denotes all applicable BLM Inventory files, printed maps, or published BLM Decision documents with information pertaining to this unit.

Wilderness Inventories

- (X) 1978 – 1979 -- BLM Wilderness Inventory Units 3-15 of OR-03-02-23 Dahley Well (unpublished BLM documents in case files)
- (X) April 1979 – *Wilderness -- Proposed Initial Inventory – Roadless Areas and Islands Which Clearly Do Not have Wilderness Characteristics, Oregon and Washington*

Wilderness Decision Documents

- (X) August 1979 – *Wilderness Review – Initial Inventory, Final Decision on Public Lands Obviously Lacking Wilderness Characteristics and Announcement of Public Lands to be Intensively Inventoried for Wilderness Characteristics, Oregon and Washington* (green document)
- () October 1979 – *Wilderness Review – Intensive Inventory - Oregon, Proposed Decision on the Intensive Wilderness Inventory of Selected Areas* (grey document).
- () March 1980 – *Wilderness Review – Intensive Inventory; Final Decisions on 30 Selected Units in Southeast Oregon and Proposed Decisions on Other Intensively Inventoried Units in Oregon and Washington* (orange document)
- () November 1980 - *Wilderness Inventory – Oregon and Washington, Final Intensive Inventory Decisions* (brown document)
- () November 1981 *Stateline Intensive Wilderness Inventory Final Decision, Oregon, Idaho, Nevada, Utah* (tan document).

B.) Inventory Unit Name(s)/Number(s)

BLM 3-15 of OR-03-02-03-23 Dahley Well

C.) Map Name(s)/Number(s)

- Final Decision – Initial Wilderness Inventory Map, August 1979, Oregon
- Proposed Decision -- Intensive Wilderness Inventory of Selected Areas Map, October 1979, Oregon
- Intensive Wilderness Inventory Map, March 1980, Oregon
- Intensive Wilderness Inventory --Final Decisions Map, November 1980, Oregon.
- November, 1981 *Stateline Intensive Wilderness Inventory Final Decision, Oregon, Idaho, Nevada, Utah* (tan document).

D.) BLM District(s)/Field Office(s)

Vale District Office/ Malheur Field Office

2. BLM Inventory Findings on Record

(Existing inventory information regarding wilderness characteristics (if more than one BLM inventory unit is associated with the area, list each unit and answer each question individually for each inventory unit):

Inventory Source: See above.

Unit#/ Name	Size (historic acres)	Natural Condition? Y/N	Outstanding Solitude? Y/N	Outstanding Primitive & Unconfined Recreation? Y/N	Supplemental Values? Y/N
3-15 of OR-03-02-23 Dahley Well	6,160	N	*	*	*
TOTAL	6,160				

* -- These criteria were not specifically addressed since the unit did not meet natural condition criteria.

H-6300-1-WILDERNESS INVENTORY MAINTENANCE IN BLM OREGON/WASHINGTON

APPENDIX B – INVENTORY AREA EVALUATION

Evaluation of Current Conditions:

- 1) Document and review the existing BLM wilderness inventory findings on file, if available, regarding the presence or absence of individual wilderness characteristics, using Form 1, below.
- 2) Consider relevant information regarding current conditions available in the office to identify and describe any changes to the existing information (use interdisciplinary (ID) team knowledge, aerial photographs, field observations, maps, etc.), and document your findings on Form 2, below.

When Citizen Information has been submitted regarding wilderness characteristics, document the submitted materials including: date of Submission; Name of District(s) and Field Office(s) Affected; Type of material Submitted (e.g. narrative, map, photo). Evaluate any submitted citizen information regarding the validity of proposed boundaries of the unit(s), the existence of roads and other boundary features, the size of the unit(s), and the presence or absence of wilderness characteristics based on relevant information available in the office (prior BLM inventories, ID team knowledge, aerial photographs, field observations, maps, etc.)

Conduct field reviews as necessary to verify information and to ascertain current conditions. Reach conclusions on current conditions including boundaries, size of areas and presence or absence of wilderness characteristics. Fully explain the basis for each conclusion on form 2, including any critical differences between BLM and citizen information.

Document your findings regarding current conditions for each inventoried area. Describe how the present conditions are similar to, or have changed from, the conditions documented in the original wilderness inventory. Document your findings on Form 2 for each inventory area. Cite to or attach data considered, including photographs, maps, GIS layers, field trip notes, project files, *etc.*

FORM 2 -- DOCUMENTATION OF CURRENT WILDERNESS INVENTORY CONDITIONS

Unit Number/Name: OR-034-088 — Dahley Well

Description of Current Conditions: [Include land ownership, location, topography, vegetation features and summary of major human uses/activities.]

1. Is the unit of sufficient size?

Yes X No

Description: Refer to this inventory unit's associated Map 1 for its location. The unit has 5,632 acres of public land. The unit has nearly the same boundary features as for the BLM late 1970's wilderness characteristics inventory, except the 1970's unit included slightly more public land in the area's southwest sector. However, since then a route determined to be a motorized primitive trail (MPT) at the time has changed status to a mechanically maintained road, thus making the present OR-034-088 unit slightly smaller than the original late 1970's inventory unit. Also, more accurate means of determining area size since the late 1970's is a factor for adjustment with this OR034-088 inventory unit.

The unit's boundaries are BLM road 7364-00 on its west side; private land and County road 793 on its north side; private land parcels and a road crossing public land on its east side; and a road on its south side. The boundary roads are mechanically maintained as needed to provide for relatively regular and continuous use.

2. Is the unit in a natural condition?

Yes X No N/A

Description: The terrain consists primarily of rolling hills and mesas; mild to steep slopes are distributed throughout the unit. A branch of Bully Creek is in the unit's northern third. Elevations range from 2,700 to 3,460 feet. The vegetation consists primarily of non-native grasses and some sage brush and native rangeland grasses.

Refer to this inventory unit's associated Map 1 and Map 2 for human imprints. There are 6.3 miles of rangeland fence, 1 developed spring, and 1.5 miles of a buried water pipeline with one storage tank and 4 associated troughs within the unit. The remainder of pipeline and associated troughs are directly adjacent to the boundary road, thus considered not within the unit (unlike BLM's conclusion of the late 1970's). In the late 1970's, the visual contrast of a disc-drilled seeding was still apparent to the average visitor, with the seeding being about 1,300 acres in size. At that time, the size of this area of visual contrast relative to the size of the unit was a significant factor resulting in the unit appearing to be substantially affected by humans. Presently, there is no apparent visual

contrast of the seeded area to the average visitor, or of 1963 and 1967 chemical brush control treatments which affect some of the unit. In the northwestern corner of the unit, there presently is limited remnant visual evidence of very small 2003 and 2004 disc-drilled seedings and brush beating treatments located in the unit's northwest corner and along the unit's south boundary. Presently, even if excluding these current vegetative visual contrasts -- and considering the type, extent and distribution of the other developments within OR-34-088 -- the unit meets size criteria and appears to be affected primarily by the forces of nature with the imprints of humans substantially unnoticeable to the average visitor. This is a change from the conditions of the unit in the late 1970's.

3. Does the unit have outstanding opportunities for solitude?

Yes _____ No X N/A _____

Description: The unit lacks adequate size or density of vegetation to support sufficient screening for outstanding opportunities for solitude. Although between 4.5 and 5.5 miles long, the unit's narrow width (no greater than 2 miles and predominately less) relative to the dominant nature of its topographic features does not provide sufficient screening for outstanding opportunities for solitude.

4. Does the unit have outstanding opportunities for primitive and unconfined recreation?

Yes _____ No X N/A _____

Description: Hunting and associated hiking for common game species (primarily deer and chukar) are the primary activities occurring within the unit. However, there are no special or unique features or activities that more so attracts visitors to the inventory unit. Individually or in combination, recreation opportunities within the unit do not constitute outstanding opportunities for primitive and unconfined recreation.

5. Does the unit have supplemental values?

Yes _____ No X N/A _____

Description: None known.

Summary of Findings and Conclusion

Unit Name and Number: OR-034-088 — Dahley Well

Summary Results of Analysis:

1. Does the area meet any of the size requirements? Yes No
2. Does the area appear to be natural? Yes No
3. Does the area offer outstanding opportunities for solitude or a primitive and unconfined type of recreation? Yes No NA
4. Does the area have supplemental values? Yes No NA

Conclusion -- check one:

- The area, or a portion of the area, has wilderness character.
- The area does not have wilderness character.

Prepared by: Robert Alward
 Robert Alward, Wilderness Planner, contractor

Team Members:

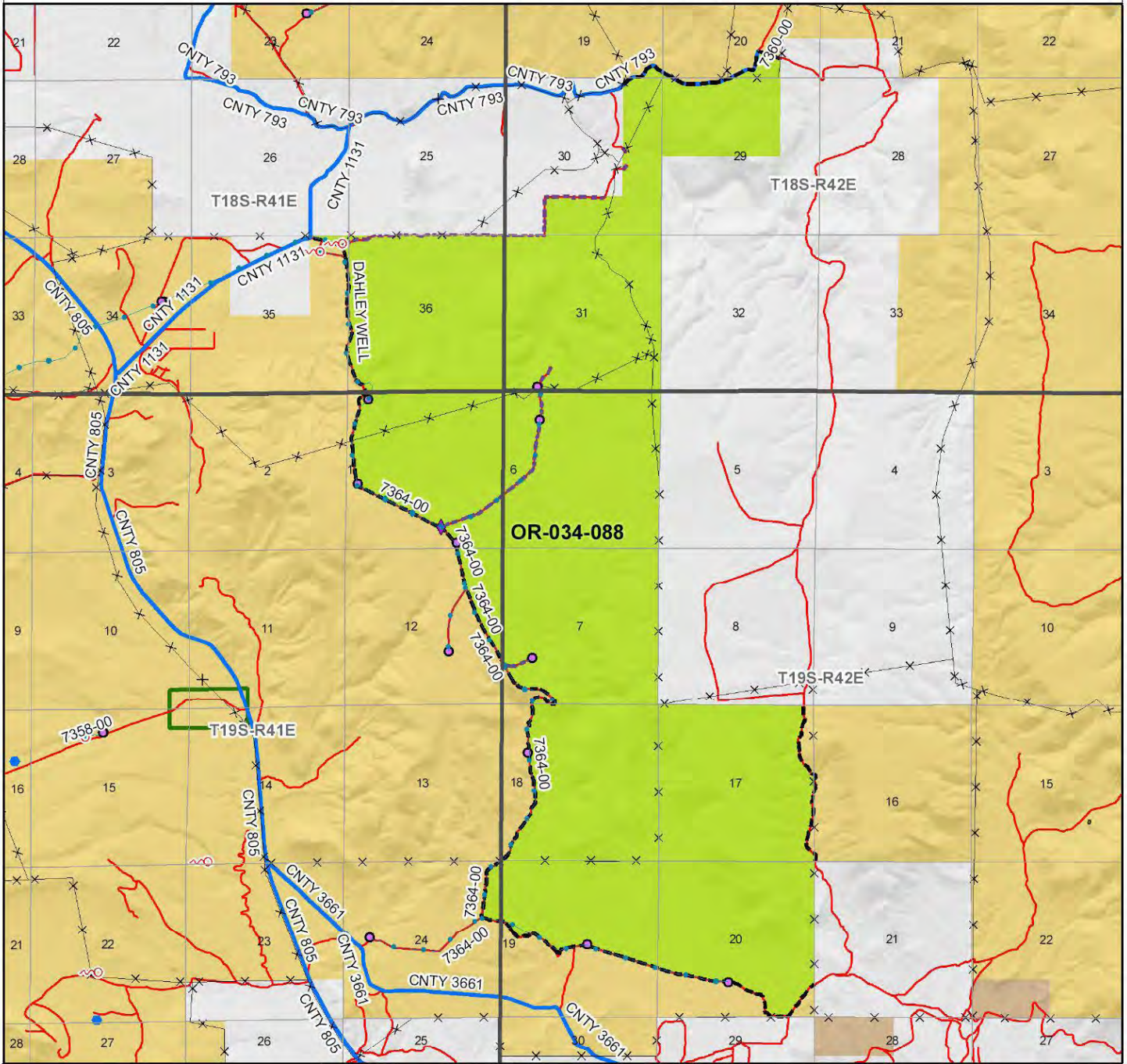
<u>Bill Lutjens</u>	12/2/10
Bill Lutjens, Rangeland Management Specialist	Date
<u>Dan Thomas</u>	12/6/10
Dan Thomas, Range Technician	Date
<u>Lynn Silva</u>	12-17-2010
Lynn Silva, Weed Coordinator	Date
<u>Gillian Wigglesworth</u>	12/6/10
Gillian Wigglesworth, Botanist	Date
<u>Michelle Caviness</u>	12/16/10
Michelle Caviness, Wildlife Biologist	Date
<u>Eian Ray</u>	12-6-10
Eian Ray, GIS Specialist, contractor	Date
<u>Brent Grasty</u>	12/9/10
Brent Grasty, GIS Coordinator	Date

Approved by: Pat Ryan 6/17/11
 Pat Ryan, Malheur Resource Area Field Manager Date

This form documents information that constitutes an inventory finding on wilderness characteristics. It does not represent a formal land use allocation or a final agency decision subject to administrative remedies under either 43 CFR parts 4 or 1610.5-2.

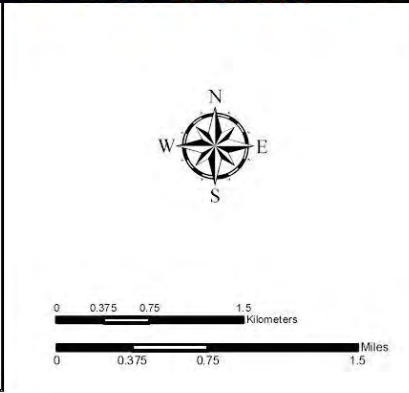
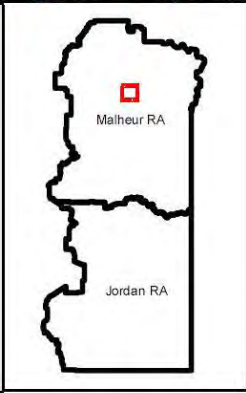
Wilderness Characteristics - Overview

Dahley Well - OR-034-088 - Map 1 of 2



Legend

<ul style="list-style-type: none"> Developed Spring Wildlife Guzzler Earthen Reservoir Pipeline Trough Fence Storage Tank Surface Mining Disturbance Sage Grouse Lek Special Status Plant BLM Wild Char Inventory Unit Wilderness Study Area Mineral Material Site Road/Utility Right-of-Way Major Water Body 	<p>Route Types - BLM Determination</p> <ul style="list-style-type: none"> Boundary Road Motorized Primitive Trail (MPT) Discontinued Use <p>Routes - Outside Wild Char Unit</p> <ul style="list-style-type: none"> Major Highway BLM Numbered & Other Routes <p>Land Ownership</p> <ul style="list-style-type: none"> Bureau of Land Management State Private Other Federal Land
---	---



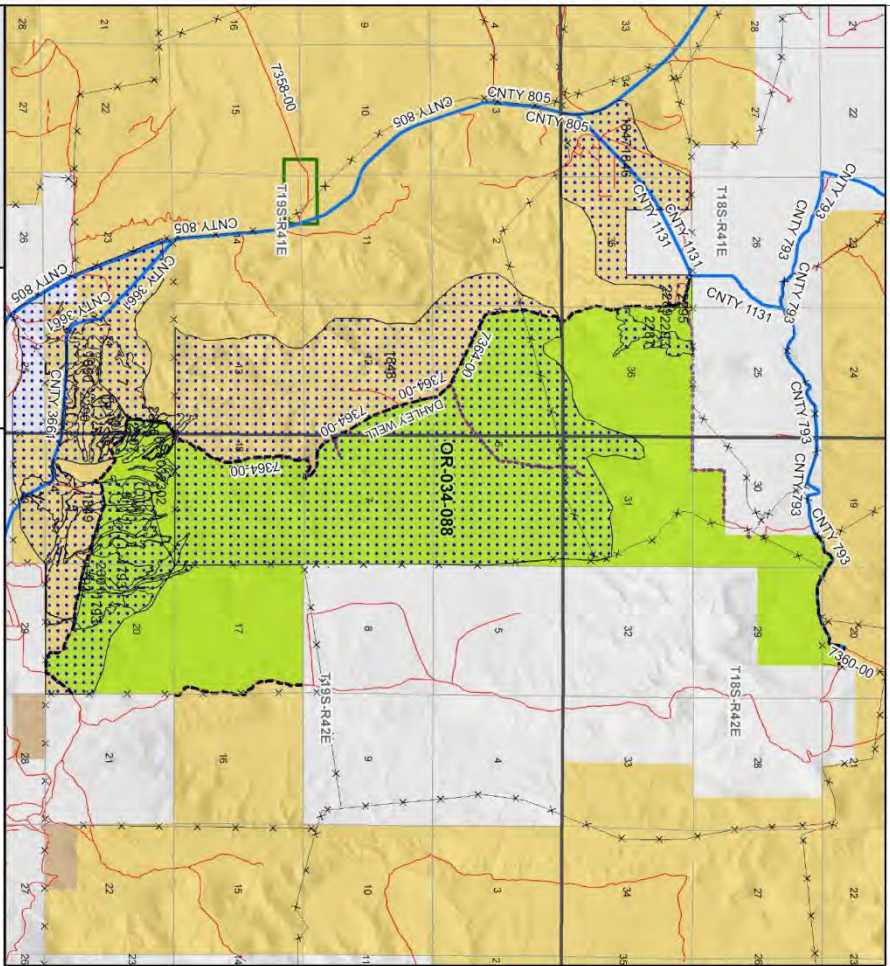
U.S. DEPARTMENT OF THE INTERIOR
BUREAU OF LAND MANAGEMENT

VALE DISTRICT
September 21, 2010

No warranty is made by the Bureau of Land Management as to the accuracy, reliability, or completeness of these data for individual or aggregate use with other data. Original data were compiled from various sources. This information may not meet National Map Accuracy Standards. This product was developed through digital means and may be updated without notification.

--FINAL--

Wilderness Characteristics - Land Treatments
Dahley Well - OR-034-088 - Map 2 of 2



Wilderness Characteristics - Land Treatments
Dahley Well - OR-034-088 - Map 2 of 2

OBJECTID *	NAME	TREATMENT TYPE	SEED GROUP	DATE
3	HARPER SEEDING	Drill Seeding	Non and Native Grass	20041201
4	HARPER SEEDING	Drill Seeding	Non and Native Grass	20041201
5	HARPER SEEDING	Drill Seeding	Non and Native Grass	20041201
6	HARPER SEEDING	Drill Seeding	Non and Native Grass	20041201
7	HARPER SEEDING	Drill Seeding	Non and Native Grass	20041201
9	HARPER SEEDING	Drill Seeding	Non and Native Grass	20041201
1793	HARPER SEEDING	Drill Seeding	Non and Native Grass	20041201
1846	BULL Y CREEK SEEDING	Chemical Treatment	Not Applicable	1967
1847	BULL Y CREEK SEEDING	Drill Seeding	Unknown	1967
1848	MESA BRUSH CONTROL	Chemical Treatment	Not Applicable	1963
1849	HARPER SEEDING	PLOW/DISC	Not Applicable	1965
1850	HARPER SEEDING	Drill Seeding	Unknown	1965
2287	BULL Y CREEK SEEDING	Brushbeat	Not Applicable	20031107
2289	BULL Y CREEK SEEDING	Brushbeat	Not Applicable	20031107
2293	BULL Y CREEK SEEDING	Drill Seeding	Non and Native Grass	20031107
2295	BULL Y CREEK SEEDING	Drill Seeding	Non and Native Grass	20031107
2299	HARPER SEEDING	Brushbeat	Not Applicable	20031209
2301	HARPER SEEDING	Brushbeat	Not Applicable	20031209
2302	HARPER SEEDING	Brushbeat	Not Applicable	20031209
2303	HARPER SEEDING	Brushbeat	Not Applicable	20031209
2305	HARPER SEEDING	Brushbeat	Not Applicable	20031209
2307	HARPER SEEDING	Brushbeat	Not Applicable	20031209

Note: The Land Treatments represented by navy blue dots on the map to the left are labeled with the treatments ObjectIDs listed in the first field of the Land Treatments table shown above. Multiple types of treatments may have been applied to the same area. For example, one treatment area may have been plowed and drill seeded - a record is shown in the table for each type of treatment.

Legend

- Land Treatment
- County Boundary
- Township/Range Boundary
- Section Boundary
- Water
- Power Line
- Other Feature

Wilderness Characteristics - Land Treatments

- Harper Seeding
- Bull Y Creek Seeding
- MESA BRUSH CONTROL

Map Information

U.S. DEPARTMENT OF THE INTERIOR
 BUREAU OF LAND MANAGEMENT

VALE DISTRICT
 September 21, 2010

Scale: 0 to 2 Kilometers

Map of Oregon showing the location of the study area in the eastern part of the state.