



**Bureau of  
Land Management**  
Cody Field Office  
1002 Blackburn Street  
Cody, WY 82414

Please report suspicious activity  
or site issues to  
**(307) 578-5900**

Cottonwood Canyon offers dramatic views of steep, vertical cliffs for hikers and advanced horseback riders. This non-motorized trail passes through BLM-managed public land, Bighorn National Forest-managed public land and State of Wyoming land. It begins at 4,750 ft. elevation and ends at 7,500 ft. elevation after 4.7 miles (about 2,800 ft. total elevation gain).

Several connections to motorized and non-motorized routes within Bighorn National Forest are possible beyond Cottonwood Creek Trail. For example, FS Road 12 connects to the Medicine Wheel National Historic Landmark, and FS Trail 054 connects to the Bucking Mule Falls National Recreation Trail.

Vegetation in Cottonwood Canyon includes narrowleaf cottonwood, willow, waterbirch, red osier dogwood, big sagebrush, juniper, mountain mahogany, Rocky Mountain maple, limber pine, Douglas fir, aspen, and bluebunch wheatgrass.

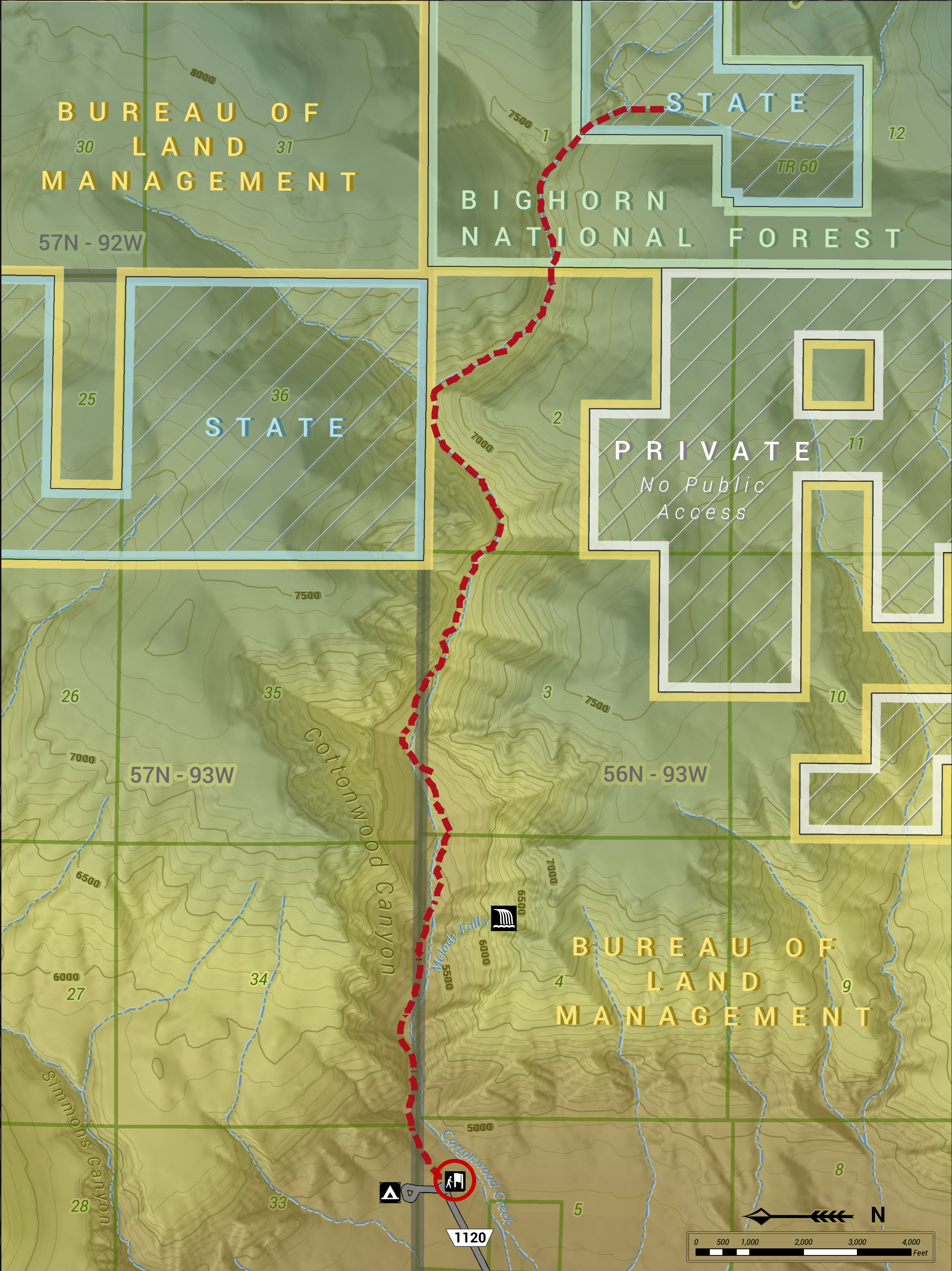
Bring drinking water, as Cottonwood Creek disappears underground at times. If using water from the creek, filter it or otherwise treat before drinking.

Melody Falls is about 1 mile from the trailhead.



Use the QR code above or visit  
<https://www.blm.gov/maps/georeferenced-PDFs>  
to download a free, georeferenced map of  
Cottonwood Creek Trail.

# COTTONWOOD CREEK TRAIL



No warranty is made by the Bureau of Land Management as to the accuracy, reliability, or completeness of these data for individual or aggregate use with other data. Original data were compiled from various sources and may be updated without notification.

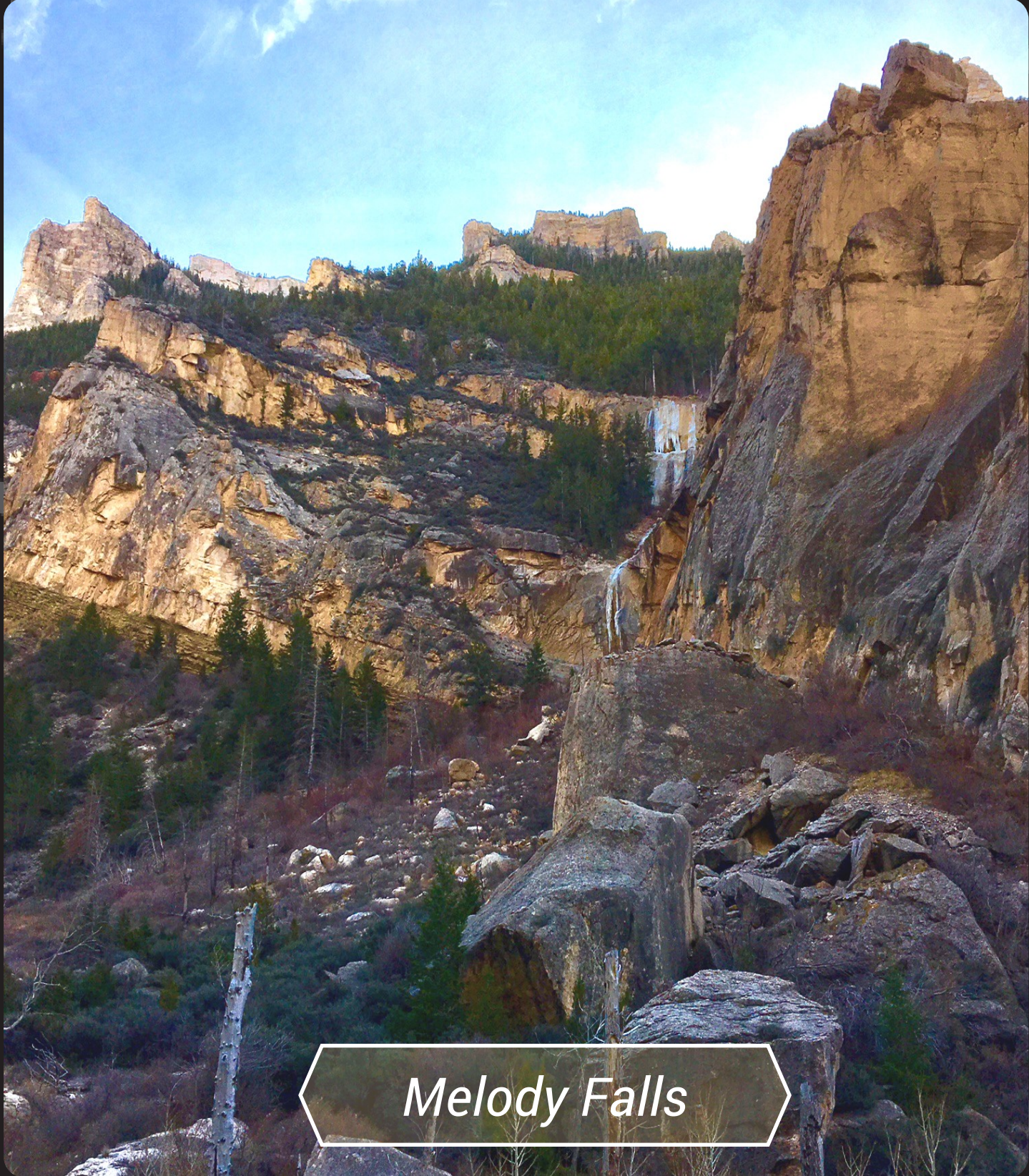
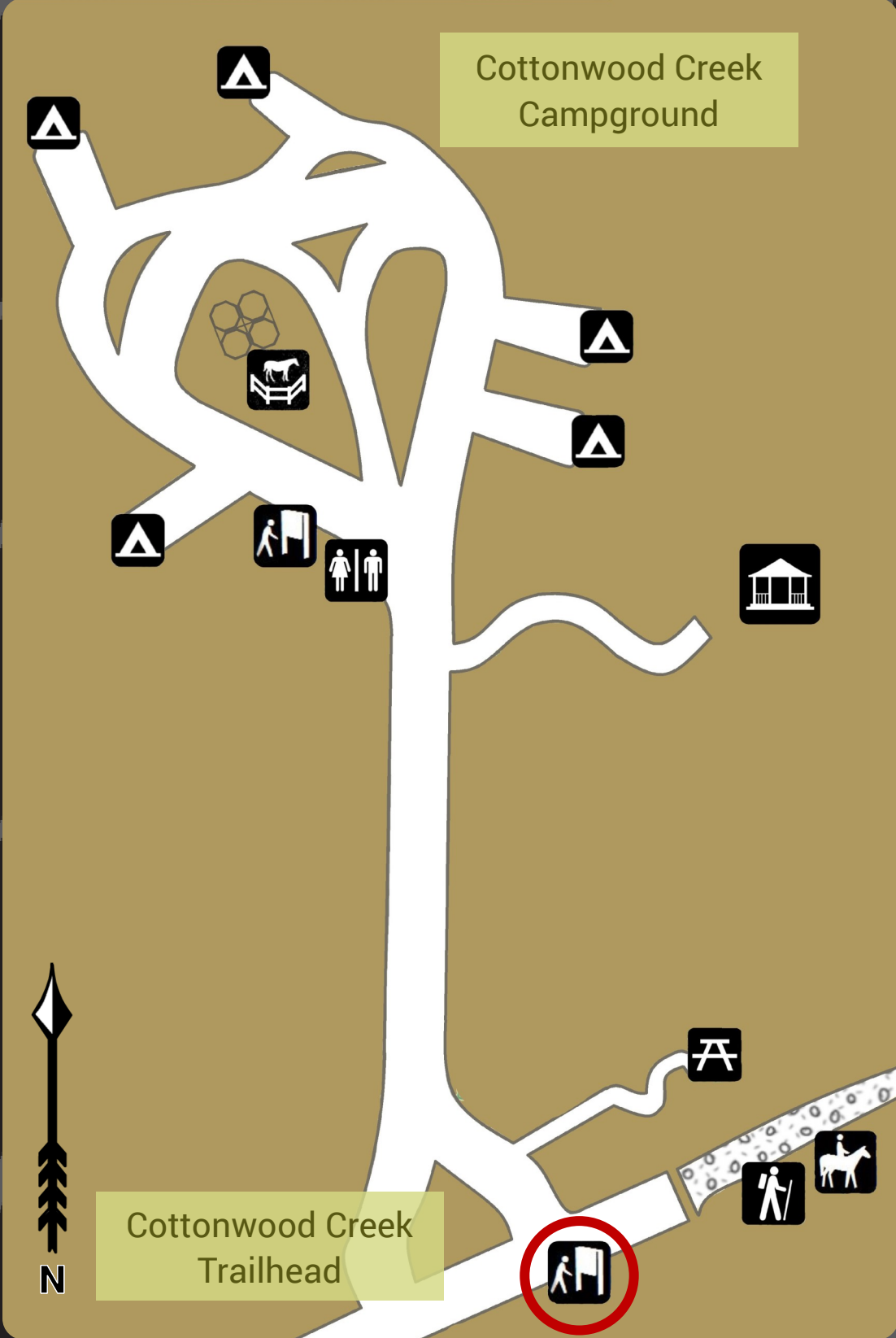


Photo Credit: BLM Wyoming

Melody Falls



LEGEND	
	Bureau of Land Management
	Forest Service Land
	State Land
	Private Land
	You Are Here
	Cottonwood Creek Trail
	Gravel Road
	Township
	Section/Tract
	BLM Road
	Information Kiosk
	Hiking Trail
	Equestrian Trail
	Restroom
	Picnic Area
	Camping Area
	Horse Corral
	Waterfall
	Gazebo

1:12,500  
Datum: NAD 83  
Projection: Lambert Conformal Conic  
Contour Interval: 100'