

Wilderness Inventory Unit Index of Documents
Cottonwood Mountain OR-034-083, 10 total pages

Page 1: Index Cover Sheet

[Page 2: Form 1 – Documentation of BLM Wilderness Inventory: Findings on Record](#)

[Page 5: Form 2 – Documentation of Current Wilderness Inventory Conditions](#)

[Page 8: Form 2 – Summary of Findings and Conclusion](#)

[Page 9: Wilderness Characteristics Overview – Cottonwood Mountain OR-034-083 Map 1 of 2](#)

[Page 10: Wilderness Characteristics-Land Treatments-Cottonwood Mountain OR-034-083 Map 2 of 2](#)

**Prepared by:
U.S. Department of the Interior
Bureau of Land Management
Vale District Office
100 Oregon Street
Vale, Oregon 97918**



H-6300-1-WILDERNESS INVENTORY MAINTENANCE IN BLM OREGON/WASHINGTON

APPENDIX B – INVENTORY AREA EVALUATION

Evaluation of Current Conditions:

- 1) Document and review the existing BLM wilderness inventory findings on file, if available, regarding the presence or absence of individual wilderness characteristics, using Form 1, below.
- 2) Consider relevant information regarding current conditions available in the office to identify and describe any changes to the existing information (use interdisciplinary (ID) team knowledge, aerial photographs, field observations, maps, etc.), and document your findings on Form 2, below.

When Citizen Information has been submitted regarding wilderness characteristics, document the submitted materials including: date of Submission; Name of District(s) and Field Office(s) Affected; Type of material Submitted (e.g. narrative, map, photo). Evaluate any submitted citizen information regarding the validity of proposed boundaries of the unit(s), the existence of roads and other boundary features, the size of the unit(s), and the presence or absence of wilderness characteristics based on relevant information available in the office (prior BLM inventories, ID team knowledge, aerial photographs, field observations, maps, etc.)

Conduct field reviews as necessary to verify information and to ascertain current conditions. Reach conclusions on current conditions including boundaries, size of areas and presence or absence of wilderness characteristics. Fully explain the basis for each conclusion on form 2, including any critical differences between BLM and citizen information.

Document your findings regarding current conditions for each inventoried area. Describe how the present conditions are similar to, or have changed from, the conditions documented in the original wilderness inventory. Document your findings on Form 2 for each inventory area. Cite to or attach data considered, including photographs, maps, GIS layers, field trip notes, project files, *etc.*

Year: 2010 **Unit Number/Name:** OR-034-083 -- Cottonwood Mountain

**FORM 1 -- DOCUMENTATION OF BLM WILDERNESS INVENTORY
FINDINGS ON RECORD**

1. Is there existing BLM wilderness inventory information on all or part of this area?

Yes No *(If yes, and if more than one unit is within the area, list the names of those units.):*

A.) Inventory Source(s) -- (X) Denotes all applicable BLM Inventory files, printed maps, or published BLM Decision documents with information pertaining to this unit.

Wilderness Inventories

- (X) 1978 – 1979 -- BLM Wilderness Inventory Units 3-2 of OR-03-01-24 Cottonwood Mountain (unpublished BLM documents in case files)
- (X) April 1979 – *Wilderness -- Proposed Initial Inventory – Roadless Areas and Islands Which Clearly Do Not have Wilderness Characteristics, Oregon and Washington*

Wilderness Decision Documents

- (X) August 1979 – *Wilderness Review – Initial Inventory, Final Decision on Public Lands Obviously Lacking Wilderness Characteristics and Announcement of Public Lands to be Intensively Inventoried for Wilderness Characteristics, Oregon and Washington* (green document)
- () October 1979 – *Wilderness Review – Intensive Inventory - Oregon, Proposed Decision on the Intensive Wilderness Inventory of Selected Areas* (grey document).
- () March 1980 – *Wilderness Review – Intensive Inventory; Final Decisions on 30 Selected Units in Southeast Oregon and Proposed Decisions on Other Intensively Inventoried Units in Oregon and Washington* (orange document)
- () November 1980 - *Wilderness Inventory – Oregon and Washington, Final Intensive Inventory Decisions* (brown document)
- () November 1981 *Stateline Intensive Wilderness Inventory Final Decision, Oregon, Idaho, Nevada, Utah* (tan document).

B.) Inventory Unit Name(s)/Number(s)

BLM 3-2 of OR-03-01-24 Cottonwood Mountain

C.) Map Name(s)/Number(s)

- Final Decision – Initial Wilderness Inventory Map, August 1979, Oregon
- Proposed Decision -- Intensive Wilderness Inventory of Selected Areas Map, October 1979, Oregon
- Intensive Wilderness Inventory Map, March 1980, Oregon
- Intensive Wilderness Inventory --Final Decisions Map, November 1980, Oregon.
- November, 1981 *Stateline Intensive Wilderness Inventory Final Decision, Oregon, Idaho, Nevada, Utah* (tan document).

D.) BLM District(s)/Field Office(s)

Vale District Office/ Malheur Field Office

2. BLM Inventory Findings on Record

(Existing inventory information regarding wilderness characteristics (if more than one BLM inventory unit is associated with the area, list each unit and answer each question individually for each inventory unit):

Inventory Source: See above.

Unit#/ Name	Size (historic acres)	Natural Condition? Y/N	Outstanding Solitude? Y/N	Outstanding Primitive & Unconfined Recreation? Y/N	Supplemental Values? Y/N
3-2 of OR-03-01-24 Cottonwood Mountain	6,440	N	*	*	*
TOTAL	6,440				

* -- These criteria were not addressed during the inventory of this unit, since the unit did not meet natural condition criteria.

H-6300-1-WILDERNESS INVENTORY MAINTENANCE IN BLM OREGON/WASHINGTON

APPENDIX B – INVENTORY AREA EVALUATION

Evaluation of Current Conditions:

- 1) Document and review the existing BLM wilderness inventory findings on file, if available, regarding the presence or absence of individual wilderness characteristics, using Form 1, below.
- 2) Consider relevant information regarding current conditions available in the office to identify and describe any changes to the existing information (use interdisciplinary (ID) team knowledge, aerial photographs, field observations, maps, etc.), and document your findings on Form 2, below.

When Citizen Information has been submitted regarding wilderness characteristics, document the submitted materials including: date of Submission; Name of District(s) and Field Office(s) Affected; Type of material Submitted (e.g. narrative, map, photo). Evaluate any submitted citizen information regarding the validity of proposed boundaries of the unit(s), the existence of roads and other boundary features, the size of the unit(s), and the presence or absence of wilderness characteristics based on relevant information available in the office (prior BLM inventories, ID team knowledge, aerial photographs, field observations, maps, etc.)

Conduct field reviews as necessary to verify information and to ascertain current conditions. Reach conclusions on current conditions including boundaries, size of areas and presence or absence of wilderness characteristics. Fully explain the basis for each conclusion on form 2, including any critical differences between BLM and citizen information.

Document your findings regarding current conditions for each inventoried area. Describe how the present conditions are similar to, or have changed from, the conditions documented in the original wilderness inventory. Document your findings on Form 2 for each inventory area. Cite to or attach data considered, including photographs, maps, GIS layers, field trip notes, project files, *etc.*

FORM 2 -- DOCUMENTATION OF CURRENT WILDERNESS INVENTORY CONDITIONS

Unit Number/Name: OR-034-083 — Cottonwood Mountain

Description of Current Conditions: [Include land ownership, location, topography, vegetation features and summary of major human uses/activities.]

1. Is the unit of sufficient size?

Yes X No

Description: Refer to this inventory unit's associated Map 1 for its location. The unit has 7,655 acres of public land. The unit is somewhat larger than BLM's late 1970's inventory unit of this area; the primary difference in acreage is a combination of a land exchange with the State of Oregon resulted in additional lands added to this roadless area, and also to improved methods of attaining more accurate measurements than what was available in the late 1970's.

The unit's boundaries are BLM roads 7361-00, 7362-00 and another road segment traversing public land on its west/southwest side; BLM road 7362-00 and private land on its north side; and BLM road 7363-00, another road traversing public land and private land on its east side. Another boundary feature combination is a 1.1 mile cherry-stem BLM road 7361-A0. The boundary roads are mechanically maintained as needed to provide for relatively regular and continuous use.

2. Is the unit in a natural condition?

Yes X No N/A

Description: The terrain consists of rolling hills and moderate to steep-sloped ridges associated primarily with partial watersheds of Kern, Mud, Turner, North Fork Willow, and South Fork Willow creeks. Combined, the tributaries and associated topography of these drainages are multi-directional within the unit, with an overall east to southeast orientation of the creeks' main channels. Elevations range from 2,900 to 5,420 feet. Vegetation consists primarily of sagebrush and both native and non-native rangeland grasses.

Refer to this unit's associated Map 1 and Map 2 for human imprints. There are 7.7 miles of 9 motorized primitive trails (MPTs), 9.2 miles of rangeland fences, 6 earthen reservoirs, 10 developed springs, one wildlife guzzler, and 0.2 mile of a buried pipeline in section 24. These are of the same types and of the general extent of developments as documented in the late 1970's, although this maintenance inventory indicates 5 rather than 4 reservoirs; the presence –albeit since 1968 -- of a wildlife guzzler; and the number of developed springs are clarified herein (vs. "several springs" in BLM's late 1970's inventory). The 1979 inventory stated "fire lookout" is no longer present, but its concrete

pad remains (at the end of the cherry-stem road; not depicted on Map 1 or Map 2). There remains no significant visual contrast associated with two 1983 prescribed burns and two associated disc-drilled non-native grass seedings in the southern-most area of the inventory unit. There remains no visual contrast of an abandoned route in section 9. Unlike in the late 1970's, the present BLM interdisciplinary team concludes that due to the types, extent, and spatial distribution between the human developments – relative to the unit's size -- the area appears to be affected primarily by the forces of nature with the imprint of humans substantially unnoticeable to the average visitor.

3. Does the unit have outstanding opportunities for solitude?

Yes _____ No X N/A _____

Description: The unit has insufficient vegetative cover for screening between visitors to provide for outstanding opportunities for solitude. The unit's configuration is such that its southern-most area squeezes down to an area not greater than 2 miles long (east-west) and mostly less than a mile – to a quarter mile -- wide. Its northeastern sector is also narrowed to a north-south width of no greater than a mile. The configurations and the topographic properties of these lower elevations, rolling terrain sectors of the unit include an estimated approximate third of the unit, and provides nominal to no aid in providing settings for outstanding opportunities for solitude. The configuration of the remainder of the unit is approximately 2.5 to 3.5 miles by 3 miles in shape. Of this remaining area, its multiple drainage patterns and range of elevation (approximately 3,200 to 5,420 feet) does possess settings wherein a visitor can experience a sense of isolation; however, such opportunities are limited by the area's relatively small size, resulting in the opportunities not being outstanding as an element of wilderness character in this area, nor within the unit as a whole.

4. Does the unit have outstanding opportunities for primitive and unconfined recreation?

Yes _____ No X N/A _____

Description: The primary recreation is hunting of common game species (primarily deer, elk and chukar) and associated hiking. The unit possesses no special or unique features which would more so draw visitors to it. Individually or in combinations, the activities do not provide outstanding opportunities for primitive and unconfined recreation.

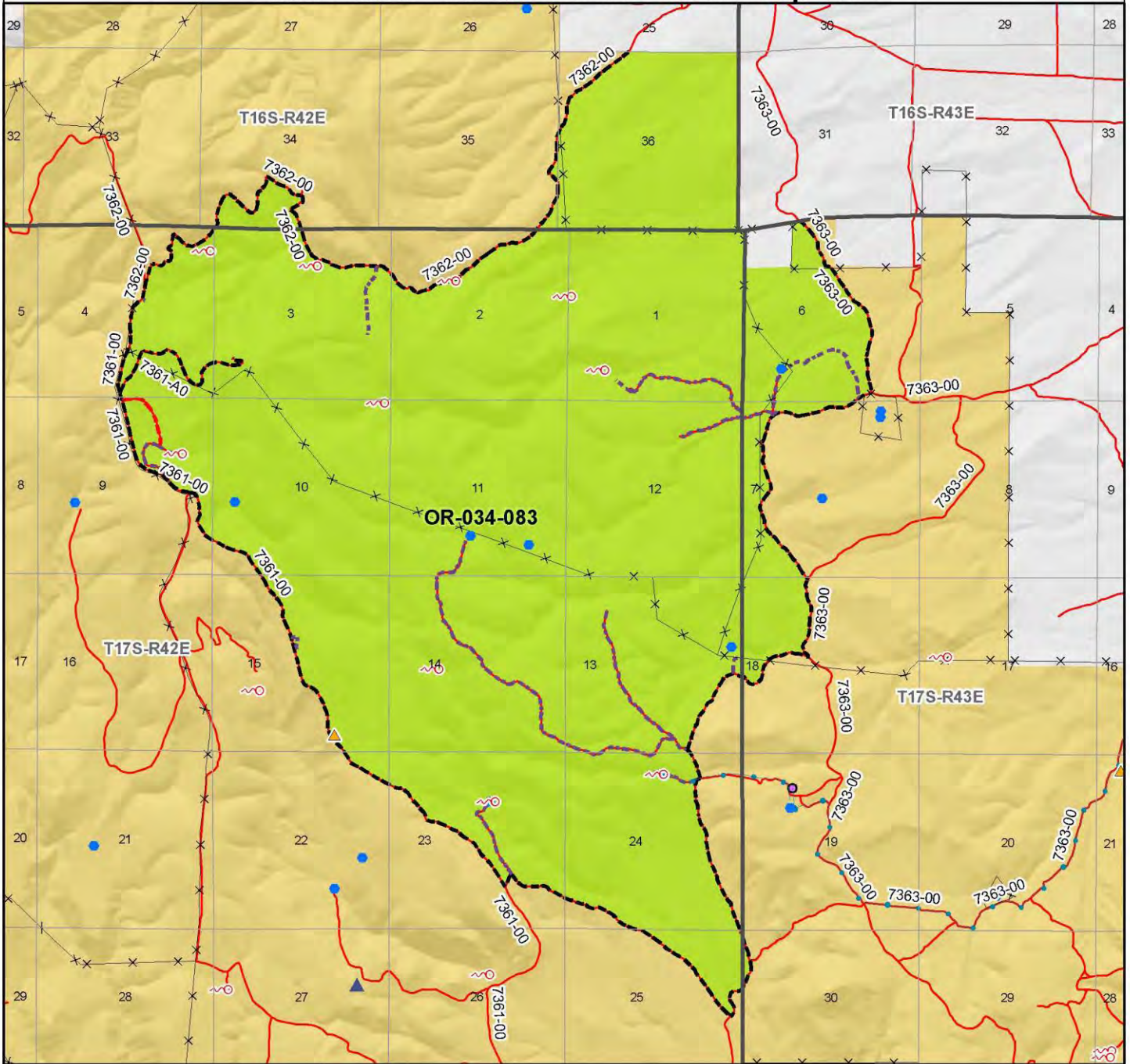
5. Does the unit have supplemental values?

Yes _____ No X N/A _____

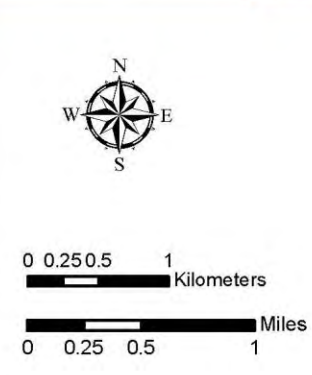
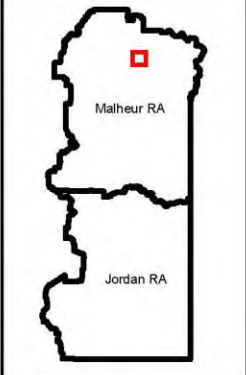
Description: None known.

Wilderness Characteristics - Overview

Cottonwood Mountain - OR-034-083 - Map 1 of 2



Legend	
	Developed Spring
	Wildlif Guzzler
	Earthen Reservoir
	Pipeline
	Trough
	Fence
	Storage Tank
	Surface Mining Disturbance
	Sage Grouse Lek
	Special Status Plant
	BLM Wild Char Inventory Unit
	Wilderness Study Area
	Mineral Material Site
	Road/Utility Right-of-Way
	Major Water Body
Route Types - BLM Determination	
	Boundary Road
	Motorized Primitive Trail (MPT)
	Discontinued Use
Routes - Outside Wild Char Unit	
	County
	Major Highway
	BLM Numbered & Other Routes
Land Ownership	
	Bureau of Land Management
	State
	Private
	Other Federal Land



U.S. DEPARTMENT OF THE INTERIOR
BUREAU OF LAND MANAGEMENT



VALE DISTRICT
September 22, 2010

No warranty is made by the Bureau of Land Management as to the accuracy, reliability, or completeness of these data for individual or aggregate use with other data. Original data were compiled from various sources. This information may not meet National Map Accuracy Standards. This product was developed through digital means and may be updated without notification.

--FINAL--

