

Wilderness Inventory Unit Index of Documents
Cottonwood Creek OR-034-084, 35 total pages

Page 1: Index Cover Sheet

[Page 2: Form 1 – Documentation of BLM Wilderness Inventory: Findings on Record](#)

[Page 5: Form 2 – Documentation of Current Wilderness Inventory Conditions](#)

[Page 8: Form 2 – Summary of Findings and Conclusion](#)

[Page 9: Wilderness Characteristics Overview – Cottonwood Creek OR-034-084 Map 1 of 2](#)

[Page 10: Wilderness Characteristics-Land Treatments-Cottonwood Creek OR-034-084 Map 2 of 2](#)

[Page 11: Wilderness Characteristics – BLM Photo Points – Cottonwood Creek Map & Log](#)

[Page 12: OR-034-084 Cottonwood Creek BLM Photos](#)

**Prepared by:
U.S. Department of the Interior
Bureau of Land Management
Vale District Office
100 Oregon Street
Vale, Oregon 97918**



H-6300-1-WILDERNESS INVENTORY MAINTENANCE IN BLM OREGON/WASHINGTON

APPENDIX B – INVENTORY AREA EVALUATION

Evaluation of Current Conditions:

- 1) Document and review the existing BLM wilderness inventory findings on file, if available, regarding the presence or absence of individual wilderness characteristics, using Form 1, below.
- 2) Consider relevant information regarding current conditions available in the office to identify and describe any changes to the existing information (use interdisciplinary (ID) team knowledge, aerial photographs, field observations, maps, etc.), and document your findings on Form 2, below.

When Citizen Information has been submitted regarding wilderness characteristics, document the submitted materials including: date of Submission; Name of District(s) and Field Office(s) Affected; Type of material Submitted (e.g. narrative, map, photo). Evaluate any submitted citizen information regarding the validity of proposed boundaries of the unit(s), the existence of roads and other boundary features, the size of the unit(s), and the presence or absence of wilderness characteristics based on relevant information available in the office (prior BLM inventories, ID team knowledge, aerial photographs, field observations, maps, etc.)

Conduct field reviews as necessary to verify information and to ascertain current conditions. Reach conclusions on current conditions including boundaries, size of areas and presence or absence of wilderness characteristics. Fully explain the basis for each conclusion on form 2, including any critical differences between BLM and citizen information.

Document your findings regarding current conditions for each inventoried area. Describe how the present conditions are similar to, or have changed from, the conditions documented in the original wilderness inventory. Document your findings on Form 2 for each inventory area. Cite to or attach data considered, including photographs, maps, GIS layers, field trip notes, project files, *etc.*

Year: 2010 Unit Number/Name: OR-034-084 — Cottonwood Creek

**FORM 1 -- DOCUMENTATION OF BLM WILDERNESS INVENTORY
FINDINGS ON RECORD**

1. Is there existing BLM wilderness inventory information on all or part of this area?

Yes X No _____ (If yes, and if more than one unit is within the area, list the names of those units.):

A.) Inventory Source(s) -- (X) Denotes all applicable BLM Inventory files, printed maps, or published BLM Decision documents with information pertaining to this unit.

Wilderness Inventories

- (X) 1978-1980 – BLM Wilderness Inventory Unit 3-22 of OR-03-02-40 Cottonwood Creek (unpublished BLM documents in case files)
- () April 1979 – *Wilderness -- Proposed Initial Inventory – Roadless Areas and Islands Which Clearly Do Not have Wilderness Characteristics, Oregon and Washington*

Wilderness Decision Documents

- (X) August 1979 – *Wilderness Review – Initial Inventory, Final Decision on Public Lands Obviously Lacking Wilderness Characteristics and Announcement of Public Lands to be Intensively Inventoried for Wilderness Characteristics, Oregon and Washington* (green document)
- () October 1979 – *Wilderness Review – Intensive Inventory - Oregon, Proposed Decision on the Intensive Wilderness Inventory of Selected Areas* (grey document)
- (X) March 1980 – *Wilderness Review – Intensive Inventory; Final Decisions on 30 Selected Units in Southeast Oregon and Proposed Decisions on Other Intensively Inventoried Units in Oregon and Washington* (orange document)
- (X) November 1980 - *Wilderness Inventory – Oregon and Washington, Final Intensive Inventory Decisions* (brown document)
- () November 1981 *Stateline Intensive Wilderness Inventory Final Decision, Oregon, Idaho, Nevada, Utah* (tan document)

B.) Inventory Unit Name(s)/Number(s)

BLM 3-22 of OR-03-02-40 Cottonwood Creek

C.) Map Name(s)/Number(s)

- Final Decision – Initial Wilderness Inventory Map, August 1979, Oregon
- Proposed Decision -- Intensive Wilderness Inventory of Selected Areas Map, October 1979, Oregon
- Intensive Wilderness Inventory Map, March 1980, Oregon
- Intensive Wilderness Inventory --Final Decisions Map, November 1980, Oregon
- November, 1981 *Stateline Intensive Wilderness Inventory Final Decision, Oregon, Idaho, Nevada, Utah* (tan document)

D.) BLM District(s)/Field Office(s)

Vale District/Malheur Resource Area

2. BLM Inventory Findings on Record

(Existing inventory information regarding wilderness characteristics (if more than one BLM inventory unit is associated with the area, list each unit and answer each question individually for each inventory unit):

Inventory Source: See above.

Unit#/Name	Size (historic acres)	Natural Condition? Y/N	Outstanding Solitude? Y/N	Outstanding Primitive & Unconfined Recreation? Y/N	Supplemental Values? Y/N
3-22 of OR-03-02-40 Cottonwood Creek	11,560	N	N	N	N
TOTAL	11,560				

H-6300-1-WILDERNESS INVENTORY MAINTENANCE IN BLM OREGON/WASHINGTON

APPENDIX B – INVENTORY AREA EVALUATION

Evaluation of Current Conditions:

- 1) Document and review the existing BLM wilderness inventory findings on file, if available, regarding the presence or absence of individual wilderness characteristics, using Form 1, below.
- 2) Consider relevant information regarding current conditions available in the office to identify and describe any changes to the existing information (use interdisciplinary (ID) team knowledge, aerial photographs, field observations, maps, etc.), and document your findings on Form 2, below.

When Citizen Information has been submitted regarding wilderness characteristics, document the submitted materials including: date of Submission; Name of District(s) and Field Office(s) Affected; Type of material Submitted (e.g. narrative, map, photo). Evaluate any submitted citizen information regarding the validity of proposed boundaries of the unit(s), the existence of roads and other boundary features, the size of the unit(s), and the presence or absence of wilderness characteristics based on relevant information available in the office (prior BLM inventories, ID team knowledge, aerial photographs, field observations, maps, etc.)

Conduct field reviews as necessary to verify information and to ascertain current conditions. Reach conclusions on current conditions including boundaries, size of areas and presence or absence of wilderness characteristics. Fully explain the basis for each conclusion on form 2, including any critical differences between BLM and citizen information.

Document your findings regarding current conditions for each inventoried area. Describe how the present conditions are similar to, or have changed from, the conditions documented in the original wilderness inventory. Document your findings on Form 2 for each inventory area. Cite to or attach data considered, including photographs, maps, GIS layers, field trip notes, project files, *etc.*

FORM 2 -- DOCUMENTATION OF CURRENT WILDERNESS INVENTORY CONDITIONS

Unit Number/Name: OR-034-084 — Cottonwood Creek

Description of Current Conditions: [Include land ownership, location, topography, vegetation features and summary of major human uses/activities.]

1. Is the unit of sufficient size?

Yes X No

Description: Refer to this inventory unit's associated Map 1 for its location. The unit has 12,903 acres of public land. The unit's boundaries are nearly the same as the late 1970's wilderness characteristics inventory. The difference in acreage is due to (A) the unit now includes some additional public land in its southwest sector due to changes in status of a route from what BLM determined then to be a road to what presently is partially a motorized primitive trail (MPT) and partially not present at all as a vehicular route; and (B) improved methods since the late 1970's to more accurately measure an area's size.

Boundaries of the unit include the BLM 7360-00 road and private land on its west side; BLM 7362-00 road and private land on its north side; a private parcel, a BLM designated minerals material area and BLM roads 7361-00 and 034-RT54 on its east side; and, another road traversing public land on its south side. The roads are mechanically maintained as needed to allow for relatively regular and continuous use. (Note: This unit's file has BLM photos of the 034-RT54 route segment [and an associated Photo Point Map/Log] -- although it is relatively rugged, it continues to be provided what mechanical maintenance is required to allow for relatively regular and continuous use.)

2. Is the unit in a natural condition?

Yes No X N/A

Description: The unit is approximately 7.5 to 9.5 miles long, but predominately no greater than 2.5 miles wide with its northern 2 miles being one mile wide and its southern approximate 2.5 miles being 2.5 to 3.5 miles wide. The topography consists of small valley bottoms and rolling hills. The Cottonwood Creek drainage is the main topographic feature. Shallow rim rock occurs in the south. Elevations range between 2,700 to 5,960 feet. Predominate vegetation consists of small pockets of wheatgrass seeding, low sagebrush, bitterbrush and native rangeland grasses.

Refer to this inventory unit's associated Map 1 and Map 2 for human imprints. There are 17.2 miles of rangeland fences (which, in part, create essentially 2 enclosures near the unit's north boundary), 3 earthen reservoirs, 7 developed springs, 8.6 miles of 9 MPTs, two specific sites of hardrock mining surface scarring, one water trough associated with a

0.1 mile of buried water pipeline, and remnants of a wildlife guzzler close to the unit's south boundary road. There remains faint visual evidence of one abandoned vehicle route. There remains no visual contrast of two brush control/disc-drilled grass seedings which occurred in 1965 and 1969. Remnant visual contrast of linear appearing disc-plowed rows are distinguishable from 2005 buckbrush seedings which – within this unit, about 1,000 acres -- are located along the southern-most boundary of the unit. Individually, the developments do not appear obtrusive. However, the majority of them are relatively close to each other and several of them can be seen within a short distance. Collectively, they dominate the landscape to an extent resulting in them being substantially noticeable; the unit does not appear to be in a substantially natural condition to the average visitor. This is the same conclusion as the late 1970's BLM inventory of the same area.

3. Does the unit have outstanding opportunities for solitude?

Yes _____ No X N/A _____

Description: The Cottonwood Creek drainage offers limited opportunity for solitude. However, the drainage does not provide sufficient topographic or vegetative screening to provide for outstanding opportunities for solitude. The rolling hills in the rest of the unit offer little concealment. Scattered aspen trees around certain springs provide limited vegetative screening. The unit's predominately narrow configuration combined with the limited amount of vegetative and topographic screening results in the unit not containing outstanding opportunities for solitude. This is the same conclusion as the late 1970's BLM inventory of the same area.

4. Does the unit have outstanding opportunities for primitive and unconfined recreation?

Yes _____ No X N/A _____

Description: Hunting for common game species (primarily deer, chukar and elk) occurs in the unit. Other opportunities include hiking, horseback riding, backpacking, and general sightseeing. However, there are no special or unique features or activities that attract visitors to the inventory unit. Individually or in combinations the unit does not possess outstanding opportunities for primitive and unconfined recreation. This is the same conclusion as the late 1970's BLM inventory of the same area.

5. Does the unit have supplemental values?

Yes _____ No X N/A _____

Description: None known.

Summary of Findings and Conclusion

Unit Name and Number: OR-034-084 — Cottonwood Creek

Summary Results of Analysis:

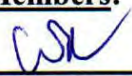
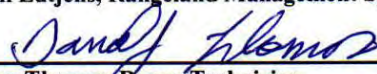
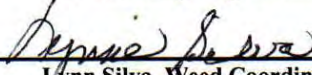
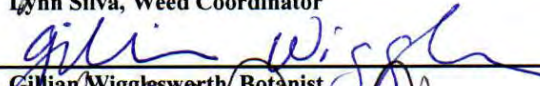
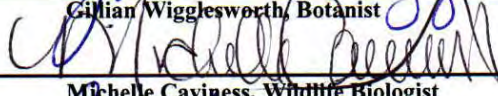
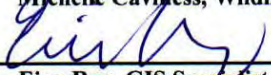
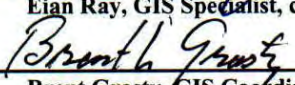
1. Does the area meet any of the size requirements? Yes No
2. Does the area appear to be natural? Yes No
3. Does the area offer outstanding opportunities for solitude or a primitive and unconfined type of recreation? Yes No NA
4. Does the area have supplemental values? Yes No NA

Conclusion -- check one:

- The area, or a portion of the area, has wilderness character.
- The area does not have wilderness character.

Prepared by: 
 Robert Alward, Wilderness Planner, contractor

Team Members:

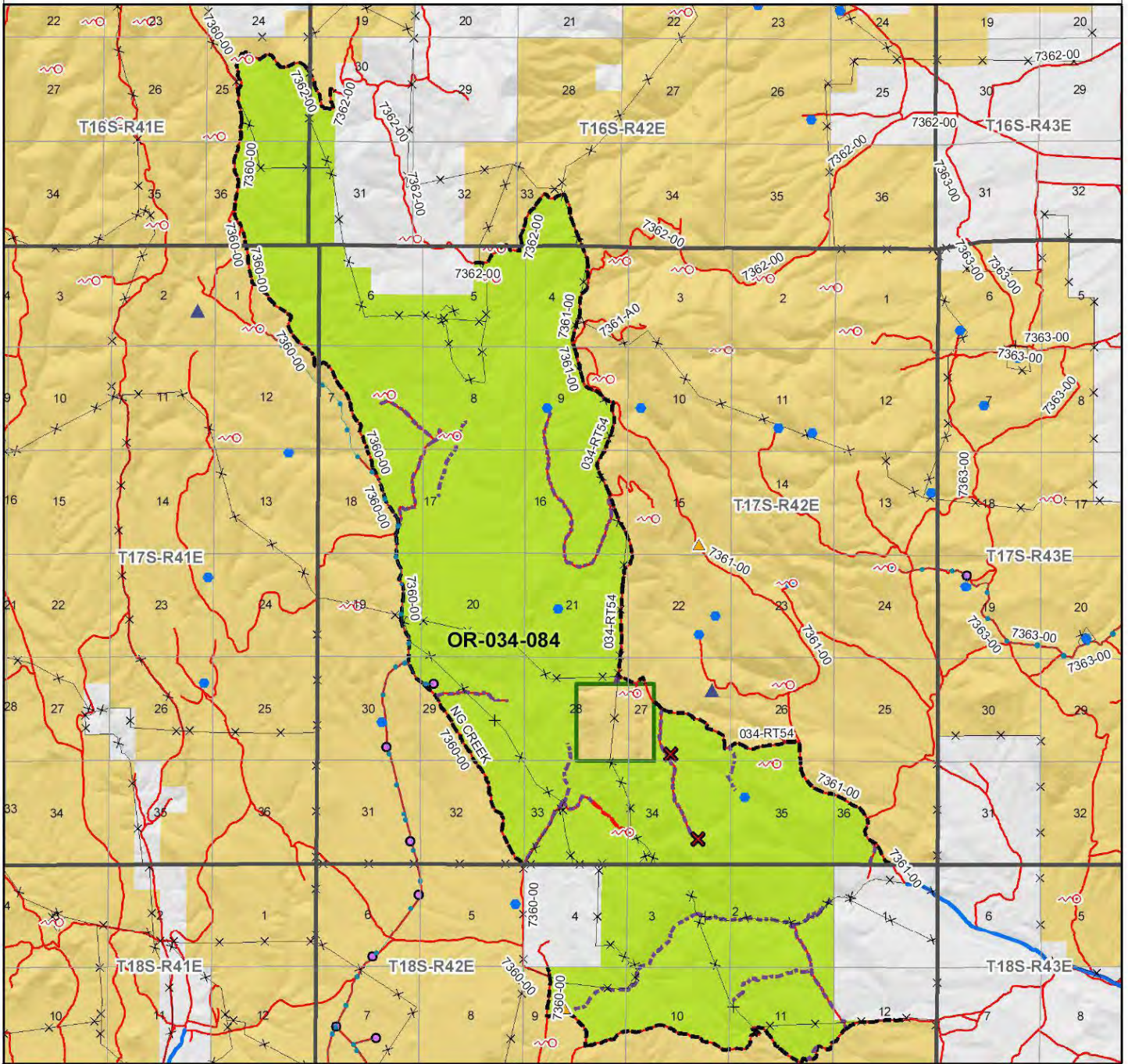
<u></u>	<u>12/7/10</u>
Bill Lutjens, Rangeland Management Specialist	Date
<u></u>	<u>12/6/10</u>
Dan Thomas, Range Technician	Date
<u></u>	<u>11-16-2010</u>
Lynn Silva, Weed Coordinator	Date
<u></u>	<u>12/6/10</u>
Gillian Wigglesworth, Botanist	Date
<u></u>	<u>12/6/10</u>
Michelle Caviness, Wildlife Biologist	Date
<u></u>	<u>12-6-10</u>
Eian Ray, GIS Specialist, contractor	Date
<u></u>	<u>12/9/10</u>
Brent Grasty, GIS Coordinator	Date

Approved by:  12/13/10
 Pat Ryan, Malheur Resource Area Field Manager Date

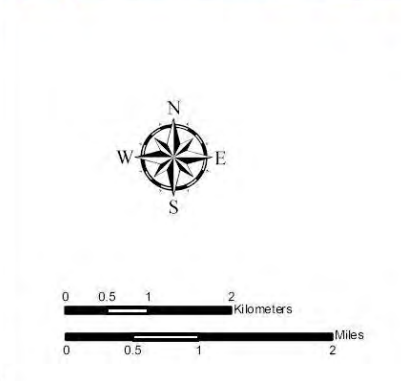
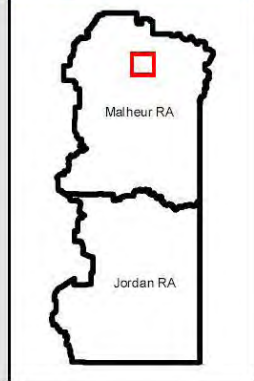
This form documents information that constitutes an inventory finding on wilderness characteristics. It does not represent a formal land use allocation or a final agency decision subject to administrative remedies under either 43 CFR parts 4 or 1610.5-2.

Wilderness Characteristics - Overview

Cottonwood Creek - OR-034-084 - Map 1 of 2



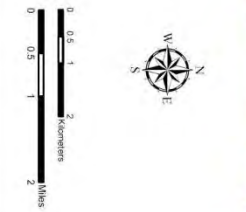
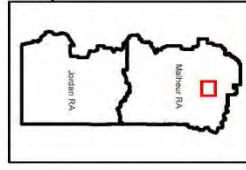
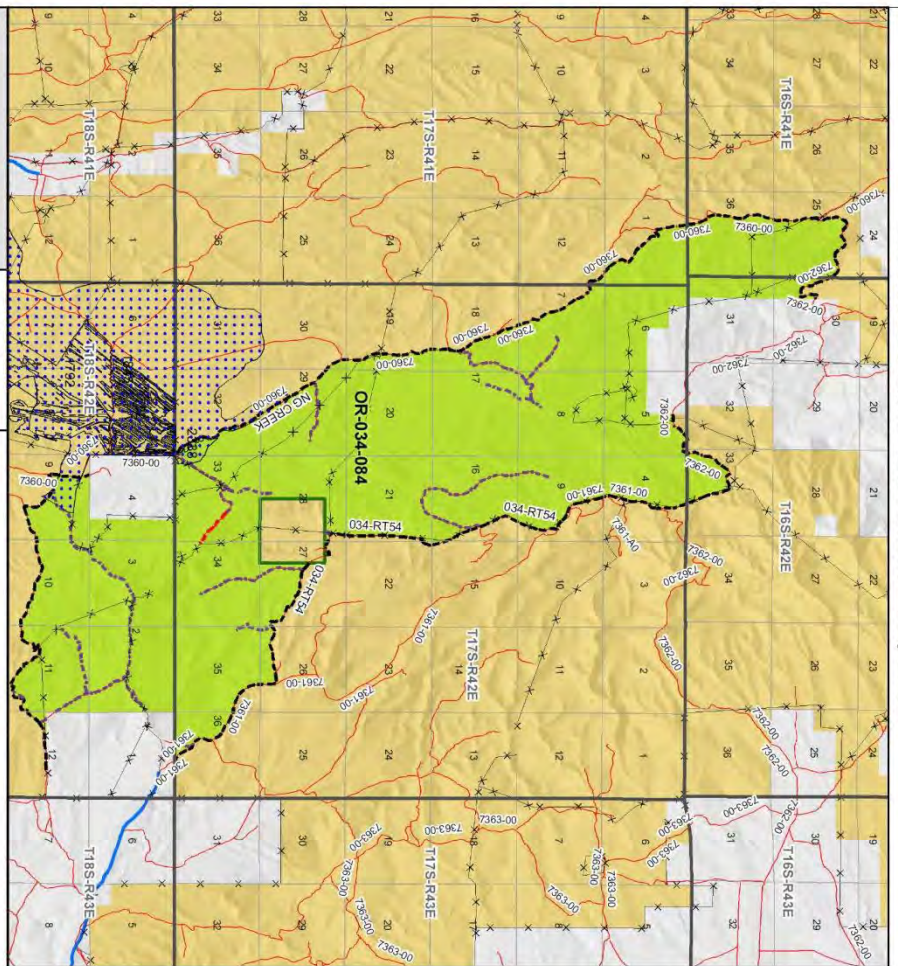
Legend	
Developed Spring	Route Types - BLM Determination
Wildlife Guzzler	Boundary Road
Earthen Reservoir	Motorized Primitive Trail (MPT)
Pipeline	Discontinued Use
Trough	Routes - Outside Wild Char Unit
Fence	County
Storage Tank	Major Highway
Surface Mining Disturbance	BLM Numbered & Other Routes
Sage Grouse Lek	Land Ownership
Special Status Plant	Bureau of Land Management
BLM Wild Char Inventory Unit	State
Wilderness Study Area	Private
Mineral Material Site	Other Federal Land
Road/Utility Right-of-Way	
Major Water Body	



U.S. DEPARTMENT OF THE INTERIOR
 BUREAU OF LAND MANAGEMENT

VALE DISTRICT
 July 8, 2010
No warranty is made by the Bureau of Land Management as to the accuracy, reliability, or completeness of these data for individual or aggregate use with other data. Original data were compiled from various sources. This information may not meet National Map Accuracy Standards. This product was developed through digital means and may be updated without notification.
--FINAL--

**Wilderness Characteristics - Land Treatments
Cottonwood Creek - OR-034-084 - Map 2 of 2**



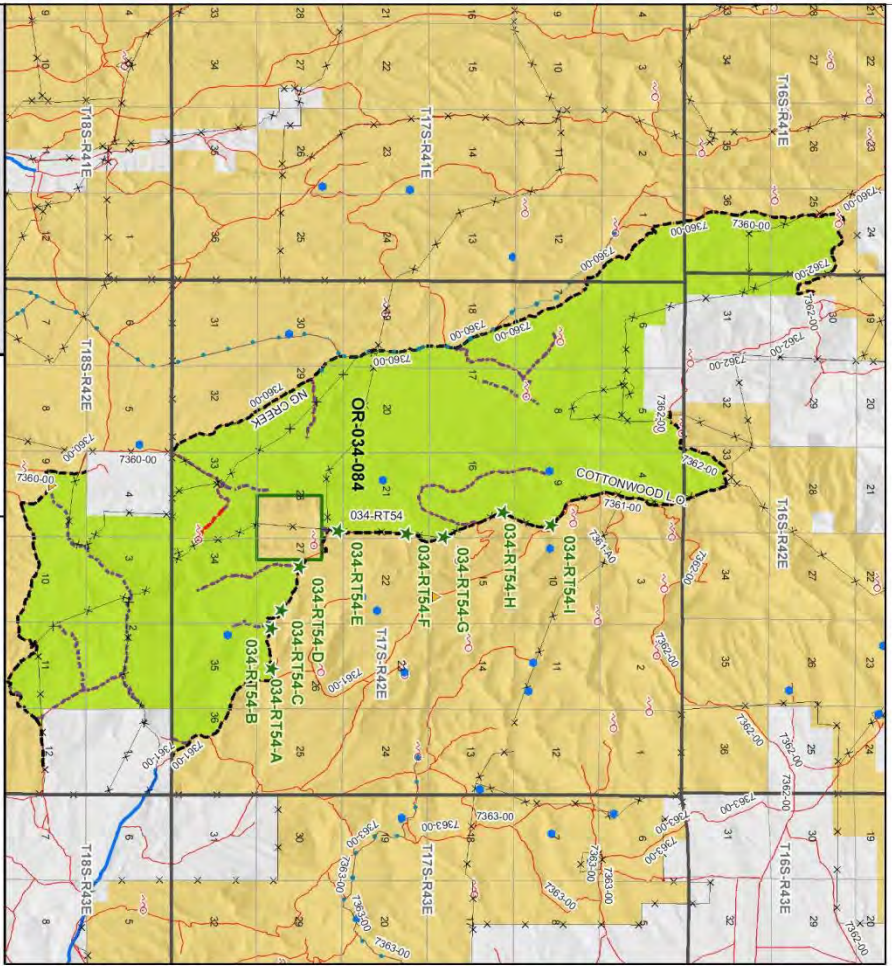
U.S. DEPARTMENT OF THE INTERIOR
BUREAU OF LAND MANAGEMENT
VALE DISTRICT
July 8, 2010
No warranty is made by the Bureau of Land Management for the use of the information contained herein for purposes not intended by the Bureau. The information is provided for informational purposes only. The user assumes all responsibility for the use of the information. The product is provided "as is" without warranty of any kind, either expressed or implied, including but not limited to the implied warranties of merchantability and fitness for a particular purpose.

**Wilderness Characteristics - Land Treatments
Cottonwood Creek - OR-034-084 - Map 2 of 2**

OBJECTID*	NAME	TREATMENT TYPE	SEED GROUP	DATE
1792	NG CREEK SEEDING	Brush/heat	Not Applicable	2003
1845	N.G. CREEK SEEDING	Plow/Disc	Not Applicable	1985
2338	NORTH NG BRUSHBEATING	Brush/heat	Not Applicable	2003/2002

Note: The Land Treatments represented by navy blue dots on the map to the left are labeled with the treatments. ObjectIDs listed in the first field of the Land Treatments table shown above. Multiple types of treatments may have been applied to the same area. For example, one treatment area may have been plowed and drill seeded - a record is shown in the table for each type of treatment.

Wilderness Characteristics - BLM Photo Points
Cottonwood Creek - OR-034-084



Legend

- Developed Spring
- Wildlife Quail
- Eastern Reservoir
- Pipeline
- Fence
- Historical Mineral Site
- Wetland (Shrub)
- Wetland (Sediment)
- BLM Wild Char Inventory Photo Point
- BLM Wild Char Inventory Photo Point

Route Types - H/M Determination

- Boundary Road
- Major Road
- Development Use
- Route - Outside Wild Char Unit
- Other
- BLM Numbered & Other Routes

Map Labels: T18S-R41E, T18S-R42E, T18S-R43E, T18S-R44E, T18S-R45E, T18S-R46E, T18S-R47E, T18S-R48E, T18S-R49E, T18S-R50E, T18S-R51E, T18S-R52E, T18S-R53E, T18S-R54E, T18S-R55E, T18S-R56E, T18S-R57E, T18S-R58E, T18S-R59E, T18S-R60E, T18S-R61E, T18S-R62E, T18S-R63E, T18S-R64E, T18S-R65E, T18S-R66E, T18S-R67E, T18S-R68E, T18S-R69E, T18S-R70E, T18S-R71E, T18S-R72E, T18S-R73E, T18S-R74E, T18S-R75E, T18S-R76E, T18S-R77E, T18S-R78E, T18S-R79E, T18S-R80E, T18S-R81E, T18S-R82E, T18S-R83E, T18S-R84E, T18S-R85E, T18S-R86E, T18S-R87E, T18S-R88E, T18S-R89E, T18S-R90E, T18S-R91E, T18S-R92E, T18S-R93E, T18S-R94E, T18S-R95E, T18S-R96E, T18S-R97E, T18S-R98E, T18S-R99E, T18S-R100E.

Scale: 0 0.5 1 2 Miles

U.S. DEPARTMENT OF THE INTERIOR
BUREAU OF LAND MANAGEMENT

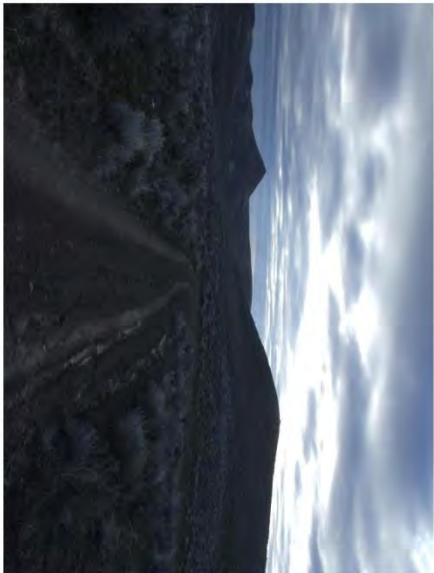
VALE DISTRICT
July 8, 2010

Map Notes: This map is a product of the Bureau of Land Management's mapping system. It is not a legal document. It is intended for informational purposes only. It is not to be used for any other purpose. It is not to be used for any other purpose. It is not to be used for any other purpose.

Wilderness Characteristics - BLM Photo Points
Cottonwood Creek - OR-034-084

PHOTO LOCATION*	DIRECTION	PHOTO TYPE	PHOTO DATE	COMMENTS
034-RT54-A	W	Route	20090331	Front
034-RT54-A	E	Route	20090331	Back
034-RT54-B	W	Route	20090331	Front
034-RT54-B	E	Route	20090331	Back
034-RT54-C	NW	Route	20090331	Front
034-RT54-C	SE	Route	20090331	Back
034-RT54-D	NW	Route	20090331	Front
034-RT54-D	SE	Route	20090331	Back
034-RT54-E	N	Route	20090331	Front
034-RT54-E	S	Route	20090331	Back
034-RT54-F	N	Route	20090331	Front
034-RT54-F	S	Route	20090331	Back
034-RT54-G	N	Route	20090331	Front
034-RT54-G	S	Route	20090331	Back
034-RT54-H	N	Route	20090331	Front
034-RT54-H	S	Route	20090331	Back
034-RT54-I	N	Route	20090331	Front
034-RT54-I	S	Route	20090331	Back

Note: The BLM Wild Char PhotoPoints displayed on the map are labeled with their Photo Locations. The BLM Photo Log table shown above lists the photos taken at their respective Photo Locations. Multiple photos may be taken at each Photo Location. Scenery and Project Photo Type pictures have their photo names provided in the Comments field.



034-RT54-A-E.JPG



034-RT54-B-W.JPG



034-RT54-D-NW.JPG

OR-034-084 Cottonwood Creek Page 1



034-RT54-A-W.JPG



034-RT54-C-NW.JPG



034-RT54-D-SE.JPG



034-RT54-B-E.JPG



034-RT54-C-SE.JPG



034-RT54-E-N.JPG



034-RT154-E-S.JPG



034-RT154-G-N.JPG



034-RT154-H-S.JPG



034-RT154-F-N.JPG



034-RT154-G-S.JPG



034-RT154-I-N.JPG



034-RT154-F-S.JPG



034-RT154-H-N.JPG



034-RT154-I-S.JPG