

Wilderness Inventory Unit Index of Documents
Clover Creek OR-034-079, 10 total pages

Page 1: Index Cover Sheet

[Page 2: Form 1 – Documentation of BLM Wilderness Inventory: Findings on Record](#)

[Page 5: Form 2 – Documentation of Current Wilderness Inventory Conditions](#)

[Page 8: Form 2 – Summary of Findings and Conclusion](#)

[Page 9: Wilderness Characteristics Overview – Clover Creek OR-034-079 Map 1 of 2](#)

[Page 10: Wilderness Characteristics-Land Treatments-Clover Creek OR-034-079 Map 2 of 2](#)

**Prepared by:
U.S. Department of the Interior
Bureau of Land Management
Vale District Office
100 Oregon Street
Vale, Oregon 97918**



H-6300-1-WILDERNESS INVENTORY MAINTENANCE IN BLM OREGON/WASHINGTON

APPENDIX B – INVENTORY AREA EVALUATION

Evaluation of Current Conditions:

- 1) Document and review the existing BLM wilderness inventory findings on file, if available, regarding the presence or absence of individual wilderness characteristics, using Form 1, below.
- 2) Consider relevant information regarding current conditions available in the office to identify and describe any changes to the existing information (use interdisciplinary (ID) team knowledge, aerial photographs, field observations, maps, etc.), and document your findings on Form 2, below.

When Citizen Information has been submitted regarding wilderness characteristics, document the submitted materials including: date of Submission; Name of District(s) and Field Office(s) Affected; Type of material Submitted (e.g. narrative, map, photo). Evaluate any submitted citizen information regarding the validity of proposed boundaries of the unit(s), the existence of roads and other boundary features, the size of the unit(s), and the presence or absence of wilderness characteristics based on relevant information available in the office (prior BLM inventories, ID team knowledge, aerial photographs, field observations, maps, etc.)

Conduct field reviews as necessary to verify information and to ascertain current conditions. Reach conclusions on current conditions including boundaries, size of areas and presence or absence of wilderness characteristics. Fully explain the basis for each conclusion on form 2, including any critical differences between BLM and citizen information.

Document your findings regarding current conditions for each inventoried area. Describe how the present conditions are similar to, or have changed from, the conditions documented in the original wilderness inventory. Document your findings on Form 2 for each inventory area. Cite to or attach data considered, including photographs, maps, GIS layers, field trip notes, project files, *etc.*

Year: 2010 **Unit Number/Name:** OR-034-079 -- Clover Creek

**FORM 1 -- DOCUMENTATION OF BLM WILDERNESS INVENTORY
FINDINGS ON RECORD**

1. Is there existing BLM wilderness inventory information on all or part of this area?

Yes No (If yes, and if more than one unit is within the area, list the names of those units.):

A.) Inventory Source(s) -- (X) Denotes all applicable BLM Inventory files, printed maps, or published BLM Decision documents with information pertaining to this unit.

Wilderness Inventories

- (X) 1978 – 1979 -- BLM Wilderness Inventory Units 3-25 of OR-03-02-44 Clover Creek (unpublished BLM documents in case files)
- (X) April 1979 – *Wilderness -- Proposed Initial Inventory – Roadless Areas and Islands Which Clearly Do Not have Wilderness Characteristics, Oregon and Washington*

Wilderness Decision Documents

- (X) August 1979 – *Wilderness Review – Initial Inventory, Final Decision on Public Lands Obviously Lacking Wilderness Characteristics and Announcement of Public Lands to be Intensively Inventoried for Wilderness Characteristics, Oregon and Washington* (green document)
- () October 1979 – *Wilderness Review – Intensive Inventory - Oregon, Proposed Decision on the Intensive Wilderness Inventory of Selected Areas* (grey document).
- () March 1980 – *Wilderness Review – Intensive Inventory; Final Decisions on 30 Selected Units in Southeast Oregon and Proposed Decisions on Other Intensively Inventoried Units in Oregon and Washington* (orange document)
- () November 1980 - *Wilderness Inventory – Oregon and Washington, Final Intensive Inventory Decisions* (brown document)
- () November 1981 *Stateline Intensive Wilderness Inventory Final Decision, Oregon, Idaho, Nevada, Utah* (tan document).

B.) Inventory Unit Name(s)/Number(s)

BLM 3-25 of OR-03-02-44 Clover Creek

C.) Map Name(s)/Number(s)

- Final Decision – Initial Wilderness Inventory Map, August 1979, Oregon
- Proposed Decision -- Intensive Wilderness Inventory of Selected Areas Map, October 1979, Oregon
- Intensive Wilderness Inventory Map, March 1980, Oregon
- Intensive Wilderness Inventory --Final Decisions Map, November 1980, Oregon.
- November, 1981 *Stateline Intensive Wilderness Inventory Final Decision, Oregon, Idaho, Nevada, Utah* (tan document).

D.) BLM District(s)/Field Office(s)

Vale District Office/ Malheur Field Office

2. BLM Inventory Findings on Record

(Existing inventory information regarding wilderness characteristics (if more than one BLM inventory unit is associated with the area, list each unit and answer each question individually for each inventory unit):

Inventory Source: See above.

Unit#/ Name	Size (historic acres)	Natural Condition? Y/N	Outstanding Solitude? Y/N	Outstanding Primitive & Unconfined Recreation? Y/N	Supplemental Values? Y/N
3-25 of OR-03-02-44 Clover Creek	8,320	*	N	N	*
TOTAL	8,320				

*-- These criteria were not specifically clarified with the inventory of this unit.

H-6300-1-WILDERNESS INVENTORY MAINTENANCE IN BLM OREGON/WASHINGTON

APPENDIX B – INVENTORY AREA EVALUATION

Evaluation of Current Conditions:

- 1) Document and review the existing BLM wilderness inventory findings on file, if available, regarding the presence or absence of individual wilderness characteristics, using Form 1, below.
- 2) Consider relevant information regarding current conditions available in the office to identify and describe any changes to the existing information (use interdisciplinary (ID) team knowledge, aerial photographs, field observations, maps, etc.), and document your findings on Form 2, below.

When Citizen Information has been submitted regarding wilderness characteristics, document the submitted materials including: date of Submission; Name of District(s) and Field Office(s) Affected; Type of material Submitted (e.g. narrative, map, photo). Evaluate any submitted citizen information regarding the validity of proposed boundaries of the unit(s), the existence of roads and other boundary features, the size of the unit(s), and the presence or absence of wilderness characteristics based on relevant information available in the office (prior BLM inventories, ID team knowledge, aerial photographs, field observations, maps, etc.)

Conduct field reviews as necessary to verify information and to ascertain current conditions. Reach conclusions on current conditions including boundaries, size of areas and presence or absence of wilderness characteristics. Fully explain the basis for each conclusion on form 2, including any critical differences between BLM and citizen information.

Document your findings regarding current conditions for each inventoried area. Describe how the present conditions are similar to, or have changed from, the conditions documented in the original wilderness inventory. Document your findings on Form 2 for each inventory area. Cite to or attach data considered, including photographs, maps, GIS layers, field trip notes, project files, *etc.*

FORM 2 -- DOCUMENTATION OF CURRENT WILDERNESS INVENTORY CONDITIONS

Unit Number/Name: OR-034-079 -- Clover Creek

Description of Current Conditions: [Include land ownership, location, topography, vegetation features and summary of major human uses/activities.]

1. Is the unit of sufficient size?

Yes X No

Description: Refer to this inventory unit's associated Map 1 for its location. The unit has 11,855 acres of public land. The unit is larger than BLM's late 1970's inventory unit of this area. The primary difference in acreage is that an apparent rimrock feature was part of the unit's boundary in the late 1970's; for this inventory maintenance the boundary is adjusted to a valid boundary feature, that being County road 551. More accurate means of determining acreage since the late 1970's is also a factor for adjustment with this OR034-079 inventory unit.

The unit's boundaries are County road 551, another road traversing public lands, and private land parcels on its southwest side; BLM road 7360-0-100, another road traversing public lands, and private land on the unit's northeast side; and private land parcels on both its north and south sides. A 320 acre inholding is also a boundary feature of the unit. The boundary roads are mechanically maintained as needed to provide for relatively regular and continuous use.

2. Is the unit in a natural condition?

Yes X No N/A

Description: The unit consists predominately of the radiating short side drainages and associated moderate to steep slopes of Clover Creek, which centrally goes through the length of the unit. Elevations range from 3,1690 to 4,600 feet. Vegetation consists predominately of sagebrush, rangeland grasses, and some widely scattered juniper in the unit's north.

Refer to this inventory unit's associated Map 1 and Map 2 for human imprints. There are 14.5 miles of rangeland fences, 2 earthen reservoirs and 15.9 miles of 14 motorized primitive trails (MPTs). Five of the MPTs dissect the unit's narrow width and are distributed along much of the unit's length. There remains no visual contrast of two disc-brush control/drilled grass seedings which occurred in 1965 and 1969. Remnant visual contrast of linear appearing disc-plowed rows are distinguishable from 2005 buck brush seedings which – within this unit, about 1,000 acres -- are located along the southernmost boundary of the unit. The general nature of developments and their distribution

results in the unit, overall, appearing to be affected primarily by the forces of nature with the imprint of humans substantially unnoticeable to the average visitor.

3. Does the unit have outstanding opportunities for solitude?

Yes _____ No X N/A _____

Description: The unit's highly irregular and narrow shape, absence of vegetation screening, location of the inholding which nearly splits the length of the unit into two separate sectors, and insufficient topographic screening within settings within the narrow confines of the unit's width precludes the unit from having outstanding opportunities for solitude.

4. Does the unit have outstanding opportunities for primitive and unconfined recreation?

Yes _____ No X N/A _____

Description: Hunting for common game species (primarily deer and some chukar) occurs in the unit. Other opportunities include hiking and general sightseeing. There are no special or unique features or activities that more so attracts visitors to the inventory unit. Individually or in combinations the unit does not possess outstanding opportunities for primitive and unconfined recreation.

5. Does the unit have supplemental values?

Yes X No _____ N/A _____

Description: Two leks of sage grouse – a BLM special status animal species – have been documented within the unit.

Summary of Findings and Conclusion

Unit Name and Number: OR-034-079 — Clover Creek

Summary Results of Analysis:

- 1. Does the area meet any of the size requirements? Yes No
- 2. Does the area appear to be natural? Yes No
- 3. Does the area offer outstanding opportunities for solitude or a primitive and unconfined type of recreation? Yes No NA
- 4. Does the area have supplemental values? Yes No NA

Conclusion -- check one:

- The area, or a portion of the area, has wilderness character.
- The area does not have wilderness character.

Prepared by: Robert Alward
Robert Alward, Wilderness Planner, contractor

Team Members:

<u>Bill Lutjens</u>	12/7/10
Bill Lutjens, Rangeland Management Specialist	Date
<u>Dan Thomas</u>	12/6/10
Dan Thomas, Range Technician	Date
<u>Lynn Silva</u>	11-16-2010
Lynn Silva, Weed Coordinator	Date
<u>Gillian Wigglesworth</u>	12/6/10
Gillian Wigglesworth, Botanist	Date
<u>Michelle Caviness</u>	12/6/10
Michelle Caviness, Wildlife Biologist	Date
<u>Eian Ray</u>	12-6-10
Eian Ray, GIS Specialist, contractor	Date
<u>Brent Grasty</u>	12/5/10
Brent Grasty, GIS Coordinator	Date

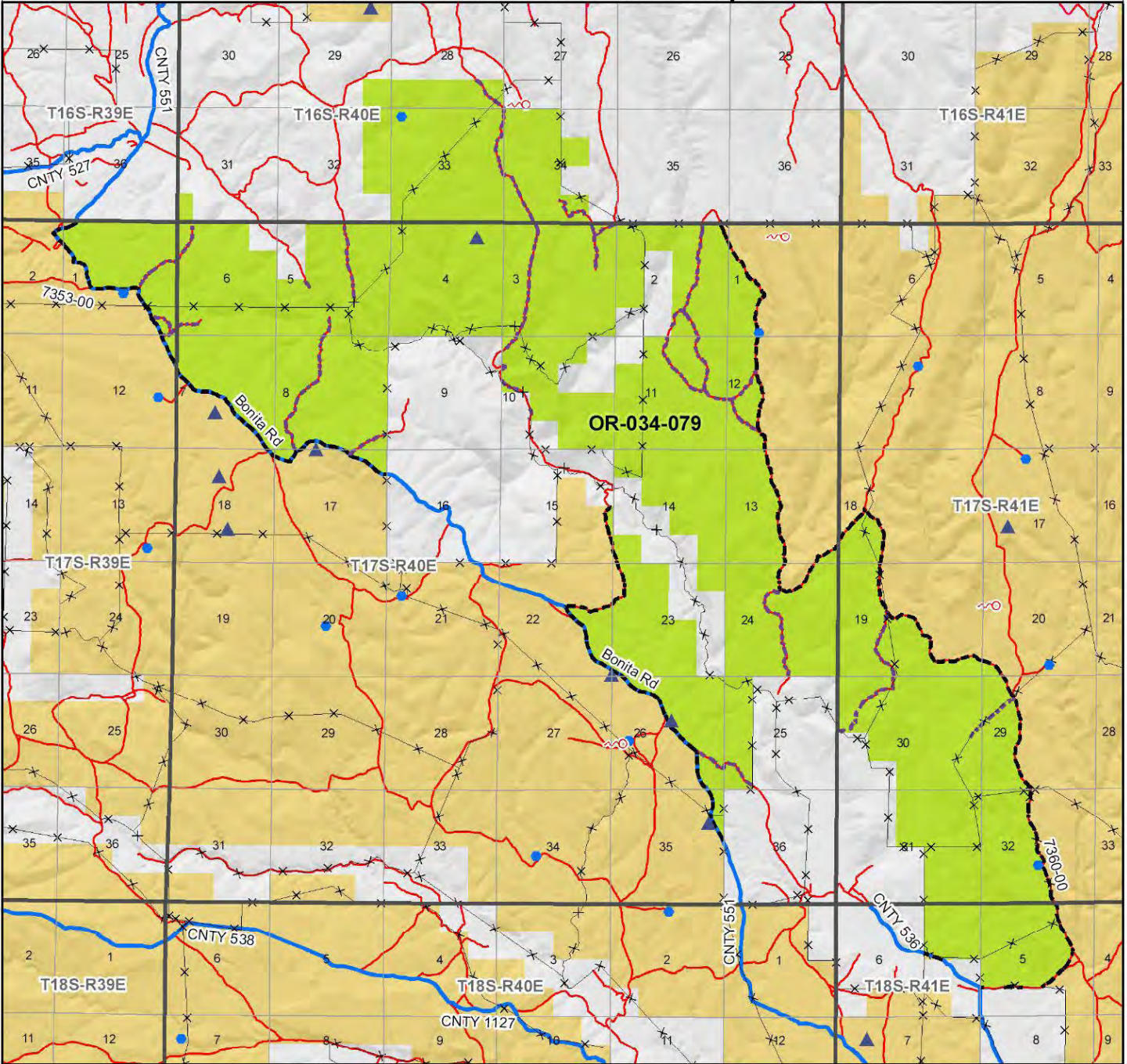
Approved by: Pat Ryan
Pat Ryan, Malheur Resource Area Field Manager

12/13/10
Date

This form documents information that constitutes an inventory finding on wilderness characteristics. It does not represent a formal land use allocation or a final agency decision subject to administrative remedies under either 43 CFR parts 4 or 1610.5-2.

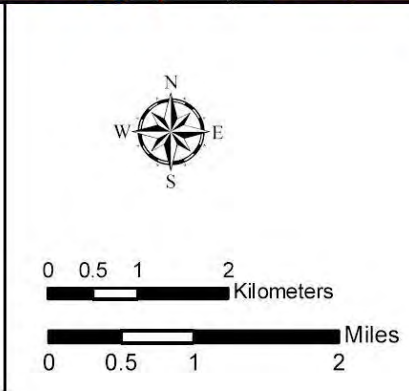
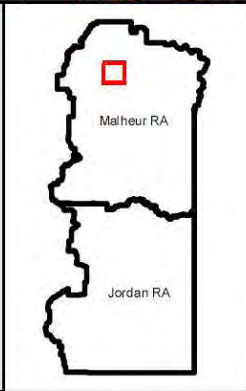
Wilderness Characteristics - Overview

Clover Creek - OR-034-079 - Map 1 of 2



Legend

Developed Spring	Boundary Road
Wildlife Guzzler	Motorized Primitive Trail (MPT)
Earthen Reservoir	Discontinued Use
Pipeline	Routes - Outside Wild Char Unit
Trough	County
Fence	Major Highway
Storage Tank	BLM Numbered & Other Routes
Surface Mining Disturbance	Land Ownership
Sage Grouse Lek	Bureau of Land Management
Special Status Plant	State
BLM Wild Char Inventory Unit	Private
Wilderness Study Area	Other Federal Land
Mineral Material Site	
Road/Utility Right-of-Way	
Major Water Body	



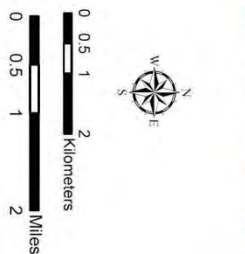
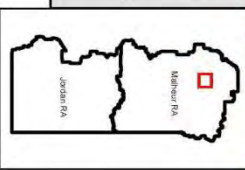
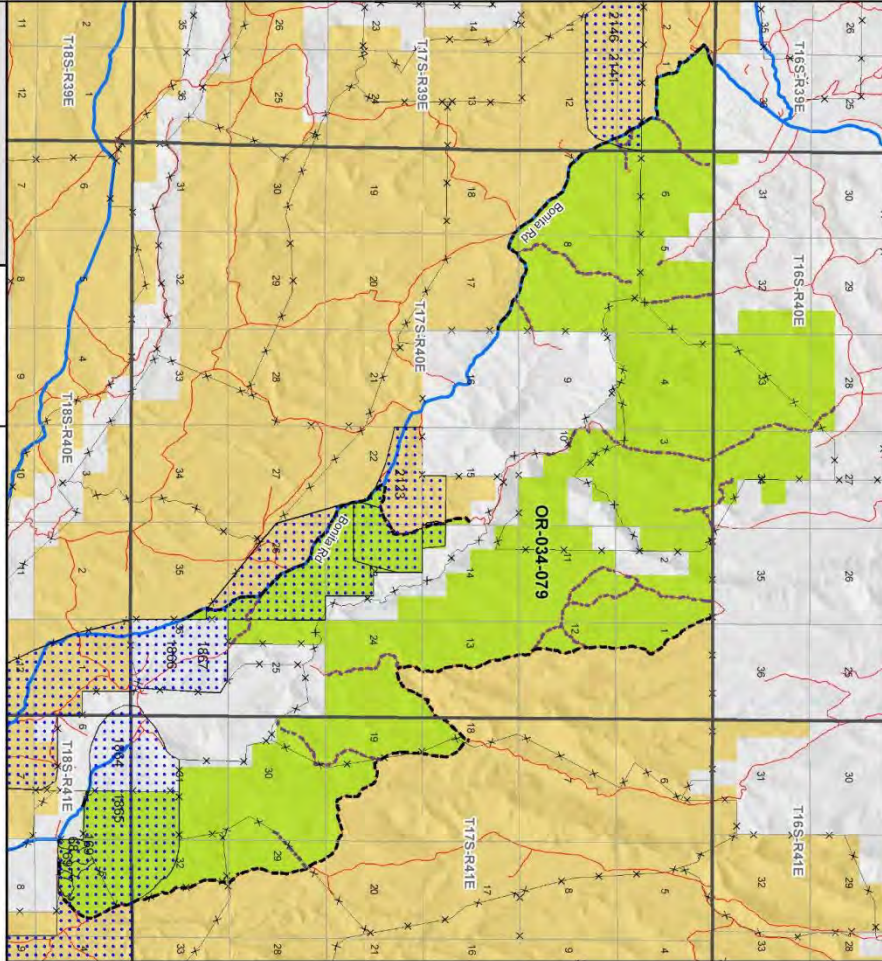
U.S. DEPARTMENT OF THE INTERIOR
BUREAU OF LAND MANAGEMENT

VALE DISTRICT
July 8, 2010

No warranty is made by the Bureau of Land Management as to the accuracy, reliability or completeness of these data for individual or aggregate use with other data. Original data were compiled from various sources. This information may not meet National Map Accuracy Standards. This product was developed through digital means and may be updated without notification.

--FINAL--

Wilderness Characteristics - Land Treatments
Clover Creek - OR-034-079 - Map 2 of 2



U.S. DEPARTMENT OF THE INTERIOR
 BUREAU OF LAND MANAGEMENT
 VALE DISTRICT
 July 8, 2010
 No warranty is made by the Bureau of Land Management for the use of the information contained in this report for purposes not intended by the Bureau. The BLM, USFS, and other agencies may have different interpretations of the information contained in this report. The BLM, USFS, and other agencies may have different interpretations of the information contained in this report. The BLM, USFS, and other agencies may have different interpretations of the information contained in this report.

Wilderness Characteristics - Land Treatments
Clover Creek - OR-034-079 - Map 2 of 2

OBJECTID*	NAME	TREATMENT TYPE	SEED GROUP	DATE
68	BUCKBRUSH SEEDING	Brusheat	Not Applicable	2005/04/30
69	BUCKBRUSH SEEDING	Brusheat	Not Applicable	2005/04/30
77	BUCKBRUSH SEEDING	Drill Seeding	Native Grasses	2005/10
169	BUCKBRUSH SEEDING	Drill Seeding	Native Grasses	2005/10
1664	BUCKBRUSH SEEDING	Plow/Disc	Not Applicable	1989
1866	BUCKBRUSH SEEDING	Drill Seeding	Unknown	1989
1867	LOWER CLOVER CREEK SEEDING	Plow/Disc	Not Applicable	1985
2123	SOUTH RIDGE BRUSH CONTROL	Drill Seeding	Unknown	1983
2141	NORTH RIDGE BRUSH CONTROL	Chemical Treatment	Not Applicable	1983
2146	NORTH RIDGE BRUSH CONTROL	Drill Seeding	Non-native Grasses	1983

Note: The Land Treatments represented by navy blue dots on the map to the left are labeled with the treatments' ObjectIDs listed in the first field of the Land Treatments table shown above. Multiple types of treatments may have been applied to the same area. For example, one treatment area may have been plowed and drill seeded - a record is shown in the table for each type of treatment.