

Wilderness Inventory Unit Index of Documents
Clark Ranch OR-034-060, 18 total pages

Page 1: Index Cover Sheet

[Page 2: Form 1 – Documentation of BLM Wilderness Inventory: Findings on Record](#)

[Page 5: Form 2 – Documentation of Current Wilderness Inventory Conditions](#)

[Page 9: Form 2 – Summary of Findings and Conclusion](#)

[Page 10: Wilderness Characteristics Overview – Clark Ranch OR-034-060 Map 1 of 1](#)

[Page 11: Wilderness Characteristics – BLM Photo Points – Clark Ranch Map & Log](#)

[Page 12: OR-034-060 Clark Ranch BLM Photos](#)

[Page 15: H-6300-1-Wilderness Inventory Maintenance in BLM Oregon/Washington
Appendix C – Road* Analysis: 034-RT87](#)

Prepared by:
U.S. Department of the Interior
Bureau of Land Management
Vale District Office
100 Oregon Street
Vale, Oregon 97918



H-6300-1-WILDERNESS INVENTORY MAINTENANCE IN BLM OREGON/WASHINGTON

APPENDIX B – INVENTORY AREA EVALUATION

Evaluation of Current Conditions:

- 1) Document and review the existing BLM wilderness inventory findings on file, if available, regarding the presence or absence of individual wilderness characteristics, using Form 1, below.
- 2) Consider relevant information regarding current conditions available in the office to identify and describe any changes to the existing information (use interdisciplinary (ID) team knowledge, aerial photographs, field observations, maps, etc.), and document your findings on Form 2, below.

When Citizen Information has been submitted regarding wilderness characteristics, document the submitted materials including: date of Submission; Name of District(s) and Field Office(s) Affected; Type of material Submitted (e.g. narrative, map, photo). Evaluate any submitted citizen information regarding the validity of proposed boundaries of the unit(s), the existence of roads and other boundary features, the size of the unit(s), and the presence or absence of wilderness characteristics based on relevant information available in the office (prior BLM inventories, ID team knowledge, aerial photographs, field observations, maps, etc.)

Conduct field reviews as necessary to verify information and to ascertain current conditions. Reach conclusions on current conditions including boundaries, size of areas and presence or absence of wilderness characteristics. Fully explain the basis for each conclusion on form 2, including any critical differences between BLM and citizen information.

Document your findings regarding current conditions for each inventoried area. Describe how the present conditions are similar to, or have changed from, the conditions documented in the original wilderness inventory. Document your findings on Form 2 for each inventory area. Cite to or attach data considered, including photographs, maps, GIS layers, field trip notes, project files, *etc.*

Year: 2009 Unit Number/Name: OR-034-060 — Clark Ranch

**FORM 1 -- DOCUMENTATION OF BLM WILDERNESS INVENTORY
FINDINGS ON RECORD**

1. Is there existing BLM wilderness inventory information on all or part of this area?

Yes X No _____ (If yes, and if more than one unit is within the area, list the names of those units.):

A.) Inventory Source(s) -- (X) Denotes all applicable BLM Inventory files, printed maps, or published BLM Decision documents with information pertaining to this unit.

Wilderness Inventories

- () 1978-1979 – BLM Wilderness Inventory Clark Ranch 3-45 of OR-03-03-22 (unpublished BLM documents in case files)
- (X) April 1979 – *Wilderness -- Proposed Initial Inventory – Roadless Areas and Islands Which Clearly Do Not have Wilderness Characteristics, Oregon and Washington*

Wilderness Decision Documents

- (X) August 1979 – *Wilderness Review – Initial Inventory, Final Decision on Public Lands Obviously Lacking Wilderness Characteristics and Announcement of Public Lands to be Intensively Inventoried for Wilderness Characteristics, Oregon and Washington* (green document)
- () October 1979 – *Wilderness Review – Intensive Inventory - Oregon, Proposed Decision on the Intensive Wilderness Inventory of Selected Areas* (grey document)
- () March 1980 – *Wilderness Review – Intensive Inventory; Final Decisions on 30 Selected Units in Southeast Oregon and Proposed Decisions on Other Intensively Inventoried Units in Oregon and Washington* (orange document)
- () November 1980 - *Wilderness Inventory – Oregon and Washington, Final Intensive Inventory Decisions* (brown document)
- () November 1981 *Stateline Intensive Wilderness Inventory Final Decision, Oregon, Idaho, Nevada, Utah* (tan document)

B.) Inventory Unit Name(s)/Number(s)

BLM 3-45 Clark Ranch of OR-03-03-22

C.) Map Name(s)/Number(s)

- (X) Final Decision – Initial Wilderness Inventory Map, August 1979, Oregon
- () Proposed Decision -- Intensive Wilderness Inventory of Selected Areas Map, October 1979, Oregon
- () Intensive Wilderness Inventory Map, March 1980, Oregon
- () Intensive Wilderness Inventory --Final Decisions Map, November 1980, Oregon
- () November, 1981 *Stateline Intensive Wilderness Inventory Final Decision, Oregon, Idaho, Nevada, Utah* (tan document)

D.) BLM District(s)/Field Office(s)

Vale District/Malheur Resource Area

2. BLM Inventory Findings on Record

(Existing inventory information regarding wilderness characteristics (if more than one BLM inventory unit is associated with the area, list each unit and answer each question individually for each inventory unit):

Inventory Source: See above.

Unit#/ Name	Size (historic acres)	Natural Condition? Y/N	Outstanding Solitude? Y/N	Outstanding Primitive & Unconfined Recreation? Y/N	Supplemental Values? Y/N
Clark Ranch 3-45 of OR-03-03-22	17,400	*	N	N	*
TOTAL	17,400				

* -- Upon present review of the written record for these criteria, there is not an understanding of what the determination was for this particular wilderness characteristic of this unit.

H-6300-1-WILDERNESS INVENTORY MAINTENANCE IN BLM OREGON/WASHINGTON

APPENDIX B – INVENTORY AREA EVALUATION

Evaluation of Current Conditions:

- 1) Document and review the existing BLM wilderness inventory findings on file, if available, regarding the presence or absence of individual wilderness characteristics, using Form 1, below.
- 2) Consider relevant information regarding current conditions available in the office to identify and describe any changes to the existing information (use interdisciplinary (ID) team knowledge, aerial photographs, field observations, maps, etc.), and document your findings on Form 2, below.

When Citizen Information has been submitted regarding wilderness characteristics, document the submitted materials including: date of Submission; Name of District(s) and Field Office(s) Affected; Type of material Submitted (e.g. narrative, map, photo). Evaluate any submitted citizen information regarding the validity of proposed boundaries of the unit(s), the existence of roads and other boundary features, the size of the unit(s), and the presence or absence of wilderness characteristics based on relevant information available in the office (prior BLM inventories, ID team knowledge, aerial photographs, field observations, maps, etc.)

Conduct field reviews as necessary to verify information and to ascertain current conditions. Reach conclusions on current conditions including boundaries, size of areas and presence or absence of wilderness characteristics. Fully explain the basis for each conclusion on form 2, including any critical differences between BLM and citizen information.

Document your findings regarding current conditions for each inventoried area. Describe how the present conditions are similar to, or have changed from, the conditions documented in the original wilderness inventory. Document your findings on Form 2 for each inventory area. Cite to or attach data considered, including photographs, maps, GIS layers, field trip notes, project files, *etc.*

FORM 2 -- DOCUMENTATION OF CURRENT WILDERNESS INVENTORY CONDITIONS

Unit Number/Name: OR-034-060 — Clark Ranch

NOTE: In February, 2004, the Vale District received from Oregon Natural Desert Association (ONDA) its evaluation of wilderness characteristics for what ONDA names its 17,689 acre “Sacramento Butte proposed WSA Addition”. For reference, a hard copy of ONDA’s proposal is retained in this unit’s file. Information provided by ONDA’s proposal was considered and incorporated as appropriate for this BLM Wilderness Characteristics Inventory maintenance. Unit OR-034-060 represents the same area and boundaries as for ONDA’s proposal.

Description of Current Conditions: [Include land ownership, location, topography, vegetation features and summary of major human uses/activities.]

1. Is the unit of sufficient size?

Yes X No

Description: Refer to the associated Map 1 of this unit’s location. The unit has 17,670 acres of public land. The unit’s boundaries are the same as the late 1970’s wilderness characteristics inventory. The difference in stated acreage from the late 1970’s BLM inventory is due to the application of improved methods to more so accurately calculate surface area since that time. Present boundaries include a road across public lands and private lands on its west side, county road 3627 (alias 034-RT86) and private land on its north side. On the unit’s east side, a route across public land (034-RT87) has changed status from a road to a motorized primitive trail (MPT) since BLM’s late 1970’s wilderness characteristics inventory. At the time the route as a road served as a west boundary feature of the Lower Owyhee Canyon WSA. The route type change has occurred because BLM knows of no mechanical maintenance performed on the route since the late 1970’s and BLM has no need for such maintenance to be performed on it into the future. Thus, this route, now a MPT, results in unit OR-034-060 being contiguous with the WSA. Boundary roads of the unit are mechanically maintained as needed to provide for relatively regular and seasonally continuous travel.

2. Is the unit in a natural condition?

Yes X No N/A

Description: Within the inventory unit, vegetation is predominately nonnative cheat grass, some native grasses and sagebrush. Terrain consists predominately of flat to slightly rolling hills of very low profile -- about 200 feet in elevation change. Overall, though, within the unit as a whole the elevation ranges from 4,060 to 4,438 feet (Sacramento Butte).

Refer to the unit’s associated Map 1 for human developments. There are 17.2 miles of 9 MPTs (including 8 miles along the common boundary with Lower Owyhee Canyon WSA), 8.1 miles of rangeland fences, and 7 earthen reservoirs. There also is remnant

visual evidence of a 0.8 mile abandoned route. The wide distribution and types of developments results in the unit – as well as the unit combined with the contiguous WSA -- appearing to be affected primarily by the forces of nature with the imprint of humans being substantially unnoticeable to the average visitor.

3. Does the unit have outstanding opportunities for solitude?

Yes X No N/A

Description: The unit is between less than a mile to up to 5 miles in width, and with a range of 4.5 to 9 miles in length. With these dimensions, within certain sectors of the unit, itself, a visitor is able to experience a sense of being isolated. However, overall, due to the absence of vegetative screening combined with the substantially low topographic profile and lack of diversity in relief within the unit, the sense of feeling isolated is not outstanding. This was the same finding as for the late 1970's inventory. However, this circumstance is changed with the unit's now contiguous setting with the WSA. The unit in combination with the WSA takes on a substantially increased size of landscape area which, being further enhanced by the existing deeply incised canyons of the WSA continues, overall, to provide for outstanding opportunities for solitude.

For reasons stated above, BLM does not concur with ONDA, which states “despite the fact that the vegetation consists mostly of low sage and the relief is gently rolling hills, outstanding opportunities for solitude.... abound in Sacramento Butte proposed WSA Addition by itself”.

4. Does the unit have outstanding opportunities for primitive and unconfined recreation?

Yes X No N/A

Description: The unit, itself, provides for hunting of common game species, primarily deer and chukar, and some antelope. These hunting opportunities are not deemed outstanding opportunities for primitive and unconfined recreation. The unit possesses no special or unique features or recreational opportunities to specifically draw visitors to it. However, being contiguous with the WSA, this unit is now an inherent continuum of certain land and water-based outstanding opportunities for primitive and unconfined recreation associated with the WSA, but which are and remain primarily associated with the WSA's deep river canyon with its outstanding non-motorized whitewater boating, hiking, and both scenic and geologic sightseeing and photography opportunities.

For reasons stated above, BLM does not concur with ONDA, which states “despite the fact that the vegetation consists mostly of low sage and the relief is gently rolling hills, outstanding opportunities for...primitive recreation abound in Sacramento Butte proposed WSA Addition by itself”.

5. Does the unit have supplemental values?Yes X No N/A

Description: Current BLM records indicate one Sage grouse lek is located within the unit; the bird is a BLM special status animal species.

ONDA states that its proposed Sacramento Butte WSA Addition “may also be home to Mojave Black-collared Lizard, Desert Horned Lizard, Ground Snake, Ferruginous Hawk, Pygmy Rabbit, and White-tailed Antelope Squirrel,” which ONDA’s February 2004 submission to the Vale District declares are listed as “sensitive species” by the State of Oregon. As of 2009, the Mohave Black-collard Lizard, Desert Horned Lizard, Ground Snake and the White-tailed Antelope Squirrel were not considered sensitive by Oregon Department of Fish and Wildlife, BLM, or U.S. Fish and Wildlife Service. BLM acknowledges that habitat requirements may exist for the Mojave Black-collared Lizard, Desert Horned Lizard, Ground Snake, Ferruginous Hawk, Pygmy Rabbit, and White-tailed Antelope Squirrel; however, neither ONDA nor any other entity has provided BLM official documentation confirming the presence of these species within this inventory unit.

Summary of Findings and Conclusion

Unit Name and Number: OR-034-060 -- Clark Ranch

Summary Results of Analysis:

- 1. Does the area meet any of the size requirements? X Yes No
- 2. Does the area appear to be natural? X Yes No
- 3. Does the area offer outstanding opportunities for solitude or a primitive and unconfined type of recreation? X Yes No NA
- 4. Does the area have supplemental values? X Yes No NA

Conclusion -- check one:

- X The area, or a portion of the area, has wilderness character.
- The area does not have wilderness character.

Prepared by: Robert Alward
Robert Alward, Wilderness Planner contractor

Team Members:

<u>Steve Christensen</u>	<u>2-25-2010</u>
Steve Christensen, Rangeland Management Specialist	Date
<u>Gillian Wigglesworth</u>	<u>2/5/10</u>
Gillian Wigglesworth, Botanist	Date
<u>Shaney Rockefeller</u>	<u>3/10/10</u>
Shaney Rockefeller, Soil Scientist	Date
<u>Michelle Caviness</u>	<u>2/25/10</u>
Michelle Caviness, Wildlife Biologist	Date
<u>Eian Ray</u>	<u>02/09/10</u>
Eian Ray, GIS Specialist, contractor	Date
<u>Brent Grasty</u>	<u>2/9/10</u>
Brent Grasty, GIS Coordinator	Date

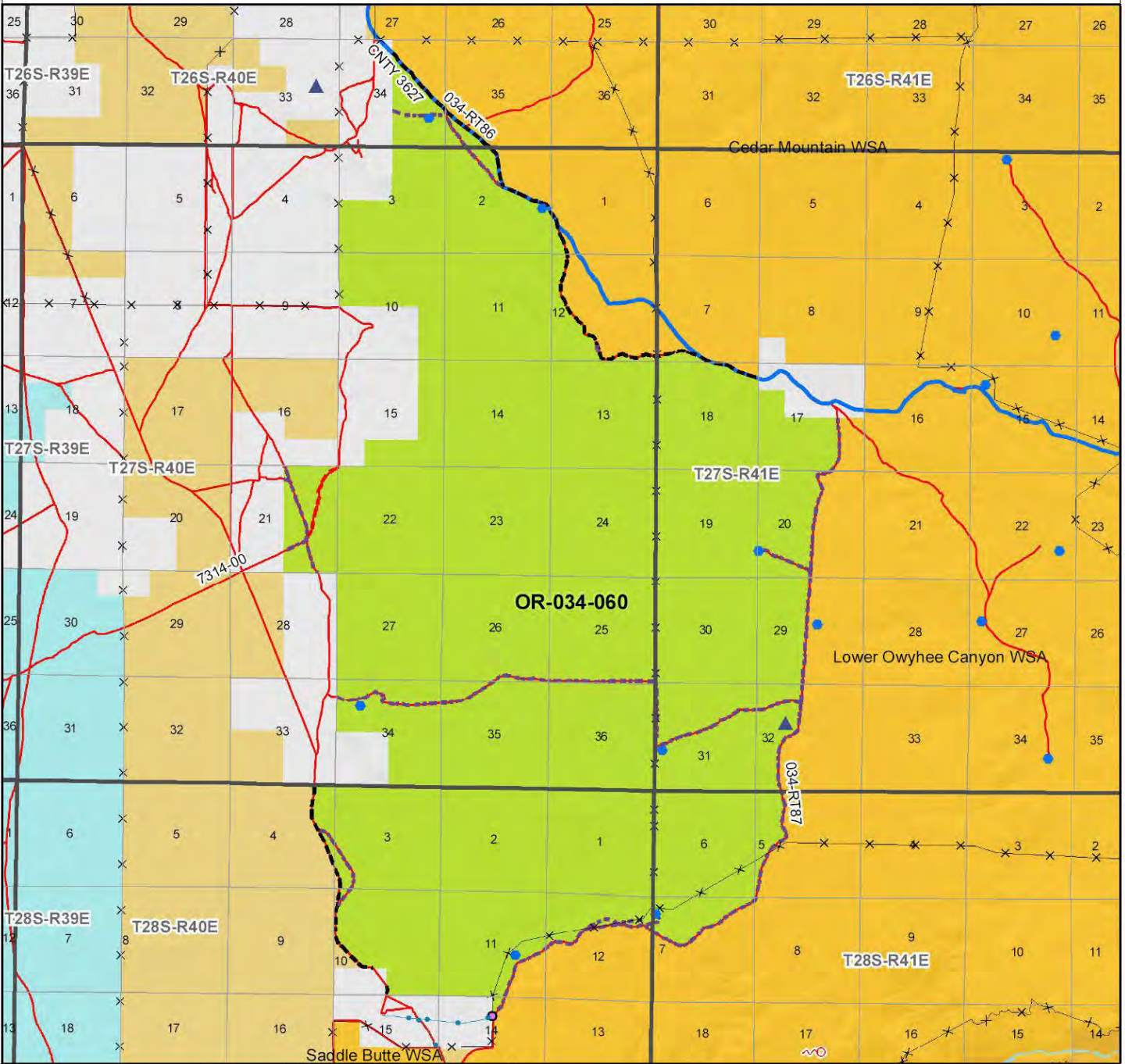
Approved by:

Pat Ryan 7/11/10
Pat Ryan, Malheur Resource Area Field Manager Date

This form documents information that constitutes an inventory finding on wilderness characteristics. It does not represent a formal land use allocation or a final agency decision subject to administrative remedies under either 43 CFR parts 4 or 1610.5-2.

Wilderness Characteristics - Overview

Clark Ranch - OR-034-060 - Map 1 of 1



Legend

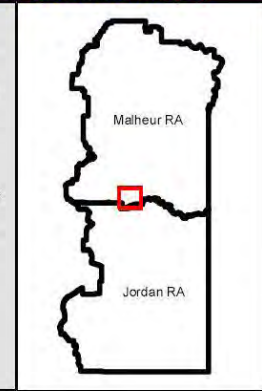
- Developed Spring
- ▲ Wildlife Guzzler
- Earthen Reservoir
- Pipeline
- Trough
- x Fence
- ◆ Storage Tank
- x Surface Mining Disturbance
- ▲ Sage Grouse Lek
- Special Status Plant
- BLM Wild Char Inventory Unit
- Wilderness Study Area
- Mineral Material Site
- Road/Utility Right-of-Way
- Major Water Body

Route Types - BLM Determination

- Boundary Road
- Motorized Primitive Trail (MPT)
- Discontinued Use
- Routes - Outside Wild Char Unit
- County
- Major Highway
- BLM Numbered & Other Routes

Land Ownership

- Bureau of Land Management
- State
- Private
- Other Federal Land



0 0.45 0.9 1.8
Kilometers

0 0.45 0.9 1.8
Miles

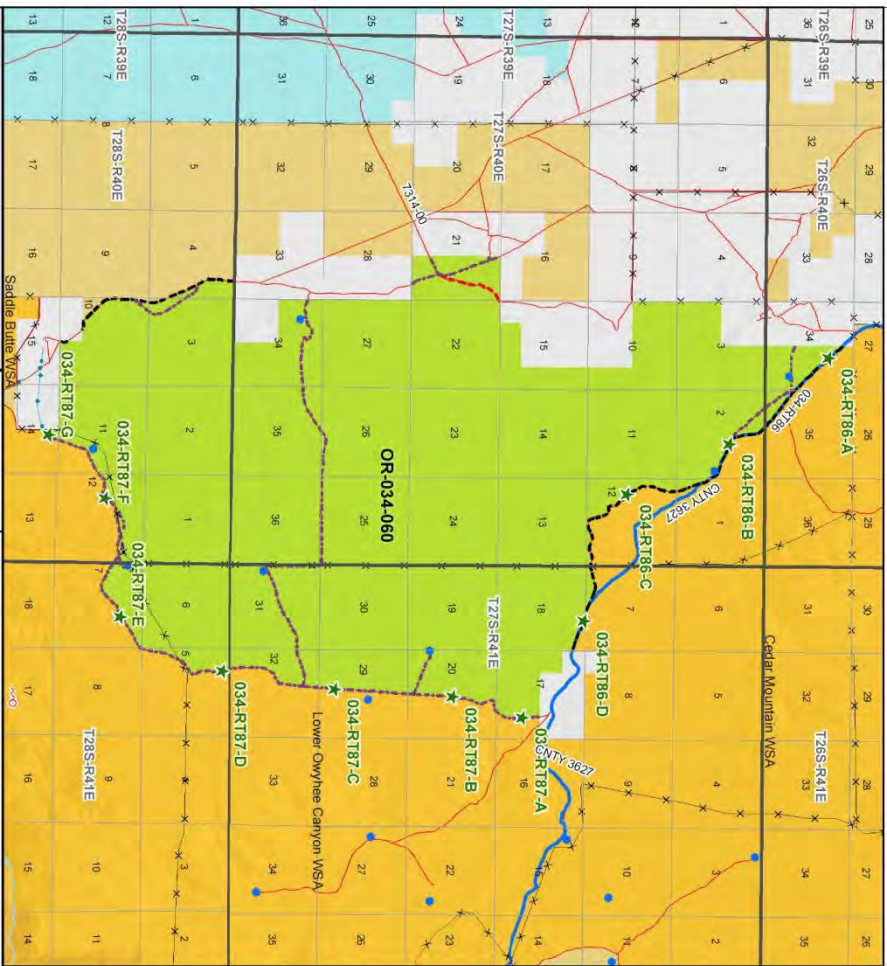
U.S. DEPARTMENT OF THE INTERIOR
 BUREAU OF LAND MANAGEMENT

VALE DISTRICT
 December 16, 2009

No warranty is made by the Bureau of Land Management as to the accuracy, reliability, or completeness of these data for individual or aggregate use with other data. Original data were compiled from various sources. This information may not meet National Map Accuracy Standards. The product was developed through digital means and may be updated without notification.

--FINAL--

**Wilderness Characteristics - BLM Photo Points
Clark Ranch - OR-034-060**



**Wilderness Characteristics - BLM Photo Log
Clark Ranch - OR-034-060**

PHOTO LOCATION *	DIRECTION	PHOTO_TYPE	PHOTO_DATE	COMMENTS
034-RT86-A	E	Route	20091117	Graded. Berms.
034-RT86-A	E	Route	20091117	Graded. Berms.
034-RT86-B	W	Route	20091117	Graded. Berms.
034-RT86-B	SE	Route	20091117	Graded. Berms.
034-RT86-C	NW	Route	20091117	Large berms.
034-RT86-D	E	Route	20091117	Berms.
034-RT86-D	W	Route	20091117	Berms.
034-RT87-A	S	Route	20091117	Berms.
034-RT87-A	N	Route	20091117	Berms.
034-RT87-B	S	Route	20091117	Berms.
034-RT87-B	N	Route	20091117	Berms.
034-RT87-C	S	Route	20091117	Berms.
034-RT87-C	N	Route	20091117	Berms.
034-RT87-D	SE	Route	20091117	Three track
034-RT87-D	NW	Route	20091117	Three track
034-RT87-E	SW	Route	20091117	Small berms.
034-RT87-E	NE	Route	20091117	Small berms.
034-RT87-F	SW	Route	20091117	Small berms.
034-RT87-F	NE	Route	20091117	Small berms.
034-RT87-G	SW	Route	20091117	Small berms.
034-RT87-G	NE	Route	20091117	Small berms.

Note: The BLM Wild Char PhotoPoints displayed on the map are labeled with their Photo Locations. The BLM Photo Log table shown above lists the photos taken at their respective Photo Locations. Multiple photos may be taken at each Photo Location.

Legend

- Developed Spring
- Wildlife Quilzer
- Wetland Reserve
- Hydrate
- Permit
- Mineral Reserve Site
- Wilderness Study Area
- BLM Wild Char Inventory Photo Points
- BLM Wild Char Inventory Photo Points

Route Types - BLM Determination

- Boundary Road
- Authorized Primitive Trail (APT)
- Authorized Primitive Trail (APT)
- Development Use
- Roads - Opened Wild Char Trail
- County
- Adopt Highway
- BLM Numbered & Other Roads

Map Scale

0 0.5 1 2 Kilometers
0 0.5 1 2 Miles

**U.S. DEPARTMENT OF THE INTERIOR
BUREAU OF LAND MANAGEMENT**

**VALE DISTRICT
December 16, 2009**

--FINAL--



034-RT86-A-E.JPG



034-RT86-B-W.JPG



034-RT86-D-E.JPG



034-RT86-A-W.JPG



034-RT86-C-NW.JPG



034-RT86-D-W.JPG



034-RT86-B-E.JPG



034-RT86-C-SE.JPG



034-RT87-A-N.JPG



034-RT87-A-S.JPG



034-RT87-B-N.JPG



034-RT87-B-S.JPG



034-RT87-C-N.JPG



034-RT87-C-S.JPG



034-RT87-D-NW.JPG



034-RT87-D-SE.JPG



034-RT87-E-NE.JPG



034-RT87-E-SW.JPG



034-RT87-F-NE.JPG



034-RT87-G-SW.JPG

Clark Ranch OR-034-060 Page 3



034-RT87-F-SW.JPG



034-RT87-G-NE.JPG

**H-6300-1-WILDERNESS INVENTORY MAINTENANCE
IN BLM OREGON/WASHINGTON**

APPENDIX C – ROAD* ANALYSIS

(Factors to consider when determining whether a route is a road for wilderness inventory purposes.)

Wilderness Inventory Unit Name/Number: OR-034-060 --- Clark Ranch

NOTE: This unit is affected by ONDA’s proposed Sacramento Butte proposed WSA Addition

Route Name and/or Identifier (*Include Transportation Plan Identifier, if known; include route number supplied by citizen information when available*):

BLM 034-RT87

NOTE: ONDA identifies the route as –CM19”, a vehicular –wy” (i.e., what BLM terms a motorized primitive trail ([MPT]).

I. LOCATION: Refer to the attached map. The route is the inventory unit’s east and southeast boundary and abuts the Lower Owyhee Canyon WSA. **List photo point references (if applicable):** Refer to Vale District’s associated Photo Points map and affiliated Photo Log and photos – retained both in hard copy and electronically by Vale District.

II. CURRENT PURPOSE OF ROUTE:

(Examples: Rangeland/Livestock Improvements (stock tank, developed spring, reservoir, fence, corral), Inholdings (ranch, farmhouse), Mine Site, Concentrated Use Site (camp site), Utilities (transmission line, telephone, pipeline), Administrative (project maintenance, communication site, vegetation treatment).)

Describe: The route is between two private land parcels, one at each end of it. It was likely developed at the time of construction of four earthen reservoirs (the late 1960’s–early 1970’s, at the time of the Vale District Rangeland Improvement Project) – all located within current the OR-034-060 inventory unit (there are no manmade developments associated with this route within the abutting Lower Owyhee Canyon WSA). A rangeland fence is also proximate to the southern extent of the route. Primary vehicular access to both private land parcels has been and continues to be accomplished via other routes which are still recognized as roads by BLM. The route was identified by BLM as a road during the late 1970’s characteristics inventory, thus served as boundary for an inventory unit east and south of it which in 1980 was designated by BLM as the Lower Owyhee Canyon WSA. The route presently appears to be occasionally traveled by the recreating public, and possibly for administration of the grazing allotment where the route is located.

III. ROAD RIGHT-OF-WAY:

Is a road right-of-way associated with this route?

Yes _____ No X Unknown _____

IV. CONSTRUCTION

Yes X No _____

Examples: Paved _____ Bladed _____ Graveled _____ Roadside
Berms X Cut/Fill _____ Other _____

Describe: Date of original construction is not confirmed. There remains scattered nominal visual evidence of a berm, likely mechanically established at the time of the route's construction. What remains of it is substantially covered by significant amounts of vegetation (sagebrush and grasses).

V. IMPROVEMENTS

Yes _____ No X

By Hand Tools _____ By Machine _____

Examples: Culverts _____ Stream Crossings _____ Bridges _____
Drainage _____ Barriers _____ Other _____

Describe: None observed.

VI. MAINTENANCE:

A. Is there Evidence or Documentation of Maintenance using hand tools or machinery? Yes _____ No X

If yes: Hand Tools (Y/N) _____ Machine (Y/N) _____

Explain: None observed.

B. If the route is in good condition, but there is no evidence of maintenance, would mechanical maintenance with hand tools or machines be approved by BLM in the event this route became impassable?

Yes _____ No X

Comments: The nature of the terrain (near flat; no rocks large enough to hinder reasonable vehicle passage) precludes the need for mechanical maintenance. Access determined needed for maintenance of the reservoirs or rangeland fence can and would be accomplished without the need of mechanical maintenance of the route.

VII. REGULAR AND CONTINUOUS USE:

Yes X No

Describe evidence (vehicle tracks observed) and other rationale for whether use has occurred and will continue to occur on a relatively regular basis:

Visual evidence of recent vehicle passes observed. Thus noted, the route is characterized by segments of low-profiled woody and grass between the traveled tread (axle) alignments of the route. Frequency of travel likely increases during the hunting season -- since there are no other uses which would attract visitors to the route's associated area.

VIII. CONCLUSION:

To meet the definition of a road, items IV or V, and VI-A or B, and VII must be checked yes.

Road: Yes No X

Explanation: The route does not meet the criteria for a road, as described and explained above. This results in the inventory unit OR-034-060 Clark Ranch being contiguous with the Lower Owyhee Canyon WSA, with the route being a motorized primitive trail (MPT).

Evaluator(s): Steve Christensen Date: 12-16-2008
 Steve Christensen, Rangeland Management Specialist
Eian Ray Date: 12-16-2009
 Eian Ray, GIS Specialist, contractor

* **road:** An access route which has been **improved and maintained** by **mechanical means** to insure **relatively regular and continuous use**. A way maintained solely by the passage of vehicles does not constitute a road.

a. **“Improved and maintained”** – Actions taken physically by people to keep the road open to vehicle traffic. “Improved” does not necessarily mean formal construction. “Maintained” does not necessarily mean annual maintenance.

b. **—Mechanical means”** – Use of hand or power machinery or tools.

c. —**Relatively regular and continuous use**” – Vehicular use that has occurred and will continue to occur on a relatively regular basis. Examples are: access roads for equipment to maintain a stock water tank or other established water sources; access roads to maintained recreation sites or facilities; or access roads to mining claims.

Following is the definition from Glossary of OSO 7-3-2007 Draft H-6300-1:

road: The BLM will continue to base the definition of what constitutes a “road” from the FLPMA’s legislative history. The language below is from the House of Representatives Committee Report 94-1163, page 17, dated May 15, 1976, on what became the FLPMA. It is the only statement regarding the definition of a road in the law or legislative history.

“The word ‘roadless’ refers to the absence of roads which have been improved and maintained by mechanical means to insure relatively regular and continuous use. A way maintained solely by the passage of vehicles does not constitute a road.”

The BLM previously adopted and will continue to use the following sub-definitions of certain words and phrases in the BLM road definition stated above:

a. —**Improved and maintained**” – Actions taken physically by people to keep the road open to vehicle traffic. “Improved” does not necessarily mean formal construction. “Maintained” does not necessarily mean annual maintenance.

b. —**Mechanical means**” – Use of hand or power machinery or tools.

c. —**Relatively regular and continuous use**” – Vehicular use that has occurred and will continue to occur on a relatively regular basis. Examples are: access roads for equipment to maintain a stock water tank or other established water sources; access roads to maintained recreation sites or facilities; or access roads to mining claims.

A road that was established or has been maintained solely by the passage of vehicles would not be considered a road, even if it is used on a relatively regular and continuous basis. Vehicle roads constructed by mechanical means but that are no longer being maintained by mechanical methods are not roads. Sole use of hands and feet to move rocks or dirt without the use of tools or machinery does not meet the definition of “mechanical means.” Roads need not be “maintained” on a regular basis but rather “maintained” when road conditions warrant actions to keep it in a usable condition. A dead-end (cherry-stem) road can form the boundary of an inventory area and does not by itself disqualify an area from being considered “roadless”.