

Wilderness Inventory Unit Index of Documents
Chalk Butte OR-034-046, 10 total pages

Page 1: Index Cover Sheet

[Page 2: Form 1 – Documentation of BLM Wilderness Inventory: Findings on Record](#)

[Page 5: Form 2 – Documentation of Current Wilderness Inventory Conditions](#)

[Page 8: Form 2 – Summary of Findings and Conclusion](#)

[Page 9: Wilderness Characteristics Overview–Chalk Butte OR-034-046 Map 1 of 2](#)

[Page 10: Wilderness Characteristics-Land Treatments-Chalk Butte OR-034-046 Map 2 of 2](#)

**Prepared by:
U.S. Department of the Interior
Bureau of Land Management
Vale District Office
100 Oregon Street
Vale, Oregon 97918**



H-6300-1-WILDERNESS INVENTORY MAINTENANCE IN BLM OREGON/WASHINGTON

APPENDIX B – INVENTORY AREA EVALUATION

Evaluation of Current Conditions:

- 1) Document and review the existing BLM wilderness inventory findings on file, if available, regarding the presence or absence of individual wilderness characteristics, using Form 1, below.
- 2) Consider relevant information regarding current conditions available in the office to identify and describe any changes to the existing information (use interdisciplinary (ID) team knowledge, aerial photographs, field observations, maps, etc.), and document your findings on Form 2, below.

When Citizen Information has been submitted regarding wilderness characteristics, document the submitted materials including: date of Submission; Name of District(s) and Field Office(s) Affected; Type of material Submitted (e.g. narrative, map, photo). Evaluate any submitted citizen information regarding the validity of proposed boundaries of the unit(s), the existence of roads and other boundary features, the size of the unit(s), and the presence or absence of wilderness characteristics based on relevant information available in the office (prior BLM inventories, ID team knowledge, aerial photographs, field observations, maps, etc.)

Conduct field reviews as necessary to verify information and to ascertain current conditions. Reach conclusions on current conditions including boundaries, size of areas and presence or absence of wilderness characteristics. Fully explain the basis for each conclusion on form 2, including any critical differences between BLM and citizen information.

Document your findings regarding current conditions for each inventoried area. Describe how the present conditions are similar to, or have changed from, the conditions documented in the original wilderness inventory. Document your findings on Form 2 for each inventory area. Cite to or attach data considered, including photographs, maps, GIS layers, field trip notes, project files, *etc.*

Year: 2009 **Unit Number/Name:** OR-034-046 --- Chalk Butte

**FORM 1 -- DOCUMENTATION OF BLM WILDERNESS INVENTORY
FINDINGS ON RECORD**

1. Is there existing BLM wilderness inventory information on all or part of this area?

Yes No (If yes, and if more than one unit is within the area, list the names of those units.):

A.) Inventory Source(s) -- (X) Denotes all applicable BLM Inventory files, printed maps, or published BLM Decision documents with information pertaining to this unit.

Wilderness Inventories

- (X) 1978 – BLM Wilderness Inventory Units 3-63 of OR-03-04-33 Chalk Butte; OR-03-04-35 Mitchell Butte; OR-03-04-36 Yellow Jacket; OR-03-04-37 Dry Spring, OR-03-04-38 Rock Spring Canyon (unpublished BLM documents stored in 6-way case files)
- (X) April 1979 – *Wilderness -- Proposed Initial Inventory – Roadless Areas and Islands Which Clearly Do Not have Wilderness Characteristics, Oregon and Washington*

Wilderness Decision Documents

- (X) August 1979 – *Wilderness Review – Initial Inventory, Final Decision on Public Lands Obviously Lacking Wilderness Characteristics and Announcement of Public Lands to be Intensively Inventoried for Wilderness Characteristics, Oregon and Washington* (green document)
- () October 1979 – *Wilderness Review – Intensive Inventory - Oregon, Proposed Decision on the Intensive Wilderness Inventory of Selected Areas* (grey document).
- () March 1980 – *Wilderness Review – Intensive Inventory; Final Decisions on 30 Selected Units in Southeast Oregon and Proposed Decisions on Other Intensively Inventoried Units in Oregon and Washington* (orange document)
- () November 1980 - *Wilderness Inventory – Oregon and Washington, Final Intensive Inventory Decisions* (brown document)
- () November 1981 *Stateline Intensive Wilderness Inventory Final Decision, Oregon, Idaho, Nevada, Utah* (tan document).

B.) Inventory Unit Name(s)/Number(s)

BLM 3-63 of OR-03-04-33 Chalk Butte; OR-03-04-35 Mitchell Butte; OR-03-04-36 Yellow Jacket; OR-03-04-37 Dry Spring, OR-03-04-38 Rock Spring Canyon.

C.) Map Name(s)/Number(s)

- Final Decision – Initial Wilderness Inventory Map, August 1979, Oregon
- Proposed Decision -- Intensive Wilderness Inventory of Selected Areas Map, October 1979, Oregon
- Intensive Wilderness Inventory Map, March 1980, Oregon
- Intensive Wilderness Inventory --Final Decisions Map, November 1980, Oregon.
- November, 1981 *Stateline Intensive Wilderness Inventory Final Decision, Oregon, Idaho, Nevada, Utah* (tan document).

D.) BLM District(s)/Field Office(s)

Vale District Office/ Malheur Field Office

2. BLM Inventory Findings on Record

(Existing inventory information regarding wilderness characteristics (if more than one BLM inventory unit is associated with the area, list each unit and answer each question individually for each inventory unit):

Inventory Source: See above.

Unit#/ Name	Size (historic acres)	Natural Condition? Y/N	Outstanding Solitude? Y/N	Outstanding Primitive & Unconfined Recreation? Y/N	Supplemental Values? Y/N
(3-63) OR-03-04-33 Chalk Butte	5,000	N	*	*	*
OR-03-04-35 Mitchell Butte	1,700	*	*	*	*
OR-03-04-36 Yellow Jacket	4,700	*	*	*	*
OR-03-04-37 Dry Spring	4,300	*	*	*	*
OR-03-04-38 Rock Spring Canyon	3,620	*	*	*	*
TOTAL	19,320				

*-- These criteria were not specifically addressed in the inventory of this unit.

H-6300-1-WILDERNESS INVENTORY MAINTENANCE IN BLM OREGON/WASHINGTON

APPENDIX B – INVENTORY AREA EVALUATION

Evaluation of Current Conditions:

- 1) Document and review the existing BLM wilderness inventory findings on file, if available, regarding the presence or absence of individual wilderness characteristics, using Form 1, below.
- 2) Consider relevant information regarding current conditions available in the office to identify and describe any changes to the existing information (use interdisciplinary (ID) team knowledge, aerial photographs, field observations, maps, etc.), and document your findings on Form 2, below.

When Citizen Information has been submitted regarding wilderness characteristics, document the submitted materials including: date of Submission; Name of District(s) and Field Office(s) Affected; Type of material Submitted (e.g. narrative, map, and photos). Evaluate any submitted citizen information regarding the validity of proposed boundaries of the unit(s), the existence of roads and other boundary features, the size of the unit(s), and the presence or absence of wilderness characteristics based on relevant information available in the office (prior BLM inventories, ID team knowledge, aerial photographs, field observations, maps, etc.)

Conduct field reviews as necessary to verify information and to ascertain current conditions. Reach conclusions on current conditions including boundaries, size of areas and presence or absence of wilderness characteristics. Fully explain the basis for each conclusion on form 2, including any critical differences between BLM and citizen information.

Document your findings regarding current conditions for each inventoried area. Describe how the present conditions are similar to, or have changed from, the conditions documented in the original wilderness inventory. Document your findings on Form 2 for each inventory area. Cite to or attach data considered, including photographs, maps, GIS layers, field trip notes, project files, *etc.*

FORM 2 -- DOCUMENTATION OF CURRENT WILDERNESS INVENTORY CONDITIONS

Unit Number/Name: OR-034-046 --- Chalk Butte

Description of Current Conditions: [Include land ownership, location, topography, vegetation features and summary of major human uses/activities.]

1. Is the unit of sufficient size?

Yes X No

Description: Refer to the inventory unit's associated Map 1 for its location. The 20,697-acre unit is about four times larger than the original 1970's unit due to vehicle routes associated with the historic unit's south and west boundaries changing from road (then) to motorize primitive trail now. The unit is bound by BLM roads 7320-0-00, 7328-0-0B0 and 7328-0-00; County roads 3655 and 3668; and, along its east by private lands. The roads receive mechanical maintenance as needed to keep them passable on a relatively regular and continuous basis.

2. Is the unit in a natural condition?

Yes No X N/A

Description: The unit is characterized by predominately rolling hills with multiple drainages flowing in various directions toward the unit's boundaries. Elevations range from approximately 2,640 feet near its east boundary to 3,834 feet of Shell Rock Butte. Vegetation consists predominately of sagebrush and both native and non-native grass species.

Refer to this unit's associated Maps 1 and 2 for human imprints. They include 30.6 miles of rangeland fence, 4 buried pipelines totaling 9.9 miles, 11 troughs, 5 developed springs, 22 earthen reservoirs, 6 fenced enclosures, and 37 miles of 17 motorized primitive trails. Additionally, there are 4.6 miles of 7 segments of abandoned vehicle routes which currently are no longer or nominally visually distinguishable to the average visitor of the unit. For the average visitor of the unit, remnant minor visual evidence may be observed of a small portion of a total of 650 acres in four locations that were drill-seeded in 2005 for wildfire rehabilitation. Nine other land treatments which occurred between 1965 and 2003 are no longer visually apparent to the average visitor.

All of the existing visually apparent human imprints are distributed widely throughout the unit. Due to the extent and distribution of the various types of man-made developments in the context of the natural features of the unit, the unit does not appear to be affected primarily by the forces of nature, with imprints of man's work substantially noticeable throughout the area.

3. Does the unit have outstanding opportunities for solitude?

Yes _____ No _____ N/A X

Description:

4. Does the unit have outstanding opportunities for primitive and unconfined recreation?

Yes _____ No _____ N/A X

Description:

5. Does the unit have supplemental values?

Yes _____ No _____ N/A X

Description:

Summary of Findings and Conclusion

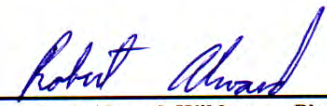
Unit Name and Number: OR-034-046 --- Chalk Butte

Summary Results of Analysis:

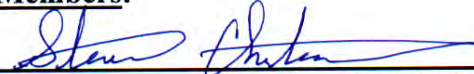
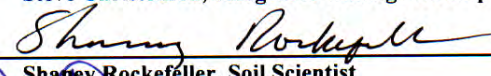
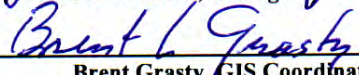
- 1. Does the area meet any of the size requirements? Yes No
- 2. Does the area appear to be natural? Yes No
- 3. Does the area offer outstanding opportunities for solitude or a primitive and unconfined type of recreation? Yes No NA
- 4. Does the area have supplemental values? Yes No N/A

Conclusion -- check one:

- The area, or a portion of the area, has wilderness character.
- The area does not have wilderness character.

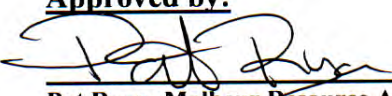
Prepared by: 
Robert Alward, Wilderness Planner contractor

Team Members:

<u></u>	<u>4-13-2009</u>
Steve Christensen, Rangeland Management Specialist	Date
<u></u>	<u>4/12/09</u>
Shaney Rockefeller, Soil Scientist	Date
<u></u>	<u>4.13.2009</u>
Dave Draheim, Outdoor Recreation Planner	Date
<u></u>	<u>04/13/2009</u>
Jon Westfall, Geologist	Date
<u></u>	<u>4/13/09</u>
Brent Grasty, GIS Coordinator	Date

(NOTE: Previous staff members who reviewed this unit include Botanist Jean Finley (retired 7/2008), and Wildlife Biologist Technician Sandy Vistine Ambor (transferred 8/2008)).

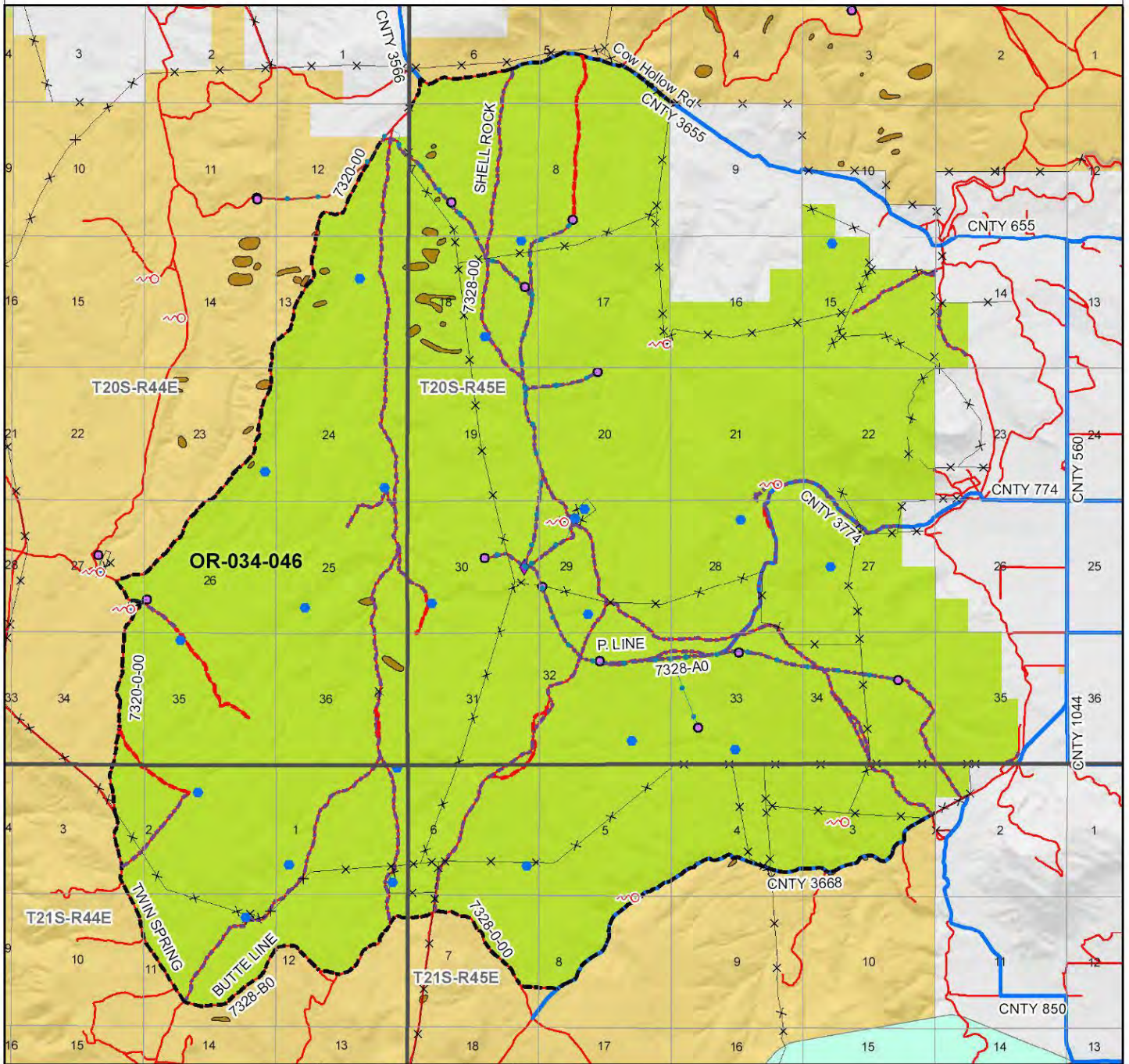
Approved by:

 10/15/10
Pat Ryan, Malheur Resource Area Field Manager Date

This form documents information that constitutes an inventory finding on wilderness characteristics. It does not represent a formal land use allocation or a final agency decision subject to administrative remedies under either 43 CFR parts 4 or 1610.5-2.

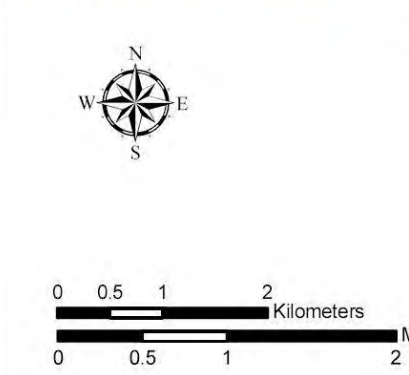
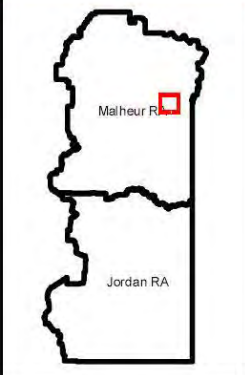
Wilderness Characteristics - Overview

Chalk Butte - OR-034-046 - Map 1 of 2



Legend

<ul style="list-style-type: none"> Developed Spring Wildlife Guzzler Earthen Reservoir Pipeline Trough Fence Storage Tank Surface Mining Disturbance Sage Grouse Lek Special Status Plant BLM Wild Char Inventory Unit Wilderness Study Area Mineral Material Site Road/Utility Right-of-Way Major Water Body 	<ul style="list-style-type: none"> Route Types - BLM Determination Boundary Road Motorized Primitive Trail (MPT) Discontinued Use Routes - Outside Wild Char Unit County Major Highway BLM Numbered & Other Routes <p>Land Ownership</p> <ul style="list-style-type: none"> Bureau of Land Management State Private Other Federal Land
---------------------------------------------------------------------------------------------------------------------------------------------------------------------------------------------------------------------------------------------------------------------------------------------------------------------------------------------------------------------------------------------------------------------------------------------------------------------------	---------------------------------------------------------------------------------------------------------------------------------------------------------------------------------------------------------------------------------------------------------------------------------------------------------------------------------------------------------------------------------------------------------------------------------------------------------------------------------------



U.S. DEPARTMENT OF THE INTERIOR
BUREAU OF LAND MANAGEMENT

VALE DISTRICT
January 9, 2009

No warranty is made by the Bureau of Land Management as to the accuracy, reliability, or completeness of these data for individual or aggregate use with other data. Original data were compiled from various sources. This information may not meet National Map Accuracy Standards. This product was developed through digital means and may be updated without notification.

--FINAL--

