

Wilderness Inventory Unit Index of Documents
Cascade OR-036-043, 11 total pages

Page 1: Index Cover Sheet

[Page 2: Form 1 – Documentation of BLM Wilderness Inventory: Findings on Record](#)

[Page 5: Form 2 – Documentation of Current Wilderness Inventory Conditions](#)

[Page 9: Form 2 – Summary of Findings and Conclusion](#)

[Page 10: Wilderness Characteristics Overview–Cascade OR-036-043 Map 1 of 2](#)

[Page 11: Wilderness Characteristics-Land Treatments-Cascade OR-036-043 Map 2 of 2](#)

**Prepared by:
U.S. Department of the Interior
Bureau of Land Management
Vale District Office
100 Oregon Street
Vale, Oregon 97918**



H-6300-1-WILDERNESS INVENTORY MAINTENANCE IN BLM OREGON/WASHINGTON

APPENDIX B – INVENTORY AREA EVALUATION

Evaluation of Current Conditions:

- 1) Document and review the existing BLM wilderness inventory findings on file, if available, regarding the presence or absence of individual wilderness characteristics, using Form 1, below.
- 2) Consider relevant information regarding current conditions available in the office to identify and describe any changes to the existing information (use interdisciplinary (ID) team knowledge, aerial photographs, field observations, maps, etc.), and document your findings on Form 2, below.

When Citizen Information has been submitted regarding wilderness characteristics, document the submitted materials including: date of Submission; Name of District(s) and Field Office(s) Affected; Type of material Submitted (e.g. narrative, map, photo). Evaluate any submitted citizen information regarding the validity of proposed boundaries of the unit(s), the existence of roads and other boundary features, the size of the unit(s), and the presence or absence of wilderness characteristics based on relevant information available in the office (prior BLM inventories, ID team knowledge, aerial photographs, field observations, maps, etc.)

Conduct field reviews as necessary to verify information and to ascertain current conditions. Reach conclusions on current conditions including boundaries, size of areas and presence or absence of wilderness characteristics. Fully explain the basis for each conclusion on form 2, including any critical differences between BLM and citizen information.

Document your findings regarding current conditions for each inventoried area. Describe how the present conditions are similar to, or have changed from, the conditions documented in the original wilderness inventory. Document your findings on Form 2 for each inventory area. Cite to or attach data considered, including photographs, maps, GIS layers, field trip notes, project files, *etc.*

Year: 2010 **Unit Number/Name:** OR-036-043 - Cascade

**FORM 1 -- DOCUMENTATION OF BLM WILDERNESS INVENTORY
FINDINGS ON RECORD**

1. Is there existing BLM wilderness inventory information on all or part of this area?

Yes No (If yes, and if more than one unit is within the area, list the names of those units.):

A.) Inventory Source(s) -- (X) Denotes all applicable BLM Inventory files, printed maps, or published BLM Decision documents with information pertaining to this unit.

Wilderness Inventories

- (X) 1978 – BLM Wilderness Inventory Units 3-169 of OR-03-12-39 Cascade; and 3-170 of OR-03-12-41 Ninety Five; OR-03-12-40 Lousy Steer (unpublished BLM documents stored in Vale District case files)
- (X) April 1979 – *Wilderness -- Proposed Initial Inventory – Roadless Areas and Islands Which Clearly Do Not have Wilderness Characteristics, Oregon and Washington*

Wilderness Decision Documents

- (X) August 1979 – *Wilderness Review – Initial Inventory, Final Decision on Public Lands Obviously Lacking Wilderness Characteristics and Announcement of Public Lands to be Intensively Inventoried for Wilderness Characteristics, Oregon and Washington* (green document)
- () October 1979 – *Wilderness Review – Intensive Inventory - Oregon, Proposed Decision on the Intensive Wilderness Inventory of Selected Areas* (grey document).
- () March 1980 – *Wilderness Review – Intensive Inventory; Final Decisions on 30 Selected Units in Southeast Oregon and Proposed Decisions on Other Intensively Inventoried Units in Oregon and Washington* (orange document)
- () November 1980 - *Wilderness Inventory – Oregon and Washington, Final Intensive Inventory Decisions* (brown document)
- () November 1981 *Stateline Intensive Wilderness Inventory Final Decision, Oregon, Idaho, Nevada, Utah* (tan document).

B.) Inventory Unit Name(s)/Number(s)

BLM 3-169 of OR-03-12-39 Cascade; and 3-170 of OR-03-12-41 Ninety Five;
OR-03-12-40 Lousy Steer

C.) Map Name(s)/Number(s)

- Final Decision – Initial Wilderness Inventory Map, August 1979, Oregon
- Proposed Decision -- Intensive Wilderness Inventory of Selected Areas Map, October 1979, Oregon
- Intensive Wilderness Inventory Map, March 1980, Oregon
- Intensive Wilderness Inventory --Final Decisions Map, November 1980, Oregon.
- November, 1981 *Stateline Intensive Wilderness Inventory Final Decision, Oregon, Idaho, Nevada, Utah* (tan document).

D.) BLM District(s)/Field Office(s)

Vale District Office

Jordan Field Office

2. BLM Inventory Findings on Record

(Existing inventory information regarding wilderness characteristics (if more than one BLM inventory unit is associated with the area, list each unit and answer each question individually for each inventory unit):

Inventory Source: See above.

Unit# / Name	Size (historic acres)	Natural Condition? Y/N	Outstanding Solitude? Y/N	Outstanding Primitive & Unconfined Recreation? Y/N	Supplemental Values? Y/N
3-169 of OR-03-12-39 Cascade	6,000	N	*	*	*
3-170 of OR-03-12-41 Ninety Five	6,460	*	N	N	*
OR-03-12-40 Lousy Steer	2,080	*	*	*	*
TOTAL	14,540				

* These criteria were not specifically addressed during the inventory of these units.

H-6300-1-WILDERNESS INVENTORY MAINTENANCE IN BLM OREGON/WASHINGTON

APPENDIX B – INVENTORY AREA EVALUATION

Evaluation of Current Conditions:

- 1) Document and review the existing BLM wilderness inventory findings on file, if available, regarding the presence or absence of individual wilderness characteristics, using Form 1, below.
- 2) Consider relevant information regarding current conditions available in the office to identify and describe any changes to the existing information (use interdisciplinary (ID) team knowledge, aerial photographs, field observations, maps, etc.), and document your findings on Form 2, below.

When Citizen Information has been submitted regarding wilderness characteristics, document the submitted materials including: date of Submission; Name of District(s) and Field Office(s) Affected; Type of material Submitted (e.g. narrative, map, and photos). Evaluate any submitted citizen information regarding the validity of proposed boundaries of the unit(s), the existence of roads and other boundary features, the size of the unit(s), and the presence or absence of wilderness characteristics based on relevant information available in the office (prior BLM inventories, ID team knowledge, aerial photographs, field observations, maps, etc.)

Conduct field reviews as necessary to verify information and to ascertain current conditions. Reach conclusions on current conditions including boundaries, size of areas and presence or absence of wilderness characteristics. Fully explain the basis for each conclusion on form 2, including any critical differences between BLM and citizen information.

Document your findings regarding current conditions for each inventoried area. Describe how the present conditions are similar to, or have changed from, the conditions documented in the original wilderness inventory. Document your findings on Form 2 for each inventory area. Cite to or attach data considered, including photographs, maps, GIS layers, field trip notes, project files, *etc.*

FORM 2 -- DOCUMENTATION OF CURRENT WILDERNESS INVENTORY CONDITIONS

Unit Number/Name: OR-036-043 -- Cascade

Description of Current Conditions: [Include land ownership, location, topography, vegetation features and summary of major human uses/activities.]

1. Is the unit of sufficient size?

Yes X No

Description: Refer to this inventory unit's associated Map 1 for its location. The 14,687 acre unit was included as part of the original BLM units OR-03-12-39, OR-03-12-40, and OR-03-12-41 of the latter 1970's meeting the size criteria. Acreage for unit OR-036-043 in Form 2 is calculated from BLM GIS information. The remaining 147 acre difference from Form 1 was either not calculated properly or resulted from a rounding error from methods and maps used in the initial 1978 inventory. The unit boundary consists of a utility corridor right-of-way and a portion of one mineral material site right-of-way on its west side, a utility corridor right-of-way on its south side, BLM road 6362-0-00 on its east side, and BLM road 6364-0-00 that is straddled by two non-numbered road segments and a portion of one mineral material site right-of-way on its north side. The eastern road segment lies between BLM roads 6362-0-00 and 6364-0-00 and the western segment lies between BLM road 6364-0-00 and the utility corridor along the western boundary. The boundary roads receive mechanical maintenance as needed to keep them passable on a regular and continuous (seasonal) basis.

2. Is the unit in a natural condition?

Yes No X N/A

Description: The unit consists of rolling terrain which gently slopes to the east. The vegetation is sagebrush, greasewood, and both native and nonnative grasses. Elevations range from 4,750 to 5,746 feet.

Refer to this inventory unit's associated Map 1 and Map 2 for its human developments. Human imprints within the unit include 24.0 miles of 12 motorized primitive trails, 7.7 miles of fenceline, 9.1 miles of 3 pipeline systems with 12 troughs, 4 earthen reservoirs, a corral, one fenced reservoir enclosure, and one structure. There is remnant visual evidence of one (0.5 miles) discontinued vehicle route and 3 vegetation manipulation (implemented 1965-1970) projects.

Because the 3 vegetation treatments affecting the unit occurred approximately forty years ago and pasture fence lines partially obscure treatment edge effects, presently, to the average visitor, the treatments appear mostly individually and collectively – indistinguishable from the residual native vegetation. Close to 3000 acres of the unit contains a designated common use area for the collection of decorative flat rock. This common use area encompasses all public lands within the unit in sections 18, 19, 30 and 31 of township T37S-R43E and sections 06 and 07 of township of T38S-R43E.

Due to the number of intrusions, particularly the interlaced WPTs and pipelines, their proximity to each other, and the lack of topographic and vegetative screening, the works of man are substantially noticeable. Overall, the area appears to be primarily affected by the influences of man with the imprint of humans noticeable to the average visitor. BLM arrives at the same conclusion as did the 1970's inventory that unit OR-036-043 does not appear natural to the average visitor.

3. Does the unit have outstanding opportunities for solitude?

Yes _____ No X N/A _____

Description: Refer to this inventory unit's associated Map 1 for visual of unit configuration. The unit is approximately 8 miles long and up to 4 miles wide near the center of unit and tapers to less than 2 miles wide on the north and south areas of the unit. The majority of the unit consists of a flat to rolling open sagebrush plateau that slopes to the east.

Topographic relief is minimal within the unit with elevations ranging from 4,764 to 5,746. Elevation changes in most of the unit traversing from west to east are gradual. The unit lacks vegetative screening, the broad expanses of low and big sagebrush with limit the ability for a visitor to find seclusion. Despite the relatively large size of the unit, the long and narrow configuration of unit is not conducive to provide opportunities for solitude. The sights and sounds emanating from traffic on U.S. Highway 95 detract from opportunities for solitude along much of the unit's western edge. The present inventory agrees with the 1979 inventory that determined the area did not have outstanding opportunities for solitude based on the irregular or narrow shape, absence of vegetation screening, and little diversity in relief. Because of the reasons stated above, BLM concludes that unit OR-036-043 does not provide outstanding opportunities for solitude.

4. Does the unit have outstanding opportunities for primitive and unconfined recreation?

Yes _____ No X N/A _____

Description: Opportunities for primitive and unconfined types of recreation are available in the unit. However, opportunities for activities such as hiking, backpacking, hunting, wildlife viewing, horseback riding and photography are not outstanding because the unit lacks scenic quality, diversity of landforms, and challenging terrain. The present

inventory agrees with the 1979 inventory that determined the area did not possess outstanding opportunities for primitive and unconfined recreation although opportunities were documented for hunting and hiking, they are (in agreement with latter 1970's inventories) not considered to be outstanding. Because of the reasons stated above, BLM concludes that unit OR-036-043 does not possess outstanding opportunities for primitive and unconfined recreation.

5. Does the unit have supplemental values?

Yes No N/A

Description: BLM has documented 2 sage grouse leks within the unit. The bird is a BLM special status animal species.

Summary of Findings and Conclusion

Unit Name and Number: OR-036-034 -- Cascade

Summary Results of Analysis:

- 1. Does the area meet any of the size requirements? Yes No
- 2. Does the area appear to be natural? Yes No
- 3. Does the area offer outstanding opportunities for solitude or a primitive and unconfined type of recreation? Yes No NA
- 4. Does the area have supplemental values? Yes No NA

Conclusion -- check one:

The area, or a portion of the area, has wilderness character.

The area does not have wilderness character.

Prepared by: Jack Wenderoth 3/3/10
Jack Wenderoth, Planning Contractor

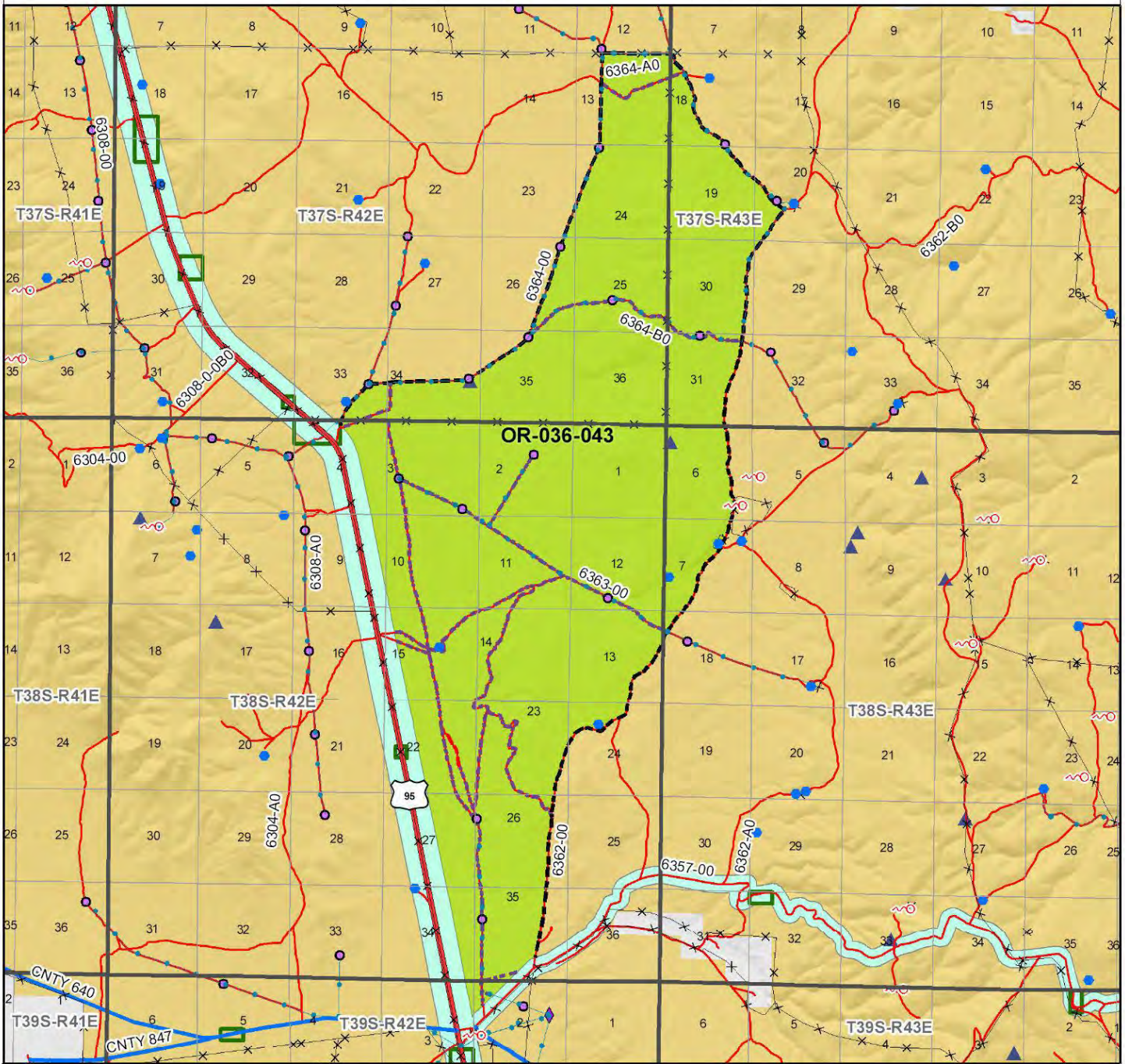
Team Members:

<u>Richard White</u>	<u>3/19/2010</u>
Richard White, Rangeland Management Specialist	Date
<u>Dave Draheim</u>	<u>2/10/10</u>
Dave Draheim, Outdoor Recreation Planner	Date
<u>Garth Ross</u>	<u>3/23/2010</u>
Garth Ross, Wildlife Biologist	Date
<u>John Sadowski</u>	<u>3-4-2010</u>
John Sadowski, Environmental Contractor	Date
<u>Eian Ray</u>	<u>03/03/10</u>
Eian Ray, GIS Specialist, Contractor	Date
<u>Brent Grasty</u>	<u>3/19/10</u>
Brent Grasty, GIS Coordinator	Date

Approved by: Carolyn R. Freeborn 4/6/10
Carolyn Freeborn, Jordan Resource Area Field Manager Date

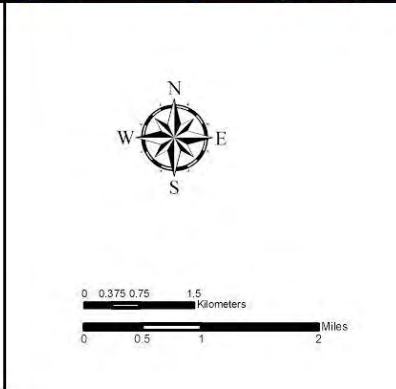
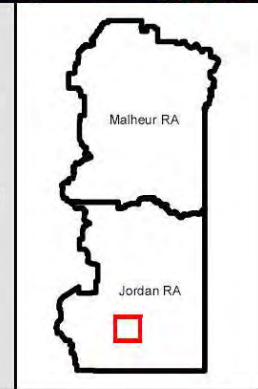
This form documents information that constitutes an inventory finding on wilderness characteristics. It does not represent a formal land use allocation or a final agency decision subject to administrative remedies under either 43 CFR parts 4 or 1610.5-2.

Wilderness Characteristics - Overview Cascade - OR-036-043 - Map 1 of 2



Legend

Developed Spring	Route Types - BLM Determination
Wildlife Guzzler	Boundary Road
Earthen Reservoir	Motorized Primitive Trail (MPT)
Pipeline	Discontinued Use
Trough	Routes - Outside Wild Char Unit
Fence	County
Storage Tank	Major Highway
Surface Mining Disturbance	BLM Numbered & Other Routes
Sage Grouse Lek	Land Ownership
Special Status Plant	Bureau of Land Management
BLM Wild Char Inventory Unit	State
Wilderness Study Area	Private
Mineral Material Site	Other Federal Land
Road/Utility Right-of-Way	
Major Water Body	



U.S. DEPARTMENT OF THE INTERIOR
BUREAU OF LAND MANAGEMENT

VALE DISTRICT
November 19, 2009

No warranty is made by the Bureau of Land Management as to the accuracy, reliability, or completeness of these data for individual or aggregate use with other data. Original data were compiled from various sources. This information may not meet National Map Accuracy Standards. This product was developed through digital means and may be updated without notification.

--FINAL--

