

# Memo

August 29, 2012

**To:** Files – Vale District Wilderness Characteristics (WC) Inventory – WC  
Inventory units: OR-036-003 Cairn C; OR-036-004 Oregon Butte; OR-036-005  
Deer Flat; and OR-036-033 Long Ridge

**From:** Pat Ryan, Field Manager, Malheur and Jordan Resource Areas, Vale District  
Robert Alward, Wilderness Planner, contractor, Vale District

**Subject:** WC Status of WC units OR-036-003 Cairn C; OR-036-004 Oregon Butte; OR-  
036-005 Deer Flat; and OR-036-033 Long Ridge OR-036-101, as they relate  
to the status of Winnemucca District's WC Inventory

The four Subject Vale District wilderness characteristics (WC) inventory units are considered by Vale District to be contiguous to adjacent preliminarily identified (by Vale District) WC inventory units within Winnemucca District. The present identifier for each of the Winnemucca preliminary WC inventory units has been assigned by Vale District. These identifiers are preliminary, to eventually be replaced by identifiers (and WC inventory unit names) which Winnemucca District would eventually establish.

In 2007 and 2010 Vale District identified – and with related WC inventory findings determined – WC inventory units within Vale District along the NV state line. OR-036-003 is contiguous to Winnemucca District's NV-01000-VL3; OR-036-004 is contiguous to NV-01000-VL4; OR-036-005 is contiguous to NV-01000-VL5; and OR-036-033 is contiguous to NV-01000-VL33 (see the attached 4 Vale District - generated maps). Refer to the WC file of each of Vale District's Subject WC inventory units for the current (2007 and 2010) Vale District WC inventory findings.

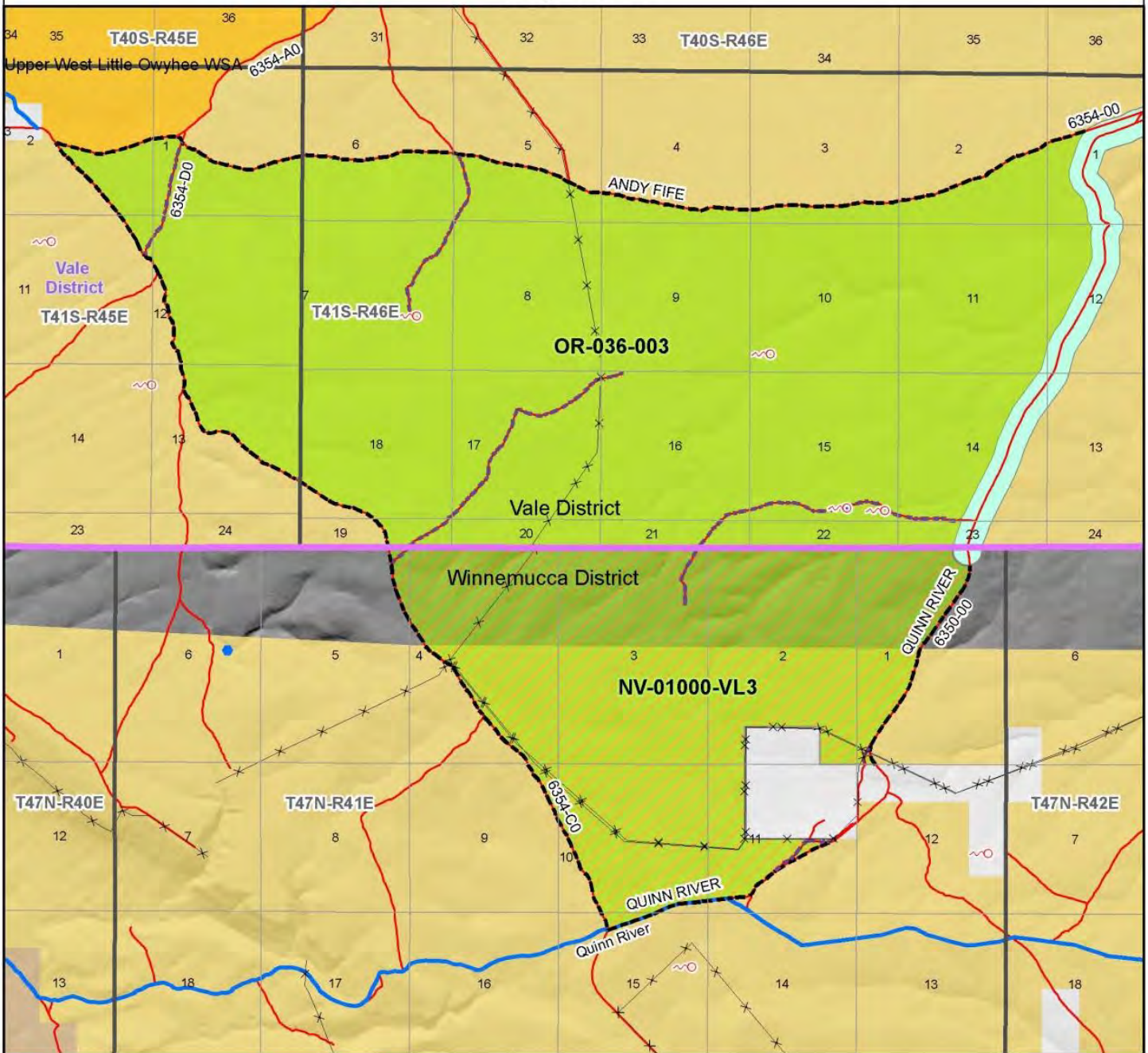
To date during 2012, following the 2011 BLM national issuance of instruction for conducting WC inventory, Vale District has renewed coordination efforts with Winnemucca District for updating WC inventory of public lands bordering the two district's common administrative boundary (State line). Vale District provided Winnemucca District copies of its applicable 2007 and 2010 Form 1, Form 2 and associated map(s) for the 4 WC inventory units bordering that district. Inter-district coordination efforts are reflected in copies of e-mails retained in the Vale District WC files (hard copy) for each of the 4 units.

When Winnemucca District provides Vale District its WC inventory maintenance information, and as a result should updates of WC maintenance be mutually determined to be needed for an inventory unit, then Vale District will incorporate the new information, and a copy of the updated WC inventory maintenance records for the unit(s) will be provided to Winnemucca District. Until such time, the applicable 2007 and 2010 WC findings within Vale District for the 4 Vale District WC inventory units remain unchanged.

# Wilderness Characteristics - Overview

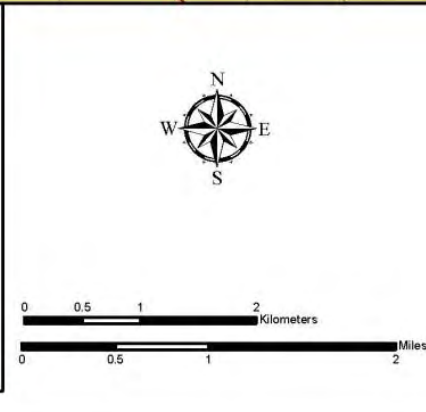
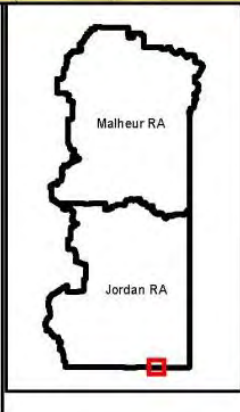
## Cairn C, OR-036-003 / NV-01000-VL3

### Map 1 of 1



**Legend**

Developed Spring	<b>Route Types - BLM Determination</b>
Wildlife Guzzler	Boundary Road
Earthen Reservoir	Motorized Primitive Trail (MPT)
Pipeline	Discontinued Use
Trough	<b>Routes - Outside Wild Char Unit</b>
Fence	County
Storage Tank	Major Highway
Surface Mining Disturbance	BLM Numbered & Other Routes
Sage Grouse Lek	<b>Land Ownership</b>
Special Status Plant	Bureau of Land Management
OR Wild Char Inventory Unit	State
NV Wild Char Inventory Unit	Private
Wilderness Study Area	Other Federal Land
Mineral Material Site	District Boundary
Road/Utility Right-of-Way	
Major Water Body	



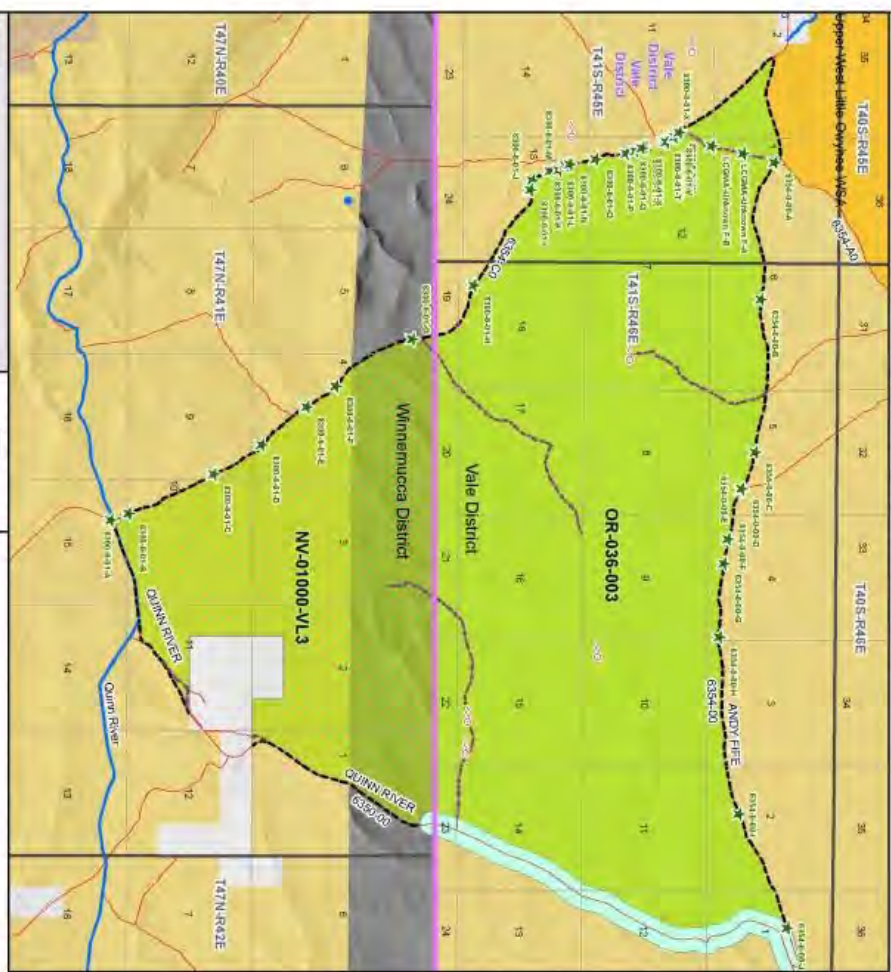
**U.S. DEPARTMENT OF THE INTERIOR**  
BUREAU OF LAND MANAGEMENT

**VALE DISTRICT**  
April 26, 2012

No warranty is made by the Bureau of Land Management as to the accuracy, reliability, or completeness of these data for individual or aggregate use with other data. Original data were compiled from various sources. This information may not meet National Map Accuracy Standards. This product was developed through digital means and may be updated without notification.

--FINAL--

**Wilderness Characteristics - BLM Photo Points**  
**Caim C, OR-036-003 / NV-01000-VL3**



**Legend**

- Developed Area
- Wilderness Study
- Boundary
- Right-of-Way
- State Road
- County Road
- Local Road
- Other Road
- Other Features
- Other Boundaries
- Other Features
- Other Boundaries

**U.S. DEPARTMENT OF THE INTERIOR**  
**BUREAU OF LAND MANAGEMENT**

**VALE DISTRICT**  
 April 28, 2012

Scale: 0 0.25 0.5 Miles

North Arrow

Inset Map: Shows location of Caim C within the state of Nevada.

**Wilderness Characteristics - BLM Photo Points**  
**Caim C, OR-036-003 / NV-01000-VL3**

PHOTO LOCATION *	DIRECTION	PHOTO TYPE	PHOTO DATE	COMMENTS
6354-0-00-A	S	Route	20070417	Turning into Deer Creek, Onda Disputed
6354-0-00-B	W	Route	20070417	Road Continues, Onda Disputed
6354-0-00-C	W	Route	20070417	Road Continues, Onda Disputed
6354-0-00-D	W	Route	20070417	Gate To Upper Louisa Canyon Pasture
6354-0-00-E	N	Route	20070417	Rd Up Fence Line, Onda Disputed
6354-0-00-F	NW	Route	20070417	Visible For Long Distance, Onda Disputed
6354-0-00-G	W	Route	20070417	Bladed Road, Onda Disputed
6354-0-00-H	W	Route	20070417	Bladed Road, Onda Disputed
6354-0-00-I	W	Route	20070417	Bladed Road, Onda Disputed
6354-0-00-J	W	Route	20070417	Bladed Road, Onda Disputed
6354-0-00-K	W	Route	20070417	Along Landing Strip - Onda Disputed
8300-6-01-A	NW	Route	20070425	Good Road
8300-6-01-B	NW	Route	20070425	Good Road
8300-6-01-C	NW	Route	20070425	Gate?????
8300-6-01-D	NW	Route	20070425	30 Mph Road
8300-6-01-E	NW	Route	20070425	Good Road
8300-6-01-F	NW	Route	20070425	Entered Little Owl/Free Alignment
8300-6-01-G	NW	Route	20070425	Good Road
8300-6-01-H	NW	Route	20070425	Road Visible For Miles
8300-6-01-I	N	Route	20070911	Looking Down
8300-6-01-J	NW	Route	20070425	Road Intersects Above Deer Creek
8300-6-01-K	N	Route	20070911	Headed Off Rim
8300-6-01-L	N	Route	20070911	Entering Bottom
8300-6-01-M	S	Route	20070911	Looking Back Up
8300-6-01-N	N	Route	20070911	
8300-6-01-O	N	Route	20070911	
8300-6-01-P	N	Route	20070911	
8300-6-01-Q	NE	Route	20070911	Visible Road
8300-6-01-R	N	Route	20070911	
8300-6-01-S	NE	Route	20070911	
8300-6-01-T	SW	Route	20070911	
8300-6-01-U	NE	Route	20070911	
8300-6-01-V	N	Route	20070911	Towards Tent Creek
8300-6-01-W	E	Route	20070911	
8300-6-01-X	SE	Route	20070417	
8300-6-06-G	W	Route	20070425	From Tent Creek Road
LC30M-L-Uhnow n F-A	S	Route	20070417	Up Out Of Deer Creek - Onda Disputed
LC30M-L-Uhnow n F-B	S	Route	20070417	Up Out Of Deer Creek - Onda Disputed

**Note:** The BLM Wild Char PhotoPoints displayed on the map are labeled with their Photo Locations. The BLM Photo Log table shown above lists the photos taken at their respective Photo Locations. Multiple photos may be taken at each Photo Location. Scenery and Project Photo Type pictures have their photo names provided in the Comments field.