

Wilderness Inventory Unit Index of Documents  
**Buckbrush OR-036-037, 10 total pages**

Page 1: Index Cover Sheet

[Page 2: Form 1 – Documentation of BLM Wilderness Inventory: Findings on Record](#)

[Page 5: Form 2 – Documentation of Current Wilderness Inventory Conditions](#)

[Page 8: Form 2 – Summary of Findings and Conclusion](#)

[Page 9: Wilderness Characteristics Overview–Buckbrush OR-036-037 Map 1 of 2](#)

[Page 10: Wilderness Characteristics-Land Treatments-Buckbrush OR-036-037 Map 2 of 2](#)

**Prepared by:**  
**U.S. Department of the Interior**  
**Bureau of Land Management**  
**Vale District Office**  
**100 Oregon Street**  
**Vale, Oregon 97918**



## **H-6300-1-WILDERNESS INVENTORY MAINTENANCE IN BLM OREGON/WASHINGTON**

### **APPENDIX B – INVENTORY AREA EVALUATION**

#### **Evaluation of Current Conditions:**

- 1) Document and review the existing BLM wilderness inventory findings on file, if available, regarding the presence or absence of individual wilderness characteristics, using Form 1, below.
- 2) Consider relevant information regarding current conditions available in the office to identify and describe any changes to the existing information (use interdisciplinary (ID) team knowledge, aerial photographs, field observations, maps, etc.), and document your findings on Form 2, below.

When Citizen Information has been submitted regarding wilderness characteristics, document the submitted materials including: date of Submission; Name of District(s) and Field Office(s) Affected; Type of material Submitted (e.g. narrative, map, photo). Evaluate any submitted citizen information regarding the validity of proposed boundaries of the unit(s), the existence of roads and other boundary features, the size of the unit(s), and the presence or absence of wilderness characteristics based on relevant information available in the office (prior BLM inventories, ID team knowledge, aerial photographs, field observations, maps, etc.)

Conduct field reviews as necessary to verify information and to ascertain current conditions. Reach conclusions on current conditions including boundaries, size of areas and presence or absence of wilderness characteristics. Fully explain the basis for each conclusion on form 2, including any critical differences between BLM and citizen information.

Document your findings regarding current conditions for each inventoried area. Describe how the present conditions are similar to, or have changed from, the conditions documented in the original wilderness inventory. Document your findings on Form 2 for each inventory area. Cite to or attach data considered, including photographs, maps, GIS layers, field trip notes, project files, *etc.*

**Year:** 2009      **Unit Number/Name:** OR-036-037 -- Buckbrush

**FORM 1 -- DOCUMENTATION OF BLM WILDERNESS INVENTORY  
FINDINGS ON RECORD**

**1. Is there existing BLM wilderness inventory information on all or part of this area?**

Yes  No  (If yes, and if more than one unit is within the area, list the names of those units.):

**A.) Inventory Source(s) -- (X) Denotes all applicable BLM Inventory files, printed maps, or published BLM Decision documents with information pertaining to this unit.**

**Wilderness Inventories**

- (X) 1978-1980 – BLM Wilderness Inventory Units partially of OR-03-12-12 Buckbrush; partially of OR-03-12-13 Hot Spring; OR-03-12-14 McDermitt Reseeding (unpublished BLM documents in case files)
- ( ) April 1979 – *Wilderness -- Proposed Initial Inventory – Roadless Areas and Islands Which Clearly Do Not have Wilderness Characteristics, Oregon and Washington*

**Wilderness Decision Documents**

- ( ) August 1979 – *Wilderness Review – Initial Inventory, Final Decision on Public Lands Obviously Lacking Wilderness Characteristics and Announcement of Public Lands to be Intensively Inventoried for Wilderness Characteristics, Oregon and Washington* (green document)
- ( ) October 1979 – *Wilderness Review – Intensive Inventory - Oregon, Proposed Decision on the Intensive Wilderness Inventory of Selected Areas* (grey document).
- ( ) March 1980 – *Wilderness Review – Intensive Inventory; Final Decisions on 30 Selected Units in Southeast Oregon and Proposed Decisions on Other Intensively Inventoried Units in Oregon and Washington* (orange document)
- ( ) November 1980 - *Wilderness Inventory – Oregon and Washington, Final Intensive Inventory Decisions* (brown document)
- ( ) November 1981 *Stateline Intensive Wilderness Inventory Final Decision, Oregon, Idaho, Nevada, Utah* (tan document).

**B.) Inventory Unit Name(s)/Number(s)**

partially of BLM OR-03-12-12 Buckbrush; partially OR-03-12-13 Hot Spring; OR-03-12-14 McDermitt Reseeding

**C.) Map Name(s)/Number(s)**

- ( ) Final Decision – Initial Wilderness Inventory Map, August 1979, Oregon
- ( ) Proposed Decision -- Intensive Wilderness Inventory of Selected Areas Map, October 1979, Oregon
- ( ) Intensive Wilderness Inventory Map, March 1980, Oregon
- ( ) Intensive Wilderness Inventory --Final Decisions Map, November 1980, Oregon.
- ( ) November, 1981 *Stateline Intensive Wilderness Inventory Final Decision, Oregon, Idaho, Nevada, Utah* (tan document).

**D.) BLM District(s)/Field Office(s)**

Vale District Office/ Jordan Field Office

**2. BLM Inventory Findings on Record**

(Existing inventory information regarding wilderness characteristics (if more than one BLM inventory unit is associated with the area, list each unit and answer each question individually for each inventory unit):

**Inventory Source:** See above.

Unit#/ Name	Size (historic acres)	Natural Condition? Y/N	Outstanding Solitude? Y/N	Outstanding Primitive & Unconfined Recreation? Y/N	Supplemental Values? Y/N
Partially of OR-03-12-12 Buckbrush	5,260	*	*	*	*
Partially of OR-03-12-13 Hot Spring	3,200	*	*	*	*
OR-03-12-14 McDermitt Reseeding	4,300	*	*	*	*
<b>TOTAL</b>	12,760				

\* -- Determinations for these criteria were not described for the inventory unit; in part due to two of the above units not meeting size criteria.

## **H-6300-1-WILDERNESS INVENTORY MAINTENANCE IN BLM OREGON/WASHINGTON**

### **APPENDIX B – INVENTORY AREA EVALUATION**

#### **Evaluation of Current Conditions:**

- 1) Document and review the existing BLM wilderness inventory findings on file, if available, regarding the presence or absence of individual wilderness characteristics, using Form 1, below.
- 2) Consider relevant information regarding current conditions available in the office to identify and describe any changes to the existing information (use interdisciplinary (ID) team knowledge, aerial photographs, field observations, maps, etc.), and document your findings on Form 2, below.

When Citizen Information has been submitted regarding wilderness characteristics, document the submitted materials including: date of Submission; Name of District(s) and Field Office(s) Affected; Type of material Submitted (e.g. narrative, map, and photos). Evaluate any submitted citizen information regarding the validity of proposed boundaries of the unit(s), the existence of roads and other boundary features, the size of the unit(s), and the presence or absence of wilderness characteristics based on relevant information available in the office (prior BLM inventories, ID team knowledge, aerial photographs, field observations, maps, etc.)

Conduct field reviews as necessary to verify information and to ascertain current conditions. Reach conclusions on current conditions including boundaries, size of areas and presence or absence of wilderness characteristics. Fully explain the basis for each conclusion on form 2, including any critical differences between BLM and citizen information.

Document your findings regarding current conditions for each inventoried area. Describe how the present conditions are similar to, or have changed from, the conditions documented in the original wilderness inventory. Document your findings on Form 2 for each inventory area. Cite to or attach data considered, including photographs, maps, GIS layers, field trip notes, project files, *etc.*

## **FORM 2 -- DOCUMENTATION OF CURRENT WILDERNESS INVENTORY CONDITIONS**

**Unit Number/Name:** OR-036-037 -- Buckbrush

**Description of Current Conditions:** [Include land ownership, location, topography, vegetation features and summary of major human uses/activities.]

### **1. Is the unit of sufficient size?**

Yes   X   No       

**Description:** Refer to this inventory unit's associated Map 1 for its location. This 17,063 acre unit is a mix of 3 units of the late 1970's BLM wilderness characteristics inventory. The unit boundary consists of private property and County Road 825 on its south side, Highway 95 and associated right-of-way on its east side, County Road 823 on its north side, and a power transmission right-of-way on its west side. Also, a 320 acre private inholding is a feature of the unit's boundary. The boundary roads receive mechanical maintenance as needed to keep them passable on a relatively regular and seasonally continuous basis.

### **2. Is the unit in a natural condition?**

Yes        No   X   N/A       

**Description:** The majority of the unit consists of flat to rolling open sagebrush and grassland plateau that slopes to the west. The only variation in topographic relief in the unit is the intermittent Oregon Canyon Creek flowing north to south in the center of unit. Topographic relief is minimal within the unit with elevations ranging from approximately 4,440 to 4,978 feet. The unit consists of broad expanses of native and non-native grasses and low-profiled sagebrush.

Refer to this inventory unit's associated Map 1 and Map 2 for human imprints. Human imprints include 20.2 miles of 7 motorized primitive trails (MPT), 15.9 miles of rangeland fence, and one fenced enclosure. The unit also has 3.4 miles of 5 abandoned motorized vehicle routes of which all are no longer visually apparent. From 1966 through 2007, 16 land treatments have occurred, affecting a total of approximately half of the unit – all in the western half. There remains apparent visual evidence of linear furrows caused by a 2007 disc seeding of nonnative grasses, covering approximately 500 acres of the unit south of and abutting the unit's north central boundary road, and which has a temporary rangeland fence surrounding it until the seeding adequately establishes itself. The east half of the unit has 2 adjoining north-south oriented MPTs which dissect the length of the unit. Because of the number of intrusions, their proximity to each other,

and lack of topographic and vegetative screening, the works of man are substantially noticeable. Overall, the area appears to be affected by the works of humans with their collective imprints being substantially noticeable to the average visitor.

**3. Does the unit have outstanding opportunities for solitude?**

Yes \_\_\_\_\_ No   X   N/A \_\_\_\_\_

**Description:** This unit is generally square in shape, approximately 5 miles long and wide throughout with a 320 acre private parcel in the center of unit. The types, density, and distribution of vegetation types do not provide sufficient screening between visitors to provide outstanding opportunities for solitude. Because of the 20.2 mile network of spatially close MPTs which affect most of the unit's area combined with the absence of vegetative or topographic screening, this unit does not provide outstanding opportunities for solitude. Solitude is further hindered along the unit's length of its eastern sector by the unavoidable daily sounds of the proximate (though outside of unit) highway traffic.

**4. Does the unit have outstanding opportunities for primitive and unconfined recreation?**

Yes \_\_\_\_\_ No   X   N/A \_\_\_\_\_

**Description:** Opportunities for primitive and unconfined types of recreation are available in the unit. However, these opportunities including hiking, backpacking, hunting, wildlife viewing, horseback riding, and photography are not outstanding because the unit lacks scenic quality, diversity of landforms, challenging terrain, or unique or special features to draw a recreating visitor to the unit. Oregon Canyon Creek and associated drainage is the only topographic feature within the unit. For reasons described, the unit does not provide outstanding opportunities for primitive and unconfined recreation.

**5. Does the unit have supplemental values?**

Yes \_\_\_\_\_ No   X   N/A \_\_\_\_\_

**Description:**

**Summary of Findings and Conclusion**

**Unit Name and Number:** OR-036-037 --- Buckbrush

**Summary Results of Analysis:**

1. Does the area meet any of the size requirements?  Yes  No
2. Does the area appear to be natural?  Yes  No
3. Does the area offer outstanding opportunities for solitude or a primitive and unconfined type of recreation?  Yes  No  NA
4. Does the area have supplemental values?  Yes  No  NA

**Conclusion -- check one:**

The area, or a portion of the area, has wilderness character.

The area does not have wilderness character.

**Prepared by:** Robert Alward  
Robert Alward, Wilderness Planner, contractor

**Team Members:**

<u>Richard White</u>	4/29/10
Richard White, Rangeland Management Specialist	Date
<u>Marcy Egger</u>	5/19/10
Marcy Egger, Range Management Specialist	Date
<u>David Draheim</u>	2/10/10
David Draheim, Outdoor Recreation Planner	Date
<u>Garth Ross</u>	5/13/2010
Garth Ross, Wildlife Biologist	Date
<u>Jack Wenderoth</u>	5/17/10
Jack Wenderoth, Planning Contractor	Date
<u>Jon Sadowski</u>	4-28-2010
Jon Sadowski, Environmental Contractor	Date
<u>Ejan Ray</u>	5-14-10
Ejan Ray, GIS Specialist, contractor	Date
<u>Brent Grasty</u>	5/18/10
Brent Grasty, GIS Coordinator	Date

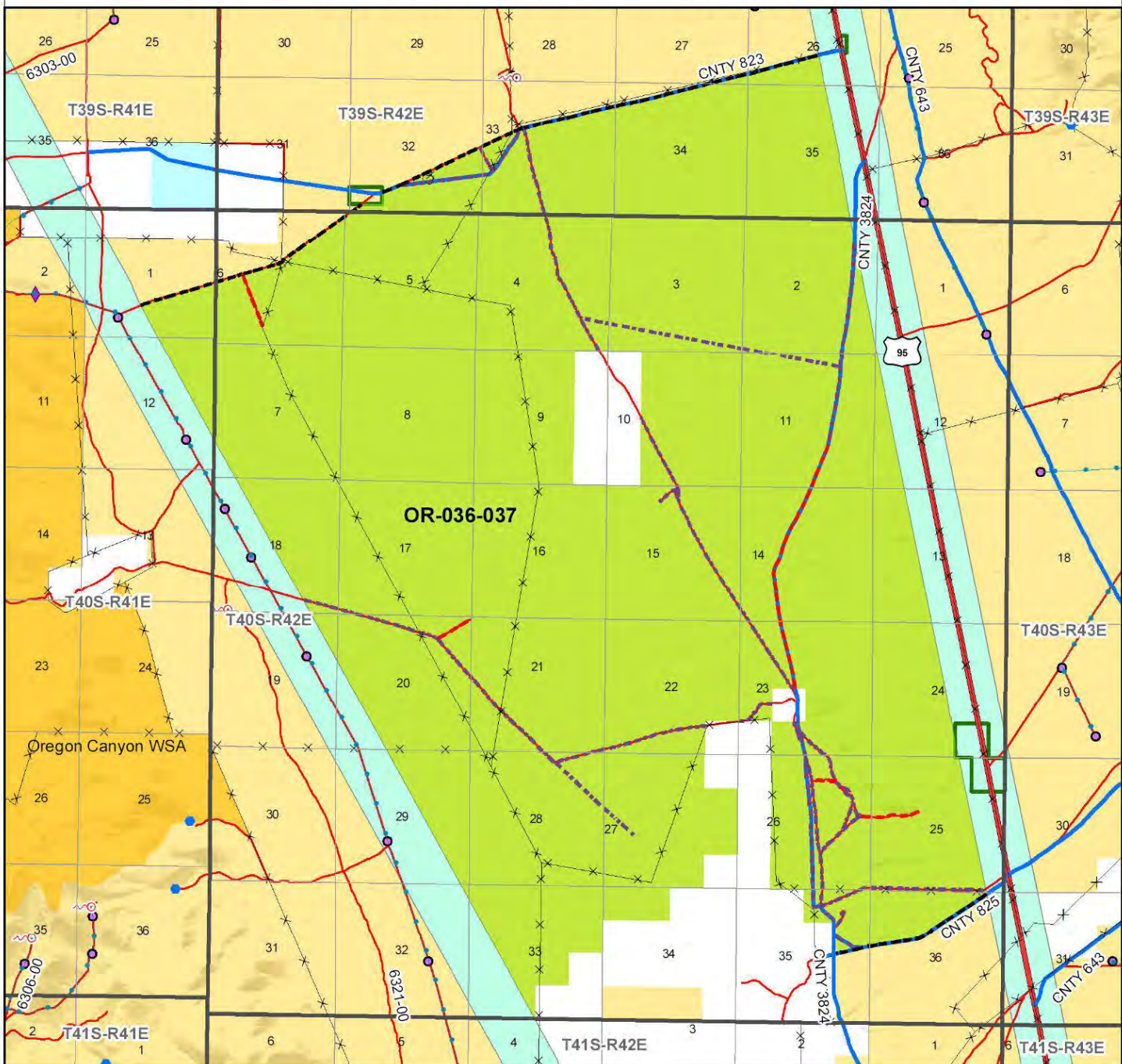
**Approved by:**

Carolyn R. Freeborn 7/19/2010  
Carolyn Freeborn, Jordan Resource Area Field Manager Date

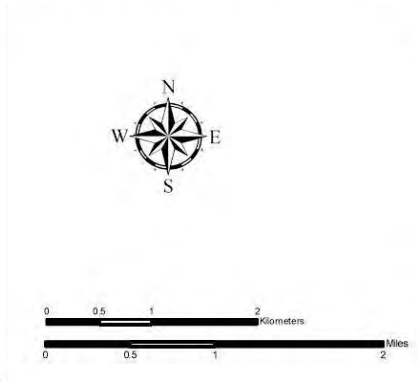
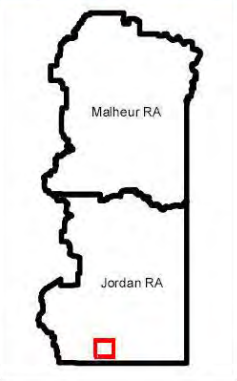
*This form documents information that constitutes an inventory finding on wilderness characteristics. It does not represent a formal land use allocation or a final agency decision subject to administrative remedies under either 43 CFR parts 4 or 1610.5-2.*



# Wilderness Characteristics - Overview Buckbrush - OR-036-037 - Map 1 of 2

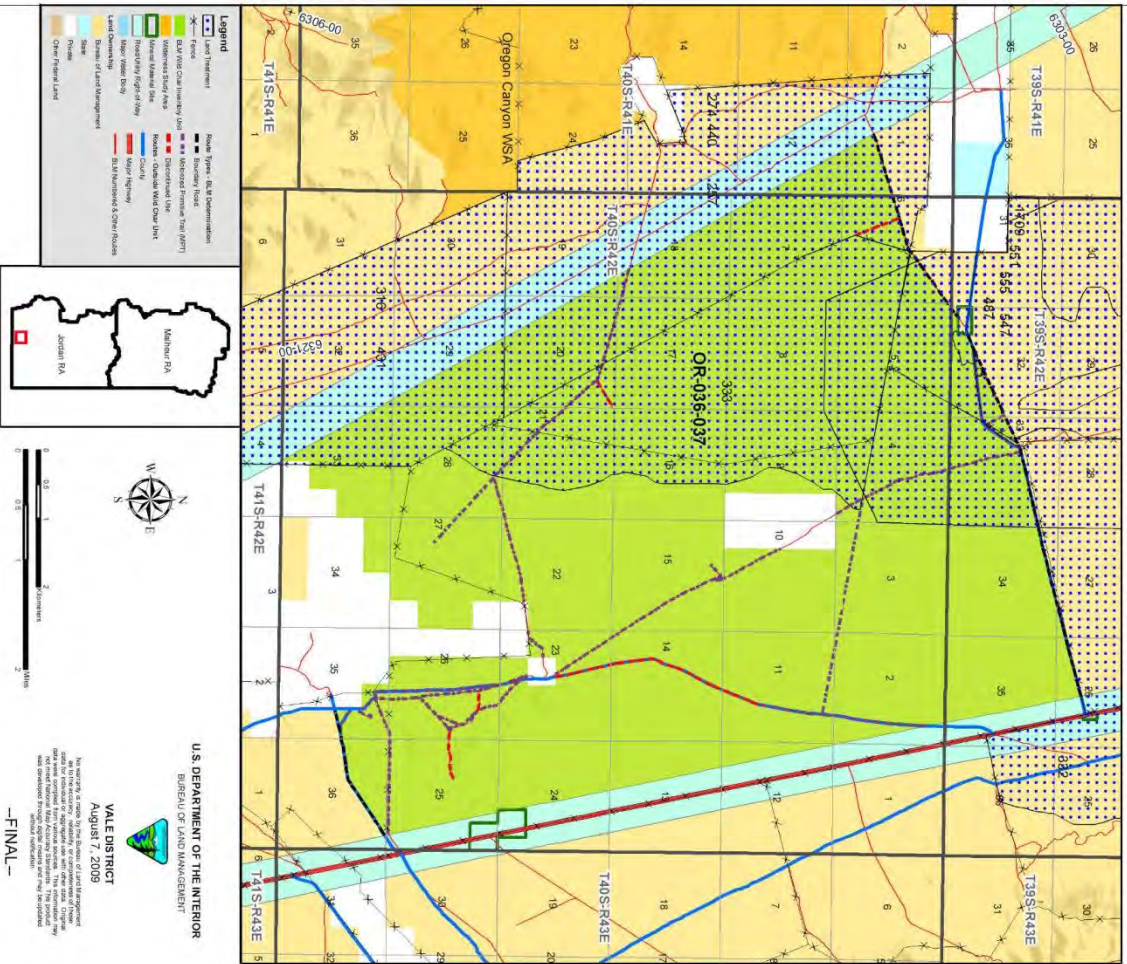


Legend	
	Developed Spring
	Wildlife Guzzler
	Earthen Reservoir
	Pipeline
	Trough
	Fence
	Storage Tank
	Surface Mining Disturbance
	Sage Grouse Lek
	Special Status Plant
	BLM Wild Char Inventory Unit
	Wilderness Study Area
	Mineral Material Site
	Road/Utility Right-of-Way
	Major Water Body
	Route Types - BLM Determination
	Boundary Road
	Motorized Primitive Trail (MPT)
	Discontinued Use
	Routes - Outside Wild Char Unit
	County
	Major Highway
	BLM Numbered & Other Routes
	Land Ownership
	Bureau of Land Management
	State
	Private
	Other Federal Land



**U.S. DEPARTMENT OF THE INTERIOR**  
 BUREAU OF LAND MANAGEMENT  
  
**VALE DISTRICT**  
 August 13, 2008  
No warranty is made by the Bureau of Land Management as to the accuracy, reliability, or completeness of these data for individual or aggregate use with other data. Original data were compiled from various sources. This information may not meet National Map Accuracy Standards. This product was developed through digital means and may be updated without notification.  
**-FINAL-**

**Wilderness Characteristics - Land Treatments**  
**Buckbrush - OR-036-037 - Map 2 of 2**



**Wilderness Characteristics - Land Treatments**  
**Buckbrush - OR-036-037 - Map 2 of 2**

OBJECTID*	NAME	TREATMENT TYPE	SEED GROUP	DATE
257	ANGEL CANYON SDG	Chemical Treatment	Not Applicable	1968
274	ANGEL CANYON SDG	Plow/Disc	Not Applicable	1968
316	FLAT TOP SDG	Chemical Treatment	Not Applicable	1966
332	SCHOOLHOUSE ESR	Drill Seeding	Non and Native Grass	1985
333	SCHOOLHOUSE ESR	Drill Seeding	Non and Native Grass	1985
431	FLAT TOP SDG	Drill Seeding	Non-native Grasses	1966
440	ANGEL CANYON SDG	Drill Seeding	Non-native Grasses	1968
487	MCDERMITT SDG	Drill Seeding	Unknown	1976
547	MSW4	Brushbeat	Non-native Grasses	2007
551	MSW4	Brushbeat	Not Applicable	2007/1000
555	MCDERMITT SEEDING WEST	Drill Seeding	Non-native Grasses	2007/1200
1709	MCDERMITT SEEDING WEST	Drill Seeding	Non-native Grasses	2007/1200
2047	BOARD CORRAL'S FIRE REHAB	Drill Seeding	A mix of non-native gr	1974
2104	COW HOLLOW SEEDING EXTENSION	Drill Seeding	Native Grasses	1996

Note: The Land Treatments represented by navy blue dots on the map to the left are labeled with the treatments' ObjectIDs listed in the first field of the Land Treatments table shown above. Multiple types of treatments may have been applied to the same area. For example, one treatment area may have been plowed and drill seeded - a record is shown in the table for each type of treatment.