

Wilderness Inventory Unit Index of Documents
Buckbrush Creek OR-034-078, 10 total pages

Page 1: Index Cover Sheet

[Page 2: Form 1 – Documentation of BLM Wilderness Inventory: Findings on Record](#)

[Page 5: Form 2 – Documentation of Current Wilderness Inventory Conditions](#)

[Page 8: Form 2 – Summary of Findings and Conclusion](#)

[Page 9: Wilderness Characteristics Overview – Buckbrush Creek OR-034-078 Map 1 of 2](#)

[Page 10: Wilderness Characteristics-Land Treatments-Buckbrush Creek OR-034-078 Map 2 of 2](#)

Prepared by:
U.S. Department of the Interior
Bureau of Land Management
Vale District Office
100 Oregon Street
Vale, Oregon 97918



H-6300-1-WILDERNESS INVENTORY MAINTENANCE IN BLM OREGON/WASHINGTON

APPENDIX B – INVENTORY AREA EVALUATION

Evaluation of Current Conditions:

- 1) Document and review the existing BLM wilderness inventory findings on file, if available, regarding the presence or absence of individual wilderness characteristics, using Form 1, below.
- 2) Consider relevant information regarding current conditions available in the office to identify and describe any changes to the existing information (use interdisciplinary (ID) team knowledge, aerial photographs, field observations, maps, etc.), and document your findings on Form 2, below.

When Citizen Information has been submitted regarding wilderness characteristics, document the submitted materials including: date of Submission; Name of District(s) and Field Office(s) Affected; Type of material Submitted (e.g. narrative, map, photo). Evaluate any submitted citizen information regarding the validity of proposed boundaries of the unit(s), the existence of roads and other boundary features, the size of the unit(s), and the presence or absence of wilderness characteristics based on relevant information available in the office (prior BLM inventories, ID team knowledge, aerial photographs, field observations, maps, etc.)

Conduct field reviews as necessary to verify information and to ascertain current conditions. Reach conclusions on current conditions including boundaries, size of areas and presence or absence of wilderness characteristics. Fully explain the basis for each conclusion on form 2, including any critical differences between BLM and citizen information.

Document your findings regarding current conditions for each inventoried area. Describe how the present conditions are similar to, or have changed from, the conditions documented in the original wilderness inventory. Document your findings on Form 2 for each inventory area. Cite to or attach data considered, including photographs, maps, GIS layers, field trip notes, project files, *etc.*

Year: 2009 **Unit Number/Name:** OR-034-078 — Buckbrush Creek

FORM 1 -- DOCUMENTATION OF BLM WILDERNESS INVENTORY FINDINGS ON RECORD

1. Is there existing BLM wilderness inventory information on all or part of this area?

Yes No (If yes, and if more than one unit is within the area, list the names of those units.):

A.) Inventory Source(s) -- (X) Denotes all applicable BLM Inventory files, printed maps, or published BLM Decision documents with information pertaining to this unit.

Wilderness Inventories

- (X) 1978 – BLM Wilderness Inventory Units 3-24 of OR-03-02-43 Buckbrush Creek (unpublished BLM documents stored in case files)
- () April 1979 – *Wilderness -- Proposed Initial Inventory – Roadless Areas and Islands Which Clearly Do Not have Wilderness Characteristics, Oregon and Washington*

Wilderness Decision Documents

- (X) August 1979 – *Wilderness Review – Initial Inventory, Final Decision on Public Lands Obviously Lacking Wilderness Characteristics and Announcement of Public Lands to be Intensively Inventoried for Wilderness Characteristics, Oregon and Washington* (green document)
- () October 1979 – *Wilderness Review – Intensive Inventory - Oregon, Proposed Decision on the Intensive Wilderness Inventory of Selected Areas* (grey document).
- (X) March 1980 – *Wilderness Review – Intensive Inventory; Final Decisions on 30 Selected Units in Southeast Oregon and Proposed Decisions on Other Intensively Inventoried Units in Oregon and Washington* (orange document)
- (X) November 1980 - *Wilderness Inventory – Oregon and Washington, Final Intensive Inventory Decisions* (brown document)
- () November 1981 *Stateline Intensive Wilderness Inventory Final Decision, Oregon, Idaho, Nevada, Utah* (tan document).

B.) Inventory Unit Name(s)/Number(s)

BLM 3-24 of OR-03-02-43 Buckbrush Creek

C.) Map Name(s)/Number(s)

- Final Decision – Initial Wilderness Inventory Map, August 1979, Oregon
- Proposed Decision -- Intensive Wilderness Inventory of Selected Areas Map, October 1979, Oregon
- Intensive Wilderness Inventory Map, March 1980, Oregon
- Intensive Wilderness Inventory --Final Decisions Map, November 1980, Oregon.
- November, 1981 *Stateline Intensive Wilderness Inventory Final Decision, Oregon, Idaho, Nevada, Utah* (tan document).

D.) BLM District(s)/Field Office(s)

Vale District Office/ Malheur Field Office

2. BLM Inventory Findings on Record

(Existing inventory information regarding wilderness characteristics (if more than one BLM inventory unit is associated with the area, list each unit and answer each question individually for each inventory unit):

Inventory Source: See above.

Unit#/ Name	Size (historic acres)	Natural Condition? Y/N	Outstanding Solitude? Y/N	Outstanding Primitive & Unconfined Recreation? Y/N	Supplemental Values? Y/N
3-24 of OR-03-02-43 Buckbrush Creek	7,800	N	N	N	N
TOTAL	7,800				

H-6300-1-WILDERNESS INVENTORY MAINTENANCE IN BLM OREGON/WASHINGTON

APPENDIX B – INVENTORY AREA EVALUATION

Evaluation of Current Conditions:

- 1) Document and review the existing BLM wilderness inventory findings on file, if available, regarding the presence or absence of individual wilderness characteristics, using Form 1, below.
- 2) Consider relevant information regarding current conditions available in the office to identify and describe any changes to the existing information (use interdisciplinary (ID) team knowledge, aerial photographs, field observations, maps, etc.), and document your findings on Form 2, below.

When Citizen Information has been submitted regarding wilderness characteristics, document the submitted materials including: date of Submission; Name of District(s) and Field Office(s) Affected; Type of material Submitted (e.g. narrative, map, photo). Evaluate any submitted citizen information regarding the validity of proposed boundaries of the unit(s), the existence of roads and other boundary features, the size of the unit(s), and the presence or absence of wilderness characteristics based on relevant information available in the office (prior BLM inventories, ID team knowledge, aerial photographs, field observations, maps, etc.)

Conduct field reviews as necessary to verify information and to ascertain current conditions. Reach conclusions on current conditions including boundaries, size of areas and presence or absence of wilderness characteristics. Fully explain the basis for each conclusion on form 2, including any critical differences between BLM and citizen information.

Document your findings regarding current conditions for each inventoried area. Describe how the present conditions are similar to, or have changed from, the conditions documented in the original wilderness inventory. Document your findings on Form 2 for each inventory area. Cite to or attach data considered, including photographs, maps, GIS layers, field trip notes, project files, *etc.*

FORM 2 -- DOCUMENTATION OF CURRENT WILDERNESS INVENTORY CONDITIONS

Description of Current Conditions: [Include land ownership, location, topography, vegetation features and summary of major human uses/activities.]

Unit Number/Name – OR-034-078 — Buckbrush Creek

1. Is the unit of sufficient size?

Yes X No _____

Description: Refer to this inventory unit's associated Map 1 for location. It consists of nearly the same area as the late 1970's 3-24 inventory unit. A difference is that OR-034-078's south boundary is a road, rather than a rangeland fence of 3-24. Its 9,720 acres of public land is bounded predominately by two north-south oriented roads – both oriented predominately with ridgelines either side of Buckbrush Creek -- which merge together on the north end of the unit on Cottonwood Mountain and are connected by the above stated east-west road on its south end. BLM road 7360-0-100 is the unit's west boundary. The variance in acreage from the 3-24 unit -- aside the change for the unit's south boundary -- is due to improved technology for determining area size since the late 1970's inventory was conducted. The roads are maintained as needed to provide for regular and continuous use.

2. Is the unit in a natural condition?

Yes X No _____ N/A _____

Description: The unit's terrain consists of high plateaus and rolling hills, the most noticeable topographic relief is in the northern region, closer to Cottonwood Mountain. The side drainages of Buckbrush Creek originate at the watershed crests, near the west and east boundary roads of the unit. Some of these drainages possess shallow rimrock outcrops. Elevations range from 3,220 to 5,800 feet. The vegetation consists predominately of native grasses, low profiled sagebrush, and few isolated older western juniper. The northern reaches of the inventory unit is being affected by recent encroachment of young western juniper beyond areas of the species historic natural distribution.

Refer to this unit's associated Map 1 and Map 2 for human imprints within the unit. There is 15.2 miles of rangeland fences, 2 developed springs, 6 earthen reservoirs and 6.3 miles of 9 motorized primitive trails (MPTs). Nominal visual contrast remains of a 2005 brush removal and associated disk-drill seeding of native grasses near the south boundary of the unit. No visual evidence remains of that portion of an approximate 1,400 acre 1969 disk-drill seeding that occurred within in the southernmost reach of the unit. Given that there no longer is the visual evidence of the 1969 disc seeding (unlike during the late 1970's inventory effort), while noting that all but one of the MPTs are close to the unit's

boundary roads and widely distributed within the unit, and that the type, distribution and location placement of the other developments -- relative to the nature of the unit's topography and terrain -- the unit, overall, presently appears to be affected primarily by the forces of nature with the imprint of humans being substantially unnoticeable to the average visitor. This is a change in finding from BLM's late 1970's inventory, in part due to the absence of visual evidence of the 1969 disc seeding.

3. Does the unit have outstanding opportunities for solitude?

Yes _____ No X N/A _____

Description: The unit is approximately 9 miles long and no greater than 2.25 miles wide with most of it less than 2 miles wide. The unit's northern-most 2 miles narrows to 1.0 – 0.25 miles width. The low-profiled sagebrush and scattered specimens of Western Juniper are not large enough or sufficiently spatially dense to provide for adequate vegetative screening to experience an outstanding opportunity for solitude. Along certain portions of the primary channel corridor of Buckbrush Creek a visitor would be able to experience a sense of solitude, particularly of those locations with steeper side slopes, but the limited extent of such settings precludes the opportunities from being outstanding. Locations within the unit of more so rolling terrain would provide even less of an opportunity for solitude. Nowhere in the unit does any combination of natural features provide for outstanding opportunities for solitude.

4. Does the unit have outstanding opportunities for primitive and unconfined recreation?

Yes _____ No X N/A _____

Description: The unit provides opportunities for hunting of common game species, (primarily chukar and deer) and associated hiking. These activities, individually or in combination – as well as there being no special or unique features, activities or attractions which would more so draw a visitor to the unit-- results in there being no outstanding opportunities for primitive and unconfined recreation.

5. Does the unit have supplemental values?

Yes X No _____ N/A _____

Description: BLM records indicate the presence of two leks associated with sage grouse, a BLM special status animal species.

Summary of Findings and Conclusion

Unit Name and Number: OR-034-078 — Buckbrush Creek

Summary Results of Analysis:

- 1. Does the area meet any of the size requirements? X Yes No
- 2. Does the area appear to be natural? X Yes No
- 3. Does the area offer outstanding opportunities for solitude or a primitive and unconfined type of recreation? Yes X No NA
- 4. Does the area have supplemental values? X Yes No NA

Conclusion -- check one:

- The area, or a portion of the area, has wilderness character.
- X The area does not have wilderness character.

Prepared by: Robert Alward
 Robert Alward, Wilderness Planner contractor

Team Members:

<u>Martin Espil</u>	<u>6/11/09</u>
Martin Espil, Rangeland Management Specialist	Date
<u>Steve Christensen</u>	<u>6/11/2009</u>
Steve Christensen, Rangeland Management Specialist	Date
<u>Shaney Rockefeller</u>	<u>6/11/09</u>
Shaney Rockefeller, Soil Scientist	Date
<u>Michelle Caviness</u>	<u>6/11/09</u>
Michelle Caviness, Wildlife Biologist	Date
<u>Gillian Wigglesworth</u>	<u>6/11/09</u>
Gillian Wigglesworth, Botanist	Date
<u>David Draheim</u>	<u>6/12/09</u>
David Draheim, Outdoor Recreation Planner	Date
<u>Brent Grasty</u>	<u>6/12/09</u>
Brent Grasty, GIS Coordinator	Date

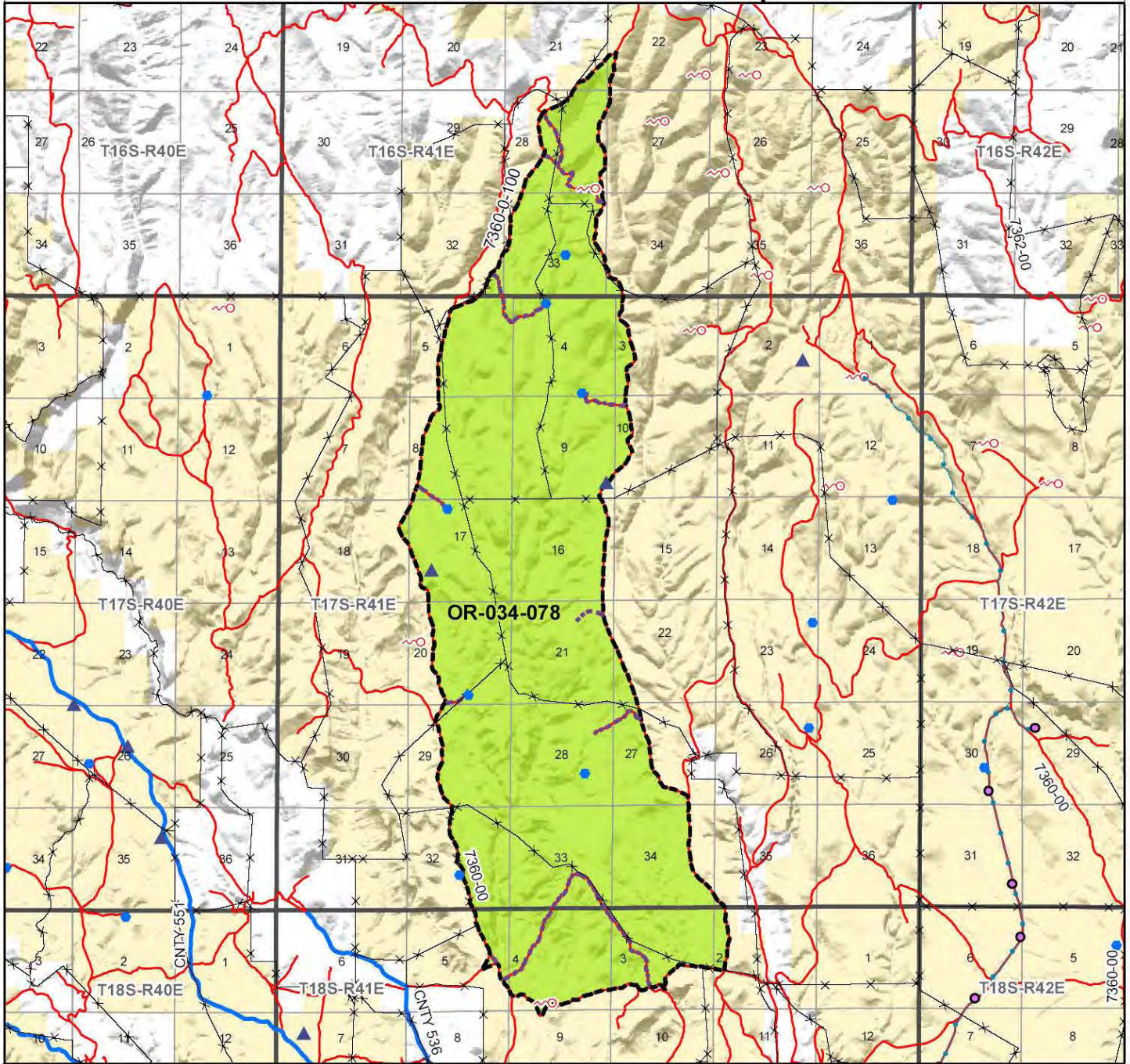
Approved by:

Pat Ryan 8/6/09
 Pat Ryan, Malheur Resource Area Field Manager Date

This form documents information that constitutes an inventory finding on wilderness characteristics. It does not represent a formal land use allocation or a final agency decision subject to administrative remedies under either 43 CFR parts 4 or 1610.5-2.

Wilderness Characteristics - Overview

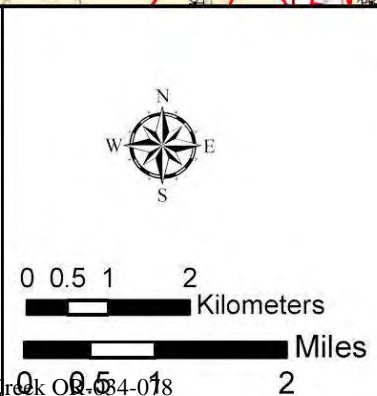
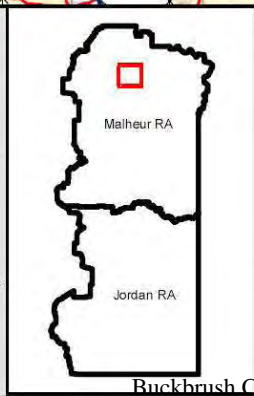
Buckbrush Creek - OR-034-078 - Map 1 of 2



Legend

	Developed Spring		BLM Wild Char Inventory Unit
	Wildlife Guzzler	Route Types - BLM Determination	
	Earthen Reservoir		Road
	Pipeline		Interior Cherry Stem Road
	Troughs		Motorized Primitive Trail (MPT)
	Fence		Discontinued Use
	Mineral Material Site	Routes - Outside Wild Char Unit	
	Road/Utility ROW		County
	Sage Grouse Lek		Major Highway
	Special Status Plant		BLM Numbered & Other Routes
	Wilderness Study Area	Ownership	
			Bureau of Land Management
			State

Wilderness Inventory Unit



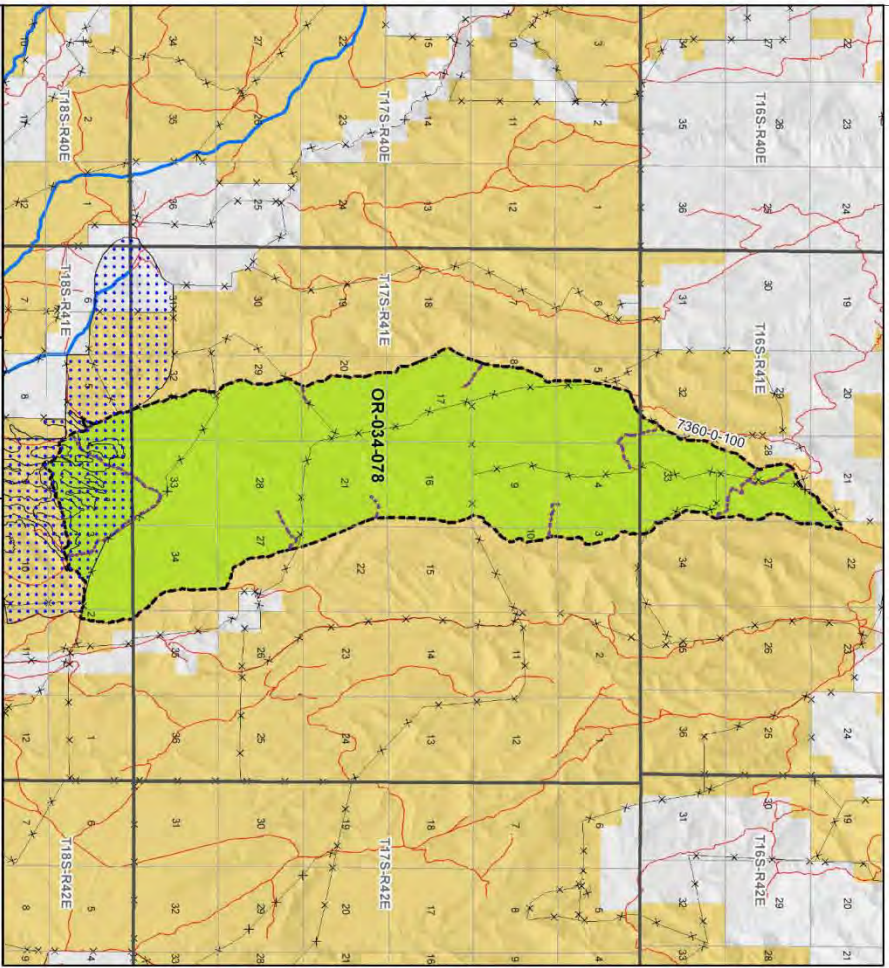
U.S. DEPARTMENT OF THE INTERIOR
BUREAU OF LAND MANAGEMENT

VALE DISTRICT
May 19, 2009

No warranty is made by the Bureau of Land Management as to the accuracy, reliability, or completeness of these data for individual or aggregate use with other data. Original data were compiled from various sources. This information may not meet National Map Accuracy Standards. This product was developed through digital means and may be updated without notification.

--FINAL--
10 of 11

Wilderness Characteristics - Land Treatments
Buckbrush Creek - OR-034-078 - Map 2 of 2



Legend

- Land Treatment
 - Blue hatched: -all other values-
 - Green: BLM Wild Char Inventory Unit
 - Yellow: Wilderness Study Area
 - Light Green: Minimal Medical Site
 - Light Blue: Roadlessly Project/Map
 - Light Purple: Major Water Body
 - Light Orange: Bureau of Land Management
 - Light Yellow: Private
 - Light Green: State
 - Light Blue: Other Federal Land
- Route Types - BLM Determination
 - Black dashed: Boundary Road
 - Red dashed: Abandoned Private Trail (APT)
 - Red solid: Discontinued Line
 - Blue solid: County
 - Blue solid: Major Highway
 - Red solid: BLM Wilderness & Other Routes
- Land Ownership
 - Blue hatched: Bureau of Land Management
 - Light Yellow: Private
 - Light Green: State
 - Light Blue: Other Federal Land

U.S. DEPARTMENT OF THE INTERIOR
 BUREAU OF LAND MANAGEMENT

VALE DISTRICT
 May 19, 2009

0 0.408 1.6 Kilometers
 0 0.375 1.5 Miles

Malheur RA
 John Day RA

Map prepared by the Bureau of Land Management
 under the supervision of the District Ranger, Vale District
 and the Wilderness Management Specialist. The content
 of this map is not to be construed as an official BLM
 position, policy, or procedure. It is not to be
 distributed outside the agency.

--FINAL--

Wilderness Characteristics - Land Treatments
Buckbrush Creek - OR-034-078 - Map 2 of 2

OBJECTID*	NAME	TREATMENT TYPE	SEED GROUP	DATE
63	BUCKBRUSH SEEDING	Brus hbeat	Not Applicable	20050430
70	BUCKBRUSH SEEDING	Brus hbeat	Not Applicable	20050430
71	BUCKBRUSH SEEDING	Brus hbeat	Not Applicable	20050430
72	BUCKBRUSH SEEDING	Brus hbeat	Not Applicable	20050430
73	BUCKBRUSH SEEDING	Brus hbeat	Not Applicable	20050430
74	BUCKBRUSH SEEDING	Brus hbeat	Not Applicable	20050430
75	BUCKBRUSH SEEDING	Brus hbeat	Not Applicable	20050430
76	BUCKBRUSH SEEDING	Brus hbeat	Not Applicable	20050430
78	BUCKBRUSH SEEDING	Drill Seeding	Native Grasses	200510
79	BUCKBRUSH SEEDING	Drill Seeding	Native Grasses	200510
80	BUCKBRUSH SEEDING	Drill Seeding	Native Grasses	200510
81	BUCKBRUSH SEEDING	Drill Seeding	Native Grasses	200510
82	BUCKBRUSH SEEDING	Drill Seeding	Native Grasses	200510
83	BUCKBRUSH SEEDING	Drill Seeding	Native Grasses	200510
84	BUCKBRUSH SEEDING	Drill Seeding	Native Grasses	200510
85	BUCKBRUSH SEEDING	Drill Seeding	Native Grasses	200510
1864	BUCKBRUSH SEEDING	Plow/Disc	Not Applicable	1969
1865	BUCKBRUSH SEEDING	Drill Seeding	Unknown	1969

Note: The Land Treatments represented by navy blue dots on the map to the left are labeled with the treatments' ObjectIDs listed in the first field of the Land Treatments table shown above. Multiple types of treatments may have been applied to the same area. For example, one treatment area may have been plowed and drill seeded - a record is shown in the table for each type of treatment.