

Wilderness Inventory Unit Index of Documents  
**Agency Mountain OR-034-001, 11 total pages**

Page 1: Index Cover Sheet

[Page 2: Form 1 – Documentation of BLM Wilderness Inventory: Findings on Record](#)

[Page 5: Form 2 – Documentation of Current Wilderness Inventory Conditions](#)

[Page 9: Form 2 – Summary of Findings and Conclusion](#)

[Page 10: Wilderness Characteristics Overview–Agency Mountain OR-034-001 Map 1 of 2](#)

[Page 11: Wilderness Characteristics-Land Treatments-Agency Mountain OR-034-001 Map 2 of 2](#)

**Prepared by:**  
**U.S. Department of the Interior**  
**Bureau of Land Management**  
**Vale District Office**  
**100 Oregon Street**  
**Vale, Oregon 97918**



## **H-6300-1-WILDERNESS INVENTORY MAINTENANCE IN BLM OREGON/WASHINGTON**

### **APPENDIX B – INVENTORY AREA EVALUATION**

#### **Evaluation of Current Conditions:**

- 1) Document and review the existing BLM wilderness inventory findings on file, if available, regarding the presence or absence of individual wilderness characteristics, using Form 1, below.
- 2) Consider relevant information regarding current conditions available in the office to identify and describe any changes to the existing information (use interdisciplinary (ID) team knowledge, aerial photographs, field observations, maps, etc.), and document your findings on Form 2, below.

When Citizen Information has been submitted regarding wilderness characteristics, document the submitted materials including: date of Submission; Name of District(s) and Field Office(s) Affected; Type of material Submitted (e.g. narrative, map, photo). Evaluate any submitted citizen information regarding the validity of proposed boundaries of the unit(s), the existence of roads and other boundary features, the size of the unit(s), and the presence or absence of wilderness characteristics based on relevant information available in the office (prior BLM inventories, ID team knowledge, aerial photographs, field observations, maps, etc.)

Conduct field reviews as necessary to verify information and to ascertain current conditions. Reach conclusions on current conditions including boundaries, size of areas and presence or absence of wilderness characteristics. Fully explain the basis for each conclusion on form 2, including any critical differences between BLM and citizen information.

Document your findings regarding current conditions for each inventoried area. Describe how the present conditions are similar to, or have changed from, the conditions documented in the original wilderness inventory. Document your findings on Form 2 for each inventory area. Cite to or attach data considered, including photographs, maps, GIS layers, field trip notes, project files, *etc.*

Year: 2010 Unit Number/Name: OR-034-001 – Agency Mountain

**FORM 1 -- DOCUMENTATION OF BLM WILDERNESS INVENTORY  
FINDINGS ON RECORD**

**1. Is there existing BLM wilderness inventory information on all or part of this area?**

Yes X No        (If yes, and if more than one unit is within the area, list the names of those units.):

**A.) Inventory Source(s) -- (X)** Denotes all applicable BLM Inventory files, printed maps, or published BLM Decision documents with information pertaining to this unit.

**Wilderness Inventories**

- **(X)** 1978 – BLM Wilderness Inventory Unit OR-03-02-34 Agency Mountain; (BLM documents in case files)
- **( )** April 1979 – *Wilderness -- Proposed Initial Inventory – Roadless Areas and Islands Which Clearly Do Not have Wilderness Characteristics, Oregon and Washington*
- **(X)** August 2007 – Vale District wilderness characteristics inventory maintenance for the *North Fork Malheur Geographic Management Area – Range Health Project*. Unit 3-4001, Agency Mountain (BLM documents in case files)

**Wilderness Decision Documents**

- **( )** August 1979 – *Wilderness Review – Initial Inventory, Final Decision on Public Lands Obviously Lacking Wilderness Characteristics and Announcement of Public Lands to be Intensively Inventoried for Wilderness Characteristics, Oregon and Washington* (green document)
- **( )** October 1979 – *Wilderness Review – Intensive Inventory - Oregon, Proposed Decision on the Intensive Wilderness Inventory of Selected Areas* (grey document)
- **( )** March 1980 – *Wilderness Review – Intensive Inventory; Final Decisions on 30 Selected Units in Southeast Oregon and Proposed Decisions on Other Intensively Inventoried Units in Oregon and Washington* (orange document)
- **( )** November 1980 - *Wilderness Inventory – Oregon and Washington, Final Intensive Inventory Decisions* (brown document)
- **( )** November 1981- *Stateline Intensive Wilderness Inventory Final Decision, Oregon, Idaho, Nevada, Utah* (tan document)
- **(X)** August 2007 - BLM Vale District North Fork Malheur Geographic Management Area -- Wilderness Characteristic Inventory Maintenance; Agency Mountain, 3-4001. .

**B.) Inventory Unit Name(s)/Number(s)**

BLM OR-03-02-34 Agency Mountain (1978); 3-4001 Agency Mountain (2007)

**C.) Map Name(s)/Number(s)**

- ( ) Final Decision – Initial Wilderness Inventory Map, August 1979, Oregon
- ( ) Proposed Decision -- Intensive Wilderness Inventory of Selected Areas Map, October 1979, Oregon
- ( ) Intensive Wilderness Inventory Map, March 1980, Oregon
- ( ) Intensive Wilderness Inventory --Final Decisions Map, November 1980, Oregon
- ( ) November, 1981 *Stateline Intensive Wilderness Inventory Final Decision, Oregon, Idaho, Nevada, Utah* (tan document)
- (X) June 2007 -- North Fork Malheur Geographic Management Area, BLM Vale District -- Wilderness Characteristics Inventory Maintenance; Agency Mountain, 3-4001

**D.) BLM District(s)/Field Office(s)**

Vale District / Malheur Resource Area;  
Burns District / Three Fingers Resource Area

**2. BLM Inventory Findings on Record**

(Existing inventory information regarding wilderness characteristics (if more than one BLM inventory unit is associated with the area, list each unit and answer each question individually for each inventory unit):

**Inventory Source:** See above.

<b>Unit#/ Name</b>	<b>Size (historic acres)</b>	<b>Natural Condition? Y/N</b>	<b>Outstanding Solitude? Y/N</b>	<b>Outstanding Primitive &amp; Unconfined Recreation? Y/N</b>	<b>Supplemental Values? Y/N</b>
<b><u>12/1978 Finding:</u></b> OR-03-02-34, Agency Mountain	4,440	*	*	*	*
<b><u>8/1/2007 finding:</u></b> 3-4001, Agency Mountain	4,999	*	*	*	*
<b>TOTAL</b>	(see above)				

\* -- These criteria were not addressed since the unit was determined at the time to not meet any size criteria.

## **H-6300-1-WILDERNESS INVENTORY MAINTENANCE IN BLM OREGON/WASHINGTON**

### **APPENDIX B – INVENTORY AREA EVALUATION**

#### **Evaluation of Current Conditions:**

- 1) Document and review the existing BLM wilderness inventory findings on file, if available, regarding the presence or absence of individual wilderness characteristics, using Form 1, below.
- 2) Consider relevant information regarding current conditions available in the office to identify and describe any changes to the existing information (use interdisciplinary (ID) team knowledge, aerial photographs, field observations, maps, etc.), and document your findings on Form 2, below.

When Citizen Information has been submitted regarding wilderness characteristics, document the submitted materials including: date of Submission; Name of District(s) and Field Office(s) Affected; Type of material Submitted (e.g. narrative, map, and photos). Evaluate any submitted citizen information regarding the validity of proposed boundaries of the unit(s), the existence of roads and other boundary features, the size of the unit(s), and the presence or absence of wilderness characteristics based on relevant information available in the office (prior BLM inventories, ID team knowledge, aerial photographs, field observations, maps, etc.)

Conduct field reviews as necessary to verify information and to ascertain current conditions. Reach conclusions on current conditions including boundaries, size of areas and presence or absence of wilderness characteristics. Fully explain the basis for each conclusion on form 2, including any critical differences between BLM and citizen information.

Document your findings regarding current conditions for each inventoried area. Describe how the present conditions are similar to, or have changed from, the conditions documented in the original wilderness inventory. Document your findings on Form 2 for each inventory area. Cite to or attach data considered, including photographs, maps, GIS layers, field trip notes, project files, *etc.*

## **FORM 2 -- DOCUMENTATION OF CURRENT WILDERNESS INVENTORY CONDITIONS**

**Unit Number/Name:** OR-034-001 – Agency Mountain

**Note:** This unit is shared with Burns District. For the 2008-2009 submitted mining Plan of Operations (POO) by Eagle-Picher to Burns District, an initial look at this inventory unit (then identified as the 3-4001 Agency Mountain in the 2007 Vale District wilderness characteristics [WC] inventory maintenance records) by the two districts resulted in the unit retaining the same boundaries, and no further review of the unit was deemed needed at that time. For the current (2010) WC inventory status regarding this unit OR-034-001, see below.

**Description of Current Conditions:** [Include land ownership, location, topography, vegetation features and summary of major human uses/activities.]

### **1. Is the unit of sufficient size?**

Yes \_\_\_\_\_ No  X

**Description:** Refer to this inventory unit's associated Map 1 for its location. Per Vale District's completed 2007 wilderness characteristics (WC) inventory documentation, the 3-4001 WC unit was determined to not meet an applicable minimum size criteria threshold (5,000 acres -- as defined in the federal 1964 Wilderness Act) by one acre. That WC unit included within its boundaries – but abutting the unit's described road boundary – a portion of a notably larger presently active surface mining development/extraction site of a locatable mineral. The present BLM OR-034-001 WC inventory unit excludes the mineral extraction site, with OR-034-001's boundary being, in part, the present outside edge of extensive surface disturbance of the extraction area.

The result is that the size of the present OR-034-001 inventory unit is 4,960 acres. In conclusion, OR-034-001 does not meet any size criteria for wilderness character. The unit is not sufficient size as to manage for wilderness, as established by other collective findings of this 2008-2010 wilderness characteristics inventory update.

The other boundary features of OR-034-001 are abutting federal Bureau of Reclamation (BOR) land on its east side, County road 542 on its southeast side, BLM road 6266-0-00 and private land on its west and southwest sides and a road traversing public land and abutting private land on its north side. Additionally, there are four private parcel inholdings (three 80 acre parcels and one of 120 acres; total of 360 acres) – predominately centrally located relative to the outer boundary features of the inventory unit – and two cherry-stem roads totaling 1.6 miles. The unit's boundary roads are mechanically maintained as needed to provide for relatively regular and continuous use. The unit's north side boundary road, although not known when last mechanically maintained but in reasonably good condition given the nature of the terrain it traverses,

would be authorized by BLM for mechanical maintenance so to provide for continued through-access/egress from a vehicle route on BOR-administered federal land to the east of the WC unit to the large private land parcel on the unit's west side.

## 2. Is the unit in a natural condition?

Yes   X              No                       N/A           

**Description:** For informational purposes, given that OR-034-001 is only slightly less in acreage for meeting size criteria for wilderness characteristics, the following is provided.

Elevations of the unit range approximately from 3,460 feet to 5,040 feet. The north-south oriented ridge system of Agency Mountain runs through the majority of the eastern approximate third of the inventory unit's east-west width. West-facing gradients of the mountain are predominately moderate (steeper in the southern-most reach within the inventory unit); the east-facing gradients and associated short drainages are typically characterized by steeper terrain extending to the unit's west boundary.

Refer to this inventory unit's associated Map 1 and Map 2 for human imprints. They include 8.8 miles of rangeland fence, one developed spring, 2 earthen reservoirs, and approximately 1.5 miles of two motorized primitive trails (MPTs). There is also approximately 1.1 miles of abandoned—yet visually evident – vehicle routes in one location which once served as access associated with locatable mineral exploration activities. There remains no visual contrast to the average visitor of disc-drilled seeding activities conducted in 1961 and 1970 within the inventory unit. The nature and extent of these human imprints and their distribution as associated with the inventory unit, the unit appears to be affected primarily by the forces of nature with the imprint of humans being substantially unnoticeable to the average visitor.

## 3. Does the unit have outstanding opportunities for solitude?

Yes                       No   X              N/A           

**Description:** For informational purposes, given that OR-034-001 is only slightly less in acreage for meeting size criteria for wilderness characteristics, the following is provided.

The unit has an irregular shape. This is due, in part, to the location, number and distribution of the 4 private land inholdings which are boundary features of the unit. Thus, the unit has highly varied dimensions, none which exceeds 1.5 miles in width and no greater than about 4.3 miles long (but narrow – no wider than 0.75 mile before abutting a private inholding or outer boundary feature). This narrow and contorted configuration of the unit -- even when considering the nature of the unit's varied elevations and topography -- possesses few locations where a good –but not outstanding - sense of solitude can be experienced. These circumstances are further hampered by the

unit's southwestern sector's topographical orientation being affected by the clearly unavoidable visual presence and extent of the active mining sites abutting the inventory unit. In conclusion, due to the stated circumstances and the properties associated with the unit and its location, the inventory unit does not provide for outstanding opportunities for solitude.

**4. Does the unit have outstanding opportunities for primitive and unconfined recreation?**

Yes \_\_\_\_\_ No   X   N/A \_\_\_\_\_

**Description:** For informational purposes, given that OR-034-001 is only slightly less in acreage for meeting size criteria for wilderness characteristics, the following is provided.

Dispersed recreation activities include hunting of common game species (primarily deer, elk and chukar) and associated day hiking and general sightseeing. Some of the area is also suitable for horseback riding. The unit possesses no special or unique features which would draw recreating visitors to it. The unit does not have outstanding opportunities for primitive and unconfined recreation.

**5. Does the unit have supplemental values?**

Yes \_\_\_\_\_ No   X   N/A \_\_\_\_\_

**Description:** None known.



### Summary of Findings and Conclusion

**Unit Name and Number:** OR-034-001 – Agency Mountain

**Summary Results of Analysis:**

- 1. Does the area meet any of the size requirements?  Yes  No
- 2. Does the area appear to be natural?  Yes  No
- 3. Does the area offer outstanding opportunities for solitude or a primitive and unconfined type of recreation?  Yes  No  NA
- 4. Does the area have supplemental values?  Yes  No  NA

**Conclusion -- check one:**

- The area, or a portion of the area, has wilderness character.
- The area does not have wilderness character.

**Prepared by:** Robert Alward  
Robert Alward, Wilderness Planner contractor, Vale District

**Team Members:**

<u>Bill Lutjens</u>	12/7/10
Bill Lutjens, Rangeland Management Specialist, Malheur RA, Vale District	Date
<u>Daniel Thomas</u>	12/6/10
Dan Thomas, Range Technician, Malheur RA, Vale District	Date
<u>Gillian Wigglesworth</u>	12/6/10
Gillian Wigglesworth, Botanist, Malheur RA, Vale District	Date
<u>Michelle Caviness</u>	12/6/10
Michelle Caviness, Wildlife Biologist, Malheur RA, Vale District	Date
<u>Eian Ray</u>	12-6-10
Eian Ray, GIS Specialist, contractor, Vale District	Date
<u>Brent Grasty</u>	12/8/10
Brent Grasty, GIS Coordinator, Vale District	Date
<u>Eric Haakenson</u>	12/14/10
Eric Haakenson, Wilderness Specialist, Burns District	Date
<u>Jason Brewer</u>	12/14/10
Jason Brewer, Wildlife Biologist, Three Rivers RA, Burns District	Date
<u>Rachel Beaubien</u>	12/14/10
Rachel Beaubien, Rangeland Management Specialist, Three Rivers RA, Burns District	Date

**Approved by:**

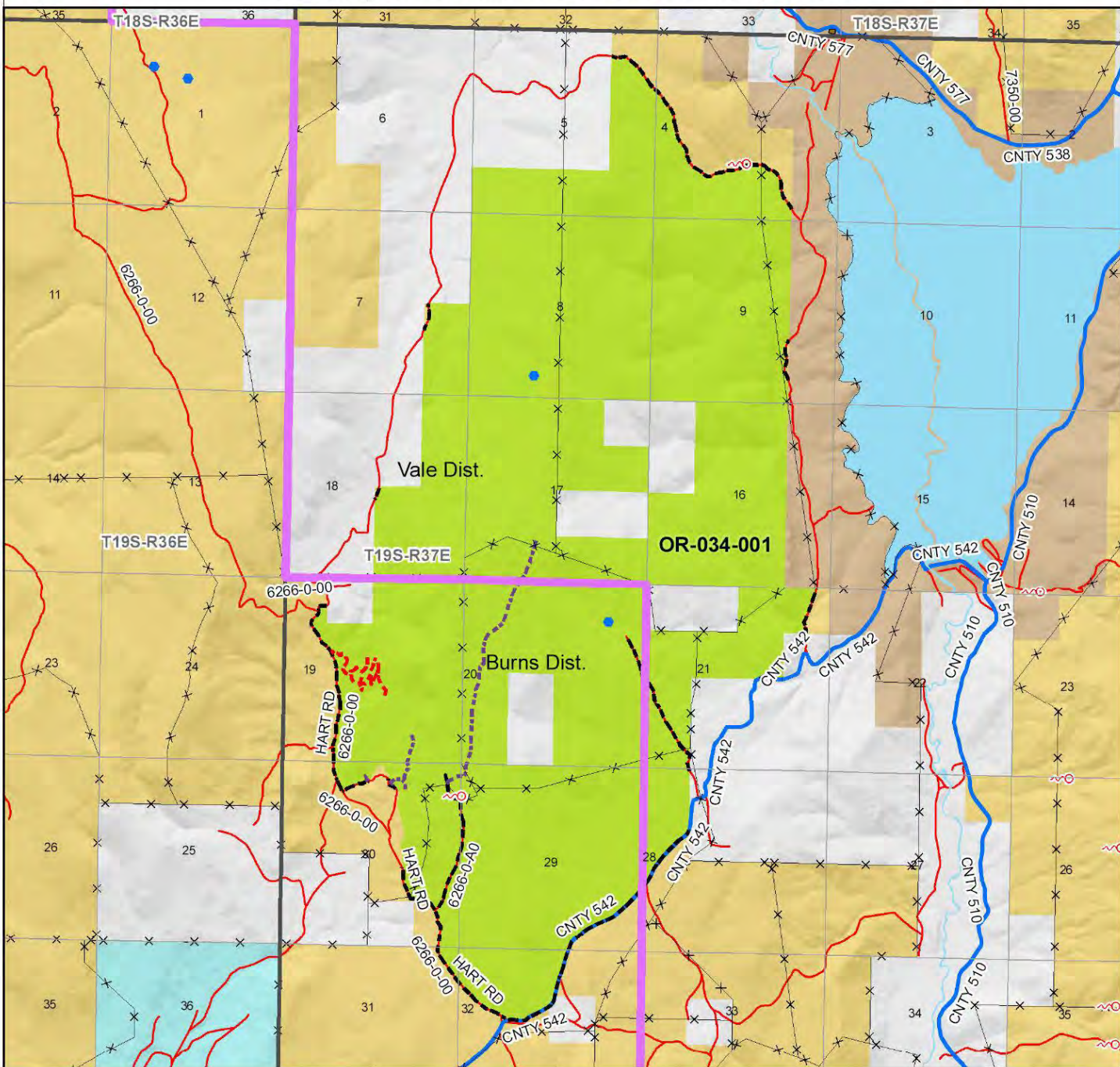
Pat Ryan 12-8-10  
Pat Ryan, Malheur Resource Area Field Manager, Vale District Date

Rick Roy 12/14/10  
Rick Roy, Three Rivers Resource Area Field Manager, Burns District Date

*This form documents information that constitutes an inventory finding on wilderness characteristics. It does not represent a formal land use allocation or a final agency decision subject to administrative remedies under either 43 CFR parts 4 or 1610.5-2.*

# Wilderness Characteristics - Overview

## Agency Mountain - OR-034-001 - Map 1 of 2



**Legend**

- Developed Spring
- Wildlife Guzzler
- Earthen Reservoir
- Pipeline
- Trough
- Fence
- Storage Tank
- Surface Mining Disturbance
- Sage Grouse Lek
- Special Status Plant
- BLM Wild Char Inventory Unit
- Wilderness Study Area
- Mineral Material Site
- Road/Utility Right-of-Way
- Major Water Body

**Route Types - BLM Determination**

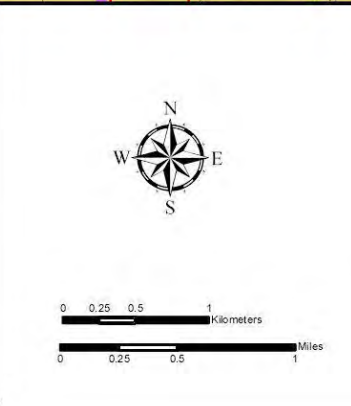
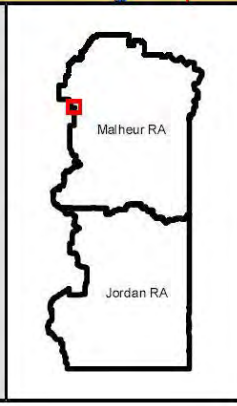
- Boundary Road
- Motorized Primitive Trail (MPT)
- Discontinued Use

**Routes - Outside Wild Char Unit**

- County
- Major Highway
- BLM Numbered & Other Routes

**Land Ownership**

- Bureau of Land Management
- State
- Private
- Other Federal Land



**U.S. DEPARTMENT OF THE INTERIOR**  
BUREAU OF LAND MANAGEMENT

**VALE DISTRICT**  
August 9, 2010

No warranty is made by the Bureau of Land Management as to the accuracy, reliability, or completeness of these data for individual or aggregate use with other data. Original data were compiled from various sources. This information may not meet National Map Accuracy Standards. This product was developed through digital means and may be updated without notification.

--FINAL--

