

Louse Canyon Wilderness Inventory Unit Index of Documents
Rawhide OR-036-012, 12 total pages

Page 1: Index Cover Sheet

Page 2: Louse Canyon GMA – BLM Wilderness Inventory Units – Map

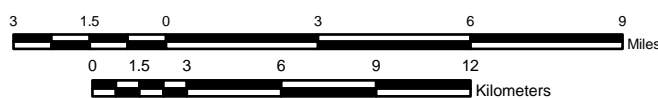
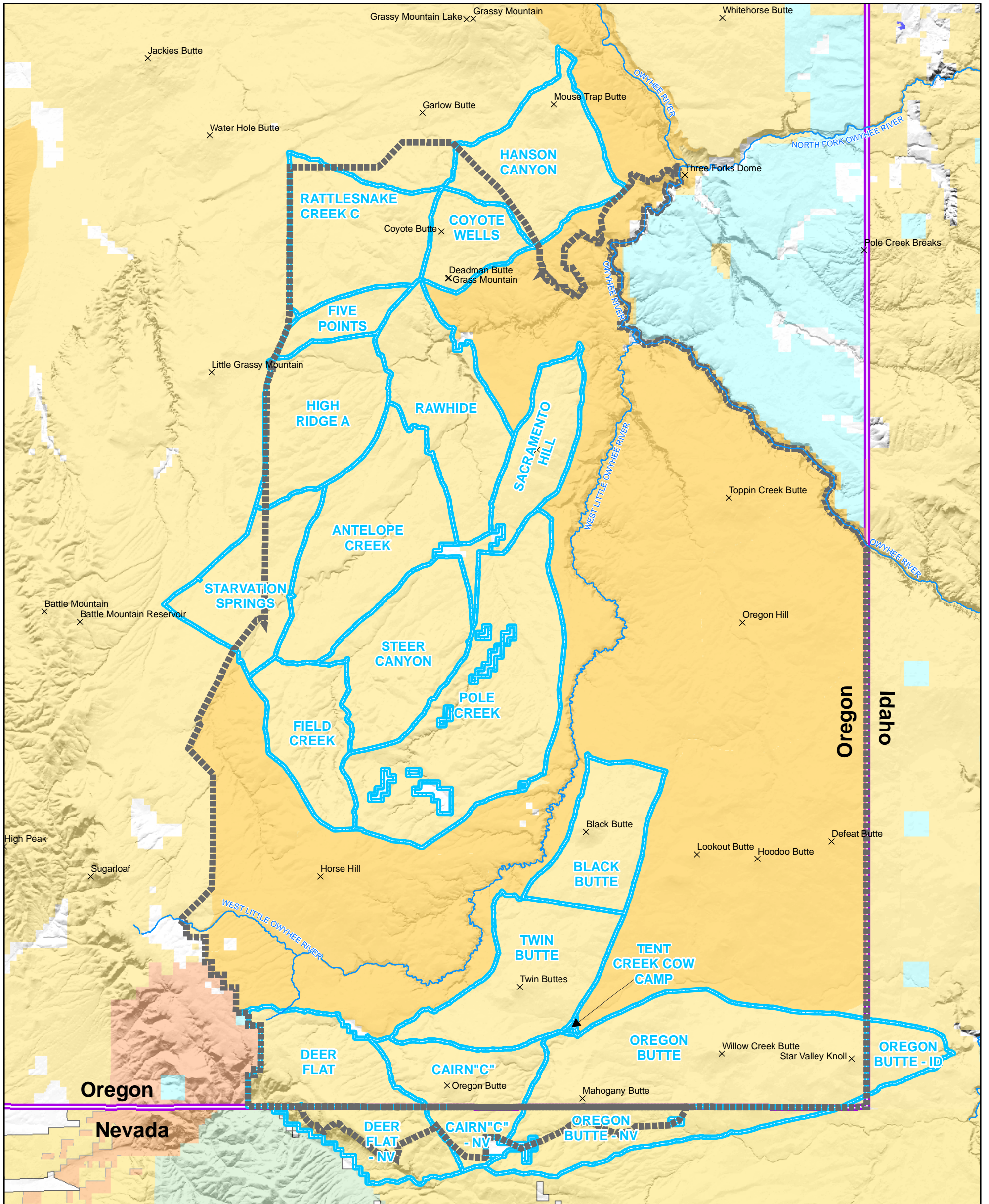
Page 3: Louse Canyon GMA – Oregon Natural Desert Association Proposed Wilderness Study Areas

Pages 4-10: H-6300-1-Wilderness Inventory Maintenance in BLM Oregon/Washington Appendix B – Inventory Area Evaluation

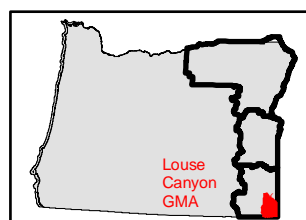
Page 11: Rawhide Unit Wilderness Boundaries – Map

Page 12: Rawhide Unit with Projects – Map

Louse Canyon GMA - BLM Wilderness Inventory Units



1:240,000



U.S. DEPARTMENT OF THE INTERIOR
BUREAU OF LAND MANAGEMENT



VALE DISTRICT

Louse Canyon
Geographic Management Area
Wilderness Inventory Maintenance

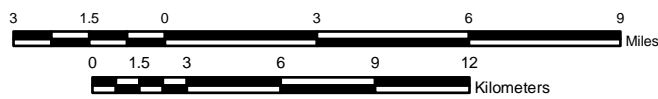
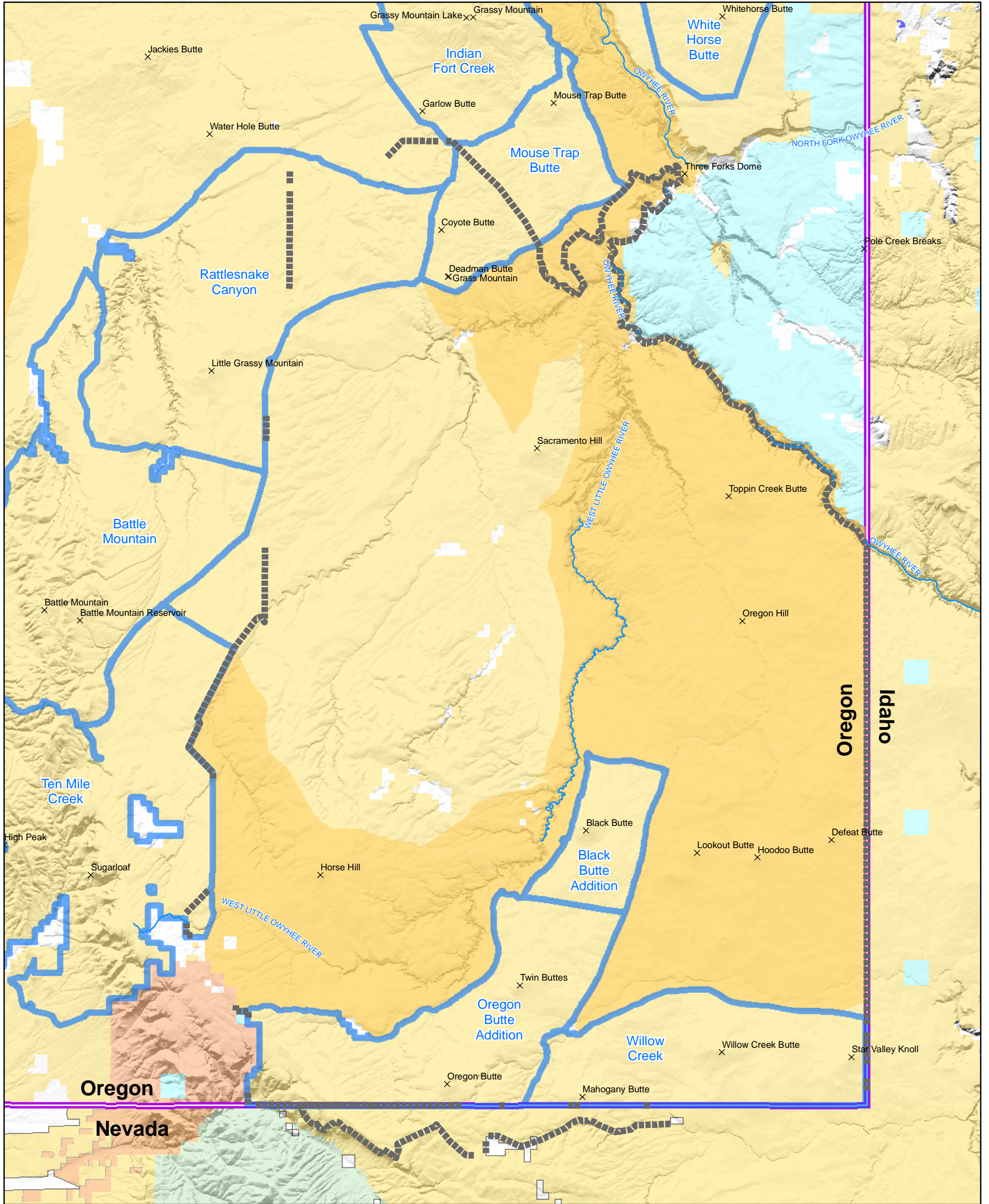
October 26, 2007

No warranty is made by the Bureau of Land Management as to the accuracy, reliability, or completeness of these data for individual or aggregate use with other data. Original data were compiled from various sources. This information may not meet National Map Accuracy Standards. This product was developed through digital means and may be updated without notification.

- Legend**
- Louse Canyon GMA Boundary
 - Resource Area Boundary
 - Wilderness Inventory Unit
 - Wilderness Study Areas

- Land Status**
- Bureau of Land Management
 - Forest Service
 - Bureau of Indian Affairs
 - Other Federal Lands
 - Private
 - State

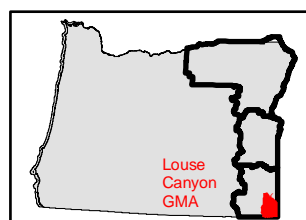
Louse Canyon GMA - Oregon Natural Desert Association Proposed Wilderness Study Areas



1:240,000

- Legend**
- Louse Canyon GMA Boundary
 - Resource Area Boundary
 - ONDA Units
 - Wilderness Study Areas

- Land Status**
- Bureau of Land Management
 - Forest Service
 - Bureau of Indian Affairs
 - Other Federal Lands
 - Private
 - State



U.S. DEPARTMENT OF THE INTERIOR
BUREAU OF LAND MANAGEMENT



VALE DISTRICT

Louse Canyon
Geographic Management Area
Wilderness Inventory Maintenance

October 26, 2007

No warranty is made by the Bureau of Land Management as to the accuracy, reliability, or completeness of these data for individual or aggregate use with other data. Original data were compiled from various sources. This information may not meet National Map Accuracy Standards. This product was developed through digital means and may be updated without notification.

**H-6300-1-WILDERNESS INVENTORY MAINTENANCE
IN BLM OREGON/WASHINGTON**

APPENDIX B – INVENTORY AREA EVALUATION

Year: 2007

Inventory Unit Name/Number: Rawhide OR-036-012

FORM 1

DOCUMENTATION OF BLM WILDERNESS INVENTORY FINDINGS ON RECORD:

1) Is there existing BLM wilderness inventory information on all or part of this area?

Yes X No

A.) Inventory Source(s)

(X) Denotes all applicable BLM inventory files, printed maps, or published BLM Decision documents with information pertaining to this unit.

Wilderness Inventories

- (X) 1978 - *BLM Wilderness Inventory Units OR-03-13-19* (unpublished BLM documents stored in 6-way case files).
- (X) April 1979 - *Proposed Initial Inventory: Roadless Areas and Islands Which Do Not Have Wilderness Characteristics* (yellow book).

Wilderness Decision Documents

- (X) August 1979 - *Wilderness Review – Initial Inventory: Final Decision on Public Lands Obviously Lacking Wilderness Characteristics, Oregon and Washington* (green book).
- () October 1979 - *Wilderness Review – Intensive Inventory: Oregon, Proposed Decision on the Intensive Wilderness Inventory of Selected Areas* (grey book).
- (X) March 1980 - *Wilderness Review – Intensive Inventory: Final Decisions on 30 Selected Units in Southeast Oregon and Proposed Decisions on Other Intensively Inventoried Units in Oregon and Washington* (orange book).
- (X) November 1980 - *Wilderness Inventory – Oregon and Washington, Final Intensive Inventory Decisions* (brown book).
- () November 1981 - *Stateline Intensive Wilderness Inventory Final Decision, Oregon, Idaho, Nevada, Utah* (tan pamphlet).

B.) Inventory Unit Name(s)/Number(s)

- BLM unpublished file OR-03-13-19 (1978); Rawhide 3-179 (November 1980 - *Wilderness Inventory – Oregon and Washington, Final Intensive Inventory Decisions* [brown book]).

C.) Map Name(s)/Number(s)

- Final Decision – Initial Wilderness Inventory Map August 1979
- Proposed Decision Intensive Wilderness Inventory of Selected Areas Map October 1979
- Intensive Wilderness Inventory Map March 1980
- Intensive Wilderness Inventory, Final Decisions Map November 1980
- November 1981 *Stateline Intensive Wilderness Inventory Final Decision, Oregon, Idaho, Nevada, Utah* (tan pamphlet)

D.) BLM District(s)/Field Office(s)

- Vale District/Jordan Resource Area

2) BLM Inventory Findings on Record:

Unit#/Name	Size (acres)	Natural Condition	Outstanding Solitude	Outstanding Primitive & Unconfined Recreation	Supplemental Values
Rawhide 3-179	18,913	N	N	N	N
Total acres >>	18,913				

FORM 2

DOCUMENTATION OF CURRENT WILDERNESS INVENTORY CONDITIONS:

Inventory Unit Name/Number: Rawhide OR-036-012

For this exercise BLM refers to the unit as 2007 Rawhide OR-036-012.

1) Is the unit of sufficient size?

Yes X No

The unit is comprised of 17,846 acres, meeting the size criteria.

Description:

The unit is bounded by BLM road 6355-0-A0 on the south, west, and northwest side, BLM road 6357-0-00 on the north side, and BLM road 8300-6-04 on the northeast and southeast side, which is also the southwest boundary of the Owyhee Canyon WSA. Periodic maintenance of the 26.5 miles of boundary roads has occurred in the recent past (no confirmed dates available) and they are used regularly by ranchers (as observed by current BLM staff) and by the BLM for livestock management. Refer to map 2007_Rawhide_OR_036_012.pdf for the unit boundary.

2) Is the unit in a natural condition?

Yes No X

Description:

Human imprints within the unit include five earthen reservoirs, 10.95 miles of motorized primitive trails, 14.95 miles of fenceline which includes 2.4 miles constructed in 2006, one 10,000-gallon water storage tank, 0.8 miles of stockwater pipelines, five livestock watering troughs, one cow camp, one watering pit, an inactive airstrip, a 2,720-acre crested wheatgrass seeding, and a 1,600-acre burn. Individually the intrusions do not appear to be noticeable because of their small size and the screening provided by the rolling hills. However, the cumulative effect of the intrusions becomes substantially noticeable because of their proximity to one another. A user moving through the unit would see many of them. The unit appears to be primarily affected by the influences of man. Refer to map 2007_Rawhide_OR_036_012A.pdf for human imprints.

3) Does the unit have outstanding opportunities for solitude?

Yes No X

Description:

Unit OR-036-012 is approximately 10.5 miles in length and 3.75 miles in width at the central portion then tapers to about 1.5 miles wide at the northern and southern boundaries. The majority of the unit consists of a flat, open sagebrush plateau dissected by three major drainages. The main variation of topographic relief within the unit occurs in Big Antelope Creek, Little Antelope Creek, and Pole Creek drainages. Big Antelope Creek, an interrupted perennial stream, and intermittent flowing Pole Creek drain toward the north while the intermittent eastward flowing Little Antelope Creek enjoins Big Antelope Creek near the eastern boundary of the unit. Each of the creeks is entrenched within deep canyons or depressions, contain uniform gentle gradients, and are rimmed by broad, open sagebrush flat plateaus. Canyons associated with Big Antelope and Little Antelope Creeks range from 300-350 feet in depth while Pole Creek is contained within an incised depression that is about 50 feet deep near the confluence with Big Antelope

Creek and diminishes upstream to about 20 feet in depth. Topographic relief is minimal within the unit with elevations ranging from about 4,900 feet mean sea level (msl) and rising to about 5,100 feet (msl). Elevation changes are gradual in most of the unit traversing from north to south or from east to west and average about 10-20 feet per mile. The unit provides limited vegetative screening, consisting of broad expanses of low and big sagebrush with little opportunity for solitude. Because of the existing 11-mile network of motorized primitive trails, the absence of vegetative or topographic screening, and the relatively short expanses of canyons, BLM unit OR-036-012 does not provide outstanding opportunities for solitude.

4) Does the unit have outstanding opportunities for primitive and unconfined recreation?

Yes No

Description:

Opportunities for primitive and unconfined types of recreation are available in the unit. However, opportunities for activities such as hiking, backpacking, hunting, wildlife viewing, horseback riding, and photography are not outstanding because the unit lacks scenic quality, diversity of landforms, and challenging terrain. Big Antelope Creek, Little Antelope Creek and Pole Creek are the only topographic features in the unit that alter the flatness of the terrain. The present inventory agrees with the 1978 inventory that determined the unit lacks exceptional scenery and a diversity of landforms that would result in a strong attraction to the unit for any type of primitive recreation activity. Backpacking across the unit could be a monotonous experience with no change in hiking conditions or scenery except for a few miles of canyons 300-350 feet deep associated with Big and Little Antelope Creeks. There are only limited unique photographic opportunities in the unit, again associated with the stream canyons. Despite the unit's size, the lack of scenic quality and lack of diversity of landforms render the opportunities for primitive and unconfined recreation less than outstanding. Although wildlife viewing opportunities have been identified as a recreational value within this unit, they are not considered to be outstanding by the inventory team.

5) Does the unit have supplemental values?

Yes No

Description:

With some minor exceptions, the ecological integrity of rangeland in this unit has been largely unaffected by the combined impacts of wildfire and invasive, non-native plants such as cheatgrass. This means the area possesses wildlife habitat supplemental values for sagebrush-dependent species of BLM management importance including pygmy rabbit, sagebrush vole, greater sage-grouse, Brewer's sparrow, black-throated sparrow, sage sparrow, loggerhead shrike, and sage thrasher. Observed rangeland conditions within this unit can be expected to contribute towards the existence of healthy sagebrush-dependent wildlife populations for a large area and over the long term because: (1) native plant functional and structural groups are well represented within the unit, and (2) wildlife forage, cover, and structure is available for use by species of management importance.

In contrast to conditions described above, rangeland at similar elevations and in similar ecological sites within Malheur County, Oregon has been highly disturbed due to the combined effects of improper historical grazing use, loss of biological crust integrity, invasive plant establishment, and catastrophic wildfire impacts over the last few decades. Cheatgrass presence is known to accelerate and aggravate wildfire spread because it is a highly flammable fine fuel, and wildfire often reduces or completely eliminates critical shrub-based forage, cover, and habitat structure values for many species of wildlife. Literally millions of acres of Wyoming big sagebrush habitat

types, similar to those within this unit, have been burned over the last few decades and recovery of these losses will take multiple decades if not centuries to occur.

Finally, the land considered within this unit is also recognized as part of the Owyhee Uplands Physiographic Province, a region incorporating rangeland in Oregon, Idaho, and Nevada which supports some of the largest contiguous blocks of intact sagebrush steppe remaining west of the Continental Divide.

SUMMARY OF FINDINGS AND CONCLUSION:

Inventory Unit Name/Number: 2007 Rawhide OR-036-012

Summary

Results of Analysis:

- | | | | |
|---|-------|------|----|
| 1) Does the area meet any of the size requirements? | [Yes] | No | |
| 2) Does the area appear to be natural? | Yes | [No] | |
| 3) Does the area offer outstanding opportunities for solitude or a primitive and unconfined type of recreation? | Yes | [No] | NA |
| 4) Does the area have supplemental values? | [Yes] | No | NA |

Conclusion

Check One:

- The area, or a portion of the area, has wilderness character.
- The area does not have wilderness character.


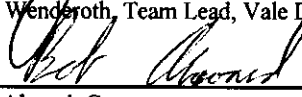
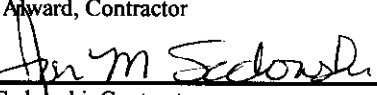
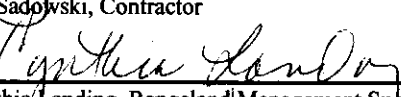
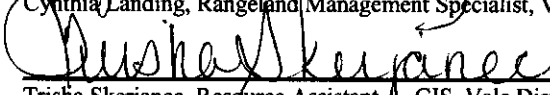
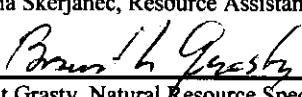
The ID team has reviewed the findings summarized in the original Statewide Wilderness Inventory as well as in the published decision documents and maps identified on Form 1. Current conditions relative to the presence or absence of wilderness characteristics have been considered, including citizen wilderness proposals (no citizen proposal covering this unit). Based on all the best available information and staff field visits to the area since 2000, the ID team has found no compelling reasons to change existing BLM decisions about wilderness characteristics. While BLM finds that there are supplemental values present, the naturalness of the area, the opportunities for solitude, and primitive and unconfined recreation are limited for reasons already described.

Sources of Reference for Evaluation:

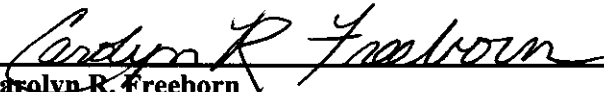
- All BLM documents listed in Form 1; existing BLM wilderness inventory information.
- Wilderness Inventory Recommendations: Vale District, Submitted by Oregon Natural Desert Association (ONDA), February 6, 2004.
- Current geographic information system (GIS) data on existing projects, vehicle routes/roads, land ownership, etc.
- BLM Job Documentation Record (JDR) files.
- National Agriculture Imagery Project digital images (2005).
- Official BLM Transportation Plan Map.
- BLM staff has obtained first-hand field knowledge about this unit's plant communities, road conditions, and other attributes as a result of rangeland health investigations conducted between July and October of the year 2000. BLM gathered quantitative rangeland data from trend plots in support of the assessment and evaluation process for Louse Canyon Geographic Management Area, but most other data collected for rangeland health evaluation purposes were either estimated or qualitative in nature. BLM staff has also visited this and adjoining units annually and on multiple occasions after 2000 in the process of establishing and reading

riparian monitoring locations, performing layout and design work for rangeland development projects, conducting rangeland supervision duties, collecting livestock utilization data, and documenting current road conditions. Field observations were made during Rangeland Standards and Guides assessment work in 2000.

Wilderness Characteristics Interdisciplinary Team:

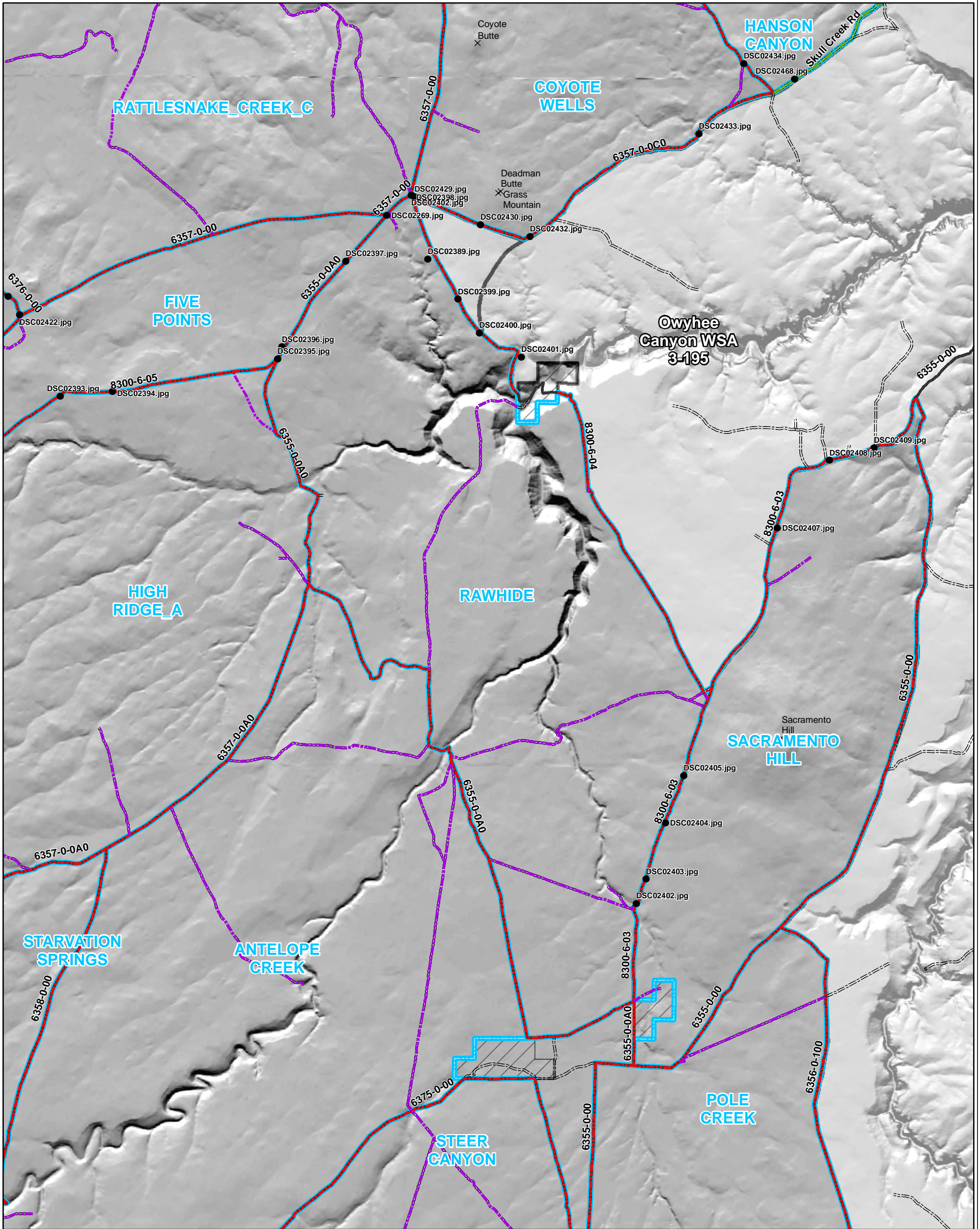
	<u>10/26/07</u>
Jack Wenderoth, Team Lead, Vale District	Date
	<u>10/26/07</u>
Bob Adward, Contractor	Date
	<u>10/26/07</u>
Jon Sadowski, Contractor	Date
	<u>10-26-07</u>
Cynthia Landing, Rangeland Management Specialist, Vale District	Date
	<u>10/26/07</u>
Trisha Skerjanec, Resource Assistant - GIS, Vale District	Date
	<u>10/26/07</u>
Brent Grasty, Natural Resource Specialist - GIS, Vale District	Date

Concurrence:

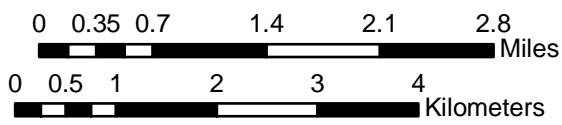
	<u>10/26/07</u>
Carolyn R. Freeborn	Date
Field Manager, Jordan R. A.	

This form documents information that constitutes an inventory finding on wilderness characteristics. It does not represent a formal land use allocation or a final agency decision subject to administrative remedies under either 43 CFR parts 4 or 1610.5-2.

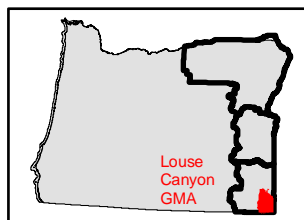
RAWHIDE
OR-036-012
ACRES: 17847



- Legend**
- DSC022291.jpg Photo Points
 - Boundary Road
 - WSA Shared Bnd
 - Primitive Route
 - ▭ Wilderness Inventory Unit
- Land Status**
- ▨ Private
 - ▨ Bureau of Land Management
 - ▭ Wilderness Study Area



1:75,000



U.S. DEPARTMENT OF THE INTERIOR
BUREAU OF LAND MANAGEMENT



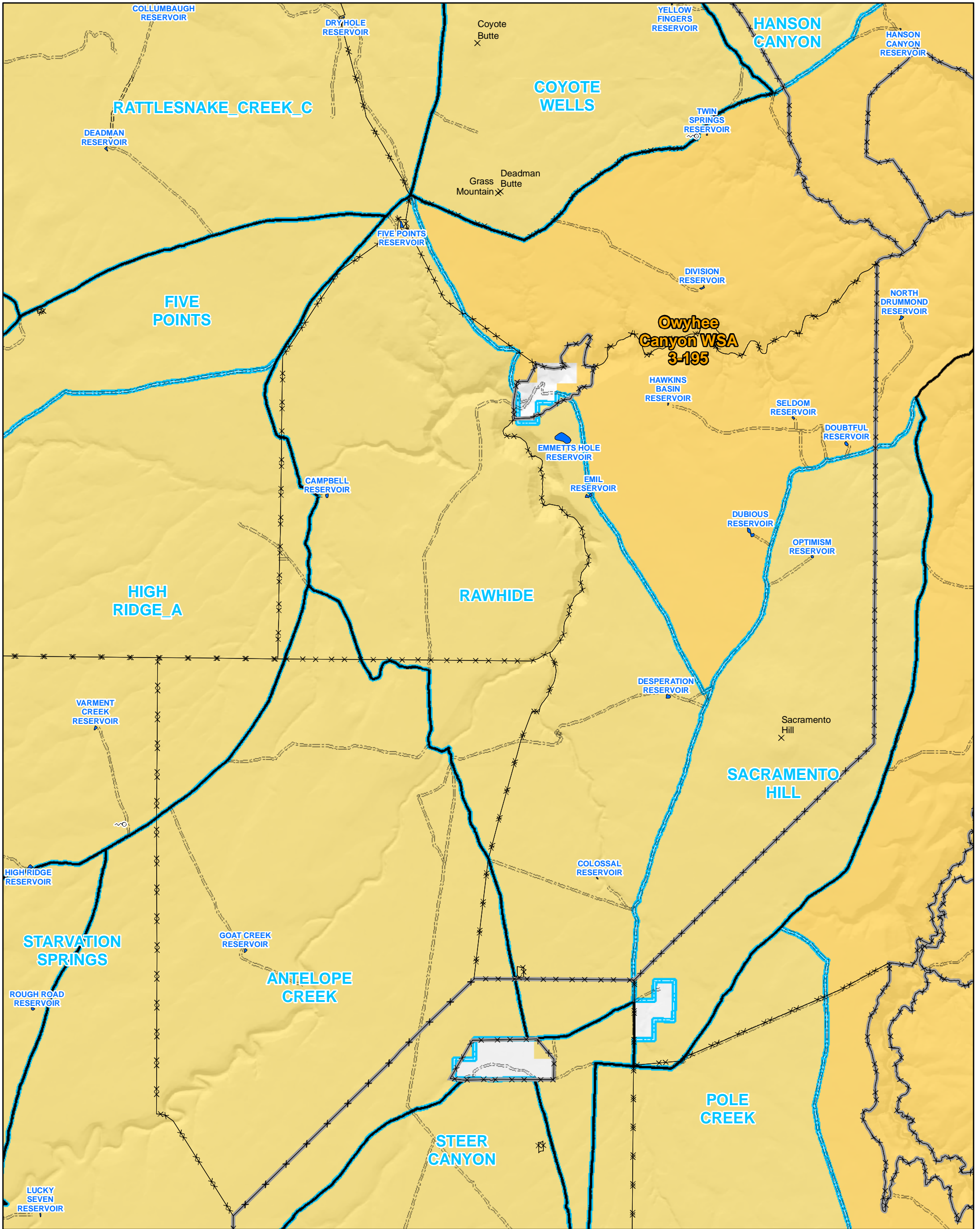
VALE DISTRICT

Louse Canyon
 Geographic Management Area
 Wilderness Inventory Maintenance

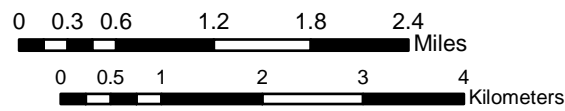
October 26, 2007

No warranty is made by the Bureau of Land Management as to the accuracy, reliability, or completeness of these data for individual or aggregate use with other data. Original data were compiled from various sources. This information may not meet National Map Accuracy Standards. This product was developed through digital means and may be updated without notification.

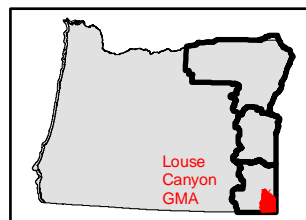
RAWHIDE
 OR-036-012
 ACRES: 17847



- Legend**
- Wilderness Inventory Unit
 - Wilderness Study Areas
 - BLM Inventory Routes
 - Other Routes
 - Allotments
 - Pasture Boundaries
 - BLM Reservoirs
 - BLM Developed Springs
 - Other Springs
- Land Status**
- Bureau of Land Management
 - Forest Service
 - Bureau of Indian Affairs
 - Other Federal Lands
 - Private
 - State



1:75,000



U.S. DEPARTMENT OF THE INTERIOR
 BUREAU OF LAND MANAGEMENT



VALE DISTRICT

Louse Canyon
 Geographic Management Area
 Wilderness Inventory Maintenance

October 26, 2007

No warranty is made by the Bureau of Land Management as to the accuracy, reliability, or completeness of these data for individual or aggregate use with other data. Original data were compiled from various sources. This information may not meet National Map Accuracy Standards. This product was developed through digital means and may be updated without notification.