

Louse Canyon Wilderness Inventory Unit Index of Documents
Hanson Canyon OR-036-016, 55 total pages

Page 1: Index Cover Sheet

Page 2: Louse Canyon GMA – BLM Wilderness Inventory Units – Map

Page 3: Louse Canyon GMA – Oregon Natural Desert Association Proposed Wilderness Study Areas

Pages 4-11: H-6300-1-Wilderness Inventory Maintenance in BLM Oregon/Washington Appendix B – Inventory Area Evaluation

Page 12: Hanson Canyon Unit Wilderness Boundaries – Map

Page 13: Hanson Canyon Unit with Projects – Map

Pages 14-17: H-6300-1-Wilderness Inventory Maintenance in BLM Oregon/Washington Appendix C – Road Analysis for Hanson Canyon OR-036-016, BLM, Deadman Pass/6372-0-00; Mouse Trap Butte Proposed WSA Addition TF17d

Pages 18-27: H-6300-1-Wilderness Inventory Maintenance in BLM Oregon/Washington Appendix D – Photo Log and Photos for Inventory Areas: Hanson Canyon OR-036-016 and Deadman Pass 6372-0-00

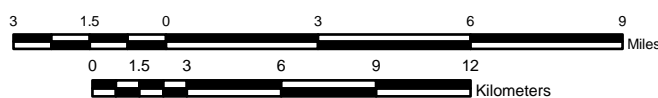
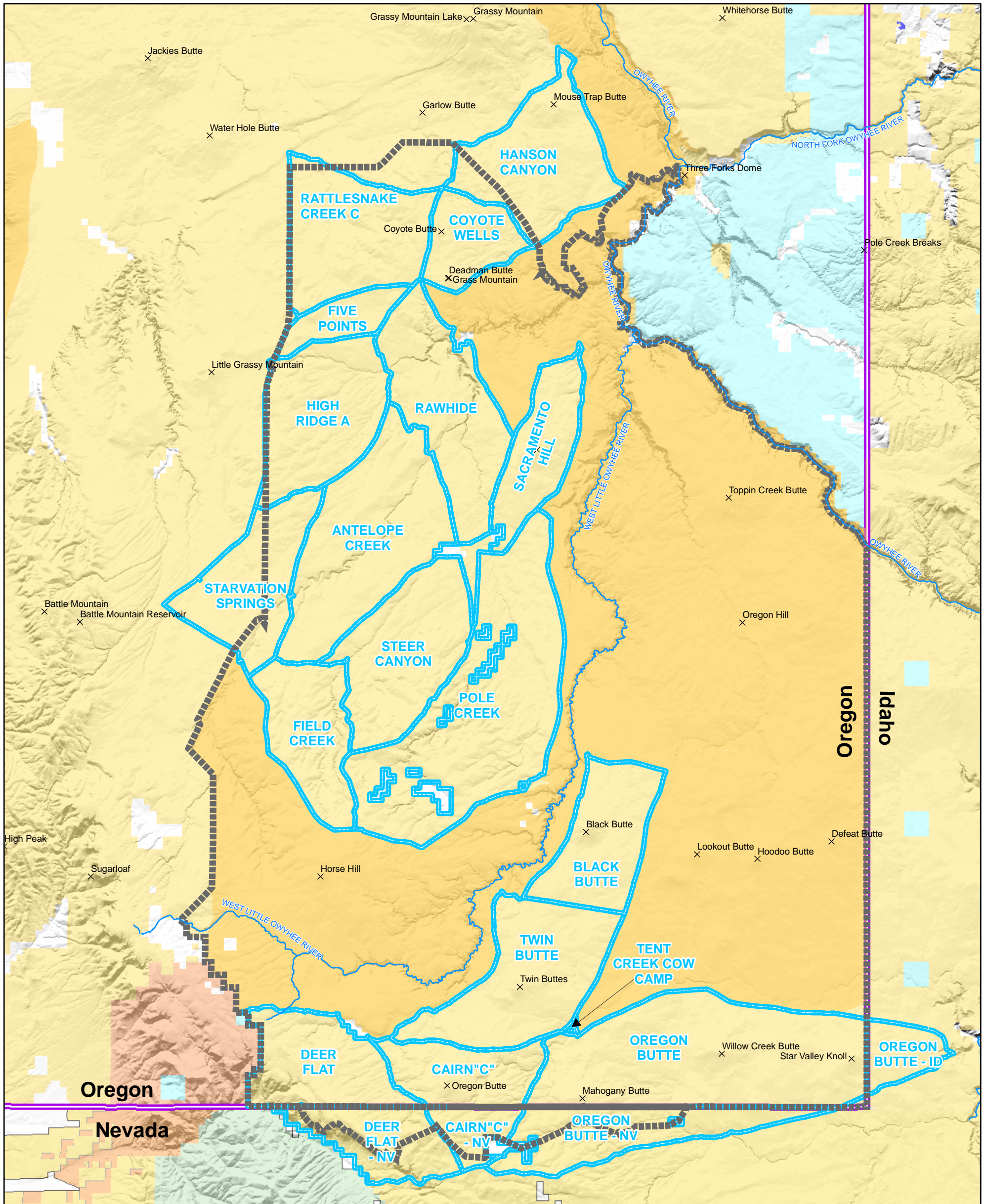
Pages 28-33: H-6300-1-Wilderness Inventory Maintenance in BLM Oregon/Washington Appendix C – Road Analysis for Boundary Road between BLM Coyote Wells OR-036-015, Hanson Canyon OR-036-016 and Owyhee Canyon WSA

Pages 34-39: H-6300-1-Wilderness Inventory Maintenance in BLM Oregon/Washington Appendix D – Photo Log and Photos for Inventory Areas: Hanson Canyon OR-036-016 and Twin Springs Road 6357-0-C0

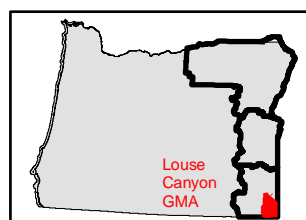
Pages 40-43: H-6300-1-Wilderness Inventory Maintenance in BLM Oregon/Washington Appendix C – Road Analysis for Hanson Canyon OR-036-016 BLM, Skull Creek Road/County Road 522; Mouse Trap Butte proposed WSA Addition TF17a and TF17b

Pages 44-55: H-6300-1-Wilderness Inventory Maintenance in BLM Oregon/Washington Appendix D – Photo Log and Photos for Inventory Areas: Hanson Canyon OR-036-016 Skull Creek Road / County Road 522

Louse Canyon GMA - BLM Wilderness Inventory Units



1:240,000



U.S. DEPARTMENT OF THE INTERIOR
BUREAU OF LAND MANAGEMENT



VALE DISTRICT

Louse Canyon
Geographic Management Area
Wilderness Inventory Maintenance

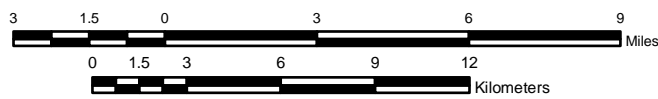
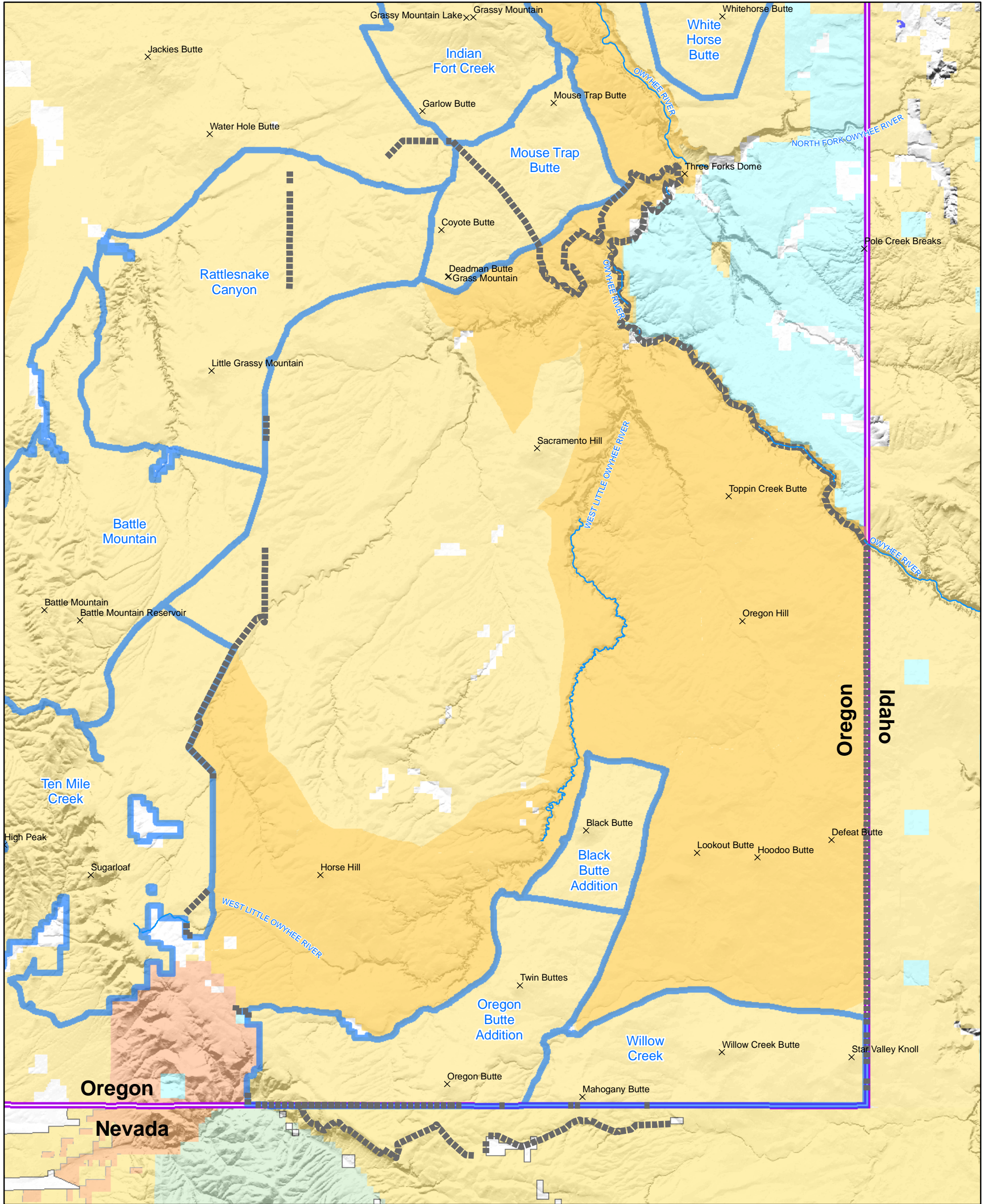
October 26, 2007

No warranty is made by the Bureau of Land Management as to the accuracy, reliability, or completeness of these data for individual or aggregate use with other data. Original data were compiled from various sources. This information may not meet National Map Accuracy Standards. This product was developed through digital means and may be updated without notification.

- Legend**
- Louse Canyon GMA Boundary
 - Resource Area Boundary
 - Wilderness Inventory Unit
 - Wilderness Study Areas

- Land Status**
- Bureau of Land Management
 - Forest Service
 - Bureau of Indian Affairs
 - Other Federal Lands
 - Private
 - State

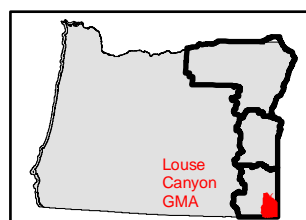
Louse Canyon GMA - Oregon Natural Desert Association Proposed Wilderness Study Areas



1:240,000

- Legend**
- Louse Canyon GMA Boundary
 - Resource Area Boundary
 - ONDA Units
 - Wilderness Study Areas

- Land Status**
- Bureau of Land Management
 - Forest Service
 - Bureau of Indian Affairs
 - Other Federal Lands
 - Private
 - State



U.S. DEPARTMENT OF THE INTERIOR
BUREAU OF LAND MANAGEMENT



VALE DISTRICT

Louse Canyon
Geographic Management Area
Wilderness Inventory Maintenance

October 26, 2007

No warranty is made by the Bureau of Land Management as to the accuracy, reliability, or completeness of these data for individual or aggregate use with other data. Original data were compiled from various sources. This information may not meet National Map Accuracy Standards. This product was developed through digital means and may be updated without notification.

**H-6300-1-WILDERNESS INVENTORY MAINTENANCE
IN BLM OREGON/WASHINGTON**

APPENDIX B – INVENTORY AREA EVALUATION

Year: 2007

Inventory Unit Name/Number: Hanson Canyon OR-036-016

FORM 1

DOCUMENTATION OF BLM WILDERNESS INVENTORY FINDINGS ON RECORD:

1) **Is there existing BLM wilderness inventory information on all or part of this area?**

Yes X No ___

A.) Inventory Source(s)

(X) Denotes all applicable BLM inventory files, printed maps, or published BLM Decision documents with information pertaining to this unit.

Wilderness Inventories

- (X) 1978 - *BLM Wilderness Inventory Units OR-03-11-12* (unpublished BLM documents stored in 6-way case files).
- (X) April 1979 - *Proposed Initial Inventory – Roadless Areas and Islands Which Do Not Have Wilderness Characteristics* (yellow book).

Wilderness Decision Documents

- (X) August 1979 - *Wilderness Review – Initial Inventory: Final Decision on Public Lands Obviously Lacking Wilderness Characteristics, Oregon and Washington* (green book).
- () October 1979 - *Wilderness Review – Intensive Inventory: Oregon, Proposed Decision on the Intensive Wilderness Inventory of Selected Areas* (grey book).
- (X) March 1980 - *Wilderness Review – Intensive Inventory: Final Decisions on 30 Selected Units in Southeast Oregon and Proposed Decisions on Other Intensively Inventoried Units in Oregon and Washington* (orange book).
- (X) November 1980 - *Wilderness Inventory – Oregon and Washington, Final Intensive Inventory Decisions* (brown book).
- (X) November 1981 - *Stateline Intensive Wilderness Inventory Final Decision, Oregon, Idaho, Nevada, Utah* (tan pamphlet).

B.) Inventory Unit Name(s)/Number(s)

- BLM unpublished file OR-03-11-01, OR-03-11-12 (1978); Owyhee River 3-143, Hanson Canyon 3-149 (*August 1979 - Wilderness Review – Initial Inventory, Final Decisions on Public Lands Obviously Lacking Characteristics, Oregon and Washington* [green book]); Owyhee River 3-143A, Hanson Canyon 3-149 (March 1980 – *Wilderness Review –*

Intensive Inventory; Final Decisions on 30 Selected Units in Southeast Oregon and Proposed Decisions on Other Intensively Inventoried Units in Oregon and Washington [orange book]; Owyhee River Canyon 3-195 (November 1981 Stateline Intensive Wilderness Inventory Final Decision, Oregon, Idaho, Nevada, Utah [tan pamphlet]).

C.) Map Name(s)/Number(s)

- (X) Final Decision – Initial Wilderness Inventory Map August 1979
- () Proposed Decision Intensive Wilderness Inventory of Selected Areas Map October 1979
- (X) Intensive Wilderness Inventory Map March 1980
- (X) Intensive Wilderness Inventory, Final Decisions Map November 1980
- (X) November 1981 *Stateline Intensive Wilderness Inventory Final Decision, Oregon, Idaho, Nevada, Utah* (tan pamphlet)

D.) BLM District(s)/Field Office(s)

- Vale District/Jordan Resource Area

2) BLM Inventory Findings on Record:

Unit#/Name	Size (acres)	Natural Condition	Outstanding Solitude	Outstanding Primitive & Unconfined Recreation	Supplemental Values
Owyhee River 3-143	424*	Y	Y	Y	Y
Hanson Canyon 3-149	15,960	Y	N	N	N
Total acres>>	15,960				

* This area was originally part of Unit 3-143, then Unit 3-143A, and finally Unit 3-195. It was dropped from Unit 3-195 in the November 1981 *Stateline Intensive Wilderness Inventory Final Decision, Oregon, Idaho, Nevada, Utah* (tan pamphlet).

FORM 2

DOCUMENTATION OF CURRENT WILDERNESS INVENTORY CONDITIONS:

Inventory Unit Name/Number: Hanson Canyon OR-036-016

For this exercise BLM refers to the unit as 2007 Hanson Canyon OR-036-016. A citizen wilderness proposal provided by Oregon Natural Desert Association (ONDA) received February 2004 identified BLM unit OR-036-016 as a portion of their proposal known as the "Mouse Trap Butte proposed WSA Addition." ONDA feels that the citizen proposal presents new information that documents wilderness criteria and therefore qualifies the area for interim protection as a Wilderness Study Area. The Mouse Trap Butte proposed WSA Addition also includes BLM unit Coyote Wells OR-036-015.

1) Is the unit of sufficient size?

Yes X No

Unit OR-036-016 is comprised of 16,476 acres, meeting the size criteria. The 16,476 total acres that comprise the OR-036-016 unit as shown in Form 2 differ slightly from the 15,960 total acres listed for this unit in Form 1. Acreage for unit OR-036-016 in Form 2 is calculated from BLM GIS information and includes a 424-acre area that was part of the Owyhee River Canyon unit OR-3-195 (1981). The 424-acre area was dropped from unit OR-3-195 in the 1981 Stateline Intensive Wilderness Inventory Final Decision. The remaining 192-acre difference from Form 1 was either not calculated properly or resulted from a rounding error from methods and maps used in the initial 1978 inventory. The citizen wilderness proposal identified 23,565 acres in their Mouse Trap Butte proposed WSA Addition that includes BLM unit Hanson Canyon OR-036-016 and Coyote Wells OR-036-015 within its boundary.

Description:

The boundaries of unit OR-036-016 are identified as BLM road 6357-0-C0 on the southwest, BLM road 6357-0-00 on the west, and BLM road 6357-0-B0 on the northwest. BLM has determined that the eastern and southern route boundaries for the Hanson Canyon unit OR-036-016 now consist of a shared boundary with the Owyhee Canyon WSA. BLM route 6372-0-00 and two segments of County Road 522 along the WSA boundary are no longer classified as roads (as they were in the 1979 inventory) but as motorized primitive trails (refer to BLM route 6372-0-00 and County Road 522 analysis forms). Because these routes have been reclassified, the Hanson Canyon OR-036-016 unit is no longer isolated from the Owyhee Canyon WSA by a series of road as boundaries, but rather is now contiguous with the WSA. The eastern side of the unit is comprised of a portion of BLM route 6372-0-00 (motorized primitive trail) and two segments of County Road 522 (motorized primitive trails), one north of BLM route 6372-2-00 and the other located west of BLM route 6372-0-00 along the southern boundary. Periodic maintenance of 13.3 miles of boundary roads has occurred in the past (no confirmed dates available) and they are used regularly by ranchers (as observed by current BLM staff) and BLM employees for livestock management. Refer to map 2007_Hanson_Canyon_OR_036_016.pdf for the unit boundary.

The citizen wilderness proposal boundaries for the Mouse Trap Butte proposed WSA Addition unit differ from BLM's unit OR-036-016 boundaries because ONDA claims that the southwest boundary BLM road 6357-0-C0 of BLM unit OR-036-016 does not meet the road definition and therefore BLM unit Coyote Wells OR-036-015 is part of their proposed unit. BLM does not agree with their road determination and has explained in BLM road 6357-0-C0 analysis form why BLM road 6357-0-C0 meets the definition of a road and separates the two BLM units.

2) Is the unit in a natural condition?

Yes X No ___

Description:

Human imprints within the Hanson Canyon OR-036-016 unit include four earthen reservoirs, one 5.3 mile fence along the southern boundary and 19.7 miles of motorized primitive trail (11.4 miles are shared boundary with the Owyhee Canyon WSA). The reservoirs, fenceline, and interior motorized primitive trails are substantially unnoticeable because of the vegetative screening provided by sagebrush on the relatively flat terrain. Overall, the area appears to be primarily affected by the forces of nature with the imprint of human activity substantially unnoticeable. Refer to map 2007_Hanson_Canyon_OR_036_016A.pdf for human imprints.

3) Does the unit have outstanding opportunities for solitude?

Yes X No ___

Description:

Hanson Canyon unit OR-036-016 is an irregular diamond shape approximately 6 miles in length and 6 miles in width at the central axis of the unit. The unit tapers to about 2 miles in width at all four corners of the diamond. The majority of the unit consists of a flat to rolling open sagebrush plateau. Mouse Trap Butte provides the only variation in topographic relief in the unit. The butte rises about 200-250 feet above its surrounding area in the northern portion of the unit, and there is little change in elevation in the remainder of the unit. Topographic relief is minimal within the unit with elevations ranging from about 4,780 feet mean sea level (msl) along the north corner and rising to 5,038 feet msl at the top of Mouse Trap Butte. Elevation changes in most of the unit traversing from north to south or from east to west are very gradual, averaging about 20-30 feet per mile and about 30-50 feet lower than the top of Mouse Trap Butte. The headwaters of Hanson Canyon provide the only other topographic relief in the unit, although this area covers less than one-half mile before crossing the southeastern boundary of the unit. Hanson Canyon drains to the southeast through an open sagebrush flat with a uniform gentle gradient containing no deep depressions or vegetation which would provide locations for solitude. The unit provides limited vegetative screening, consisting of broad expanses of low and big sagebrush with little opportunity for solitude.

Although the unit provides limited opportunity for solitude because BLM road 6372-0-00 and County Road 522 have been reclassified as motorized primitive trails, BLM unit Hanson Canyon OR-036-016 is no longer isolated from the Owyhee Canyon WSA. Because the Hanson Canyon unit is contiguous with the WSA it is considered a continuation of those outstanding opportunities for solitude wilderness characteristics identified for the Owyhee Canyon WSA. Because of the existing 11.4 miles of motorized primitive trails is contiguous with the Owyhee Canyon WSA, BLM unit OR-036-008 provides outstanding opportunities for solitude.

A citizen's wilderness proposal (ONDA, February 2004) includes unit OR-036-016 as a contiguous area with other previously BLM-identified inventory units (Coyote Wells - BLM unit OR-036-015, and the Owyhee Canyon WSA) for their proposed wilderness area. The Mouse Trap Butte proposal's larger size, configuration, and diversity of natural features led ONDA to conclude that the area has outstanding opportunities for solitude.

BLM has concluded that unit OR-036-015 has limited vegetative and topographic screening, is bounded by roads on all sides, does not contain outstanding opportunities for solitude or primitive

and unconfined recreation wilderness characteristics, and is not contiguous with BLM unit Hanson Canyon OR-036-016. BLM has also concluded that because the boundary consisting of an existing network of motorized primitive trails along the eastern and southern boundaries of BLM unit OR-036-016 is contiguous with the Owyhee Canyon WSA, and the unit therefore takes on the wilderness characteristics of the WSA, that the Hanson Canyon unit provides outstanding opportunities for solitude.

4) Does the unit have outstanding opportunities for primitive and unconfined recreation?

Yes X No ___

Description:

Opportunities for primitive and unconfined types of recreation are available in the unit. However, opportunities for activities within the unit such as hiking, backpacking, hunting, wildlife viewing, horseback riding, and photography are not outstanding because the unit lacks scenic quality, diversity of landforms, and challenging terrain. Mouse Trap Butte is the only topographic feature in the unit that alters the flatness of the terrain. The present inventory agrees with the 1978 inventory that determined the unit lacks exceptional scenery and a diversity of landforms that would result in a strong attraction to the unit for any type of primitive recreation activity. Backpacking across the unit could be a monotonous experience with no change in hiking conditions or scenery. There are no unique photographic opportunities in the unit. Despite the unit's size, the lack of scenic quality and lack of diversity of landforms render the opportunities for primitive and unconfined recreation less than outstanding.

The BLM inventory team identified that unit OR-036-016 unit provided only limited opportunities for primitive and unconfined recreation. Because BLM road 6372-0-00 and County Road 522 are now reclassified as motorized primitive trails, this unit is no longer isolated from the Owyhee Canyon WSA. The Hanson Canyon unit now is contiguous with the WSA and is therefore considered to possess a continuation of those outstanding opportunities for primitive and unconfined recreation wilderness characteristics identified for the Owyhee Canyon WSA. BLM unit OR-036-016 provides outstanding opportunities for primitive and unconfined recreation because of the now contiguous nature between the unit and the WSA.

5) Does the unit have supplemental values?

Yes X No ___

Description:

With some minor exceptions, the ecological integrity of rangeland in this unit has been largely unaffected by the combined impacts of wildfire and invasive, non-native plants such as cheatgrass. This means the area possesses wildlife habitat supplemental values for sagebrush-dependent species of BLM management importance including pygmy rabbit, sagebrush vole, greater sage-grouse, Brewer's sparrow, black-throated sparrow, sage sparrow, loggerhead shrike, and sage thrasher. Observed rangeland conditions within this unit can be expected to contribute towards the existence of healthy sagebrush-dependent wildlife populations for a large area and over the long term because: (1) native plant functional and structural groups are well represented within the unit, and (2) wildlife forage, cover, and structure is available for use by species of management importance.

In contrast to conditions described above, rangeland at similar elevations and in similar ecological sites within Malheur County, Oregon has been highly disturbed due to the combined effects of improper historical grazing use, loss of biological crust integrity, invasive plant establishment,

and catastrophic wildfire impacts over the last few decades. Cheatgrass presence is known to accelerate and aggravate wildfire spread because it is a highly flammable fine fuel, and wildfire often reduces or completely eliminates critical shrub-based forage, cover, and habitat structure values for many species of wildlife. Literally millions of acres of Wyoming big sagebrush habitat types, similar to those within this unit, have been burned over the last few decades and recovery of these losses will take multiple decades if not centuries to occur.

Finally, the land considered within this unit is also recognized as part of the Owyhee Uplands Physiographic Province, a region incorporating rangeland in Oregon, Idaho, and Nevada which supports some of the largest contiguous blocks of intact sagebrush steppe remaining west of the Continental Divide.

SUMMARY OF FINDINGS AND CONCLUSION:

Inventory Unit Name/Number: Hanson Canyon OR-036-016

Summary

Results of Analysis:

- | | | | |
|---|-------|----|----|
| 1) Does the area meet any of the size requirements? | [Yes] | No | |
| 2) Does the area appear to be natural? | [Yes] | No | |
| 3) Does the area offer outstanding opportunities for solitude or a primitive and unconfined type of recreation? | [Yes] | No | NA |
| 4) Does the area have supplemental values? | [Yes] | No | NA |

Conclusion

Check One:

(X) The area or a portion of the area has wilderness character.

() The area does not have wilderness character.


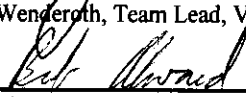
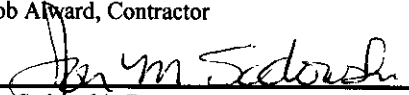
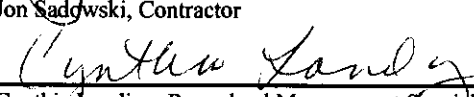

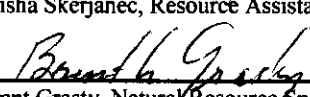
The ID team has reviewed the findings summarized in the original Statewide Wilderness Inventory as well as in the published decision documents and maps identified on Form 1. Current conditions relative to the presence or absence of wilderness characteristics have been considered including citizen wilderness proposals. Based on all the best available information and staff field visits to the area since 2000, the ID team has found compelling reasons, described in sections above, to change the existing BLM inventory decisions for solitude, primitive and unconfined recreation, and supplemental values wilderness characteristics. BLM finds that the naturalness of the area is primarily affected by the forces of nature, outstanding opportunities for solitude and primitive and unconfined recreation are present in the unit, and there are supplemental values present.

Sources of Reference for Evaluation:

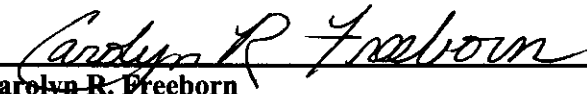
- All BLM documents listed in Form 1; existing BLM wilderness inventory information.
- Wilderness Inventory Recommendations: Vale District, Submitted by Oregon Natural Desert Association (ONDA), February 6, 2004.
- Current geographic information system (GIS) data on existing projects, vehicle routes/roads, land ownership, etc.
- BLM Job Documentation Record (JDR) files.
- National Agriculture Imagery Project digital images (2005).
- Official BLM Transportation Plan Map.
- BLM staff has obtained first-hand field knowledge about this unit's plant communities, road conditions, and other attributes as a result of rangeland health investigations conducted between July and October of the year 2000. BLM gathered quantitative rangeland data from trend plots in support of the assessment and evaluation process for Louse Canyon Geographic Management Area, but most other data collected for rangeland health evaluation purposes were either estimated or qualitative in nature. BLM staff has also visited this and adjoining

units annually and on multiple occasions after 2000 in the process of establishing and reading riparian monitoring locations, performing layout and design work for rangeland development projects, conducting rangeland supervision duties, collecting livestock utilization data, and documenting current road conditions. Field observations were made during Rangeland Standards and Guides assessment work in 2000.

Wilderness Characteristics Interdisciplinary Team:

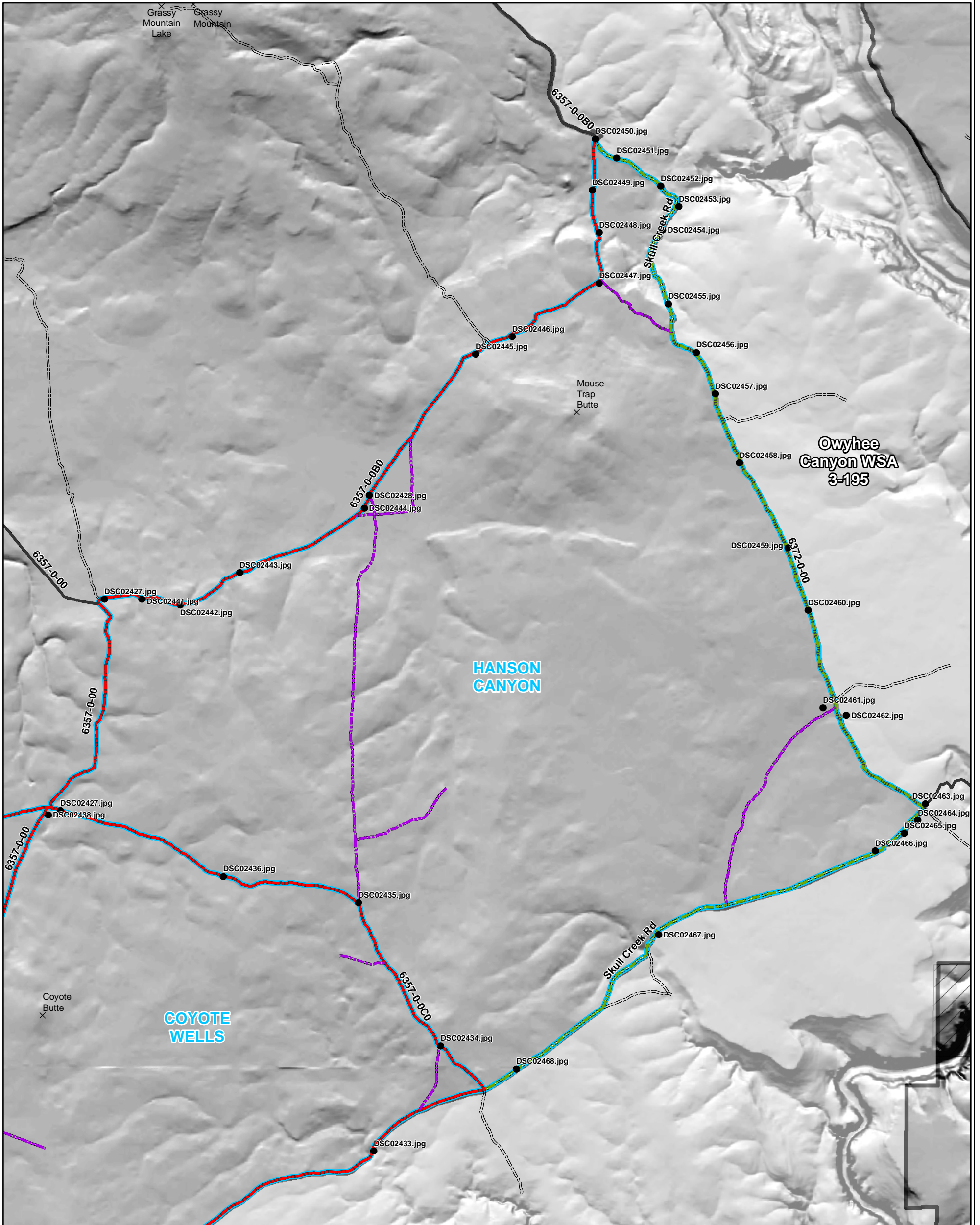
	10/26/07
Jack Wenderoth, Team Lead, Vale District	Date
	10/26/07
Bob Alward, Contractor	Date
	10/26/07
Jon Sadowski, Contractor	Date
	10-26-07
Cynthia Landing, Rangeland Management Specialist, Vale District	Date
	10/26/07
Trisha Skerjanec, Resource Assistant — GIS, Vale District	Date
	10/24/07
Brent Grasty, Natural Resource Specialist — GIS, Vale District	Date

Concurrence:

	10/26/07
Carolyn R. Freeborn Field Manager, Jordan R. A.	Date

This form documents information that constitutes an inventory finding on wilderness characteristics. It does not represent a formal land use allocation or a final agency decision subject to administrative remedies under either 43 CFR parts 4 or 1610.5-2.

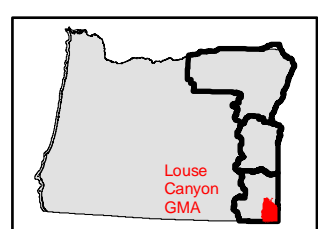
HANSON CANYON
OR-036-016
ACRES: 16476



- Legend**
- DSC022291.jpg Photo Points
 - Boundary Road
 - WSA Shared Bnd
 - Primitive Route
 - Wilderness Inventory Unit
 - Land Status**
 - Private
 - Bureau of Land Management
 - Wilderness Study Area



1:50,000



U.S. DEPARTMENT OF THE INTERIOR
BUREAU OF LAND MANAGEMENT

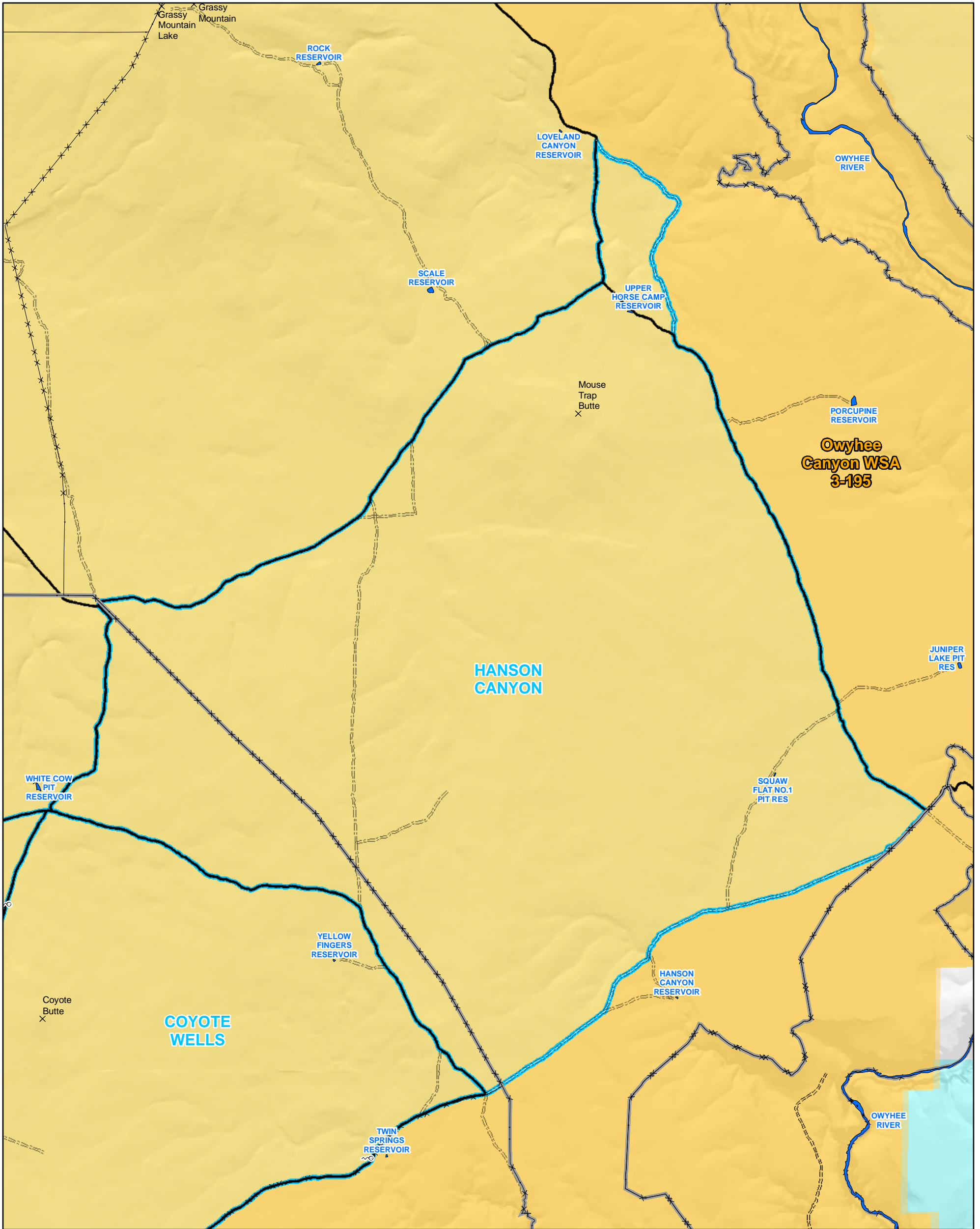


VALE DISTRICT
 Louse Canyon
 Geographic Management Area
 Wilderness Inventory Maintenance

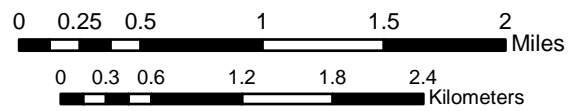
October 26, 2007

No warranty is made by the Bureau of Land Management as to the accuracy, reliability, or completeness of these data for individual or aggregate use with other data. Original data were compiled from various sources. This information may not meet National Map Accuracy Standards. This product was developed through digital means and may be updated without notification.

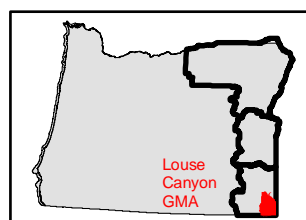
HANSON CANYON
 OR-036-016
 ACRES: 16476



- Legend**
- Wilderness Inventory Unit
 - Wilderness Study Areas
 - BLM Inventory Routes
 - Other Routes
 - Allotments
 - Pasture Boundaries
 - BLM Reservoirs
 - BLM Developed Springs
 - Other Springs
 - Land Status**
 - Bureau of Land Management
 - Forest Service
 - Bureau of Indian Affairs
 - Other Federal Lands
 - Private
 - State



1:50,000



U.S. DEPARTMENT OF THE INTERIOR
 BUREAU OF LAND MANAGEMENT



VALE DISTRICT

Louse Canyon
 Geographic Management Area
 Wilderness Inventory Maintenance

October 26, 2007

No warranty is made by the Bureau of Land Management as to the accuracy, reliability, or completeness of these data for individual or aggregate use with other data. Original data were compiled from various sources. This information may not meet National Map Accuracy Standards. This product was developed through digital means and may be updated without notification.

**H-6300-1-WILDERNESS INVENTORY MAINTENANCE
IN BLM OREGON/WASHINGTON**

APPENDIX C – ROAD¹ ANALYSIS

Wilderness Inventory Area Name and Number (Unit ID): Hanson Canyon OR-036-016

Route Name and/or Identifier: BLM, Deadman Pass/6372-0-00; Mouse Trap Butte proposed
WSA Addition TF17 d

I. LOCATION

Refer to attached map: 2007_Hanson_Canyon_OR_036_016.pdf and BLM corporate data (GIS).

List photo point references (if applicable): BLM, DSC02447, DSC02456-DSC02463;
Mouse Trap Butte proposed WSA Addition DB020-DB021, DB56-DB058

II. CURRENT PURPOSE OF ROUTE

Describe: BLM road 6372-0-00 is utilized mainly by ranchers (as observed by current BLM staff) and by BLM staff for the administration of rangeland resources, livestock grazing, and the maintenance of livestock improvements (fences, springs, and reservoirs) in two allotments. The road is also used on a seasonal basis by hunters and recreation enthusiasts.

III. ROAD RIGHT-OF-WAY

Is a road right-of-way associated with this route? Yes ___ No X Unknown ___

IV. CONSTRUCTION

Yes X No ___

Examples: Paved _____ Bladed X Graveled _____
Roadside Berms _____ Cut/Fill _____ Other _____

Describe: Local information about the Louse Canyon area points to the origin of BLM route 6372-0-00 as a military wagon road in the late 1800s and along with later off-road vehicle use, as the source of a two-track trail. Sometime in the late 1960s to early 1970s the road surface was bladed without creating ditches and leaving a few berms, using a road-grader. Route 6372-0-00 surface material consists mainly of sandy soils with an occasional rocky area, and it is one of the BLM routes in the Vale District Transportation

Plan. In the original 1978-1981 inventory and decision process for wilderness characteristics, route 6372-0-00 was the eastern boundary road between the Hanson Canyon unit and the Owyhee Canyon WSA.

The boundary along the eastern side of the Hanson Canyon unit is comprised of a portion of BLM route 6372-0-00 (motorized primitive trail) and two segments of County Road 522 (motorized primitive trails), one north of BLM route 6372-2-00 and the other located west of BLM route 6372-0-00 along the southern boundary of the unit.

V. IMPROVEMENTS

Yes ___ No X

Yes or No for each: By hand tools No By machine No

Examples: Culverts _____ Stream Crossings _____ Bridges _____ Drainage _____
Barriers _____ Other _____

Describe: _____

VI. MAINTENANCE

A. Is there Evidence or Documentation of Maintenance using hand tools or machinery?

Yes ___ No X

By hand tools _____ By machine _____

Explain: During field reconnaissance in July 2007 and review of available information, the current wilderness inventory team found no evidence that maintenance has been performed on BLM route 6372-0-00 since the road was developed. Because the route occurs on relatively flat terrain the route has remained passable without maintenance.

B. If the route is in good condition, but there is no evidence of maintenance, would mechanical maintenance with hand tools or machines be approved by BLM in the event this route became impassable?

Yes X No _____

Comments: Although BLM route 6372-0-00 would be approved to be maintained by management as needed, if the road base became impassable, it would remain a low priority to be repaired because of its limited annual use. BLM would maintain this motorized primitive trail as needed to allow unrestricted passage. To reduce the potential for erosion and establishment of invasive plant and weed species, BLM emphasizes

minimal ground disturbance for road construction and maintenance through Best Management Practices (BMPs) as described in the SEORMP, Appendix O. BMPs are designed to assist in achieving land use objectives for maintaining or improving water quality, soil productivity, and the protection of watershed resources from ground disturbing activities. Therefore, BLM does not grade many roads unless obstruction to vehicle passage is evident. To further reduce ground disturbance and to minimize disruption of natural drainage patterns, roads are kept to the minimal width necessary. Additional precautions are taken to reduce vegetation removal by retention of vegetation on cut slopes unless it poses a safety hazard or restricts maintenance activities, and by conducting roadside brushing of vegetation in a way that prevents disturbance to plant root systems and does not create visual intrusions.

VII. REGULAR AND CONTINUOUS USE

Yes X No _____

BLM road 6372-0-00 has annual use as evidenced by the lack of brush in the road and by well-used bare ground where vehicle tires track (photo DSC02461). This route is used mainly for maintenance of a fenceline and access to two livestock grazing allotments. This route does not receive continual use because it is only an isolated loop road and other routes are available as main travel routes.

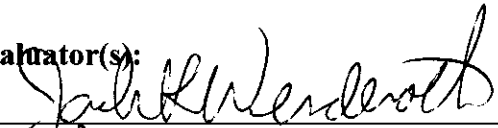
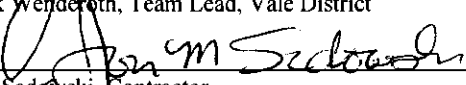

VIII. CONCLUSION

To meet the definition of a road, items IV or V, and VI-A or B, and VII must be checked yes.

Road: Yes _____ No X

Explanation: BLM has determined that route 6372-0-00 does not meet the definition of a road, as stated in sections IV, VI-A and VI-B, and VII above. BLM road 6372-0-00 was minimally constructed by mechanical equipment, has not been maintained since being constructed, would be approved as a low priority to be maintained by management as needed, if the road base became impassable, and has only limited annual use.

Evaluator(s):

	Date <u>10-26-2007</u>
Jack Wenderoth, Team Lead, Vale District	
	Date <u>10-26-2007</u>
Jon Sadowski, Contractor	
	Date <u>10-26-2007</u>
Cynthia Landing, Rangeland Management Specialist, Vale District	

¹ Note: The following definition of road is quoted from OSO Draft (4/19/07) H-6300-1, Wilderness Inventory Maintenance in BLM Oregon/Washington:

road: The BLM will continue to base the definition of what constitutes a “road” from the FLPMA’s legislative history. The language below is from the House of Representatives Committee Report 94-1163, page 17, dated May 15, 1976, on what became the FLPMA. It is the only statement regarding the definition of a road in the law or legislative history.

“The word ‘roadless’ refers to the absence of roads which have been improved and maintained by mechanical means to insure relatively regular and continuous use. A way maintained solely by the passage of vehicles does not constitute a road.”

The BLM previously adopted and will continue to use the following sub-definitions of certain words and phrases in the BLM road definition stated above:

a. **“Improved and maintained”** – Actions taken physically by people to keep the road open to vehicle traffic. “Improved” does not necessarily mean formal construction. “Maintained” does not necessarily mean annual maintenance.

b. **“Mechanical means”** – Use of hand or power machinery or tools.

c. **“Relatively regular and continuous use”** – Vehicular use that has occurred and will continue to occur on a relatively regular basis. Examples are: access roads for equipment to maintain a stock water tank or other established water sources; access roads to maintained recreation sites or facilities; or access roads to mining claims.

A road that was established or has been maintained solely by the passage of vehicles would not be considered a road, even if it is used on a relatively regular and continuous basis. Vehicle roads constructed by mechanical means but that are no longer being maintained by mechanical methods are not roads. Sole use of hands and feet to move rocks or dirt without the use of tools or machinery does not meet the definition of “mechanical means.” Roads need not be “maintained” on a regular basis but rather “maintained” when road conditions warrant actions to keep it in a usable condition. A dead-end (cherry-stem) road can form the boundary of an inventory area and does not by itself disqualify an area from being considered “roadless.”

**H-6300-1-WILDERNESS INVENTORY MAINTENANCE
IN BLM OREGON/WASHINGTON**

APPENDIX D – PHOTO LOG

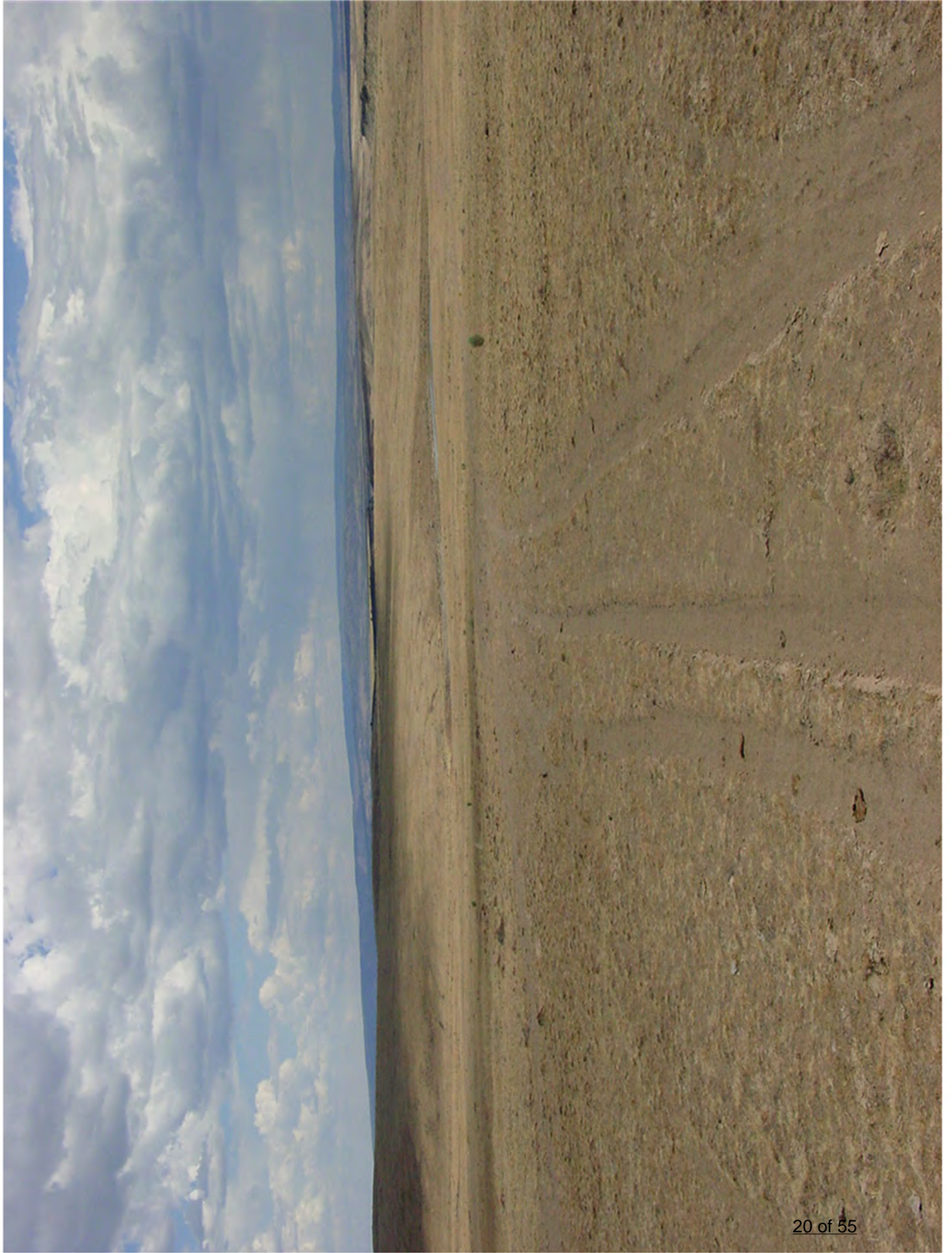
Photographer (s): Landing,

Inventory Area Name and No.

Hanson Canyon OR-036-016 Deadman Pass 6372-0-00

DATE	Frame #	Camera Direction	Description	GPS/UTM Location	Township	Range	Section
7/27/2007	DSC02447	N	To Loveland Horsecamp	478087 4715717	T34S	R44E	Sec 13
7/27/2007	DSC02456	S	Visible road	479412 4714813	T34S	R44E	Sec13
7/27/2007	DSC02457	S	Visible Road	479684 4714203	T34S	R45E	Sec 19
7/27/2007	DSC02458	S	Visible road	480001 4713299	T34S	R45E	Sec 19
7/27/2007	DSC02459	S	Visible Road	480653 4712142	T34S	R45E	Sec 30
7/27/2007	DSC02460	S	Visible Road	480926 4711301	T34S	R45E	Sec 30
7/27/2007	DSC02461	SW	Spur road	481157 4709998	T34S	R45E	Sec 31
4/27/2007	DSC02462	S	Road continues	481157 4709998	T34S	R45e	Sec 32
4/27/2007	DSC02463	S	Gate to Ambrose Mahar	482524 4708694	T35S	R45E	Sec 05

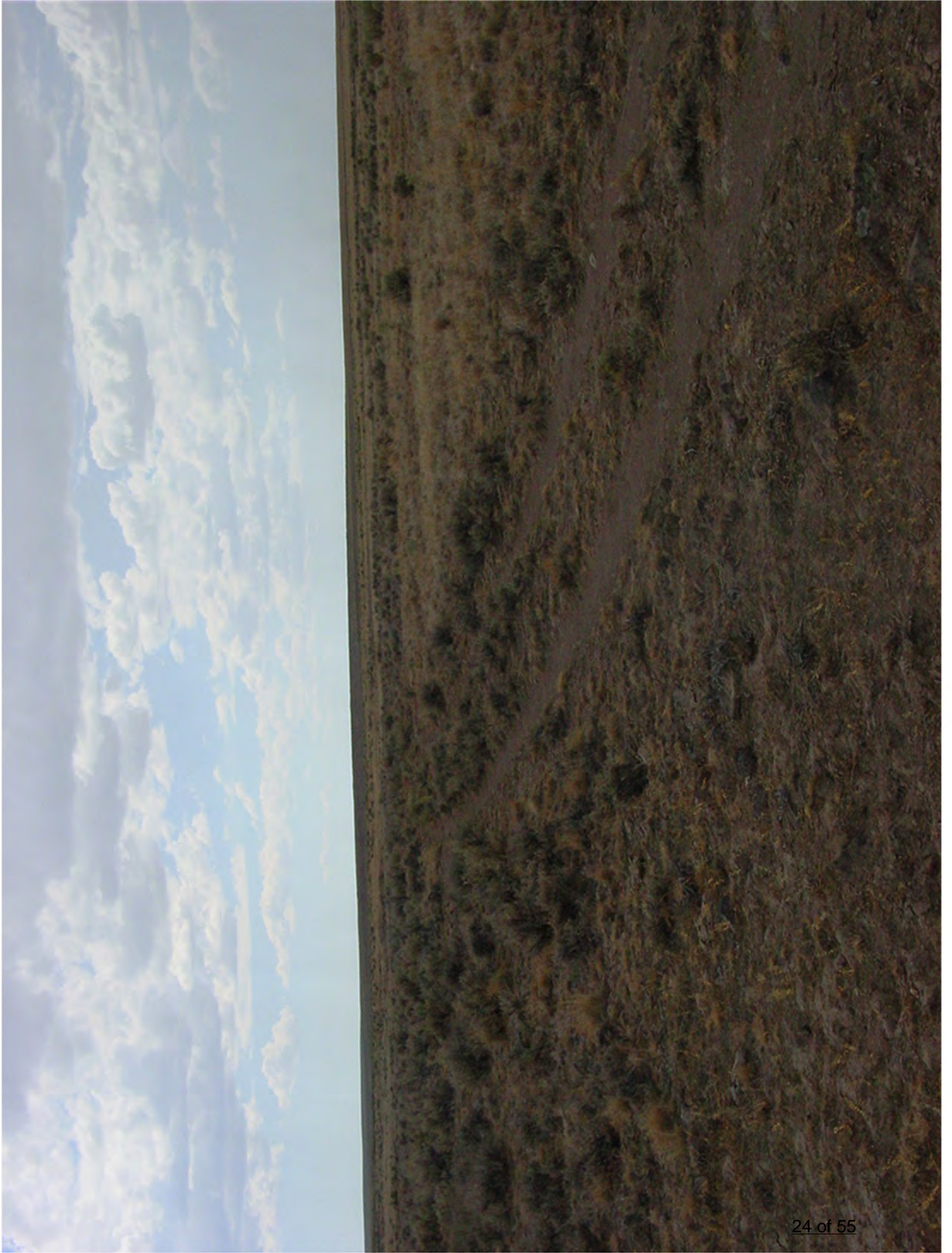


















**H-6300-1-WILDERNESS INVENTORY MAINTENANCE
IN BLM OREGON/WASHINGTON**

APPENDIX C – ROAD¹ ANALYSIS

Wilderness Inventory Area Name and Number (Unit ID): Boundary road between BLM
Coyote Wells OR-036-015, Hanson Canyon OR-036-016, and Owyhee Canyon WSA

Route Name and/or Identifier: Twin Springs Road/6357-0-C0; Mouse Trap Butte proposed WSA
Addition TF17c,TF21a,TF21d,TF24

I. LOCATION

Refer to attached map: 2007_Coyote_Wells_OR_036_015.pdf and BLM corporate data (GIS).

List photo point references (if applicable): BLM, DSC02429-DSC02430, DSC02432-DSC02438, DSC02259-DSC02260; Mouse Trap Butte proposed WSA Addition DB044-DB045, DB48-DB50, DB52

II. CURRENT PURPOSE OF ROUTE

Describe: BLM road 6357-0-C0 is utilized mainly by ranchers (as observed by current BLM staff) and by BLM staff for the administration of rangeland resources, livestock grazing, and the maintenance of livestock improvements (fences, springs, and reservoirs) in two pastures. The road is also used on a seasonal basis by hunters and recreation enthusiasts. BLM road 6357-0-C0 forms the boundary road between the Coyote Wells and Hanson Canyon units, and between the Owyhee Canyon WSA and the Coyote Wells unit.

III. ROAD RIGHT-OF-WAY

Is a road right-of-way associated with this route? Yes ___ No X Unknown ___

IV. CONSTRUCTION

Yes X No ___

Examples: Paved ___ Bladed X Graveled ___
Roadside Berms X Cut/Fill ___ Other ___

Describe: Local information about the Louse Canyon area points to the origin of BLM road 6357-0-C0 as a military wagon road and, along with later off-road vehicle use, as

the source of a two-track trail. This road was used as a wagon route in the late 1800s. Sometime in the late 1960s to early 1970s the road surface was bladed and berms added on the roadsides, using a road-grader. The bladed road with berms can be clearly seen in BLM photographs DSC02432, DSC02435, and DSC02436. Road 6357-0-C0 consists of natural materials and is one of the BLM roads in the Vale District Transportation Plan.

The 2004 citizen proposal "Mouse Trap Butte proposed WSA Addition" addressed BLM road 6357-0C0 between the Coyote Wells and Hanson Canyon units. ONDA refers to two road sections in their inventory for that section of BLM road 6357-0-0C0, as TF21a and TF21d. In ONDA's document they state about TF21a and TF21d, "Neither appears to have been mechanically constructed, nor are they maintained." ONDA refers to the northern portion of road 6357-0-C0 as TF21a (photos DB44, DB45) and the southern portion as TF21d (photo DB52). ONDA's photographs cover only the starting and end points of this road and no other portion of the road's approximate 3.5-mile length. Further, in their 2004 document ONDA's information about roads includes a short narrative about their road segments of BLM road 6357-0-C0, stating, "TF21a is very rocky and overgrown (photo DB45), and TF21d is nothing more than a two track (photo DB52)." Based on these two photographs, ONDA determined that BLM road 6357-0-C0 was not a road but a way between the two BLM units.

BLM does not support ONDA's conclusion and, based on BLM photographs (DSC02434-DSC02438) and field reconnaissance in April 2007, has determined that BLM road 6357-0-C0 does meet the definition of a road. BLM's photographs clearly show sections of the road, throughout the entire 3.5 miles, where the road has been bladed and has berms on the side. Vegetation has reclaimed some of the ditches and berms but the road base is clear of vegetation with bare mineral soil across much of the roadbed. BLM photographs for the starting point (photos DSC02437 and DSC02438) and end points (photo DSC02434) of road 6357-0-C0 are basically the same as ONDA's because the photos were taken from nearly identical points. Both sets of photos taken at the northern entrance to road 6357-0-C0 show a rocky area with some brush in the road. This entrance is located in a drainage bottom and contains outcrops of bedrock in the roadbed. BLM does not blade a road for maintenance simply because of the presence of bedrock, and blading the drainage would only create unneeded disturbance to a firm roadbase. In addition, when grading rock outcrops with road-graders they tend to roll large chunks of rock from the roadbase creating large depressions that then need to be filled with natural material which erodes over time, leaving large holes in the road.

On August 21, 2006 a lightning-caused wildfire burned approximately 905 acres near the Twin Springs area within the unit. In an effort to suppress this wildfire BLM road 6357-0-C0 was bladed with a road-grader. The road was bladed to create a mineral-soil fire break to help reduce chance of the fire spreading across BLM road 6357-0-C0 into the Owyhee Canyon WSA and the Hanson Canyon unit. Because the wildfire suppression made necessary the use of BLM road 6357-0-C0 as a fire containment boundary, maintenance was applied to the road, creating roadside soil berms and a bladed roadbed along most of its length where it is the boundary between the Coyote Wells unit and the Hanson Canyon unit (BLM photos DSC02435 and 436).

ONDA submitted similar information on their road segments TF17b and TF24 that cover the boundary between BLM Coyote Wells OR-036-015 unit and the Owyhee Canyon WSA. Because the wildfire suppression made necessary the use of BLM road 6357-0-C0 as a fire containment boundary, maintenance was applied to this section of road, creating roadside soil berms and a bladed roadbed along most of its length where it is the boundary between the Coyote Wells unit (BLM photos DSC02430 and 432) and the Owyhee Canyon WSA.

Since wildfire occurred 2 years after ONDA submitted their document and photographs covering BLM road 6457-0-C0, and because this road was graded after ONDA submitted their document, BLM now possesses new supporting information that road 6357-0-C0 has been maintained and does meet the definition of a road.

V. IMPROVEMENTS

Yes ___ No X

Yes or No for each: By hand tools No By machine No

Examples: Culverts ___ Stream Crossings ___ Bridges ___ Drainage ___
Barriers ___ Other ___

Describe: _____

VI. MAINTENANCE

A. Is there Evidence or Documentation of Maintenance using hand tools or machinery?

Yes X No ___

By hand tools ___ By machine X

Explain: Recent maintenance to BLM road 6357-0-C0 is evidenced by earthen berms left on the edge of the road, as shown in pictures DSC02430, DSC02432, DSC02435, and DSC02436. The mounded berm in picture DSC02435 clearly indicates recent grading and also shows no perennial native vegetation in the disturbance spoils. Picture DSC02435, taken in July 2007, also indicates lug tracks still in the road from the grader which bladed the road in late summer of 2006 in support of a wildfire. The series of photos taken along this road also shows that it was maintained only to the extent that was necessary for vehicle travel, which in some places left the middle of the road between wheel tracks untouched. This is consistent with Best Management Practices BLM has incorporated into the Southeastern Oregon Resource Management Plan for Vale District.

B. If the route is in good condition, but there is no evidence of maintenance, would mechanical maintenance with hand tools or machines be approved by BLM in the event this route became impassable?

Yes No

Comments: BLM road 6357-0-C0 receives annual use as evidence by the lack of brush in the most road segments and by the well-used bare ground where vehicles travel (DSC02432 and DSC02436). To reduce the potential for erosion and the establishment of invasive plant and weed species, BLM emphasizes minimal ground disturbance for road construction and maintenance through Best Management Practices (BMPs) as described in the SEORMP, Appendix O. BMPs are designed to assist in achieving land use objectives for maintaining or improving water quality, soil productivity, and the protection of watershed resources from ground disturbing activities. Therefore, BLM does not grade many roads unless obstruction to vehicle passage is evident. To further reduce ground disturbance and to minimize disruption of natural drainage patterns, roads are kept to the minimal width necessary. Additional precautions are taken to reduce erosion and vegetation removal by retention of vegetation on cut slopes, unless it poses a safety hazard or restricts maintenance activities, and by conducting roadside brushing of vegetation in a way that prevents disturbance to plant root systems and does not create visual intrusions.

VII. REGULAR AND CONTINUOUS USE

Yes No

BLM road 6357-0-C0 has annual use as evidence by the lack of brush in most road segments and by well-used bare ground where vehicle tires track (DSC02430, DSC02432, DSC02434-DSC02436). The road is well traveled, wide along most of its length, and is clearly defined on the landscape. The road is also used on a seasonal basis by hunters and recreation enthusiasts.

VIII. CONCLUSION

To meet the definition of a road, items IV or V, *and* VI-A or B, *and* VII must be checked yes.

Road: Yes No

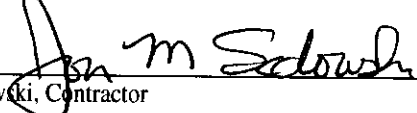
Explanation: BLM has determined that road 6357-0-C0 meets the definition of a road as stated in sections IV, VI-A and VI-B, and VII above. BLM road 6357-0-C0 was constructed by mechanical equipment, has been maintained since being constructed,

would be approved to be maintained by management as needed, if the road base became impassable, and has regular and continuous use.

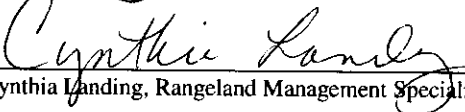
Evaluator(s):



Jack Wenderoth, Team Lead, Vale District Date 10-26-2007



Jon Sadowki, Contractor Date 10-26-2007



Cynthia Landing, Rangeland Management Specialist, Vale District Date 10-26-2007

¹ Note: The following definition of road is quoted from OSO Draft (4/19/07) H-6300-1, Wilderness Inventory Maintenance in BLM Oregon/Washington:

road: The BLM will continue to base the definition of what constitutes a “road” from the FLPMA’s legislative history. The language below is from the House of Representatives Committee Report 94-1163, page 17, dated May 15, 1976, on what became the FLPMA. It is the only statement regarding the definition of a road in the law or legislative history.

“The word ‘roadless’ refers to the absence of roads which have been improved and maintained by mechanical means to insure relatively regular and continuous use. A way maintained solely by the passage of vehicles does not constitute a road.”

The BLM previously adopted and will continue to use the following sub-definitions of certain words and phrases in the BLM road definition stated above:

a. **“Improved and maintained”** – Actions taken physically by people to keep the road open to vehicle traffic. “Improved” does not necessarily mean formal construction. “Maintained” does not necessarily mean annual maintenance.

b. **“Mechanical means”** – Use of hand or power machinery or tools.

c. **“Relatively regular and continuous use”** – Vehicular use that has occurred and will continue to occur on a relatively regular basis. Examples are: access roads for equipment to maintain a stock water tank or other established water sources; access roads to maintained recreation sites or facilities; or access roads to mining claims.

A road that was established or has been maintained solely by the passage of vehicles would not be considered a road, even if it is used on a relatively regular and continuous basis. Vehicle roads constructed by mechanical means but that are no longer being maintained by mechanical methods are not roads. Sole use of hands and feet to move rocks or dirt without the use of tools or machinery does not meet the definition of “mechanical means.” Roads

need not be “maintained” on a regular basis but rather “maintained” when road conditions warrant actions to keep it in a usable condition. A dead-end (cherry-stem) road can form the boundary of an inventory area and does not by itself disqualify an area from being considered “roadless.”

**H-6300-1-WILDERNESS INVENTORY MAINTENANCE
IN BLM OREGON/WASHINGTON**

APPENDIX D – PHOTO LOG

Photographer (s): Landing

Inventory Area Name and No.

Hanson Canyon OR-036-016 Twin Springs Road 6357-0-C0

DATE	Frame #	Camera Direction	Description	GPS/UTM Location	Township	Range	Section
6/21/2007	DSC02434	NW	Signs of recent use	475902 4705438	T35S	R44E	Sec 15
6/21/2007	DSC02435	NW	Bladed road	474884 4707384	T35S	R44E	Sec 10
6/21/2007	DSC02436	NW	Good road	473028 4707723	T35S	R44E	Sec 09
6/21/2007	DSC02437	NW	Junction	470636 4708633	T35S	R44E	Sec 06
6/21/2007	DSC02438	E	Back to Junction	470636 4708633	T35S	R44E	Sec 06











**H-6300-1-WILDERNESS INVENTORY MAINTENANCE
IN BLM OREGON/WASHINGTON**

APPENDIX C – ROAD¹ ANALYSIS

Wilderness Inventory Area Name and Number (Unit ID): Hanson Canyon OR-036-016

Route Name and/or Identifier: BLM, Skull Creek Road/County Road 522 ; Mouse Trap Butte
proposed WSA Addition TF17a & TF17b

I. LOCATION

Refer to attached map: 2007_Hanson_Canyon_OR_036_016.pdf and BLM corporate data (GIS).

List photo point references (if applicable): BLM, DSC02464-DSC02468; Mouse Trap Butte proposed WSA Addition DB052-DB058; (DSC02450-DSC02455; DB15-DB16)

II. CURRENT PURPOSE OF ROUTE

Describe: County Road 522 is utilized mainly by ranchers (as observed by current BLM staff) and by BLM staff for the administration of rangeland resources, livestock grazing, and the maintenance of livestock improvements (fences, springs, and reservoirs) in two allotments. The road is also used on a seasonal basis by hunters, recreation enthusiasts, and as access to private inholdings for livestock management.

III. ROAD RIGHT-OF-WAY

Is a road right-of-way associated with this route? Yes ___ No X Unknown ___

IV. CONSTRUCTION

Yes X No ___

Examples: Paved _____ Bladed X Graveled _____
Roadside Berms _____ Cut/Fill _____ Other _____

Describe: County Road 522 was originally a military wagon road developed in the late 1800s. It was bladed without the addition of ditches and berms sometime in the late 1960s to early 1970s. This road consists of natural material, is Malheur County's maintenance responsibility, and is not listed as one of the BLM routes in the Vale District Transportation Plan.

In the original 1978-1981 inventory and decision process for wilderness characteristics, County Road 522 is the southern boundary road between the Hanson Canyon unit and the Owyhee Canyon WSA. A small section of County Road 522 is also located to the north of BLM route 6372-0-00 near the Loveland Horse Camp. County 522 is a small loop road that was originally part of the Owyhee River Canyon unit OR-3-195 (1981). A 424-acre area that was bounded to the east by this section of County Road 522 was dropped from unit OR-3-195 in the 1981 Stateline Intensive Wilderness Inventory Final Decision, and County Road 522 then became a boundary of the Owyhee Canyon WSA.

V. IMPROVEMENTS

Yes ___ No X

Yes or No for each: By hand tools No By machine No

Examples: Culverts ___ Stream Crossings ___ Bridges ___ Drainage ___
Barriers ___ Other ___

Describe: _____

VI. MAINTENANCE

A. Is there Evidence or Documentation of Maintenance using hand tools or machinery?

Yes ___ No X

By hand tools _____ By machine _____

Explain: During field reconnaissance in July 2007 and review of available information, the current wilderness inventory team found no evidence that maintenance has been performed on County Road 522 since the road was developed. Because the route occurs on relatively flat terrain, the route has remained passable without maintenance.

B. If the route is in good condition, but there is no evidence of maintenance, would mechanical maintenance with hand tools or machines be approved by BLM in the event this route became impassable?

Yes X No _____

Comments: County Road 522 connects BLM roads 6372-0-00 and 6357-0-C0 and is approximately 4.5 miles in length. County Road 522 would be approved to be maintained by management as needed if the road base became impassable, although it would remain a low priority to be repaired because of its limited annual use and county maintenance

responsibility. BLM would maintain this section of road as necessary to provide access to livestock improvements and rangeland administration.

VII. REGULAR AND CONTINUOUS USE

Yes X No _____

County Road 522 has annual use as evidenced by the lack of brush in the road and by bare ground where vehicle tires track (DSC02466). This route is used mainly for maintenance of a fenceline, a reservoir, and access to two livestock grazing allotments. This route does not receive continual use because it is only an isolated loop road and other routes are available as main travel routes.

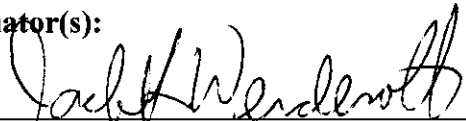
VIII. CONCLUSION

To meet the definition of a road, items IV or V, *and* VI-A or B, *and* VII must be checked yes.

Road: Yes _____ No X

Explanation: BLM has determined that County Road 522 does not meet the definition of a road as stated in sections IV, VI-A and VI-B, and VII above. County Road 522 was minimally constructed by mechanical equipment, has not been maintained since being constructed, would be approved to be maintained by management as needed if the road base became impassable at a low priority, and has only limited annual use.

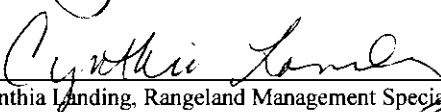
Evaluator(s):



Jack Wenderoth, Team Lead, Vale District Date 10-26-2007



Jon Sadowski, Contractor Date 10-26-2007



Cynthia Landing, Rangeland Management Specialist, Vale District Date 10-26-2007

¹ Note: The following definition of road is quoted from OSO Draft (4/19/07) H-6300-1, Wilderness Inventory Maintenance in BLM Oregon/Washington:

road: The BLM will continue to base the definition of what constitutes a “road” from the FLPMA’s legislative history. The language below is from the House of Representatives

Committee Report 94-1163, page 17, dated May 15, 1976, on what became the FLPMA. It is the only statement regarding the definition of a road in the law or legislative history.

“The word ‘roadless’ refers to the absence of roads which have been improved and maintained by mechanical means to insure relatively regular and continuous use. A way maintained solely by the passage of vehicles does not constitute a road.”

The BLM previously adopted and will continue to use the following sub-definitions of certain words and phrases in the BLM road definition stated above:

a. **“Improved and maintained”** – Actions taken physically by people to keep the road open to vehicle traffic. “Improved” does not necessarily mean formal construction. “Maintained” does not necessarily mean annual maintenance.

b. **“Mechanical means”** – Use of hand or power machinery or tools.

c. **“Relatively regular and continuous use”** – Vehicular use that has occurred and will continue to occur on a relatively regular basis. Examples are: access roads for equipment to maintain a stock water tank or other established water sources; access roads to maintained recreation sites or facilities; or access roads to mining claims.

A road that was established or has been maintained solely by the passage of vehicles would not be considered a road, even if it is used on a relatively regular and continuous basis. Vehicle roads constructed by mechanical means but that are no longer being maintained by mechanical methods are not roads. Sole use of hands and feet to move rocks or dirt without the use of tools or machinery does not meet the definition of “mechanical means.” Roads need not be “maintained” on a regular basis but rather “maintained” when road conditions warrant actions to keep it in a usable condition. A dead-end (cherry-stem) road can form the boundary of an inventory area and does not by itself disqualify an area from being considered “roadless.”

**H-6300-1-WILDERNESS INVENTORY MAINTENANCE
IN BLM OREGON/WASHINGTON**

APPENDIX D – PHOTO LOG

Photographer (s): Landing

Inventory Area Name and No.

Hanson Canyon OR-036-016 Skull Creek Road County Road 522

DATE	Frame #	Camera Direction	Description	GPS/UTM Location	Township	Range	Section
7/26/2007	DSC02450	E	Uphill	478040 4717689	T34S	R44E	Sec 12
7/26/2007	DSC02451	W	Back to horsecamp	478352 4717689	T34S	R44E	Sec 12
7/26/2007	DSC02452	N	Visible road	478927 4717032	T34S	R45E	Sec 13
7/26/2007	DSC02453	N	Visible road	479420 4716761	T34S	R45E	Sec 13
7/26/2007	DSC02454	N	Grader berms	478943 4716458	T34S	R45E	Sec 13
7/26/2007	DSC02455	N	No need to grade	479170 4715440	T34S	R45E	Sec 13
7/26/2007	DSC02464	SW	Change directions	481833 4708084	T35S	R45E	Sec 05
7/26/2007	DSC02465	SW	Visible Road	482498 4708511	T35S	R45E	Sec 08
7/26/2007	DSC02466	SW	Visible road	481833 4708084	T35S	R45E	Sec 07
7/26/2007	DSC02467	SW	Road continues	478894 4706919	T35S	R44E	Sec 12
7/26/2007	DSC92468	SW	Gate to Twin Spring Pasture	476973 4705112	T35S	R44E	Sec 14



