

Louse Canyon Wilderness Inventory Unit Index of Documents
Five Points OR-036-018, 11 total pages

Page 1: Index Cover Sheet

Page 2: Louse Canyon GMA – BLM Wilderness Inventory Units – Map

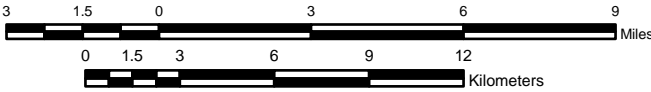
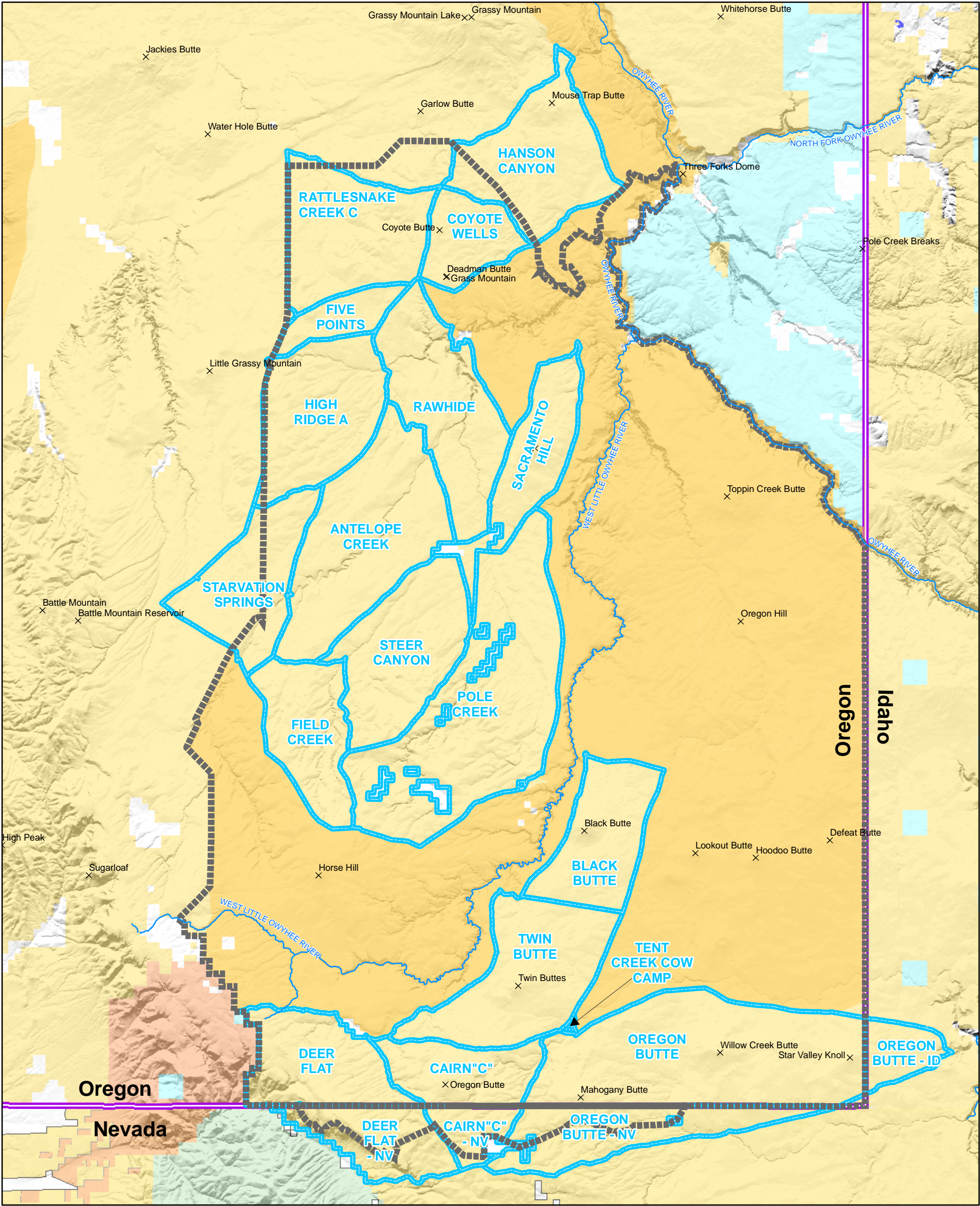
Page 3: Louse Canyon GMA – Oregon Natural Desert Association Proposed Wilderness Study Areas

Pages 4-9: H-6300-1-Wilderness Inventory Maintenance in BLM Oregon/Washington Appendix B – Inventory Area Evaluation

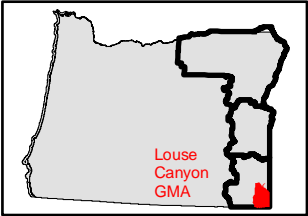
Page 10: Five Points Unit Wilderness Boundaries – Map

Page 11: Five Points Unit with Projects – Map

Louse Canyon GMA - BLM Wilderness Inventory Units



1:240,000



- Legend**
- Louse Canyon GMA Boundary
 - Resource Area Boundary
 - Wilderness Inventory Unit
 - Wilderness Study Areas

- Land Status**
- Bureau of Land Management
 - Forest Service
 - Bureau of Indian Affairs
 - Other Federal Lands
 - Private
 - State

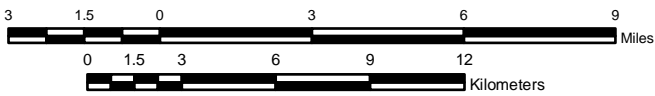
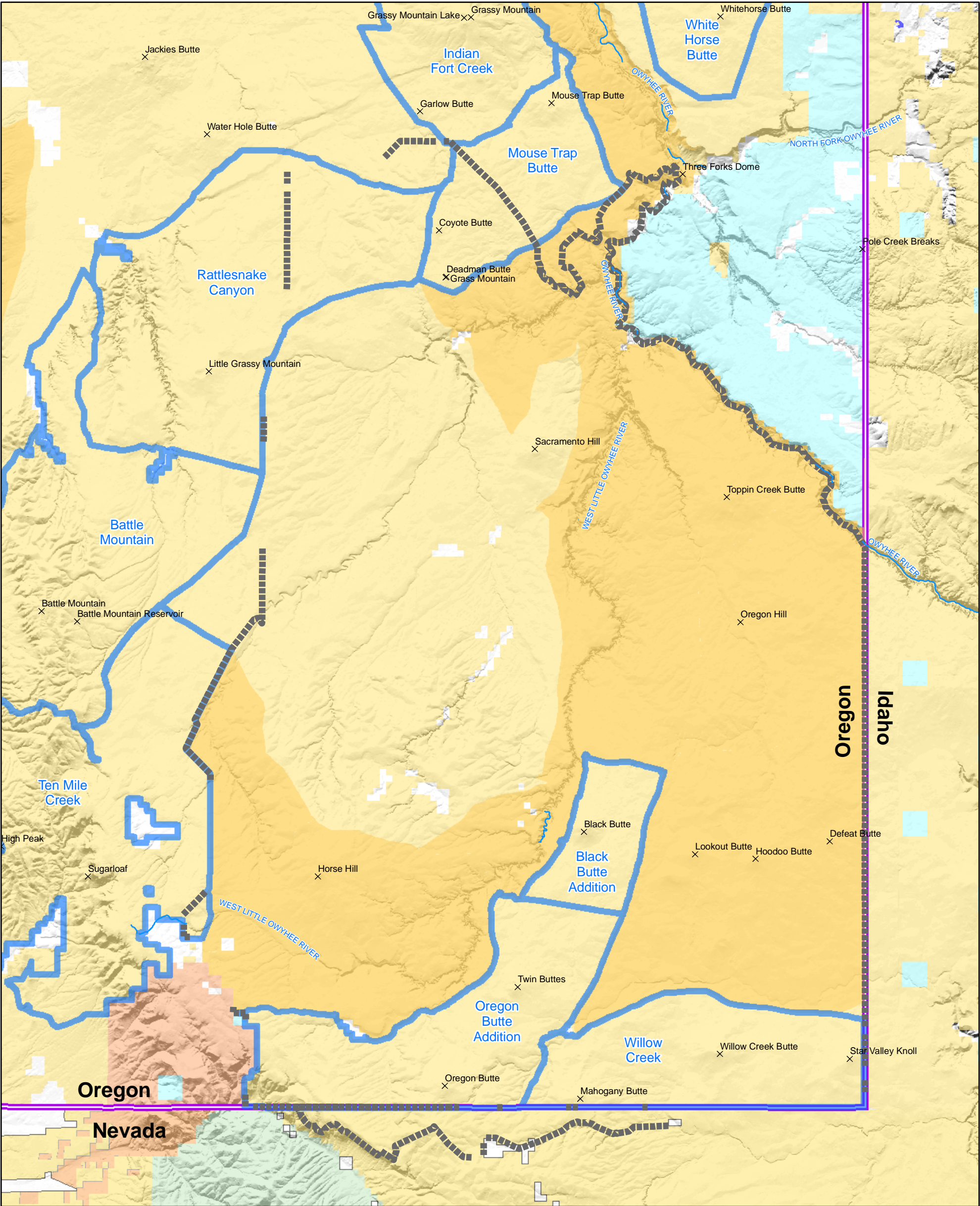
U.S. DEPARTMENT OF THE INTERIOR
BUREAU OF LAND MANAGEMENT



VALE DISTRICT
Louse Canyon
Geographic Management Area
Wilderness Inventory Maintenance
October 26, 2007

No warranty is made by the Bureau of Land Management as to the accuracy, reliability, or completeness of these data for individual or aggregate use with other data. Original data were compiled from various sources. This information may not meet National Map Accuracy Standards. This product was developed through digital means and may be updated without notification.

Louse Canyon GMA - Oregon Natural Desert Association Proposed Wilderness Study Areas



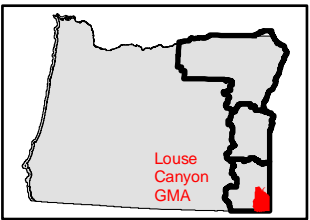
1:240,000

Legend

- Louse Canyon GMA Boundary
- Resource Area Boundary
- ONDA Units
- Wilderness Study Areas

Land Status

- Bureau of Land Management
- Forest Service
- Bureau of Indian Affairs
- Other Federal Lands
- Private
- State



U.S. DEPARTMENT OF THE INTERIOR
BUREAU OF LAND MANAGEMENT



VALE DISTRICT

Louse Canyon
Geographic Management Area
Wilderness Inventory Maintenance

October 26, 2007

No warranty is made by the Bureau of Land Management as to the accuracy, reliability, or completeness of these data for individual or aggregate use with other data. Original data were compiled from various sources. This information may not meet National Map Accuracy Standards. This product was developed through digital means and may be updated without notification.

H-6300-1-WILDERNESS INVENTORY MAINTENANCE IN BLM OREGON/WASHINGTON

APPENDIX B – INVENTORY AREA EVALUATION

Year: 2007

Inventory Unit Name/Number: Five Points OR-036-018

FORM 1

DOCUMENTATION OF BLM WILDERNESS INVENTORY FINDINGS ON RECORD:

- 1) **Is there existing BLM wilderness inventory information on all or part of this area?**

Yes X No

A.) Inventory Source(s)

(X) Denotes all applicable BLM inventory files, printed maps, or published BLM Decision documents with information pertaining to this unit.

Wilderness Inventories

- (X) 1978 - *BLM Wilderness Inventory Units OR-03-13-15* (unpublished BLM documents stored in 6-way case files).
- (X) April 1979 - *Proposed Initial Inventory – Roadless Areas and Islands Which Do Not Have Wilderness Characteristics* (yellow book).

Wilderness Decision Documents

- (X) August 1979 - *Wilderness Review – Initial Inventory: Final Decision on Public Lands Obviously Lacking Wilderness Characteristics, Oregon and Washington* (green book).
- () October 1979 - *Wilderness Review – Intensive Inventory: Oregon, Proposed Decision on the Intensive Wilderness Inventory of Selected Areas* (grey book).
- () March 1980 - *Wilderness Review – Intensive Inventory: Final Decisions on 30 Selected Units in Southeast Oregon and Proposed Decisions on Other Intensively Inventoried Units in Oregon and Washington* (orange book).
- () November 1980 - *Wilderness Inventory – Oregon and Washington, Final Intensive Inventory Decisions* (brown book).
- () November 1981 - *Stateline Intensive Wilderness Inventory Final Decision, Oregon, Idaho, Nevada, Utah* (tan pamphlet).

B.) Inventory Unit Name(s)/Number(s)

- BLM unpublished file OR-03-13-15 (1978); Rattlesnake Creek 3-178 (August 1979 – *Wilderness Review – Initial Inventory: Final Decision on Public Lands Obviously Lacking Wilderness Characteristics, Oregon and Washington* [green book]).

C.) Map Name(s)/Number(s)

- ☒ (X) Final Decision – Initial Wilderness Inventory Map August 1979
- ☐ () Proposed Decision Intensive Wilderness Inventory of Selected Areas Map October 1979
- ☐ () Intensive Wilderness Inventory Map March 1980
- ☐ () Intensive Wilderness Inventory, Final Decisions Map November 1980
- ☐ () November 1981 *Stateline Intensive Wilderness Inventory Final Decision, Oregon, Idaho, Nevada, Utah* (tan pamphlet)

D.) BLM District(s)/Field Office(s)

- Vale District/Jordan Resource Area

2) BLM Inventory Findings on Record:

Unit#/Name	Size (acres)	Natural Condition	Outstanding Solitude	Outstanding Primitive & Unconfined Recreation	Supplemental Values
Rattlesnake Creek 3-178	4,515*	NA	NA	NA	NA
Total acres >>	4,515				

*This portion of Rattlesnake Creek unit 3-178 was excluded from further intensive inventory in 1979 because of existing roads forming boundaries of less than 5,000 acres.

FORM 2

DOCUMENTATION OF CURRENT WILDERNESS INVENTORY CONDITIONS:

Inventory Unit Name/Number: Five Points OR-036-018

For this exercise BLM refers to the unit as 2007 Five Points OR-036-018.

1) Is the unit of sufficient size?

Yes ☐ No ☒

The unit is comprised of 4,515 acres and does not meet the size criteria.

Description:

The unit is bounded by BLM road 6357-0-00 on the north and west sides, BLM road 6355-0-A0 on the east side, and BLM road 8300-6-05 on the south side. Refer to map 2007_Five_Points_OR_036_018.pdf for the unit boundary. Unit OR-036-018 is approximately 5 miles diagonally in length and 1.5 miles in width. Topographic relief within the unit ranges from a low of 4,935 feet mean sea level (msl) along Peacock Creek in the central-northern part of the unit to a high of 5,122 feet msl on a small butte near the western boundary. Elevation changes in the unit traversing from north to south or from east to west are gradual and average about 20-40 feet per mile. Approximately 80 percent of the unit forms the headwaters of northern flowing Peacock Creek.

2) Is the unit in a natural condition?

Yes ☐ No ☐ NA ☒

Description:

3) Does the unit have outstanding opportunities for solitude?

Yes ☐ No ☐ NA ☒

Description:

4) Does the unit have outstanding opportunities for primitive and unconfined recreation?

Yes ☐ No ☐ NA ☒

Description:

5) Does the unit have supplemental values?

Yes ☐ No ☐ NA ☒

Description:

With some minor exceptions, the ecological integrity of rangeland in this unit has been largely unaffected by the combined impacts of wildfire and invasive, non-native plants such as cheatgrass. This means the area possesses wildlife habitat supplemental values for sagebrush-dependent species of BLM management importance including pygmy rabbit, sagebrush vole, greater sage-grouse, Brewer's sparrow, black-throated sparrow, sage sparrow, loggerhead shrike, and sage thrasher. Observed rangeland conditions within this unit can be expected to contribute towards the existence of healthy sagebrush-dependent wildlife populations for a large area and

over the long term because: (1) native plant functional and structural groups are well represented within the unit, and (2) wildlife forage, cover, and structure is available for use by species of management importance.

In contrast to conditions described above, rangeland at similar elevations and in similar ecological sites within Malheur County, Oregon has been highly disturbed due to the combined effects of improper historical grazing use, loss of biological crust integrity, invasive plant establishment, and catastrophic wildfire impacts over the last few decades. Cheatgrass presence is known to accelerate and aggravate wildfire spread because it is a highly flammable fine fuel, and wildfire often reduces or completely eliminates critical shrub-based forage, cover, and habitat structure values for many species of wildlife. Literally millions of acres of Wyoming big sagebrush habitat types, similar to those within this unit, have been burned over the last few decades and recovery of these losses will take multiple decades if not centuries to occur.

Finally, the land considered within this unit is also recognized as part of the Owyhee Uplands Physiographic Province, a region incorporating rangeland in Oregon, Idaho, and Nevada which supports some of the largest contiguous blocks of intact sagebrush steppe remaining west of the Continental Divide.

SUMMARY OF FINDINGS AND CONCLUSION:

Inventory Unit Name/Number: Five Points OR-036-018

Summary

Results of Analysis:

- | | | | |
|---|-----|------|------|
| 1) Does the area meet any of the size requirements? | Yes | [No] | |
| 2) Does the area appear to be natural? | Yes | No | [NA] |
| 3) Does the area offer outstanding opportunities for solitude or a primitive and unconfined type of recreation? | Yes | No | [NA] |
| 4) Does the area have supplemental values? | Yes | No | [NA] |

Conclusion

Check One:

() The area, or a portion of the area, has wilderness character.

(X) The area does not have wilderness character.



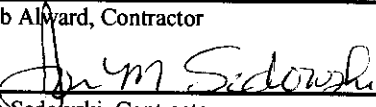
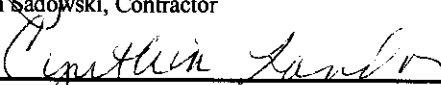
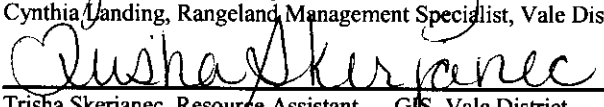
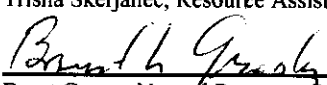
The ID team has reviewed the findings summarized in the original Statewide Wilderness Inventory as well as in the published decision documents and maps identified on Form 1. Current conditions relative to the presence or absence of wilderness characteristics have been considered including citizen wilderness proposals (no citizen proposal covering this unit). Based on all the best available information and staff field visits to the area since 2000, the ID team has found no compelling reasons to change existing BLM decisions about wilderness characteristics.

Sources of Reference for Evaluation:

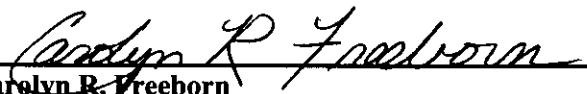
- All BLM documents listed in Form 1; existing BLM wilderness inventory information.
- Wilderness Inventory Recommendations: Vale District, Submitted by Oregon Natural Desert Association (ONDA), February 6, 2004.
- Current geographic information system (GIS) data on existing projects, vehicle routes/roads, land ownership, etc.
- BLM Job Documentation Record (JDR) files.
- National Agriculture Imagery Project digital images (2005).
- Official BLM Transportation Plan Map.
- BLM staff has obtained first-hand field knowledge about this unit's plant communities, road conditions, and other attributes as a result of rangeland health investigations conducted between July and October of the year 2000. BLM gathered quantitative rangeland data from trend plots in support of the assessment and evaluation process for Louse Canyon Geographic Management Area, but most other data collected for rangeland health evaluation purposes were either estimated or qualitative in nature. BLM staff has also visited this and adjoining units annually and on multiple occasions after 2000 in the process of establishing and reading riparian monitoring locations, performing layout and design work for rangeland development projects, conducting rangeland supervision duties, collecting livestock utilization data, and

documenting current road conditions. Field observations were made during Rangeland Standards and Guides assessment work in 2000.

Wilderness Characteristics Interdisciplinary Team:

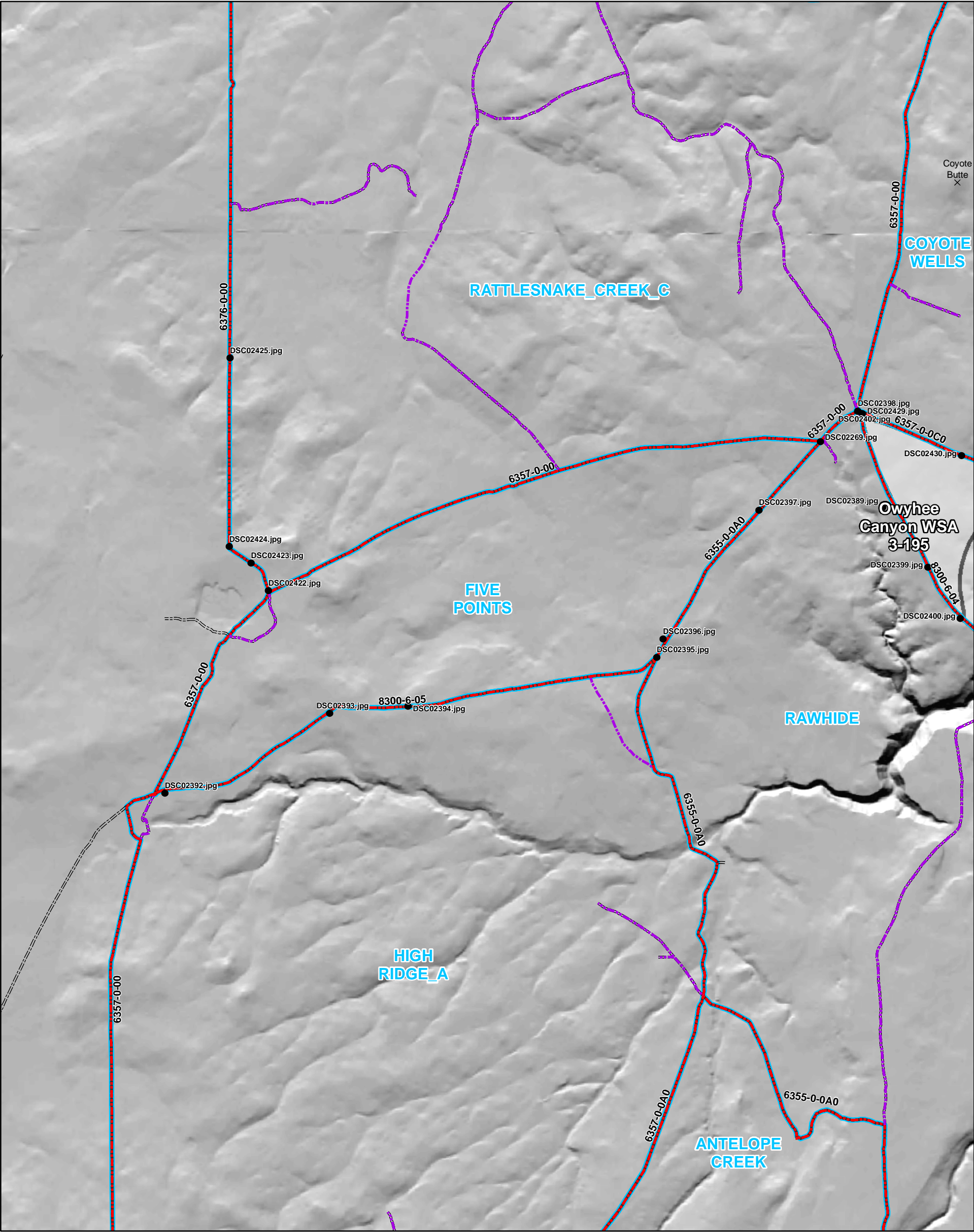
	<u>10/26/07</u>
Jack Wenderoth, Team Lead, Vale District	Date
	<u>10/26/07</u>
Bob Alward, Contractor	Date
	<u>10/26/2007</u>
Jon Sadowski, Contractor	Date
	<u>10-26-07</u>
Cynthia Landing, Rangeland Management Specialist, Vale District	Date
	<u>10/26/07</u>
Trisha Skerjanec, Resource Assistant — GIS, Vale District	Date
	<u>10/26/07</u>
Brent Grasty, Natural Resource Specialist — GIS, Vale District	Date

Concurrence:

	<u>10/26/07</u>
Carolyn R. Freeborn	Date
Field Manager, Jordan R. A.	

This form documents information that constitutes an inventory finding on wilderness characteristics. It does not represent a formal land use allocation or a final agency decision subject to administrative remedies under either 43 CFR parts 4 or 1610.5-2.

FIVE POINTS
OR-036-018
ACRES: 4515

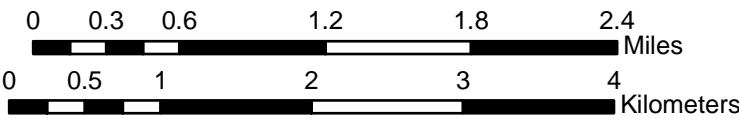


Legend

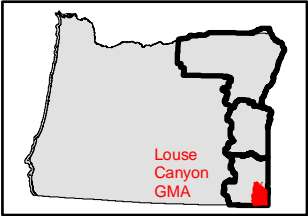
- DSC022291.jpg Photo Points
- Boundary Road
- WSA Shared Bnd
- Primitive Route
- Wilderness Inventory Unit

Land Status

- Private
- Bureau of Land Management
- Wilderness Study Area



1:50,000



U.S. DEPARTMENT OF THE INTERIOR
BUREAU OF LAND MANAGEMENT

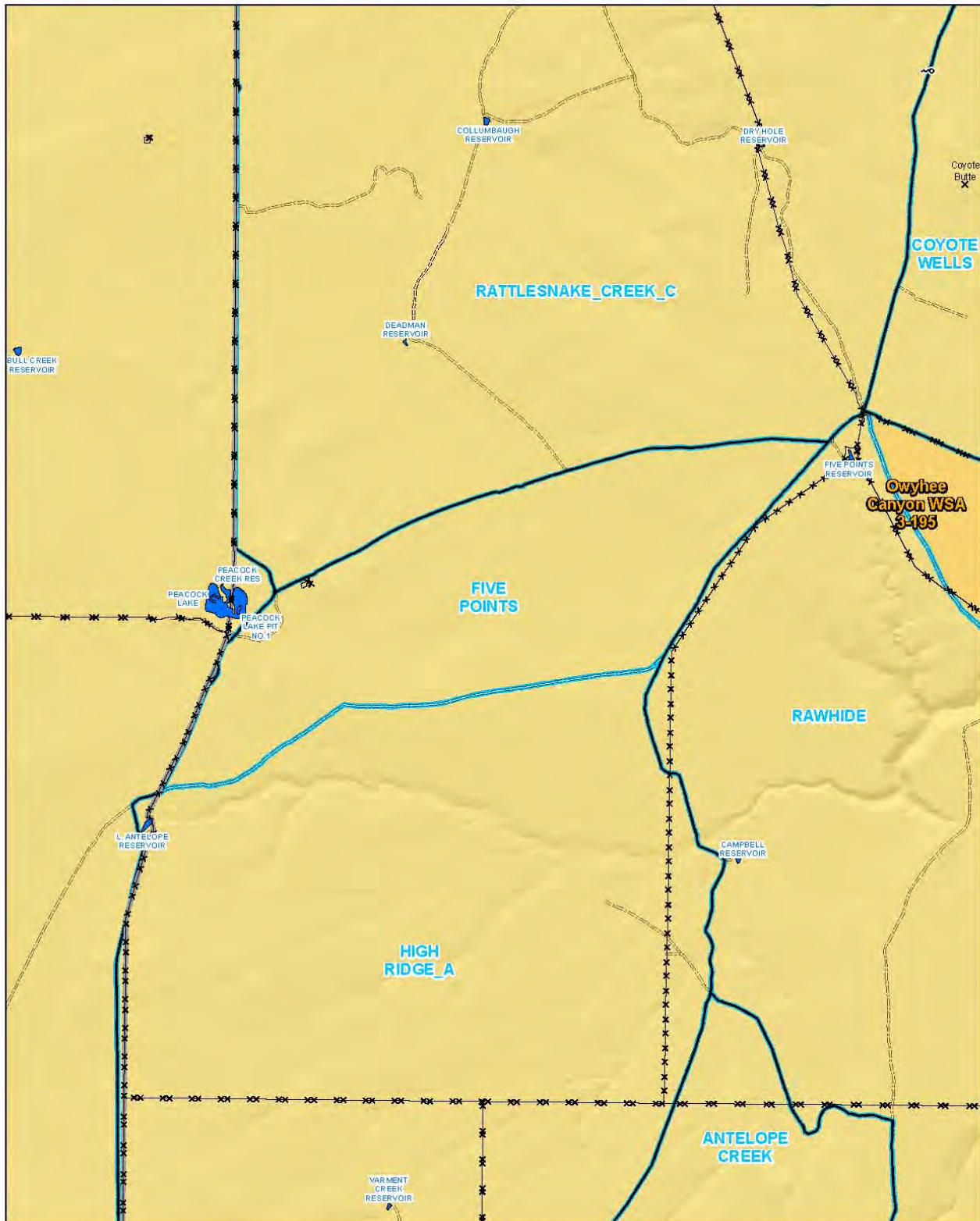


VALE DISTRICT
Louse Canyon
Geographic Management Area
Wilderness Inventory Maintenance

October 26, 2007

No warranty is made by the Bureau of Land Management as to the accuracy, reliability, or completeness of these data for individual or aggregate use with other data. Original data were compiled from various sources. This information may not meet National Map Accuracy Standards. This product was developed through digital means and may be updated without notification.

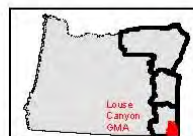
FIVE POINTS
OR-036-018
ACRES: 4515



- Legend**
- Wilderness Inventory Unit
 - Wilderness Study Area
 - BLM Inventory Routes
 - Other Routes
 - Allotments
 - Pasture Boundaries
 - BLM Reservoirs
 - BLM Developed Springs
 - Other Springs
 - Land Status
 - Bureau of Land Management
 - Forest Service
 - Bureau of Indian Affairs
 - Other Federal Lands
 - Private
 - State

0 0.2 0.4 0.8 1.2 1.6 Miles
0 0.35 0.7 1.4 2.1 2.8 Kilometers

1:50,000



U.S. DEPARTMENT OF THE INTERIOR
BUREAU OF LAND MANAGEMENT



VALE DISTRICT

Louse Canyon
Geographic Management Area
Wilderness Inventory Maintenance

October 26, 2007

No warranty is made by the Bureau of Land Management as to the accuracy, reliability, or completeness of these data. Original data were compiled by the Bureau of Land Management. The information may not meet State and Map Accuracy standards. The product was developed through digital means and may be updated without notice.