



U.S. Department of the Interior

**BLM**

Bureau of Land Management

---

# 2002 Northwest Forest Plan Report

*Western Oregon  
and Northern California*





# Introduction

In 1995, the BLM incorporated the Northwest Forest Plan (NWFP) into its land use plans for the six western Oregon districts and three northern California field offices covered by the NWFP. The Northwest Forest Plan guides the management of more than 22 million acres of Federal forests administered by the Bureau of Land Management (BLM) and the U.S. Department of Agriculture Forest Service in western Oregon, western Washington, and northern California. The Northwest Forest Plan was designed to be a balanced, scientifically based, long-term management plan to produce a predictable and sustainable supply of timber, and to protect the health of forests and wildlife. Of the 22 million acres managed under Northwest Forest Plan direction, BLM manages approximately 2.4 million.

The 22 million acres of federal land covered by the Northwest Forest Plan are assigned to one of seven land allocations. Congressional Reserves (30 percent); Late-Successional Reserves (30 percent); Adaptive Management Areas (6 percent); Managed Late-Successional Areas (1 percent); Administratively Withdrawn Areas (6 percent); Riparian Reserves (11 percent); and Matrix (16 percent). It is important to note that of the 22 million acres of land within the Northwest Forest Plan, only 22 percent, or 5,497,100 acres are available for harvest.

The BLM Districts in western Oregon implementing the Northwest Forest Plan are: Salem, Eugene, Roseburg, Coos Bay, Medford, and the Lakeview District's Klamath Falls Resource Area. In Northern California, the BLM Field Offices implementing the Northwest Forest Plan are Alturas, Arcata, Clear Lake, and Redding.

## Healthy Forests – An Initiative for Wildfire Prevention and Stronger Communities

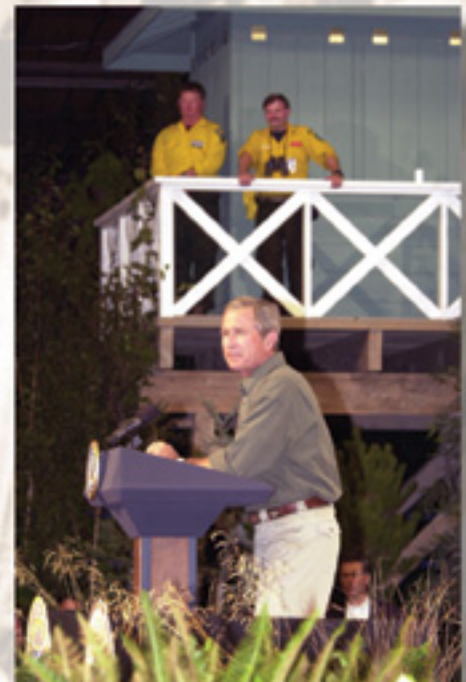
On August 22, 2002, President George W. Bush along with Interior Secretary Gale Norton, Agriculture Secretary Ann Veneman, BLM Director Kathleen Clarke, and Oregon/Washington State Director Elaine Brong toured the Squires Fire in the BLM's Medford District. The tour highlighted the need to conduct forest



thinnings, fuels reduction, and other forest health projects. At the Jackson County Fairgrounds, President Bush thanked firefighters and highlighted the need for healthy forests. At the culmination of the day, President Bush chose southwestern Oregon as the location to announce his plan: "Healthy Forests – An Initiative for Wildfire Prevention and Stronger Communities."

The initiative will:

1. Significantly step up efforts to prevent the damage caused by catastrophic wildfires by reducing unnecessary regulatory obstacles that hinder active forest management;
2. Work with Congress to pass legislation that addresses the unhealthy forest crisis by expediting procedures for forest thinning and restoration projects; and,
3. Fulfill the promise of the 1994 Northwest Forest Plan to ensure the sustainable forest management and appropriate timber production.



## Forestry



The BLM manages 2.4 million acres of land in western Oregon - lands that are managed under the standards and guidelines of the Northwest Forest Plan. Approximately 500,000 acres (or 22 percent of the BLM western Oregon land base) are available for timber harvest. In Fiscal Year 2002 the BLM in western Oregon offered 162.6 million board feet (MMBF).



The BLM reforests forest lands after timber harvest and natural disturbances such as wildland fires. Each District and Field Office conducts site preparation, tree planting and fertilization, ensuring healthy forests in the future.

Recent studies show a sound scientific basis for proceeding with thinning of young dense stands in order to enhance and accelerate some of these forest stands' movement toward old-growth characteristics. This research now indicates that without thinning in certain stands, it may take longer, (up to several hundred years), before these areas develop old-growth characteristics.



## Recreation

In Fiscal Year 2002, recreation sites in western Oregon continued to participate in the national Pilot Fee Demonstration program. Fees collected through this program are invested in maintenance and visitor services at the site where fees are collected. Camping, fishing, rafting and biking are some of the many recreational opportunities offered on BLM public lands. In Fiscal Year 2002, the total recreation-related revenue generated was \$2,006,169. This figure includes fee demo site-specific revenues.



## Survey and Manage

The newly revised standards and guidelines of the 2001 Survey and Manage Record of Decision (ROD) guided accomplishments for 2002. The Annual Species Review results were announced in June 2002, releasing 37 species from Survey and Manage provisions in all or parts of their ranges. The designation of non-High Priority Sites and release of known sites from management were prepared for six field units according to 2001 ROD standard and guidelines.

Strategic survey actions continued during FY2002 with random grid surveys, purposive surveys, known site surveys and species research. Random grid surveys collect species occurrence data on fixed plots across the Northwest Forest Plan landscape in reserve and matrix lands were approximately 85% complete at the end of FY2002. Many Survey and Manage program products rely on information collected through strategic surveys, such as new and revised Management Recommendations, Pre-Disturbance Survey Protocols, habitat models, and the Strategic Survey Implementation Guide, which identifies species information needs and survey priorities.

In addition, Special Management Recommendations designed to accommodate the needs of species while accommodating fuels treatments in accordance with the objectives of the National Fire Plan were drafted for all Survey and Manage Species. The Survey and Manage Annual Status Report, which chronicles the accomplishments of the program was published earlier this year.

### **Supplemental Environmental Impact Statement**

As a result of a settlement agreement with plaintiffs in a lawsuit over the Survey and Manage component, the BLM and the USDA Forest Service have begun work on a supplemental environmental impact statement (SEIS) regarding the survey and manage aspect of the Northwest Forest Plan.

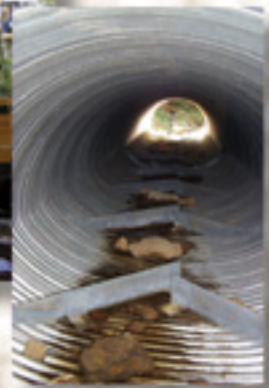
The SEIS would amend land and resource management plans for National Forests and BLM Districts within the range of the northern spotted owl -- generally western Oregon and western Washington, and northwestern California.

The agencies are currently in the process of collecting scoping comments on this proposal to prepare a supplemental environmental impact statement. Comments are sought that will help the agencies identify issues to be addressed in the SEIS and identify interested and affected persons. Preliminary issues identified include: the cost of implementing the Survey and Manage program, its effect on other Agency programs and priorities, and whether the proposed action meets all applicable laws and regulations including California Lands Act of 1937, the Federal Land Policy and Act, the National Forest Management Act, the Endangered and their implementing regulations.

the Oregon and Management Species Act,

## Jobs-In-The Woods

Riparian planting, hazardous fuels reduction, and stream restoration are just some of the habitat and forest restoration activities funded through the Jobs-in-the-Woods program. In Fiscal Year 2002, the BLM utilized \$6.24 million in Congressional funding to accomplish 156 restoration projects, creating jobs for displaced workers.



## Other Issues

### Resource Advisory Committees in Western Oregon

The Secure Rural Schools and Community Self-Determination Act of 2000 (the Act) established a five year payment schedule to local counties in lieu of funds derived from the harvest of timber on federal lands. The Act created a mechanism for local community collaboration with BLM and the USDA Forest Service to support projects on federal lands or on private lands that benefit resources on federal lands. In accordance with Section 205 provisions of the Act Oregon/Washington BLM has chartered Resource Advisory Committees for the five western Oregon BLM Districts that contain Oregon and California Railroad grant lands and reconveyed Coos Bay Wagon Road grant lands (Coos Bay, Eugene, Medford, Roseburg, and Salem).

The five BLM Resource Advisory Committees have met and reviewed numerous project proposals developed by other agencies, counties and local governments, as well as private and non-profit entities, with estimated project costs ranging from \$20,000 to \$600,000. The project types which have been recommended include road, trail, and infrastructure maintenance, soil productivity improvement, improvements in forest ecosystem health, watershed restoration and maintenance, restoration and improvement of wildlife and fish habitat, control of noxious and exotic weeds, and the reestablishment of native species.

### National Fire Plan

The American people, their property, and our environment, particularly the forests and rangelands of the West, are threatened by catastrophic fires and environmental degradation. Renewed efforts, such as the President's Healthy Forest Initiative and its relationship to the Northwest Forest Plan and the National Fire Plan, will help to restore our public lands to healthy conditions.

In particular, the National Fire Plan laid the foundation for a long-term program of work to reduce fire risk and restore healthy fire-adapted ecosystems in the Nation's forests and



rangelands. The multifaceted nature and scope of the issues and jurisdictions involved requires new approaches, with open collaboration among a wide variety of stakeholders. Implementation of the National Fire Plan continued to improve firefighting resources, reduce wildfire hazards, and fund local community projects to reduce the potential for losses from wildland fires.

Federal agencies and the states are working together to build effective community protection programs in Oregon and Washington. Through the interagency grants process, over \$23 million in grants were awarded to over 380 recipients. These grants leveraged over \$26 million in project activities. The agencies are accelerating the removal of live and dead vegetative fuel through the use of prescribed fire, mechanical treatment, and other methods. In Fiscal Year 2001, National Fire Plan dollars resulted in 166,171 acres of hazardous fuels treated in Oregon, and 41,457 acres in Washington.

Using National Fire Plan funding, over 1,100 new firefighters were hired in the Pacific Northwest in Fiscal Year 2001. The agencies also awarded National Fire Plan contract funds through 295 contracts to local businesses, tribes, and organizations to benefit local fire fighting efforts. These contracts infused approximately \$20 million of federal funds into local communities throughout Oregon and Washington.

Finally, using National Fire Plan funds, 65 restoration and rehabilitation projects were completed in Oregon and 11 were completed in Washington. Combined, these projects totaled 312,756 acres.

## Looking Ahead

The BLM will work together with other federal and state agencies, communities, and others to identify ways to solve problems associated with the Northwest Forest Plan to make sure it delivers on its original promise to protect habitat and to provide a stable supply of forest products.

Since the Northwest Forest Plan's inception, the BLM has worked closely with the USDA Forest Service, the Fish and Wildlife Service, the National Marine Fisheries Service and others to develop administrative remedies to better



implement the Plan and to streamline processes. In keeping with Secretary of the Interior Gale Norton's philosophy of involving elected officials, local communities,

stakeholders, and interested parties to resolve complex problems, the BLM will be working with all parties to ensure a fair and reasonable solution to the problems that we currently face in our Nation's forests.

- Oregon State Office:** (503) 808-6001  
333 S.W. 1st Ave. (97204), P.O. Box 2965  
Portland, OR 97208 - <http://www.or.blm.gov>
- Salem District:** (503) 375-5646  
1717 Fabry Road, S.E., Salem, OR 97306
- Eugene District:** (541) 683-6600  
2890 Chad Drive, P.O. Box 10226, Eugene, OR 97440
- Roseburg District:** (541) 440-4930  
777 N.W. Garden Valley Blvd., Roseburg, OR 97470
- Coos Bay District:** (541) 756-0100  
1300 Airport Lane, North Bend, OR 97459-2000
- Medford District:** (541) 618-2200  
3040 Biddle Road, Medford, OR 97504
- Lakeview District:** (541) 947-2177  
Klamath Falls Resource Area: (541) 883-6916  
2795 Anderson Avenue, Bldg. 25, Klamath Falls, OR 97603-7891
- California State Office:** (916) 978-4400  
2800 Cottage Way, Sacramento, CA 95825  
<http://www.ca.blm.gov>
- Alturas Field Office:** (530) 233-4666  
708 W. 12th Street, Alturas, CA 96101
- Arcata Field Office:** (707) 825-2300  
1695 Heindon Road, Arcata, CA 95521-4573
- Clear Lake Field Office:** (707) 468-4000  
2550 North State Street, Ukiah, CA 95482-3023
- Redding Field Office:** (530) 224-2100  
355 Hemsted Drive, Redding, CA 96002

**The Bureau of Land Management Today**

**Our Vision** To enhance the quality of life for all citizens through the balanced stewardship of America's public lands and resources.

**Our Mission** To ensure the health, diversity and productivity of the public lands for present and generations through conservation, protection, and wise use.

**Our Values** To serve with honesty, integrity, accountability, respect, courage and commitment to public officials.

**Our Priorities** To improve the health and productivity of the land to support the BLM multiple-use mission.

To enhance community-based conservation, increase accountability, and promote transparency through consultation, cooperation, and collaboration.

To support other employees and volunteers, bring their knowledge and experience to bear on the BLM multiple-use mission.

To provide excellent customer service, respond to accountability, to our stakeholders, and deliver better services to our resources.

# 2002 Northwest Forest Plan Report Data

2002 O&C Appropriated Dollars

## Forest Management -- \$23,566,000

Design and administer timber sales; monitor ecological trends, impacts, and effectiveness of management of the ecosystem; ensure compliance with federal and state laws and regulations; support the research, protection, and management of habitat for wildlife species; assist development and implementation of recovery plans for threatened and endangered species; implement best management practices on watersheds.

## Reforestation and Forest Development -- \$25,028,000

Maintain sustainability of forest resources and timber harvest levels through successful reforestation, utilizing site preparation, tree planting, young stand maintenance and protection, genetic tree trait conservation, and growth enhancing and forest health practices; develop site specific and watershed level prescriptions using silvicultural techniques; maintain up-to-date inventories of sites available for reforestation and forest development.

## Other Forest Resources Management -- \$36,082,000

including Watershed Analysis, Wildlife Habitat and Fisheries Management. Conduct watershed analysis; comply with Clean Water Act; use smoke management to comply with air quality rules; monitor Threatened and Endangered species, develop protocols for and conduct field inventories of more than 400 Survey and Manage species.

## Transportation and Facilities Maintenance -- \$10,919,000

Maintain 300 buildings and 104 recreation sites. Maintain 14,000 miles of roads, 353 bridges and thousands of culverts in Western Oregon (roads, trails, airstrips).

## Planning -- \$1,158,000

Maintain viability of resource management plans (RMP) through plan monitoring, incorporation of new data and amendments to the RMPs.

## Data System Operation and Management -- \$2,194,000

Convert existing Geographic Information System (GIS) data from Map Overlay and Statistical System to commercial software; operation of the data system at each BLM Western Oregon district office.

## Construction and Acquisition -- \$294,000

Access easements across private land to allow management of federal lands, and for construction of roads, bridges, buildings and other facilities.

## Jobs-in-the-Woods -- \$5,806,000

Hire displaced timber workers, provide training, and assist communities while accomplishing watershed restoration.

## Total \$105,047,000

### BLM FISCAL YEAR 2002 TIMBER SALE INFORMATION

BLM District	Total Volume Offered (MMBF)	Total Volume Harvested (MMBF)
Lakeview	8.2	3.5
Salem	28.1	12.1
Eugene	14.5	9.5
Roseburg	12.5	1.4
Medford	83.1	23.9
Coos Bay	16.2	10.6
<b>Oregon Total</b>	<b>162.6</b>	<b>61.0</b>
Northern California	0.04	0.04
<b>Total</b>	<b>162.64</b>	<b>61.04</b>

### BLM TREE PLANTING IN FISCAL YEAR 2002

BLM District	Acres of Trees Planted (Acres)	Seedlings Planted
Lakeview	0	0
Salem	700	335,300
Eugene	243	109,836
Roseburg	251	134,536
Medford	1,262	478,872
Coos Bay	334	179,692
<b>Oregon Total</b>	<b>2,790</b>	<b>1,238,236</b>
Northern California	20	10,000
<b>Total</b>	<b>2,810</b>	<b>1,248,236</b>