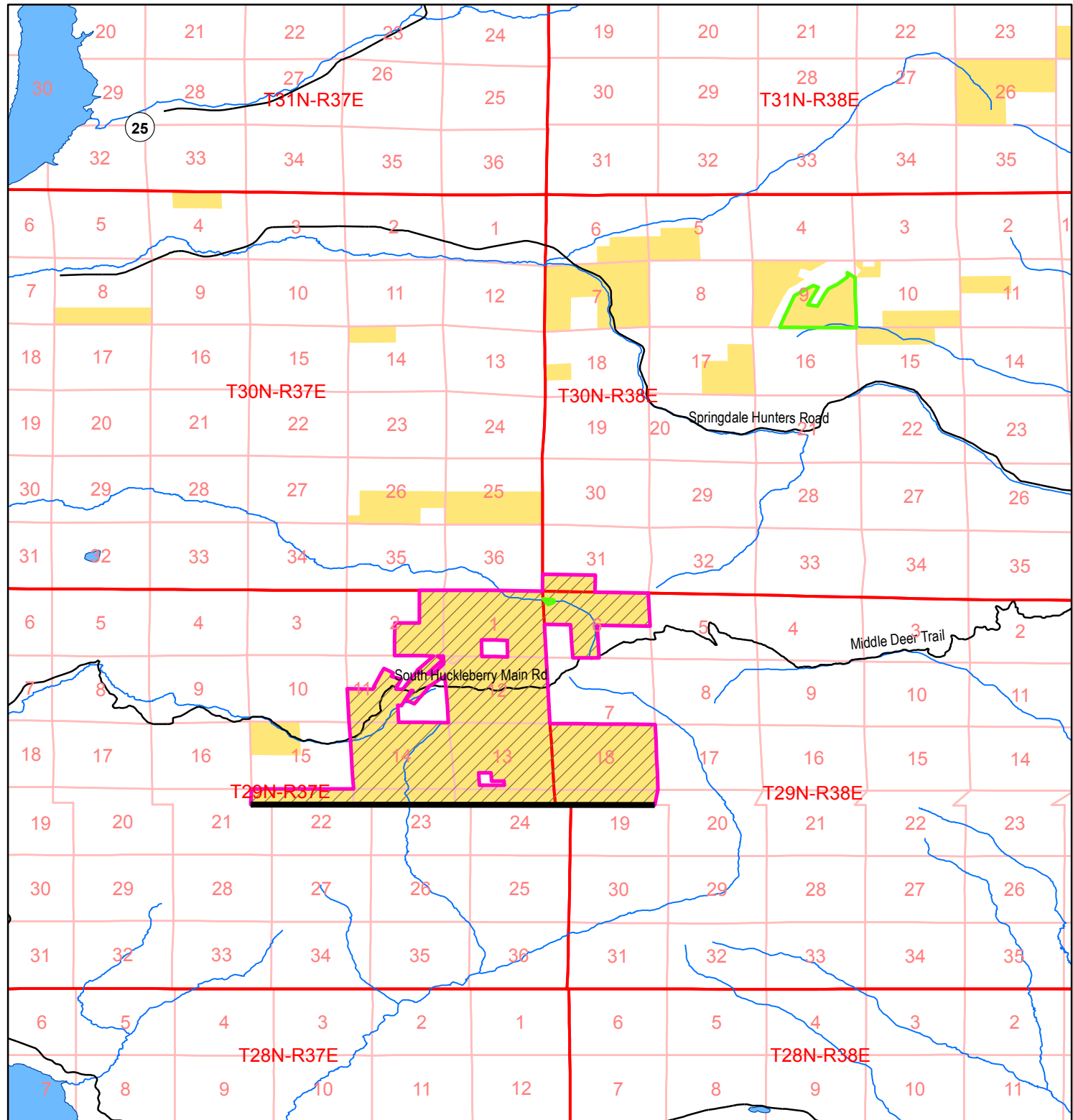




Carpenter Road Fire ESR Plan

Legend

-  Tree Removal/Road Maintenance
-  Existing Fence Repair (4 miles)
-  Weed Control Treatment Area
-  Ground Seeding
-  Interstate Highway
-  Major road
-  Minor road
-  Trail
-  Major Water Body
-  Major Stream
-  Bureau of Land Management



United States Department of the Interior
 Bureau of Land Management
 Spokane District Office
 1103 N. Fancher
 Spokane, WA 99212

No warranty is made by the Bureau of Land Management as to the accuracy, reliability, or completeness of these data for individual or aggregate use with other data. Original data were compiled from various sources. This information may not meet National Map Accuracy Standards. This product was developed through digital means and may be updated without notification.

