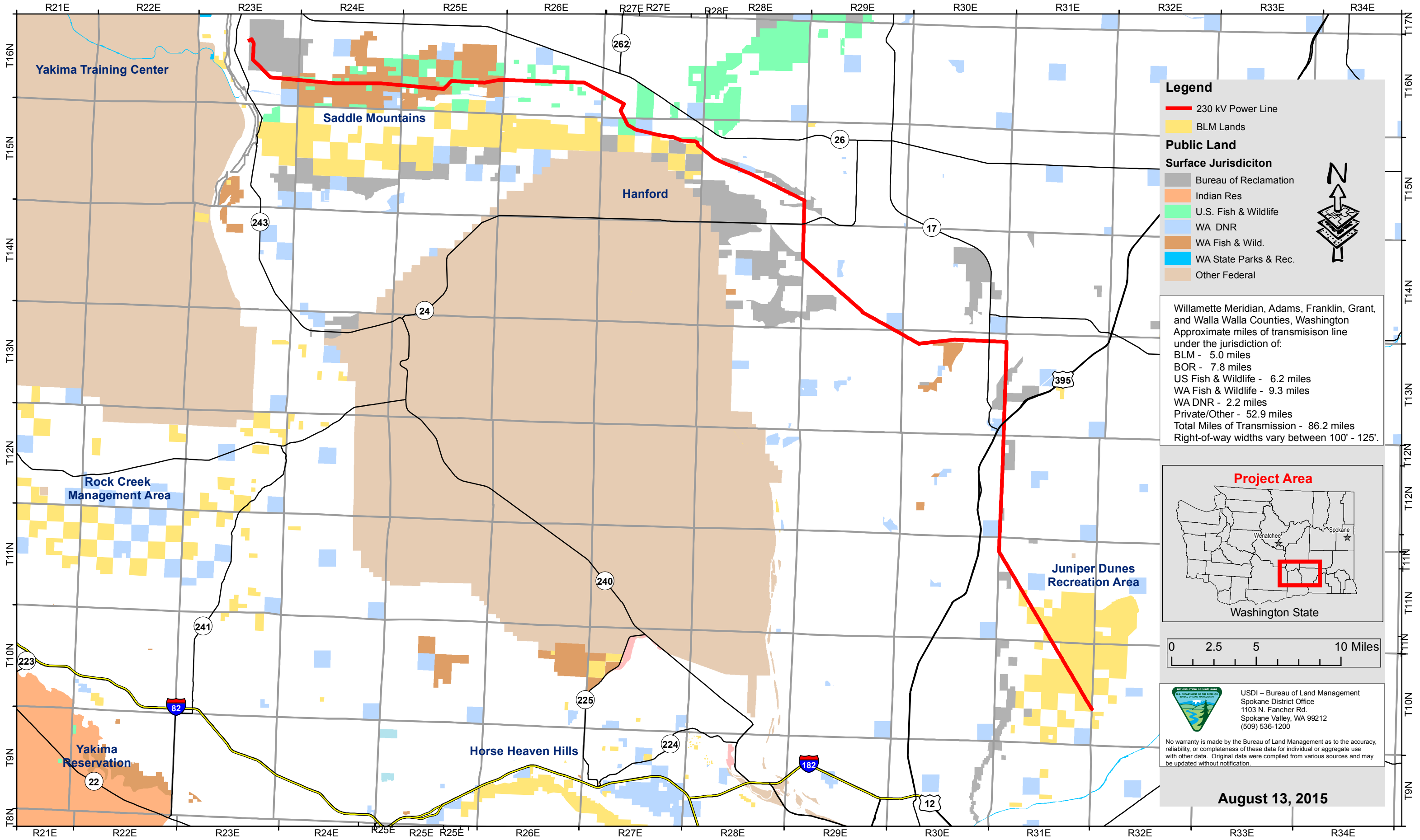


Exhibit A - Main

WAOR 68394 Avista Corp. Aerial 230 kV Transmission Line



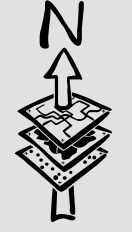
Legend

- 230 kV Power Line
- BLM Lands

Public Land

Surface Jurisdiction

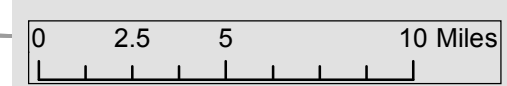
- Bureau of Reclamation
- Indian Res
- U.S. Fish & Wildlife
- WA DNR
- WA Fish & Wild.
- WA State Parks & Rec.
- Other Federal



Willamette Meridian, Adams, Franklin, Grant, and Walla Walla Counties, Washington
 Approximate miles of transmission line under the jurisdiction of:

- BLM - 5.0 miles
- BOR - 7.8 miles
- US Fish & Wildlife - 6.2 miles
- WA Fish & Wildlife - 9.3 miles
- WA DNR - 2.2 miles
- Private/Other - 52.9 miles
- Total Miles of Transmission - 86.2 miles**

Right-of-way widths vary between 100' - 125'.



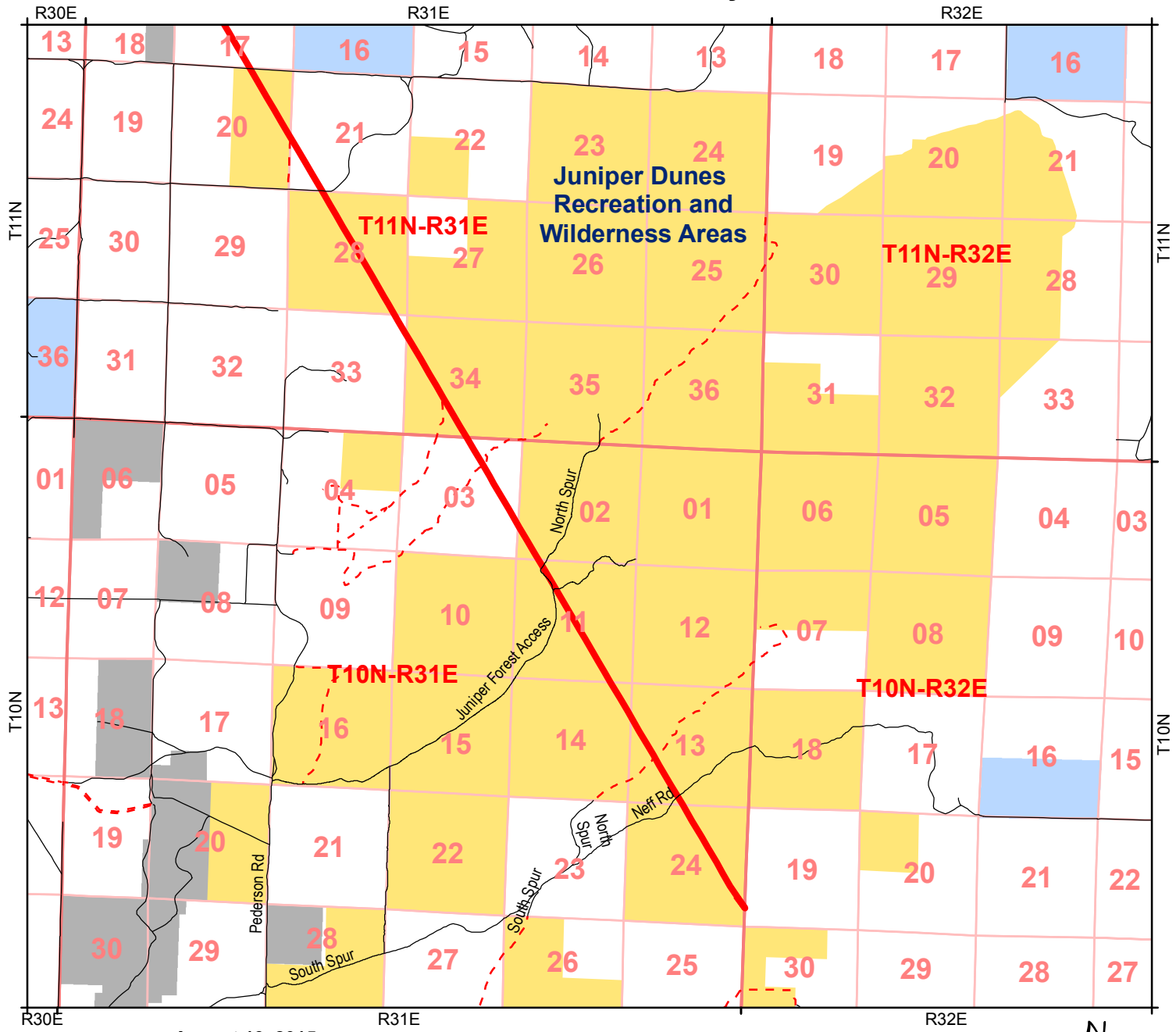
USDI - Bureau of Land Management
 Spokane District Office
 1103 N. Fancher Rd.
 Spokane Valley, WA 99212
 (509) 536-1200

No warranty is made by the Bureau of Land Management as to the accuracy, reliability, or completeness of these data for individual or aggregate use with other data. Original data were compiled from various sources and may be updated without notification.

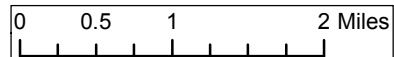
August 13, 2015

Exhibit A - 1

WAOR 68394 Avista Corp. Aerial 230 kV Transmission Line Parcels in Franklin County, WA



August 13, 2015



Willamette Meridian, Franklin County, Washington
 T. 10 N., R. 31 E., sec. 2, SW $\frac{1}{4}$ SW $\frac{1}{4}$;
 T. 10 N., R. 31 E., sec. 14, E $\frac{1}{2}$ NE $\frac{1}{4}$;
 T. 10 N., R. 31 E., sec. 24, NE $\frac{1}{4}$ NW $\frac{1}{4}$, E $\frac{1}{2}$;
 T. 11 N., R. 31 E., sec. 20, E $\frac{1}{2}$;
 T. 11 N., R. 31 E., sec. 28, SW $\frac{1}{4}$ NE $\frac{1}{4}$, E $\frac{1}{2}$ NW $\frac{1}{4}$, W $\frac{1}{2}$ SE $\frac{1}{4}$, and SE $\frac{1}{4}$ SE $\frac{1}{4}$;
 T. 11 N., R. 31 E., sec. 34, W $\frac{1}{2}$ NW $\frac{1}{4}$, N $\frac{1}{2}$ SW $\frac{1}{4}$, SE $\frac{1}{4}$ SW $\frac{1}{4}$, and SW $\frac{1}{4}$ SE $\frac{1}{4}$.
 Approximately 24,327' long, 100' wide for 55.9 Acres.



USDI – Bureau of Land Management
 Spokane District Office
 1103 N. Fancher Rd.
 Spokane Valley, WA 99212
 (509) 536-1200

No warranty is made by the Bureau of Land Management as to the accuracy, reliability, or completeness of these data for individual or aggregate use with other data. Original data were compiled from various sources and may be updated without notification.

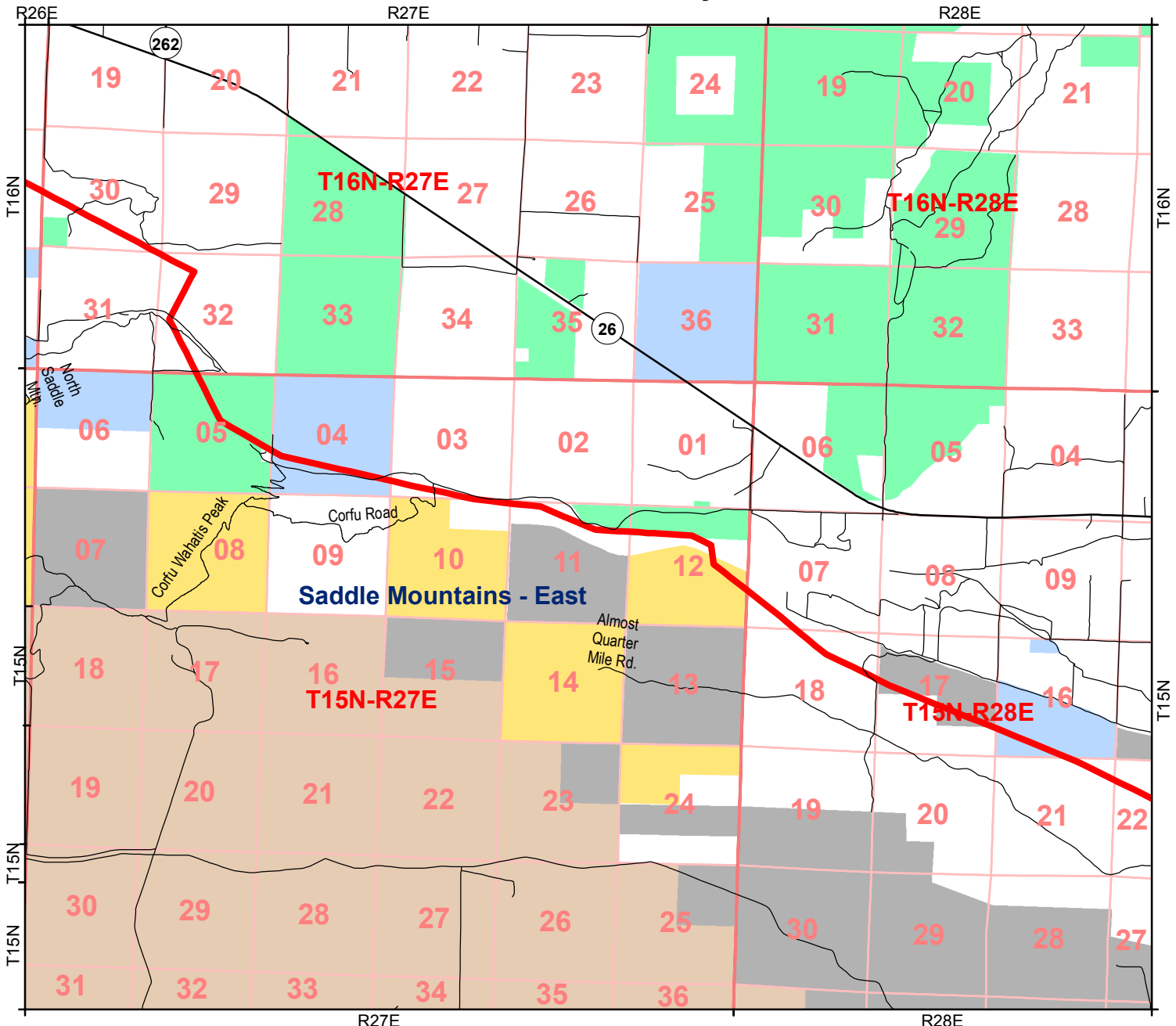
Legend

- 230 kV Power Line
- BLM Lands
- Bureau of Reclamation
- WA DNR

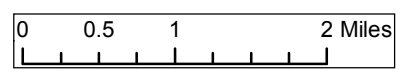


Exhibit A - 2

WAOR 68394 Avista Corp. Aerial 230 kV Transmission Line Parcel in Grant County, WA



August 13, 2015



Willamette Meridian, Grant County, Washington
T. 15 N., R. 27 E., sec. 12, S $\frac{1}{2}$ NE $\frac{1}{4}$, N $\frac{1}{2}$ SE $\frac{1}{4}$.
Approximately 2,277' long, 100' wide for 5.2 Acres.



USDI – Bureau of Land Management
Spokane District Office
1103 N. Fancher Rd.
Spokane Valley, WA 99212
(509) 536-1200

No warranty is made by the Bureau of Land Management as to the accuracy, reliability, or completeness of these data for individual or aggregate use with other data. Original data were compiled from various sources and may be updated without notification.

Legend

- 230 kV Power Line
- BLM Lands
- Bureau of Reclamation
- U.S. Fish & Wildlife
- WA DNR
- Other Federal

