

Bureau of Land Management Salem District Project Update

Fall 2012

BLM
Salem District



As the Nation's principal conservation agency, the Department of Interior has responsibility for most of our nationally owned public lands and natural resources. This includes fostering economic use of our land and water resources, protecting our fish and wildlife, preserving the environmental and cultural values of our national parks and historical places, and providing for the enjoyment of life through outdoor recreation. The Department assesses our energy and mineral resources and works to assure that their development is in the best interest of all people. The Department also has a major responsibility for American Indian reservation communities and for people who live in Island Territories under U.S. administration.



United States Department of the Interior

BUREAU OF LAND MANAGEMENT

Salem District Office
1717 Fabry Road S.E.
Salem, Oregon 97306



Dear Public Land User:

Welcome to the Fall 2012 edition of the Salem District's *Planning Update*. The purpose of our publication is to provide you with information on proposed and ongoing activities on lands administered by the Bureau of Land Management (BLM) within the Salem District.

I am seeking comments and ideas from those who may be affected by our multiple-use management programs. My intent is to increase the public's awareness of BLM issues, activities, opportunities and get your feedback as to whether we missed any issues as the District moves forward with project planning. Your opinions and suggestions are appreciated and very important to us. They help us make informed decisions, sound land management actions and improve our projects.

On May 16, 2012, in the District Court for Western Oregon, U.S. District Judge Anna Brown issued an order vacating the 2008 Records of Decision for the Western Oregon Plan Revisions, reinstating the 1995 resource management plans as amended prior to December 30, 2008. The Salem District will design projects to conform and be consistent with the goals and objectives of the 1995 Salem District Resource Management Plan.

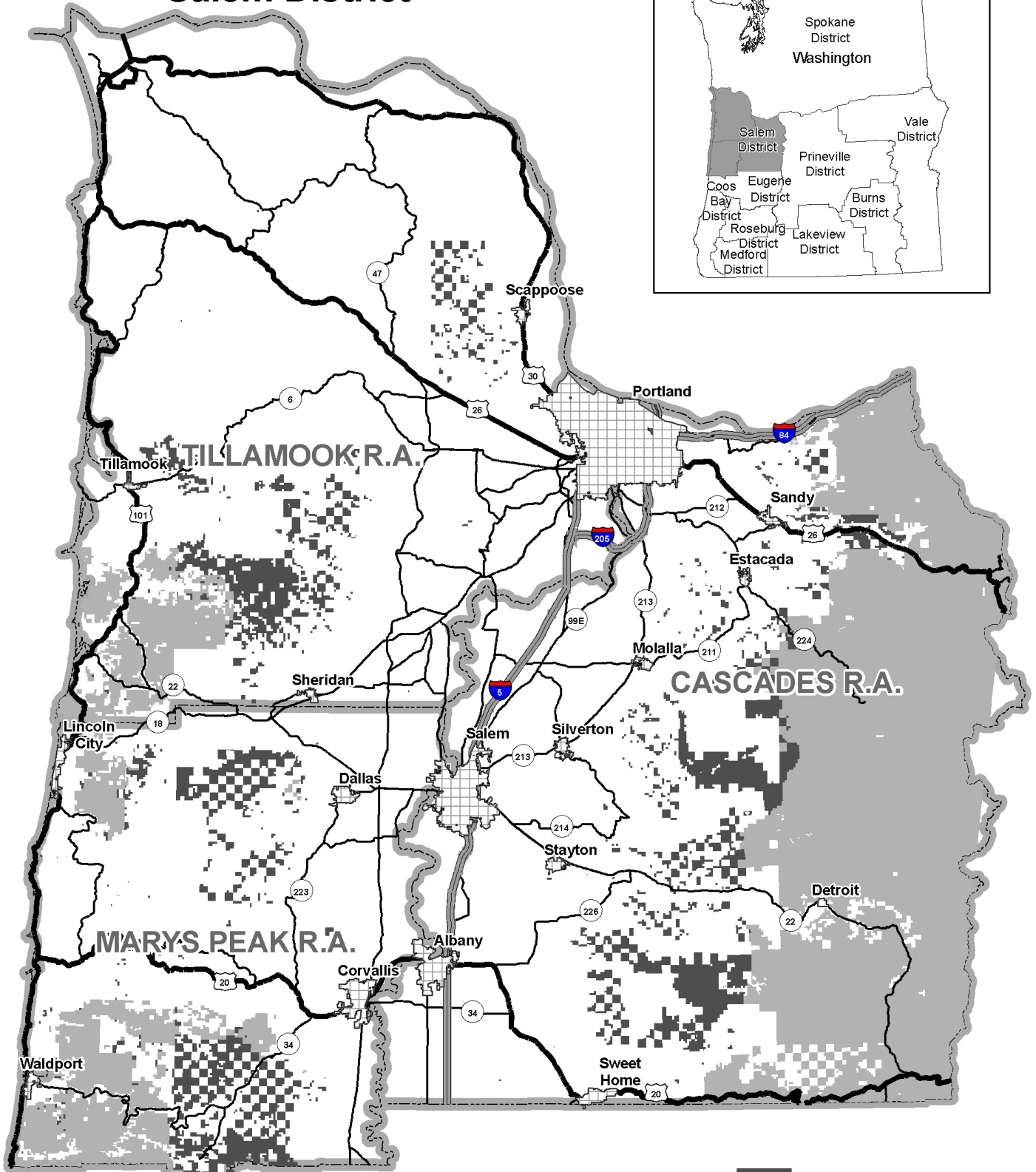
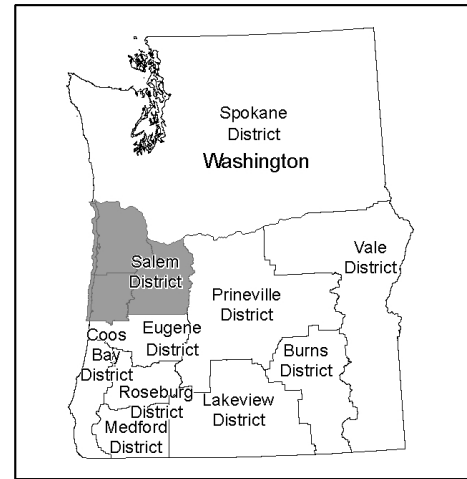
With publication of a Notice of Intent in the Federal Register, on March 9, 2012, the BLM began the process of revising resource management plans for the Salem, Eugene, Roseburg, Coos Bay, and Medford Districts, and the Klamath Falls Resource Area of the Lakeview District. Completion of this planning effort is anticipated in 2015.




Your comments and concerns are welcome and may influence the final decision on these projects. Thank you for your continued interest!

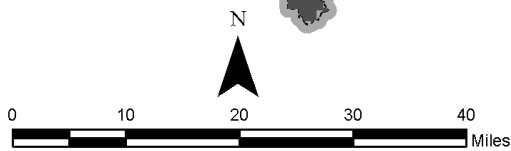
Sincerely,

Kim M. Titus
Salem District Manager

Bureau of Land Management Salem District



-  BLM Administered Lands
-  US Forest Service Lands
-  Resource Area Boundary



**Current projects are described in Tables 1 – 4.
Fiscal Year 2012 and 2013 timber sales are described in Table 5.**

Projects started and completed between editions of this document have gone through the full analysis process. Legal notices published provide details on public involvement and the public comment process for these projects.

Explanatory comments concerning Tables 1–4:

Projects are organized by project type, project name/description, location, planning status, and contact person. A project may include the following stages:

Developing Proposed Action – A site-specific proposal, called a proposed action, is developed to move the existing condition of an area towards a desired condition or result.

Scoping – Public comment is sought on the proposed action. Comments are used to refine the proposal, or to identify issues which will define the scope of analysis and alternatives to be considered.

Developing Alternatives – A range of alternatives is developed based on the issues raised during scoping, while addressing the purpose and need for the project.

Environmental Effects – The effects of implementing the alternative(s) are described and documented in an EA (Environmental Assessment), CX (Categorical Exclusion), or DNA (Determination of NEPA Adequacy).

Comment Period – Comment periods are established commensurate with the anticipated level of public interest and traditionally, not always provide 30 days for an EA, and FONSI (Finding of No Significant Impact). There are no established comment periods for a CX or DNA.

Please send written comments, including the specific project name, to the appropriate address listed below during the identified public comment period.

FOR MORE INFORMATION CONTACT:

Bureau of Land Management
Salem District Office
1717 Fabry Road SE
Salem, OR 97306
(503) 375-5646
OPEN: 7:45 a.m. - 4:30 p.m.
Monday - Friday

Bureau of Land Management
Tillamook Resource Area
4610 Third Street
Tillamook, OR 97141
(503) 815-1100
OPEN: 7:45 a.m. - 4:30 p.m.
Monday - Friday

Please contact us if you no longer wish to receive a paper copy of the *Planning Update*.

A copy of this document is available at your local public library and is also available on the internet at: <http://www.blm.gov/or/districts/salem/plans/index.php>

Abbreviations and Definitions

AMA (Adaptive Management Area): One of the federal land use allocations set forth in the Salem District Resource Management Plan. The objective of this land use allocation is to develop and test new management approaches to integrate and achieve ecological and economic health, and other social objectives.

AMR (Adaptive Management Reserve): One of the federal land use allocations set forth in the Salem District Resource Management Plan. An AMR is a late successional reserve within an adaptive management area. See AMA and LSR

Activity Planning/ APU (Activity Planning Unit): Activity planning is an internal planning process that identifies a number of potential projects which if implemented would move the resources within the area toward a desired future condition. An APU or activity planning unit is the landscape unit, generally a sub-watershed basin, analyzed in the Activity planning process.

Commercial Thinning: Thinning a forest stand to increase the proportion of merchantable volume in the stand, to produce larger, more valuable logs, to anticipate mortality of small trees as the stand develops, to maintain good crown ratios and stable, wind-firm trees, to accelerate development of trees which can later provide large-diameter snags and down logs, or to manage species composition. Specific objectives would vary by land use allocation.

CON (Connectivity /Diversity Blocks): One of the federal land use allocations set forth in the Salem District Resource Management Plan. The objective of this land use allocation is to maintain 25-30% of each block in late-successional forest at any point in time and schedule harvest on a 150 year rotation.

CX (Categorical Exclusion): A category of actions (identified in agency guidance) that do not have a significant effect on the human environment and for which neither an environmental assessment nor an environmental impact statement is required.

Density Management: Thinning a forest stand to reduce tree densities to promote development of late-successional forest structure and to encourage rapid development of vertical and horizontal stand diversity. Density management would generally be applied to stands which are predominantly even-aged, evenly spaced, and of a fairly uniform diameter and height. Specific objectives would vary by land use allocation.

DNA (Determination of NEPA Adequacy): An interim step in the BLM's internal analysis process that concludes that a proposed action is adequately analyzed in an existing NEPA document (an EIS or EA). Where applicable, the determination also addresses conformance with an approved land use plan.

DR (Decision Rationale or Decision Record): The BLM document associated with an EA that describes the action to be taken when the analysis supports a finding of no significant impact.

EA (Environmental Assessment): A public document that provides sufficient evidence and analysis to determine whether a federal undertaking would significantly affect the environment. If the answer is no, the agency issues a finding of no significant impact (FONSI).

Table 3: Tillamook Resource Area Proposed Projects

Name / Description of Project	Location	Planning Status	Contact
Vegetation Management Actions (Additional vegetation management actions are described under the Multiple Projects heading)			
Bible Creek Roadside Alder Removal (DOI-BLM-OR-S060-2011-0004-CX): The proposed project is to remove through commercial sale 24 acres of approximately 50-year-old roadside red alder timber adjacent to 6.4 miles of Bible Creek Road. Lands are in the Adaptive Management Area, Late Successional Reserve and Riparian Reserve land use allocations.	T.4S., R.7W., sections 21, 17, and 8; within 30' of Bible Creek Road. Nestucca River Watershed, Tillamook County	CX to be completed Winter 2012.	Eric Neal (503) 815-1461
Walker Creek Projects (DOI-BLM-OR-S060-2011-0012-EA): The projects being considered include commercial thinning, underplanting, road stabilization and decommissioning, coarse woody debris creation, and meadow restoration. Lands are within the Adaptive Management Area, Late Successional Reserve, and Riparian Reserve land use allocations.	Nestucca River Watershed, Walker Creek and Bald Mtn. Fork drainages, Tillamook and Yamhill Counties.	EA to be completed Winter 2012.	Andy Pampush (503) 815-1143
Multiple Projects			
None			
Recreation Actions			
Process Requests (EA/CX/DNA): For various actions such as special use permits.	Tillamook Resource Area-wide.	Ongoing	Debra Drake (503) 815-1134
Upper Nestucca OHV Trail System (EA): The project involves identification of management and maintenance issues and practices to improve BLM management of the Upper Nestucca OHV Trail System. A new EA will be written to replace the existing Upper Nestucca Motorcycle Trail System EA, dated 1998. Lands are within the Late-Successional Reserve, Adaptive Management Area and Riparian Reserve land use allocations.	Multiple Sections, Upper Nestucca River Watershed, Tillamook and Yamhill Counties.	Scoping Fall/Winter 2012.	Debra Drake (503) 815-1134
Transportation System Management Actions			
None			
Miscellaneous Land Use Requests			
Process Requests (EA/CX/DNA): For various land uses such as rights-of-way, tailholds, and special use permits.	Tillamook Resource Area-wide	Ongoing	Andy Pampush (503) 815-1143

Table 4: District-wide Proposed Projects

Name / Description of Project	Location	Planning Status	Contact
Vegetation Management Actions			
Vegetation Management EA: This project will consider expanding the number of herbicides available for treating invasive plants. Proposed Action is to use herbicides as one of several tools to treat invasive plants and to control unwanted vegetation along roadsides, right of ways, recreation areas, in restoration projects and at Horning Seed Orchard.	District-wide	EA to be completed May 2013.	Claire Hibler (503) 375-5677
Multiple Projects			
None			
Recreation Actions			
None			
Transportation System Management Actions			
None			
Horning Seed Orchard			
None			

Table 5a: Timber Sales for the Salem District (Cascades) - Fiscal Year 2012

Please note that the authorized officer may subsequently change, alter or amend the information on any of these sales.

Resource Area	Cascades	Cascades	Cascades	Cascades
Timber Sale Name	Airstrip	Power Mill	Even Keel	Mini Flats
Probable Location - Township (T), Range (R), section(s) (sec.)	T.4S., R.5E., sec. 7, 18	T.9S., R.2E., sec. 11, 13, 25; T.9S., R.3E., sec. 17, 19, 21	T12S., R1E., sec. 11, 13, 23	T4S., R4E., sec. 13
Land Use Allocation	GFMA/Riparian	GFMA/Riparian	GFMA/Riparian	GFMA/Riparian
County	Clackamas	Marion	Linn	Clackamas
Proposed Harvest Type	Commercial Thinning	Commercial Thinning	Commercial Thinning	Commercial Thinning
Anticipated Acreage Involved	211	354	453	68
Anticipated Volume (MBF)	3,016	6,751	11,545	1,300
Probable Sale Offering Date	February 15, 2012	June 27, 2012	August 22, 2012	Moved to Fiscal Year 2013
Set-Aside for SBA? (Yes or No)	Yes	TBD	No	Yes
NEPA Document Type (CX/EA) and Status	EA completed	EA completed	EA completed	CX completed
Items of Special Interest	N/A	N/A	N/A	N/A
Timber Sale Status (In Preparation/ Advertised/Sold)	Sold	No bids received, not open Reviewed cruise volume Moved to FY 2013	Sold	In Preparation
Contact Person's Name	Keith Walton	Chris Papen	Chris Papen	Alisa Tanner
Contact Person's Number	(503) 375-5676	(503) 375-5633	503) 375-5633	(503) 589-6844

Contents reviewed/edited by District Forester - TL on 10/22/2012

TBD – To be determined

Table 5b: Timber Sales for the Salem District (Cascades) - Fiscal Year 2013

Please note that the authorized officer may subsequently change, alter or amend the information on any of these sales.

Resource Area	Cascades	Cascades	Cascades	Cascades	Cascades
Timber Sale Name	Mini Flats	Power Mill (re-offer)	Take 3	Evan’s Mountain	Crab Race
Probable Location - Township (T), Range (R), section(s) (sec.)	T4S., R4E., sec. 13	T9S., R2E., sec.11, 13, 25; T9S., R3E., sec. 17, 19, 21	T. 3.S., R.5E., sec. 11, 13	T.8S., R.3E., sec. 24, 25; T.8S., R.4E., sec. 19, 29, 30	T.11 S., R.2 E., sec. 12, 13; T.11 S., R.3 E., sec. 7, 8, 9
Land Use Allocation	GFMA/Riparian	GFMA/Riparian	GFMA/Riparian	GFMA/Riparian	Matrix/Riparian/LSR
County	Clackamas	Marion	Clackamas	Marion	Linn
Proposed Harvest Type	Commercial Thinning	Commercial Thinning	Commercial Thinning	Commercial Thinning	Commercial Thinning / Density Management
Anticipated Acreage Involved	68	354	333	252	416
Anticipated Volume (MBF)	1,300	6,751	4,000	3,500	7,000
Probable Sale Offering Date	November 28, 2012	November 28, 2012	February 13, 2013	May 22, 2013	August 28, 2013
Set-Aside for SBA? (Yes or No)	Yes	TBD	No	TBD	TBD
NEPA Document Type (CX/EA) and Status	CX completed	EA completed	EA in preparation	EA in preparation	EA in preparation
Items of Special Interest	N/A	N/A	N/A	N/A	N/A
Timber Sale Status (In Preparation/ Advertised/Sold)	In Preparation	Re-offer	In Preparation	In Preparation	In Preparation
Contact Person’s Name	Alisa Tanner	Chris Papen	Alisa Tanner	Chris Papen	Keith Walton
Contact Person’s Number	(503) 589-6844	(503) 375-5633	(503) 589-6844	(503) 375-5633	(503) 375-5676

Contents reviewed/edited by District Forester - TL on 10/22/2012 TBD – To be determined

Table 5c: Timber Sales for the Salem District (Marys Peak) - Fiscal Year 2012

Please note that the authorized officer may subsequently change, alter or amend the information on any of these sales.

Resource Area	Marys Peak	Marys Peak	Marys Peak	Marys Peak	Marys Peak
Timber Sale Name	Rockhouse	Potter Elk	Panther Creek	Wind Creek Salvage	Apple Rock
Probable Location - Township (T), Range (R), section(s) (sec.)	T.8S., R.6W., sec. 5	T.8S., R.8W., sec. 25, 35	T.7S., R.6W., sec. 9	T.7S., R.7W., sec. 15, 23	T.7S., R.6W., sec. 31
Land Use Allocation	AMA/RR	AMA/RR	AMR/RR	AMR	AMA/RR
County	Polk	Polk	Polk	Polk	Polk
Proposed Harvest Type	Density Management	Density Management	Density Management	Density Management	Density Management
Anticipated Acreage Involved	55	285	39	7	46
Anticipated Volume (MBF)	360	13,079	534	179	1,042
Probable Sale Offering Date	February 15, 2012	June 27, 2012	June 27, 2012	June 27, 2012	August 22, 2012
Set-Aside for SBA? (Yes or No)	No	No	Yes	No	Yes
NEPA Document Type (CX/EA) and Status	CX completed	EA completed	CX completed	CX completed	CX completed
Items of Special Interest	N/A	N/A	N/A	N/A	N/A
Timber Sale Status (In Preparation/ Advertised/Sold)	Sold	Sold	Sold	Sold	Sold
Contact Person's Name	Sandra Holmberg	Sandra Holmberg	Sandra Holmberg	Sandra Holmberg	Sandra Holmberg
Contact Person's Number	(503) 375-5644	(503) 375-5644	(503) 375-5644	(503) 375-5644	(503) 375-5601

Contents reviewed/edited by District Forester - TL on 10/22/2012 TBD – To be determined

Table 5d: Timber Sales for the Salem District (Marys Peak) - Fiscal Year 2013

Please note that the authorized officer may subsequently change, alter or amend the information on any of these sales.

Resource Area	Marys Peak	Marys Peak	Marys Peak	Marys Peak
Timber Sale Name	Fanno Lookout	Upper Warnicke	Robb Mill Loader	C-9
Probable Location - Township (T), Range (R), section(s) (sec.)	T.8S., R.8W., sec. 15, 23, 25	T.7S., R.8W., sec. 14, 15	T.7S., R.6W., sec. 22	T.8S., R.7W., sec. 9
Land Use Allocation	AMA/RR	AMR/RR	AMA/RR	AMA/RR
County	Polk	Polk	Polk	Polk
Proposed Harvest Type	Density Management	Density Management	Density Management	Density Management
Anticipated Acreage Involved	200	286	185	126
Anticipated Volume (MBF)	6,000	6,200	2,800	3,150
Probable Sale Offering Date	November 28, 2012	February 13, 2013	May 22, 2013	August 28, 2013
Set-Aside for SBA? (Yes or No)	Yes	No	TBD	TBD
NEPA Document Type (CX/EA) and Status	EA completed	EA completed	EA completed	EA completed
Items of Special Interest	N/A	N/A	N/A	N/A
Timber Sale Status (In Preparation/ Advertised/Sold)	In Preparation	In Preparation	In Preparation	In Preparation
Contact Person's Name	Sandra Holmberg	Sandra Holmberg	Sandra Holmberg	Sandra Holmberg
Contact Person's Number	(503) 375-5644	(503) 375-5644	(503) 375-5644	(503) 375-5644

Contents reviewed/edited by District Forester - TL on 10/22/2012 TBD – To be determined

Resource Area	Tillamook	Tillamook	Tillamook	Tillamook
Timber Sale Name	Cruiser Fly Re-offer	Wilkenson	Hoag Heaven	Super Snap
Probable Location - Township (T), Range (R), section(s) (sec.)	T.,2S., R.6W., sec. 19	T.2S., R.5W., sec. 9	T.3S., R.7W., sec. 34, 35, 36	T.3S., R.6W., sec. 5, 7, 9
Land Use Allocation	AMA	AMA	LSR	AMA/LSR
County	Tillamook	Yamhill	Tillamook	Tillamook/Yamhill
Proposed Harvest Type	Density Management	Commercial Thinning	Density Management	Density Management
Anticipated Acreage Involved	53	154	121	476
Anticipated Volume (MBF)	1,051	3,276	1,777	10,909
Probable Sale Offering Date	Bids open until June 20, 2012	February 15, 2012	June 27, 2012	August 22, 2012
Set-Aside for SBA? (Yes or No)	No	Yes	Yes	No
NEPA Document Type (CX/EA) and Status	EA – complete	EA – complete	EA – complete	EA – complete
Items of Special Interest	Helicopter yarding, with 9 acres of ground yarding. Part of OSU’s paired watershed study.			
Timber Sale Status (In Preparation/ Advertised/Sold)	Sold	Sold	Sold	Sold
Contact Person’s Name	Brian Christensen	Brian Christensen	Brian Christensen	Brian Christensen
Contact Person’s Number	(503) 815-1119	(503) 815-1119	(503) 815-1119	(503) 815-1119

Contents reviewed/edited by District Forester - TL on 10/22/2012 TBD – To be determined

Table 5f: Timber Sales for the Salem District (Tillamook) - Fiscal Year 2013

Please note that the authorized officer may subsequently change, alter or amend the information on any of these sales.

Resource Area	Tillamook	Tillamook	Tillamook	Tillamook
Timber Sale Name	Head East Re-Offer	Rollercoaster	Jane's Remains	Rabinski's Cube
Probable Location - Township (T), Range (R), section(s) (sec.)	T.3S., R.8W., sec. 3, 11, 13, 14, 15	T.2S., R.5W., sec. 7, 17, 21, 29	T.3S., R.6W., sec. 30; T.3S., R.7W., sec.24, 25, 36	T.3N., R.2W., sec. 7, 9, T.3N., R.3W., sec. 1
Land Use Allocation	LSR	AMA	LSR/AMA	GFMA/CONN
County	Tillamook	Yamhill	Tillamook	Columbia
Proposed Harvest Type	Density Management	Density Management	Density Management	Commercial Thinning
Anticipated Acreage Involved	302	364	169	487
Anticipated Volume (MBF)	6,631	6,150	2,900	9,200
Probable Sale Offering Date	November 28, 2012	February 13, 2013	May 22, 2013	August 28, 2013
Set-Aside for SBA? (Yes or No)	No	Yes	TBD	TBD
NEPA Document Type (CX/EA) and Status	EA – complete	EA - complete	EA - complete	EA - complete
Items of Special Interest	Re-offer of 2011 sale.	N/A	N/A	N/A
Timber Sale Status (In Preparation/ Advertised/Sold)	In Preparation	In Preparation	In Preparation	In Preparation
Contact Person's Name	Brian Christensen	Brian Christensen	Brian Christensen	Brian Christensen
Contact Person's Number	(503) 815-1119	(503) 815-1119	(503) 815-1119	(503) 815-1119

Contents reviewed/edited by District Forester - TL on 10/22/2012 TBD – To be determined