

This Advertisement Includes:

Parcel 1 – Head East-TS10-104

Parcel 2 – Cruiser Horn-TS10-105

Parcel 3 – Bottleneck-TS10-302

Parcel 4 – Lost Lulay Thinning-TS10-502

Parcel 5 – Highland Fling-TS10-503

**UNITED STATES
DEPARTMENT OF THE INTERIOR
BUREAU OF LAND MANAGEMENT
District Office
1717 Fabry Road, S.E.
Salem, Oregon 97306**

Date: August 16, 2010

TIMBER SALE NOTICE

NOTICE IS HEREBY GIVEN that the Bureau of Land Management will offer for sale timber as described herein for oral auction, pursuant to Instructions to Bidders, as stated on Form No. 5440-9 and subject to Notice of Requirement for Certification of Nonsegregated Facilities, Form No. 1140-4, attached. Written and oral bids will be received by the District Manager, or his representative, in the timber sale room at the District Office, 1717 Fabry Road, S.E., Salem, Oregon. The timber sale will commence at 9:00 a.m., on Wednesday, September 15, 2010.

THIS TIMBER SALE NOTICE does not constitute the decision document for purposes of protest and appeal of a forest management decision. Consistent with 43 CFR Subpart 5003-Administrative Remedies, the notice of a timber sale, when published as a legal ad in a newspaper of general circulation shall constitute the decision document for purposes of protest and appeal. Protests may be filed with the Contracting Officer within 15 days of the publication of the aforementioned decision document in the newspaper. It is anticipated that the decision document will be published in the Headlight-Herald, News-Register, Newport News, The News Guard, Molalla Pioneer and the Albany Democrat Herald on or about August 18, 2010. BLM does not warrant publication on this exact date. All parties considering protest of the timber sale decision document are encouraged to review the aforementioned newspaper(s) to ensure accurate knowledge of the exact publication date.

AN ENVIRONMENTAL ASSESSMENT was prepared for each timber sale tract, and a Finding of No Significant Impact has been documented. These documents are available for inspection as background for each timber sale tract at the Salem District Office. Tillamook tracts are available at the Tillamook Resource Area Office.

FOR SBA SET-ASIDE TRACTS, the bidder must not have been determined by the Small Business Administration to be ineligible for preferential award for set-aside sales and must accompany his deposit with a self-certification statement that he is qualified as a small business concern as defined by the Small Business Administration in its regulations, Title 13, Chapter I, Part 121 (Revision 7) as amended, of the Code of Federal Regulations. The Form 5430-1 Self Certification Statement is attached hereto. The successful bidder will be required to sign SBA Form 723 "Small Business Certification Required on All Preferential Sales of Set-Aside Timber" at the time he signs the timber sale contract. A copy of SBA Form 723 is attached.

A WRITTEN BID on Form 5440-9 at not less than the advertised appraised price on a unit basis per species and the required minimum bid deposit shall be required to participate in oral bidding.

THE SUCCESSFUL BIDDER, as a condition of award, will be required to sign Form 1140-6, a certification that the bid was arrived at by the bidder or offeror independently, and was tendered without collusion with any other bidder or offeror. Form 1140-7, Equal Opportunity Affirmative Action Program Representation, must be completed by the successful bidder for all contracts over \$10,000. Form 1140-8, Equal Opportunity Compliance Report Certification, must also be completed by the successful bidder. Form 5450-17, Export Determination, must be completed by the successful bidder. To expedite procedure, this form should be completed and submitted with the written bid.

THE VOLUMES LISTED herein are estimates only. The sale volumes listed are based on 16-foot taper breaks which must be taken into consideration if comparisons are made with volume predictions based on other standards. The volumes based on 32-foot taper breaks are shown for comparison purposes. No sale shall be made for less than the advertised appraised price. The Purchaser shall be liable for the total purchase price, without regard to the amount bid per unit, even though the quantity of timber actually cut or removed or designated for taking is more or less than the estimated volume or quantity so listed.

THESE TIMBER SALES have been cruised based upon Eastside Scribner board foot measure. The minimum bid figures shown by species are dollars per thousand board feet (MBF). The minimum bid increment will be \$0.10 per MBF.

A PERFORMANCE BOND in an amount not less than 20 percent of the total purchase price will be required for all contracts of \$2,500 or more. A minimum performance bond of not less than \$500 will be required for all installment contracts less than \$2,500.

QUALIFIED SMALL BUSINESS concerns may apply to SBA for a loan to provide financing for access road construction required under the terms of qualifying timber sale contracts, and necessary contract changes will be made. Approval of loan applications rests with SBA and may be contingent on availability of funds. Applicants for such loans shall notify BLM of their intention to apply for a loan.

PRE-AWARD QUALIFICATIONS. The high bidder may be required to furnish information to determine the ability to perform the obligations of the contract. If the high bidder is determined not qualified, responsible or refuses to respond within fifteen (15) days of a request for information pertaining to qualifications, the contract may be offered and awarded for the amount of the high bid to the highest of the bidders who is qualified, responsible, and willing to accept the contract.

LOG EXPORT AND SUBSTITUTION: All timber sales shall be subject to the restrictions relating to the export and substitution of unprocessed timber from the United States in accordance with P.L. 94-165 and 43 CFR 5400 and 5420, as amended. The BLM has revised the log export restrictions special provision to reduce the log branding and painting requirements. The new requirements include branding of one end of all logs with a scaling diameter of over 10 inches. All loads of 11 logs or more, regardless of the diameter of the logs, will have a minimum of 10 logs branded on one end. All logs will be branded on loads of 10 logs or less. One end of all branded logs will be marked with yellow paint. At the discretion of the Contracting Officer, the Purchaser may be required to brand and paint all logs. The Purchaser shall bear any increased costs for log branding and painting.

A REVISED SPECIAL PROVISION has been added to the contract which enables the Contracting Officer to suspend the contract to facilitate protection of certain plant or animal species, and /or to modify or terminate the contract when necessary to:

1. Comply with the Endangered Species Act, or;
2. Comply with a court order, or;
3. Protect occupied marbled murrelet sites in accordance with the Standards and Guidelines of the Salem District Record of Decision (ROD) and Resource Management Plan (RMP), or;
4. Protect species which were identified for protection through survey and manage and/or protection buffer standards and guidelines established in the ROD and RMP.

This contract provision limits the liability of the Government to the actual costs incurred by the Purchaser which have not been amortized by timber removed from the contract area.

ADDITIONAL INFORMATION concerning this timber sale tract is available at the above District Office. A copy of the timber sale contract is also available for inspection at the District Office.

Attachments:

Form 5440-9

Form 1140-4

Form 5450-17

Form 5430-1

SBA Form 723

TIMBER SALE NOTICE

THIS IS A SMALL BUSINESS SET-ASIDE SALE FOR PREFERENTIAL BIDDING BY SMALL BUSINESS CONCERNS AS DEFINED BY THE SMALL BUSINESS ADMINISTRATION.

SALEM DISTRICT
TILLAMOOK RESOURCE AREA
COLUMBIA MASTER UNIT

Sale Date: September 15, 2010

ORS000-TS10-104, Head East Timber Sale

TILLAMOOK COUNTY, OREGON: O&C: ORAL AUCTION: BID DEPOSIT REQUIRED: \$67,000

All timber designated for cutting on Lot 1, Lot 2, S ½ NE ¼, N ½ SE ¼, Sec.3, N ½ NE ¼, SE ¼ NE ¼, N ½ NW ¼, SE ¼ NW ¼, E ½ SW ¼, W ½ SW ¼, Sec. 11, NE ¼, NW ¼, N ½ SW ¼, NW ¼ SE ¼, Sec. 13, N ½ NW ¼, Sec. 14, NE ¼, Sec. 15, SW ¼ NW ¼, Sec. 24, T. 3 S., R. 8 W., W. M., Oregon

THIS TIMBER SALE HAS BEEN CRUISED BASED UPON EASTSIDE SCRIBNER MEASURE. Minimum bid figures shown by species are dollars per thousand board feet (MBF). The minimum bid increment will be \$0.10 per MBF.

| Approx. No. Merchantable Trees | Est. Vol. MBF 32' Log | Est. Vol. CCF | Species | Est. Vol. MBF 16' Log | Appraised Price Per MBF | Estimated Volume Times Appraised Price |
|--------------------------------------|-----------------------------|------------------|-------------|-----------------------------|-------------------------------|---|
| 31,295 | 3,262 | 7,654 | Douglas-fir | 4,021 | \$108.70 | \$437,082.70 |
| 27,485 | 2,886 | 6,823 | w. hemlock | 3,602 | \$60.60 | \$218,281.20 |
| 2,502 | 53 | 142 | Red alder | 70 | \$202.80 | \$14,196.00 |
| 61,282 | 6,201 | 14,619 | Totals | 7,693 | | \$669,559.90 |

LOG EXPORT AND SUBSTITUTION RESTRICTIONS: All timber offered for sale hereunder is restricted from export from the United States in the form of unprocessed timber and also prohibited from substitution of exported private timber.

CRUISE INFORMATION: The timber volumes for the partial cut units were based on a variable plot cruise for estimating the board foot volume of trees. Plots were measured using a 20 basal area factor (BAF) for partial cut units. None of the total sale volume is salvage material. For merchantable Douglas-fir trees the average DBHOB is 12.4 inches; the average gross merchantable log contains 36 bf; the total gross volume is approximately 4,147 MBF; and 97% recovery is expected. The Right-of-Way volume is based on a 3-P cruise for estimating the board foot volume of trees.

CUTTING AREA: 12 units totaling approximately 360 acres are partial cut and 17 acres are Right-of-Way. Acres shown on Exhibit A have been computed using a Trimble Pro XH Global Positioning System receiver. Acreage was calculated based on Global Positioning System traverse procedures including differential correction.

CONTRACT TERMINATION: A revised Special Provision has been added to the contract which enables the Contracting Officer to suspend the contract to facilitate protection of certain plant or animal species, and /or to modify or terminate the contract when necessary to:

1. Comply with the Endangered Species Act, or;
2. Comply with a court order, or;
3. Protect occupied marbled murrelet sites in accordance with the Standards and Guidelines of the Salem District Record of Decision (ROD) and Resource Management Plan (RMP), or;
4. Protect species which were identified for protection through survey and manage and/or protection buffer standards and guidelines established in the ROD and RMP.

This contract provision limits the liability of the Government to the actual costs incurred by the Purchaser which have not been amortized by timber removed from the contract area.

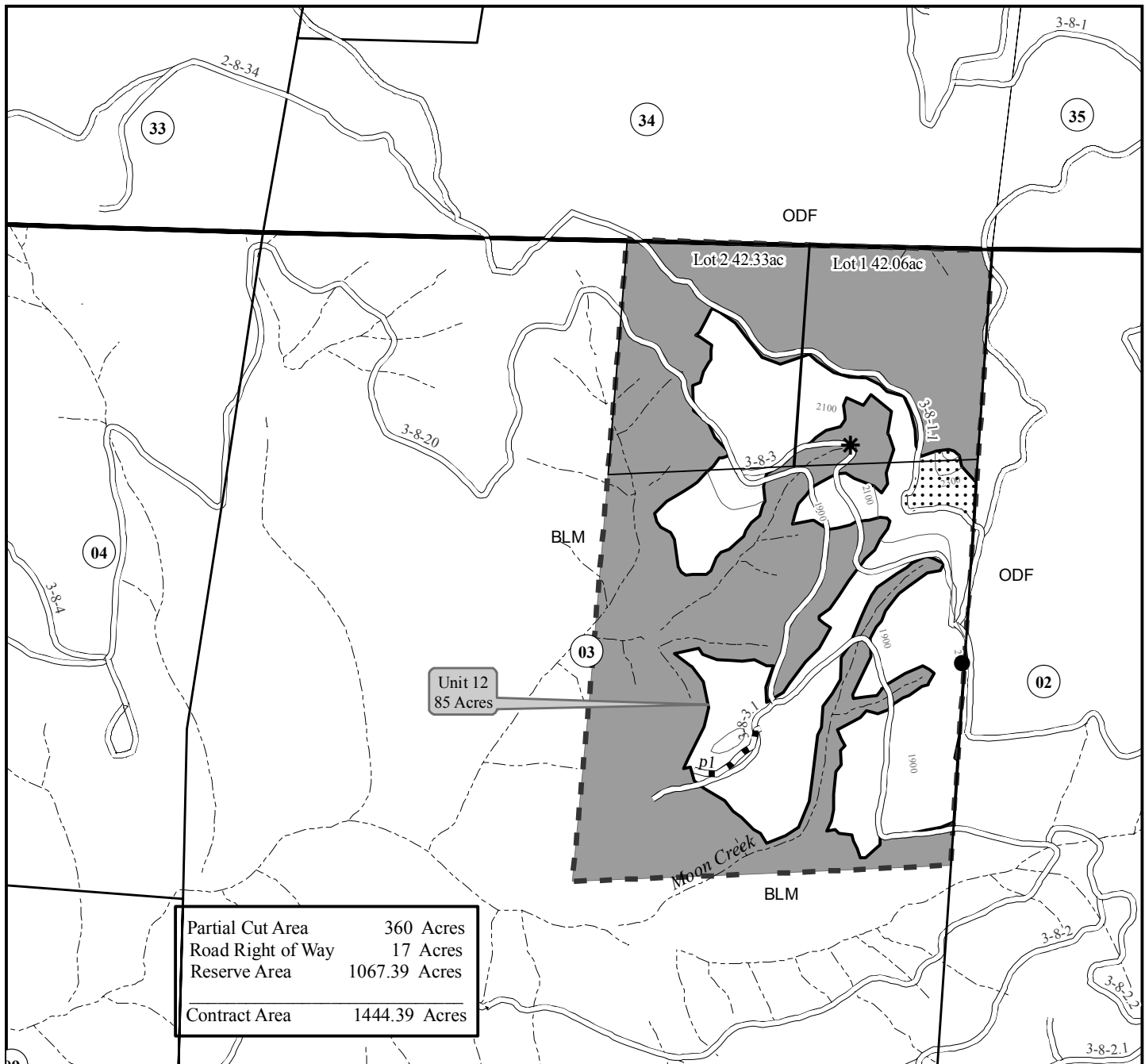
DURATION OF CONTRACT: Will be 36 months for cutting and removal of timber.

United States Department of the Interior
BUREAU OF LAND MANAGEMENT
SALEM DISTRICT - OREGON
TIMBER SALE CONTRACT MAP

Contract No. ORS000-TS10-104
Head East Timber Sale
Exhibit A
Page 1 of 5

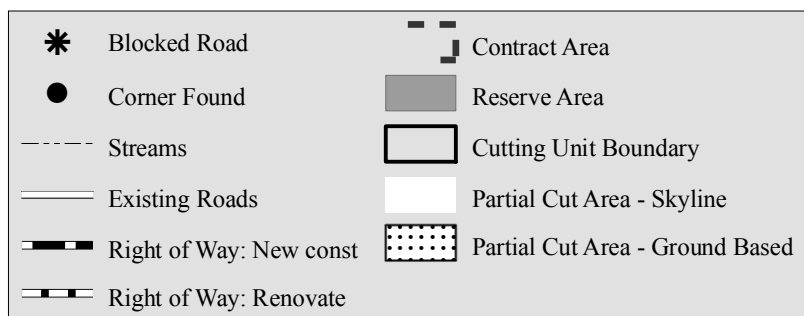
August 5, 2010

T. 3S, R. 8W, Sections 3, 11, 13, 14, 15 & 24 W. M.



Contour Interval : 40'

1,000 500 0 Feet



Note: Boundaries of Harvest Areas are posted and/or painted orange.

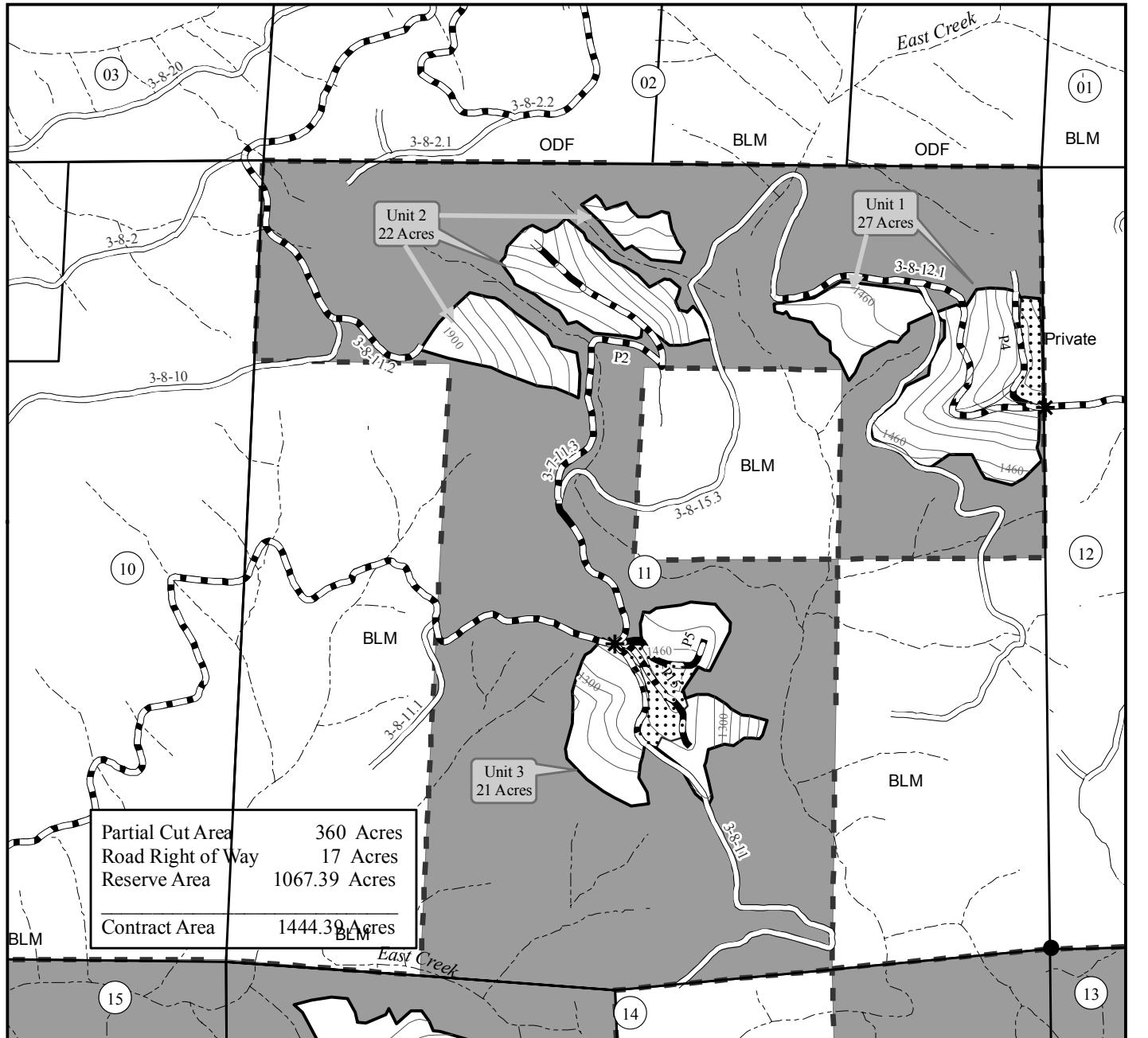
Acres shown on Exhibit A for partial cut have been computed using a Trimble Pro XR Global Positioning System receiver. Acreage was calculated based on Global Positioning System traverse procedures including differential correction.

United States Department of the Interior
BUREAU OF LAND MANAGEMENT
SALEM DISTRICT - OREGON
TIMBER SALE CONTRACT MAP

Contract No. ORS000-TS10-104
Head East Timber Sale
Exhibit A
Page 2 of 5

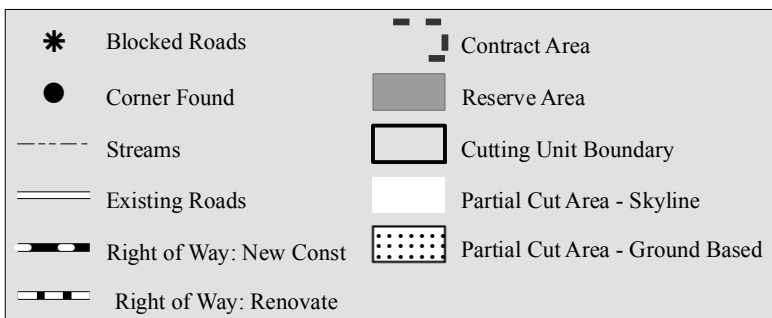
Aug 5, 2010

T. 3S, R. 8W, Sections 3, 11, 13, 14, 15 & 24 W. M.



Contour Interval : 40'

1,000 500 0 Feet



Note: Boundaries of Harvest Areas are posted and/or painted orange.

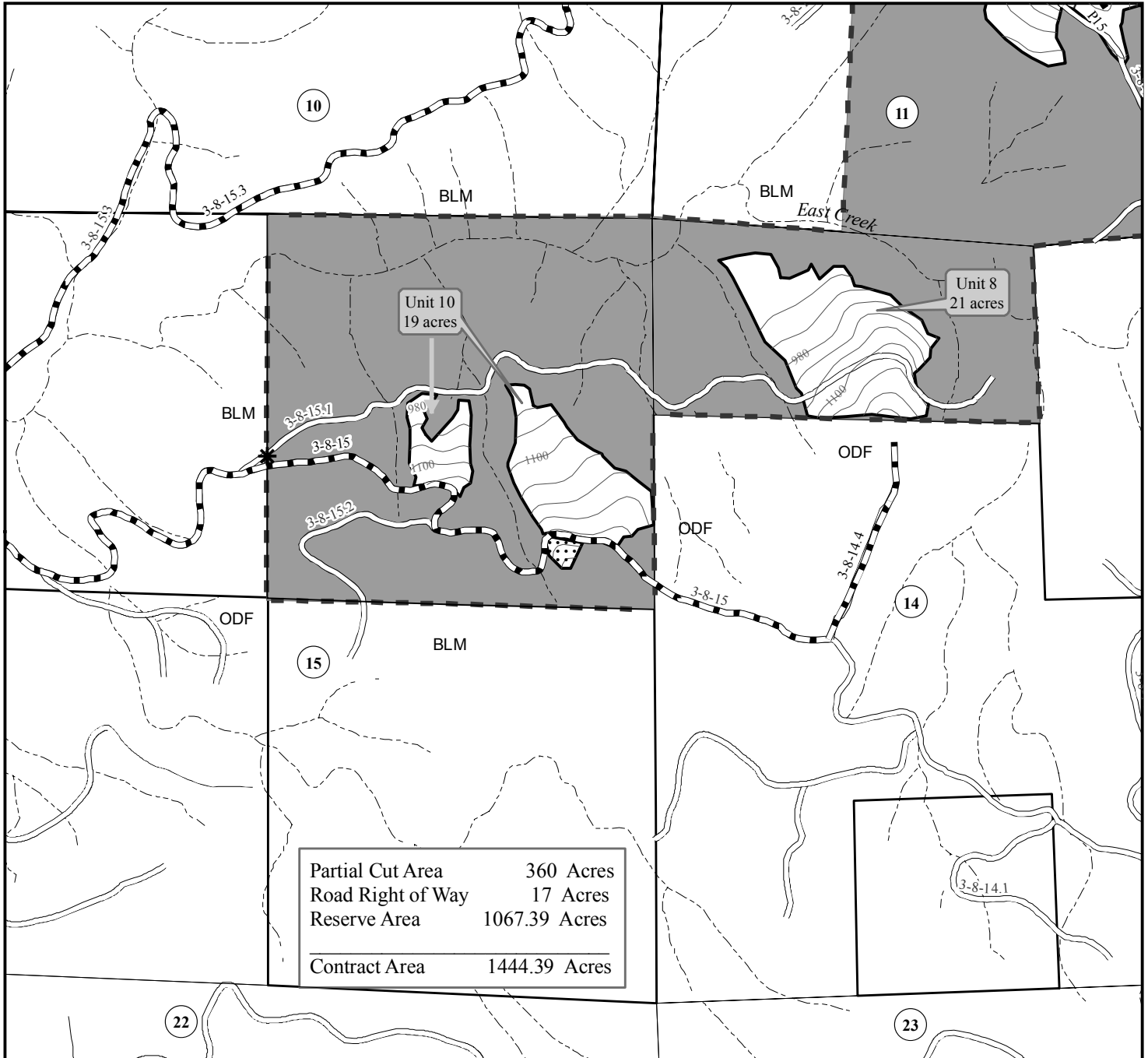
Acres shown on Exhibit A for partial cut have been computed using a Trimble Pro XR Global Positioning System receiver. Acreage was calculated based on Global Positioning System traverse procedures including differential correction.

United States Department of the Interior
BUREAU OF LAND MANAGEMENT
SALEM DISTRICT - OREGON
TIMBER SALE CONTRACT MAP

Contract No. ORS000-TS10-104
Head East Timber Sale
Exhibit A
Page 3 of 5

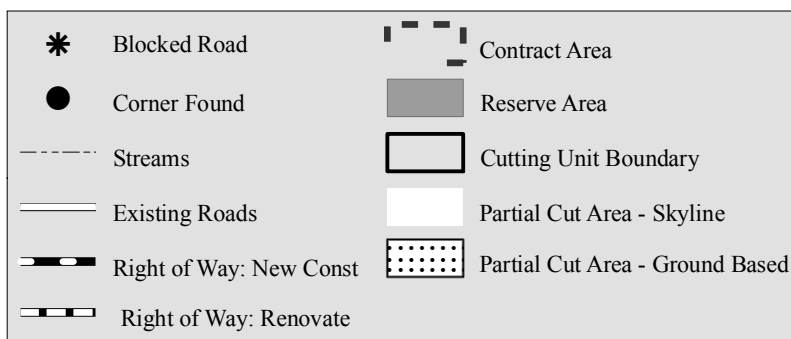
August 5, 2010

T. 3S, R. 8W, Sections 3, 11, 13, 14, 15 & 24 W. M.



Contour Interval : 40'

1,000 500 0 Feet



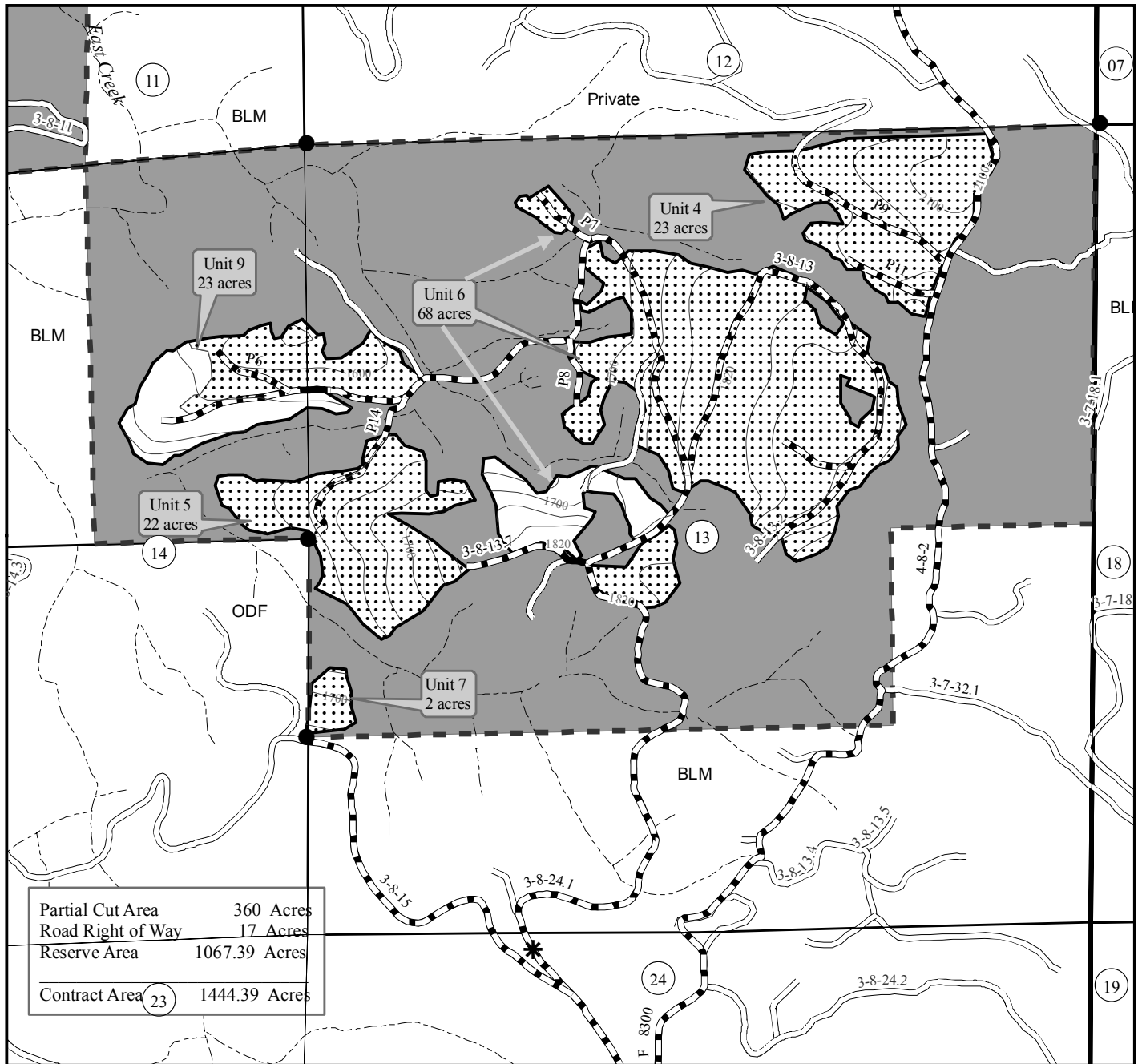
Note: Boundaries of Harvest Areas are posted and/or painted orange.
Acres shown on Exhibit A for partial cut have been computed using a Trimble Pro XR Global Positioning System receiver. Acreage was calculated based on Global Positioning System traverse procedures including differential correction.

United States Department of the Interior
BUREAU OF LAND MANAGEMENT
SALEM DISTRICT - OREGON
TIMBER SALE CONTRACT MAP

Contract No. ORS000-TS10-104
Head East Timber Sale
Exhibit A
Page 4 of 5

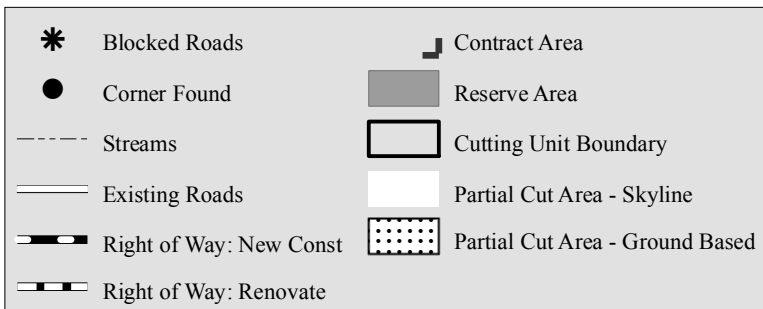
August 5, 2010

T. 3S, R. 8W, Sections 3, 11, 13, 14, 15 & 24 W. M.



Contour Interval : 40'

1,000 500 0 Feet



Note: Boundaries of Harvest Areas are posted and/or painted orange.

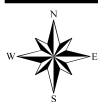
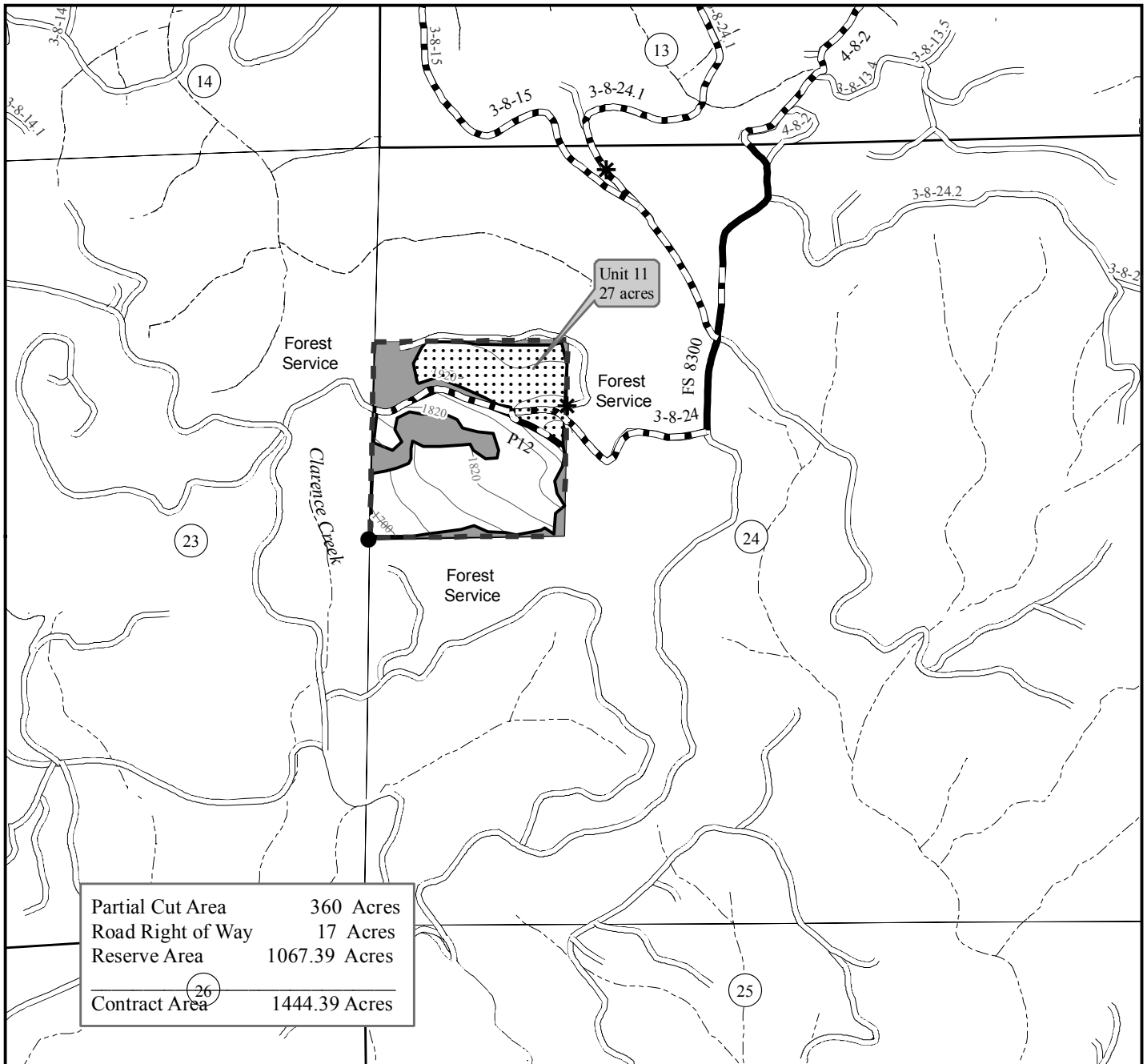
Acres shown on Exhibit A for partial cut have been computed using a Trimble Pro XR Global Positioning System receiver. Acreage was calculated based on Global Positioning System traverse procedures including differential correction.

United States Department of the Interior
BUREAU OF LAND MANAGEMENT
SALEM DISTRICT - OREGON
TIMBER SALE CONTRACT MAP

Contract No. ORS000-TS10-104
Head East Timber Sale
Exhibit A
Page 5 of 5

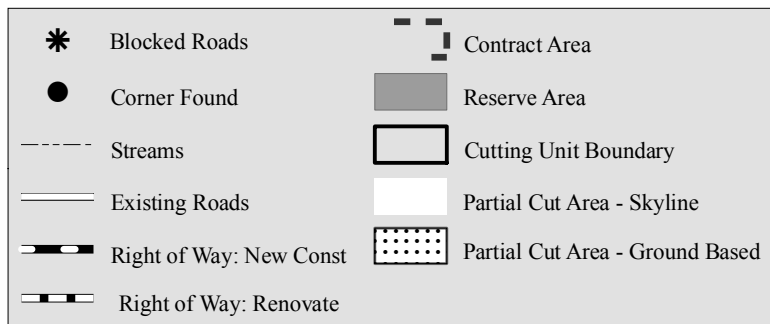
August 5, 2010

T. 3S, R. 8W, Sections 3, 11, 13, 14, 15 & 24 W. M.



Contour Interval : 40'

1,000 500 0 Feet



Note: Boundaries of Harvest Areas are posted and/or painted orange.

Acres shown on Exhibit A for partial cut have been computed using a Trimble Pro XR Global Positioning System receiver. Acreage was calculated based on Global Positioning System traverse procedures including differential correction.

TIMBER SALE NOTICE

THIS IS A SMALL BUSINESS SET-ASIDE SALE FOR PREFERENTIAL BIDDING BY SMALL BUSINESS CONCERNS AS DEFINED BY THE SMALL BUSINESS ADMINISTRATION.

SALEM DISTRICT
TILLAMOOK RESOURCE AREA
COLUMBIA MASTER UNIT

Sale Date: September 15, 2010

ORS000-TS10-105, Cruiserhorn Timber Sale

YAMHILL, OREGON: O&C: ORAL AUCTION: BID DEPOSIT REQUIRED: \$10,900

All timber designated for cutting in SE ¼, SECTION 8, T.2 S., R.6 W., W.M., Oregon.

THIS TIMBER SALE HAS BEEN CRUISED BASED UPON EASTSIDE SCRIBNER MEASURE. Minimum bid figures shown by species are dollars per thousand board feet (MBF). The minimum bid increment will be \$0.10 per MBF.

| Approx. No. Merchantable Trees | Est. Vol. MBF 32' Log | Est. Vol. CCF | Species | Est. Vol. MBF 16' Log | Appraised Price Per MBF | Estimated Volume Times Appraised Price |
|--------------------------------------|-----------------------------|------------------|-------------|-----------------------------|-------------------------------|---|
| 7,220 | 783 | 1,804 | Douglas-fir | 965 | \$112.00 | \$108,080.00 |
| 7,220 | 783 | 1,804 | Totals | 965 | | \$108,080.00 |

LOG EXPORT AND SUBSTITUTION RESTRICTIONS: All timber offered for sale hereunder is restricted from export from the United States in the form of unprocessed timber and also prohibited from substitution of exported private timber.

CRUISE INFORMATION: The timber volumes for the partial cut units were based on a variable plot cruise for estimating the board foot volume of trees. Plots were measured using a 20 basal area factor (BAF) for partial cut units. None of the total sale volume is salvage material. For merchantable Douglas-fir trees the average DBHOB is 12.2 inches; the average gross merchantable log contains 36 bf; the total gross volume is approximately 1,002 MBF; and 96% recovery is expected. The Right-of-Way volume is based on a 3-P cruise for estimating the board foot volume of trees.

CUTTING AREA: 1 unit totaling approximately 64 acres are partial cut and 1 acres are Right-of-Way. Acres shown on Exhibit A have been computed using a Trimble Pro XH Global Positioning System receiver. Acreage was calculated based on Global Positioning System traverse procedures including differential correction.

CONTRACT TERMINATION: A revised Special Provision has been added to the contract which enables the Contracting Officer to suspend the contract to facilitate protection of certain plant or animal species, and /or to modify or terminate the contract when necessary to:

1. Comply with the Endangered Species Act, or;
2. Comply with a court order, or;
3. Protect occupied marbled murrelet sites in accordance with the Standards and Guidelines of the Salem District Record of Decision (ROD) and Resource Management Plan (RMP), or;
4. Protect species which were identified for protection through survey and manage and/or protection buffer standards and guidelines established in the ROD and RMP.

This contract provision limits the liability of the Government to the actual costs incurred by the Purchaser which have not been amortized by timber removed from the contract area.

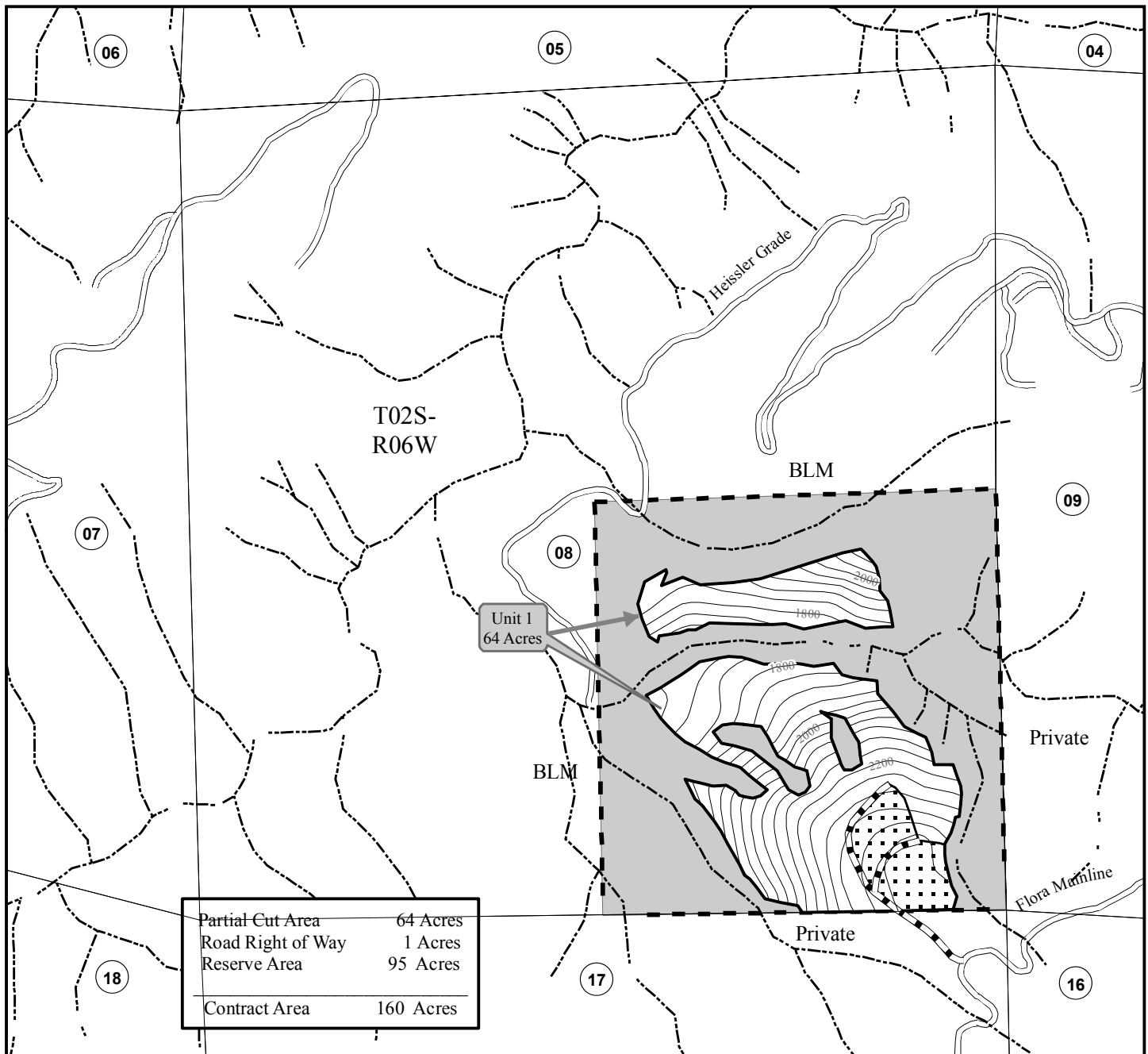
DURATION OF CONTRACT: Will be 36 months for cutting and removal of timber.

United States Department of the Interior
BUREAU OF LAND MANAGEMENT
TIMBER SALE CONTRACT MAP

Contract No. ORS000-TS10-105
Cruiserhorn Timber Sale
Exhibit A
Page 1 of 1

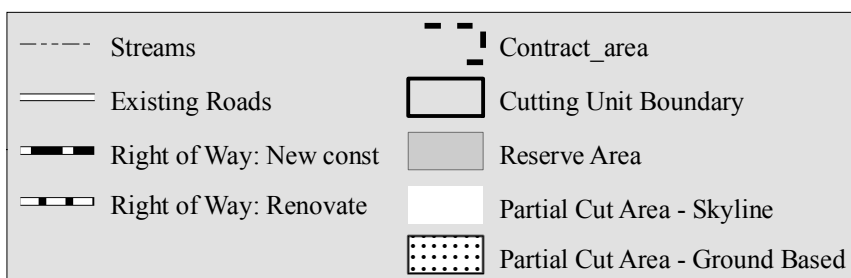
June 29, 2010

T. 2S, R. 6W, Section 8 W. M. - SALEM DISTRICT - OREGON



Contour Interval : 40'

1,000 500 0 Feet



Note: Boundaries of Harvest Areas are posted and/or painted orange.

Acres shown on Exhibit A for partial cut have been computed using a Trimble Pro XR Global Positioning System receiver. Acreage was calculated based on Global Positioning System traverse procedures including differential correction.

TIMBER SALE NOTICE

SALEM DISTRICT
MARYS PEAK RESOURCE AREA
COLUMBIA MASTER UNIT

SALE DATE: September 15, 2010

CONTRACT NO. ORS000-TS10-302, Bottleneck Timber Sale

LINCOLN COUNTY, OREGON: PD: ORAL AUCTION: BID DEPOSIT REQUIRED: \$93,400.00

All timber designated for cutting on S $\frac{1}{2}$ NE $\frac{1}{4}$, W $\frac{1}{2}$ NW $\frac{1}{4}$, SE $\frac{1}{4}$ NW $\frac{1}{4}$, N $\frac{1}{2}$ SW $\frac{1}{4}$, N $\frac{1}{2}$ SE $\frac{1}{4}$, SE $\frac{1}{4}$ SE $\frac{1}{4}$, Section 8; SW $\frac{1}{4}$ NW $\frac{1}{4}$, W $\frac{1}{2}$ SW $\frac{1}{4}$, Section 9, T. 7 S., R. 9 W., W.M.

THIS TIMBER SALE HAS BEEN CRUISED BASED UPON EASTSIDE SCRIBNER MEASURE. Minimum bid figures shown by species are dollars per thousand board feet (MBF). The minimum bid increment will be \$0.10 per MBF.

| Approx. No. Merchantable Trees | Est. Vol. MBF 32' Log | Est. Vol. CCF | Species | Est. Vol. MBF 16' Log | Appraised Price Per MBF | Estimated Volume Times Appraised Price |
|--------------------------------------|-----------------------------|------------------|-----------------|-----------------------------|-------------------------------|---|
| 30,726 | 4,695 | 11,333 | Douglas-fir | 6,042 | \$154.10 | \$931,072.20 |
| 67 | 14 | 32 | Western Hemlock | 18 | \$120.10 | \$2,161.80 |
| 30,793 | 4,709 | 11,365 | Totals | 6,060 | | \$933,234.00 |

LOG EXPORT AND SUBSTITUTION RESTRICTIONS: All timber offered for sale hereunder is restricted from export from the United States in the form of unprocessed timber and also prohibited from substitution of exported private timber.

CRUISE INFORMATION: The timber volumes were based on variable plot cruise using form class tables for estimating board foot volume of trees in 16-foot logs. Approximately 0% of the total sale volume is salvage material. With respect to merchantable trees of all species; the average tree is 15.3 inches DBHOB; the average log contains 48 bd. ft.; the total gross volume is approximately 6422 MBF; and 94% recovery is expected.

CUTTING AREA: One unit totaling approximately 161 acres shall be partial cut, and approximately 5 acres of right-of-way shall be clearcut. Acres shown on Exhibit A have been computed using a Trimble GeoXT Global Positioning System receiver. Acreage was calculated based on Global Positioning System traverse procedures including differential correction.

CONTRACT TERMINATION: A revised Special Provision has been added to the contract which enables the Contracting Officer to suspend the contract to facilitate protection of certain plant or animal species, and /or to modify or terminate the contract when necessary to:

1. Comply with the Endangered Species Act, or;
2. Comply with a court order, or;
3. Protect occupied marbled murrelet sites in accordance with the Standards and Guidelines of the Salem District Record of Decision (ROD) and Resource Management Plan (RMP), or;
4. Protect species which were identified for protection through survey and manage and/or protection buffer standards and guidelines established in the ROD and RMP.

This contract provision limits the liability of the Government to the actual costs incurred by the Purchaser which have not been amortized by timber removed from the contract area.

DURATION OF CONTRACT: Will be 36 months for cutting and removal of timber.

July 26, 2010

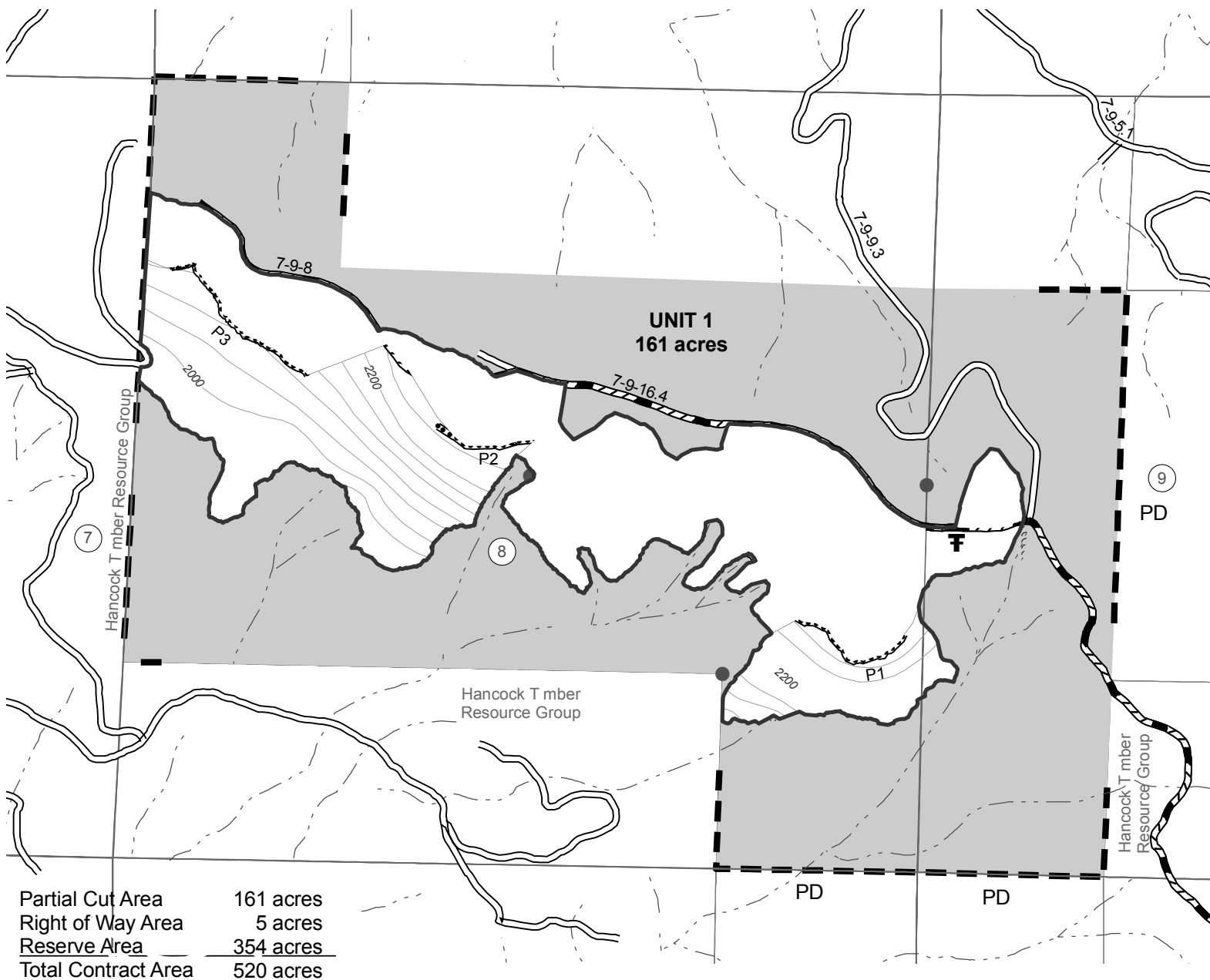
UNITED STATES DEPARTMENT OF THE INTERIOR
Bureau of Land Management
Salem District - Oregon

Bottleneck
Timber Sale

TIMBER SALE CONTRACT MAP - CONTRACT NO. ORS000-TS10-302

EXHIBIT A

T. 7 S., R. 9 W., Sections 8 and 9, W.M. - SALEM DISTRICT - OREGON



Contour interval: 40 ft.

- | | | | |
|--|--|--|---|
| | Right of Way Road to be Constructed and Decommissioned | | Partial Cut Area - Ground-Based Yarding |
| | Right of Way Road to be Renovated | | Partial Cut Area - Skyline Yarding |
| | Existing Road | | Boundary - Cutting Area |
| | Seed tree | | Boundary - Contract Area |
| | Stream | | Reserve Area |
| | Stream Protection Zone | | |
| | Found corner | | |

NOTES: Boundary of partial cut areas and rights of way of roads to be constructed are painted orange and posted. Unit acres do not include existing or new roads. Acres shown on Exhibit A have been computed using a Trimble Geo XT Global Positioning System Receiver. Acreage was calculated based on Global Positioning System traverse procedures including differential correction.



1,000 500 0 1,000 Feet

TIMBER SALE NOTICE

THIS IS A SMALL BUSINESS SET-ASIDE SALE FOR PREFERENTIAL BIDDING BY SMALL BUSINESS CONCERNS AS DEFINED BY THE SMALL BUSINESS ADMINISTRATION.

SALEM DISTRICT
CASCADES RESOURCE AREA
SANTIAM MASTER UNIT

SALE DATE: September 15, 2010

ORS000-TS10-502, Lost Lulay Thinning Timber Sale

LINN COUNTY, OREGON: O&C: ORAL AUCTION: BID DEPOSIT REQUIRED: \$133,800.00

All timber designated for cutting on: E $\frac{1}{2}$ SW $\frac{1}{4}$, SE $\frac{1}{4}$, Sec. 25, T. 10 S., R. 1 W., SW $\frac{1}{4}$, Sec. 21, SW $\frac{1}{4}$ NW $\frac{1}{4}$, W $\frac{1}{2}$ SW $\frac{1}{4}$, SE $\frac{1}{4}$ SW $\frac{1}{4}$, S $\frac{1}{2}$ SE $\frac{1}{4}$, Sec. 23, W $\frac{1}{2}$ NE $\frac{1}{4}$, NW $\frac{1}{4}$, N $\frac{1}{2}$ SW $\frac{1}{4}$, Sec. 25, N $\frac{1}{2}$ Sec. 29, T. 10 S., R. 1 E., Lot 1, NE $\frac{1}{4}$ NW $\frac{1}{4}$, Sec. 19, T. 10 S., R. 2 E., Lots 1, 2, NE $\frac{1}{4}$ SW $\frac{1}{4}$, Sec. 5, T. 11 S., R. 1 E., WM.

THIS TIMBER SALE HAS BEEN CRUISED BASED UPON EASTSIDE SCRIBNER MEASURE. Minimum bid figures shown by species are dollars per thousand board feet (MBF). The minimum bid increment will be \$0.10 per MBF.

| Approx. No. Merchantable Trees | Est. Vol. MBF 32' Log | Est. Vol. CCF | Species | Est. Vol. MBF 16' Log | Appraised Price Per MBF | Estimated Volume Times Appraised Price |
|--------------------------------------|-----------------------------|------------------|-----------------|-----------------------------|-------------------------------|---|
| 36,396 | 5,171 | 10,930 | Douglas-fir | 6,017 | \$194.90 | \$1,172,713.30 |
| 7,066 | 750 | 1,692 | Western Hemlock | 911 | \$127.40 | \$116,061.40 |
| 5,547 | 216 | 664 | Bigleaf Maple | 327 | \$48.30 | \$15,794.10 |
| 1,675 | 203 | 411 | Grand fir | 239 | \$139.60 | \$33,364.40 |
| 50,684 | 6,340 | 13,697 | Totals | 7,494 | | \$1,337,933.20 |

LOG EXPORT AND SUBSTITUTION RESTRICTIONS: All timber offered for sale hereunder is restricted from export from the United States in the form of unprocessed timber and also prohibited from substitution of exported private timber.

CRUISE INFORMATION: The timber volumes were based on a variable plot and 100% cruise using form class tables for estimating board feet volume of trees in 16-foot logs. Approximately 0 trees which are considered to be non-merchantable are designated for cutting. Approximately 0% of the total sale volume is salvage material. With respect to merchantable trees of all species; the average tree is 12.4 inches DBHOB; the average log contains 41bd. ft.; the total gross volume is approximately 7,846 MBF; and 96% recovery is expected.

CUTTING AREA: 16 units totaling approximately 430 acres shall be partial cut and approximately 3 acres of right-of-away shall be cut. Acres shown on Exhibit A have been computed using a Trimble Geo XT Global Positioning System receiver. Acreage was calculated based on Global Positioning System traverse procedures including differential correction.

CONTRACT TERMINATION: A revised Special Provision has been added to the contract which enables the Contracting Officer to suspend the contract to facilitate protection of certain plant or animal species, and /or to modify or terminate the contract when necessary to:

1. Comply with the Endangered Species Act, or;
2. Comply with a court order, or;
3. Protect occupied marbled murrelet sites in accordance with the Standards and Guidelines of the Salem District Record of Decision (ROD) and Resource Management Plan (RMP), or;
4. Protect species which were identified for protection through survey and manage and/or protection buffer standards and guidelines established in the ROD and RMP.

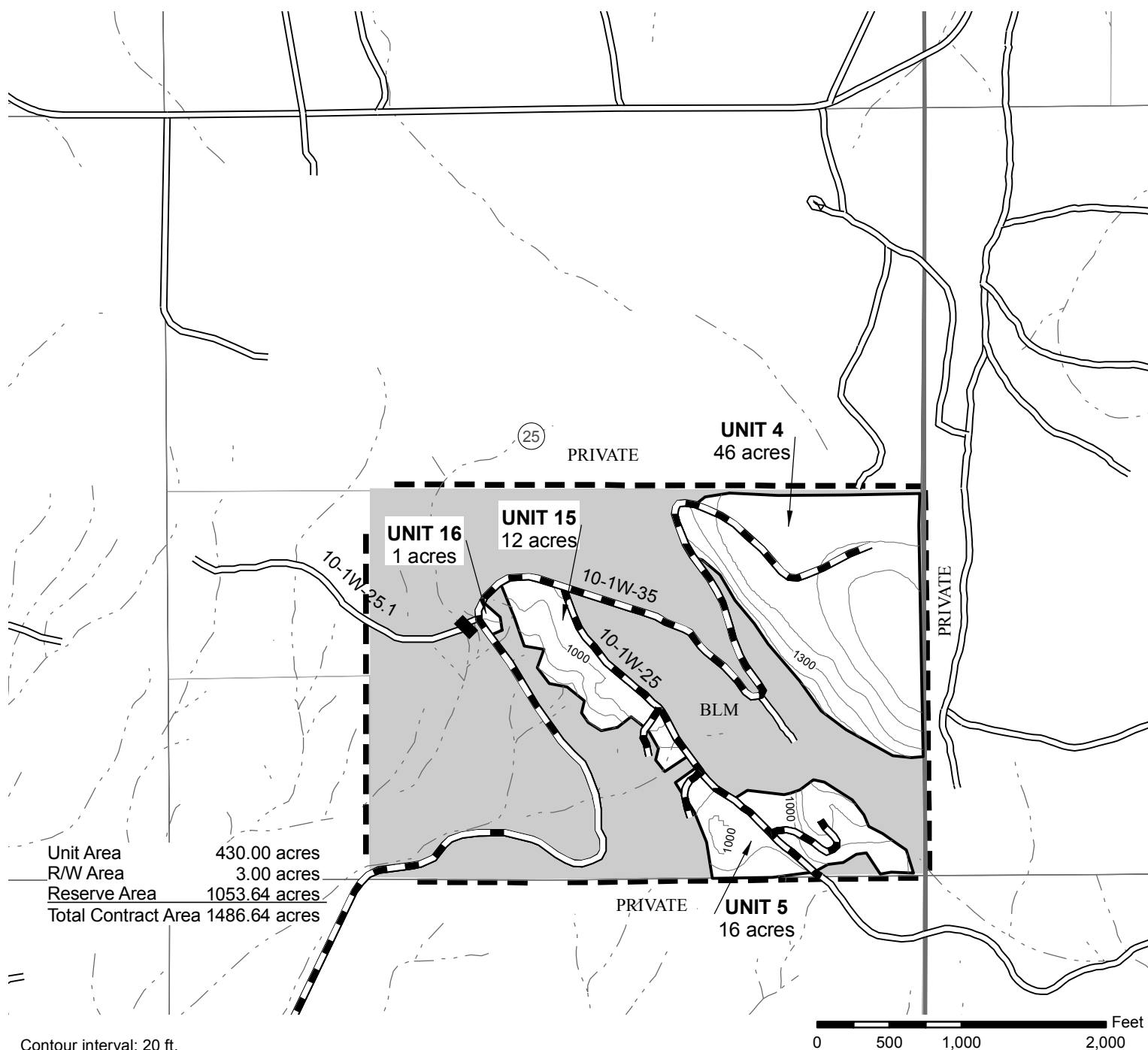
DURATION OF CONTRACT: Will be 36 months for cutting and removal of timber.

United States Department of Interior
BUREAU OF LAND MANAGEMENT
Salem District - Oregon
TIMBER SALE CONTRACT MAP - CONTRACT NO. ORS000-TS10-502
T. 10 S., R.1 W., Section 25, W.M.

Lost Lulay Thinning
Timber Sale

EXHIBIT A

Sheet 1 of 7



- Right-of-Way Road to be constructed
- Road to be improved
- Road to be renovated
- Earth/Debris Barricade
- Gate
- Existing road
- Stream

- Unit Area - Ground Based Yarding
- Unit Area - Special Yarding
- Boundary - Cutting Area
- Boundary - Contract Area
- Reserve Area

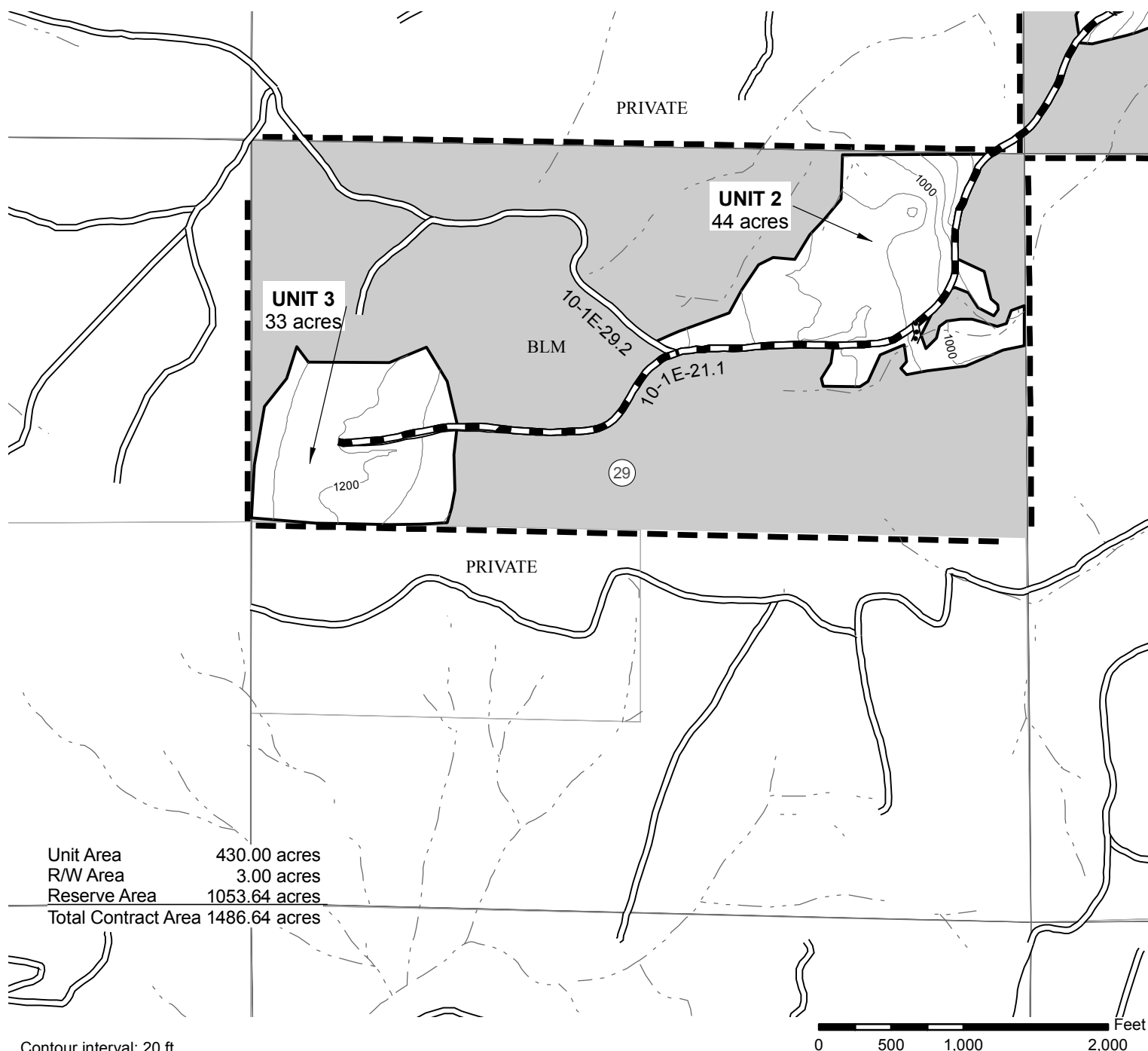
NOTES: Boundary of partial cut areas and rights of way of roads to be constructed and renovated are painted orange and posted. Unit acres do not include existing or new roads. Acres shown on Exhibit A have been computed using a Trimble Geo XT Global Positioning System Receiver. Acreage was calculated based on Global Positioning System traverse procedures including differential correction.

United States Department of Interior
BUREAU OF LAND MANAGEMENT
Salem District - Oregon
TIMBER SALE CONTRACT MAP - CONTRACT NO. ORS000-TS10-502
T. 10 S., R.1 E., Section 29, W.M.

Lost Lulay Thinning
Timber Sale

EXHIBIT A

Sheet 2 of 7



Right-of-Way Road to be constructed

Road to be improved

Road to be renovated

Earth/Debris Barricade

Gate

Existing road

Stream

Unit Area - Ground Based Yarding

Unit Area - Special Yarding

Boundary - Cutting Area

Boundary - Contract Area

Reserve Area

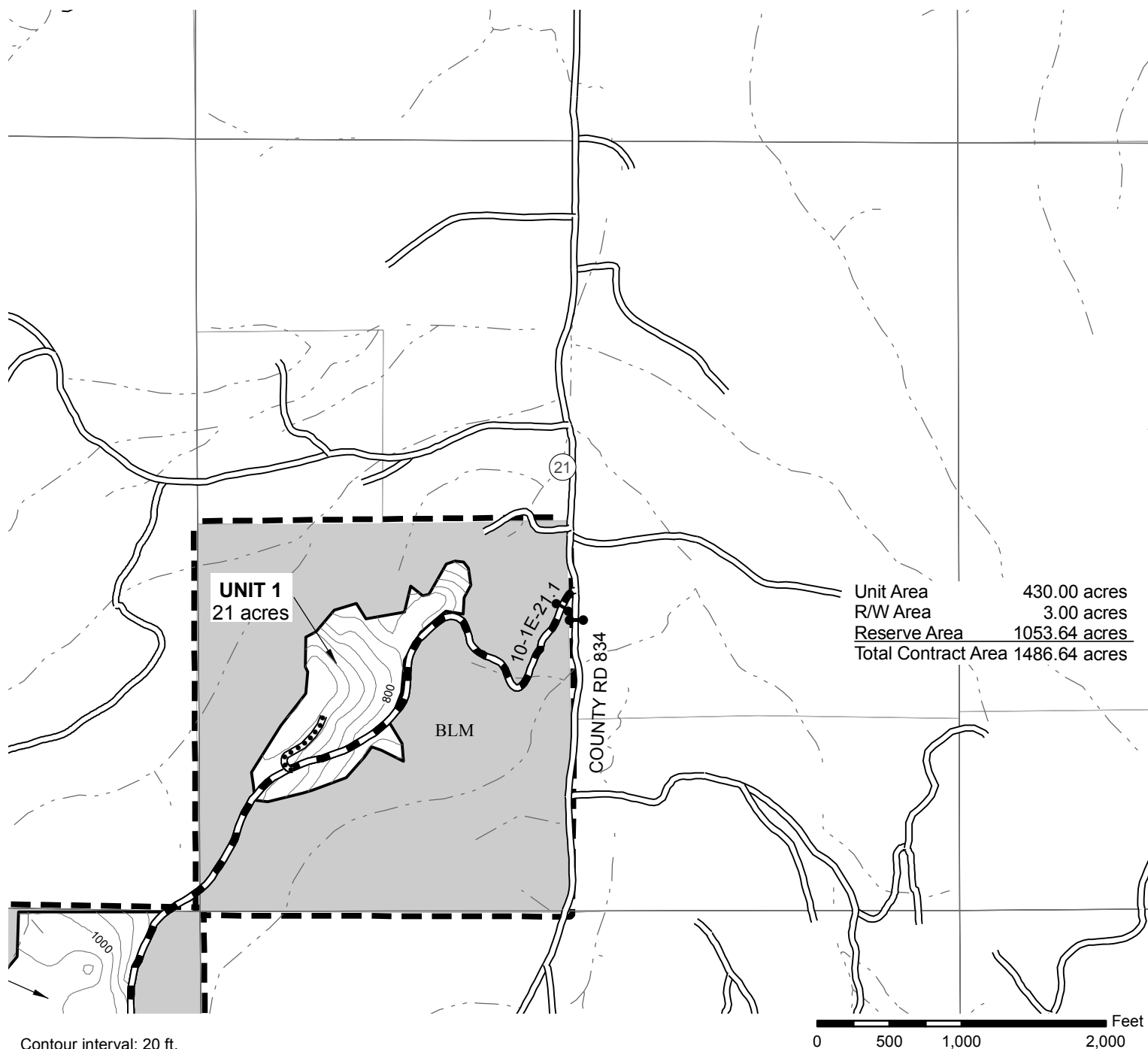
NOTES: Boundary of partial cut areas and rights of way of roads to be constructed and renovated are painted orange and posted. Unit acres do not include existing or new roads. Acres shown on Exhibit A have been computed using a Trimble Geo XT Global Positioning System Receiver. Acreage was calculated based on Global Positioning System traverse procedures including differential correction.

United States Department of Interior
BUREAU OF LAND MANAGEMENT
Salem District - Oregon
TIMBER SALE CONTRACT MAP - CONTRACT NO. ORS000-TS10-502
T. 10 S., R.1 E., Section 21, W.M.

**Lost Lulay Thinning
Timber Sale**

EXHIBIT A

Sheet 3 of 7



- Right-of-Way Road to be constructed
- Road to be improved
- Road to be renovated
- Earth/Debris Barricade
- Gate
- Existing road
- Stream

- Unit Area - Ground Based Yarding
- Unit Area - Special Yarding
- Boundary - Cutting Area
- Boundary - Contract Area
- Reserve Area



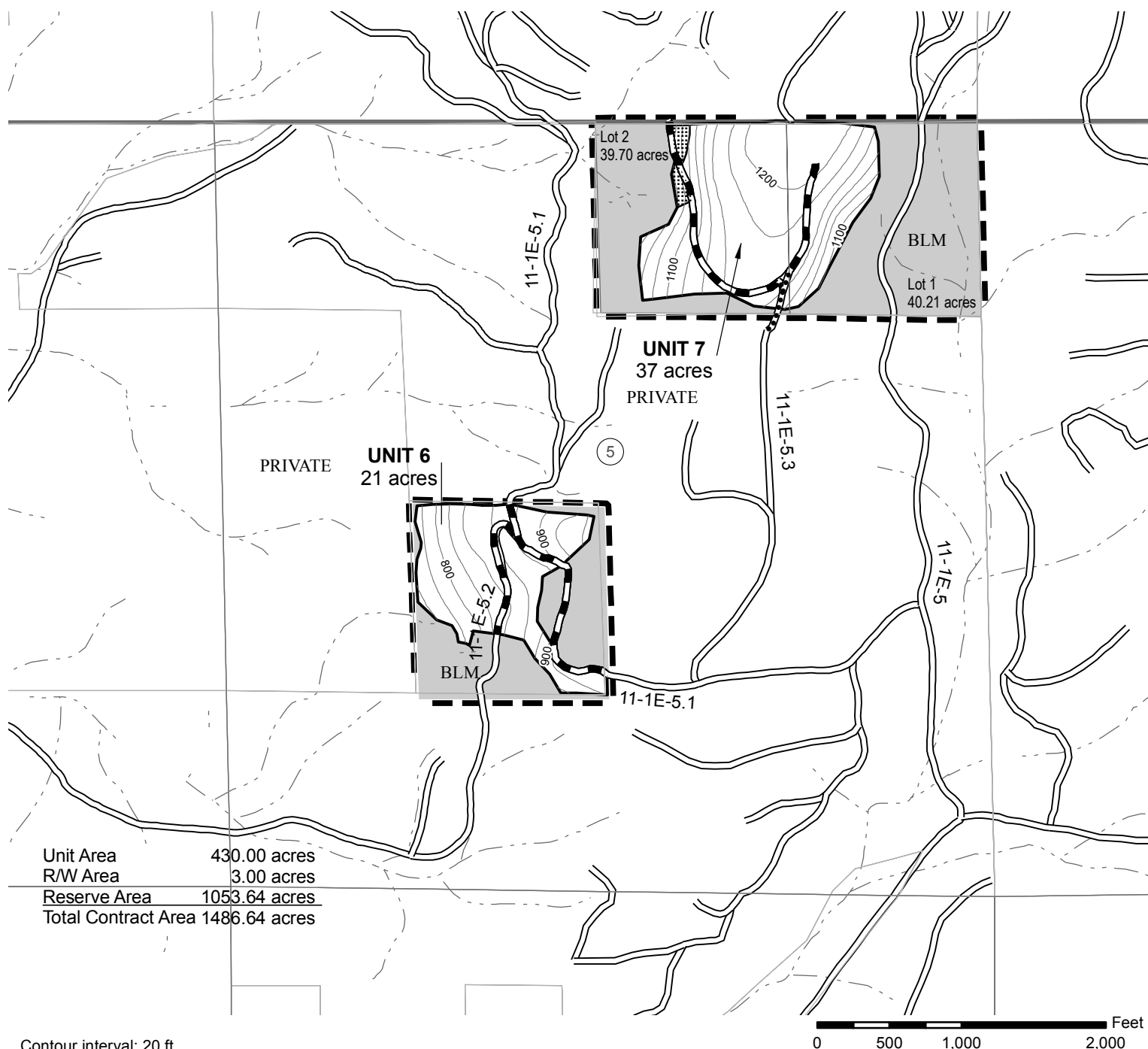
NOTES: Boundary of partial cut areas and rights of way of roads to be constructed and renovated are painted orange and posted. Unit acres do not include existing or new roads. Acres shown on Exhibit A have been computed using a Trimble Geo XT Global Positioning System Receiver. Acreage was calculated based on Global Positioning System traverse procedures including differential correction.

United States Department of Interior
BUREAU OF LAND MANAGEMENT
Salem District - Oregon
TIMBER SALE CONTRACT MAP - CONTRACT NO. ORS000-TS10-502
T. 11 S., R.1 E., Section 5, W.M.

Lost Lulay Thinning
Timber Sale

EXHIBIT A

Sheet 4 of 7



Right-of-Way Road to be constructed

Road to be improved

Road to be renovated

Earth/Debris Barricade

Gate

Existing road

Stream

Unit Area - Ground Based Yarding

Unit Area - Special Yarding

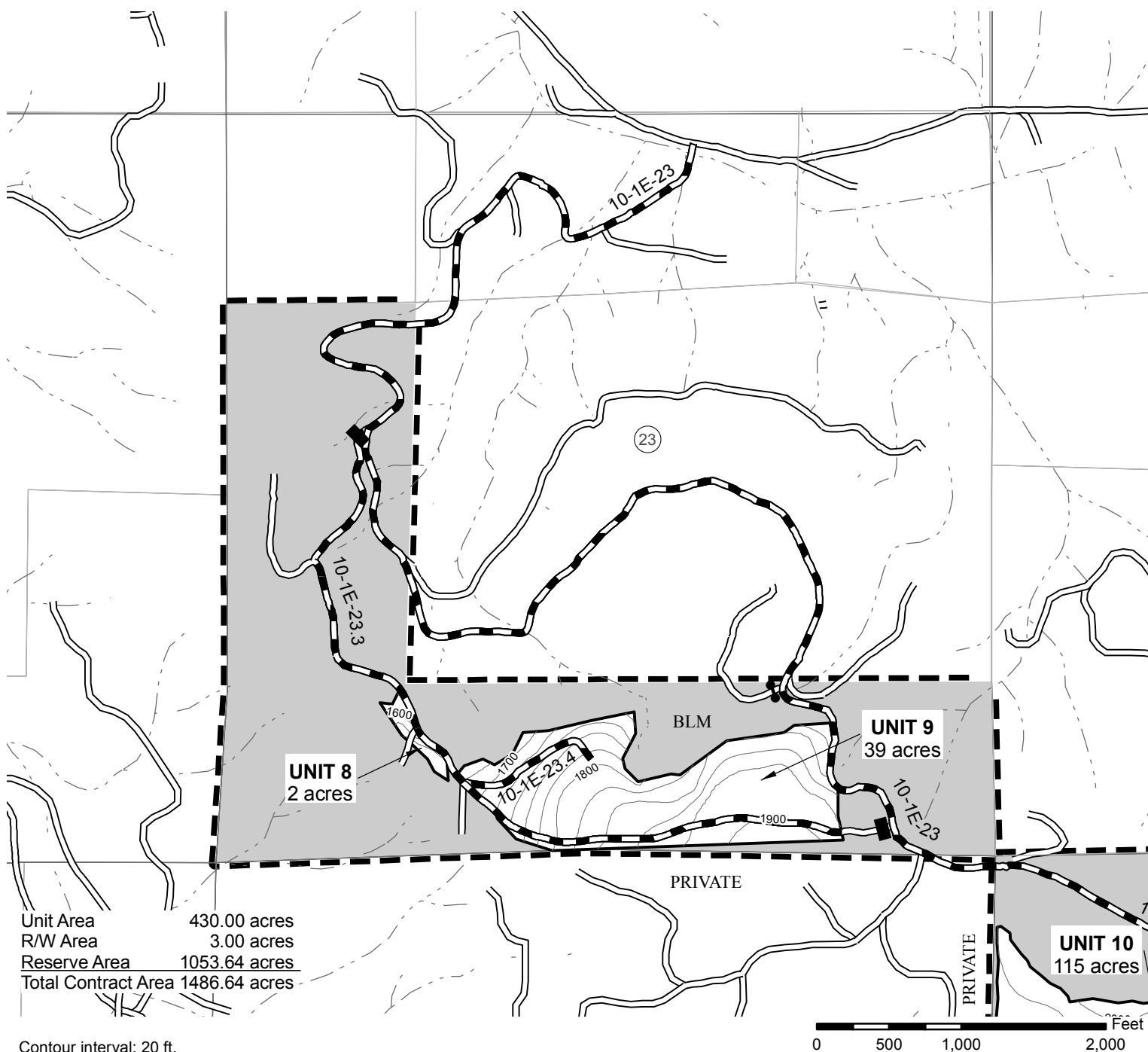
Boundary - Cutting Area

Boundary - Contract Area

Reserve Area

NOTES: Boundary of partial cut areas and rights of way of roads to be constructed and renovated are painted orange and posted. Unit acres do not include existing or new roads. Acres shown on Exhibit A have been computed using a Trimble Geo XT Global Positioning System Receiver. Acreage was calculated based on Global Positioning System traverse procedures including differential correction.

United States Department of Interior
BUREAU OF LAND MANAGEMENT
Salem District - Oregon
TIMBER SALE CONTRACT MAP - CONTRACT NO. ORS000-TS10-502
T. 10 S., R.1 E., Section 23, W.M.



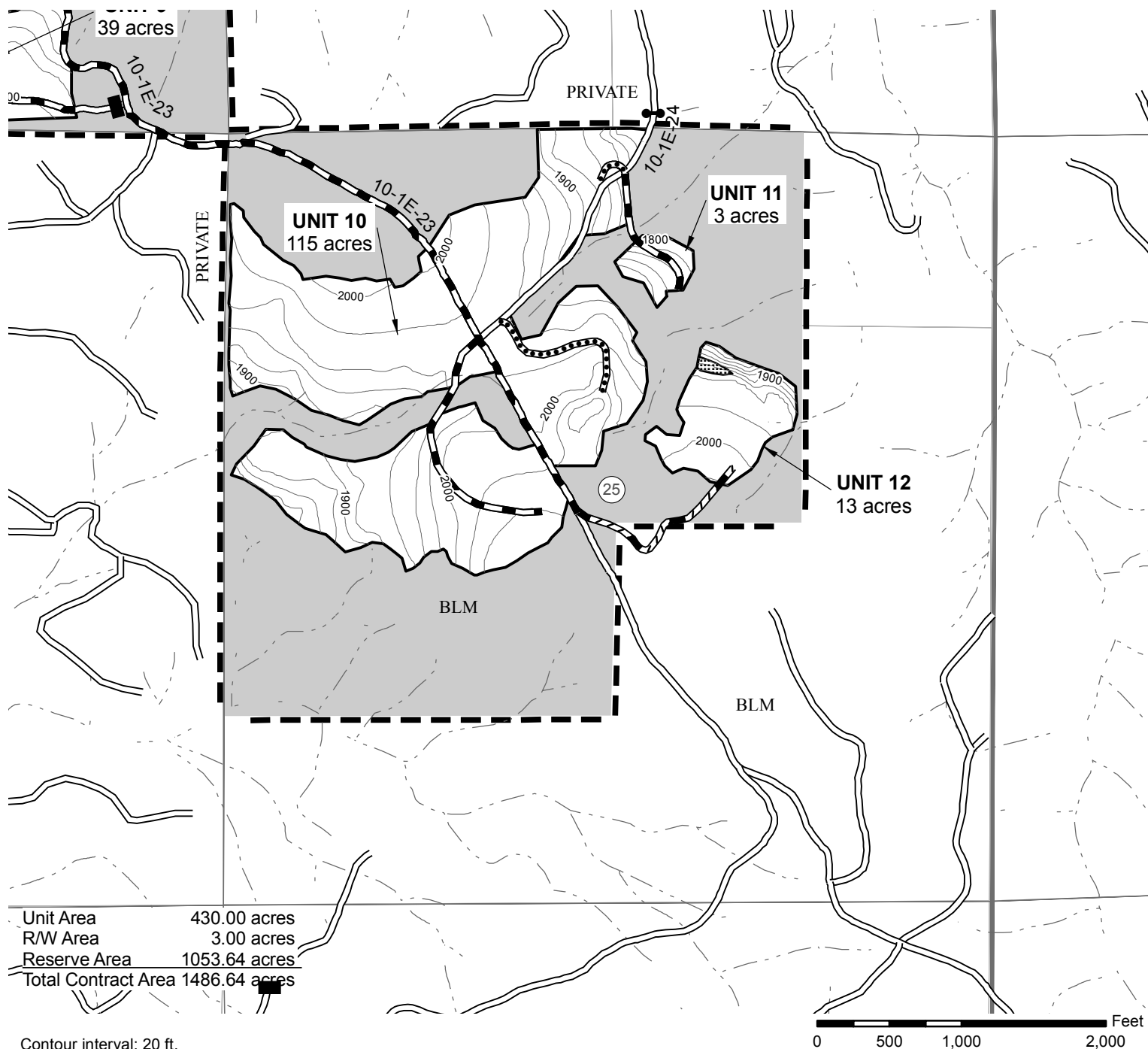
- Right-of-Way Road to be constructed
- Road to be improved
- Road to be renovated
- Earth/Debris Barricade
- Gate
- Existing road
- Stream

- Unit Area - Ground Based Yarding
- Unit Area - Special Yarding
- Boundary - Cutting Area
- Boundary - Contract Area
- Reserve Area



NOTES: Boundary of partial cut areas and rights of way of roads to be constructed and renovated are painted orange and posted. Unit acres do not include existing or new roads. Acres shown on Exhibit A have been computed using a Trimble Geo XT Global Positioning System Receiver. Acreage was calculated based on Global Positioning System traverse procedures including differential correction.

United States Department of Interior
BUREAU OF LAND MANAGEMENT
Salem District - Oregon
TIMBER SALE CONTRACT MAP - CONTRACT NO. ORS000-TS10-502
T. 10 S., R.1 E., Section 25, W.M.



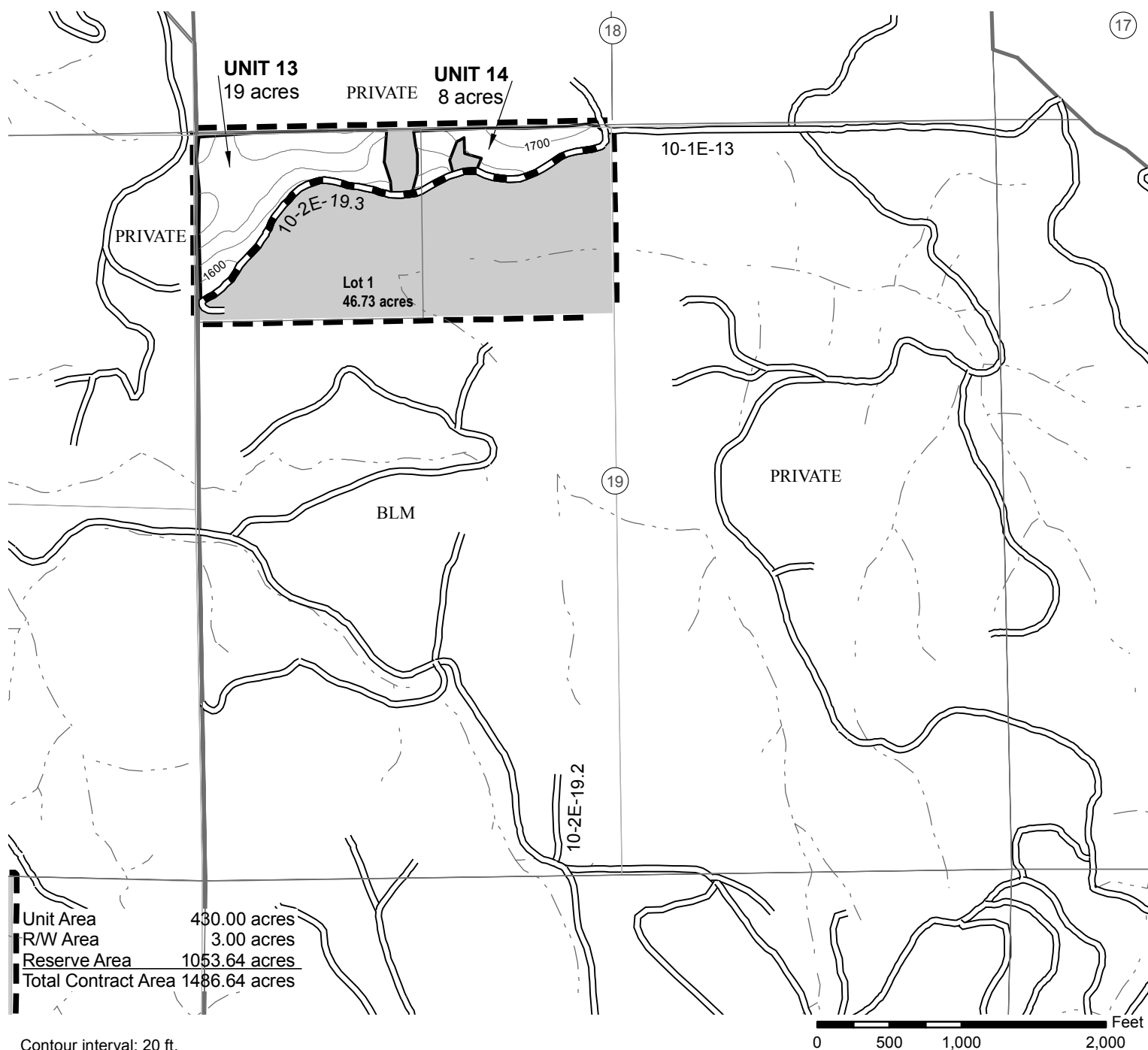
- Right-of-Way Road to be constructed
- Road to be improved
- Road to be renovated
- Earth/Debris Barricade
- Gate
- Existing road
- Stream

- Unit Area - Ground Based Yarding
- Unit Area - Special Yarding
- Boundary - Cutting Area
- Boundary - Contract Area
- Reserve Area



NOTES: Boundary of partial cut areas and rights of way of roads to be constructed and renovated are painted orange and posted. Unit acres do not include existing or new roads. Acres shown on Exhibit A have been computed using a Trimble Geo XT Global Positioning System Receiver. Acreage was calculated based on Global Positioning System traverse procedures including differential correction.

United States Department of Interior
BUREAU OF LAND MANAGEMENT
Salem District - Oregon
TIMBER SALE CONTRACT MAP - CONTRACT NO. ORS000-TS10-502
T. 10 S., R.2 E., Section 19, W.M.



- Right-of-Way Road to be constructed
- Road to be improved
- Road to be renovated
- Earth/Debris Barricade
- Gate
- Existing road
- Stream

- Unit Area - Ground Based Yarding
- Unit Area - Special Yarding
- Boundary - Cutting Area
- Boundary - Contract Area
- Reserve Area



NOTES: Boundary of partial cut areas and rights of way of roads to be constructed and renovated are painted orange and posted. Unit acres do not include existing or new roads. Acres shown on Exhibit A have been computed using a Trimble Geo XT Global Positioning System Receiver. Acreage was calculated based on Global Positioning System traverse procedures including differential correction.

TIMBER SALE NOTICE

THIS IS A SMALL BUSINESS SET-ASIDE SALE FOR PREFERENTIAL BIDDING BY SMALL BUSINESS CONCERNS AS DEFINED BY THE SMALL BUSINESS ADMINISTRATION.

SALEM DISTRICT
CASCADES RESOURCE AREA
SALEM MASTER UNIT

SALE DATE: September 15, 2010

ORS000-TS10-503, HIGHLAND FLING THINNING

CLACKAMAS COUNTY, OREGON: O&C: ORAL AUCTION: BID DEPOSIT REQUIRED: \$201,800.00

All timber designated for cutting on: NE¹/₄, NE¹/₄NW¹/₄, S¹/₂NW¹/₄, Section 35, T.3S., R.3E.; Lot1, Lot 2, S¹/₂NW¹/₄, N¹/₂SW¹/₄, W¹/₂SE¹/₄, SE¹/₄SE¹/₄, Section 1, T.4S., R.3E.; E¹/₂NE¹/₄, SW¹/₄NW¹/₄ Section 21, T.4S., R.3E.; NE¹/₄NE¹/₄ Section 27, T.4S., R.3E.; E¹/₂NE¹/₄ Section 29, T.4S., R.3E., W.M.

THIS TIMBER SALE HAS BEEN CRUISED BASED UPON EASTSIDE SCRIBNER MEASURE. Minimum bid figures shown by species are dollars per thousand board feet (MBF). The minimum bid increment will be \$0.10 per MBF.

| Approx. No. Merchantable Trees | Est. Vol. MBF 32' Log | Est. Vol. CCF | Species | Est. Vol. MBF 16' Log | Appraised Price Per MBF | Estimated Volume Times Appraised Price |
|--------------------------------------|-----------------------------|------------------|-------------------|-----------------------------|-------------------------------|--|
| 27,740 | 7,454 | 15,519 | Douglas-fir | 9,057 | \$212.30 | \$1,922,801.10 |
| 1,767 | 251 | 562 | Western Hemlock | 318 | \$142.60 | \$45,346.80 |
| 2,889 | 199 | 498 | Western Red Cedar | 245 | \$201.70 | \$49,416.50 |
| 32,396 | 7,904 | 16,579 | Totals | 9,620 | | \$2,017,564.40 |

LOG EXPORT AND SUBSTITUTION RESTRICTIONS: All timber offered for sale hereunder is restricted from export from the United States in the form of unprocessed timber and also prohibited from substitution of exported private timber.

CRUISE INFORMATION: The timber volumes were based on a Variable Plot cruise on 427 acres of partial cut and 100% cruise on 1 acre of right-of-way using form class tables for estimating board feet volume of trees in 16-foot logs. Approximately 0% of the total sale volume is salvage material. With respect to merchantable trees of all species; the average tree is 15.9 inches DBHOB; the average log contains 61 board feet; the total gross volume is approximately 10,154 MBF; and 95% recovery is expected.

CUTTING AREA: Twelve units totaling approximately 427 acres shall be partial cut and approximately 1 acre of Right-of-Way shall be clearcut. Acres shown for Units on Exhibit A have been computed using a Trimble GeoXT Global Positioning System receiver. Acreage was calculated based on Global Positioning System traverse procedures including differential correction. Acreage for the Right-of-Way Areas shown on Exhibit A was calculated from the traversed road length and average width of the posted Right-of-Way boundaries and subtracted from gross unit acreage.

CONTRACT TERMINATION: A revised Special Provision has been added to the contract which enables the Contracting Officer to suspend the contract to facilitate protection of certain plant or animal species, and /or to modify or terminate the contract when necessary to:

1. Comply with the Endangered Species Act, or;
2. Comply with a court order, or;
3. Protect occupied marbled murrelet sites in accordance with the Standards and Guidelines of the Salem District Record of Decision (ROD) and Resource Management Plan (RMP), or;
4. Protect species which were identified for protection through survey and manage and/or protection buffer standards and guidelines established in the ROD and RMP.

This contract provision limits the liability of the Government to the actual costs incurred by the Purchaser which have not been amortized by timber removed from the contract area.

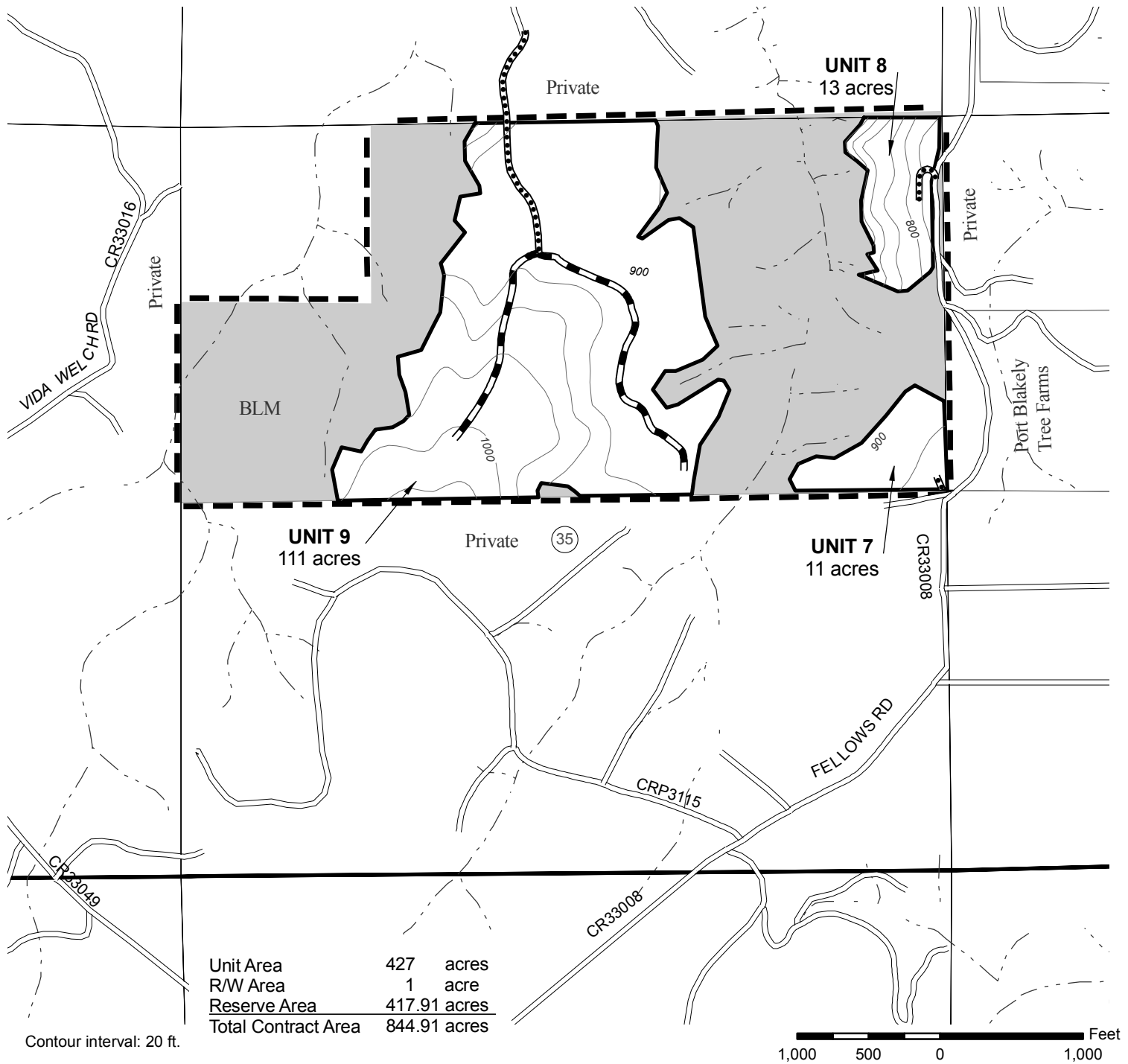
DURATION OF CONTRACT: Will be 36 months for cutting and removal of timber.

United States Department of Interior
BUREAU OF LAND MANAGEMENT
Salem District - Oregon
TIMBER SALE CONTRACT MAP - CONTRACT NO. ORS000-TS10-503
T. 3 S., R. 3 E., Section 35

Highland Fling
Thinning

EXHIBIT A

Sheet 1 of 5



- Right-of-Way Road to be constructed
- Right-of-Way Road to be constructed - Logger's choice
- Road to be renovated
- Existing Road
- Earth/Debris Barricade
- Gate
- Stream

- Partial Cut Area - Ground base yarding
- Boundary - Contract Area
- Boundary - Cutting Area
- Reserve Area



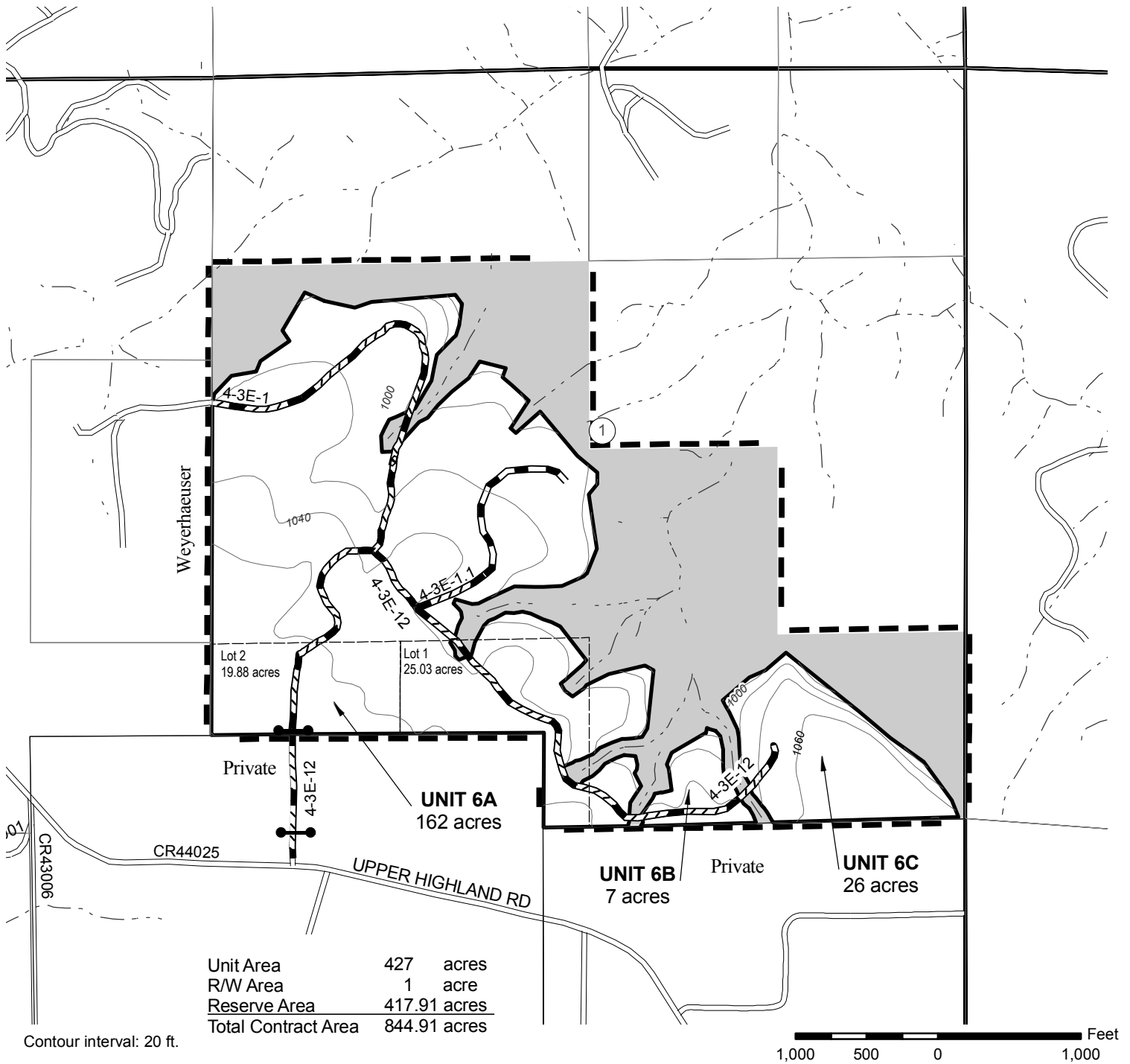
NOTES: Boundary of partial cut areas and rights of way of roads to be constructed and renovated are painted orange and posted. Unit acres do not include existing or new roads. Acres shown on Exhibit A have been computed using a Trimble Geo XT Global Positioning System Receiver. Acreage was calculated based on Global Positioning System traverse procedures including differential correction.

United States Department of Interior
BUREAU OF LAND MANAGEMENT
Salem District - Oregon
TIMBER SALE CONTRACT MAP - CONTRACT NO. ORS000-TS10-503
T. 4 S., R. 3 E., Section 1

Highland Fling
Thinning

EXHIBIT A

Sheet 2 of 5



- Right-of-Way Road to be constructed
- Right-of-Way Road to be constructed - Logger's choice
- Road to be renovated
- Existing Road
- Earth/Debris Barricade
- Gate
- Stream

- Partial Cut Area - Ground base yarding
- Boundary - Contract Area
- Boundary - Cutting Area
- Reserve Area



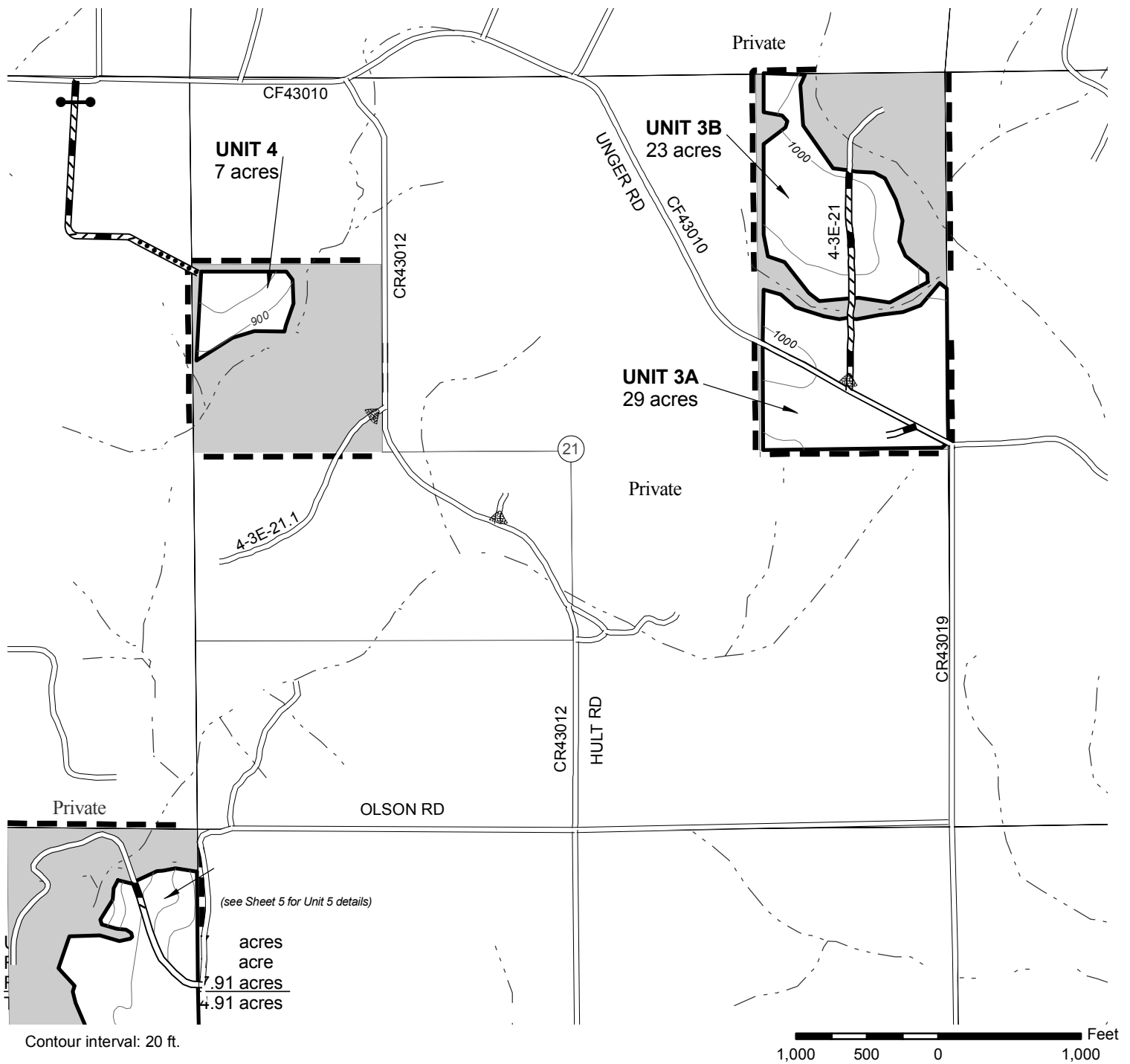
NOTES: Boundary of partial cut areas and rights of way of roads to be constructed and renovated are painted orange and posted. Unit acres do not include existing or new roads. Acres shown on Exhibit A have been computed using a Trimble Geo XT Global Positioning System Receiver. Acreage was calculated based on Global Positioning System traverse procedures including differential correction.

United States Department of Interior
BUREAU OF LAND MANAGEMENT
Salem District - Oregon
TIMBER SALE CONTRACT MAP - CONTRACT NO. ORS000-TS10-503
T. 4 S., R. 3 E., Section 21

Highland Fling
Thinning

EXHIBIT A

Sheet 3 of 5



- Right-of-Way Road to be constructed
- Right-of-Way Road to be constructed - Logger's choice
- Road to be renovated
- Existing Road
- Earth/Debris Barricade
- Gate
- Stream

- Partial Cut Area - Ground base yarding
- Boundary - Contract Area
- Boundary - Cutting Area
- Reserve Area



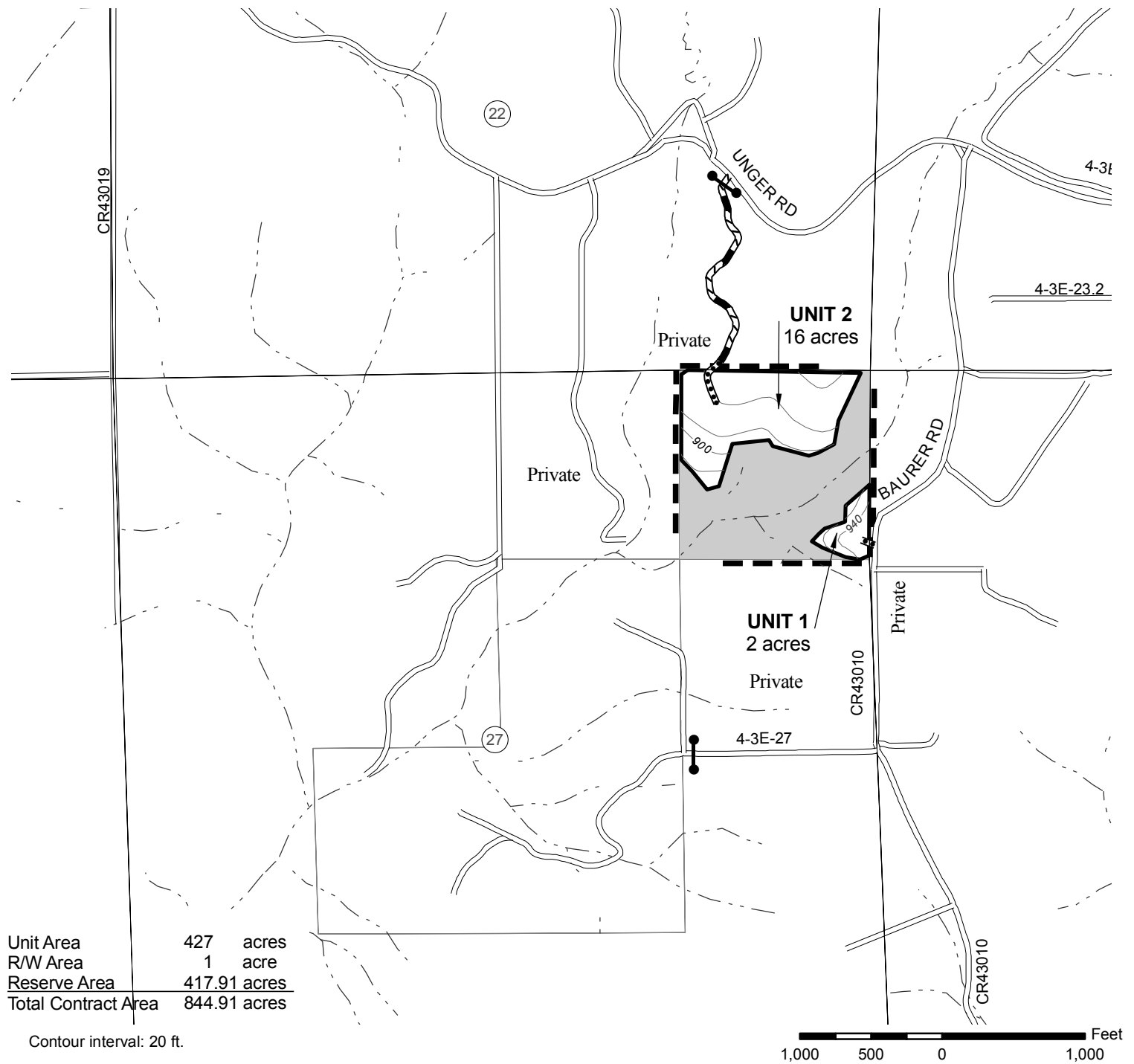
NOTES: Boundary of partial cut areas and rights of way of roads to be constructed and renovated are painted orange and posted. Unit acres do not include existing or new roads. Acres shown on Exhibit A have been computed using a Trimble Geo XT Global Positioning System Receiver. Acreage was calculated based on Global Positioning System traverse procedures including differential correction.

United States Department of Interior
BUREAU OF LAND MANAGEMENT
Salem District - Oregon
TIMBER SALE CONTRACT MAP - CONTRACT NO. ORS000-TS10-503
T. 4 S., R. 3 E., Sections 27

Highland Fling
Thinning

EXHIBIT A

Sheet 4 of 5



- Right-of-Way Road to be constructed
- Right-of-Way Road to be constructed - Logger's choice
- Road to be renovated
- Existing Road
- Earth/Debris Barricade
- Gate
- Stream

- Partial Cut Area - Ground base yarding
- Boundary - Contract Area
- Boundary - Cutting Area
- Reserve Area



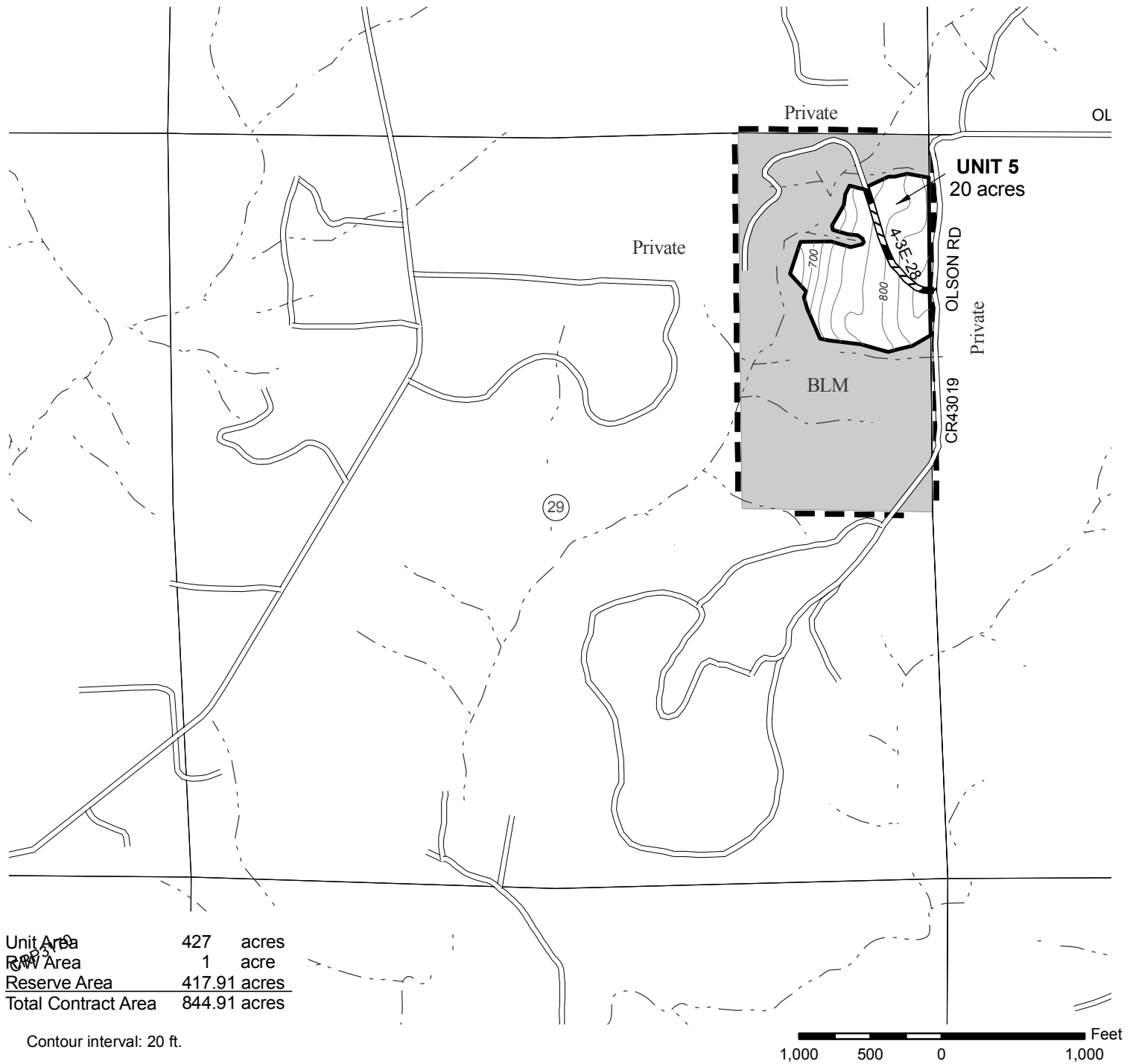
NOTES: Boundary of partial cut areas and rights of way of roads to be constructed and renovated are painted orange and posted. Unit acres do not include existing or new roads. Acres shown on Exhibit A have been computed using a Trimble Geo XT Global Positioning System Receiver. Acreage was calculated based on Global Positioning System traverse procedures including differential correction.

United States Department of Interior
BUREAU OF LAND MANAGEMENT
Salem District - Oregon
TIMBER SALE CONTRACT MAP - CONTRACT NO. ORS000-TS10-503
T. 4 S., R.3 E., Section 29

Highland Fling
Thinning

EXHIBIT A

Sheet 5 of 5



- Right-of-Way Road to be constructed
- Right-of-Way Road to be constructed - Logger's choice
- Road to be renovated
- Existing Road
- Earth/Debris Barricade
- Gate
- Stream

- Partial Cut Area - Ground base yarding
- Boundary - Contract Area
- Boundary - Cutting Area
- Reserve Area



NOTES: Boundary of partial cut areas and rights of way of roads to be constructed and renovated are painted orange and posted. Unit acres do not include existing or new roads. Acres shown on Exhibit A have been computed using a Trimble Geo XT Global Positioning System Receiver. Acreage was calculated based on Global Positioning System traverse procedures including differential correction.

Form 5440-9
July 1990)

UNITED STATES
DEPARTMENT OF THE INTERIOR
BUREAU OF LAND MANAGEMENT

FORM APPROVED
OMB NO.1004-0113
Expires: July 31, 1992

DEPOSIT AND BID FOR

TIMBER*
VEGETATIVE RESOURCE
(Other Than Timber)

LUMP SUM SALE

Tract Number

Sale Name

Sale Notice (dated)

BLM District

Sealed Bid for Sealed Bid Sale

Written Bid for Oral Auction Sale

In response to the above dated Sale Notice, the required deposit and bid are hereby submitted for the purchase of designated timber/vegetative resource on the tract specified above.

Required bid deposited is \$ and is enclosed in the form of cash money order bank draft cashier's check certified check bid bond of corporate surety on approved list of the United States Treasury guaranteed remittance approved by the authorized officer.

IT IS AGREED That the bid deposit shall be retained by the United States as liquidated damages if the bid is accepted and the undersigned fails to execute and return the contract, together with any required performance bond and any required payment within 30 days after the contract is received by the successful bidder. It is understood that no bid for less than the appraised price on a unit basis per species will be considered. If the bid is rejected the deposit will be returned.

BID SCHEDULE - LUMP SUM SALE

NOTE: Bidders should carefully check computations in completing the Bid Schedule

| BID SUBMITTED | | | | | ORAL BID MADE | |
|----------------------|------|------------------------------------|------------|-------------|---------------|-------------|
| PRODUCT SPECIES | UNIT | ESTIMATED VOLUME OR QUANTITY | UNIT PRICE | TOTAL VALUE | UNIT PRICE | TOTAL VALUE |
| | MBF | x = | | | x = | |
| | MBF | x = | | | x = | |
| | MBF | x = | | | x = | |
| | MBF | x = | | | x = | |
| | MBF | x = | | | x = | |
| | MBF | x = | | | x = | |
| | MBF | x = | | | x = | |
| | MBF | x = | | | x = | |
| | MBF | x = | | | x = | |
| | MBF | x = | | | x = | |
| | MBF | x = | | | x = | |
| | MBF | x = | | | x = | |
| | MBF | x = | | | x = | |
| | MBF | x = | | | x = | |
| | MBF | x = | | | x = | |
| TOTAL PURCHASE PRICE | | | | | | |

If sale contract is executed, undersigned is liable for total purchase price even though the quantity cut, removed, or designated for taking is more or less than the total estimated volume or quantity shown above. Undersigned certifies bid was arrived at by bidder or offeror independently, and was tendered without collusion with any other bidder or offeror. In submitting or confirming this bid, undersigned agrees to the foregoing provisions, applicable regulations, and certifies that he is authorized to act as, or on behalf of, the bidder.

Bid submitted on *(date)*

(Check appropriate box, sign in ink, and complete the following)

| | |
|--|--|
| <input type="checkbox"/> Signature, if firm is individually owned | Name of firm <i>(type or print)</i> |
| <input type="checkbox"/> Signatures, if firm is a partnership | Business address, include zip code <i>(type or print)</i> |
| <input type="checkbox"/> Corporation organized under the state laws of | (To be completed following oral bidding) |
| Signature of Authorized Corporate Signing Officer | I HEREBY confirm the above oral bid By (signature) |
| Title | Date |
| Submit bid, in duplicate, to qualify for either an oral auction or sealed bid sale together with the required bid deposit made payable to the Department of the Interior-BLM | Sealed Bid - Send to District Manager. who issued the sale notice. in a sealed envelope marked on the outside: |
| Oral Auction - Submit to Sales Supervisor prior to closing of qualifying period for tract. | (1) "Bid for Timber" (2) Vegetative Resource Other Than Timber (3) Time bids are to be opened (4) Legal description |

The Paperwork Reduction Act of 1980 (44 U.S.C. 3501 et. seq.) requires us to inform you that:

This information is being collected to obtain data relevant to the operation of this timber sale contract.

This information will be used to administer our timber sale program.

Response to this request is required to obtain a benefit.

NOTICE

The Privacy Act of 1974 and the regulation in 43 CFR 2.48(d) provide that you be furnished the following information in connection with information required by this application.

AUTHORITY: 38 FR 6280 and 43 CFR 5442.1

PURPOSE: To qualify an oral auction bidder, and then if successful, to bind bidder to certain contract conditions.

ROUTINE USE: To determine that an individual is qualified to participate in oral auction bidding, and, as surety that bidder will fulfill contract requirements.

EFFECT OF NOT PROVIDING INFORMATION: Filing this deposit and bid information is necessary only when an individual wishes to participate in a sealed or auction bid sale for timber or vegetative resources.

BURDEN HOURS STATEMENT

Public reporting burden for this form is estimated to average 1 hr. 15 mm. per response, including the time for reviewing instructions, gathering and maintaining data, and completing and reviewing the form. Direct comments regarding the burden estimate or any other aspect of this form to U.S Department of the Interior, Bureau of Land Management, (Alternate) Bureau Clearance Officer, (WO-771), 18 and C Streets, N.W. Washington, D.C. 20240, and the Office of Management and Budget, Paperwork Reduction Project (1004-0113), Washington, D.C. 20503.

INSTRUCTIONS TO BIDDERS

1. **AUTHORITY** - Timber located on the revested Oregon and California Railroad Grant Lands and on the reconveyed Coos Bay wagon Road Grant Lands is administered and sold pursuant to authority of the Act of August 28, 1937 (50 Stat. 874; 43 U.S.C. 1181a); timber located on other lands and other vegetative resources on all public lands of the United States under jurisdiction of the Bureau of Land Management are administered and sold pursuant to authority of the Act of July 31, 1947 (61 Stat. 681), as amended, by the Act of July 23, 1955 (69 Stat. 367; 30 U.S.C. 601 et. seq.). Regulations of the Secretary of the Interior governing sale of timber are codified in 43 CFR Group 5400.

2. **QUALIFICATIONS OF BIDDERS** - A bidder for sale of timber/vegetative resources must be either (a) a citizen of the United States, (b) a partnership composed wholly of such citizens, (c) an unincorporated association composed wholly of such citizens, or (d) a corporation authorized to transact business in the State in which the timber/vegetative resource is located.

3. **INSPECTION OF TIMBER/VEGETATIVE RESOURCES** - Bidder is invited, urged, and cautioned to inspect the timber/vegetative resource prior to submitting a bid. By executing the timber/vegetative resource sale contract, bidder warrants that the contract is accepted on the basis of his examination and inspection of the timber/vegetative resource and his opinion of its value.

4. **DISCLAIMER OF WARRANTY** - Government expressly disclaims any warranty of the fitness of the designated timber/vegetative resource for any purpose of the bidder; all timber/vegetative resources are to be sold "As Is" without any warranty of merchantability by Government. Any warranty as to the quantity or quality of timber/vegetative resource to be sold is expressly disclaimed by Government.

5. **BIDS** - Sealed or written bids for not less than the advertised appraised price, per timber/vegetative resource must be submitted in duplicate to the District Manager who issued Timber/Vegetative Resource Sale Notice.

(a) **Sealed Bid Sales** - Bids will be received until time for opening which is set out in the Notice. Enclose both copies of bid with required bid deposit in a sealed envelope marked on the outside *Rid for Timber/Vegetative Resource*. time bid is to be opened, tract number, and legal description of land on which timber/vegetative resource is located. In event of a tie, the high bidder shall be determined by lot from among those who submitted the tie bids.

(b) **Auction Sales** - Submission of the required bid deposit and a written bid is required to qualify for oral bidding. Oral bidding shall begin from the highest written bid. No oral bid will be considered which is not higher than the preceding bid. In the event there is a tie in high written bids, and no oral bidding occurs, the bidder who was the first to submit his bid deposit and written bid shall be declared the high bidder. If the officer conducting the sale cannot determine who made the first submission of high tie written bids, the high bidder shall be determined by lot. High bidder must confirm his bid, in writing, immediately upon being declared high bidder.

(c) Except as otherwise provided in 43 CER 5442.2, bids will not be considered in resale of timber/vegetative resource remaining from an uncompleted contract from any person or affiliate of such person who failed to complete the original contract because of (1) cancellation for the purchaser's breach or (2) through failure to complete payment by expiration date.

(d) When it is in the interest of the Government to do so, it may reject any and all bids and may waive minor deficiencies in bids or in sale advertisement.

6. **BID FORMS** - All sealed, written bids, and confirmation of oral bids shall be submitted on forms provided by Government.

(a) **Lump Sum Sales** - Bids shall specify (1) Bureau of Land Management estimated volume, (2) price per unit, and (3) total purchase price. Estimated volume and price per unit are to be used for administrative and appraisal purposes only. Upon award of contract, high bidder shall be liable for total purchase price, including any adjustment which may be made as a result of reappraisal if an extension of time is granted, even though quantity of timber/vegetative resource actually cut, removed, or designated for taking is more or less than the estimated volume or quantity listed.

(b) **Timber Scale Sales** - Bids must state price per thousand board feet that will be paid for each species. High bidder will be determined by multiplying bid price per thousand board feet per species by Bureau of Land Management estimate of volume of each species. Purchaser shall be liable for purchase price of all merchantable timber sold under contract even though all such timber is not actually cut and removed prior to expiration of time for cutting and removal as specified in contract. *

7. **BID DEPOSIT** - All bidders must make a deposit of not less than the amount specified in the *Timber/Vegetative Resource Notic*. Deposit may be in the form of cash, money orders, bank drafts, cashiers or certified checks made payable to the Department of the Interior-BLM, bid bonds of a corporate surety shown on the approved list of the United States Treasury Department*, or any approved guaranteed remittance approved by the Authorized Officer. Upon conclusion of bidding, the bid deposit of all bidders, except high bidder, will be returned. The cash deposit of the successful bidder may be applied toward the required sale deposit and/or the purchase price. Cash not applied to the sale deposit or the purchase price, or a corporate surety bid band, will be returned at the time the contract is signed by the Government.

8. **A WARD OF CONTRACT** - Government may require high bidder to furnish such information as is necessary to determine the ability of bidder to perform the obligation of contract. Contract will be awarded to high bidder, unless he is not qualified or responsible or unless all bids are rejected. If high bidder is not qualified or responsible or fails to sign and return the contract together with required performance bond and any required payment, contract may be offered and awarded to the highest bidders qualified, responsible, and willing to accept the contract.

9. **TIMBER/VEGETATIVE RESOURCE SALE CONTRACT** - To be executed by purchaser, has been prepared by Government, and may be examined in the District Manager's office.

10. **PERFORMANCE BOND** -

(a) A performance bond in an amount of not less than 20 percent of total purchase price is required, but the amount of the bond shall not be in excess of \$500,000, except when the purchaser opts to increase the minimum bond to permit cutting prior to payment as provided in 43 CFR 5451.2, or in the event the purchaser is a holder of an unresolved default the bond may be increased as provided in 43 CFR 5150.1(b). Performance bond may be (1) bond of a corporate surety shown on approval list issued by the United States Treasury Department and executed on an approved standard form, (2) personal surety bond executed on an approved standard form if Government determines principals and bondsman are capable of carrying Out the terms of the contract, (3) cash bonds, (4) negotiable securities of the United States, or (5) Any guaranteed remittance approved by the Authorized Officer.

(b) If purchaser elects to cut timber without skidding or yarding it to a loading point or removing it prior to the payment of the second or subsequent installments, Government shall require an increase in amount of performance bond initially required by an amount equal to the value of timber to be cut. Such increase must be on 5 bond rider form supplied by Government and be approved, in writing, by Government prior to cutting timber covered by the bond increase. This increased amount of bond shall be used to assure payment for timber cut in advance of payment.*

11. **PAYMENT BOND** - If purchaser elects to (a) cut and remove timber, or (b) remove timber already cut which has been secured by an increased performance bond as provided in paragraph 10(b) above, before payment of the second or subsequent installments, Government shall require a payment bond on a form supplied by Government. Purchaser shall obtain written approval from Government of payment bond prior to cutting and/or removal of timber covered by the bond. Payment bond shall be used to assure payment for timber cut and/or removed in advance of payment. *

12. **PAYMENT OF PURCHASE PRICE** - For sales of \$500 or more, Government may allow payment by installments. Except as discussed in paragraphs 10 and 11 above, no part of any timber/vegetative resource sold may be severed, cut, or removed unless advance payment has been made as provided in contract.

13. **LIQUIDATED DAMAGES** - Within thirty (30) days from receipt of *Timber Vegetative Resource Sale Contract*, the successful bidder shall sign contract and return it to Government, together with required bond and any required payment. If successful bidder fails to comply within the stipulated time, his bid deposit shall be retained by Government as liquidated damages.

14. **NINETY-DAY SALES** - If no bid is received within time specified in the advertisement of sale and if Government determines that there has been no significant rise in the market value of timber/vegetative resource, it may, in its discretion, keep the sale open, not to exceed ninety (90) days.

15. **UNAUTHORIZED USE OF GOVERNMENT PROPERTY** - A sale may be refused to high bidder who has been notified that he has failed to make satisfactory arrangements for payment of damages resulting from unauthorized use of, or injury to, property of the United States.

EQUAL OPPORTUNITY CLAUSE - This contract is subject to the provisions of Executive Order No. 11246 of September 24, 1965, as amended, which sets forth the nondiscrimination clauses. Copies of this order may be obtained from the District Manager. 43 CFR 60-1.7(b) requires that the Equal Opportunity *Compliance Report Certification* will be completed by prospective contractors. Certification may be obtained from District Manager.

17.LOG EXPORT - All timber offered for sale except as noted in the *Timber Sale Notice* is restricted from export from the United States in the form of unprocessed timber and cannot be used as a substitute for exported private timber. For the purpose of this contract, unprocessed timber is defined as: (1) any logs except those of utility grade or below, such as sawlogs, peeler logs, and pulp logs; (2) cants or squares to be subsequently remanufactured exceeding eight and three quarters (8-3/4) inches in thickness; (3) split or round bolts or other roundwood not processed to standards and specifications suitable for end product use; or (4) western red cedar lumber which does not meet lumber of American Lumber Standards Grades of Number 3 dimension

or better, or Pacific Lumber Inspection Bureau R-List Grades of Number 3 common or better. Timber manufactured into the following will be considered processed.. (1) lumber and construction timbers, regardless of size, manufactured to standards and specifications suitable for end product uses; (2) chips, pulp and pulp products; (3) green or dry veneer and plywood; (4) poles and piling cut or treated for use as such; (5) cants, squares, and lumber cut for remanufacture of eight and three quarters (8-3/4) inches in thickness or less, or (6) shakes and shingles. in event purchaser wishes to sell any or all of timber restricted from export in the form of unprocessed timber. the buyer, exchanges, or recipient shall be required to comply with contractual provisions relating to "*unprocessed timber*." Special reporting, branding and painting of logs may be included in contract provisions. *

18.DETAILED INFORMATION - Detailed information concerning contract provisions, hid, performance bond forms, tract location maps, and access conditions may be obtained from the District Manager. All persons interested in bidding on the products listed are encouraged to familiarize themselves with all such detailed information.

UNITED STATES
DEPARTMENT OF THE INTERIOR
BUREAU OF LAND MANAGEMENT

NOTICE OF REQUIREMENT FOR CERTIFICATION
OF NONSEGREGATED FACILITIES

Bidders and offerors are cautioned as follows: by signing this bid or offer or entering into this contract or lease, as the case may be, the bidder, offeror, or contractor will be deemed to have signed and agreed to the provisions of the Certification of Nonsegregated Facilities in this solicitation. The certification provides that the bidder or offeror does not maintain or provide for his employees facilities which are segregated on a basis of race, color, religion, sex, or national origin, whether such facilities are segregated by directive or on a de facto basis. The certification also provides that he will not maintain such segregated facilities. Failure of a bidder or offeror to agree to the Certification of Nonsegregated Facilities will render his bid or offer nonresponsive to the terms of solicitations involving awards of contract exceeding \$10,000 which are not exempt from the provisions of the Equal Opportunity clause.

In accordance with 41 CFR 60, as amended May 19, 1967, and Executive Order No. 11246 of September 24, 1965, as amended, this notification will be included in all notices of invitations for bid, lease, offers, and requests for proposal where prospective nonexempt contracts may exceed \$10,000.

UNITED STATES
DEPARTMENT OF THE INTERIOR
BUREAU OF LAND MANAGEMENT

EXPORT DETERMINATION

OMB CLEARANCE
NO. 1004-0058 EXPIRES MAY 31, 1983

Location of facility where Federal Timber is expected to be processed.

INSTRUCTIONS

Timber sale applicant forwards information to authorized officer.

In compliance with requirements of 43 CFR 5424, ☐ I ☐ We hereby submit the following information:

(1) Have you exported private timber from lands tributary to the above processing facility within the last 12 months?

☐ Yes ☐ No (If Yes, give date of last export sale.)

a. Export (date)_____

(2) Provide names of affiliates* who have exported private timber from lands tributary to the above processing facility within the last 12 months and date of last export sale.

a. Affiliate_____ Export date_____

b. Affiliate_____ Export date_____

c. Affiliate_____ Export date_____

*See 43 CFR 5424.0-5

Name of Firm

Signature of Signing Officer

Title

Date

Form 5450-17 (June 1981)

The Bureau of Land Management collects this information pursuant to the law(see 43 CFR 5400.0-3(c)).

The Bureau of Land Management uses the information to determine whether Federal timber has been substituted for exported private timber (see 43 CFR 5400.0-5(n) and 5424.0-6(c)(2)).

A Bureau of Land Management timber purchaser is obligated to report this information under provisions of the above-numbered contract (see 43 CFR 5424.1).

| | |
|---------------|-----------|
| Agency Forest | Sale Name |
|---------------|-----------|

**SMALL BUSINESS CERTIFICATION REQUIRED ON
ALL PREFERENTIAL SALES OF SET-ASIDE TIMBER**

The purchaser certifies, at the time of executing timber sale Contract No. _____, to which this statement is annexed, that in accordance with the Rules and Regulations (13 CFR 121) of the Small Business Administration (SBA):

1. His firm (a) is primarily engaged in the logging or forest products industry; (b) is independently owned and operated; (c) is not dominant in its field of operation; and (d) employs, together with its affiliates, 500 or fewer persons.

2. (a) He agrees not to sell and/or exchange more than 30 percent (50 percent in the case of Alaska) of the timber of log volume from this preferential sale to concerns not meeting SBA's small business size standard. Such timber and log volume comprises logs, bolts and pieces that are suitable for manufacture into lumber dimension and/or veneer and normally appraised as such. Timber and log volume of the preferential sale includes the contract rights, standing and down trees or portions thereof.

- (b) Whenever he does sell and/or exchange timber or logs from this preferential sale, records of such transactions will be maintained for a period of three years showing the name, address, and SBA size status (i.e., whether large or small) of each concern to whom the timber or logs were sold or disposed and the species, grades and volumes involved. In the event of such sale or sales, purchaser shall also require other purchasers to maintain similar records for a period of three years (OMB Approval No. 0596-0021). A signed certificate similar to this one will be obtained from each party buying such timber and will be retained for review in event of investigation.

- (c) If his concern is purchased by, becomes controlled by, or merged with a large business, so much of such timber and log volume from this preferential sale as is necessary will be sold (not bartered) to one or more small businesses for compliance with the 30 percent (50 percent in the case of Alaska) restriction.

3. He agrees that if he utilizes log volume from this preferential sale in the manufacture of a product, such manufacture will be done with his own facilities or those of another concern that qualifies as a small business.

4. He understands that in addition to other penalties which may be imposed for violating the foregoing, he may be declared ineligible to participate in future Federal timber sales.

Signed _____

Date _____

UNITED STATES
DEPARTMENT OF THE INTERIOR
BUREAU OF LAND MANAGEMENT

SELF CERTIFICATION CLAUSE
BIDDERS STATEMENT

The bidder represents that he ☐ is ☐ is not a small business concern as defined by Title 13, Chapter 1, Part 121 of the Code of Federal Regulations, as amended.

(Date)

(Signature of Bidder)

Title 18 USC, sec. 1001, makes it a crime for any person knowingly and willfully to make to any department or agency of the United States any false, fictitious or fraudulent statements or representations as to any matter within its jurisdiction.

INSTRUCTIONS

In order to qualify for a set-aside sale, all bidders must certify to being a small business concern by submitting an executed Self Certification Clause.

The date on the Self Certification Clause and the sale date must be the same.

A Self Certification Clause must accompany the deposit to qualify for each set-aside sale. After a sale award is made,

the Self Certification Clause will be immediately returned, with the deposit, to the unsuccessful bidders but may be resubmitted to qualify for other set-aside sales offered on the same date.

The Self Certification Clause submitted by the successful bidder will be retained by the Bureau of Land Management.