

# Roseburg District BLM Planning Update



Spring 2014

March 5, 2014

Dear Citizen:

The Quarterly Planning Update is published with the intent of providing current information about discretionary management actions being undertaken, specific projects and future events planned on the Roseburg District of the Bureau of Land Management (BLM).

With publication of a Notice of Intent in the Federal Register, on March 9, 2012, the BLM began the process of revising resource management plans for the Salem, Eugene, Roseburg, Coos Bay, and Medford Districts, and Klamath Falls Resource Area of the Lakeview District. In December 2013, the Roseburg District hosted a listening session, and has scheduled an additional public meeting on March 10, 2014, from 5:00 to 8:30 PM in the Floral Building at the Douglas County Fairgrounds. Completion of this planning effort is anticipated by June 30, 2015. Additional information on this effort is available at <http://www.blm.gov/or/plans/rmpswesternoregon/>.

The Roseburg District continues work on the Vegetation Management Activities Using Herbicides Environmental Assessment. Additional information may be found at <http://www.blm.gov/or/districts/roseburg/plans/vegea.php>

The Roseburg and Medford BLM Districts have formed a team to manage the Southwest Oregon Fire Recovery effort. In addition to field trips for interested parties, two Open Houses and a workshop were held. The Medford District is formulating alternatives for timber salvage on Matrix lands affected by the Douglas Fire Complex. The Roseburg District has begun developing potential alternatives for treatment of Late-Successional Reserves on the Roseburg District portions of the Rabbit Mountain Fire that will address the safety of individuals travelling through and working in the burned areas, maintaining the integrity of railroad and utility rights-of-way that pass through the burned areas, and providing for the integrity and safe use of other facilities that may be present.

We will keep you updated on further developments through the Quarterly Planning Update and the district website at: <http://www.blm.gov/or/districts/roseburg/plans/index.php>. As in previous updates, this edition contains information on a wide array of work proposed or underway on the Roseburg District. Written comments on BLM projects, including the specific project and field office name, should be sent to 777 N.W. Garden Valley Blvd., Roseburg, Oregon 97471, during the specified public comment period.

Thank you for your interest in Roseburg District BLM lands.

Sincerely,

A handwritten signature in blue ink that reads "Abbie Jossie". The signature is written in a cursive style and extends across the width of the page.

Abbie Jossie  
District Manager

# Table of Contents

<b>Key Contact</b> .....	<b>1</b>
<b>Categorical Exclusions</b> .....	<b>1</b>
<i>Roseburg District</i> .....	1
<i>South River Field Office</i> .....	1
<i>Swiftwater Field Office</i> .....	1
<b>New Projects</b> .....	<b>1</b>
<i>Roseburg District</i> .....	1
<b>Timber Management Activities</b> .....	1
<b>Restoration Activities</b> .....	2
<b>Other Activities</b> .....	2
<i>South River Field Office</i> .....	<b>2</b>
<b>Timber Management Activities</b> .....	2
<b>Restoration Activities</b> .....	3
<b>Other Activities</b> .....	2
<i>Swiftwater Field Office</i> .....	<b>2</b>
<b>Timber Management Activities</b> .....	2
<b>Restoration Activities</b> .....	2
<b>Other Activities</b> .....	2
<b>Status of Previous Planning Update Action Items</b> .....	<b>3</b>
<i>Roseburg District</i> .....	<b>3</b>
<b>Timber Management Activities</b> .....	3
<b>Restoration Activities</b> .....	3
<b>Other Activities</b> .....	3
<i>South River Field Office</i> .....	3
<b>Timber Management Activities</b> .....	3
<b>Restoration Activities</b> .....	4
<b>Other Activities</b> .....	4
<i>Swiftwater Field Office</i> .....	5
<b>Timber Management Activities</b> .....	5
<b>Restoration Activities</b> .....	6
<b>Other Activities</b> .....	6
<b>North Bank Habitat Management Area (NBHMA) Activities</b> .....	6
<b>Volunteer Opportunities</b> .....	<b>7</b>
<b>South River Resource Area Map</b> .....	<b>8</b>
<b>Swiftwater Resource Area Map</b> .....	<b>9</b>
<b>Abbreviations and Definitions</b> .....	<b>10</b>

## Key Contact

For more information about projects in the Quarterly Planning Update, contact Cheyne Rossbach, Public Affairs Officer at (541) 464-3245.

## Categorical Exclusions

In implementation of the NEPA regulations, the BLM has developed categorical exclusions covering management actions for many resource programs, including fish and wildlife, forestry, realty, transportation, recreation management and emergency stabilization following a natural disaster. In developing categorical exclusions, the BLM demonstrated through rulemaking procedures how these actions do not typically result in significant environmental effects and set forth the methodology and criteria used to define the categories of actions. These rulemaking procedures included extensive public involvement and input, and CEQ review, regarding appropriate limits on the use of the categorical exclusion to assure that any categorically excluded action would remain within the effects of actions covered in the analysis for the rulemaking. The purpose of a categorical exclusion is to eliminate the need for unnecessary paperwork under NEPA. Specifically, Council of Environmental Quality (CEQ) regulations for the National Environmental Policy Act (NEPA) at 40 CFR §1508.4 state that:

*“‘Categorical exclusion’ means a category of actions which do not individually or cumulatively have a significant effect on the human environment and which have been found to have no such effect in procedures adopted by a Federal agency in implementation of these regulations (Sec. 1507.3) and for which, therefore, neither an environmental assessment nor an environmental impact statement is required...Any procedures under this section shall provide for extraordinary circumstances in which a normally excluded action may have a significant environmental effect.”*

Use of categorical exclusions on the Roseburg District includes an internal exemption review of extraordinary circumstances as prescribed through CEQ and Departmental/Bureau policy. We include categorical exclusions in the Roseburg District Quarterly Planning Update to keep the public informed, but because the actions are categorically excluded from NEPA review, there is not a comment/response process as with NEPA documents such as environmental assessments (EAs) and environmental impact statements (EISs).

### *Roseburg District*

- There are no new categorical exclusions at the District level this quarter.

### *South River Field Office*

- There are no new categorical exclusions for the South River Field Office this quarter.

### *Swiftwater Field Office*

- There are no new categorical exclusions for the Swiftwater Field Office this quarter.

## New Projects

### *Roseburg District*

### Timber Management Activities

There are no new planning starts underway for timber management activities at the District level.

## **Restoration Activities**

There are no new planning starts underway for restoration activities at the District level.

## **Other Activities**

There are no new planning starts underway for other, miscellaneous activities at the District level.

## *South River Field Office*

### **Timber Management Activities**

There are no new planning starts for timber management activities in the South River Field Office.

### **Restoration Activities**

There are no new planning starts for restoration activities in the South River Field Office.

### **Other Activities**

#### **Rabbit Mountain Fire Late-Successional Reserves Recovery**

The Rabbit Mountain Fire affected approximately 23,984 acres of BLM-administered and privately managed lands, including approximately 6,267 acres in the Late-Successional Reserve (LSR) land use allocation on the South River Resource Area. The purpose of this project is to address resource concerns related to safety along roads, fuel loading, and habitat conditions resulting from the Rabbit Mountain Fire. Management actions would be consistent with Roseburg District Record of Decision and Resource Management Plan (ROD/RMP 1995) objectives for LSR.

**Location:** T. 31 S., R. 7 & 8 W.; and T. 32 S., R. 7 & 8 W., Willamette Meridian, exact boundaries yet to be determined.

**Scoping Period:** January 21 – February 22, 2014.

**Issue Identification:** Ongoing.

**Analysis:** Environmental Assessment.

**Public Comment Period:** Summer, 2014.

**Decision Date:** Fall, 2014.

## *Swiftwater Field Office*

### **Timber Management Activities**

#### **Back in Black Harvest Plan**

**Description:** Commercial thinning and variable retention harvest of 40-65 year old forest stands on 800 acres in the Calapooya Creek and Lower North Umpqua watersheds is planned within the General Forest Management Area land use allocation. Three sales are planned, anticipated to yield approximately 13.0 MMBF of timber.

**Location:** Sections 5 and 7 of T. 24 S., R. 3 W.; Sections 1 and 13 of T. 24 S., R. 4 W., W.M.; and Section 17 of T. 25 S., R. 4 W.

**Issue identification:** Ongoing.

**Analysis:** Environmental Assessment.

**Public Comment Period:** Unknown at this time.

**Decision Date:** Separate decisions for each sale are anticipated in fiscal year 2016.

### **Restoration Activities**

There are no new planning starts for restoration activities in the Swiftwater Field Office.

### **Other Activities**

There are no new planning starts for other miscellaneous activities in the Swiftwater Field Office.

# Status of Previous Planning Update Action Items

Note- the Roseburg District FY2014 Timber Sale Plan is available at: <http://www.blm.gov/or/districts/roseburg/timbersales/files/2014-sale-plan.pdf>

## *Roseburg District*

### **Timber Management Activities**

There are no previous planning actions to update for timber management activities at the District level.

### **Restoration Activities**

There are no previous planning actions to update for restoration activities at the District level.

### **Other Activities**

#### **Vegetation Management Activities Using Herbicides**

**Description:** The BLM Roseburg District is beginning work on an Environmental Assessment (EA) for *Vegetation Management Activities Using Herbicides*. The BLM is proposing to use herbicides as part of an integrated vegetation management strategy to control noxious and invasive species and achieve landscape health objectives.

**Location:** Throughout Roseburg District administered lands.

**Issue Identification:** Completed. Public scoping was conducted June 15, 2011 through July 15, 2011 and a public open house was held on June 27, 2011 at the Roseburg District BLM Office.

**Analysis:** Environmental Assessment.

**Public Comment Period:** Unknown at this time.

**Decision Date:** Unknown at this time.

## *South River Field Office*

### **Timber Management Activities**

#### **Myrtle Creek 2013 Harvest Plan**

**Description:** The proposed action would apply silvicultural treatments to an estimated 3,142 acres of BLM-administered lands within the Myrtle Creek fifth-field watershed, allocated as General Forest Management Area, Connectivity/Diversity Block, and Riparian Reserve. Proposed treatments would include thinning from below, variable density thinning in upland stands, density management in Riparian Reserves, and variable retention harvest. Design of the project and analysis of the effects of the proposed action will conform to the management objectives of the 1995 Roseburg District *Record of Decision and Resource Management Plan*.

**Location:**

- Sections 31 and 32 of T. 28 S., R. 2 W., Willamette Meridian (W.M.)
- Sections 17, 20, 21, 26, 28, 29, 31, 22, 33, 35 and 36 of T. 28 S., R. 3 W., W.M.
- Sections 2, 3, 9, 10, 17, 18, 19, 21, 25, 29 and 35 of T. 28 S., R. 4 W., W.M.
- Section 27 of T. 28 S., R. 5 W., W.M.
- Section 8, T. 29 S., R. 2 W., W.M.
- Sections 3, 5, 7, 9 and 15 of T. 29 S., R. 3 W., W.M.
- Sections 3, 11, 13, and 15 of T. 29 S., R. 4 W., W.M.

**Issue Identification:** Complete.

**Analysis:** Environmental Assessment.

**Public Comment Period:** Summer 2014.

**Decision Date:** Fiscal years 2015 and 2016.

## Camas Valley 2011 Harvest Plan

**Description:** The proposal consists of two sub-alternatives to the proposed action. The first would thin approximately 1,775 acres in the General Forest Management Area, Connectivity/Diversity Block, Riparian Reserve and Late-Successional Reserve land use allocations. The second would thin approximately 1,574 acres and apply a variable retention harvest prescription to approximately 239 acres of 60 to 70 year old stands in the General Forest Management Area with thinning in portions of associated Riparian Reserves.

Design of the project and analysis of the effects of the proposed action will conform to the management objectives of the 1995 Roseburg District *Record of Decision and Resource Management Plan* and will tier to the analytical assumptions and conclusions of the 1994 Roseburg District *Proposed Resource Management Plan/Environmental Impact Statement*.

### Location:

- Commercial thinning/Matrix and density management/Riparian Reserves: Sections 19, 29 and 31, T. 28 S., R. 8 W.; Sections 27 and 31, T. 29 S., R. 8 W.; Sections 13 and 35, T. 29 S., R. 9 W.; and Sections 3 and 27, T. 30 S., R. 9 W., W.M.
- Potential variable retention harvest/General Forest Management Area and density management/Riparian Reserves: Section 35, T. 29 S., R. 9 W., W.M.
- Density management/Late-Successional Reserves: Sections 5, 17 and 27, T. 28 S., R. 8 W.; Sections 5, 9 and 15, T. 29 S., R. 8 W.; Sections 3, 15, 23 and 27, T. 29 S., R. 9 W.; Sections 9, 17, 19, 27, and 33, T. 30 S., R. 8 W.; and Section 25, T. 30 S., R. 9 W., W.M.

**Issue Identification:** Complete.

**Analysis:** Environmental Assessment.

**Public Comment Period:** Complete – June 19 through July 19, 2013.

**Decision Date:** A decision on the Here's Your Sign timber sale was issued on November 19, 2013. Four other decisions are anticipated over the balance of fiscal year 2014 and in fiscal year 2015.

## Restoration Activities

There are no previous planning actions to update for restoration activities in the South River Field Office.

## Other Activities

### White Castle Temporary Area Closure

**Description:** Under regulations at 43 CFR 8364.1, the BLM Roseburg District South River Field Office has completed an environmental assessment to temporarily restrict motorized and non-motorized public access to the contract area of the White Castle Variable Retention Harvest project for a period of up to 24 months. Administrative use by the BLM and its contractors, U.S. Forest Service, Douglas Forest Protective Association, Oregon Department of Fish and Wildlife (ODFW), and access by parties with rights of reciprocal use would be permitted. Signs and temporary traffic barriers would be used to restrict access by the general public to the 2,167-acre Action Area including approximately 15 miles of road within the area. The purpose for this proposed action is to quickly implement a temporary closure of the area during active logging operations. The need results from the danger to timber sale protesters within harvest units of an active timber sale; risks to personnel engaged in timber harvest operations; and potential damage to roads, vehicles, and equipment. (DOI-BLM-OR-R050-2013-0007-EA)

**Location:** S½SE¼ Section 23, Section 25, and NE¼ Section 26, T. 28 S. R 3 W., Willamette Meridian (W.M.) and E½ Section 4, NE¼W½ Section 4, N½ Section 31, Section 32, and SW¼, and Section 33, T. 28 S. R 2 W., W.M.

**Issue Identification:** Completed

**Analysis:** Environmental Assessment

**Public Comment Period:** EA published July 31, 2013, Comment period: August 1 through August 30, 2013

**Decision Date:** November 21, 2013. Implementation date unknown at this time.



## **White Rock Travel Management Plan**

The Umpqua Lands Trail Riders Association proposed development of an OHV emphasis area in the Myrtle Creek watershed, near White Rock. The Roseburg District does not have the capacity to evaluate this proposal at this time, but prework will be opportunistically conducted in preparation for full evaluation of the proposal in the future.

**Description:** A comprehensive travel management plan that will include inventory and possible development of roads and trails for both motorized and non-motorized uses.

**Location:** T. 28 S., R. 3 W. and R. 4 W.; T. 29 S., R. 3 W. and R. 4 W., W.M. Exact boundaries to be determined.

**Scoping Period, Issue Identification, Analysis, Public Comment Period and Decision Date** are all unknown at this time.

## *Swiftwater Field Office*

### **Timber Management Activities**

#### **Calapooya Creek Harvest Plan**

**Description:** Commercial thinning, variable density thinning and variable retention harvest of 30-73 year old forest stands on 1,275 acres in the Calapooya Creek and Lower North Umpqua watersheds is planned within General Forest Management Area and Connectivity/Diversity Block land use allocations. Two sales are planned, Green Gas and Good Boyd, which are anticipated to yield approximately 7.0 MMBF of timber.

**Location:** Sections 7, 17, 19, 29, and 33 of T. 25 S., R. 3 W.; Sections 23 and 25 of T. 25 S., R. 4 W., W.M.; Sections 5, 7, 9, 17 of T. 24 S., R. 3 W.; and Sections 1, 9, 11, 13, 15 of T. 24 S., R. 4 W.

**Issue identification:** Ongoing.

**Analysis:** Environmental Assessment.

**Public Comment Period:** Unknown at this time.

**Decision Date:** Separate decisions for each sale are anticipated in fiscal years 2015 and 2016.

#### **Deadman's Folley Thinning**

This project has been postponed at this time.

#### **Half and Half Commercial Thinning**

**Description:** Density management of 36-57 year old forest stands on 1163 acres in the Upper Smith River watershed within General Forest Management Area, Connectivity/Diversity Block and Late Successional Reserve land use allocations. Two sales are planned: Halfway There (561 acres) and Halfway Decent (602 acres) which are anticipated to yield approximately 8.0 MMBF of timber.

**Location:** Sections 2, 3, 4, 5, 7, 8, 9, 15, 16 and 17 of T. 21 S., R. 7 W. and Section 33 of T. 20 S., R. 7 W., W.M.

**Issue identification:** Ongoing.

**Analysis:** Environmental Assessment.

**Public Comment Period:** Spring 2014.

**Decision Date:** Separate decisions for each sale are anticipated in fiscal year 2015.

#### **Thunderbolt Thinning**

**Description:** Thinning in the Adaptive Management Area (AMA), General Forest Management Area, Connectivity/Diversity Block, and Riparian Reserve land use allocations in the Little River and Middle North Umpqua River watersheds. It involves the silvicultural thinning of 49-73 year old forest stands. Three sales are planned: Big Thunder (650 acres), Thundering Herd (540 acres), and Rolling Thunder (395 acres).

**Location:** Sections 19, 20, 21, 23, 25, 26, 27, 29, 30, 31, and 33, T. 26 S., R. 2 W., W.M.

**Issue Identification:** Completed.

**Analysis:** Environmental Assessment.

**Public Comment Period:** November 12 through December 12, 2013.

**Decision Date:** Three separate decisions are anticipated in fiscal years 2014 and 2015.

## **Box of Rocks Commercial Thinning and Density Management**

This analysis was conducted by the South River Field Office, which will prepare and administer the project.

**Description:** Commercial thinning and density management of approximately 1,255 acres in the Matrix land use allocations and associated Riparian Reserves, and density management of approximately 395 acres allocated to Late-Successional Reserves. The project is anticipated to yield 12 to 15 million board feet of timber.

**Location:** Section 31 of T. 24 S., R. 1 W., Willamette Meridian (W.M.); Sections 5, 6, 7, 8, 15, 23, 25 and 26 of T. 25 S., R. 1 W., W.M.; and Sections 1, 7, 11, 15, 17, 23 and 25 of T. 25 S., R. 2 W., W.M.

**Issue Identification:** Completed.

**Analysis:** Environmental Assessment complete.

**Public Comment Period:** Completed February 22 through March 24, 2011.

**Decision Date:** The first decision, for Cancoon Commercial Thinning, was issued in June 2012 and the timber sale was sold at auction on July 24, 2012. The Stone Shoup decision was issued on February 26, 2013, and the sale offered at auction on June 25, 2013. A decision for It's All Relative Commercial Thinning was issued on August 13, 2013, with a scheduled auction date of September 10, 2013. Two additional decisions are forthcoming in fiscal year 2014.

## **Restoration Activities**

### **Future Culvert Replacements**

**Description:** Replacement of two major culverts located along the Rock Creek Road. The McComas Creek and Kelly Creek culverts will be replaced with open bottom concrete structures to allow fish passage to the upper reaches of these stream systems. Structure design and project development have been initiated however implementation is not expected to occur until after 2015 because funding for construction is not confirmed.

Bypass roads are included in the project to provide public use of the Rock Creek Road during construction.

**Location:** Section 36 of T. 25 S., R. 07 W.

**Analysis:** Analysis is expected to tie to the 2008 Roseburg District Aquatic Restoration EA (EA#OR-103-08-09) to inform a decision on the project proposal.

### **Other Activities**

There are no previous planning actions to update for other, miscellaneous activities in the Swiftwater Field Office.

## **North Bank Habitat Management Area (NBHMA) Activities**

**Description:** Cattle grazing is being used as a tool to manage vegetation on the east side of the NBHMA (Blacktail Basin). It resumed in December, 2013, when forage growth is sufficient to support grazing. It will continue until the summer of 2014, when vegetation becomes too dry to have forage value. As the rate of forage growth increases, the number of cattle will be increased to a maximum of approximately 60. The grazing helps improve forage conditions for Columbian white-tailed deer by reducing thatch and stimulating grass and forb growth. Temporary fencing is used to delineate pastures and manage grazing intensity. In addition to the fencing, permanent gates have been installed at locations where the fences cross roads. The gates will remain open until grazing resumes.

Ongoing projects include invasive species removal, a Columbian white-tailed deer GPS collar study in partnership with Oregon Department of Fish and Wildlife, maintenance of special status species plant populations, and stream and riparian restoration and road maintenance.

**Location:** Sections 31, 32, and 33, T. 25 S., R. 4 W., W.M.; Sections 35 and 36, T. 25 S., R. 5 W., W.M.; Sections 1, 2, 11, 12, 13, and 14, T. 26 S., R. 5 W., W.M. and Sections 4, 5, 6, 7, and 8, T. 26 S., R. 4 W., W.M.

**Issue Identification:** Completed.

**Analysis:** Completed – these activities are covered by the North Bank Habitat Management Area / ACEC Final EIS (September 2000)

**Public Comment Period:** Completed in September 2000.

**Decision Date:** September 2000.



## Volunteer Opportunities

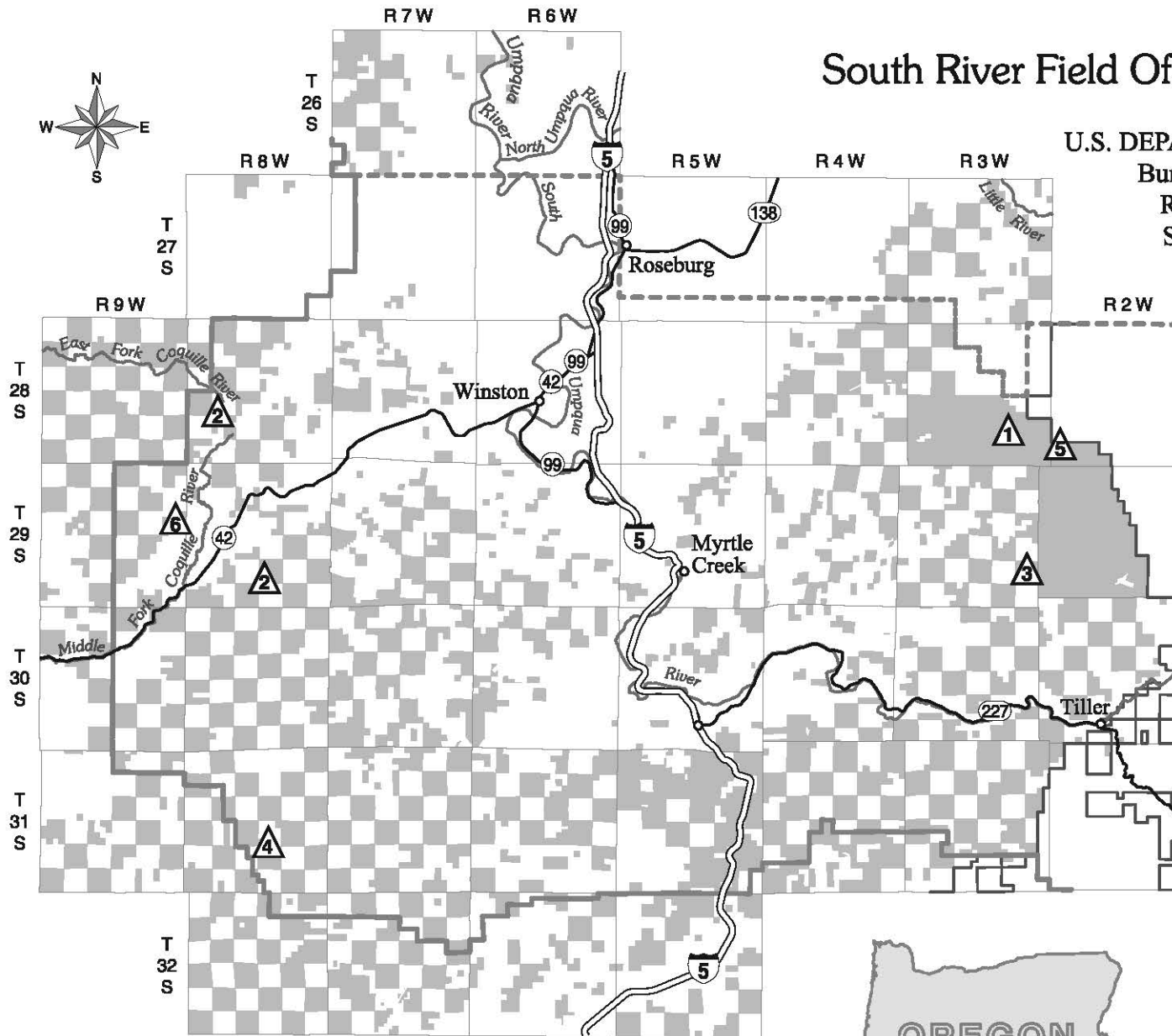
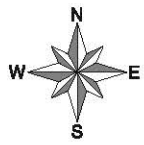
- **Eagle Scout projects:** past projects have included recreation site improvements like fence work, trail work, building and installing benches and railings, and sign installation.
- **Job shadows** are available for motivated high school and college students interested in natural resource management careers. Contact Cheyne Rossbach at 541.464.3245 or [crossbac@blm.gov](mailto:crossbac@blm.gov)
- **Campground Hosts:** positions are open for the 2014 camping season. Full hookup site provided; restroom cleaning and campground upkeep included in job duties.
- **Self-directed volunteer projects** are available as well, depending on interests, experience level, and available staff time.



Contact [ahiller@blm.gov](mailto:ahiller@blm.gov) or call 541.464.3356 regarding any volunteer opportunities on the Roseburg district. Thank you!

# South River Field Office Planning Update

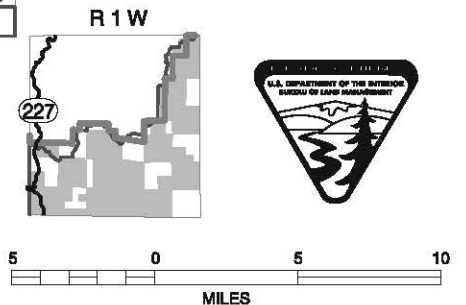
U.S. DEPARTMENT OF THE INTERIOR  
 Bureau of Land Management  
 ROSEBURG DISTRICT  
 South River Field Office  
 Spring 2014



## LEGEND

- Interstate Highway
- State Highway
- BLM District Boundary
- BLM Resource Area Boundary
- National Forest Boundary
- BLM Administered Land

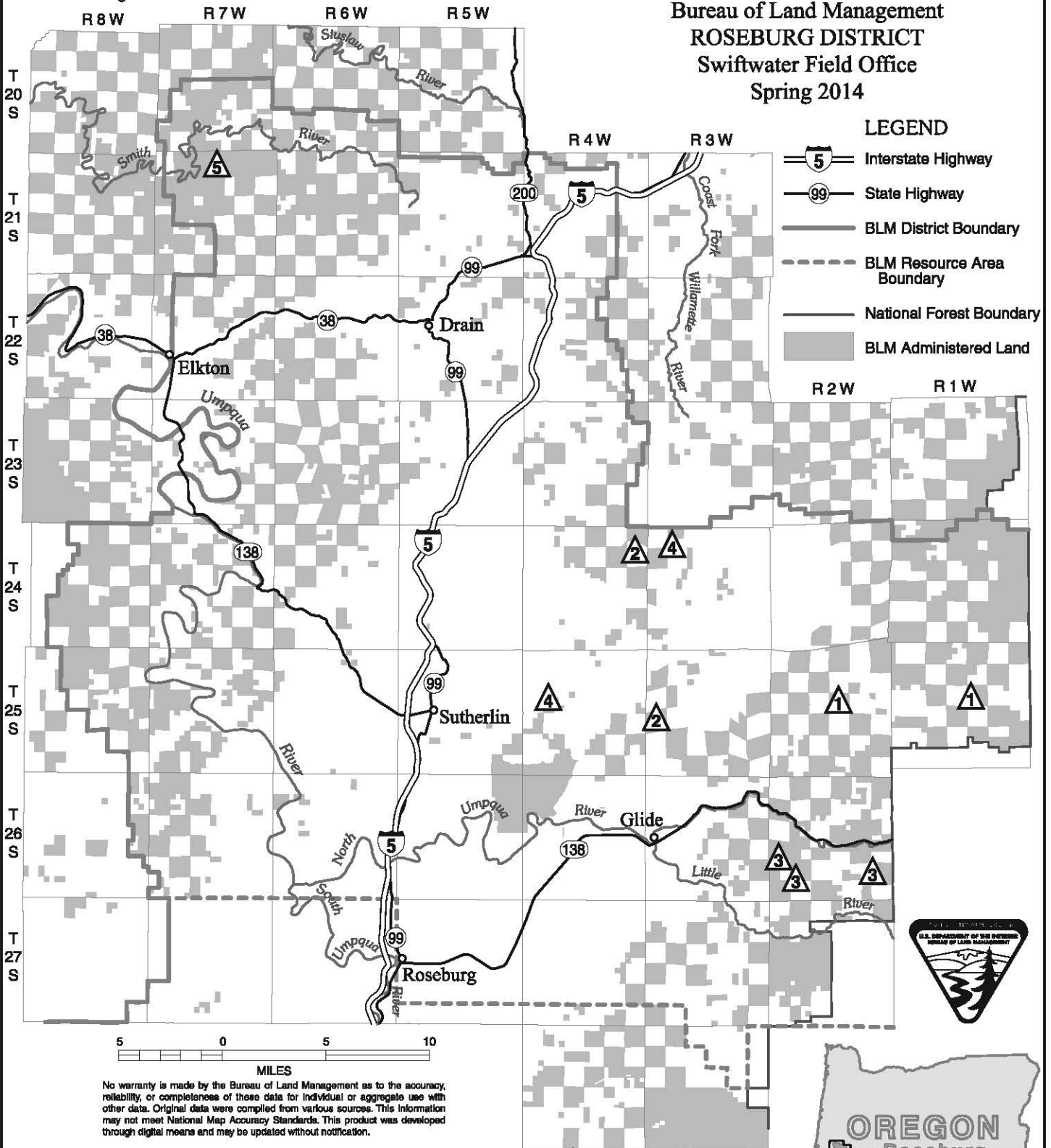
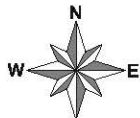
- White Rock Travel Management Plan
- Camas Valley 2011 Harvest Plan
- Myrtle Creek Harvest Plan
- Rabbit Mtn Fire Late-Successional Reserves Recovery
- White Castle Temporary Closure
- Fallen Feline Salvage



No warranty is made by the Bureau of Land Management as to the accuracy, reliability, or completeness of these data for individual or aggregate use with other data. Original data were compiled from various sources. This information may not meet National Map Accuracy Standards. This product was developed through digital means and may be updated without notification. M12-02-01

# Swiftwater Field Office Planning Update

U.S. DEPARTMENT OF THE INTERIOR  
 Bureau of Land Management  
 ROSEBURG DISTRICT  
 Swiftwater Field Office  
 Spring 2014



## Abbreviations and Definitions

**ACEC/RNA** – Area of Critical Environmental Concern/Research Natural Area

**BO** - Biological Opinion.

**CX or Categorical Exclusion** - Actions which do not have significant effects on the environment and for which an Environmental Analysis (EA) or an Environmental Impact Statement (EIS) is not required.

**EA - Environmental Assessment** – This is a concise public document that briefly provides evidence and analysis of a proposed Federal action. It is used to determine whether further analysis needs to be done for an Environmental Impact Statement (EIS) or a Finding of No Significant Impact (FONSI).

**ERFO** – Emergency Relief for Federally Owned Roads

**FONSI - Finding of No Significant Impact** - This is a document that briefly presents the reasons why the implementation of an action will not result in “significant” environmental impacts (effects) beyond those already addressed in the Roseburg District’s *Proposed Resource Management Plan / Environmental Impact Statement* (PRMP/EIS, October 1994).

**IDT** - Interdisciplinary Team - A team is a group of resource specialists, whose participation is determined by the issues relating to the project proposal, and who conduct environmental analysis.

**Matrix Lands** – Comprised of Connectivity/Diversity Blocks and General Forest Management Area land use allocations. Most timber harvest contributing to the Allowable Sale Quantity takes place in this area. Approximately 19% of the Roseburg District BLM is matrix. (Land use allocation under the NWFP & 1995 ROD/RMP).

**MBF** - Thousand board feet.

**MMBF** - Million board feet.

**NEPA** - National Environmental Policy Act - A federal law which sets the systematic interdisciplinary analysis to achieve integrated consideration of physical, biological, economic, and other sciences to provide for an informed decision. The process provides for public participation in the development, review and revision of certain activities on Federal Lands.

**NWFP** - Northwest Forest Plan - A common name for the Record of Decision for Amendments to Forest Service and Bureau of Land Management Planning Documents Within the Range of the Northern Spotted Owl (April 1994). It is also used to refer to the Standards and Guidelines for Management of Habitat for Late-Successional and Old Growth Forest Related Species with the Range of the Northern Spotted Owl which accompanies the Record of Decision.

**O&C Lands** - Revested Oregon and California Railroad Lands.

**Record of Decision and Resource Management Plan (ROD/RMP)** - A land use plan prepared by the BLM in accordance with the Federal Land Policy and Management Act (FLPMA).

**Scoping** - An early and open part of environmental analysis that allows interested public and other Federal, state and local agencies the opportunity to provide issues, concerns and opportunities relative to proposed project actions. Scoping is required by regulation for Environmental Impact Statements.