

Roseburg District BLM Planning Update



Winter 2009

December 8, 2009

Dear Citizen:

The Planning Update is published to provide current information about specific projects and future events planned on the Roseburg District of the Bureau of Land Management. As mentioned in the Fall 2009 Update, all projects in the planning or decision stages conform to the 1995 Resource Management Plan.

Please send written comments on these projects, including the specific project and field office name, to 777 N.W. Garden Valley Blvd., Roseburg, Oregon 97471, during the public comment period.

Thank you for your interest in Roseburg District BLM lands!

Sincerely,

A handwritten signature in black ink, appearing to read "Jay K. Carlson".

for Jay K. Carlson
District Manager

Table of Contents

Key Contact	1
Non-Discretionary Actions Under Reciprocal Right-of-Way Agreements	1
<i>South River Field Office</i>	1
<i>Swiftwater Field Office</i>	1
Categorical Exclusions	1
<i>Roseburg District</i>	2
South River Field Office.....	2
New Projects	2
Roseburg District.....	3
South River Field Office.....	3
Swiftwater Field Office.....	3
Status of Previous Planning Update Action Items	4
<i>Roseburg District</i>	4
Timber Management Activities	4
Restoration Activities	4
Other Activities	4
South River Field Office.....	4
Timber Management Activities	4
Restoration Activities	6
Other Activities	6
Swiftwater Field Office.....	6
Timber Management Activities	6
Restoration Activities	8
Other Activities	8
North Bank Habitat Management Area (NBHMA) Activities	8
Volunteer Opportunities	9
South River Resource Area Map	10
Swiftwater Resource Area Map	11
Abbreviations and Definitions	12

Key Contact

For more information about projects in the Quarterly Planning Update, contact Bob Hall, Public Affairs Officer at (541) 464-3245.

Non-Discretionary Actions Under Reciprocal Right-of-Way Agreements

A reciprocal right-of-way agreement is a document exchanging access rights between BLM and a permittee pursuant to 43 CFR 2812 regulations. BLM has 140 individual agreements and easements that were executed prior to the implementation of the Roseburg District Record of Decision and Resource Management Plan (ROD/RMP p. 71). These 140 agreements are subject to regulations in effect at the time the agreements were executed or assigned. The BLM's discretion on activities pursuant to these agreements (such as road construction) is limited to that described in the agreement itself.

South River Field Office

- **Roseburg Resources Company, Reciprocal Right-of-Way Agreement R-851** – Improvements to 321 feet of Road No. 29-6-31.3, Segment A, located on BLM-administered land in the SE $\frac{1}{4}$ SE $\frac{1}{4}$, Section 31, T. 29 S., R. 6 W. The road will be widened to facilitate set-up of rock-crushing equipment and stockpiling of rock from Roseburg Resources Company's Mt. Baldy quarry. The lands are allocated as Connectivity/Diversity Block, and the forest stands involved are mid-seral in nature.

Swiftwater Field Office

- **Juniper Properties, Reciprocal Right-of-Way Agreement R-763P** – Construction of 898 feet of road on BLM land in the NE $\frac{1}{4}$ NE $\frac{1}{4}$ of Section 35, T. 22 S., R. 5 W., W.M. The BLM lands involved are late-seral stands in the General Forest Management Area land use allocation.

Categorical Exclusions

Certain activities within the BLM have been categorically excluded from preparation of an Environmental Assessment (EA) or Environmental Impact Statement (EIS). The purpose of a categorical exclusion is to eliminate the need for unnecessary paperwork under NEPA. Specifically, Council of Environmental Quality (CEQ) regulations for the National Environmental Policy Act (NEPA) at 40 CFR §1508.4 state that:

"Categorical exclusion' means a category of actions which do not individually or cumulatively have a significant effect on the human environment and which have been found to have no such effect in procedures adopted by a Federal agency in implementation of these regulations (Sec. 1507.3) and for which, therefore, neither an environmental assessment nor an environmental impact statement is required...Any procedures under this section shall provide for extraordinary circumstances in which a normally excluded action may have a significant environmental effect."

In implementation of the NEPA regulations, the BLM has developed categorical exclusions for certain silvicultural activities, such as reforestation, pre-commercial treatments, brush control, sample tree falling, salvage, commercial thinning, and hazardous fuels reduction of limited acres. In developing categorical exclusions, the BLM demonstrated through rulemaking procedures how these actions do not typically result in significant environmental effects and set forth the methodology and criteria used to define the categories of actions. These rulemaking procedures included extensive public involvement and input, and CEQ review, regarding appropriate limits on the use of the categorical exclusion to assure that any categorically excluded action would remain within the effects of actions covered in the analysis for the rulemaking.

As such, in deciding whether to proceed with such actions, the BLM will review their particular conditions to ensure that no extraordinary circumstances exist, as listed in the Department of the Interior's NEPA Manual at 516 DM 2, Appendix 2 that would preclude the use of a categorical exclusion. The Roseburg District maintains an on-site NEPA register that lists ongoing actions, and seeks information from the public as to whether extraordinary circumstances exist for any of these ongoing actions that are categorically excluded. An "extraordinary"

circumstance is one that could have significant environmental effects beyond the “ordinary” circumstances already described and considered as applicable to the excluded actions in the rulemaking procedure. These categorically excluded actions, by regulation, do not require the documentation necessary for an EA or EIS. The public was also provided a formal opportunity to participate in the agency’s review and approval of these categorically excluded activities.

Roseburg District

- There are no new categorical exclusions at the District level this quarter.

South River Field Office

- **Amendments to Seneca Jones Reciprocal Right-of-Way Agreement** – Amendments to Rights-of-Way and Road Use Agreements R-656, R-642 and R-791, and O&C Logging Road Rights –of-Way Agreements R-656, R-642 and R-791. The amendments authorize use of additional selected roads, administered by the BLM, for the purpose of hauling timber from private lands. (DOI-BLM-OR-R050-2009-0017-CX).
- **Pre-commercial Thinning** – Pre-commercial thinning of approximately 356 acres allocated as General Forest Management Area and 91 acres allocated as Connectivity/Diversity Block at various locations throughout the resource area. (DOI-BLM-OR-R050-2009-0018-CX).
- **Pruning** – Pruning of approximately 500 acres in various land use allocations throughout the resource area. Dominant trees in stands that were previously pre-commercially thinned will be pruned to a height of 10 to 18 feet. (DOI-BLM-OR-R050-2009-0019-CX).
- **Timber Salvage** – Salvage of blown down timber within 200 feet of surfaced roads in the General Forest Management Area commonly used by the public, and those portions of trees blocking roads within Riparian Reserves. Salvage includes mid-seral and mature timber. (DOI-BLM-OR-R050-2009-0020-CX).

Swiftwater Field Office

- **Salvage of Windthrown Timber.** – Salvage of approximately 142 trees blown down in close proximity to the Lookout Mountain road (24-8-35.1 road) in Section 01, T. 27 S., R. 02 W., W.M. Trees vary in diameter from 8 inch to 44 inch DBH and a total volume of 125 MBF. The salvage is located in Late-Successional Reserve land use allocation. (DOI-BLM-OR-R040-2009-014-CX).
- **Agony Ridge Blasting for Road Improvement.** – Authorization to use explosives on BLM lands for the purpose of widening two unsafe corners on the 24-8-35.1 road in Section 20, T. 24 S., R. 8 W., W.M. Trees removed range in diameter from 10 inch to 24 inch DBH; however, these trees are not suitable habitat for marbled murrelet or northern spotted owl. The road improvement is located in Late-Successional Reserve land use allocation. (CX# OR-104-08-032).
- **Pre-commercial Thinning.** – Pre-commercial thinning on stands approximately twelve to twenty-three years old at various locations throughout the Swiftwater Resource Area. Thinning of 991 acres at 13 X 13 foot spacing in the General Forest Management Area, Adaptive Management Area, Connectivity/Diversity Block, and Riparian Reserve Land Use Allocations. Thinning of 547 acres at 16 X 16 foot spacing and hardwood clumps at 50 X 50 foot spacing in the Late-Successional Reserve Land Use Allocation. (DOI-BLM-OR-R040-2009-0013-CX).
- **Williams Creek Fire Emergency Stabilization & Burned Area Rehabilitation.** – Authorization of native grass seeding of 20 acres in fire suppression disturbance areas (i.e. roadsides, dozer lines, etc.) and noxious weed treatment of 127 acres disturbed by the fire and approximately one mile of dozer constructed fire line. The actions occur in Sections 26, 27, 29, and 35, T. 25 S., R. 1 W., W.M. in the General Forest Management Area and Connectivity/Diversity Block land use allocations. (DOI-BLM-OR-R040-2009-0020-CX).

New Projects

Roseburg District

There are no new projects at the District level this quarter.

South River Field Office

Christian Futures Unilateral Right-of-Way and Road Construction Permit

Description: Christian Futures, Inc. has purchased two parcels of forest land from the State of Oregon, in the general vicinity of Canyon Pass. They are seeking permission to construct new roads across BLM lands, construct a landing just off of a property line, and use existing BLM roads to transport timber harvested from the purchased lands.

Location: Sections 26 and 35, T. 31 S., R. 5 W., W.M.

Issue Identification: Ongoing.

Analysis: Environmental Assessment.

Public Comment Period: Anticipated in February of 2010.

Decision Date: Anticipated in April of 2010.

Douglas County Unilateral Right-of-Way and Road Construction Authorization

Description: The Douglas County Lands Department is seeking permission to use an existing BLM-administered road, make improvements to a jeep road on BLM-administered lands in Section 1, T. 30 S., R. 5 W., and construct new road across BLM-administered lands in Section 35, T. 29 S., R. 5 W., W.M. This would provide access for the purpose of harvesting County-owned timber land in Section 35, T. 29 S., R. 5 W., W.M

Location: Section 35, T. 29 S., R. 5 W. and Section 1, T. 30 S., R. 5 W., W.M. .

Issue Identification: Ongoing.

Analysis: Environmental Assessment.

Public Comment Period: Anticipated in February of 2010.

Decision Date: Anticipated in April of 2010.

Swiftwater Field Office

Basin Arizona Density Management

Description: Density Management in Late-Successional Reserve land use allocation in the Upper Umpqua watershed. It involves the density management of approximately 299 acres of mid-seral forest stands (40-49 years old). This is a density management sale based upon the Upper Umpqua Watershed Plan analyzed and released on June 17, 2003 and the decision signed October 10, 2003.

Location: Sections 7 and 18 of T. 24 S., R. 7 W., W. M.

Issue Identification: Completed.

Analysis: Upper Umpqua Watershed Plan Completed (June 17, 2003).

Public Comment Period: Completed.

Decision Date: December 2009.

Little River MMX Commercial Thinning

Description: Commercial thinning in the Adaptive Management Area (AMA), General Forest Management Area, and Riparian Reserve land use allocations in the Little River and Lower and Middle North Umpqua River watersheds. It involves the commercial thinning or density management of approximately 1,790 acres of mid-seral forest stands (37-69 years old). Five sales are planned: Root Canal, Baker Street, Horseshoe, Emile Islands, and Jungle Jim.

Location: Sections 21, 23, 25, 26, 27, and 35 of T. 26 S., R. 3 W.; Sections 1, 3, 5, 7, 17, 18, 20, 21, 28, 29, 30, and 32, T. 27 S., R. 2 W., Section 1, 3, 9, 11, 21, 23, and 25, T. 27 S., R. 3 W., W. M.

Issue Identification: Beginning December 2009.

Analysis: Environmental Assessment.

Public Comment Period: August/September 2010.

Decision Date: Anticipated: Root Canal (2011), Baker Street (2011), Horseshoe (2011), Emile Islands (2012), and Jungle Jim (2013).

Status of Previous Planning Update Action Items

Roseburg District

Timber Management Activities

There is no planning underway this quarter for timber management activities at the District level.

Restoration Activities

Roseburg District Aquatic & Riparian Restoration

Description: Programmatic analysis of a variety of aquatic and riparian restoration work, including but not limited to, instream placement of logs and boulders, fish passage improvements, and road and culvert improvements, replacement, or rehabilitation.

Location: District-wide.

Issue Identification: Complete.

Analysis: Environmental Assessment.

Public Comment Period: Completed.

Decision Date: Multiple decisions anticipated beginning January/February 2010.

Other Activities

There is no planning underway this quarter for other, miscellaneous activities at the District level.

South River Field Office

Timber Management Activities

Note- the Roseburg District FY2010 Timber Sale Plan is available at:

<http://www.blm.gov/or/districts/roseburg/timbersales/files/2010SalePlan.pdf>

Alternative Access to Unit 5 of Treetop Flyer Commercial Thinning

Description: The proposed action is the construction of alternative access to Unit 30-3-15A described in the South Umpqua River Watershed Harvest Plan Environmental Assessment. The road would be a permanent, all-weather road located primarily in a ridge-top location along an existing jeep road. Portions of the unit were initially planned for helicopter yarding which is no longer economically viable. The road would allow for traditional cable yarding of approximately 35 acres that would not be otherwise accessible. The road would also extend the available seasons of operation, provide for safer yarding with less damage to the residual stand, and provide better access for future management entries.

The analysis will tier to and incorporate by reference the description of the affected environment and analysis of environmental consequences provided by the South Umpqua River Watershed Harvest Plan Environmental Assessment.

Location: Section 15, T. 30 S., R. 3 W., W.M.

Issue Identification: Completed.

Analysis: Environmental Assessment completed.

Public Comment Period: Mid-December 2009 to Mid-January 2010.

Decision Date: Anticipated in February 2010.

South River FY2009 Commercial Thinning

Description: Commercial thinning of approximately 432 acres of mid-seral forest stands in the Timber Management Area (TMA) and associated Riparian Management Area (RMA), and 803 acres in the Late-Successional Management Area (LSMA). Design of the proposed thinning projects, and analysis of the effects of the proposed action will conform to the management objectives of the 2008 Roseburg District *Record of Decision and Resource Management Plan* and will tier to the analytical assumptions and conclusions of the 2008 *Final Environmental Impact Statement for the Revision of the Resource Management Plans of the Western Oregon Bureau of Land Management*.

Location: TMA and RMA - Sections 8, 21, and 33 in T. 28 S., R. 8 W.; Sections 19, 25, 27, 29, 31, and 33 in T. 29 S., R. 6 W.; Sections 5, 7, and 9 in T. 30 S., R. 6 W., W.M. LSMA - Section 21 in T. 28 S., R. 8 W.; Sections 11, 13, 15, 25, and 31 in T. 29 S., R. 7 W.; Sections 27 and 33 in T. 29 S., R. 8 W.; Section 9 in T. 30 S., R. 7 W.; Sections 3 and 15 in T. 30 S., R. 8 W., W.M.

Issue Identification: Complete.

Analysis: Environmental Assessment.

Public Comment Period: Anticipated in February 2009.

Decision Date: Multiple decisions anticipated beginning in the fourth quarter of fiscal year 2010.

Middle South Umpqua/Dumont Creek Commercial Thinning and Density Management

Description: Commercial thinning and density management of approximately 290 acres of mid-seral forest stands allocated as General Forest Management Area, Connectivity/Diversity Block or Riparian Reserves.

Location: Proposed units are located in Sections 21, and 32, T. 29 S., R. 2 W.; and Sections 3, 9, 11 and 15, T. 30 S., R. 2 W., W.M.

Issue Identification: Complete.

Analysis: Environmental Assessment.

Public Comment Period: Completed.

Decision Date: A decision is anticipated in February 2010.

South Umpqua River Watershed Harvest Plan

Description: Proposed regeneration harvest of an estimated 236 acres, commercial thinning of an estimated 897 acres of forest lands in the Matrix land use allocations, including density management in associated Riparian Reserves; and density management of an estimated 574 acres in Late-Successional Reserve (LSR).

Location: The stands proposed for treatment are located in the Days Creek, Coffee Creek, St. Johns Creek, Shively O'Shea Creek, and Stouts Creek 6th-field subwatersheds of the South Umpqua 5th-field watershed. Individual units are located as follows:

Regeneration Harvest - Section 25, T. 29 S., R. 3 W.; Sections 3 and 4, T. 30 S., R. 4 W., W.M.

Commercial Thinning and Density Management in Matrix - Sections 8, 17, 18 and 19, T. 29 S., R. 2 W.; Sections 13, 25, 27, 33 and 35, T. 29 S., R. 3 W.; Section 9, T. 30 S., R. 2 W.; and Sections 3, 7, 15, 21 and 23, T. 30 S., R. 3 W., W.M.

LSR Density Management - Sections 29, 30 and 31, T. 30 S., R. 4 W.; Section 25, T. 31 S., R. 3 W., Sections 9, 13, 21, 23, and 30, T. 31 S., R. 4 W.; and Section 25, T. 31 S., R. 5 W., W.M.

Issue Identification: Complete.

Discretionary Scoping: Complete.

Analysis: Environmental Assessment.

Public Comment Period: Completed.

Decision Date: Decisions for Shively Whiplash Density Management and Thin Air Commercial Thinning were issued in August of 2009. One additional commercial thinning project and one regeneration harvest sale are planned for the second quarter of fiscal year 2010, completing implementation of the proposed action alternative.

South Myrtle Creek Regeneration Harvest Plan

Description: Regeneration harvest of approximately 575 acres of mature and late-successional forest comprised of the previously sold but unawarded Buck Fever, Class of 98, Dream Weaver and Sweet Pea timber sales.

Location: Sections 29, 31, 32, 33, 34 and 36, T. 28 S., R. 3 W.; Sections 1, 3, 9 and 11, T. 29 S., R. 3 W.; Sections 15, 17 and 19, T. 29 S., R. 4 W.; and Section 25, T. 29 S., R. 5 W., W.M.

Issue Identification: Completed.

Analysis: Environmental Assessment in progress.

Public Comment Period: Anticipated in February 2009.

Decision Date: A decision or decisions are anticipated in the third quarter of fiscal year 2010.

Restoration Activities

There is no planning underway this quarter for restoration activities within the South River Field Office.

Other Activities

White Rock Travel Management Plan

Description: A comprehensive travel management plan that will include inventory and possible development of roads and trails for both motorized and non-motorized uses. As a part of this planning effort, the BLM will be looking at a proposal that was brought forward by members of the public to develop an Off-Highway Vehicle area near White Rock.

Location: T. 28 S., R. 4 W., W.M.; T. 29 S., R. 4 W., W.M.; T. 28 S., R. 3 W., W.M.; and T. 29 S., R. 3 W., W.M. The exact boundary of the planning area is yet to be determined.

Scoping Period: Unknown at this time.

Issue Identification: Unknown at this time.

Analysis: Environmental Assessment.

Public Comment Period: Unknown at this time.

Decision Date: Unknown at this time.

Swiftwater Field Office

Timber Management Activities

Note- the Roseburg District FY2010 Timber Sale Plan is available at:

<http://www.blm.gov/or/districts/roseburg/timbersales/files/2010SalePlan.pdf>

Slim Sherlock Commercial Thinning

Description: Commercial thinning and density management in the Adaptive Management Area, General Forest Management Area, Connectivity/Diversity Block, and Riparian Reserve land use allocations in the Little River and Deer Creek-South Umpqua River watersheds. It involves the commercial thinning or density management of approximately 500 acres of mid-seral forest stands (45-51 years old). Two sales are planned: Slim Big Jim (148 acres) and Sherlock Home (352 acres).

Location: Sections 9, 19, and 31, T. 27 S., R. 03 W. and Section 25, T. 27 S., R. 04 W., W.M.

Issue Identification: Completed.

Analysis: Environmental Assessment.

Public Comment Period: Completed.

Decision Date: Separate decisions for each sale (2 total): Slim Big Jim (issued October 20, 2009) and Sherlock Home (anticipated March 2010).

Clever Beaver Density Management

Description: Density management in the Late-Successional Reserve land use allocation. It involves a single density management sale of approximately 315 acres of mid-seral forest stands (47-58 years old) in the Upper Smith River Watershed.

Location: Sections 25, 27, 33, and 35, T. 20 S., R. 06 W., W.M.

Issue Identification: Ongoing.

Analysis: Environmental Assessment.

Public Comment Period: Anticipated January 2010.

Decision Date: Anticipated September 2010.

Blackbird Commercial Thinning

Description: Commercial thinning in the General Forest Management Area, Connectivity/Diversity Block, and Riparian Reserve land use allocations in the Rock Creek, Lower North Umpqua, and Calapooya Creek watersheds. It involves the commercial thinning or density management of approximately 953 acres of mid-seral forest stands (38-50 years old). Three sales are planned: Corvid (291 acres), Craven Raven (341 acres), and Old Crow (321 acres).

Location: Sections 13, 23, 25, 27, 33, 34, and 35, T. 25 S., R. 03 W. and Section 3, T. 26 S., R. 03 W., W.M.

Issue Identification: Completed.

Analysis: Environmental Assessment.

Public Comment Period: November 24, 2009 through December 24, 2009.

Decision Date: Separate decisions for each sale (3 total): Corvid (March 2010), Craven Raven (May 2010), and Old Crow (June 2010).

Third Elk Commercial Thinning

Description: Commercial thinning in the General Forest Management Area, Connectivity/Diversity Block, and Riparian Reserve land use allocations in the Elk Creek/Umpqua River, Upper Coast Fork Willamette River, and Calapooya Creek watersheds. It involves the commercial thinning of approximately 685 acres of mid-seral forest stands (34-57 years old). Three sales are planned: Milk Shake (48 acres), Off Your Walker (428 acres), and Elk Camino (209 acres).

Location: Sections 11, 13, 17, and 33, T. 23 S., R. 04 W. and Section 5, T. 24 S., R. 04 W., W.M.

Issue Identification: Ongoing.

Analysis: Environmental Assessment.

Public Comment Period: Anticipated February 2010.

Decision Date: Separate decisions for each sale (3 total): Milk Shake (July 2010), Elk Camino (October 2010), and Off Your Walker (May 2011).

Mud Den Commercial Thinning

Description: Commercial thinning and density management in the General Forest Management Area, Connectivity/Diversity Block and Riparian Reserve land use allocations in the Upper Umpqua, Lower South Umpqua, and South Fork Coos River watersheds. It involves the commercial thinning or density management of approximately 830 acres of mid-seral forest stands. Three sales are planned: Calahan Mudaxle (200 acres), Devil's Den (240 acres), and Mud Slinger (390 acres).

Location: Sections 17, 21, 29, 31, 32, and 33, T. 26 S., R. 07 W., W.M.

Issue Identification: Ongoing.

Analysis: Environmental Assessment.

Public Comment Period: Anticipated March 2010.

Decision Date: Separate decisions for each sale (3 total): Calahan Mudaxle (August 2010), Devil's Den (December 2010), and Mud Slinger (August 2011).

Little Wolf Thrice Density Management

Description: An experimental thinning in the Late-Successional Reserve land use allocation. It involves the density management of approximately 20 acres of mid-seral forest (70-80 years old).

Location: Sections 3 & 10, T. 25 S., R. 8 W., W.M.

Issue Identification: Completed.

Analysis: Environmental Assessment.

Public Comment Period: Completed.

Decision Date: February 2010.

Northeast Elk Creek Density Management

Description: Density management of approximately 1,189 acres of mid-seral forest stands (38-77 years old). The proposed action would occur in the Elk Creek/Umpqua River Fifth-field Watershed within the Connectivity/Diversity Block and the Riparian Reserve land use allocations.

Location: Sections 27 and 35, T. 21 S., R. 4 W., Sections 9, 15, 20, 21, 23, and 27, T. 22 S., R. 4 W., and Section 3, T. 23 S., R. 4 W., W.M.

Issue Identification: Completed.

Analysis: Environmental Assessment.

Public Comment Period: Completed.

Decision Date: Five separate decisions, one for each sale: Bear Bones (issued August 4, 2009), General Lee (issued August 4, 2009), Cox Pit (issued August 18, 2009), Bucko (issued August 18, 2009), and Mr. Bennet (issued October 20, 2009 38-48.341). No further decisions based on the Northeast Elk Creek Density Management environmental assessment are planned.

Restoration Activities

There is no planning underway this quarter for restoration activities within the Swiftwater Field Office.

Other Activities

Tioga Bridge and Susan Creek Day-Use Area Improvements

Description: Recreation enhancement project to include: 1) expansion of the Susan Creek Day-Use Area parking lot, 2) construction of a pedestrian bridge that will utilize existing abutments and connect to the Tioga segment of the N. Umpqua trail, and 3) construction of a foot trail to connect the pedestrian bridge to the expanded parking lot. The project is located in the National Landscape Conservation System land use allocation.

Location: Sections 14, 22 and 23, T. 26 S., R. 2 W., W.M.

Issue Identification: Completed.

Analysis: Environmental Assessment.

Public Comment Period: Completed.

Decision Date: To be determined.

Susan Creek Stew WUI (Wildland Urban Interface)

Description: The proposed action involves the reduction of fuels, in the GFMA and the Riparian Reserve land use allocations, along the Susan Creek road system (26-2-23.0 and 26-2-14.0) and the removal of hazard trees in the Wildland Urban Interface.

Location: Sections 13 and 14, T. 26 S., R. 2 W., W.M.

Issue Identification: Completed.

Analysis: Environmental Assessment.

Public Comment Period: Completed.

Decision Date: Anticipated in December 2009.

Little Wolf Quarry Expansion Project

Description: The proposed action would expand the existing Little Wolf Quarry by approximately three acres, in the Late-Successional Reserve land use allocation. The project would include the development of a quarry restoration plan.

Location: Section 1, T. 25 S., R. 8 W., W.M.

Issue Identification: Completed.

Analysis: Environmental Assessment.

Public Comment Period: Completed.

Decision Date: Anticipated in December 2009.

North Bank Habitat Management Area (NBHMA) Activities

Description: Most of the work at North Bank Habitat Management Area (NBHMA) in the winter consists of ongoing monitoring efforts. The bulk of our project implementation happens in the dry months. During winter 2009-2010 we will be working on the following: ongoing hydrologic monitoring, several native shrub planting projects to provide browse for the Columbian white-tailed deer (CWTD), Coho salmon spawning surveys, ongoing CWTD GPS collar study in partnership with Oregon Department of Fish and Wildlife to track deer forage use, and ongoing invasive species removal targeting Hawthorne and Blackberry. The oak restoration

thinning and conifer encroachment reduction project on the west side of NBHMA has resumed and will continue throughout the winter months until CWTD fawning season starts.

Location: Sections 31, 32, and 33, T. 25 S., R. 4 W., W.M.; Sections 35 and 36, T. 25 S., R. 5 W., W.M.; Sections 1, 2, 11, 12, 13, and 14, T. 26 S., R. 5 W., W.M. and Sections 4, 5, 6, 7, and 8, T. 26 S., R. 4 W., W.M.

Issue Identification: Completed.

Analysis: Completed – these activities are covered by the North Bank Habitat Management Area / ACEC Final EIS (September 2000)

Public Comment Period: Completed in September 2000.

Decision Date: September 2000.

Volunteer Opportunities

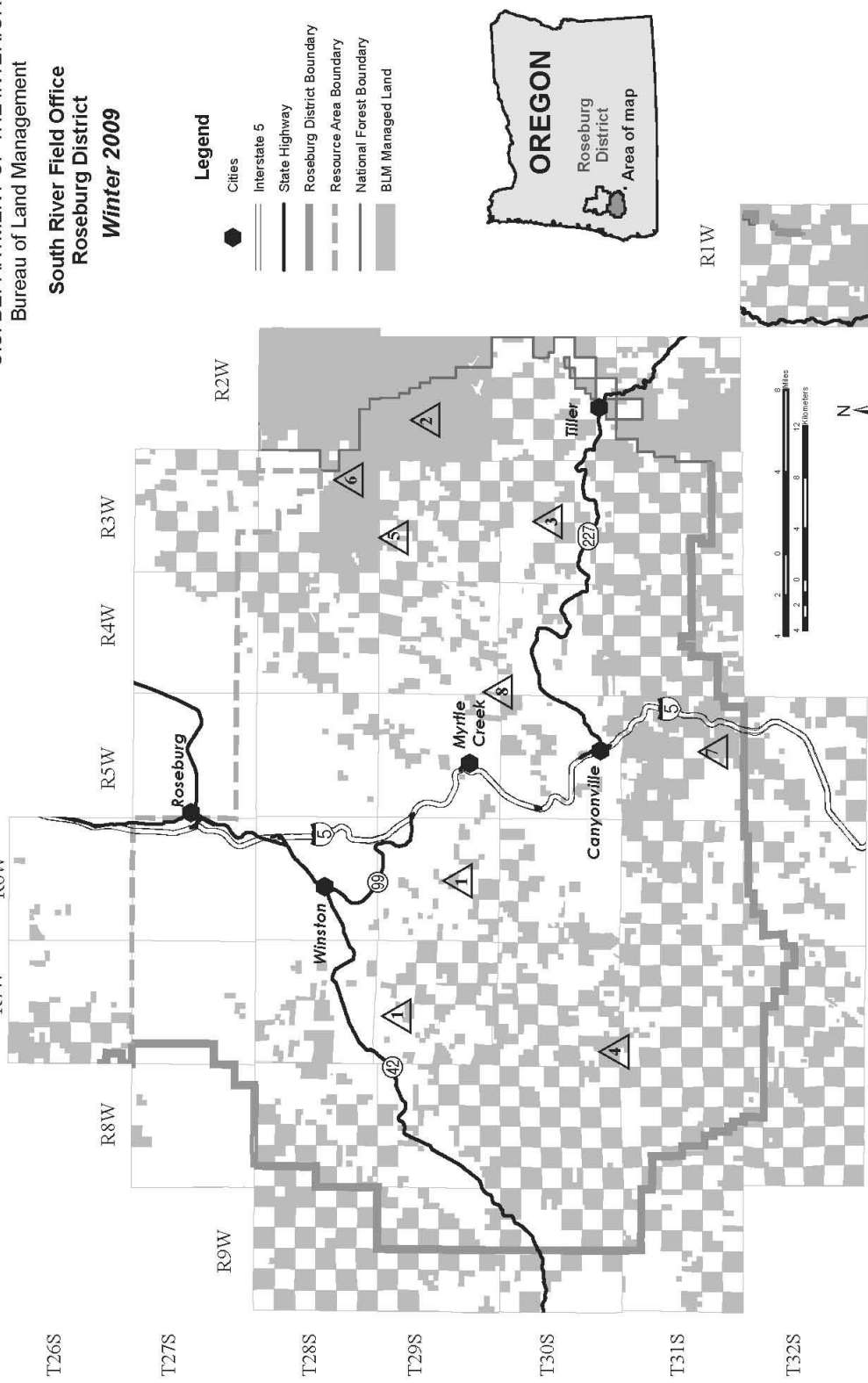
The Roseburg District has specific volunteer opportunities listed on-line at volunteer.gov/gov. The BLM is actively recruiting campground hosts for the Roseburg District. It's an exciting opportunity to live in a beautiful natural setting and work with the public and an outstanding recreation staff. RV site space and hookups are provided (host provides their own RV). Please visit volunteer.gov/gov and search by state (OR) for more information or call/email the District Volunteer Coordinator, Ariel_Hiller@blm.gov, 541-464-3356.



South River Resource Area Map

U.S. DEPARTMENT OF THE INTERIOR
Bureau of Land Management
South River Field Office
Roseburg District
Winter 2009

South River Field Office Planning Update



- 1 South River FY2009 Commercial Thinning
- 2 Middle South Umpqua/Dumont Creek Commercial Thinning and Density Management
- 3 South Umpqua River Watershed Harvest Plan
- 4 Lower Cow Creek Commercial Thinning and Density Management
- 5 South Myrtle Regeneration Harvest Plan
- 6 White Rock Travel Management Plan
- 7 Christian Futures Unilateral Right of Way
- 8 Douglas County Unilateral Right of Way

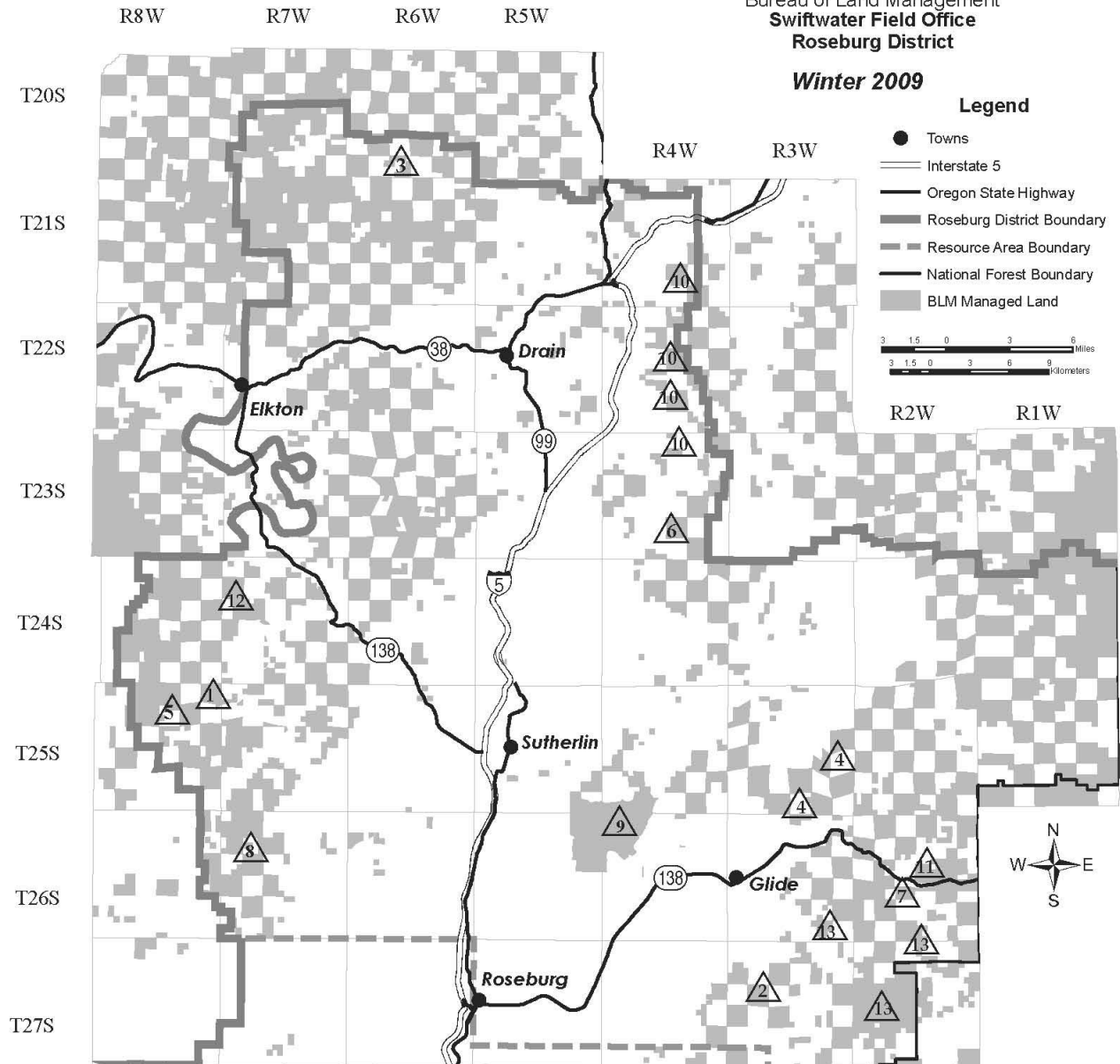
No warranty is made by the Bureau of Land Management as to the accuracy, reliability, or completeness of these data for individual or aggregate use with other data. Original data were compiled from various sources. This information may not meet National Map Accuracy Standards. This product was developed through digital means and may be updated without notification.

Swiftwater Resource Area Map

Swiftwater Field Office Planning Update

U.S. DEPARTMENT OF THE INTERIOR
Bureau of Land Management
Swiftwater Field Office
Roseburg District


Winter 2009



Legend

- Towns
- Interstate 5
- Oregon State Highway
- Roseburg District Boundary
- Resource Area Boundary
- National Forest Boundary
- BLM Managed Land



 No warranty is made by the Bureau of Land Management as to the accuracy, reliability, or completeness of these data for individual or aggregate use with other data. Original data were compiled from various sources. This information may not meet National Map Accuracy Standards. This product was developed through digital means and may be updated without notification.

- | | |
|------------------------------------------|-----------------------------------------------------------|
| △1 Little Wolf Quarry Expansion Project | △7 Tioga Bridge and Susan Creek Day Use Area Improvements |
| △2 Slim Sherlock Commercial Thinning | △8 Mud Den Commercial Thinning |
| △3 Clever Beaver Density Management | △9 North Bank Habitat Management Area |
| △4 Blackbird Commercial Thinning | △10 Northeast Elk Creek Density Management |
| △5 Little Wolf Thrice Density Management | △11 Susan Creek Stew WUI |
| △6 Third Elk Commercial Thinning | △12 Basin Arizona Density Management |



△13 Little River MMX Commercial Thinning

Abbreviations and Definitions

ACEC/RNA – Area of Critical Environmental Concern/Research Natural Area

BO - Biological Opinion.

CX or Categorical Exclusion - Actions which do not have significant effects on the environment and for which an Environmental Analysis (EA) or an Environmental Impact Statement (EIS) is not required.

EA - Environmental Assessment – This is a concise public document that briefly provides evidence and analysis of a proposed Federal action. It is used to determine whether further analysis needs to be done for an Environmental Impact Statement (EIS) or a Finding of No Significant Impact (FONSI).

ERFO – Emergency Relief for Federally Owned Roads

FONSI - Finding of No Significant Impact - This is a document that briefly presents the reasons why the implementation of an action will not result in “significant” environmental impacts (effects) beyond those already addressed in the Roseburg District’s *Proposed Resource Management Plan / Environmental Impact Statement* (PRMP/EIS, October 1994).

IDT - Interdisciplinary Team - A team is a group of resource specialists, whose participation is determined by the issues relating to the project proposal, and who conduct environmental analysis.

Matrix Lands – Comprised of Connectivity/Diversity Blocks and General Forest Management Area land use allocations. Most timber harvest contributing to the Allowable Sale Quantity takes place in this area. Approximately 19% of the Roseburg District BLM is matrix. (Land use allocation under the NWFP & 1995 RMP).

MBF - Thousand board feet.

MMBF - Million board feet.

NEPA - National Environmental Policy Act - A federal law which sets the systematic interdisciplinary analysis to achieve integrated consideration of physical, biological, economic, and other sciences to provide for an informed decision. The process provides for public participation in the development, review and revision of certain activities on Federal Lands.

NWFP - Northwest Forest Plan - A common name for the Record of Decision for Amendments to Forest Service and Bureau of Land Management Planning Documents Within the Range of the Northern Spotted Owl (April 1994). It is also used to refer to the Standards and Guidelines for Management of Habitat for Late-Successional and Old Growth Forest Related Species with the Range of the Northern Spotted Owl which accompanies the Record of Decision.

O&C Lands - Revested Oregon and California Railroad Lands.

Resource Management Plan (RMP) - A land use plan prepared by the BLM in accordance with the Federal Land Policy and Management Act (FLPMA).

Scoping - An early and open part of environmental analysis that allows interested public and other Federal, state and local agencies the opportunity to provide issues, concerns and opportunities relative to proposed project actions. Scoping is required by regulation for Environmental Impact Statements.

USDI - Bureau of Land Management
Roseburg District Office
777 N.W. Garden Valley Blvd.
Roseburg, Oregon 97471