

NEWS Release BUREAU OF LAND MANAGEMENT

For release: August 7, 2015
Release No: OR-100-2015-022

Contact: Steve Lydick
(541) 464-3211

Stouts Fire: Notice of Emergency Closure of Public Lands in Douglas County

Roseburg, Ore. – The Bureau of Land Management, Roseburg District, South River Resource Area and is issuing a temporary emergency closure of public lands in Douglas County Oregon. This closure affects public lands within and adjacent to the **Stouts Fire**, on lands administered by the BLM.

This closure affects public lands inside the established perimeter of the Stout's Creek road and is specific to BLM lands and routes only. This emergency closure is necessary to ensure public safety, land health, and resource integrity during firefighting activities. The fire is not contained or controlled, and ongoing suppression and restoration activities preclude safe public access. The areas affected by this closure order will be posted with appropriate regulation signs at main access and entry points.

The BLM will post closure signs at main entry points to this area. The area is closed to any means of motorized and non-motorized transportation, including foot traffic. This closure will be in effect immediately and will remain in effect until the Stout's Fire is declared controlled.

The Stouts Fire was reported on Thursday, July 30, 2015, burning approximately 11 miles east of Canyonville near the community of Milo. The fire has currently burned over 19,000 acres and is 20 percent contained. Additional information on the Stouts Fire is available at:

<http://inciweb.nwcg.gov/incident/4426/>

###

The BLM manages more land – more than 245 million acres - than any other Federal agency. This land, known as the National System of Public Lands, is primarily located in 12 Western states, including Alaska. The Bureau, with a budget of about \$1 billion, also administers 700 million acres of sub-surface mineral estate throughout the nation. The BLM's multiple-use mission is to sustain the health and productivity of the public lands for the use and enjoyment of present and future generations. The Bureau accomplishes this by managing such activities as outdoor recreation, livestock grazing, mineral development, and energy production, and by conserving natural, historical, cultural, and other resources on public lands.

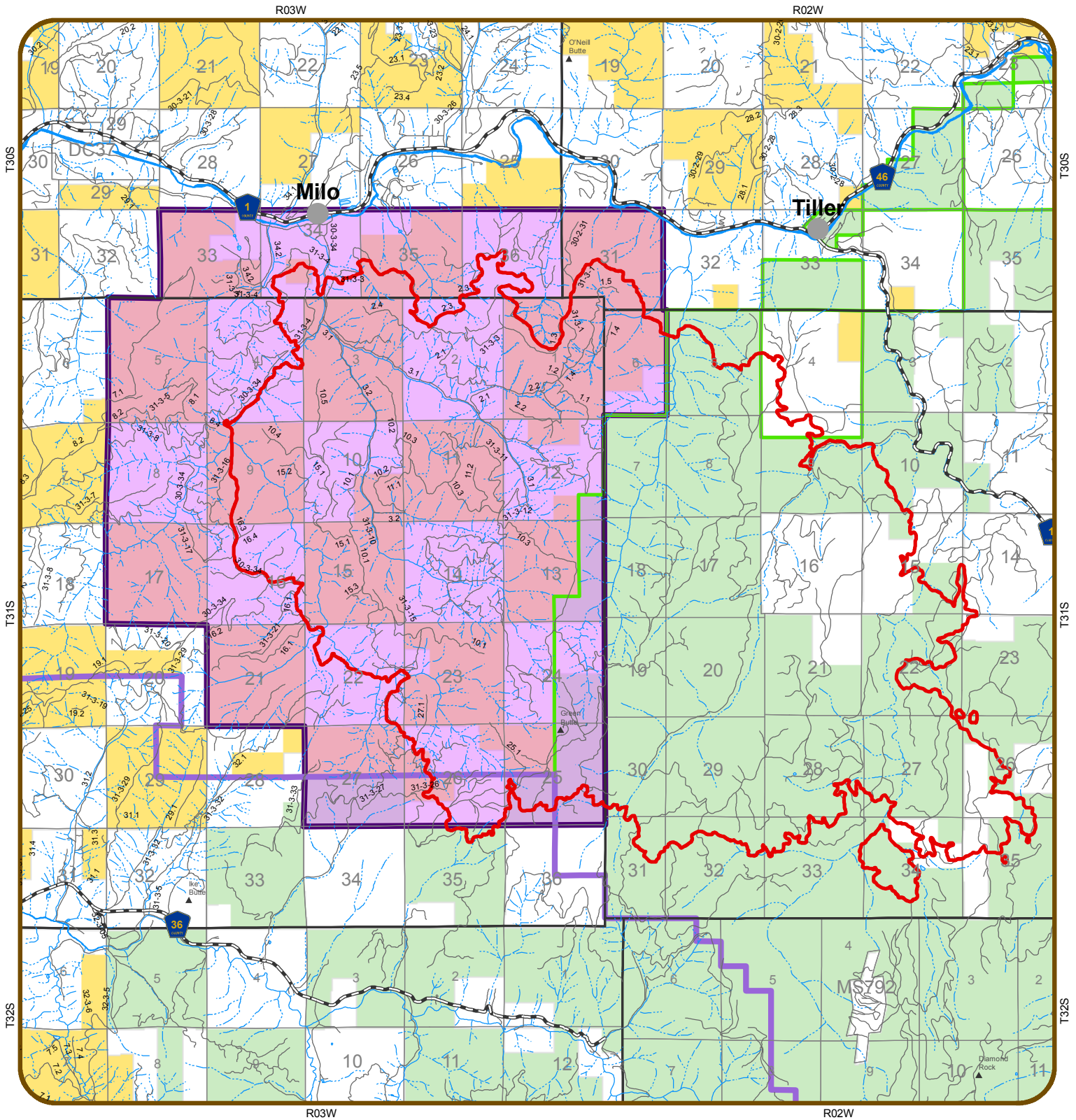
Come join the Oregon/Washington BLM on our Social Media sites for the latest on outdoor opportunities, videos of your public lands, spectacular photos, and a whole lot more!

 www.facebook.com/blmoregon  www.youtube.com/user/blmoregon
 www.flickr.com/photos/blmoregon  www.twitter.com/blmoregon

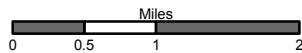




Stouts Creek Area Closure



- Stouts Creek Closure Area
- Stouts Creek Fire Perimeter (2015-08-06, 0330 hrs)
- County Roads
- BLM and Other Roads
- Minor Stream
- Major Stream
- Lake or Reservoir
- Bureau of Land Management
- U.S. Forest Service
- Private/Unknown



United States Department of the Interior
Bureau of Land Management
Roseburg District
777 NW Garden Valley Blvd
Roseburg, Oregon 97471

Date: 8/6/2015

No warranty is made by the Bureau of Land Management as to the accuracy, reliability, or completeness of these data for individual or aggregate use with other data. Original data were compiled from various sources and may be updated without notification.

