



United States Department of the Interior

BUREAU OF LAND MANAGEMENT
Springfield Interagency Office, Northwest Oregon District
3106 Pierce Parkway Suite E, Springfield, Oregon 97477
<http://www.blm.gov>



To: Springfield Interagency Office, Northwest Oregon District Office

Attn: Cynthia L. Phillips, Siuslaw Field Office (541) 683-6776
Terry Ray, Upper Willamette Field Office (541) 683-6417
Debra Wilson, Eugene District (541) 683-6798

PROSPECTUS REQUEST

Please send the following information for the timber sales to be sold on **October 26, 2017**.
(Check appropriate boxes)

Parcel No.	Sale Name	Prospectus	EXHIBITS AND APPRAISALS				
			Road			Slash Disposal	Other (indicate)
			Construction	Maintenance	Decom-missioning		
1	Headlong						
2	Big Bend						
3	Douglas Dunn						
4	Finn Again						

Mail to:

Requested by: _____



United States Department of the Interior

BUREAU OF LAND MANAGEMENT
Springfield Interagency Office, Northwest Oregon District
3106 Pierce Parkway Suite E, Springfield, Oregon 97477
<http://www.blm.gov>



September 27, 2017

This advertisement includes:

Parcel No. 1 – Headlong

Parcel No. 2 – Big Bend

Parcel No. 3 – Douglas Dunn

Parcel No. 4 – Finn Again

TIMBER SALE NOTICE

NOTICE IS HEREBY GIVEN that the Bureau of Land Management will offer for sale timber as described herein for oral auction, pursuant to Instructions to Bidders, as stated on Form No. 5440-9, attached. Written and oral bids will be received by the District Manager, or her representative, at the **SPRINGFIELD INTERAGENCY OFFICE, NORTHWEST OREGON DISTRICT OFFICE, 3106 PIERCE PARKWAY, SPRINGFIELD, OREGON**. The timber sale will commence at 10:00 a.m. on Thursday, **October 26, 2017**.

This Timber Sale Notice does not constitute the decision document for purposes of protest and appeal of a forest management decision. Consistent with 43 CFR Subpart 5003 - Administrative Remedies, the notice of a timber sale, when published as a legal ad in a newspaper of general circulation shall constitute the decision document for purposes of protest and appeal. Protests may be filed with the Contracting Officer within 15 days of the publication of the aforementioned decision document in the newspaper. It is anticipated that the decision document will be published in The Register-Guard newspaper on or about September 27, 2017. BLM does not warrant publication on this exact date. All parties considering protest of the timber sale decision document are encouraged to review the aforementioned newspaper to ensure accurate knowledge of the exact publication date.

A WRITTEN BID on Form 5440-9 at not less than the appraised price on a unit basis per species and the required minimum bid deposit shall be required to participate in oral bidding for each tract.

THE SUCCESSFUL BIDDER, as a condition of award, will be required to complete and/or sign the following forms:

1. Form 5430-11, a certification that the bid was arrived at by the bidder or offerer independently, and was tendered without collusion with any other bidder or offerer.
2. Form 5450-17, Export Determination.

PRE-AWARD QUALIFICATIONS. The high bidder may be required to furnish information to determine the ability to perform the obligations of the contract. If the high bidder is determined not qualified, not responsible or refuses to respond within 15 days of a request for information pertaining to qualifications, the contract may be offered and awarded for the amount of the high bid to the highest of the bidders who is qualified, responsible, and willing to accept the contract.

A PERFORMANCE BOND in an amount not less than 20 percent of the total purchase price will be required for all contracts of \$2,500 or more, but the amount of the bond shall not be in excess of \$500,000, except when the Purchaser opts to increase the minimum bond as provided in 43 CFR 5451.2. A minimum performance bond of not less than \$500 will be required for all installment contracts less than \$2,500.

INSTALLMENT PAYMENTS may be authorized for sales of \$500 or more. Required installments will be determined by BLM. For sales under \$500,000, installments will not be less than 10% of the total purchase price. For sales of \$500,000 or more, installment payments shall be \$50,000.

LOG EXPORT AND SUBSTITUTION. All timber sales, including timber from Federal rights-of-ways, shall be subject to the restrictions relating to the export and substitution of unprocessed timber from the United States in accordance with P.L. 94-165 and 43 CFR 5400 and 5424, as amended.

LOG EXPORT AND SUBSTITUTION RESTRICTIONS. Excepting Port-Orford-cedar, all timber offered for sale hereunder is restricted from export from the United States in the form of unprocessed timber and is prohibited from being used as a substitute for exported private timber. The BLM has revised the log export restrictions special provision to reduce the log branding and painting requirements. The new requirements include branding of one end of all logs with a scaling diameter of over 10 inches. All loads of 11 logs or more, regardless of the diameter of the logs, will have a minimum of 10 logs branded on one end. All logs will be branded on loads of 10 logs or less. One end of all branded logs will be marked with yellow paint. At the discretion of the Contracting Officer, the Purchaser may be required to brand and paint all logs. The Purchaser shall bear any increased costs for log branding and painting.

ADDITIONAL INFORMATION concerning each timber sale tract described herein is available at the above District Office. A copy of the timber sale contract is also available for inspection at the District Office. This prospectus includes maps and tables that cannot be made Section 508 compliant. For help with its data or information, please contact the Northwest Oregon District's Springfield Interagency Office at 541-683-6798.

THE VOLUMES LISTED herein are estimates only, based on 16-foot taper breaks, which must be taken into consideration if comparisons are made with volume predictions based on other standards. The volumes based on 32-foot taper breaks are shown for comparison purposes. No sale shall be made for less than the total purchase price, without regard to the amount bid per unit, even though quantity of timber actually cut or removed or designated for taking is more or less than the estimated volume or quantity so listed.

AN ENVIRONMENTAL ASSESSMENT was prepared for the Finn Again Timber Sale, and a Finding of No Significant Impact has been documented. These documents are available for inspection as background for this sale at the Northwest Oregon District's Springfield Interagency Office.

AN ENVIRONMENTAL ANALYSIS (EA) was prepared for the Long Tom Landscape Level Project, which includes the Headlong timber sale. A Finding of No Significant Impact and Decision Record for the EA have been documented. A Determination of NEPA Adequacy (DNA) has been documented for this sale. These documents are available for inspection as background for this sale at the Northwest Oregon District's Springfield Interagency Office.

AN ENVIRONMENTAL ANALYSIS (EA) was prepared for the Upper Siuslaw Landscape Level Project, which includes the Big Bend and Douglas Dunn timber sales. A Finding of No Significant Impact and Decision Record for the EA have been documented. A Determination of NEPA Adequacy (DNA) has been documented for each of these sales. These documents are available for inspection as background for these sales at the Northwest Oregon District's Springfield Interagency Office.

ACCESS to a sale may be through a locked gate (see individual sale information). Prospective bidders may obtain a key from the Northwest Oregon District's Springfield Interagency Office. Any other persons interested in visiting the timber sale site should first contact the office at 683-6600.

Attachments:

- Form 5440-9
- Form 5430-11
- Form 5450-17
- Form 5450-22

NORTHWEST OREGON DISTRICT
SIUSLAW FIELD OFFICE

**TIMBER SALE NOTICE
LUMP SUM
EUGENE MASTER UNIT**

PARCEL NO.: 1
SALE DATE: October 26, 2017

Contract No.: ORN03-TS18-307, Headlong
Lane County, Oregon: O&C: Oral Auction

Bid Deposit Required: \$37,200.00

All timber designated for cutting on S1/2NE1/4, SE1/4SW1/4, SE1/4, Section 31, T. 15 S., R. 6 W.; Will. Mer.

Estimated Volume 32' Log (MBF)	Species	Estimated Volume 16' Log (MBF)	Appraised Price Per MBF	Estimated Volume Times Approx. Price
1,269	Douglas-fir	1,527	\$ 237.90	\$ 363,273.30
63	Western hemlock	76	\$ 113.10	8,595.60
1,332	TOTALS	1,603		\$ 371,868.90

APPRAISED PRICES are calculated by determining market value through the analytical appraisal method. The minimum bid increment will be \$0.10 per MBF or multiples thereof.

LOG EXPORT RESTRICTIONS: All timber offered for sale hereunder is restricted from export from the United States in the form of unprocessed timber and is prohibited from being used as a substitute for exported private timber.

NOTE: The volume for this timber sale has been calculated using 16 foot eastside Scribner rules, and the 32 foot log volumes are estimates derived from the 16 foot volumes.

CRUISE INFORMATION: Douglas-fir in the right-of-ways have been cruised using the 3P system to select sample trees. The sample trees have been cruised and the volume computed using the **National Cruise Processing Program** for estimating volume in 16-foot lengths and the volume expanded to a total right-of-way volume. A map showing the location of the sample trees is available at the Northwest Oregon District's Springfield Interagency Office.

Volume for Douglas-fir in the Partial Harvest Areas was variable plot cruised. Plot data was then used to calculate v-bar and basal area per acre using the **National Cruise Processing Program**. The basal area was determined with a Relaskop using a 20 BAF. This sale contains a total of 176 plots. 61 sample trees were randomly selected on these plots to determine v-bar. A map showing the location of the sample trees is available at the Northwest Oregon District's Springfield Interagency Office. The timber volume for western hemlock in the Partial Harvest Areas is based on a 100% cruise using the **National Cruise Processing Program** for estimating board foot volume of trees in 16-foot logs.

With respect to merchantable Douglas-fir (sample) trees: The average tree is 14.9" DBHOB; the average log contains 54 bd. ft.; the total gross merchantable volume is approximately 1,567 MBF; and 97% recovery is expected.

CUTTING AREA: Two areas totaling approximately 80 acres must be partial harvested and approximately 2 acres of right-of-way must be clear cut.

ACCESS: Access to the sale is provided by:

1. A public road;
2. BLM existing roads;
3. BLM roads to be constructed;
4. State of Oregon roads used under a State of Oregon/BLM cooperative agreement;
5. Roads covered by a Right-of-Way and Road Use Agreement E-340 between Weyerhaeuser Company and the United States. In the renovation, improvement, and use of private roads, the Purchaser shall enter into a license agreement with Weyerhaeuser Company. The license agreement shall be delivered to Weyerhaeuser Company for execution at least 15 days prior to any use of company roads. See the Prospectus for full terms and conditions of use.

ROAD MAINTENANCE: The Purchaser shall pay BLM a road rockwear fee of \$1,814.18. See Exhibit D map for specification of road maintenance responsibility. Only the map page of Exhibit D is included in the Prospectus. Refer to the contract file for the full Exhibit D.

In addition to the quantities shown below, 500 cubic yards of maintenance rock is required. Additional road reinforcement (rocking) may be required for wet weather haul and will be at the Purchaser's expense. Load tickets are required for maintenance rock accounting.

ROAD CONSTRUCTION:

Spurs A and B

Length: 18.26 Stations

Class: SN-14

Special Requirements in Road Construction: Operations limited to periods of dry weather.

ROAD RENOVATION:

Road Nos. 15-6-31, 15-6-31.3, 15-6-31.8, 16-6-7.1

Length: 135.69 Stations

Class: SN-14/16

Special Requirements in Road Renovation: Operations may be limited to periods of dry weather.

ROAD IMPROVEMENT:

Road Nos. 15-6-31.16 Segs. A and B, 16-6-7.1 Seg. F

Length: 16.40 Stations

Class: SN-14/16

Special Requirements in Road Improvement: Operations limited to periods of dry weather.

Culverts

<u>Diameter:</u>	<u>Length:</u>	<u>Number:</u>
18"	120'	4
24"	40'	1

Suggested Rock Source: Commercial, Noti Vicinity

Estimated Rock Quantities (truck measure)

<u>3/4" minus</u>	<u>1-1/2" minus</u>	<u>3" minus</u>	<u>6" minus</u>	<u>Pit Run</u>
160 cy	1,914 cy	279 cy	1,684 cy	10 cy

Total Estimated Exhibit C Road Costs (construction, renovation, and improvement): \$137,962.07**DURATION OF CONTRACT:** Duration of the contract will be 36 months for cutting and removal of timber.**SPECIAL PROVISIONS:** The contract will contain special provisions regarding road construction, road renovation, road improvement, road maintenance, logging methods, prevention of erosion, falling of trees designated for cutting, logging residue reduction, and submission of a written logging plan specifying landing locations, logging methods, and a logging schedule.

Under Sec. 26 of the timber sale contract, operations may be limited due to weather or soil moisture conditions if it is determined that excessive damage to the soil will occur. This will normally limit tractor logging to July, August, and September.

It is estimated that approximately 240 MBF of additional timber, such as corridor and guyline trees, may be removed under the contract, but it is not included in the advertised sale volume, nor is it included in the timber sale appraisal.

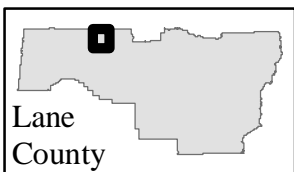
A Special Provision has been added that expands on safety and temporary traffic control measures required under the contract.**A revised Special Provision has been added to the contract which enables the Contracting Officer to suspend the contract to facilitate protection of certain plant or animal species, and/or to modify or terminate the contract when necessary to: (1) comply with the Endangered Species Act or to prevent incidental take of northern spotted owls in accordance with management direction in the Record of Decision (ROD) and Resource Management Plan (RMP), or; (2) comply with a court order, or; (3) protect species which were identified for protection through survey and manage and/or protection buffer standards and guidelines or management direction established in the ROD and RMP.****OTHER SPECIAL REQUIREMENTS:**

- The Purchaser will not have the option of contributing in lieu of performing the slash disposal requirements of this contract. Sec. 42(e) contains explicit instruction on requirements for equipment and personnel involved in pile burning.
- Yarding shall be done with a carriage equipped skyline capable of yarding 1,400 feet slope distance in the Partial Harvest Areas on slopes greater than 35%.

- Approval from the Authorized Officer shall be obtained prior to attaching logging equipment to any reserve tree.
- In the Special Yarding Area, logs may be yarded through the Reserve Area.
- Approximately 3 trees are marked with yellow paint above and below breast height and shall not be felled or damaged during logging operations.
- No timber, mineral, or equipment haul is authorized on Road No. 15-6-31 north of the junction with Road No. 15-6-31.8.
- A gate must be installed on Road No. 15-6-31.16 Seg. A. Gate fabrication and installation shall meet the requirements outlined on the gate installation typical. The gate shall be painted high visibility yellow.
- Upon completion of hauling, all decommissioning shall be completed during the dry season and as directed by the Authorized Officer. Decommissioning measures may include:
 - Decompact skid trails and natural surfaced roads with decompaction equipment, such as a track mounted excavator.
 - Construct drainage dips, waterbars, and/or lead-off ditches.
 - Place logging slash greater than 6 inches in diameter, where available, on surfaces in a discontinuous pattern.
 - Block at entry points using root wads, slash, and/or cull logs.

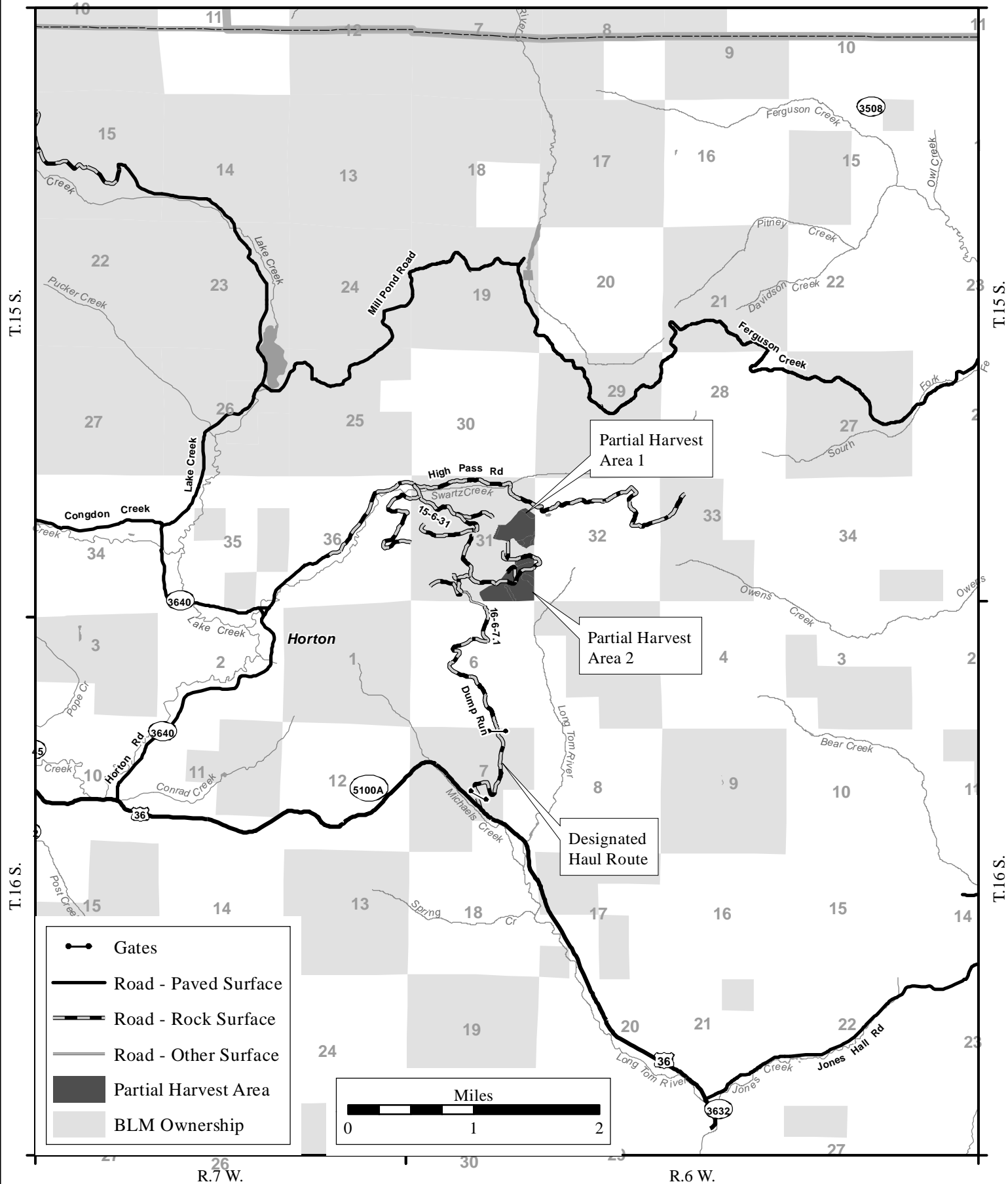
NARRATIVE DESCRIPTION OF HOW TO GET TO THE TIMBER SALE AREA: Access to the sale is through locked gates over private roads. Prospective bidders may obtain a key from the Northwest Oregon District's Springfield Interagency Office and proceed to the sale area. Any other persons interested in visiting the timber sale site should first contact Christopher Finn at (541) 683-6421.

From Cheshire, proceed west on Highway 36 for approximately 11.8 miles. Turn north onto Road No. 16-6-7.1 and follow timber sale signs to the sale area.



Timber Sale Location Map Headlong

T. 15 S., R. 6 W., Sec. 31

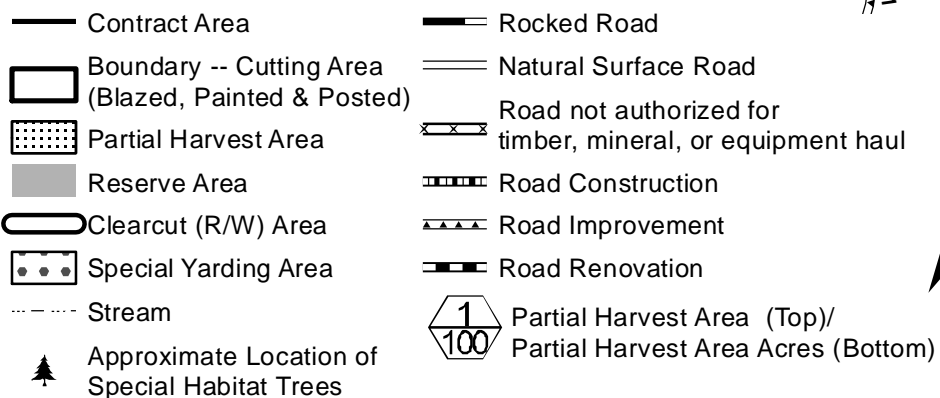
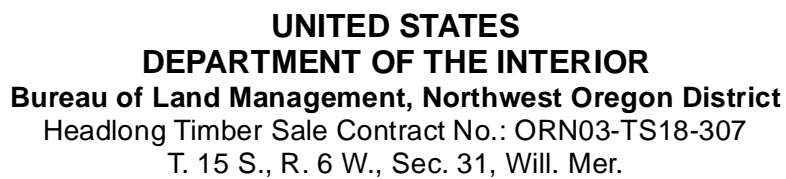


Seasonal Restriction Matrix

Restricted Periods are Shaded and X'd

	Jan	Feb	Mar	Apr	May	June	July	Aug	Sept	Oct	Nov	Dec
	1	15	1	15	1	15	1	15	1	15	1	15
Felling, yarding or loading												
<u>Partial Harvest Area</u>												
<ul style="list-style-type: none"> ▪ April 15 - June 15, both days inclusive ▪ Sap flow seasonal restriction may be conditionally waived. 												
Ground-based yarding												
<u>Partial Harvest Area</u>												
<ul style="list-style-type: none"> ▪ Typically October 15 - June 30 												
Road renovation, construction, improvement; right-of-way logging and clearing												
<u>Right-of-Way Areas</u>												
<ul style="list-style-type: none"> ▪ Typically October 1 - May 31 												
Road and skid road decommissioning												
<ul style="list-style-type: none"> ▪ Typically October 1 - June 30 												

NOTE: This chart is for informational purposes only. Refer to Section 42 Special Provisions of the timber sale contract for exact date restrictions and stipulations.



Total Partial Harvest Area	80
Total Clearcut (R/W) Area	2
Total Reserve Area	198
Total Contract Area	280 A.

Feet

0 500 1,000 1,500

NORTHWEST OREGON DISTRICT
SIUSLAW FIELD OFFICE

**TIMBER SALE NOTICE
LUMP SUM
EUGENE MASTER UNIT**

PARCEL NO.: 2
SALE DATE: October 26, 2017

Contract No.: ORN03-TS18-312, Big Bend
Lane County, Oregon: O&C: Oral Auction

Bid Deposit Required: \$27,800.00

All timber designated for cutting on Lots 3-6 and 10-12, Section 21, T. 19 S., R. 7 W.; Will. Mer.

Estimated Volume 32' Log (MBF)	Species	Estimated Volume 16' Log (MBF)	Appraised Price Per MBF	Estimated Volume Times Approx. Price
930	Douglas-fir	1,074	\$ 254.40	\$ 273,225.60
24	Western hemlock	29	\$ 109.70	3,181.30
13	Red alder	19	\$ 37.70	716.30
1	Western redcedar	1	\$ 828.90	828.90
968	TOTALS	1,123		\$ 277,952.10

APPRAISED PRICES are calculated by determining market value through the analytical appraisal method. The minimum bid increment will be \$0.10 per MBF or multiples thereof.

LOG EXPORT RESTRICTIONS: All timber offered for sale hereunder is restricted from export from the United States in the form of unprocessed timber and is prohibited from being used as a substitute for exported private timber.

NOTE: The volume for this timber sale has been calculated using 16 foot eastside Scribner rules, and the 32 foot log volumes are estimates derived from the 16 foot volumes.

CRUISE INFORMATION: Volume for western hemlock in the Partial Harvest Areas and volumes for western hemlock, red alder, and western redcedar in the right-of-ways were based on a 100% cruise using the **National Cruise Processing Program** for estimating board foot volume of trees in 16 foot logs.

Volume for all Douglas-fir has been cruised using the 3P system to select sample trees. A portion of the sample trees have been cruised and the volume computed using the **National Cruise Processing Program** for estimating volume in 16-foot lengths and the volume expanded to a total sale volume. A map showing the location and description of these sample trees is available at the Northwest Oregon District's Springfield Interagency Office.

With respect to merchantable Douglas-fir (sample) trees: The average tree is 14.0" DBHOB; the average log contains 46 bd. ft.; the total gross merchantable volume is approximately 1,113 MBF; and 97% recovery is expected.

CUTTING AREA: Two areas totaling approximately 53 acres must be partial harvested and approximately 3 acres of right-of-way must be clear cut.

ACCESS: Access to the sale is provided by:

1. Public roads;
2. BLM existing roads

ROAD MAINTENANCE: The Purchaser shall pay BLM a road maintenance fee of \$6,622.56 and a rockwear fee of \$176.02.

In addition to the quantities shown below, 200 cubic yards (truck measure) of maintenance and/or roadside landing rock is required. Additional road reinforcement (rocking) may be required for wet weather haul and will be at the Purchaser's expense. Load tickets are required for maintenance rock accounting.

See Exhibit D map for specification of road maintenance responsibility. Only the map page of Exhibit D is included in the Prospectus. Refer to the contract file for the full Exhibit D.

ROAD RENOVATION:

Road Nos. 19-7-21 and 19-7-21.2

Length: 82.9 Stations

Class: SN-14

Suggested Rock Source: Commercial, Noti Vicinity

Estimated Rock Quantities (cubic yards, truck measure)

<u>3/4" minus</u>	<u>3" minus</u>	<u>6" minus</u>
402	696	174

Total Estimated Exhibit C Road Costs (renovation): \$65,655.96DURATION OF CONTRACT: Duration of the contract will be 36 months for cutting and removal of timber.SPECIAL PROVISIONS: The contract will contain special provisions regarding road renovation, road maintenance, logging methods, prevention of erosion, falling of all trees designated for cutting, logging residue reduction, submission of a written logging plan, landing locations, logging methods, and logging schedule.

Under Sec. 26 of the timber sale contract, tractor logging will be prohibited during periods of excessive soil moisture. This will normally limit tractor logging to July, August, and September.

It is estimated that approximately 112 MBF of additional timber, such as corridor and guyline trees, may be removed under the contract, but it is not included in the advertised sale volume, nor is it included in the timber sale appraisal.

A Special Provision has been added that expands on safety and temporary traffic control measures required under the contract.**A revised Special Provision has been added to the contract which enables the Contracting Officer to suspend the contract to facilitate protection of certain plant or animal species, and/or to modify or terminate the contract when necessary to: (1) comply with the Endangered Species Act or to prevent incidental take of northern spotted owls in accordance with management direction in the Record of Decision (ROD) and Resource Management Plan (RMP), or; (2) comply with a court order, or; (3) protect species which were identified for protection through survey and manage and/or protection buffer standards and guidelines or management direction established in the ROD and RMP.**OTHER SPECIAL REQUIREMENTS:

- No yarding or hauling shall be conducted on natural surfaced roads during periods of wet weather.
- Yarding shall be done with a carriage equipped skyline capable of yarding 1,000 feet slope distance in the Partial Harvest Areas on slopes greater than 35%.
- With the exception of hauling, daily operations shall not be permitted from April 1 through August 5 of each year, both days inclusive; and shall not begin until at least 2 hours after sunrise and shall cease at least 2 hours prior to sunset from August 6 through September 15 of each year, both days inclusive. These restrictions shall not be waived.
- No timber haul shall occur on Road No. 19-7-21.3.
- Trees marked with yellow paint above and below breast height shall not be felled or damaged during logging operations.
- Within 25 feet of Road No. 19-7-21.2 slash shall be piled, covered, and burned within the Partial Harvest Area.
- Upon completion of hauling, all decommissioning shall be completed during the dry season and as directed by the Authorized Officer. Decommissioning measures may include:
 - Decompact skid trails and natural surfaced roads with decompaction equipment, such as a track mounted excavator.
 - Construct drainage dips, waterbars, and/or lead-off ditches.
 - Place logging slash greater than 6 inches in diameter, where available, on surfaces in a discontinuous pattern.
 - Block roads at entry points using root wads, slash, and/or cull logs.

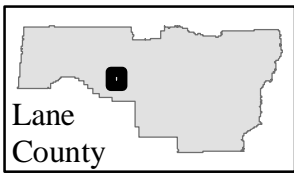
OPTIONAL CONTRIBUTION: The Purchaser will have the option of performing pile burning or contributing \$2,137.91 in lieu thereof. The option must be declared prior to contract execution. Piling and covering are not included in the Optional Contribution and will remain the responsibility of the Purchaser.

If the Purchaser has made a contribution, and later elects to remove all of the slash required to be piled, covered, and burned, the contribution will be refunded.

NARRATIVE DESCRIPTION OF HOW TO GET TO THE TIMBER SALE AREA: Access to the sale is through locked gates. Prospective bidders may obtain a key from the Northwest Oregon District's Springfield Interagency Office and proceed to the sale area. Any other persons interested in visiting the timber sale site should first contact Christopher Finn at (541) 683-6421.

To Access Partial Harvest Area 2: From the intersection of Territorial Highway and Wolf Creek Road (approximately 1.2 miles south of Crow), travel west on Wolf Creek Road 11.6 miles to the junction with Siuslaw Road. Turn west onto Siuslaw Road and continue approximately 1.7 miles to the junction of paved Road Nos. 19-7-25.1 (East Oxbow Road) and 19-7-25 (Upper Siuslaw Road). Continue traveling west (right at the junction) on Upper Siuslaw Road for approximately 6.2 miles to the junction with Road No. 19-7-21.2. Follow the timber sale signs to the sale area.

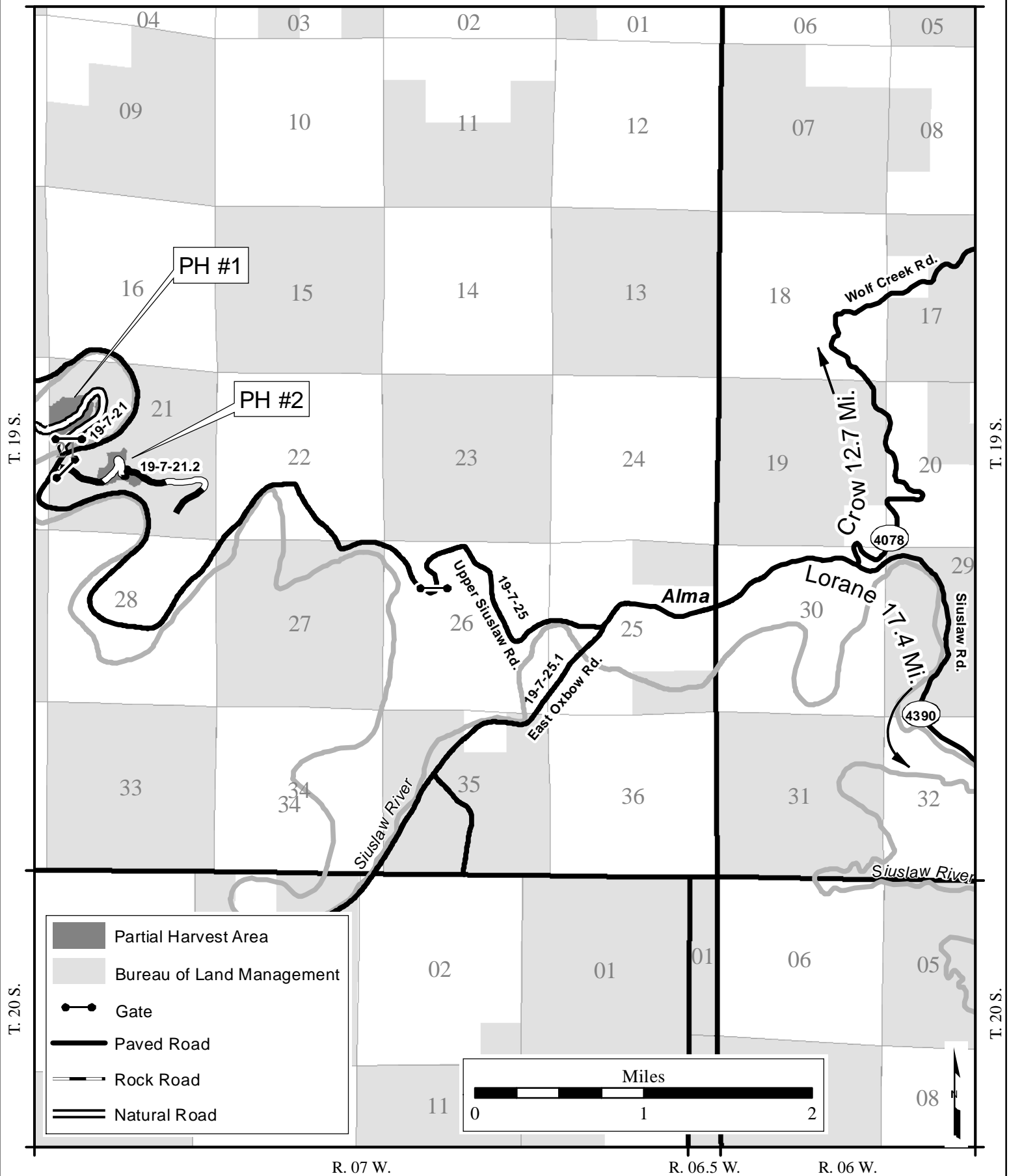
To Access Partial Harvest Area 1: Return to the junction of Upper Siuslaw Road and Road No. 19-7-21.2 and proceed north 450 feet on Upper Siuslaw Road to Road No. 19-7-21. Follow the timber sale signs to the sale area.



Timber Sale Location Map

Big Bend

T. 19 S., R. 7 W., Sec. 21



Seasonal Restriction Matrix

Restricted Periods are Shaded and X'd; 2-hour daily timing restrictions are X'd only.

	Jan		Feb		Mar		Apr		May		June		July		Aug		Sept		Oct		Nov		Dec	
	1	15	1	15	1	15	1	15	1	15	1	15	1	15	1	15	1	15	1	15	1	15	1	15
All operations except hauling																								
Felling, yarding or loading <u>Partial Harvest Areas</u> ■ April 1 – August 5, both days inclusive: Operations are prohibited. ■ August 6 - September 15, both days inclusive: Operations shall not begin until 2 hours after sunrise and shall cease 2 hours prior to sunset.																								
Ground-based yarding <u>Partial Harvest Areas</u> ■ Typically October 1 – June 30; may vary due to weather conditions.																								
Right-of-way logging and clearing <u>Right-of-Way Areas</u> ■ Typically October 1 – May 31; may vary due to weather conditions.																								
Hauling on natural-surfaced roads <u>Partial Harvest Areas</u> ■ Typically October 15 – May 31; may vary due to weather conditions.																								

NOTE: This chart is for informational purposes only. Refer to Section 42 Special Provisions of the timber sale contract for exact date restrictions and stipulations.

NORTHWEST OREGON DISTRICT
SIUSLAW FIELD OFFICE

**TIMBER SALE NOTICE
LUMP SUM
EUGENE MASTER UNIT**

PARCEL NO.: 3
SALE DATE: October 26, 2017

Contract No.: ORN03-TS18-305, Douglas Dunn
Douglas County, Oregon: O&C: Oral Auction

Bid Deposit Required: \$60,100.00

All timber designated for cutting on Lots 4, 5, 7-9, 11, and 12; N1/2NE1/4, SW1/4NE1/4, Section 7, T. 19 S., R. 8 W.; Lots 1-8, W1/2NW1/4, SE1/4NW1/4, N1/2SW1/4, SW1/4SW1/4, Section 13, T. 19 S., R. 9 W.; Will. Mer.

Estimated Volume 32' Log (MBF)	Species	Estimated Volume 16' Log (MBF)	Appraised Price Per MBF	Estimated Volume Times Approx. Price
2,213	Douglas-fir	2,631	\$ 204.30	\$ 537,513.30
623	Western hemlock	730	\$ 86.70	\$ 63,291.00
2,836	TOTALS	3,361		\$ 600,804.30

APPRAISED PRICES are calculated by determining market value through the analytical appraisal method. The minimum bid increment will be \$0.10 per MBF or multiples thereof.

LOG EXPORT RESTRICTIONS: All timber offered for sale hereunder is restricted from export from the United States in the form of unprocessed timber and is prohibited from being used as a substitute for exported private timber.

NOTE: The volume for this timber sale has been calculated using 16 foot eastside Scribner rules, and the 32 foot log volumes are estimates derived from the 16 foot volumes.

CRUISE INFORMATION: Volume for all Douglas-fir and western hemlock in the Partial Harvest Areas was variable plot cruised. Plot data is then used to calculate v-bar and basal area per acre using the National Cruise Processing Program. The basal area was determined with a Relaskop using a 20 BAF. This sale contains a total of 245 plots. A total of 85 sample trees were randomly selected on these plots to determine v-bar.

All Douglas-fir and western hemlock in the right-of-ways have been cruised using the 3P system to select sample trees. The sample trees have been cruised and the volume computed using the National Cruise Processing Program for estimating volume in 16 foot lengths and the volume expanded to a total right-of-way volume. A map showing the location and description of these sample trees is available at the Northwest Oregon District's Springfield Interagency Office.

With respect to merchantable Douglas-fir (sample) trees: The average tree is 12.8" DBHOB; the average log contains 42 bd. ft.; the total gross merchantable volume is approximately 2,747 MBF; and 96% recovery is expected.

CUTTING AREA: Two areas totaling approximately 199 acres must be partial harvested and approximately 7 acres of right-of-way must be clear cut.

ACCESS: Access to the sale is provided by:

1. A public road;
2. BLM existing roads;
3. BLM roads to be constructed;
4. Roads covered by Right-of-Way and Road Use Agreement E-806G between Weyerhaeuser Company and the United States. In the use of private roads, the Purchaser shall enter into a license agreement with Weyerhaeuser Company. The license agreement shall be delivered to Weyerhaeuser Company for execution at least 15 days prior to any use of company roads. See the Prospectus for full terms and conditions of use.
5. Roads covered by Right-of-Way and Road Use Agreement E-806G between Roseburg Resources Company and the United States. In the use of private roads, the Purchaser shall enter into a license agreement with Roseburg Resources Company. The license agreement shall be delivered to Roseburg Resources Company for execution at least 15 days prior to any use of company roads. See the Prospectus for full terms and conditions of use.

ROAD MAINTENANCE: The Purchaser shall pay BLM a road maintenance fee of \$16,419.16 and a rockwear fee of \$417.56. In addition to the quantities shown below, 500 cubic yards (truck measure) of maintenance rock and surface protection rock is required. Additional road reinforcement (rocking) may be required for wet weather haul and will be at the Purchaser's expense. Load tickets are required for maintenance rock accounting. See Exhibit D map for specification of road maintenance responsibility. Only the map page of Exhibit D is included in the Prospectus. Refer to the contract file for the full Exhibit D.

ROAD CONSTRUCTION:

Spurs A, C, E, G Ext., H, I, K, P, Landing Spur; and Road No. 19-8-7.4 Ext.

Length: 60.18 Stations

Class: SN-14

Special Requirements in Road Construction: Operations limited to periods of dry weather.

ROAD RENOVATION:

Spurs D, J, L; Quarry Road; and Road Nos. 18-8-28.1, 19-8-7, 19-8-7.4, 19-8-29.1, 19-9-13, 19-9-13.2, 19-9-13.3, 19-9-13.6, and 19-9-14

Length: 287.94 Stations

Class: SN-14/SN-16

Special Requirements in Road Renovation: Operations may be limited to periods of dry weather.

ROAD IMPROVEMENT:

Spurs B and G

Length: 5.40 Stations

Class: SN-14

Special Requirements in Road Improvement: Operations may be limited to periods of dry weather.

Culverts

<u>Diameter:</u>	<u>Length:</u>	<u>Number:</u>
18"	270'	10

Suggested Rock Source: Commercial, Noti Vicinity

Estimated Rock Quantities (cubic yards, truck measure)

<u>3/4" minus</u>	<u>1.5" minus</u>	<u>3" minus</u>	<u>6" minus</u>
270	261	2,890	4,825

Total Estimated Exhibit C Road Costs (construction, renovation, and improvement): \$314,709.87**DURATION OF CONTRACT:** Duration of the contract will be 36 months for cutting and removal of timber.**SPECIAL PROVISIONS:** The contract will contain special provisions regarding road construction, road renovation, road improvement, road maintenance, road decommissioning, logging methods, prevention of erosion, falling of snags, falling of all trees designated for cutting, logging residue reduction, and submission of a written logging plan specifying landing locations, spur road location, logging methods and logging schedule.

Under Sec. 26 of the timber sale contract, ground based logging will be prohibited during periods of excessive soil moisture. This will normally limit ground based logging to July, August, and September.

It is estimated that 504 MBF of additional timber, such as corridor and guyline trees may be removed under the contract, but it is not included in the advertised sale volume, nor is it included in the timber sale appraisal.

A Special Provision has been added that expands on safety and temporary traffic control measures required under the contract.**A revised Special Provision has been added to the contract which enables the Contracting Officer to suspend the contract to facilitate protection of certain plant or animal species, and/or to modify or terminate the contract when necessary to: (1) Comply with the Endangered Species Act or to prevent incidental take of northern spotted owls in accordance with management direction in the Record of Decision (ROD) and Resource Management Plan (RMP), or; (2) Comply with a court order, or; (3) Protect species which were identified for protection through survey and manage and/or protection buffer standards and guidelines or management direction established in the ROD and RMP.****OTHER SPECIAL REQUIREMENTS:**

- Approximately 6 trees marked with yellow paint above and below breast height in the Approximate Location of Special Habitat Trees shown on Exhibit A shall not be felled or damaged during logging operations.
- Three trees marked with orange paint and/or a yellow metal seed tree tag in the Approximate Location of the Superior Tree shall not be felled or damaged during logging operations.

- In the Special Tailhold Area, approval from the Authorized Officer shall be obtained prior to attaching logging equipment to any tree.
- With the exception of hauling, daily operations within the Special Operating Area N shall not be permitted from March 1 through July 7 of each year, both days inclusive.
- With the exception of hauling, daily operations within the Special Operating Area M shall not be permitted from April 1 through August 5 of each year, both days inclusive.
- With the exception of hauling, daily operations within the Special Operating Area M shall not begin until at least 2 hours after sunrise and shall cease at least 2 hours prior to sunset from August 6 through September 15 of each year, both days inclusive.
- The Purchaser shall rock Spurs A-E, G, G Ext., H-L, P, Quarry Road, Landing Spur and Road Nos. 19-8-7, 19-9-13.2, 19-9-13.3, 19-9-13.6, and 19-9-14 for wet weather haul. If the Purchaser exercises the option to not rock any of these roads, the purchase price will be increased by the cost of surfacing as appraised at the time of sale.
- No yarding or hauling shall be conducted on the above roads prior to rocking, or natural surfaced roads, during periods of wet weather as determined by the Authorized Officer.
- Yarding shall be done with a carriage equipped skyline capable of yarding 1,300 feet slope distance in the Partial Harvest Areas on slopes greater than 35%.
- Road Nos. 18-8-28.1, 19-8-29.1, and 19-9-13 shall not be blocked for more than 20 minutes at a time during operations. At the close of business each day, these roads shall be cleared.
- Surfacing on paved Road Nos. 18-8-28.1, 19-8-29.1, and 19-9-13 shall be protected during logging operations. Any necessary repairs after logging is completed shall be at the Purchaser's expense and in accordance with Exhibit D.
- When felling or yarding within two tree lengths of Road Nos. 18-8-28.1, 19-8-29.1, and 19-9-13, the Purchaser shall provide warning signs and flaggers in accordance with state and federal regulations. Trees designated for cutting shall be directionally felled away from the road.
- The Purchaser shall clean logging, road, decommissioning, and slash disposal equipment, prior to entry on BLM lands.
- Upon completion of haul, all decommissioning shall be completed during the dry season and as directed by the Authorized Officer. Decommissioning measures include:
 - Decompact skid trails and natural surfaced roads with decompaction equipment, such as a track mounted excavator.
 - Construct drainage dips, waterbars, and/or lead-off ditches.
 - Place logging slash greater than 6 inches in diameter, where available, on surfaces in a discontinuous pattern, as directed by the Authorized Officer.
 - Block roads at entry points using root wads, slash, and/or cull logs.
- Section 42(e) contains explicit instruction on requirements for equipment and personnel involved in pile burning.

Optional Contributions: The Purchaser will not have the option of contributing funds in lieu of completing logging residue reduction work.

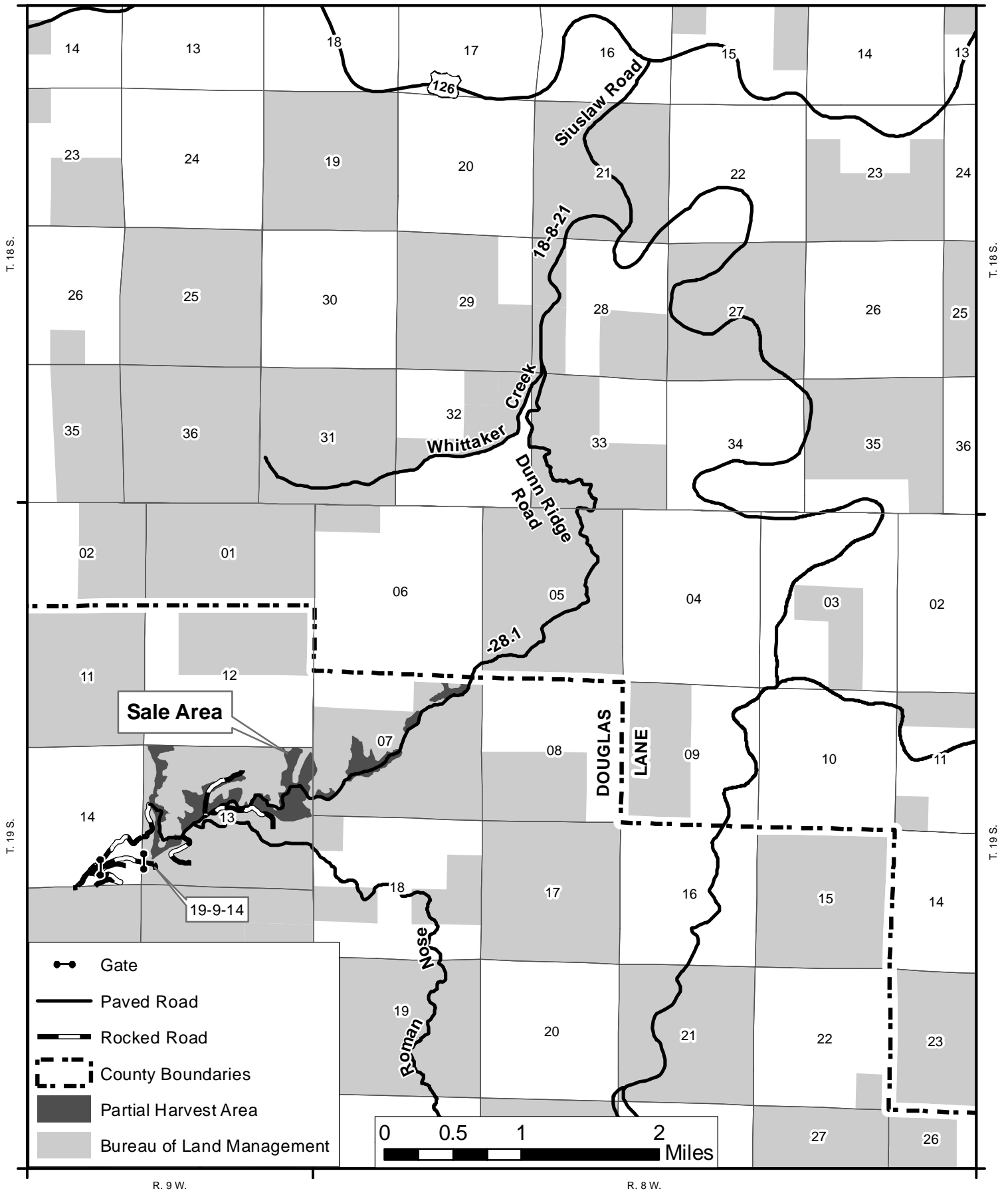
NARRATIVE DESCRIPTION OF HOW TO GET TO THE TIMBER SALE AREA: A portion of the sale is located through locked gates. Prospective bidders may obtain a key at the Northwest Oregon District, Springfield Interagency Office and proceed to the sale area. Any other persons interested in visiting the timber sale site should first contact Christopher Finn at (541) 683-6421.

From Veneta, proceed west on Highway 126 for approximately 20 miles. Turn south onto Siuslaw River Road (County Road 4390) and continue for approximately 1.5 miles. Turn west onto Whittaker Creek Road (Road No. 18-8-21). Proceed approximately 1.5 miles to Dunn Ridge Road (Road. No. 18-8-28.1). Travel south on Dunn Ridge Road for approximately 4 miles; follow the Timber Sale Area signs to the sale area.



Timber Sale Location Map Douglas Dunn

T. 19 S., R. 8 W., Sec. 7
T. 19 S., R. 9 W., Sec. 13



Seasonal Restriction Matrix

Restricted Periods are Shaded and X'd; 2-hour daily timing restrictions are X'd only.

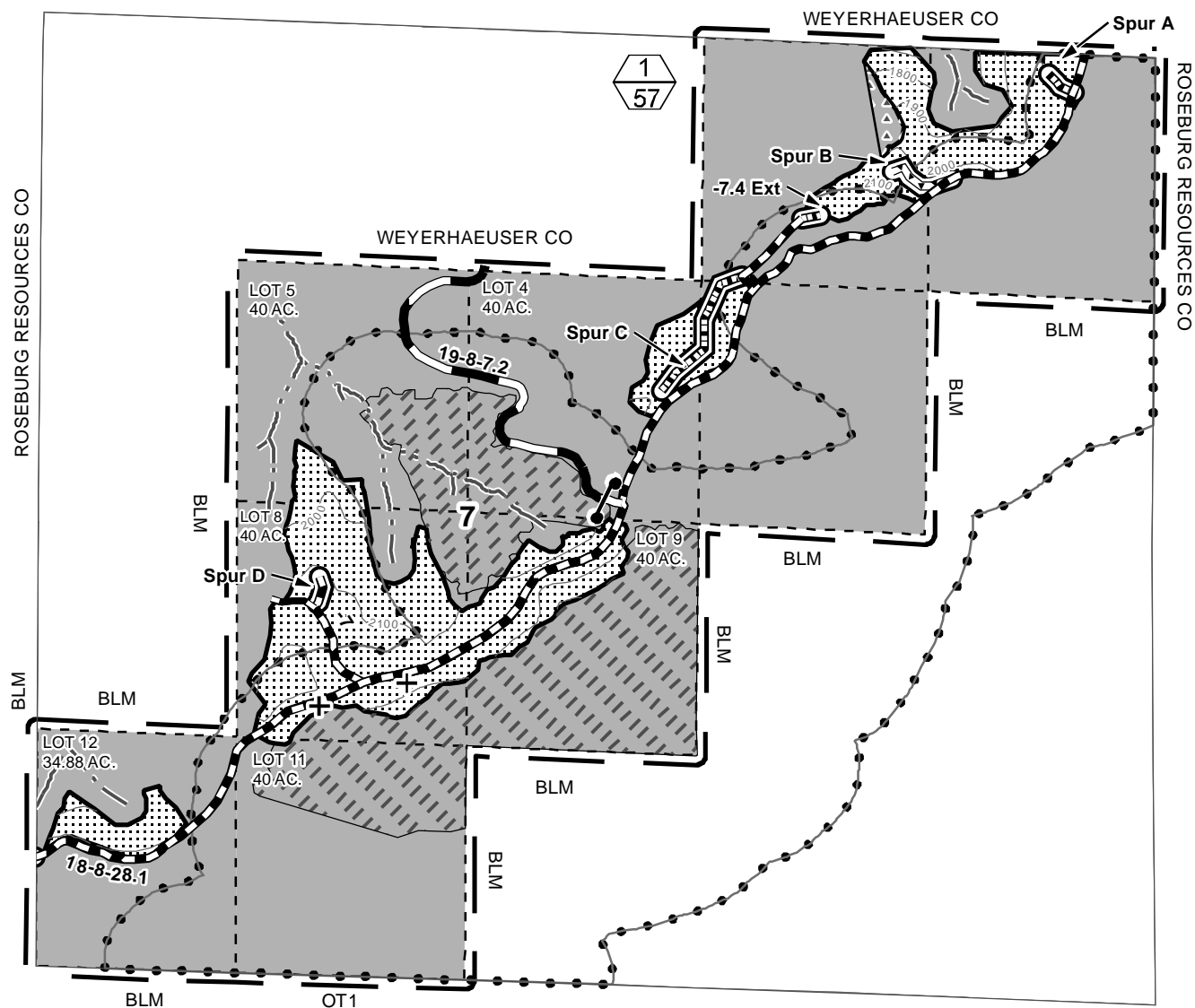
	Jan	Feb	Mar	Apr	May	June	July	Aug	Sept	Oct	Nov	Dec
	1 15	1 15	1 15	1 15	1 15	1 15	1 15	1 15	1 15	1 15	1 15	1 15
All operations except hauling												
<u>Special Operating Area M</u> <ul style="list-style-type: none"> April 1 – August 5, both days inclusive: Operations are prohibited. August 6 – September 15, both days inclusive: Operations shall not begin until 2 hours after sunrise and shall cease 2 hours prior to sunset. 												
All operations except hauling												
<u>Special Operating Area N</u> <ul style="list-style-type: none"> March 1 – July 7, both days inclusive: Operations are prohibited. 												
Felling, yarding or loading												
<u>Partial Harvest Areas</u> <ul style="list-style-type: none"> April 15 – June 15, both days inclusive. Sap flow seasonal restriction may be conditionally waived. 												
Ground-based yarding												
<u>Partial Harvest Areas</u> <ul style="list-style-type: none"> Typically October 15 – June 30; may vary due to weather conditions. 												
Right-of-way logging and clearing												
<u>Right-of-Way Areas</u> <ul style="list-style-type: none"> Typically October 1 – May 31; may vary due to weather conditions. 												
Hauling on natural-surfaced roads or Spurs A-E, G, G Ext., H-L, Quarry Road, and Road Nos. 19-8-7, 19-9-7.4, -13.2, -13.3, -13.6, and -14 unless rocked.												
<ul style="list-style-type: none"> Typically October 15 – May 31; may vary due to weather conditions. 												















NOTE: This chart is for informational purposes only. Refer to Section 42 Special Provisions of the timber sale contract for exact date restrictions and stipulations.

UNITED STATES
DEPARTMENT OF THE INTERIOR

Bureau of Land Management, Northwest Oregon District
Douglas Dunn Timber Sale Contract No.: ORN03-TS18-305
T. 19 S., R. 8 W., Sec. 7, Will. Mer.

Exhibit A
Sheet 1 of 2



- | | | | |
|---|--|---|--|
|  | Contract Area |  | Gate |
|  | Boundary -- Cutting Area
(Blazed, Painted & Posted) |  | Rocked Road |
|  | Partial Harvest Area |  | Road Renovation |
|  | Reserve Area |  | Road Improvement |
|  | Special Yarding Area |  | Road Construction |
|  | Special Operating Area M |  | Stream |
|  | Clearcut (R/W) Area |  | Approximate Location of
the Superior Tree |



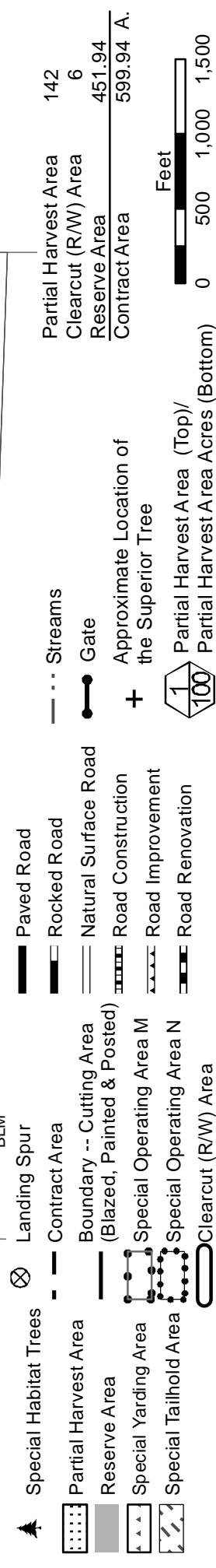
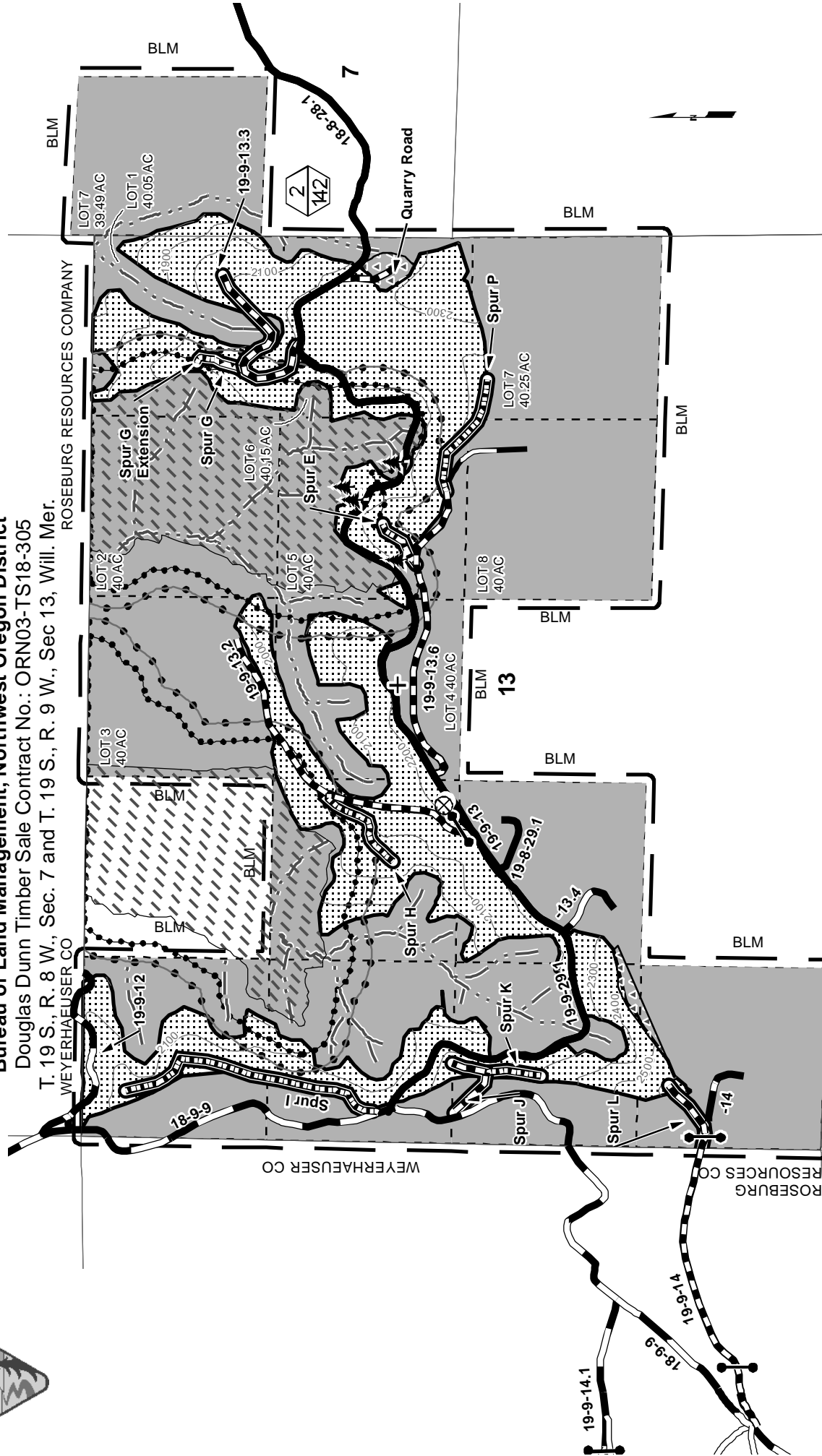
Partial Harvest Area (Top)/
Partial Harvest Area Acres (Bottom)

Partial Harvest Area	57
Clearcut (R/W) Area	1
Reserve Area	296.88
Contract Area	354.88 A.

Total Partial Harvest Area	199
Total Clearcut (R/W) Area	7
Total Reserve Area	743.82
Total Contract Area	949.82A

Feet

0 500 1,000 1,500



NORTHWEST OREGON DISTRICT
UPPER WILLAMETTE FIELD OFFICE

**TIMBER SALE NOTICE
LUMP SUM
EUGENE MASTER UNIT**

PARCEL NO.: 4
SALE DATE: October 26, 2017

Finn Again
Contract No.: ORN05-TS18-504,
Lane County, Oregon: O&C: Oral Auction

Bid Deposit Required: \$72,300.00

All timber designated for cutting on Lots 9-13, 19, and 22, Section 19, T. 16 S., R. 2 E., Will. Mer.

Estimated Volume 32' Log (MBF)	Species	Estimated Volume 16' Log (MBF)	Appraised Price Per MBF	Estimated Volume Times Approx. Price
2,120	Douglas-fir	2,471	\$292.50	\$722,767.50

APPRAISED PRICES are calculated by determining market value through the analytical appraisal method. The minimum bid increment will be \$0.10 per MBF or multiples thereof.

LOG EXPORT RESTRICTIONS: All timber offered for sale hereunder is restricted from export from the United States in the form of unprocessed timber and is prohibited from being used as a substitute for exported private timber.

NOTE: The volume for this timber sale has been calculated using 16 foot eastside Scribner rules, and the 32 foot log volumes are estimates derived from the 16 foot volumes.

CRUISE INFORMATION: Volume for Douglas-fir in the Regen Harvest Area has been cruised using the 3P system to select sample trees. 58 sample trees have been cruised. A portion of the sample trees have been felled, bucked, and scaled and the volume expanded to a total sale volume using the **National Cruise Processing Program**. A map showing the location and description of these sample trees is available at the Springfield Interagency Office.

With respect to merchantable Douglas-fir (sample) trees: The average tree is 17.6" DBHOB; the average log contains 83 bd. ft.; the total gross merchantable volume is approximately 2,608 MBF; and 94% recovery is expected.

CUTTING AREA: Approximately 67 acres must be regeneration harvested.

ACCESS: Access to the sale is provided by:

1. A public road;
2. BLM existing roads;
3. BLM roads to be constructed;
4. Roads covered by Right-of-Way and Road Use Agreement E-662 between Weyerhaeuser Company and the United States. In the construction, renovation, use, and maintenance of private roads, and the use of tailholds and guybacks, the Purchaser shall enter into a license agreement with Weyerhaeuser Company. The license agreement shall be delivered to Weyerhaeuser Company for execution at least 15 days prior to any use of company roads or lands. See the Prospectus for full terms and conditions of use.

ROAD MAINTENANCE: The Purchaser shall pay road use fees of \$7,413.00 and maintenance and rockwear fees estimated at \$8,806.43 to Weyerhaeuser Company. The Purchaser shall pay to the BLM a rockwear fee of \$1,807.92. See the Exhibit D map for specifications of road maintenance responsibility. Only the map page of the Exhibit D is included in the Prospectus. Refer to the contract file for the full Exhibit D.

In addition to the quantities shown below, 250 cubic yards (truck measure) of maintenance rock (gradation to be determined by Authorized Officer) is required. Additional road reinforcement (rocking) may be required for wet weather haul and will be at the Purchaser's expense.

ROAD CONSTRUCTION:

Spurs 19A and 19A1

Length: 11.27 Stations

Class: SN-14

Special Requirements: Operations limited to periods of dry weather.

ROAD RENOVATION:

Road Nos. 16-2E-18.3, -19.1, -19.3, -19.7, and -29

Length: 140.98 Stations

Class: SN-14 / SN-16

Special Requirements: Culvert replacement on streams shall be done between July 1 and August 15 (both days inclusive).

Rock Source: Commercial – Leaburg Vicinity

Estimated Rock Quantities (CY truck measure)

<u>3/4" Minus</u>	<u>1-1/2" Minus</u>	<u>3" Minus</u>	<u>6" Minus</u>
184	2,248	707	743

CULVERTS:

<u>Diameter:</u>	<u>Length:</u>	<u>Number:</u>
18"	32'	1
24"	30'	1
30"	34'	1

Total Estimated Exhibit C Road Costs (construction and renovation): \$137,839.30

DURATION OF CONTRACT: Duration of the contract will be 36 months for cutting and removal of timber.

SPECIAL PROVISIONS: The contract will contain special provisions regarding road construction, road renovation, road maintenance, logging methods, prevention of erosion, logging residue reduction, and submission of a written logging plan specifying landing locations and logging schedule.

Under Sec. 26 of the timber sale contract, ground-based logging will be prohibited during periods of excessive soil moisture. This will normally limit ground-based logging to July, August, and September.

A Special Provision has been added that expands on safety and temporary traffic control measures required under the contract.

A revised Special Provision has been added to the contract which enables the Contracting Officer to suspend the contract to facilitate protection of certain plant or animal species, and/or to modify or terminate the contract when necessary to: (1) Comply with the Endangered Species Act or to prevent incidental take of northern spotted owls in accordance with management direction in the Record of Decision (ROD) and Resource Management Plan (RMP), or; (2) Comply with a court order, or; (3) Protect species which were identified for protection through survey and manage and/or protection buffer standards and guidelines or management direction established in the ROD and RMP.

OTHER SPECIAL REQUIREMENTS:

1. No felling, yarding, or loading is permitted in or through the Reserve Area shown on Exhibit A.
2. All reserve trees within the Regen Harvest Area felled for safety and operational reasons shall remain on site.
3. No harvest activities shall occur in the Regen Harvest Area between March 1 and July 15, both days inclusive. These restrictions are for wildlife purposes and may be modified (reduced or extended) based on relevant survey information.
4. The Purchaser shall be required to clean logging, road, decommissioning, and slash piling equipment prior to entry on BLM lands.
5. Avoid or minimize the number of yarding corridors through areas of Grouped Retention Trees.
6. The Purchaser shall provide a map of requested skyline and skid trail locations a minimum of seven (7) working days in advance of cutting to obtain approval of the locations from the Authorized Officer.
7. Within the Potential Logging Residue Reduction areas, the Purchaser shall slash, pile and cover logging residue.
8. Within the Potential Area of Broadcast Burn the Purchaser shall construct fire line and apply prescribed fire.
9. At the completion of yarding, the Purchaser shall decompact entire skid trail prism to a depth of 18 inches with decompaction equipment.
10. Feller buncher operations may be permitted in ground based areas with a written waiver request by the Purchaser and approval by Authorized Officer.
11. Whole tree yarding, or yarding with tops attached, will be required, unless otherwise approved by the Authorized Officer.
12. The Purchaser shall be required to spread BLM-provided seed and mulch at culverts and designated areas.
13. The Purchaser will be required to file a Notification of Operations with the Oregon Department of Forestry office for all harvest operations and road construction and renovation on BLM and private lands.

OPTIONAL CONTRIBUTION: The Purchaser will have the option of performing pile burning, constructing fire trails, and performing prescribed burn and mop-up or contributing \$32,238.25 in lieu thereof. The option must be declared prior to contract execution. Piling and covering are not included in the Optional Contribution and will remain the responsibility of the Purchaser.

NARRATIVE DESCRIPTION OF HOW TO GET TO SALE AREA:

Portions of this sale are accessed through locked gates over private land. Prospective bidders may obtain a key from the Springfield Interagency Office and proceed to the sale area. Any other persons interested in visiting the timber sale should first contact Brian Bickford at 541-683-6164.

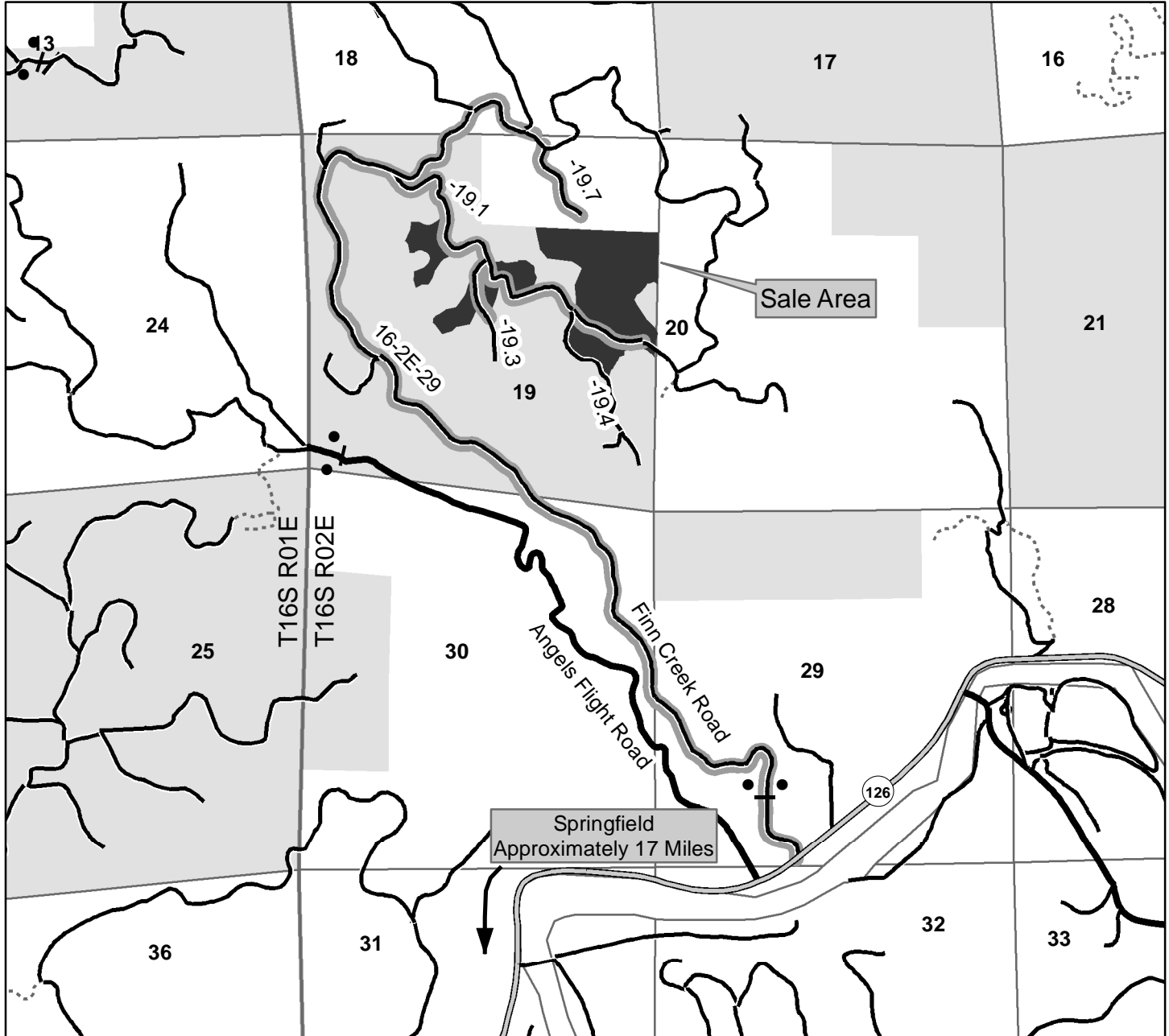
To Harvest Area: From Springfield, proceed east on Highway 126 for approximately 17 miles (approximately 500 ft. past Angels Flight Road) and turn north onto Road No. 16-2E-29. Proceed north for approximately 3.0 miles and turn southeast on Road No. 16-2E-19.1. Proceed on 16-2E-19.1 and follow timber sale signs to the sale area.



Timber Sale Location Map

Sale Name: Finn Again

T. 16 S., R. 2 E., Sec. 19 WILL. MER., NORTHWEST OREGON DISTRICT, UPPER WILLAMETTE FIELD OFFICE

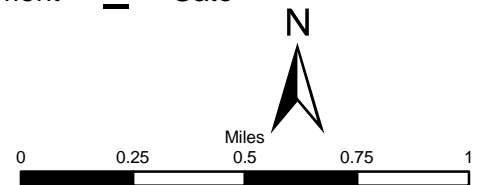


Travel Route Harvest Area Bureau of Land Management Gate

NARRATIVE DESCRIPTION OF HOW TO GET TO SALE AREA:

Portions of this sale are accessed through locked gates over private land. Prospective bidders may obtain a key from the Springfield Interagency Office and proceed to the sale area. Any other persons interested in visiting the timber sale should first contact Brian Bickford at 541-683-6164.

For Harvest Area: From Springfield, proceed east on Highway 126 for approximately 17 miles (approximately 500 ft. past Angels Flight Road) and turn north onto Road No. 16-2E-29. Proceed north for approximately 3.0 miles and turn southeast on Road No. 16-2E-19.1. Proceed on 16-2E-19.1 and follow timber sale signs to sale area.



4/18/2017

No warranty is made by the Bureau of Land Management as to the accuracy, reliability, or completeness of these data for individual or aggregate use with other data. Original data were compiled from various sources. This information may not meet National Map Accuracy Standards. This product was developed through digital means and may be updated without notification.

Seasonal Restriction Matrix



Restricted Activity:	Jan	Feb	Mar	Apr	May	June	July	Aug	Sept	Oct	Nov	Dec
	1	15	1	15	1	15	1	15	1	15	1	15
Road Construction, Decommissioning, and Ground-based yarding <ul style="list-style-type: none">▪ October 1 – June 30▪ May vary due to weather conditions; soil moisture still overrides weather conditions												
Stream Culvert Installation and Removal <ul style="list-style-type: none">▪ August 16 – June 30, both days inclusive												
Wildlife Seasonal Restriction Harvest Activities and Road Work <ul style="list-style-type: none">▪ March 1 – July 15, both days inclusive												

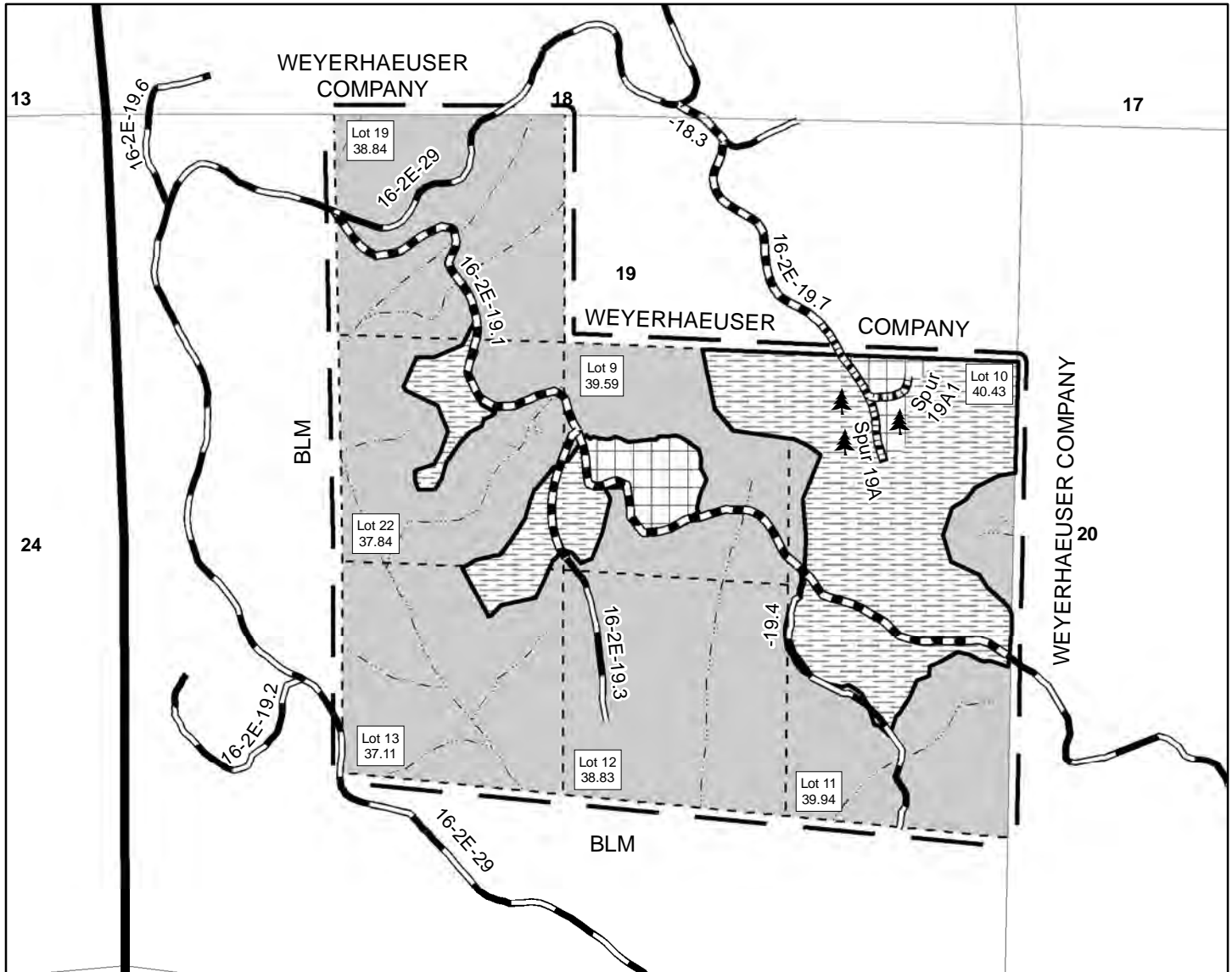
NOTE: This chart is for informational purposes only. Refer to Section 42 Special Provisions of the timber sale contract for exact date restrictions and specifications. Subject to transient winter snow, elevation ranges from 1300-1700 feet.



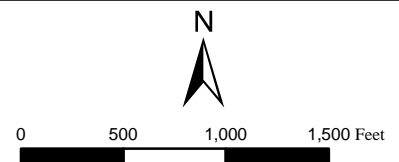
UNITED STATES
DEPARTMENT OF THE INTERIOR
BUREAU OF LAND MANAGEMENT

EXHIBIT A
Sheet 1 of 1

FINN AGAIN TIMBER SALE CONTRACT NO. ORN05-TS18-504
T. 16 S., R. 2 E., SEC. 19, WILL. MER., NORTHWEST OREGON DISTRICT



- Regen Harvest Area - Cable
- Regen Harvest Area - Ground-based
- Boundary of Cutting Area - Posted, Painted
- Reserve Area
- Contract Area
- Construction - Rock
- Renovation
- Rocked Road
- Stream
- Grouped Retention Trees



TOTAL FOR SECTION 19	
HARVEST AREA	67.00
RESERVE AREA	205.58
CONTRACT AREA	272.58 Acres

United States Department of the Interior
Bureau of Land Management
Oregon State Office
P.O. Box 2965
Portland, Oregon 97208-2965

No warranty is made by the Bureau of Land Management as to the accuracy, reliability, or completeness of these data for individual or aggregate use with other data. Original data were compiled from various sources. This information may not meet National Map Accuracy Standards. This product was developed through digital means and may be updated without notification.