



United States Department of the Interior
BUREAU OF LAND MANAGEMENT
3106 Pierce Parkway, Suite E
Springfield, Oregon 97477
<http://www.blm.gov>



To: Eugene District Office

Attn: Cynthia L. Phillips, Siuslaw Resource Area (541) 683-6776
Terry Ray, Upper Willamette Resource Area (541) 683-6417
Debra Wilson, Eugene District (541) 683-6798

PROSPECTUS REQUEST

Please send the following information for the timber sales to be sold on **March 27, 2014**.
(Check appropriate boxes)

Parcel No.	Sale Name	Prospectus	EXHIBITS AND APPRAISALS				
			Road			Slash Disposal	Other (<i>indicate</i>)
			Construction	Maintenance	Decom- missioning		
1	Burnt Bottle						
2	Just Deed It						
3	McGowan Too						

Mail to:

Requested by: _____



United States Department of the Interior
BUREAU OF LAND MANAGEMENT
3106 Pierce Parkway, Suite E
Springfield, Oregon 97477
<http://www.blm.gov>



February 26, 2014

This advertisement includes:

Parcel No. 1 - Burnt Bottle
Parcel No. 2 - Just Deed It
Parcel No. 3 - McGowan Too

TIMBER SALE NOTICE

NOTICE IS HEREBY GIVEN that the Bureau of Land Management will offer for sale timber as described herein for oral auction, pursuant to Instructions to Bidders, as stated on Form No. 5440-9, attached. Written and oral bids will be received by the District Manager, or her representative, at the **EUGENE DISTRICT OFFICE, 3106 PIERCE PARKWAY, SPRINGFIELD, OREGON**. The timber sale will commence at 10:00 a.m. on Thursday, **March 27, 2014**.

This Timber Sale Notice does not constitute the decision document for purposes of protest and appeal of a forest management decision. Consistent with 43 CFR Subpart 5003 - Administrative Remedies, the notice of a timber sale, when published as a legal ad in a newspaper of general circulation shall constitute the decision document for purposes of protest and appeal. Protests may be filed with the Contracting Officer within 15 days of the publication of the aforementioned decision document in the newspaper. It is anticipated that the decision document will be published in The Register-Guard newspaper on or about February 26, 2014. BLM does not warrant publication on this exact date. All parties considering protest of the timber sale decision document are encouraged to review the aforementioned newspaper to ensure accurate knowledge of the exact publication date.

A WRITTEN BID on Form 5440-9 at not less than the appraised price on a unit basis per species and the required minimum bid deposit shall be required to participate in oral bidding for each tract.

THE SUCCESSFUL BIDDER, as a condition of award, will be required to complete and/or sign the following forms:

1. Form 5430-11, a certification that the bid was arrived at by the bidder or offerer independently, and was tendered without collusion with any other bidder or offerer.
2. Form 5450-17, Export Determination.

PRE-AWARD QUALIFICATIONS. The high bidder may be required to furnish information to determine the ability to perform the obligations of the contract. If the high bidder is determined not qualified, not responsible or refuses to respond within 15 days of a request for information pertaining to qualifications, the contract may be offered and awarded for the amount of the high bid to the highest of the bidders who is qualified, responsible, and willing to accept the contract.

A PERFORMANCE BOND in an amount not less than 20 percent of the total purchase price will be required for all contracts of \$2,500 or more, but the amount of the bond shall not be in excess of \$500,000, except when the Purchaser opts to increase the minimum bond as provided in 43 CFR 5451.2. A minimum performance bond of not less than \$500 will be required for all installment contracts less than \$2,500.

INSTALLMENT PAYMENTS may be authorized for sales of \$500 or more. Required installments will be determined by BLM. For sales under \$500,000, installments will not be less than 10% of the total purchase price. For sales of \$500,000 or more, installment payments shall be \$50,000.

LOG EXPORT AND SUBSTITUTION. All timber sales, including timber from Federal rights-of-ways, shall be

subject to the restrictions relating to the export and substitution of unprocessed timber from the United States in accordance with P.L. 94-165 and 43 CFR 5400 and 5424, as amended.

LOG EXPORT AND SUBSTITUTION RESTRICTIONS. Excepting Port-Orford-cedar, all timber offered for sale hereunder is restricted from export from the United States in the form of unprocessed timber and is prohibited from being used as a substitute for exported private timber.

The BLM has revised the log export restrictions special provision to reduce the log branding and painting requirements. The new requirements include branding of one end of all logs with a scaling diameter of over 10 inches. All loads of 11 logs or more, regardless of the diameter of the logs, will have a minimum of 10 logs branded on one end. All logs will be branded on loads of 10 logs or less. One end of all branded logs will be marked with yellow paint. At the discretion of the Contracting Officer, the Purchaser may be required to brand and paint all logs. The Purchaser shall bear any increased costs for log branding and painting.

ADDITIONAL INFORMATION concerning each timber sale tract described herein is available at the above District Office. A copy of the timber sale contract is also available for inspection at the District Office. This prospectus includes maps and tables that cannot be made Section 508 compliant. For help with its data or information, please contact the Eugene District Office at 541-683-6798.

THE VOLUMES LISTED herein are estimates only, based on 16-foot taper breaks, which must be taken into consideration if comparisons are made with volume predictions based on other standards. The volumes based on 32-foot taper breaks are shown for comparison purposes. No sale shall be made for less than the total purchase price, without regard to the amount bid per unit, even though quantity of timber actually cut or removed or designated for taking is more or less than the estimated volume or quantity so listed.

ENVIRONMENTAL ASSESSMENTS were prepared for the Burnt Bottle and McGowan Too sales, and Findings of No Significant Impact have been documented. These documents are available for inspection as background for these sales at the Eugene District Office.

AN ENVIRONMENTAL ANALYSIS (EA) was prepared for the Long Tom Landscape Plan Project, which includes the Just Deed It timber sale. A Finding of No Significant Impact and Decision Record for the EA have been documented. A Determination of NEPA Adequacy (DNA) has been documented for this sale. These documents are available for inspection as background for this sale at the Eugene District Office.

ACCESS to a sale may be through a locked gate (see individual sale information). Prospective bidders may obtain a key from the Eugene District Office. Any other persons interested in visiting the timber sale site should first contact the District Office at 683-6600.

Attachments:

- Form 5440-9
- Form 5430-11
- Form 5450-17
- Form 5450-22

EUGENE DISTRICT
SIUSLAW RESOURCE AREA

PARCEL NO.: 1
SALE DATE: March 27, 2014

Tract No. E-14-517 Burnt Bottle
Lane County, Oregon: O&C

Bid Deposit Required: \$43,400.00

All timber designated for cutting on Lots 12, 13, 17 Section 3, T. 20 S., R. 6 W., Will. Mer.

Estimated Volume 32' Log (MBF)	Species	Estimated Volume 16' Log (MBF)	Appraised Price Per MBF	Estimated Volume Times Approx. Price
609	Douglas-fir	713	\$ 304.00	\$ 216,752.00

APPRAISED PRICES are calculated by determining market value through the analytical appraisal method. The minimum bid increment will be \$0.10 per MBF or multiples thereof.

LOG EXPORT RESTRICTIONS: All timber offered for sale hereunder is restricted from export from the United States in the form of unprocessed timber and is prohibited from being used as a substitute for exported private timber.

NOTE: The volume for this timber sale has been calculated using 16 foot eastside Scribner rules, and the 32 foot log volumes are estimates derived from the 16 foot volumes.

CRUISE INFORMATION: The timber volumes were based on a 100% cruise using the **National Cruise Processing Program** for estimating board foot volume of trees in 16-foot logs.

All species have been cruised using the 3P system to select sample trees and the volume expanded to a total sale volume using the **National Cruise Processing Program**. Sample trees have been cruised and the volume computed using the **National Cruise Processing Program** for estimating volume in 16-foot lengths and the volume expanded to a total sale volume. A map showing the location and description of these sample trees is available at the Eugene District Office.

With respect to merchantable Douglas-fir (sample) trees: The average tree is 17.6" DBHOB; the average log contains 77 bd. ft.; the total gross merchantable volume is approximately 775 MBF; and 92% recovery is expected.

CUTTING AREA: One area totaling approximately 55 acres must be partial harvested.

ACCESS: Access to the sale is provided by:

1. A public road;
2. BLM existing roads;
3. Roads covered by a Right-of-Way and Road Use Agreement E-339 between Weyerhaeuser Company and the United States. In the use of private roads, the Purchaser shall enter into a license agreement with Weyerhaeuser Company. The license agreement shall be delivered to Weyerhaeuser Company for execution at least 15 days prior to any use of company roads. See the Prospectus for full terms and conditions of use.

ROAD MAINTENANCE: The Purchaser shall pay road use fees of \$713.00 and rockwear fees estimated at \$171.19 to Weyerhaeuser Company. The Purchaser shall pay BLM a road maintenance fee of \$795.35 and a rockwear fee of \$574.51. See Exhibit D map for specification of road maintenance responsibility. Only the map page of Exhibit D is included in the Prospectus. Refer to the contract file for the full Exhibit D.

ROAD RENOVATION: Required

Road Nos: 20-6-3 and 20-6-4

Class: SN-14

Length: 2.69 Miles

Total estimated renovation cost: \$2,966.77

Special Requirements in Road Renovation: Operations limited to periods of dry weather. Within the Special Operating Area, from April 1 through September 15, both days inclusive, daily operations shall not begin until at least 2 hours after sunrise and shall cease at least 2 hours prior to sunset, on Road No. 20-6-3. This restriction shall not be waived.

ROAD IMPROVEMENT: Required

Suggested Rock Source: Commercial, Lorane Vicinity

Road No. 20-6-3.3

Class: SN-14

Length: 0.17 Miles

Surfacing: 3" minus

Width: 12'

Compacted Depth: 6"

Estimated Quantity: 290 cy (truck measure)
Total estimated improvement cost: \$12,678.78
Special Requirements in Road Improvement: Operations limited to periods of dry weather.

DURATION OF CONTRACT: Duration of the contract will be 24 months for cutting and removal of timber.

SPECIAL PROVISIONS: The contract will contain special provisions regarding road renovation, road improvement, road maintenance, logging methods, prevention of erosion, falling of snags, and submission of a written logging plan specifying spur road locations, landing locations, logging methods, and logging schedule.

Under Sec. 25 of the timber sale contract, tractor logging will be prohibited during periods of excessive soil moisture. This will normally limit tractor logging to July, August and September.

It is estimated that approximately 100 MBF of additional timber, such as corridor and guyline trees, may be removed under the contract, but it is not included in the advertised sale volume, nor is it included in the timber sale appraisal.

A revised Special Provision has been added to the contract which enables the Contracting Officer to allow the Purchaser to remove material from the Contract Area instead of disposing of slash by piling, covering and burning.

This contract contains an updated and revised contract form. Please contact Debra Wilson at 541-683-6798 if you have questions.

OTHER SPECIAL REQUIREMENTS:

- No yarding or hauling shall be conducted on natural surfaced roads during periods of wet weather as determined by the Authorized Officer.
- Yarding shall be done with a carriage equipped skyline capable of yarding 1,100 feet slope distance in the Partial Harvest Area on slopes greater than 35%.
- Approximately 11 trees are marked with yellow paint above and below breast height in the Approximate Location of Special Habitat Trees. These trees shall not be felled or damaged during logging operations.
- With the exception of hauling, daily operations within the Special Operating Area shall not be permitted from April 1 through August 5 of each year, both days inclusive. From August 6 through September 15 of each year, both days inclusive, daily operations shall not begin until at least 2 hours after sunrise and shall cease at least 2 hours prior to sunset. This restriction shall not be waived.
- The Purchaser shall rock Road No. 20-6-3.3 for wet weather haul. If the Purchaser exercises the option to not rock any of this road, the purchase price will be increased by the cost of surfacing as appraised at the time of sale.
- Upon completion of hauling, all decommissioning shall be completed during the dry season and as directed by the Authorized Officer. Decommissioning measures include:
 - Decompact skid trails and natural surfaced roads with decompaction equipment, such as a track mounted excavator.
 - Construct drainage dips, waterbars, and/or lead-off ditches.
 - Place logging slash, where available, on decompacted skid trails.
 - Block at entry points using stumps, slash, and/or cull logs.
- The Exhibit F contains explicit instruction on requirements for equipment and personnel involved in pile burning.

OPTIONAL CONTRIBUTION: The Purchaser will have the option of performing pile burning or contributing \$675.21 in lieu thereof. The option must be declared prior to contract execution. Piling and covering are not included in the Optional Contribution and will remain the responsibility of the Purchaser.

If the Purchaser has made a contribution and later elects to remove all of the slash required to be piled, covered, and burned, the contribution will be refunded.

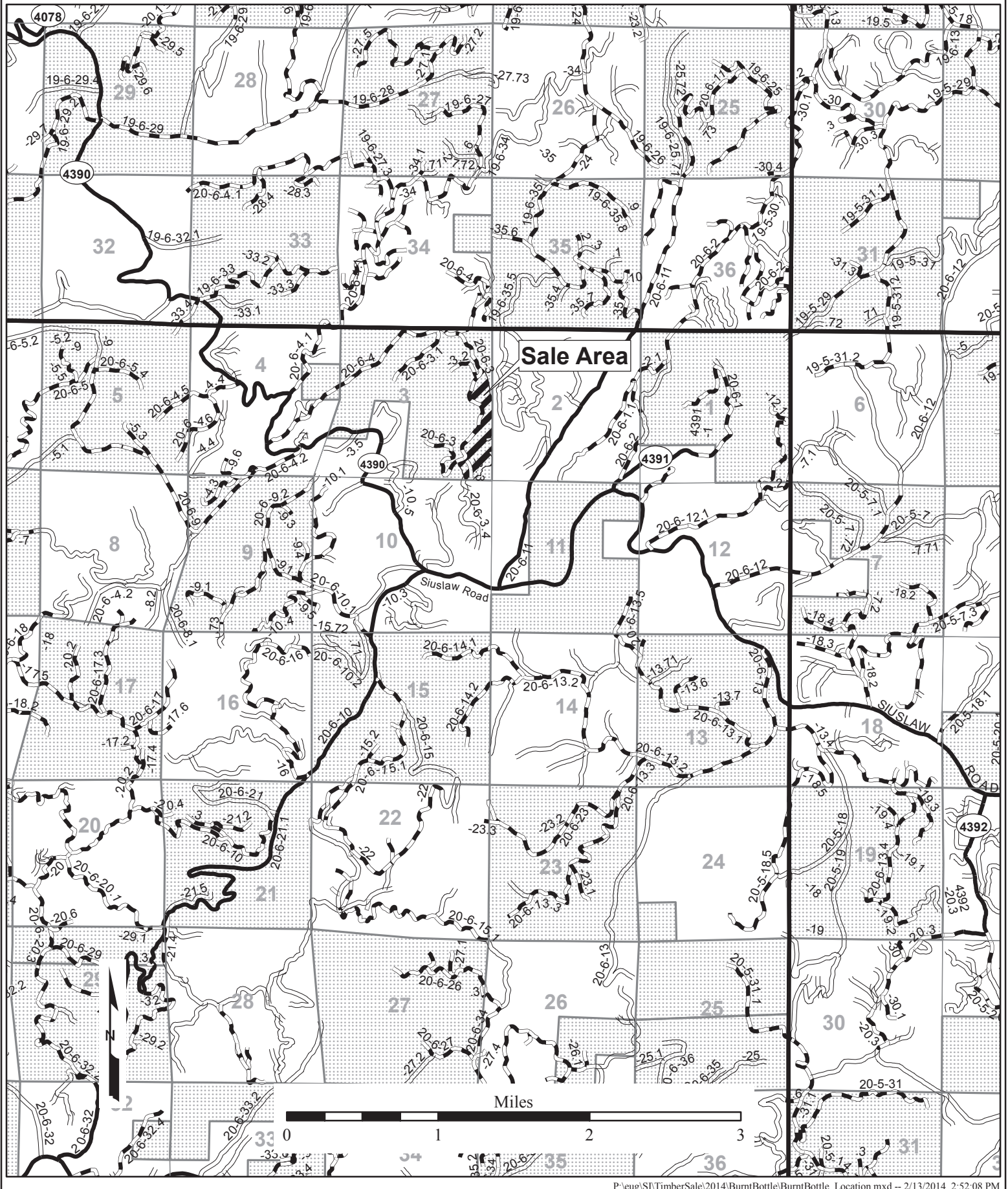
OTHER INFORMATION: This contract contains an updated and revised contract form. Please contact Debra Wilson at 541-683-6798 if you have questions.

NARRATIVE DESCRIPTION OF HOW TO GET TO THE TIMBER SALE AREA: Prospective bidders may proceed to the sale area from Veneta, head south on Territorial Highway approximately 18.4 miles. Turn west on County Road 4390 (Siuslaw Rd.) and travel approximately 12.5 miles and turn northeast on Road No. 20-6-4. Travel 1.64 miles to Road No. 20-6-3 and turn southeast to enter the sale area. For further information please contact Christopher Finn at (541) 683-6421.

Timber Sale Location Map

Burnt Bottle Timber Sale

T. 20 S., R. 6 W., Sec. 3



Seasonal Restriction Matrix

Restricted Periods are Shaded and X'd; 2-hour daily timing restrictions are X'd only.

	Jan		Feb		Mar		Apr		May		June		July		Aug		Sept		Oct		Nov		Dec	
	1	15	1	15	1	15	1	15	1	15	1	15	1	15	1	15	1	15	1	15	1	15	1	15
All operations except hauling																								
<u>Special Operating Area</u> ▪ April 1 – August 5, both days inclusive: with the exception of haul, operations shall not occur ▪ August 6 – September 15, both days inclusive: operations shall not begin until 2 hours after sunrise and shall cease 2 hours prior to sunset																								
Felling, yarding or loading																								
<u>Partial Harvest Area</u> ▪ April 15 – June 15, both days inclusive ▪ Sap flow seasonal restriction may be conditionally waived																								
Ground-based yarding																								
<u>Partial Harvest Area</u> ▪ Typically October 1 – June 30; may vary due to weather conditions																								
Right-of-way logging and clearing																								
<u>Right-of-Way Area</u> ▪ Typically October 1 – May 31; may vary due to weather conditions ▪ April 1 – September 15, both days inclusive: operations shall not begin until 2 hours after sunrise and shall cease 2 hours prior to sunset on Road No. 20-6-3																								
Hauling on natural-surfaced roads																								
<u>Contract Area</u> ▪ Typically October 15 – May 31; may vary due to weather conditions																								

NOTE: This chart is for informational purposes only. Refer to Section 42 Special Provisions of the timber sale contract for exact date restrictions and stipulations.

**UNITED STATES
DEPARTMENT OF THE INTERIOR**

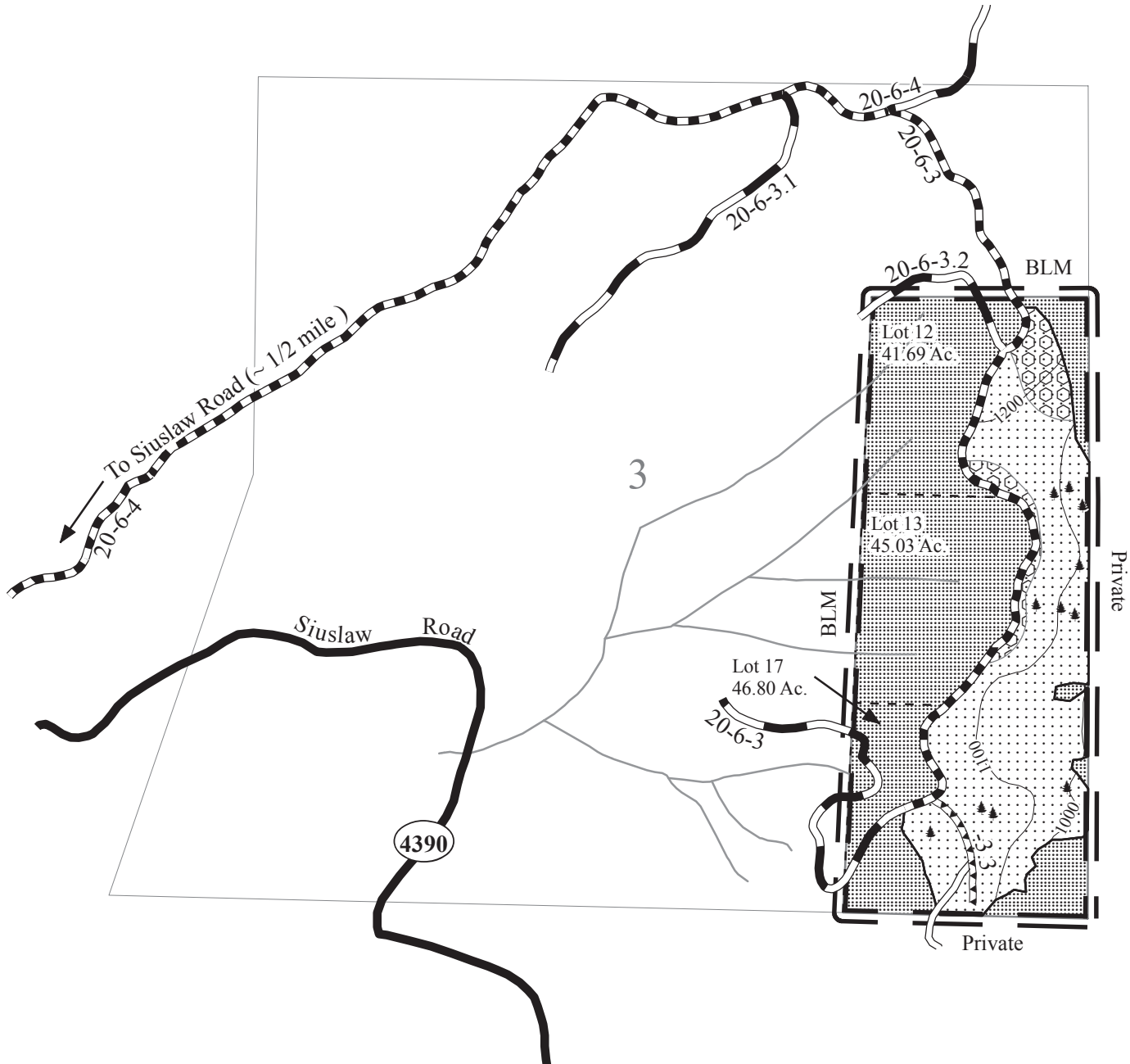
Bureau of Land Management

Burnt Bottle Timber Sale Contract No: ORE05-TS14-517

T. 20 S., R. 6 W., Sec. 3, Will. Mer., Eugene District

Exhibit A

Sheet 1 of 1



- | | | | |
|--|--|--|----------------------|
| | Boundary - Contract Area | | Road - Paved Surface |
| | Partial Harvest Area | | Road - Rock Surface |
| | Reserve Area | | Road - Other Surface |
| | Special Operating Area (MAMU) | | Road - Renovation |
| | Approximate Location of Special Habitat Trees (11) | | Road - Improvement |
| | Stream | | |

Total Partial Harvest Area	55.00
Total Clearcut (R/W) Area	0.00
Total Reserve Area	78.52
Total Contract Area	133.52 Ac.

EUGENE DISTRICT
SIUSLAW RESOURCE AREA

PARCEL NO.: 2
SALE DATE: March 27, 2014

Tract No. E-14-521 Just Deed It
Lane County, Oregon: O&C

Bid Deposit Required: \$558,400.00

All timber designated for cutting on Lots 7, 8, SE1/4 SW1/4, Section 11, Lots 1-5, NE1/4, NE1/4 NW1/4, S1/2 NW1/4, N1/2 SW1/4, SW1/4 SW1/4, Section 15, W1/2 NW1/4, Section 23, T. 17 S., R. 7 W., Will. Mer.;

Estimated Volume 32' Log (MBF)	Species	Estimated Volume 16' Log (MBF)	Appraised Price Per MBF	Estimated Volume Times Approx. Price
6,889	Douglas-fir	7,949	\$ 329.00	\$ 2,615,221.00
649	Western hemlock	736	\$ 238.00	175,168.00
2	Bigleaf maple	2	\$ 85.00	170.00
3	Red alder	5	\$ 127.00	635.00
1	Port-Orford-cedar	1	\$ 375.00	375.00
7,544	TOTALS	8,693		\$ 2,791,569.00

APPRAISED PRICES are calculated by determining market value through the analytical appraisal method. The minimum bid increment will be \$0.10 per MBF or multiples thereof.

LOG EXPORT RESTRICTIONS: All timber offered for sale hereunder is restricted from export from the United States in the form of unprocessed timber and is prohibited from being used as a substitute for exported private timber.

NOTE: The volume for this timber sale has been calculated using 16 foot eastside Scribner rules, and the 32 foot log volumes are estimates derived from the 16 foot volumes.

CRUISE INFORMATION: Volume in the Partial Harvest Areas was derived from a variable plot cruise method. The Partial Harvest Areas contain a total of 233 plots and 151 randomly selected sample trees. The tree count was determined with a Relaskop using a 20 BAF. Sample trees were randomly selected and volume expanded to a total Partial Harvest Volume in 16-foot lengths using the **National Cruise Processing Program**. A map showing the location of the sample trees is available at the Eugene District Office. Volume in the Right-of-Ways has been cruised using the 3P system to select sample trees. The sample trees have been cruised and the volume computed using the **National Cruise Processing Program** for estimating volume in 16-foot lengths. Volume from both methods was then expanded to a total sale volume.

With respect to merchantable Douglas-fir (sample) trees: The average tree is 14.4" DBHOB; the average log contains 58 bd. ft.; the total gross merchantable volume is approximately 8,319 MBF; and 96% recovery is expected.

CUTTING AREA: Three areas totaling approximately 298 acres must be partial harvested and approximately 9 acres of right-of-way must be clear cut.

ACCESS: Access to the sale is provided by:

1. A public road;
2. BLM existing roads;
3. Roads covered by a Right-of-Way and Road Use Agreement E-310 between Oxbow Timber I, LLC and the United States. In the construction and renovation of private roads, the Purchaser shall enter into a license agreement with Oxbow Timber I, LLC. The license agreement shall be delivered to Oxbow Timber I, LLC for execution at least 15 days prior to any use of company roads. See the Prospectus for full terms and conditions of use.
4. Roads covered by a Right-of-Way and Road Use Agreement E-340 between Weyerhaeuser Company and the United States. In the renovation of private roads, the Purchaser shall enter into a license agreement with Weyerhaeuser Company. The license agreement shall be delivered to Weyerhaeuser Company for execution at least 15 days prior to any use of company roads. See the Prospectus for full terms and conditions of use.

ROAD MAINTENANCE: The Purchaser shall pay Oxbow Timber I, LLC road use fees of \$2,170.95. The Purchaser shall pay Weyerhaeuser Company road use fees of \$3,978.00 and rockwear fees estimated at \$2,475.51. The Purchaser shall pay BLM a road maintenance fee of \$12,878.09 and a rockwear fee of \$6,915.79. See Exhibit D map for specification of road maintenance responsibility. Only the map page of Exhibit D is included in the Prospectus. Refer to the contract file for the full Exhibit D.

ROAD CONSTRUCTION: Required

Spurs A-F; Road Nos.: 17-7-15.1 Ext., -15.2, -15.3, -15.4, and -22.7 Ext.

Class: SN-14

Length: 80.67 Stations

Surfacing: 1-1/2" / 3" minus

Width: 12'

Compacted Depth: 8" or 9"

Estimated Quantity: 910 / 2,700 cy (truck measure)

Total estimated construction cost: \$101,614.82

Special Requirements in Road Construction: Operations limited to periods of dry weather, Wildlife restrictions on Spurs D and E and Road Nos. 17-7-13, -15.1 Ext., -15.2 and -15.3

Suggested Commercial Rock Source:

Noti Vicinity

Culverts:

<u>Diameter:</u>	<u>Length:</u>	<u>Number:</u>
18"	30'	1

ROAD RENOVATION: Required

Road Nos: 17-7-13, -14.1, -15.1, -22.1 and -22.7

Class: SN-14

Length: 1.54 Miles

Surfacing: 3" minus

Width: 12'

Compacted Depth: 6"

Estimated Quantity: 270 cy (truck measure)

Total estimated renovation cost: \$11,773.28

Special Requirements in Road Renovation: Operations limited to periods of dry weather. Wildlife restriction on Road Nos. 17-7-13, -15.1, -15.2 and -15.3

Suggested Commercial Rock Source:

Noti Vicinity

Culverts:

<u>Diameter:</u>	<u>Length:</u>	<u>Number:</u>
18"	40'	1

DURATION OF CONTRACT: Duration of the contract will be 36 months for cutting and removal of timber.**SPECIAL PROVISIONS:** The contract will contain special provisions regarding road construction, road renovation, road maintenance, logging methods, prevention of erosion, falling of snags, falling of all trees designated for cutting, logging residue reduction, and submission of a written logging plan specifying spur road locations, landing locations, logging methods, and logging schedule.

Under Sec. 25 of the timber sale contract, tractor logging will be prohibited during periods of excessive soil moisture. This will normally limit tractor logging to July, August and September.

It is estimated that approximately 929 MBF of additional timber, such as corridor and guyline trees, may be removed under the contract, but it is not included in the advertised sale volume, nor is it included in the timber sale appraisal.

OTHER SPECIAL REQUIREMENTS:

- No yarding or hauling shall be conducted on natural surfaced roads during periods of wet weather as determined by the Authorized Officer.
- Yarding shall be done with a carriage equipped skyline capable of yarding 2,400 feet slope distance in the Partial Harvest Areas on slopes greater than 35%.
- In the Special Tailhold/Guyline Areas, approval from the Authorized Officer shall be obtained prior to attaching logging equipment to any tree.
- Approximately 130 trees are marked with yellow paint above and below breast height in the Approximate Location of Special Habitat Trees. These trees shall not be felled or damaged during logging operations.
- With the exception of hauling, daily operations within the Special Operating Area (MAMU) shown on Exhibit A shall not be permitted from April 1 through August 5 of each year, both days inclusive.
- With the exception of hauling, daily operations within the Special Operating Area (MAMU) shown on Exhibit A shall not begin until at least 2 hours after sunrise and shall cease at least 2 hours prior to sunset from August 6 through September 15 of each year, both days inclusive.

- With the exception of hauling, no human presence shall be allowed within the Special Operating Area (Raptor) shown on Exhibit A from March 1 through July 15 of each year, both days inclusive. This restriction may be waived dependent on the results of BLM wildlife surveys.
- The Purchaser shall rock Spurs A and B and Road Nos. 17-7-15.1, 17-7-15.1 Ext., 17-7-15.2, 17-7-15.3 and 17-7-15.4 for wet weather haul.
- The Purchaser shall have the option to rock Road No. 17-7-22.1 at Purchaser's expense.
- Construction of Road No. 17-7-22.7 Ext. requires cutting and decking approximately 4 MBF of private timber (for removal by the Purchaser).
- Renovation of Road No. 17-7-13 requires cutting and decking of approximately 1 MBF of private timber (for removal by the Purchaser).
- Within 25 feet of Road No. 17-7-22 (IP Deeded Road), slash shall be piled and covered within the Partial Harvest Areas.
- During the use of Road No. 17-7-22 (IP Deeded Road), the road shall not be blocked for more than 20 minutes at a time during operating hours and shall be cleared at the end of each day.
- Upon completion of hauling, all decommissioning shall be completed during the dry season and as directed by the Authorized Officer. Decommissioning measures include:
 - Decompact skid trails and natural surfaced roads with decompaction equipment, such as a track mounted excavator.
 - Construct drainage dips, waterbars, and/or lead-off ditches and remove all culverts and cross drains.
 - Place logging slash greater than 6 inches in diameter, where available, on surfaces in a discontinuous pattern.
 - Block at entry points using stumps, slash, cull logs and/or earthen barricades.
- The Exhibit F contains explicit instruction on requirements for equipment and personnel involved in pile burning.

OPTIONAL CONTRIBUTION: The Purchaser will have the option of performing pile burning or contributing \$ 1,102.90 in lieu thereof. The option must be declared prior to contract execution. Piling and covering are not included in the Optional Contribution and will remain the responsibility of the Purchaser.

If the Purchaser has made a contribution and later elects to remove all of the slash required to be piled, covered, and burned, the contribution will be refunded.

OTHER INFORMATION: This contract contains an updated and revised contract form. Please contact Debra Wilson at 541-683-6798 if you have questions.

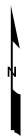
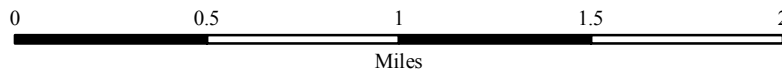
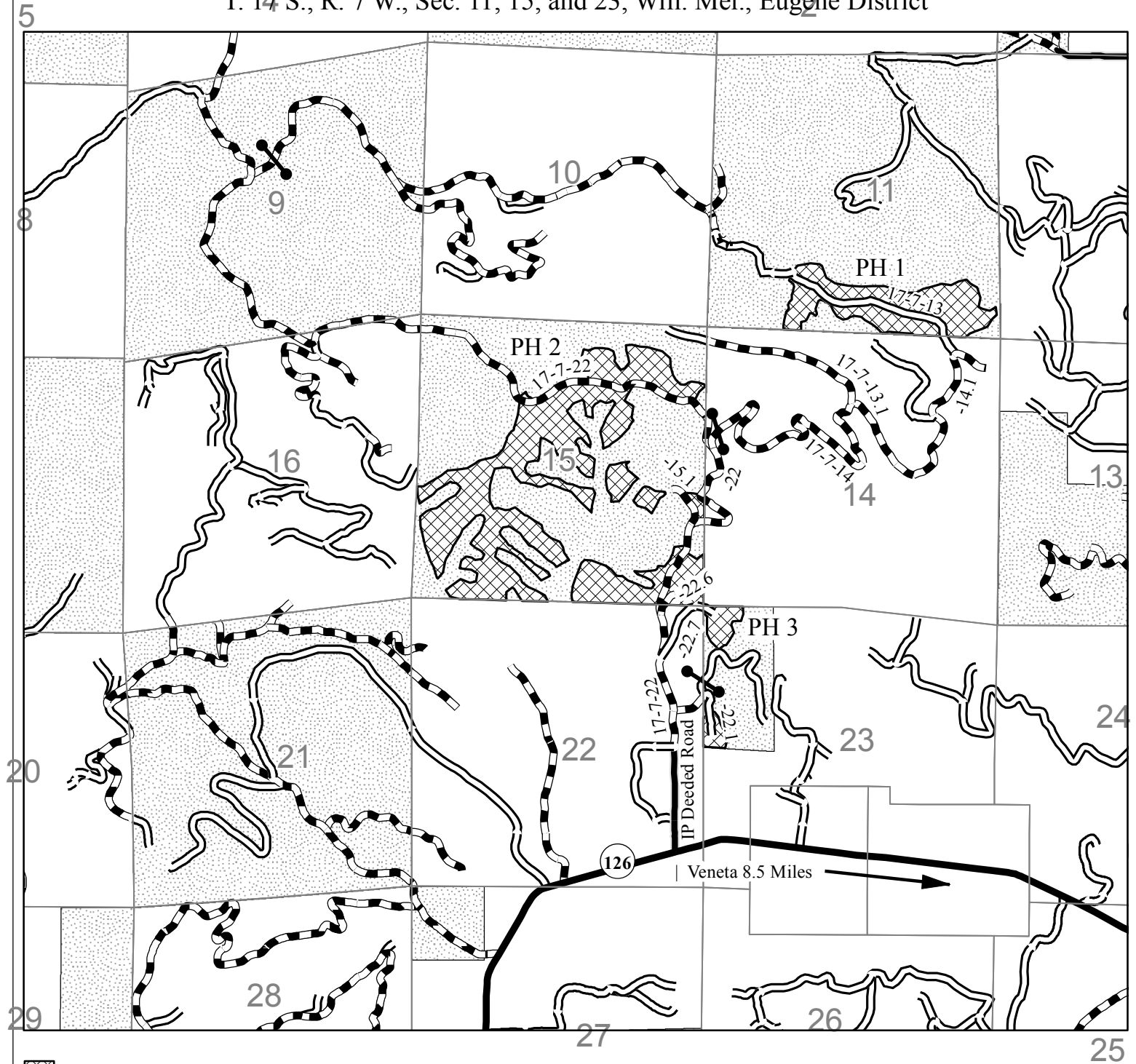
NARRATIVE DESCRIPTION OF HOW TO GET TO THE TIMBER SALE AREA: Access to the sale is through a locked gate over private land. Prospective bidders may obtain a key from the Eugene District Office and proceed to the sale area. Any other persons interested in visiting the timber sale site should first contact Christopher Finn at (541) 683-6421.

From Veneta proceed west on Highway 126 for approximately 8.5 miles. Turn north onto Road No. 17-7-22 (I.P. Deeded Road) and proceed for approximately 1/2 mile. Follow the Timber Sale Area signs to the sale area.

Timber Sale Location Map

Sale Name: Just Deed It

T. 17 S., R. 7 W., Sec. 11, 15, and 23, Will. Mer., Eugene District



No warranty is made by the Bureau of Land Management as to the accuracy, reliability, or completeness of these data for individual or aggregate use with other data. Original data were compiled from various sources. This information may not meet National Map Accuracy Standards. This product was developed through digital means and may be updated without notification.

United States Department of the Interior
Bureau of Land Management
Oregon State Office
P.O. Box 2965
Portland, Oregon 97208-2965
February 18, 2014

W:\work\Just Deed It\LocationMap_Final.mxd - Feb 18, 2014 - 5:00:15 PM

Seasonal Restriction Matrix

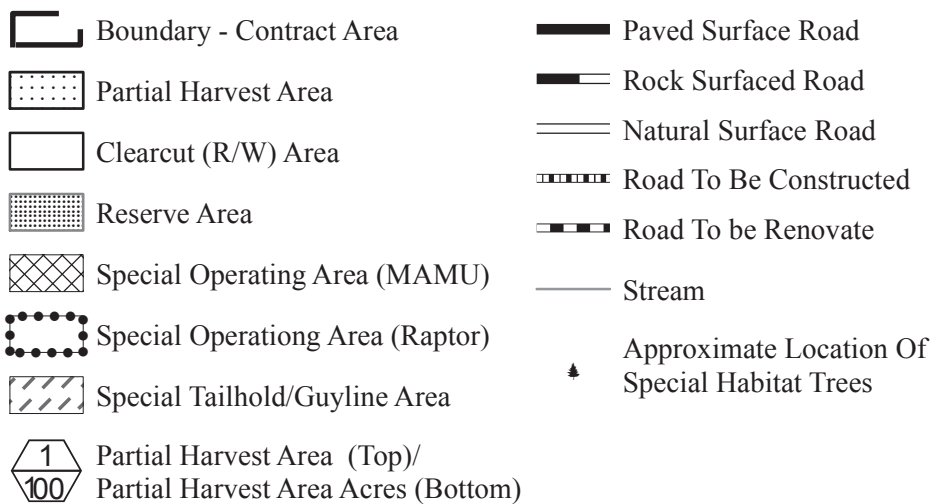
Restricted Periods are Shaded and X'd; 2-hour daily timing restrictions are X'd only.

	Jan		Feb		Mar		Apr		May		June		July		Aug		Sept		Oct		Nov		Dec	
	1	15	1	15	1	15	1	15	1	15	1	15	1	15	1	15	1	15	1	15	1	15	1	15
All operations except hauling																								
<u>Special Operating Area (MAMU)</u> <ul style="list-style-type: none"> April 1 – August 5, both days inclusive: Operations are prohibited. August 6-September 15, both days inclusive: Operations shall not begin until 2 hours after sunrise and shall cease 2 hours prior to sunset. 																								
No human presence except hauling																								
<u>Special Operating Area (Raptor)</u> <ul style="list-style-type: none"> March 1 through July 15, both days inclusive: All human presence is prohibited. Seasonal restriction may be conditionally waived dependent on results of BLM wildlife surveys. 																								
Felling, yarding or loading																								
<u>Partial Harvest Areas</u> <ul style="list-style-type: none"> April 15 – June 15, both days inclusive. Sap flow seasonal restriction may be conditionally waived. 																								
Ground-based yarding																								
<u>Partial Harvest Areas</u> <ul style="list-style-type: none"> Typically October 1 – June 30; may vary due to weather conditions. 																								
Right-of-way logging and clearing																								
<u>Right-of-Way Area</u> <ul style="list-style-type: none"> Typically October 1 – May 31; may vary due to weather conditions. 																								
Hauling on natural-surfaced roads																								
<u>Partial Harvest Areas</u> <ul style="list-style-type: none"> Typically October 15 – May 31; may vary due to weather conditions. 																								

NOTE: This chart is for informational purposes only. Refer to Section 42 Special Provisions of the timber sale contract for exact date restrictions and stipulations.

Just Deed It Timber Sale Contract No: ORE05-TS14-521
T. 17 S., R. 7 W., Sec. 11, Will. Mer. Eugene District

Sheet 1 of 3



Total Partial Harvest Area	298.00
Total Clearcut (R/W) Area	9.00
Total Reserve Area	592.29
Total Contract Area	899.29 A.

Feet

0 500 1,000 1,500

**UNITED STATES
DEPARTMENT OF THE INTERIOR**

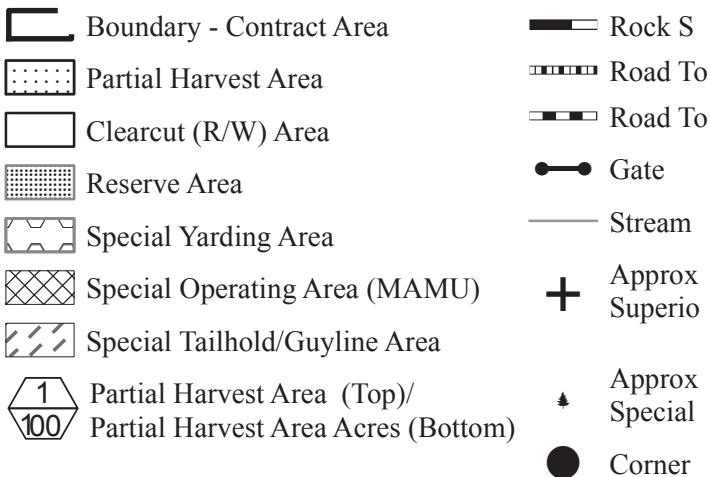
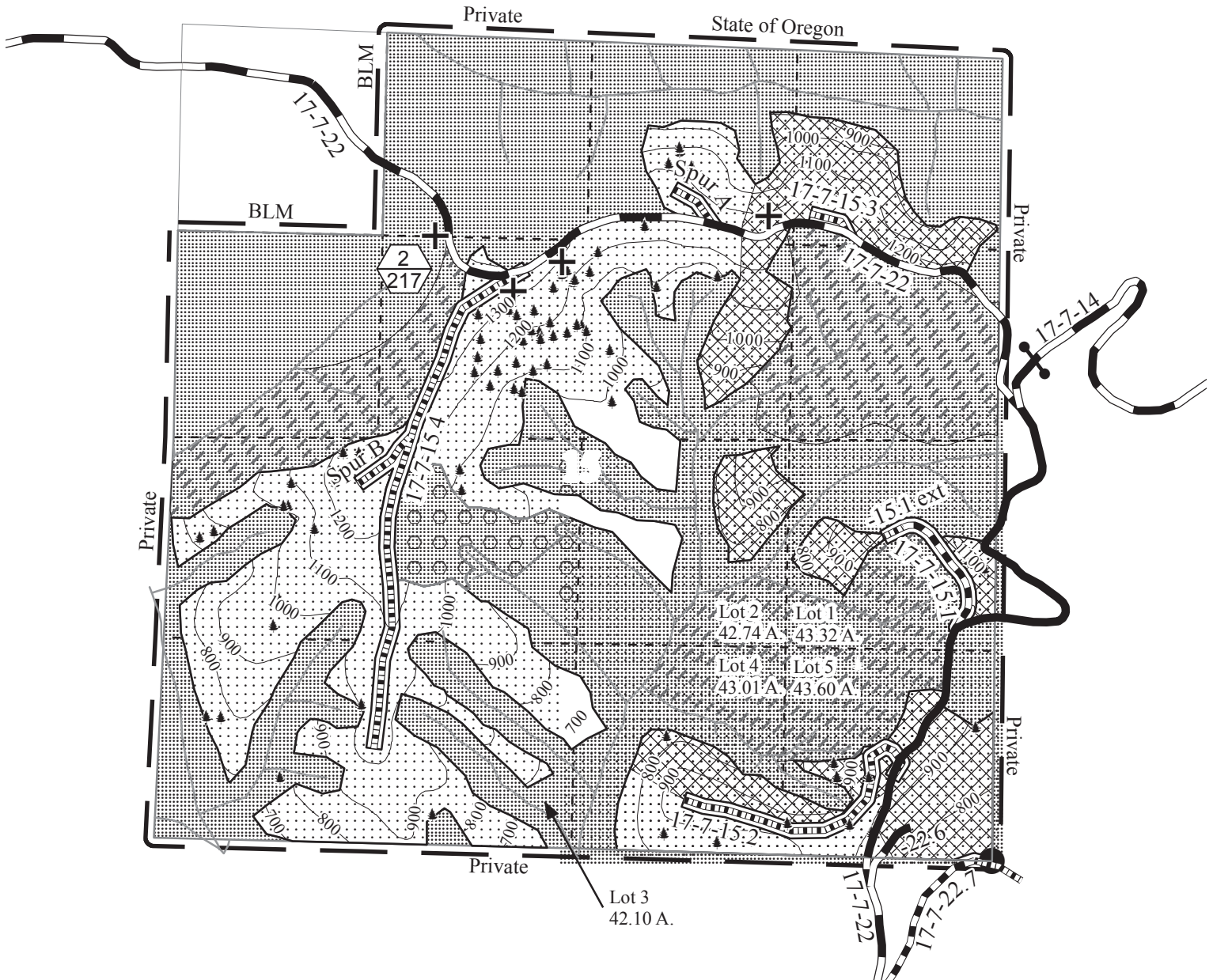
Bureau of Land Management

Just Deed It Timber Sale Contract No: OR090-TS14-521

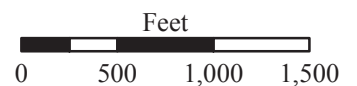
T. 17 S., R. 7 W., Sec. 15, Will. Mer. Eugene District

Exhibit A

Sheet 2 of 3



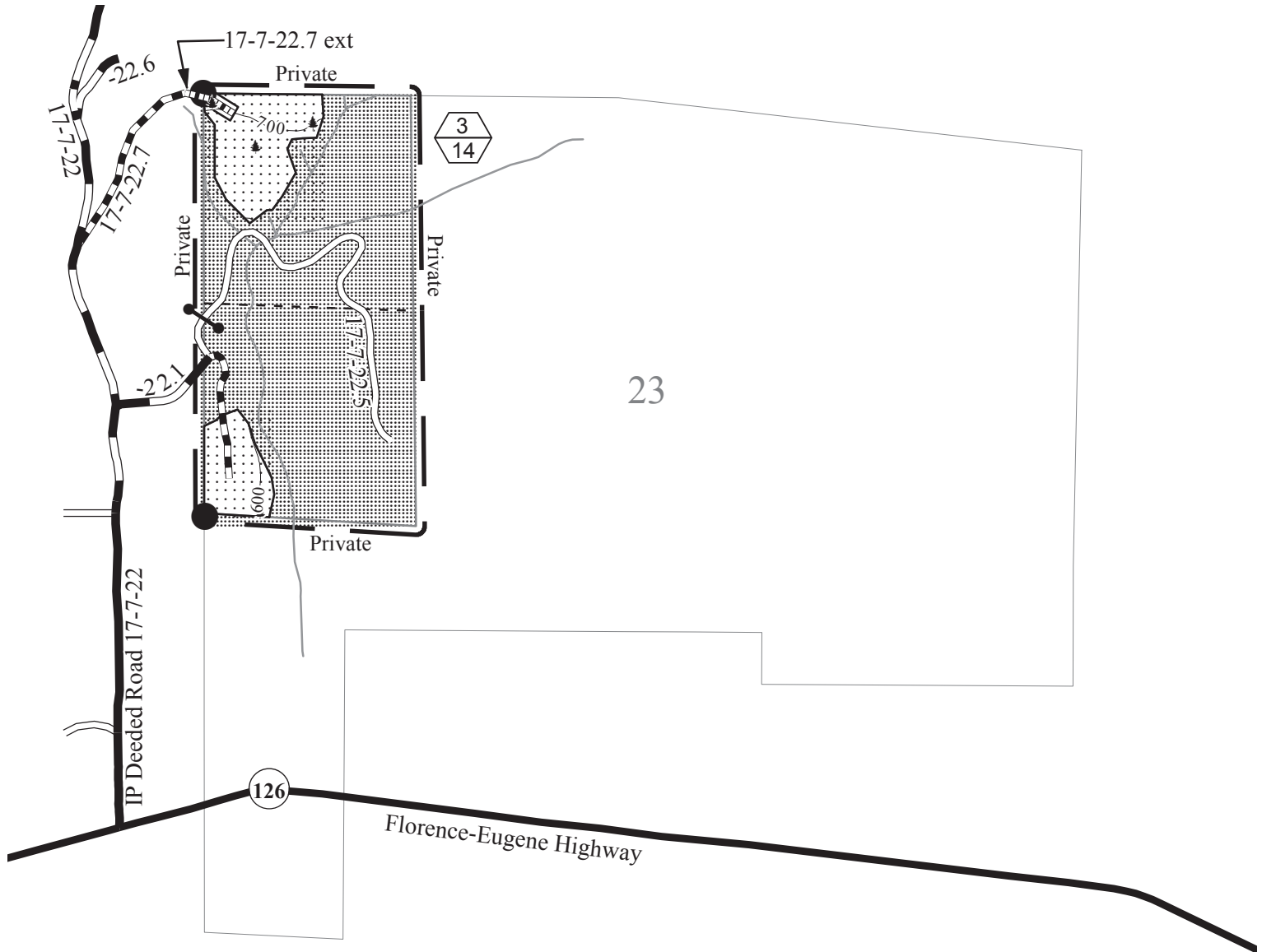
Partial Harvest Area	217.00
Clearcut (R/W) Area	5.00
Reserve Area	392.77
Contract Area	614.77 A.



**UNITED STATES
DEPARTMENT OF THE INTERIOR
Bureau of Land Management**

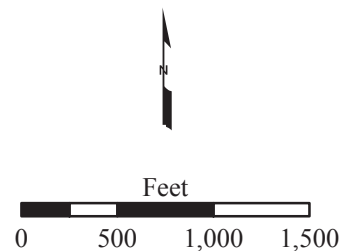
Just Deed It Timber Sale Contract No: ORE05-TS14-521
T. 17 S., R. 7 W., Sec. 23, Will. Mer. Eugene District

Exhibit A
Sheet 3 of 3



- | | | | |
|--|---|--|------------------------|
| | Boundary - Contract Area | | Stream |
| | Partial Harvest Area | | Paved Surface Road |
| | Clearcut (R/W) Area | | Rocked Surface Road |
| | Reserve Area | | Natural Surfaced Road |
| | Approximate Location Of Special Habitat Tree | | Road To Be Constructed |
| | Partial Harvest Area (Top)/ Partial Harvest Area Acres (Bottom) | | Road To Be Renovated |
| | | | Gate |
| | | | Corner Found |

Partial Harvest Area	14.0
Clearcut (R/W) Area	1.0
Reserve Area	65.0
Contract Area	80.0 A.



EUGENE DISTRICT
UPPER WILLAMETTE RESOURCE AREA

PARCEL NO.: 3
SALE DATE: March 27, 2014

Tract No. E-14-672 McGowan Too
Lane County, Oregon: O&C

Bid Deposit Required: \$38,500.00

All timber designated for cutting on N1/2NE1/4, SW1/4NE1/4, NW1/4, NE1/4SW1/4, NW1/4SE1/4,
Section 17, T. 16 S., R. 2 W., Lots 1 and 2, W1/2,
Section 33, T. 16 S., R. 2 W., Will. Mer.

Estimated Volume 32' Log (MBF)	Species	Estimated Volume 16' Log (MBF)	Appraised Price Per MBF	Estimated Volume Times Approx. Price
1,990	Douglas-fir	2,264	\$ 144.00	\$ 326,016.00
498	Western hemlock	613	\$ *42.70	26,175.10
230	Grand fir	277	\$ *45.60	12,631.20
28	Incense-cedar	33	\$ 328.00	10,824.00
20	Western redcedar	21	\$ 412.00	8,652.00
2,766	TOTALS	3,208		\$ 384,298.30

*10% of Pond Value

APPRAISED PRICES are calculated by determining market value through the analytical appraisal method. The minimum bid increment will be \$0.10 per MBF or multiples thereof.

LOG EXPORT RESTRICTIONS: All timber offered for sale hereunder is restricted from export from the United States in the form of unprocessed timber and is prohibited from being used as a substitute for exported private timber.

NOTE: The volume for this timber sale has been calculated using 16 foot eastside Scribner rules, and the 32 foot log volumes and the cubic log volumes are estimates derived from the 16 foot volumes.

CRUISE INFORMATION: Volume for Douglas-fir in the right-of-ways has been cruised using the 3P system to select sample trees. The sample trees have been cruised and the volume computed using the **National Cruise Processing Program** for estimating volume in 16 foot lengths and the volume expanded to a total right-of-way volume. A map showing the location and description of these sample trees is available at the Eugene District Office. The timber volumes for all other conifers in the right-of-ways were based on a 100% cruise using the **National Cruise Processing Program** for estimating board foot volume of trees in 16 foot logs.

Volume for all Douglas-fir, western hemlock, grand fir, incense-cedar and western redcedar in the Partial Harvest Areas was variable plot cruised. Plot data is then used to calculate v-bar and basal area per acre using the **National Cruise Processing Program**. The basal area was determined with a Relaskop using a 20 BAF. This sale contains a total of 278 plots. 131 sample trees were randomly selected on these plots to determine v-bar. A map showing the location of the sample trees is available at the Eugene District Office.

See "OTHER SPECIAL REQUIREMENTS" No. 2 for information on cruise adjustment.

With respect to merchantable Douglas-fir (sample) trees: The average tree is 12.0" DBHOB; the average log contains 39 bd. ft.; the total gross merchantable volume is approximately 2,396 MBF; and 94% recovery is expected.

CUTTING AREA: Totalling approximately 249 acres must be partial harvested and approximately 8 acres of right-of-way must be clear cut.

ACCESS: Access to the sale is provided by:

1. A public road;
2. BLM existing roads;
3. BLM roads to be constructed;
4. Roads covered by Right-of-Way and Road Use Agreement E-573 between Weyerhaeuser Company and the United States. In the construction and use of private roads, the Purchaser shall enter into a license agreement with Weyerhaeuser Company. The license agreement shall be delivered to Weyerhaeuser Company for execution at least 15 days prior to any use of company roads. See the Prospectus for full terms and conditions of use.

ROAD MAINTENANCE: The Purchaser shall pay BLM road maintenance fees and rockwear fees estimated at \$9,023.44 to BLM. See the Exhibit D map for specifications of road maintenance responsibility. Only the map page of the Exhibit D is included in the Prospectus. Refer to the contract file for the full Exhibit D.

In addition to the quantities shown below, 300 cubic yards (truck measure) of maintenance rock is required. Road reinforcement (rocking) and additional maintenance that may be required for wet weather haul will be at the Purchaser's expense.

ROAD CONSTRUCTION:

Spurs 8A, 8B, 8B1, 17A, 17A1, 17B, 33A, 33B, 33B1, 33C

Length: 93.75 Stations

Class: SN-14

Special Requirements: Operations limited to periods of dry weather.

ROAD RENOVATION:

Road Nos. 16-2-7.7, -8.1, -8.2, -17, -17.1, -18.1, -28, -33.1, -33.2, -33.3

Length: 300.44 Stations

Class: SN-16

Special Requirements: Culvert replacement/installation on streams shall be done between June 1 and October 31 (both days inclusive). Operations limited to periods of dry weather on native surface roads.

Total Estimated Exhibit C (construction and renovation)

Road Costs: \$243,141.53

Required Rock Source: BLM – McGowan Quarry

Surfacing: 3/4" / 1-1/2" / 3" / 6" minus

Estimated Quantity: 596 / 3,033 / 1,836 / 3,636 cy (truck measure)

Culverts:		
<u>Diameter:</u>	<u>Length:</u>	<u>Number:</u>
18"	356	11
24"	46	1
30"	40	1

ROAD DECOMMISSIONING: Earthen barricade shall be placed at station 3+00 of Spur 17B.

Estimated cost of Decommissioning: \$800.93

DURATION OF CONTRACT: Duration of the contract will be 36 months for cutting and removal of timber.

SPECIAL PROVISIONS: The contract will contain special provisions regarding road construction, road renovation, road maintenance, road decommissioning, logging methods, prevention of erosion, logging residue reduction, submission of a written logging plan specifying landing locations and logging schedule.

Under Sec. 26 of the timber sale contract, groundbased logging will be prohibited during periods of excessive soil moisture. This will normally limit groundbased logging to July, August and September.

It is estimated that 321 MBF additional timber, such as corridor and guyline trees may be removed under the contract, but is not included in the advertised sale volume, nor is it included in the timber sale appraisal.

A revised Special Provision, 42(d)(2)(cc), has been added to the contract which enables the Contracting Officer to allow the Purchaser to remove material from the Contract Area instead of disposing of slash by piling, covering and burning.

OTHER SPECIAL REQUIREMENTS:

- Approximately 65 trees marked with yellow and/or orange paint above and below breast height and an orange "W" in the Approximate Location of Wildlife Trees in Partial Harvest Areas shown on Exhibit A are reserved. All "W" trees felled for safety and operational reasons shall remain on site.**
- In Section 17, timber affected by target shooting bullets has been addressed and accounted for in the final cruise report. Severe areas were sampled and trees with signs of bullet holes were defected as cull logs. Less severe areas were assigned a D&B of 90. A map indicating the severe and less severe areas is included in the cruising maps. An additional 3% risk is added due to the bullet trees.**
- All yellow marked trees within 200 feet of all streams felled for safety and operational reasons shall remain on site.
- In the use of BPA Power Line Right-of-Way shown on Exhibit A, the Purchaser shall comply with the following conditions.

- (aa) Prior to the start of all cutting and yarding operations the Purchaser shall contact and meet with a BPA representative and the Authorized Officer.
 - (bb) Keep passage open to at least one vehicle width on all BPA access roads to allow for maintenance of Power Line as determined by the Authorized Officer.
 - (cc) No log decking, storage of logs or storage and transportation of flammable materials or fueling of vehicles with the BPA Power Line Right-of-Way.
 - (dd) No loading of log trucks shall be allowed within the BPA Power Line Right-of-Way. All equipment including log trucks shall not be loaded to a height greater than 14 feet above the road bed when traveling under the Power Lines.
- 5. The Purchaser shall be required to clean logging, road, and decommissioning equipment to remove dirt and plant debris that may contain noxious weed seeds from the under carriage, tracks and tire treads prior to entry on BLM lands.
 - 6. No felling, yarding, or loading is permitted in or through the Reserve Areas shown on Exhibit A.
 - 7. Hauling operations on native surface roads shall be restricted to dry periods (typically July 1 to September 30).
 - 8. No yarding shall be conducted on the Partial Harvest Areas during sap flow from April 1 to June 15 of each year, both days inclusive, unless otherwise approved by the Authorized Officer.
 - 9. The Purchaser shall provide a map of requested skyline and skid road locations a minimum of seven (7) working days in advance of cutting to obtain approval of the locations from the Authorized Officer.
 - 10. Corridors and skid trails may need to be adjusted to avoid cutting Wildlife Trees where feasible.
 - 11. Purchaser shall pile logging slash at all landings and within 25 feet of the portion of Spurs 8A, 8B, 8B1, 17A, 17A1, 17B, 33A, 33B, and 33B1; Road Nos. 16-2-17, 16-2-17.1, 16-2-18.1, 16-2-28, 16-2-33.1, 16-2-33.2, and 16-2-33.3 in the Partial Harvest Area as directed by the Authorized Officer.

OPTIONAL CONTRIBUTION: The Purchaser will have the option of performing slash pile burning or contributing of One Thousand Three Hundred Fifty dollars and 43/100 dollars (\$1,350.43) in lieu thereof. The option must be declared prior to contract execution. Piling and covering are not included in the Optional Contribution and will remain the responsibility of the Purchaser.

If Purchaser elects to *remove* material instead of performing burning, and any pile burning is needed, there will be no refund of the optional contribution.

OTHER INFORMATION: This contract contains an updated and revised contract form. Please contact Debra Wilson at 541-683-6798 if you have questions.

NARRATIVE DESCRIPTION OF HOW TO GET TO SALE AREA: Portions of the sale are accessed through locked gates over private land. Prospective bidders may obtain a key from the Eugene District Office and proceed to the sale area. Any other persons interested in visiting the timber sale should first contact Brian Bickford at 541-683-6164.

To Partial Harvest Areas: From Springfield, proceed northeast on Marcola Road for approximately 7 miles to the junction of Hill Road. Proceed west on Hill Road for approximately 0.1 miles, then north onto Donna Road for 0.6 miles. Turn west onto McGowan Creek Road (Road No. 16-2-27).

For Partial Harvest Area No. 2, proceed on McGowan Creek Road for approximately 1.4 miles to the junction of Road No. 16-2-28. Proceed on Road No. 16-2-28 and follow Timber Sale Location signs to the Partial Harvest Area.

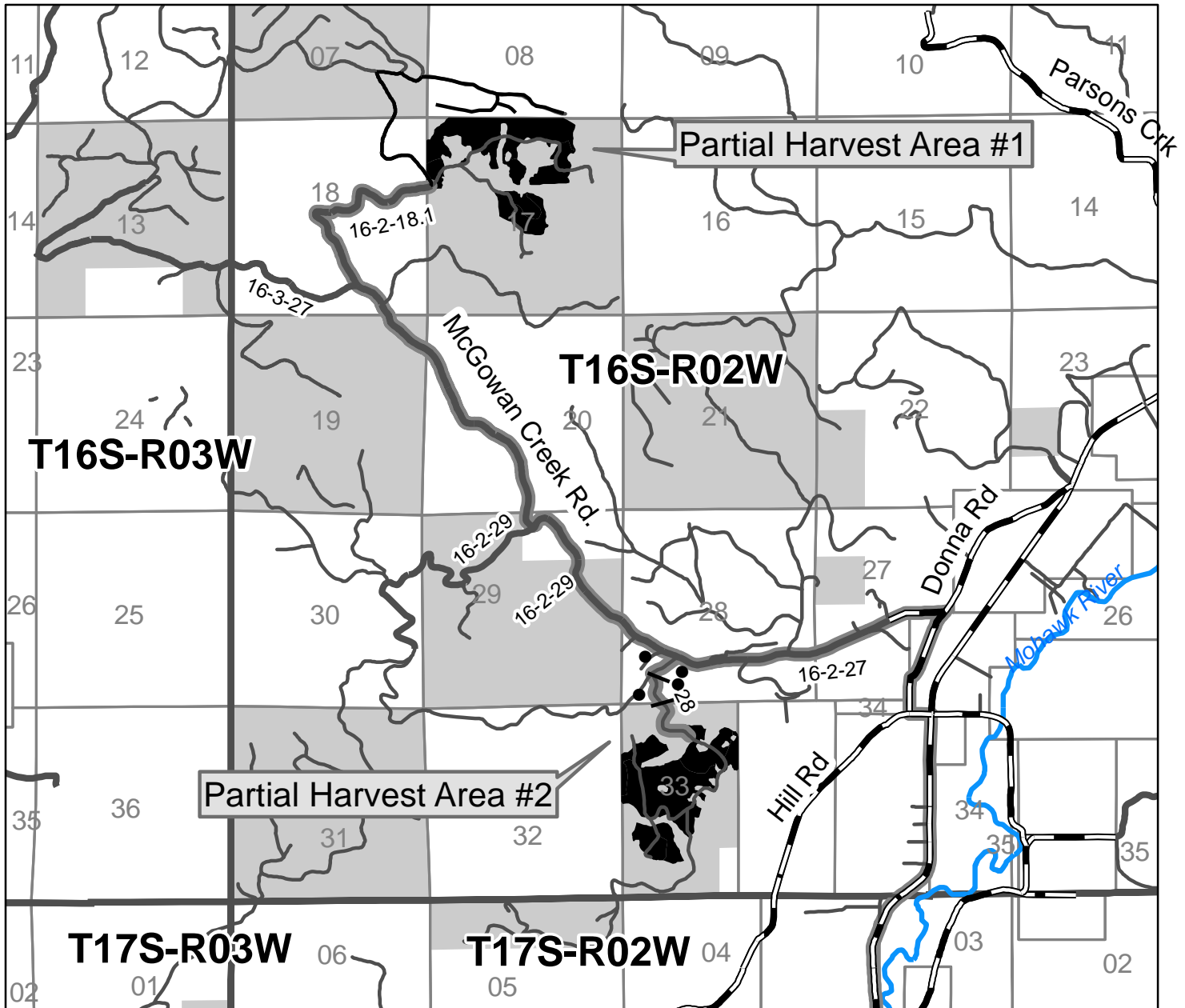
For Partial Harvest Area No. 1, return to McGowan Creek Road and proceed northwest for approximately 2.8 miles to the junction of Road No. 16-2-18.1. Proceed on Road No. 16-2-18.1 for approximately 1.2 miles and follow Timber Sale Location signs to the Partial Harvest Area.



Timber Sale Location Map

Sale Name: McGowan Too

T. 16 S., R. 2 W., Secs. 17 and 23, WILL. MER., EUGENE DISTRICT



— Travel Route ■ Partial Harvest Area ■ Bureau of Land Management • Gate

NARRATIVE DESCRIPTION OF HOW TO GET TO THE TIMBER SALE AREA:

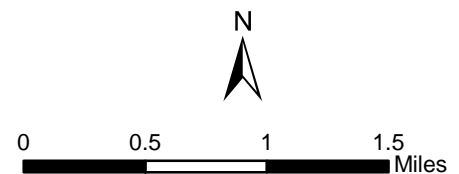
Portions of the sale are accessed through locked gates over private land. Prospective bidders may obtain a key from the Eugene District Office and proceed to the sale area. Any other persons interested in visiting the timber sale should first contact Brian Bickford at 541-683-6164.

To Partial Harvest Areas: From Springfield, proceed northeast on Marcola Road for approximately 7 miles to the junction of Hill Road. Proceed west on Hill Road for approximately 0.1 miles, then north onto Donna Road for 0.6 miles. Turn west onto McGowan Creek Road (Road No. 16-2-27).

For Partial Harvest Area No. 2, continue on McGowan Creek Road for approximately 1.4 miles to the junction of Road No. 16-2-28. Proceed on Road No. 16-2-28 and follow Timber Sale Location signs to the Partial Harvest Area.

For Partial Harvest Area No. 1: Return to McGowan Creek Road and proceed northwest for approximately 2.8 miles to the junction of Road No. 16-2-18.1. Proceed on Road No. 16-2-18.1 for approximately 1.2 miles and follow Timber Sale Location signs to the Partial Harvest Area.

No warranty is made by the Bureau of Land Management as to the accuracy, reliability, or completeness of these data for individual or aggregate use with other data. Original data were compiled from various sources and may be updated without notification.



2/11/2014

United States Department of the Interior
Bureau of Land Management
Oregon State Office
P.O. Box 2965
Portland, Oregon 97208-2965

Seasonal Restriction Matrix

Restricted Times are Shaded and X'd

	Jan		Feb		Mar		Apr		May		June		July		Aug		Sept		Oct		Nov		Dec	
	1	15	1	15	1	15	1	15	1	15	1	15	1	15	1	15	1	15	1	15	1	15	1	15
Road Construction																								
Soil moisture seasonal restriction																								
<ul style="list-style-type: none"> October 1 – June 30th, may vary due to weather conditions; soil moisture still overrides weather conditions. 																								
Yarding (Sap flow)																								
<u>Partial Harvest Areas</u>																								
<ul style="list-style-type: none"> April 1 – June 15, both days inclusive Sap flow restrictions may be conditionally waived at the discretion of BLM 																								
Culvert Installation and Removal																								
<ul style="list-style-type: none"> November 1 through May 31 																								
Wildlife Seasonal Restriction																								
Harvest Activities including Hauling & Road Construction/Decommissioning in PH Area No. 1																								
<ul style="list-style-type: none"> March 1 – July 15 of each year, both days inclusive 																								
Wildlife Seasonal Restriction																								
Quarry Blasting and Crushing																								
<ul style="list-style-type: none"> March 1 – July 15 of each year, both days inclusive 																								
Use of native-surface roads																								
Soil moisture seasonal restriction																								
<ul style="list-style-type: none"> Typically September 30 through July 1 																								
Ground based yarding and decommissioning																								
<u>Partial Harvest Areas</u>																								
<ul style="list-style-type: none"> October 1 – June 30, may vary due to weather conditions; soil moisture still overrides weather conditions. 																								

NOTE: This chart is for informational purposes only. Refer to Section 42 Special Provisions of the timber sale contract for exact date restrictions and specifications. Subject to transient winter snow, elevation ranges from 1000 – 2500 feet.

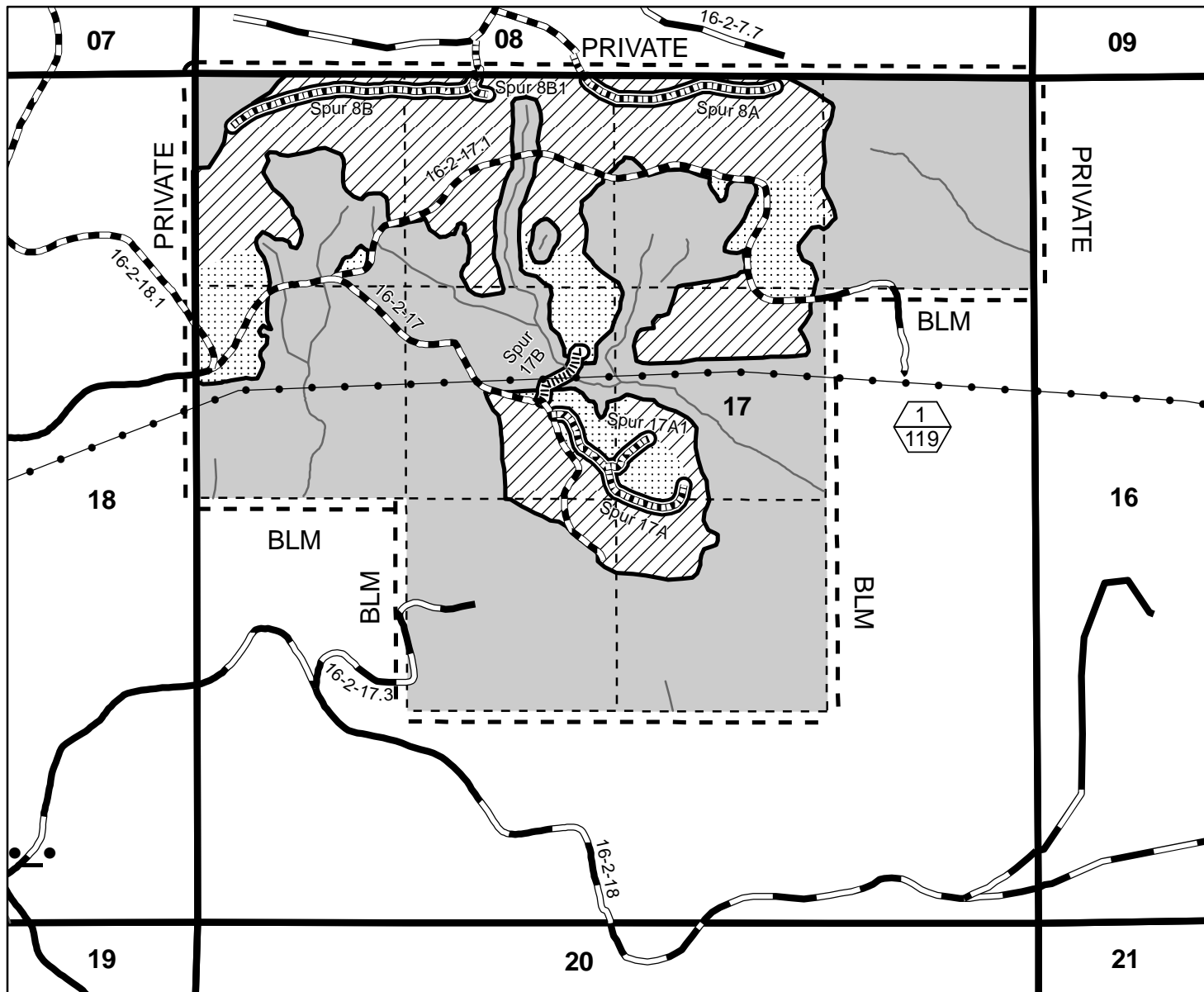


UNITED STATES
DEPARTMENT OF THE INTERIOR
BUREAU OF LAND MANAGEMENT

EXHIBIT "A"

Sheet 1 of 2

SALE NAME: MCGOWAN TOO TIMBER SALE CONTRACT NO.: ORE06-TS14-672
T. 16 S., R. 2 W., SEC. 17, WILL. MER., EUGENE DISTRICT



- | | |
|---|-----------------------------------|
| Partial Harvest Area - Groundbased | New Construction - Native Surface |
| Partial Harvest Area - Cable | Existing Road |
| Partial Harvest Area - Posted, Painted | Existing Road - Paved |
| Reserve Area | Road Renovation |
| Section | Subdivisional Line |
| Contract Area | Stream |
| Unit Number (Top)/
Unit Acres (Bottom) | BPA Power Line ROW |
| New Construction - Rock Surface | Gate |
| | Right-of-Way (Clear Cut) |

0 500 1,000 1,500 Feet

2/11/2014

TOTAL FOR SECTION 17	
PARTIAL HARVEST AREA	119
RIGHT-OF-WAY (CLEARCUT)	4
RESERVE AREA	237
CONTRACT AREA	360 Acres

GRAND TOTALS FOR SECTIONS 17 & 33	
PARTIAL HARVEST AREA	249
RIGHT-OF-WAY (CLEARCUT)	8
RESERVE AREA	454.32
CONTRACT AREA	711.32 Acres

No warranty is made by the Bureau of Land Management as to the accuracy, reliability, or completeness of these data for individual or aggregate use with other data. Original data were compiled from various sources. This information may not meet National Map Accuracy Standards. This product was developed through digital means and may be updated without notification.

United States Department of the Interior
Bureau of Land Management
Oregon State Office
P.O. Box 2965
Portland, Oregon 97208-2965

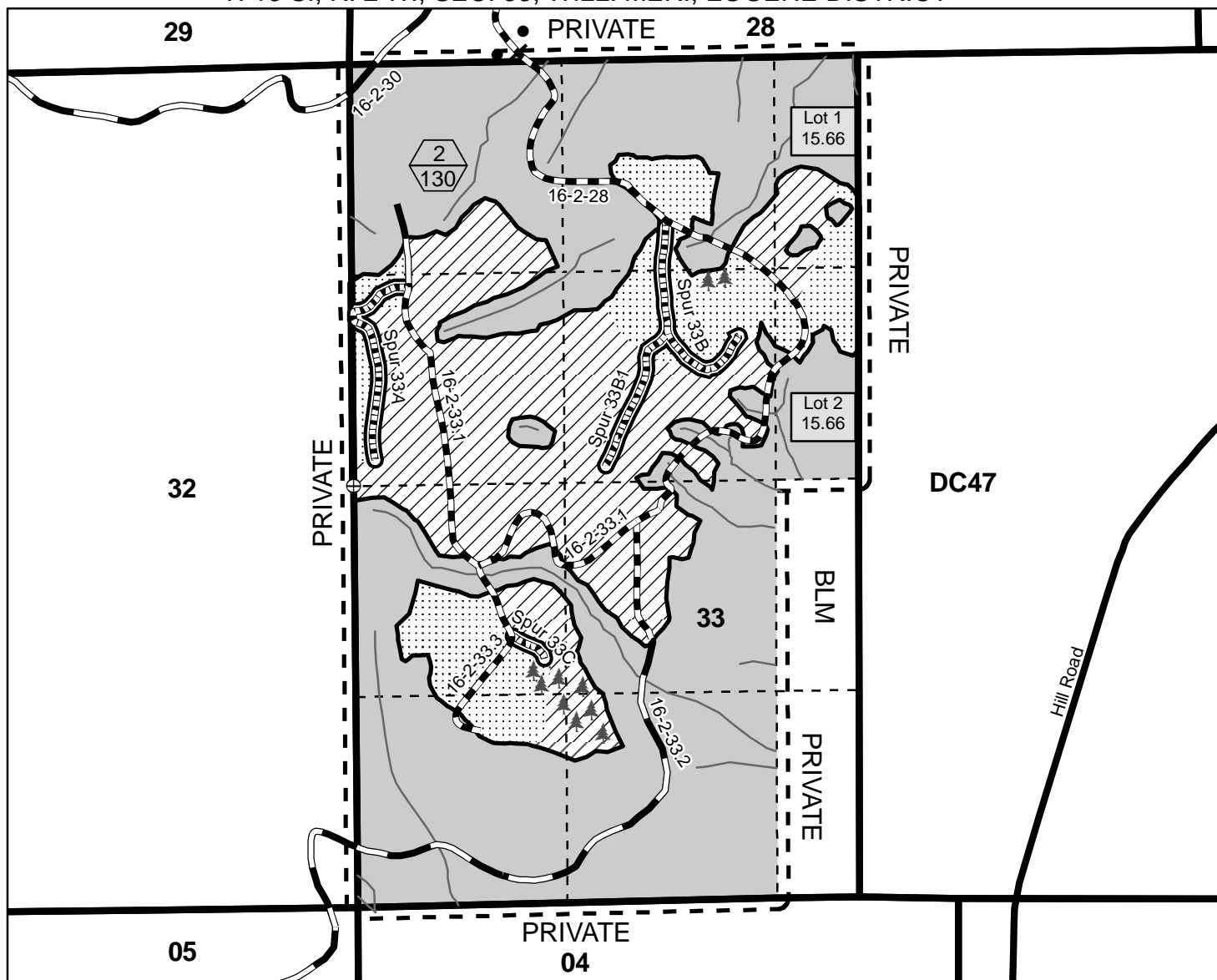


UNITED STATES
DEPARTMENT OF THE INTERIOR
BUREAU OF LAND MANAGEMENT

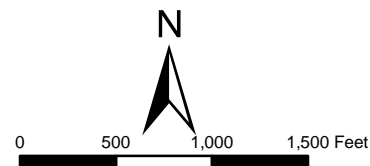
EXHIBIT "A"

Sheet 2 of 2

SALE NAME: MCGOWAN TOO TIMBER SALE CONTRACT NO.: ORE06-TS14-672
T. 16 S., R. 2 W., SEC. 33, WILL. MER., EUGENE DISTRICT



- Partial Harvest Area - Groundbased
Partial Harvest Area - Cable
Partial Harvest Area - Posted, Painted
Reserve Area
Section
Contract Area
New Construction - Rock Surface
Existing Road
Existing Road - Paved
Road Renovation
Subdivisional Line
Stream
Unit Number (Top)/Unit Acres (Bottom)
Gate
Right-of-Way (Clear Cut)
Corner Found
Wildlife Tree Area



2/11/2014

TOTAL FOR SECTION 17	
PARTIAL HARVEST AREA	130
RIGHT-OF-WAY (CLEARCUT)	4
RESERVE AREA	217.32
CONTRACT AREA	351.32 Acres

No warranty is made by the Bureau of Land Management as to the accuracy, reliability, or completeness of these data for individual or aggregate use with other data. Original data were compiled from various sources. This information may not meet National Map Accuracy Standards. This product was developed through digital means and may be updated without notification.

United States Department of the Interior
Bureau of Land Management
Oregon State Office
P.O. Box 2965
Portland, Oregon 97208-2965