

**Conceptual Recreation Access Management
Whitmore Tubs and the Lek 1, Lek 5 and Lek 8 Vicinities**

**Informational Packet
24 August 2005**



**Bureau of Land Management
Bishop Field Office
351 Pacu Lane, Suite 100
Bishop, CA 93514
(760)872-5000**



U.S. Department of the Interior
Bureau of Land Management
News Release

For Release: August 15, 2005

CCal-05-75

Contact: Steve Nelson (760) 872-5006 or Jim Jennings (760) 872-5027

BLM plans to improve resource conditions in Long Valley

The Bureau of Land Management (BLM), Bishop Field Office, is planning to improve resource conditions to benefit both recreation opportunities and important wildlife habitats in Long Valley, Mono County, California. The proposed project area is limited to the immediate vicinity of three traditional sage grouse strutting grounds (leks) and associated habitats located on public lands north of the Benton Crossing Road. Traditional recreational hot tubs known locally as the “Rock Tub”, the “Shepherd’s Tub” and the “Crab Cooker” are also located in the project area.

The objectives of the proposed project are: (1) to maintain and improve recreational access to traditional hot tubs and dispersed camping sites, (2) to restore wet meadow, alkali meadow and sagebrush habitats in close proximity to three, traditional, sage grouse strutting grounds (leks), and (3) to reduce human disturbance in critical sage grouse habitats during the breeding season. A variety of access management and habitat restoration techniques are proposed to meet these objectives.

The public is invited to attend an informational meeting and workshop regarding the proposed project on Wednesday, August 24th, 2005 at 6:30 p.m. at the Crowley Lake Community Center, 458 Pearson Road, Crowley Lake. Additional information requests or comments on the proposed project can also be addressed to Steve Nelson, Resource Information Specialist, BLM – Bishop Field Office, 351 Pacu Lane, Suite 100, Bishop, CA 93514 or by phone 760-872-5006.

The BLM will be taking public comments regarding the proposed project through September 12, 2005.

-BLM-

Bishop Field Office – 351 Pacu Lane Suite 100, - Bishop, CA 93514

General Project Implementation Techniques

Primary Access Routes and Parking Area Improvements

Grade, fill and/or harden the primary hot tub access routes and parking areas to improve drainage characteristics and provide improved vehicle access.

Use culverts, 'French' drains or other drainage management techniques on the primary hot tub access routes and parking areas to improve drainage characteristics and provide improved vehicle access.

Define the primary hot tub access routes and identified parking areas and dispersed campsites with simple barriers to maintain the existing footprints and discourage the proliferation of new routes.

Redundant, Parallel or Dead-end Route Rehab

Camouflage redundant routes, rip and/or vertical mulch visible segments of rehabbed routes.

Install gates at seasonal closures and/or USGS only access routes.

Alkali/Wet Meadow Restoration

Rip closed routes to rehab, aerate and loosen compacted soils.

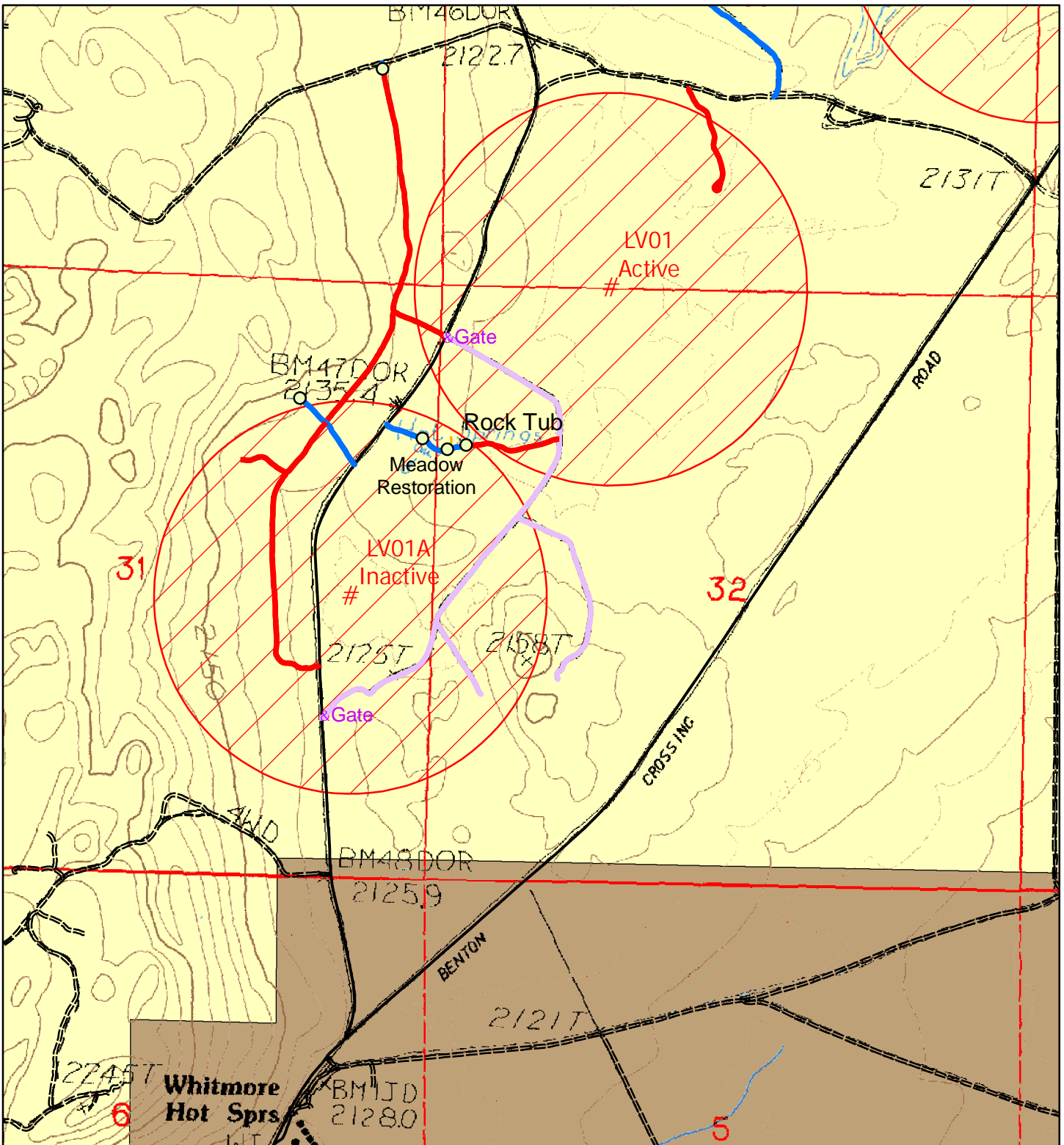
Use simple barriers along open access routes adjacent to alkali/wet meadow habitats to discourage unauthorized vehicle access.

Reestablish vegetative cover on damaged meadow sites via transplant of alkali sod plugs and/or planting of alkali meadow grasses.

Direct hot tub outflows into adjacent alkali/wet meadow habitats.

Remove and/or treat rabbitbrush invading alkali/wet meadow habitats.

Conceptual Access Management Rock Tub and the Lek 1/Lek 1A Complex



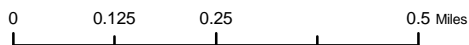
For Planning Use Only. This Map is Not a Legal Land Status Record.

Land Ownership

- BLM
- LA DWP

Sage Grouse Leks

- # Sage Grouse Leks
- RMP 1/3 Mile Lek Protection Zone



1:15,000

US Department of the Interior
Bureau of Land Management
Bishop Field Office
August 2005

Conceptual Access Management

- Improve or Retain Access
- Seasonal Closure
- Close and Rehab
- & Gate
- Primitive Camp/Parking Area

Rock Tub and the Lek 1/Lek 1A Complex

Improve the primary access route (0.16 miles) from the Whitmore Road into the Rock Tub and the adjacent parking area and undeveloped campsites.

Improve the parking area and retain the undeveloped campsites in the immediate vicinity of the Rock Tub.

Close and rehab the redundant access route (0.15 miles) into the Rock Tub via the loop route east of Whitmore Road in the southwest portion of the Lek 1 vicinity.

Seasonally close (3/1-6/30) the loop route (0.93 miles) and 2 dead-end extensions (0.50 miles) east of Whitmore Road and the Rock Tub in the southwest portion of the Lek 1 vicinity and the eastern portion of the Lek 1A vicinity.

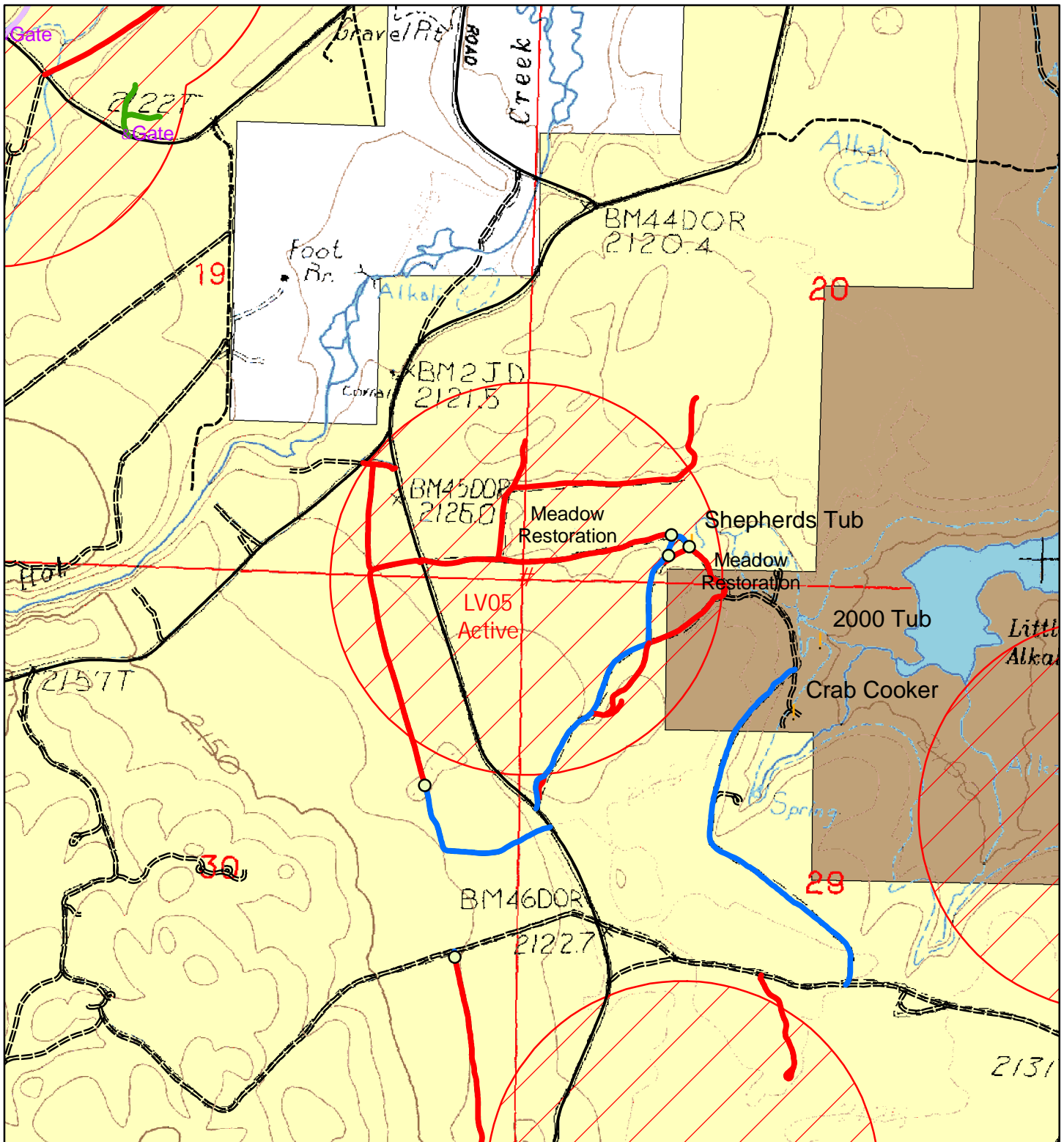
Retain the access route (0.15 miles) from the Whitmore Road into the undeveloped campsite 0.25 miles west of the Rock Tub.

Close and rehab the redundant route (1.15 miles), cutoff (0.09 miles), and dead-end extension (0.08 miles) immediately west and parallel to the Whitmore Road and the western portion of the Lek 1/Lek1A Complex. Provide an undeveloped campsite/parking area at the intersection of this closure and the route traversing the northern end of Doe Ridge.

Close and rehab the dead-end route (0.18 miles) being pioneered into the northern portion of the Lek 1 vicinity.

Restore the alkali/wet meadow habitat immediately south and west of the Rock Tub in the northern portion of the Lek 1A vicinity.

Conceptual Access Management Shepherd's Tub, Crab Cooker and the Lek 5 Vicinity



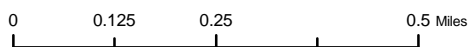
For Planning Use Only. This Map is Not a Legal Land Status Record.

Land Ownership

- BLM
- LA DWP
- Private

Sage Grouse Leks

- # Sage Grouse Leks
- RMP 1/3 Mile Lek Protection Zone



1:15,000

US Department of the Interior
Bureau of Land Management
Bishop Field Office
August 2005

Conceptual Access Management

- Improve or Retain Access
- Seasonal Closure
- Close and Rehab
- USGS Access Only
- & Gate
- Primitive Camp/Parking Area

Shepherd's Tub, Crab Cooker and the Lek5 Vicinity

Improve the primary access route (0.59 miles) from the Whitmore Road into the Shepherd's Tub and the adjacent parking area and undeveloped campsites. Close and rehab the alternate spur routes (0.57 miles) adjacent to this primary access route.

Improve the parking area and retain the undeveloped campsites in the immediate vicinity of the Shepherd's Tub.

Close and rehab the redundant access route (0.43 miles) into the Shepherd's Tub that traverses Lek 5 and the alkali meadow between Whitmore Road and the tub site. Close and rehab the 2 dead-end extensions (0.64 miles) associated with this redundant access route.

Close and rehab the redundant route (0.56 miles) and cutoffs (0.14 miles) immediately west and parallel to the Whitmore Road in the western portion of the Lek 5 vicinity.

Retain an access route (0.30 miles) from the Whitmore Road into the undeveloped campsite 0.20 mile west of the primary access route into the Shepherd's Tub.

Retain the primary access route (0.70 miles) from the Benton Crossing/Whitmore Road Cutoff into the Crab Cooker and the adjacent parking area and undeveloped campsites.

Restore the alkali/wet meadow habitats west and southeast of the Shepherd's Tub in the northern and eastern portions the Lek 5 vicinity.

Little Hot Creek and the Lek 8/Lek 8A Complex

Seasonally close (3/1-6/30) the access route (1.21 miles) into the Little Hot Creek vicinity that traverses the western portion of the Lek 8 alkali meadow. Alternate access into the Little Hot Creek vicinity is available via the Little Antelope Road to the west and via the Owens River Road to the north.

Close and rehab the dead-end route (0.16 miles) onto the low ridge in the northwest portion of the Lek 8 vicinity.

Close and rehab the dead-end route (0.24 miles) being pioneered into the southeast portion of the Lek 8 vicinity.

Restrict public entry on the dead-end access routes (0.16 miles) into USGS seismic monitoring equipment in the southwest portion of the Lek 8/Lek 8A complex.