



Bureau of Land Management  
Alaska State Office  
Division of Cadastral Survey

# Survey Examination And Distribution Handbook

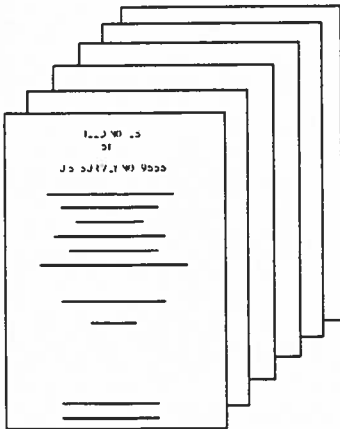
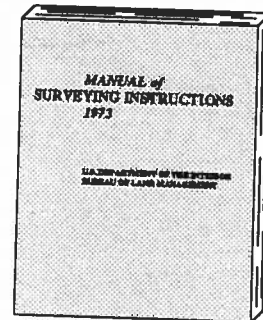
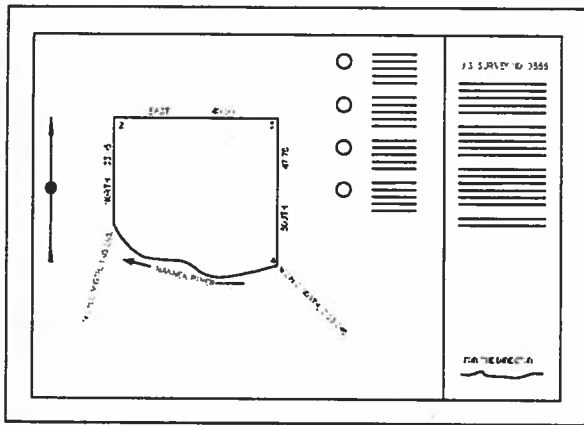


TABLE OF CONTENTS

	<u>Page</u>
<u>Chapter I</u> <u>FIELD RETURN REQUIREMENTS</u> -----	I-1
<u>Chapter II</u> <u>OFFICE REVIEW AND EXAMINATION</u> -----	II-1
A.   Administrative Functions-----	II-1
B.   Preliminary Review-----	II-1
C.   Critical Review-----	II-2
D.   Final Review-----	II-6
<u>Chapter III</u> <u>SUPPLEMENTAL PLATS</u> -----	III-1
A.   General-----	III-1
B.   Authority-----	III-1
C.   Review-----	III-2
<u>Chapter IV</u> <u>AMENDED PLATS</u> -----	IV-1
A.   General-----	IV-1
B.   Authority-----	IV-1
C.   Review-----	IV-2
<u>Chapter V</u> <u>ANNOTATED PLATS</u> -----	V-1
<u>Chapter VI</u> <u>RECORDS DISTRIBUTION PROCESS</u> -----	VI-1
A.   Official Surveys-----	VI-1
B.   14(c) Procedure-----	VI-3
<u>Chapter VII</u> <u>SUSPENSION AND CANCELLATION OF SURVEYS</u> -----	VII-1
A.   Suspension of Surveys-----	VII-1
B.   Cancellation of Group Surveys-----	VII-2
C.   Cancellation of U.S. Surveys-----	VII-3
<u>Chapter VIII</u> <u>NON-MINERAL COST SURVEYS-7130 ACCOUNTS</u> -----	VIII-1
A.   Process-----	VIII-1
<u>Chapter IX</u> <u>LIBRARY</u> -----	IX-1
A.   Function-----	IX-1
B.   Manual Updating and Maintenance-----	IX-2
<u>Chapter X</u> <u>PLAT MEMORANDUMS</u> -----	X-1
A.   General-----	X-1
B.   "Plat Only" U.S. Surveys-----	X-1
C.   U.S. Surveys with Field Notes-----	X-1
D.   Rectangular Surveys-----	X-2
E.   Other-----	X-2
F.   Certificates of Approval-----	X-2

APPENDIX

## Chapter I

CHAPTER I. FIELD RETURN REQUIREMENTS

- A. Requirements for survey returns submitted to the Branch of Examination and Records (922) by the Branch of Field Surveys (921) and survey contractors:
1. Field returns checklist. See Appendix pages 1 to 6.
  2. Field tablets-properly indexed and labeled.
  3. True line plats or automated plotted plats and disk of same, when applicable.
  4. Random line plat(s), if produced by field surveyor.
  5. Calculations and computation sheets used in survey will be labeled and organized for ease of review. All calculations including double checking of corner moves, closures, solars, etc., are the responsibility of the field surveyor. The Examination Section will only spot check this data if there appears to be a problem.
  6. Master Title Plats and Historical Indexes (if given to surveyor in initial package).
  7. Record Plats and Field Notes.
  8. Private survey plats, monumentation records, related deeds and all other supporting documentation.
  9. Quadrangle Maps.
  10. Control station record data.
  11. Rough draft field notes and disk of same
  12. Areas calculated for U.S. Surveys.
  13. Lotting completed, where applicable.
  14. Affidavits documenting testimony are signed, dated and included with returns. See Field Surveys Handbook for examples.

15. All documents supporting decisions made as communicated between office and field concerning conflicts and other unusual special case situations encountered in the survey are included. This supporting documentation should be placed in the official Survey file maintained in the Records Section (922) and/or incorporated into field notes to become public record. The contract inspector is responsible for updating these files with all written and verbal instructions to the contractor.
16. The Field or Contract Section has the responsibility to ensure that field returns are complete and meet the above requirements. This should be documented through the checklist.
17. The contract inspector will submit a marked plan of survey or other document plainly showing all lines, control traverses, corners or other field information checked; and any other calculations, field books, instructions to contractor, letters to survey file, etc. This plan of survey shall be referenced to the appropriate book and page. These field checks as documented will then become a part of the review process.
18. The field returns are submitted to the Branch of Examination and Records (922) for review and examination.

## Chapter II

CHAPTER II. OFFICE REVIEW AND EXAMINATIONA. Administrative Functions

1. Field survey returns are submitted to the Records Section (922) for input of information into the automated tracking system. Target dates for review, platting, and acceptance are noted on the survey envelope or box prior to forwarding to the appropriate examination section. The automated tracking system shall be updated at each step of the process.
2. The examination section chief assigns the project to a reviewer in accordance with the priorities established by the patent plan process.

B. Preliminary Review (Contract Projects Only)

1. Pework Meeting. All information provided to the contractor in the prework meeting, including sample plats, advice on technical problems or records preparation, minutes of the meeting, etc, will be placed in the contract review file maintained in the Examination Section. This file will be maintained by contract name and number.
2. The survey contractor is required to submit a representative sample (but no more than 5 note and plat combinations) of his final records for a preliminary review. This preliminary review is designed to give the contractor guidance in the proper formatting of final records. At this stage, no check of mathematical or graphical accuracy is performed.
3. The contractor and the examination section are required to use the sample notes and plats handed out at the prework conference and preplatting meeting as the basis for formatting the final records. These samples along with the drafting guidelines, field survey handbook, Manual of Surveying Instructions, 1973, this handbook and any additional examples furnished by the examination section are to be strictly followed for all phases of the examination process.

4. The following process will be followed in the preliminary review:
  - a. A blue-line copy of the draft plats will be forwarded to the Cartography Section (924) for an in-depth check of compliance with the drafting guidelines.
  - b. Upon return of the draft plats by the Cartography Section, the reviewer assigned to the project will conduct a thorough check of the field notes and the comments on the draft plats to assure consistency with the relevant documents listed under chapter II. B. 3. A second reviewer will perform a cursory check prior to returning the project to the contractor. A memorandum will be prepared to return the contractor's submittal to the Contracts Section (923) as well as a letter for the signature of the Chief, Branch of Survey Preparation and Contracts for return of the project to the contractor. The reviewer will update the contract review file in the Examination Section with copies of all preliminary review data.

C. Critical Review

The reviewer checklists contained in Appendix pages 7 to 9 will be used and completed for every field note and plat unit reviewed. This is to ensure that all requirements have been met, checked and to provide documentation of same. Checklists shall be maintained by reviewer and section chief until acceptance of survey. Checklists will be stored with the field survey information.

1. After log in, the project should be reviewed for compliance with submittal of the required items. See "Field Returns Checklist" in Appendix pages 1 to 6.
2. Survey File Review. Read the Survey File for the following:
  - a. Survey Request.
  - b. Assignment Instructions or Notice to Proceed.
  - c. Special Instructions including all Supplementals or Amendments.
  - d. All other related correspondence and instructions to contractor or field surveyor.
  - e. Possible protest evaluation. Potential problems in this regard should be reflected by documentation in the field note record.

3. Historical records review. Review applicable history of previous surveys including both public and private.
4. Land Status Review. Check the most recent MTP for land status: Patents, Interim Conveyances, Tentative Approvals, Native Allotment Applications, Public Domain Lands, Withdrawals, Leases, Acquired Lands, Trust Patents or Deeds, Subsurface or Mineral Estates and other Federal Interests.
5. Correlate the field notes with the true line plat for continuity and completeness.
6. Survey should be checked for relationship to other concurrent or adjacent surveys. Determine approval sequence if necessary.
7. Field Notes: follow checklist in Appendix.
8. True line plat: follow checklist in Appendix.
9. Formulate survey procedure opinion and verify with field surveyors procedure for agreement or disagreement. This step may involve confirmation of opinion through discussions with the field surveyor.
10. Legal and professional aspects of review and examination process.
  - a. Has the intent of the applicant/field exam been carried out by the special instructions and the surveyor?
  - b. Have bona fide rights been protected?
  - c. Have Junior/Senior relationships been established or interpreted?
  - d. Have controlling intermediate monuments been bypassed or properly selected?
  - e. Has all collateral evidence been correctly interpreted, evaluated and treated correctly, especially when conflicting?
  - f. Was the proper procedure used in the establishment of local corners and have they been treated properly with valid acceptance or rejection criteria? Have these been properly documented in the field notes?

- g. Has proper proportionment method and procedures been selected and applied for reestablishing lost corners?
- h. Have the proper controlling corners been used to reestablish lost corners, i.e., Jr./Sr. relationships?
- i. Has current policy been followed, i.e., true point establishment from W.C.'s?
- j. Has local testimony been employed? Is it relevant? Is it documented with an affidavit?
- k. Have guidelines of Manual been followed? If not, why not? Has it been documented?
- l. Have legal principles as outlined in Manual, applicable IBLA decisions, court decisions (precedent setting), Federal and State laws, adherence to regulations, policies and procedures been correctly applied to the situations as encountered in the field survey?
- m. Have riparian determinations been properly interpreted and applied to the situation? Examples: accretion, reliction, avulsion, navigability, governing state laws, IBLA decisions correctly applied (Rosenbaum vs. U.S., Madison vs. Basart), substantial accretion, medial line determinations, historic river movements researched adequately.
- n. Has good faith location demonstrated by location of occupation (fences, roads, ditches, etc.) been sufficiently investigated and/or verified and the proper professional judgment applied in decisions to accept or reject, to protect claimants bona fide rights? Has this been properly documented in the field notes?
- o. Do the field notes properly document the decisions made during the course of the survey or are the field notes just an abbreviated formality required in a U.S. Government survey?
- p. Has ownership status been correctly verified and decision depending on ownership been correctly applied to survey procedure and platting requirements? Surface vs. subsurface estates, acquired lands, public domain lands, federal interest lands, and survey authority properly applied?



- q. Have Special Instructions been followed and do Specials need Supplementals or Amendments to authorize the field surveyor to perform the necessary aspects of the survey limited to Federal Survey Authority?
  - r. Have protests been properly considered and conflicts investigated and resolved prior to final decisions?
11. If field corrections are necessary a memo is routed to the Chief, Branch of Field Surveys. This includes memos addressed to the Chief, Branch of Survey Preparation and Contracts. Documentation is placed in U.S.S. or Group File and in corrections file maintained by Branches of Examination and Field Surveys as well as the Contract Section that corrected work has been completed and verified.
12. a. Plat and field notes are returned to contractor or inhouse work is transmitted to Cartography Section and editorial assistant through the Records Section. The Records Section updates automated tracking system. Projects being returned to contractors require the preparation of a memo to Chief, Branch of Survey Preparation and Contracts (923), transmitting the project to that Branch. This memo should include the following:
- (1) A synopsis of the problems noted and corrections required to bring the project up to BLM standards.
  - (2) An evaluation of the contractor's performance in the preparation of final records.
  - (3) Any problems noted as a result of the contracting process and recommendations to mitigate those problems in the future.

- b. A letter to the contractor shall also be prepared for signature of the 923 Branch Chief. This letter should include the following:
- (1) An indepth discussion on problems encountered with the project during the review process. This discussion should first focus on general problems then move on to problems specific to an individual plat and field note unit.
  - (2) A listing of required field corrections (if any).
  - (3) A statement requiring the return of the reviewed copy of the field notes and plats along with all necessary information to verify field corrections ordered. Based upon the quality of the first submittal and the number of corrections or changes required, the reviewer decides whether to ask for final notes and plats or another draft copy for review.

D. Final Review

At this stage, all questionable procedures and legal aspects should have been properly answered when the field surveyor first encounters problems or by questions through the reviewer in the critical review process. These communications shall be documented as necessary with reviewers, supervisors and Branch Chief with final decisions documented in the survey file. A final procedural review is performed at this time.

1. Final plat and field notes are returned through the Records Section where they are again logged into the tracking system.
2. Final Approval Preparation
  - a. Cursory check of field notes and plats for required corrections (Contract Projects only). For inhouse projects, the reviewer will need to check the graphical correctness of the plat as representing the survey performed as well as performing a check of the field notes against the plat.
  - b. The final field notes and plat is presented to the field surveyor for his signature. For contract projects which required another submittal in draft form, the contractor will have to be contacted and informed of any additional corrections and asked to submit his final signed records.

- c. The supervisor of the Examination Section has the responsibility to spot check surveys to ensure that all requirements have been met.
- d. Inhouse plats are transmitted to the Photo Lab (924) for photographic reproduction of the final plat.
- e. Field surveyor signs "Plat Only" record.
- f. Delivery for Acceptance Notice (goldenrod) is filled out by the reviewer. See Appendix page 10.
- g. The final plats and field notes are submitted to the Deputy State Director for acceptance signature.
- h. Accepted plat and field notes are transmitted to the Records Section for processing.

## Chapter III

CHAPTER III. SUPPLEMENTAL PLATSA. General

Supplemental Plats are prepared entirely from office records to show a revised subdivision of one or more surveys without changing the survey boundaries and without modification of the record.

B. Authority

The authority to request a supplemental plat has been delegated to each Branch Chief in the Division of Conveyances (AK-960).

Rules for preparation of supplemental plats are found in sections 9-65 through 9-75 and 9-108 of the Manual of Surveying Instructions, 1973. For use in Alaska, the term "office records" has been expanded to include official records of the State of Alaska [A.S.L.S., Engineering Plat Files, Right of Way Surveys, etc.]. Use of unrecorded private surveys in the preparation of supplemental plats is not authorized.

On a supplemental plat, all the records used to produce the plat must be completely compatible. The acreage of the supplemental plat will always be equivalent to the acreage of the original plat minus the acreage of any segregated inholding surveys. If this condition does not exist, i.e., U.S. Surveys having a different meander line than the original rectangular plat and that rectangular survey has no hard copy meanders which can be evaluated to reconcile the differing records, then it will necessary to produce an Amended Plat rather than a Supplemental Plat. If the computation of area based on a subdivision does not equal the original area, the area should be prorated based on the original area.

On protracted subdivision townships it is not necessary to show the bearings and distances along each line of a segregated inholding survey. It is required to show appropriate ties between corners of the inholding survey and rectangular survey from points of intersection of actually surveyed lines. [See Manual sec. 9-69]

### C. Review of Supplemental Plats

1. Legal Aspects. Review request for supplemental. Be sure plat accommodates the request and there are no other surveys in conflict or not taken into account.
2. Land Status. Check the most recent MTP for any patents, IC's, TA's, Native Allotment Applications, withdrawals, leases, QCD's, or other interest that may affect the plat.
3. Records Compatibility. Check to be sure the supplemental plat is fully compatible with the records used to produce it. This includes checks for area accountability as well as spot checks of inholding depictions and distances where surveyed lines intersect.
4. Plat Memorandum. Be sure the plat memorandum references the records and acceptance dates of those records as well as giving a brief description of what the plat represents. See sample plat memorandums in Appendix pages 11 to 16.
5. The plats are then processed to acceptance as outlined in Chapter II, section D. 2. c. through h.

## Chapter IV

CHAPTER IV. AMENDED PLATSA. General

Amended plats are plats in which the acreages of the original plat are changed due to a change in the hydrography as depicted, due to an error in platting, or due to incompatibility of the records used to produce the plat. Amended plats should not be used to correct gross errors that require cancellation or suspension of survey plats and further field investigation.

B. Authority

Authority to produce Amended plats comes from Instructional Memorandum AK 88-268, August 29, 1988, "Navigable Water and Survey Platting." See Appendix pages 17 to 22. Amended plats will be produced in the following circumstances:

1. On plats to facilitate conveyances to the State of Alaska that were accepted prior to December 5, 1983, where the hydrography is depicted on the plat but not segregated from the gross acreage of the township, upon request from AK-960 an amended plat will be prepared to meander and segregate any navigable or meanderable waters where additional inholdings are required prior to patent.
2. On plats accepted after December 5, 1983, where conveyance is scheduled to the State of Alaska and where no prior navigability determination has been made, an Amended plat will be produced if navigable waters are not depicted.
3. If a native corporation can provide conclusive evidence of a gross error in the depiction of the hydrography to AK-960 and AK-920, an Amended plat will be prepared upon request from AK-960.
4. Where conveyance is scheduled to a native corporation, an Amended plat will be produced to segregate all navigable waters not depicted on the original plat.

5. If in the preparation of a supplemental plat there is an incompatibility of the records being used to produce the plat such that acreage cannot be reconciled, and where there are no gross errors which would necessitate a field investigation, an Amended plat will be produced. See Drafting Guidelines for Supplemental and Amended Plats. This may include the preparation of orthophotos by the Branch of Mapping Sciences (924) to upgrade hydrography originally obtained from Quadrangle Maps.

C. Review of Amended Plats

The review of amended plats will follow the outline for review of supplemental plats.

## Chapter V

CHAPTER V. ANNOTATED PLATS

A. Annotated plats are plats that contain a notation which modifies some aspect of the original plat. Annotations are performed only in the following circumstances:

- When necessary to suspend, cancel or lift the suspension of an original plat.
- To correct erroneous geographic positions.

Other annotations formerly performed by this office will no longer be acceptable as per Washington Office Instruction Memorandum No. 89-421. See Appendix pages 23 to 27. Errors, if extensive enough to materially affect the survey, should be rectified by a corrective survey. Errors of a minor nature that do not materially affect the survey should not require a plat notation. Supplemental Plats may be prepared to clarify misleading information that was not a direct result of the field survey.

B. Annotations to suspend, cancel or lift the suspension of an original plat shall be authorized by memorandum signed by the Deputy State Director for Cadastral Survey. The correction of erroneous geographic positions requires a correction note and signature block for DSD approval and date on the plat. See Chapters VII and VIII for guidance in the preparation of memorandums.



## Chapter VI

CHAPTER VI. RECORDS DISTRIBUTION PROCESSA. Official Surveys

1. Original survey plats and field notes are delivered by Branch and Examination Section to Records Staff after they have been approved by the DSD. Check to make sure that all survey plats and field notes have been signed.
2. Put all Survey Plats in numerical order with Groups first. Record the receipt of each plat and accompanying field notes on Officially filed form. See Appendix page 28. If plats are delivered with field notes (original and duplicate copies), note this with an \* (asterisk). Separate the original and duplicate field notes into two piles. Also include the purpose i.e., native allotments, dependent resurveys, supplemental plats, right-of-ways, cancellations, refilms, or mineral surveys. All of the information needed is found on the Delivery Notice attached to each approved survey plat. The information can later be transferred to a memo for distribution.
3. Plats are dated with an automated lettering machine. Allow about two weeks after delivery by Examination Section for the Officially Filed date. This will give Title and Land Status time to plot them on the Master Title Plats, film, and forward them to the Public Room for final filing of aperture cards and field notes on/or before the officially filed date.
4. Contact Representative prepares aperture cards and paper copies. Three originals, three duplicate aperture cards, and one paper copy (two paper copies if rectangular/group surveys) are made. Records staff will make three copies of field notes, one copy for Public Room, one for Title and Land Status, and the third copy is stored in the Records Section to provide access to the field notes while the originals are being filmed.
5. Original plats are sent to the Photo Lab (924) for duplicate originals. Fill out a Plat Reproduction Request form See Appendix page 29 for duplicate originals on 7 mil. mylar. Order one duplicate, count the number of plats and hand deliver the originals to the Photo Lab. When they are returned, the original plats and field notes are sent to the Service Center (SC) in Denver by registered mail and the duplicate plats and field notes are sent by certified mail to Eastern States Office (ESO).

6. Prepare a plat transmittal memo for distribution. The memo should include the officially filed date, survey number, acceptance date, purpose, applicant, serial number, township, range and meridian. See Appendix pages 30 and 31.
7. Make 8 copies of the memo for distribution (9 copies if rectangular, 10 if mineral). Following is the distribution list for the copies:
  - a. Title and Land Status - original aperture cards and photocopy field notes
  - b. Service Center - original plats and original field notes for filming
  - c. Eastern States - duplicate plats and duplicate field notes
  - d. State of Alaska - original aperture cards
  - e. BIA/Anchorage - duplicate aperture cards
  - f. BIA/Juneau - paper copies of plats
  - g. Fairbanks Support Center - duplicate aperture cards
  - h. Campbell Tract Facility (CTF) - duplicate aperture cards
  - i. U.S.G.S. - paper copies of rectangular plats

In addition, copies of each memo are sent to:

924: Autocartographic/Reprographics (Supplemental and Amended plats only)  
 944: LIS  
 960: Conveyance Management  
 963: Calista Adjudication  
 964: Doyon Adjudication  
 965: Northwest Adjudication  
 966: Southwest Adjudication  
 967: KCS Adjudication  
 968: CIRI/Ahtna Adjudication  
 U.S.D.I., National Park Service, Division of Lands, Anchorage  
 U.S.D.A., Forest Service, Engineering, Juneau  
 Planning Director, Kenai Peninsula Borough  
 Mailroom-Central Filing  
 Survey File copy

See Appendix pages 32 and 33 for addresses.

8. Service Center returns the original survey plats, field notes, and microfiche after they have been filmed (usually takes about a month). They arrive in mailing tubes by registered mail. Check the returned articles against the records of transmittal. Contact Representative distributes microfiche to CTF, Fairbanks Support Center, Public Room, and Records Section microfiche files. The survey plats and field notes are hand delivered to Cartography Section (924) for posting. A copy of the DSC memo goes to the Miscellaneous Documents Examiner for tracking. After posting, the Contact Representative is responsible for filing the original plats and notes at CTF.

**B. 14(c) Procedure**

14(c) plats need to be certified by the State District Recorder and distributed after DSD acceptance. The State has provided a list of Recording Offices with their addresses and small size maps which indicate the Districts from which we can pin-point the exact Recording District for 14(c) projects. See Appendix pages 34 to 36.

Use the approved form letter for DSD signature when transmitting the 14(c) plat to the Recording District. This will be recorded as a type of affidavit. See Appendix page 37.

Include two (2) duplicate original plats, one (1) paper copy of the original plat and the original plat with the transmittal; the duplicates will be dated and certified by the District Recorder and returned to the DSD. One duplicate will be delivered to the appropriate Village Corporation, the other will be kept for official Division records, and an aperture card will be filed in the Public Room. The original plat and the paper copy are retained by the District Recorder as a permanent record of the State.

Obtain money from the imprest fund for the State filing fee: \$20 for the first sheet and \$5 for each additional sheet. The 14(c) Representative (923) will take the plats to the State, have them recorded and return the original receipt to the imprest fund. See Appendix page 38.

Give the signed form letter from the DSD to the 14(c) Representative and send the certified plats to the Village Corporation (certified mail).

## Chapter VII

CHAPTER VII. SUSPENSION AND CANCELLATION OF SURVEYSA. Suspension of Surveys

There are occasions when an error is discovered on an approved plat which requires field investigation for problem resolution and correction. In this situation, the plat should be suspended so that no land transactions can take place based on that plat. Procedures to be followed for suspension of plats are as follows:

1. A memorandum should be written to the Chief, Branch of Examination and Records, requesting suspension of the plat and providing documentation for that suspension.
2. If it is determined there is a valid reason for suspension, a memorandum is prepared for signature of the DSD. See Appendix pages 39 to 42 for examples.
3. The suspended plat shall be annotated in the lower left hand corner with a statement similar to the following: "Suspended, Month - Day, Year - File Group/U.S. Survey No. xxx, Alaska, 9611.1 (922)." See Appendix page 43 for example. Be sure to use the proper Subject Code for the survey in question.
4. Aperture cards are prepared for normal distribution. The distribution memorandum shall clearly state that the new aperture cards supercede those previously on file; the old aperture cards are to be removed and discarded.
5. The annotated plat is sent to SC by registered mail. A copy of the suspension memorandum is sent to the Eastern States Office along with a request to have the suspension notice added to the duplicate plat.
6. After return of the original plat from SC, normal distribution is made of the returned articles.
7. Suspended plats normally require cancellation after the completion of field investigation and issuance of a new plat. Occasionally a suspended plat is reissued. In this situation, the same procedure used in suspending a plat can be followed. See Appendix page 44 for example memorandum.

## B. Cancellation of Group Surveys

When there are unresolvable errors on the original plat or when a protracted "paper" survey exists with no patents or other land transactions having been based on that plat, a plat requires cancellation. In the case of unresolvable errors, this action usually predates or coincides with the issuance of a new plat which corrects those errors. For protracted surveys, these plats are cancelled based on a 1984 Memorandum of Agreement between the State of Alaska and Department of Interior.

Steps to be followed in cancelling surveys are as follows:

1. Based upon a memo from Conveyances, in the case of protraction surveys or upon confirmation of unresolvable errors on a plat, a memo is written for DSD signature which clearly states:
  - a. The reason for cancellation and that "no land transactions have taken place based on this plat, and therefore this Group Survey is hereby cancelled."
  - b. A reference to the memo from Conveyances, if appropriate.
2. The original plat should be marked with the CANCELLED stamp, new aperture cards made and distributed in Alaska, and the original plat subsequently sent to Micrographics in the SC to be refilmed and the microfiche distributed. At the time of this distribution, the microfiche which show the plat with the CANCELLED stamp should replace the existing microfiche at the various outlets where it is made available to the public.
3. The duplicate plat/notes at the Eastern States Office shall be marked CANCELLED.
4. The survey should be removed from the Master Title Plat. Note that on the MTP for townships which are surveyed, the heading of the MTP reads "Surveyed...". The headings on these MTP's need to be changed due to the cancellation of these protracted surveys. Note also that MTPs for the northern part of Alaska are maintained at the Fairbanks Support Center.
5. The survey should be removed from the working copy of the Protraction Diagram with a marginal note mentioning the date of removal.
6. The survey should be deleted from AALMRS/cadastral system (the AALMRS system does not have a code for cancellation of surveys).

Refer to Appendix pages 45 to 49 for sample memorandums and cancelled plat.

7. Gather the documentation of cancellation and insert into the appropriate survey file (or create a file for this information if one is not available) and move the plat into the cancelled drawer at the CTF.

A memorandum shall be written and sent to every DSD within the state who has some responsibility in the maintenance of lands records. At a minimum this would include the following:

- DSD for Conveyance Management (960)
- DSD for Support Services (970)
- DSD for Information Resources Management (940)

This memo would state that the subject survey has been cancelled and request they dispatch their responsibility in maintenance of the lands records. A copy of the cancellation memorandum shall be included.

Separate memos should be written to SC and ESO.

#### C. Cancellation of U.S. Surveys

Occasionally it is necessary to cancel a U.S. Survey. Typically the request to do this will be initiated from within the Division of Conveyances, and will take the form of a memo to Cadastral which clearly states the reason for cancellation and that Conveyances has done all the research to ensure it is suitable for cancellation (has not been patented, etc.).

Following are the steps to be taken in cancelling these surveys:

1. Based on the memo from Conveyances, write a memo for DSD signature which clearly states:
  - a. The reason for cancellation and that "no land transactions have taken place based on this plat, and therefore this U.S. Survey is hereby cancelled."
  - b. A reference to the memo from Conveyances.
2. The original plat and notes should be marked with the CANCELLED stamp, new aperture cards made and distributed in Alaska, and the original plat subsequently sent to Micrographics in the Service Center to be refilmed and the microfiche distributed. At the time of this distribution, the microfiche which show the plat/notes with the CANCELLED stamp should replace the existing microfiche and the various outlets where it is made available to the public.
3. The duplicate plat/notes at the Eastern States Office shall be marked CANCELLED.

4. The survey should be removed from the Master Title Plat - Note - MTPs are maintained at CTF and at the Fairbanks Support Center.
5. The survey should be removed from the working copy of the Protraction Diagram (and District Sheet if appropriate), with a marginal note mentioning the date of removal.
6. The cancellation should be noted on the white (U.S. Survey) and pink (Native Allotment) cards in the Special Instructions Section.
7. Gather the documentation of cancellation and insert into the appropriate survey file (or create a file for this information if one is not available), and move the plat into the cancelled drawer at CTF. The AALMRS system does not have a code for cancellation of surveys, consequently to avoid confusion an abstract should be made on paper to go into the survey file, then the survey deleted from AALMRS.

Refer to Appendix page 50 for sample memorandum.

Gather the documentation of cancellation and insert into the appropriate survey file (or create a file for this information if one is not available) and move the plat into the cancelled drawer at CTF.

A memorandum shall be written and sent to every DSD within the state who has some responsibility in the maintenance of lands records. At a minimum this would include the following:

- DSD for Conveyance Management (960)
- DSD for Support Services (970)
- DSD for Information Resources Management (972)

This memo would state that the subject survey has been cancelled and request they dispatch their responsibility in maintenance of the lands records. A copy of the cancellation memorandum shall be included.

Separate memos should be written to SC and ESO.

## Chapter VIII

CHAPTER VIII. NON-MINERAL DEPOSIT SURVEYS-7130 ACCOUNTSA. Process.

Deposit survey accounts need to be closed out approximately six months after acceptance of the survey or when the Division of Conveyances (960) wishes to proceed to patent and no final cost accounting has been performed. The process to be followed when closing these accounts is as follows:

1. The survey cost sheet (form AK 9600-16) can be found on the inside cover of the survey file. Costs or time charges should be listed for every step of the process (field survey, per diem, monuments, records prep, cartography, review) by the executing party. See Appendix page 51.
2. Using the pay scale for the appropriate year, compute the labor cost for each step of the process and list those costs in the correct space on the survey cost sheet. Be sure to take into account the current COLA percentage.
3. Compute the cost for survey monumentation based on the price of the monuments at the time of survey.
4. Total the amounts and list under the TOTAL FIELD AND OFFICE COSTS .
5. Multiply the total cost by 0.18 to determine the approximate administrative charges.
6. Add the administrative cost to the subtotal for the final survey cost.
7. Check the special instructions or the case file for the survey deposit made by the applicant.
8. Determine whether your estimated cost accounting indicates the need for a refund or an additional deposit.



9. Check the microfiche cards in the Budget Section (918) to verify if your accounting approximates the charges to the survey and the amount of refund/deposit needed:
  - a. The fiche cards numbered PG130P2 carry the totals for deposit survey accounts. Look at the index on the most recent card and find where to look for the account in question. See Appendix pages 52 and 53.
  - b. If the amount listed under available balance is close to the amount you determined prepare your memo as listed below. See Appendix page 54.
  - c. If there is a discrepancy in excess of 100 dollars you will have to research the PG130P2 cards to find out if all charges have been made against the account. If a refund is indicated and there has been no activity in the account for a year or more, it is likely you will refund the amount listed on the PG130P2 card. Many times no administrative charges are billed against the account and none will be at such a late date.
  - d. If there is a serious discrepancy you cannot reconcile, check with the figures kept by the staff Program Analyst (920) to see if you have made an error in your computations. The field surveyor who performed the survey can also be consulted to be sure he properly coded his time and per diem. If this cannot be resolved, it will be necessary to check with the accounting technician in the Budget Section (918) for problem resolution. It may be necessary to have an audit made of the account.
10. Prepare memo for the action necessary to this account:
  - a. If a refund is indicated, a memo should be prepared for the signature of the Branch Chief (922) and sent to the Accounting Technician (974A) through the Budget Officer (918) requesting the refund be made and the account be closed. See Appendix page 55.
  - b. If an additional deposit is required, a letter should be prepared and sent via certified mail to the applicant requesting a further deposit. See Appendix page 56.
  - c. In the case of an additional deposit, when that is received and all costs have been charged against the account a memo should be prepared as in a. above asking that the account be closed.

## Chapter IX

CHAPTER IX. LIBRARYA. Function.

A division-wide library will be maintained within the Branch of Examination and Records. The main function of this library will be to serve as a focal point for the gathering of technical and professional information. The materials within the library will consist of the following:

1. Manuals of Surveying Instructions past and present plus any other U.S. Government publications pertinent to cadastral surveying such as "A History of the Rectangular Survey System."
2. Code of Federal Regulations and U.S. Code Annotated.
3. Acts of Congress which affect public and Alaska lands.
4. Digests of judicial cases and IBLA decisions.
5. Division manuals and handbooks.
6. Manuals and handbooks from other state office divisions.
7. Notebooks on policy and procedures past and present
8. Survey society periodicals (ACSM).
9. Co-op college newspapers.
10. Reference books.
  - a. Surveying
  - b. Legal
  - c. Land descriptions
11. Notebooks from past plat seminars.
12. Professional surveyors magazines.
13. Training materials/video tapes concerning cadastral surveying.

B. Manual Updating and Maintenance.

Responsibility for maintenance of policy handbooks rests with the Branch of Examination and Records (922). The Chief, Branch of Examination will assign a committee to review and assess the handbooks on a yearly basis. This committee will be appointed on or about January 2 of each year and will complete their assignment by March 1. The committee will also monitor compliance with the handbooks. As an assist to the yearly committee, the following procedure will be followed in the issuance of policy memorandums:

1. Memorandums concerning policies and procedures will state the subject matter and the memorandum or directive it will supersede, change or rescind. Policy memorandums should cross reference the subject matter to previous memorandums or directives.
2. Any memorandum written on policy and procedures within the Division of Cadastral Surveys will be sent to the Chief, Branch of Examination and Records (922). The Branch Chief will forward the memorandum to the Records Section (922) where it will be filed in the master copy of the proper handbook located within the Branch. The Records Section will be responsible for distribution of the memorandum to each Branch within Cadastral Survey. Each Branch will assign a lead person to file and maintain their copies of the handbooks.

## Chapter X

CHAPTER X. PLAT MEMORANDUMSA. General.

The plat memorandum provides a condensed comprehensive history of the survey recorded by the use of a specific official plat. A memorandum is required on every plat. Cadastral surveys in general create, reestablish, mark, and define boundaries of tracts of land by a variety of plat processing methodologies. The context of an applicable memorandum varies in conformity to the existing type of survey required. Examples of the various different types of plat memorandums are found in the Appendix, pages 57 through 67.

B. "Plat Only" U.S. Surveys.

The basic context for a "Plat Only" U.S. Survey would include the following:

1. This plat contains the entire survey record.
2. History, if applicable.
3. Executed by, when, according to Manual, etc.
4. Area in acres.
5. Azimuth and how determined.
6. Geographic position and how determined.
7. How magnetic declination was determined.
8. Location, land, soil vegetation, etc.

C. U.S. Surveys with Field Notes.

The basic memorandum context requirement for a U.S. Survey plat which has field notes would include:

1. Number of lots, if applicable.
2. Location.
3. Geographic position.
4. Area in acres.
5. Executed by, when under Special Instructions, etc.

D. Rectangular Surveys.

The rectangular survey memorandum will vary in requirements depending upon whether the survey has field notes or is a monumentation jacket style. The basic memorandum context for rectangular surveys would include:

1. History of prior surveys, if applicable.
2. Description of survey.
3. Who performed survey, title.
4. Date of survey.
5. Special instructions, group number, date where applicable.
6. Contract number, if applicable.
7. Assignment instructions or notice to proceed and applicable dates.

E. Other.

Within the perimeter of basic memoranda requirements fall a myriad of diversified specific memorandum requirements applicable only to the survey at hand. In this category fall different types of survey plats such as supplemental plats, amended plats, etc. Supplemental plats and amended plats have been further expounded on in Chapters III and IV of this handbook.

F. Certificates of Approval.

The certificate shows official acceptance of the survey as represented on the plat. The composite form and arrangement of the certificates should show uniformity as far as practicable on all plats. Authority for the approval of surveys of public lands is vested in the Director, Bureau of Land Management, under direction of the Secretary of the Interior.

**APPENDIX**

CHECK LIST TO BE ATTACHED TO SURVEY PACKETS  
SUBMITTED TO THE BRANCH OF EXAMINATION (922)  
by the Branch of Field Surveys (921)

UNIT CHIEF \_\_\_\_\_

SURVEYOR \_\_\_\_\_ GROUP or U.S. SURVEY NO. \_\_\_\_\_

List all Townships or U.S. Surveys on the reverse side of this page with miles, monuments, and acres for each township. This accounting is to be broken down for surveys, resurveys, special surveys, and remonumentations.

CHECK ITEMS

- Sketch Plat of Control Traverses indexed to Field Books. \_\_\_\_\_
- Computed GP matches scaled GP. \_\_\_\_\_
- Surveyors Rough Draft Field Notes \_\_\_\_\_
- Surveyors Preliminary Plat (true line) or automated plotted plat. \_\_\_\_\_
- Surveyors Field Sketch Plat (dirty sheet) indexed to field book. \_\_\_\_\_
- Surveyors printout (calculations) based on the true line plat. \_\_\_\_\_
  - 1. Closures \_\_\_\_\_
  - 2. Areas \_\_\_\_\_
  - 3. Miles of survey, resurveys, and meanders \_\_\_\_\_
- Copy of original records as furnished to field surveyor (field envelope) \_\_\_\_\_
  - 1. Plats \_\_\_\_\_
  - 2. Field Notes \_\_\_\_\_
  - 3. Master Title Plats and Historical Indices \_\_\_\_\_
  - 4. Quad Maps \_\_\_\_\_
- Private and Local Records. \_\_\_\_\_
- Other Data pertinent to complete the final review. \_\_\_\_\_
- Deeds, PLO's, Exec. Orders, Field Examiner's Report, etc. \_\_\_\_\_
- Surveyor's Field Books. \_\_\_\_\_
- Field Books properly indexed and complete \_\_\_\_\_
  - (i.e., proper and complete cor. descrip. as set or found; \_\_\_\_\_
  - cor. rubbings, books referenced) \_\_\_\_\_
- Parenthetical distances computed and shown on the preliminary plats. \_\_\_\_\_
- Areas surveyed, computed, and shown on the preliminary plats. \_\_\_\_\_
- On dependent resurveys, areas only shown where there is a 5% difference. \_\_\_\_\_
  - (NOTE: only to be shown on resurveys of federal land.) \_\_\_\_\_
- For cost surveys, the cost sheets should be included \_\_\_\_\_
- Activity Job Code \_\_\_\_\_

**CHECK LIST TO BE ATTACHED TO CONTRACT SURVEY PACKETS  
SUBMITTED TO THE BUREAU OF LAND MANAGEMENT  
FOR REVIEW**

SURVEYOR \_\_\_\_\_ GROUP or U.S. SURVEY NO. \_\_\_\_\_

List all Townships or U.S. Surveys on the reverse side of this page with miles, monuments, and acres for each township. This accounting is to be broken down for surveys, resurveys, special surveys, and remonumentations.

**CHECK ITEMS**

- Sketch Plat of Control Traverses indexed to Field Books. \_\_\_\_\_
- Computed GP matches scaled GP \_\_\_\_\_
- Surveyors Rough Draft Field Notes \_\_\_\_\_
- Surveyors Preliminary Plat (true line) or automated plotted plat. \_\_\_\_\_
- Surveyors Field Sketch Plat (dirty sheet) indexed to field book. \_\_\_\_\_
- Surveyors printout (calculations) based on the true line plat. \_\_\_\_\_
  - 1. Closures \_\_\_\_\_
  - 2. Areas \_\_\_\_\_
  - 3. Miles of survey, resurveys, and meanders \_\_\_\_\_
- Copy of original records as furnished to field surveyor (field envelope) \_\_\_\_\_
  - 1. Plats \_\_\_\_\_
  - 2. Field Notes \_\_\_\_\_
  - 3. Master Title Plats and Historical Indices \_\_\_\_\_
  - 4. Quad Maps \_\_\_\_\_
- Private and Local Records. \_\_\_\_\_
- Other Data pertinent to complete the final review. \_\_\_\_\_
- Deeds, PLO's, Exec. Orders, Field Examiner's Report, etc. \_\_\_\_\_
- Surveyor's Field Books. \_\_\_\_\_
- Field Books properly indexed and complete \_\_\_\_\_
  - (i.e., proper and complete cor. descrip. as set or found; \_\_\_\_\_
  - cor. rubbings, books referenced) \_\_\_\_\_
- Parenthetical distances computed and shown on the preliminary plats. \_\_\_\_\_
- Areas surveyed, computed, and shown on the preliminary plats. \_\_\_\_\_
- On dependent resurveys, areas only shown where there is a 5% difference. \_\_\_\_\_
- (NOTE: only to be shown on resurveys of federal land.) \_\_\_\_\_



CONTRACTOR CHECK LIST

The following lists will be completed for each U.S. Survey or Township submitted.

FIELD NOTES

<u>Title Page</u>	<u>Checkers</u>	
	<u>1st</u>	<u>2nd</u>
Description of Surveys complete:		
Tp. ( ) Rg. ( ) Mer. ( ) State ( ) U.S.S. ( )	_____	_____
Surveyor's name and title	_____	_____
Date of SI/SSIs	_____	_____
Approval date of SIs/SSIs	_____	_____
Gp. No. correct	_____	_____
BLM/FS Contract No.	_____	_____
U.S. Survey No.	_____	_____
Dates of Assignment Instructions	_____	_____
Notice to Proceed	_____	_____
Date: Survey commenced ( ) Completed ( )	_____	_____
Geographic Position - U.S. Surveys Only	_____	_____
Check index to agree with page numbers	_____	_____
 <u>Introductory Paragraphs</u>		
Description of survey matches title page	_____	_____
History complete - checked against original documents	_____	_____
Reference to <u>Manual</u> and Special Instructions	_____	_____
Method used to establish direction of survey lines	_____	_____
Statement concerning search for intervening corners (Dep. Resurveys)	_____	_____
Method of Meanders if hard copy meanders are included	_____	_____
Statement when utilizing protracted corner positions	_____	_____
Geographic coordinates of points in survey, how determined and NAD 1927	_____	_____
Mean magnetic declination and how determined	_____	_____
Preliminary Statement (when necessary)	_____	_____
 <u>Body of Notes</u>		
Page Numbers	_____	_____
Headings describe survey line/lot covered on first line of page	_____	_____
Line description at beginning of each line	_____	_____
Name of previous surveyor and year of survey (resurveys only)	_____	_____
Notes in proper order (See Field Survey Handbook)	_____	_____
Topo calls - check against original record (resurveys)	_____	_____

Lines across page as needed.  
 All previously established corners accounted  
 for (resurveys)  
 Improvements  
 All Control Stations used are tied  
 U.S. Survey Lots tied together  
 Townships have inholdings tied  
 Land, soil, timber description at end of each  
 rectangular survey mile

_____	_____
_____	_____
_____	_____
_____	_____
_____	_____
_____	_____

Corner Descriptions

Evidence of found original corners fully described  
 (Manual 6-29)  
 New monument described - size - how set  
 Cap Markings  
 Disposition of found original monuments  
 Size of mound  
 BTs/Accessories correct sequence:  
 Species ( ) Diam. ( ) Bearing ( )  
 Dist. in lks. ( ) Markings ( )  
 Are found corners latest record? Yes ( ) No ( )  
 If modified, is record shown? Yes ( ) No ( )  
 Corners reestablished using proper control  
 and procedures

_____	_____
_____	_____
_____	_____
_____	_____
_____	_____
_____	_____
_____	_____
_____	_____
_____	_____
_____	_____

Other

Check for consistency in wording and format  
 General Description  
 Field Assistants  
 Certificate of Survey agrees with cover page and  
 introductory paragraph

_____	_____
_____	_____
_____	_____
_____	_____

CONTRACTOR CHECK LIST

PLAT

Checkers  
Initials

1st      2nd

Title: Tp. ( ) Rg. ( ) Mer. ( ) U.S.S. ( )  
State ( )

Subtitle (not required on original surveys)

Plat border 16 X 21 inches

North arrow with true north

Magnetic Declination

Historical and/or concurrent surveys labeled along  
common boundaries

Scale with unit of measurement

Lettering/line weights comply with platting guidelines

Space available for plat memo and acceptance  
certificate and plat only surveyors certificate

Adjoining surveys correctly shown if applicable

Latitude/Longitude (includes N and W) and NAD 1927  
(assures accuracy)

Plat Agrees With Field Notes in All Respects

Nothing on plat which is not identified/described  
in notes except lot numbers and areas

Curve data needed: radius, length, bearing and  
distance of chord

Bearing and dist. to all monuments on surveyed lines  
(except W.C.'s)

CC as needed

MC/AMC/SMC as needed

WC as needed, bearing and dist. from true pt. to W.C.

AP as needed

WP as needed

Proper labeling: Rivers, Reservations Bdys.,  
Standard Parallel, Concurrently Surveyed, Dependent  
Resurvey

Ties to U.S. Surveys (when appropriate)

Ties over 80 chs. in forward bearing to seconds.

Total area surveyed at center of each section  
(original surveys)

Ties to control. (assures accuracy)

Lotting

Compare land status with lotting

Check areas of new lots

Check for repetition of lot Nos.

Compare lot Nos. with previous plats

Sequence of lot Nos.

Check proportions

	<u>Checkers</u>	
	<u>Initials</u>	
	<u>1st</u>	<u>2nd</u>
Check parenthetical distances	_____	_____
Section numbers complete and proper sequence	_____	_____
Compare with plats of previous or concurrent surveys having common lines	_____	_____
Check Tp., Sec., and/or lot closures (U.S. Surveys)	_____	_____
Structures and topography if needed.	_____	_____
Total area surveyed at bottom of plat (original surveys)	_____	_____

Plat Memorandum

History of previous surveys or reference to history in Field Notes	_____	_____
Description of survey or resurvey agrees with cover page of notes	_____	_____
Name of Surveyor(s) title	_____	_____
Beginning completion dates	_____	_____
Date SIs, SSIs, Group No. or U.S.S. No. and State	_____	_____
BLM/FS/State Contract No., if applicable	_____	_____
Correct Acceptance Certificate	_____	_____
Date Assignment Instructions or Notice to Proceed on Plat Only	_____	_____
Reviewer Initials plat	_____	_____
Total Area for U.S. Surveys, Lat., Long., NAD 1927	_____	_____
Review Plat Memorandum	_____	_____
Submerged Lands Statement	_____	_____

ABBREVIATED REVIEWER CHECK LISTS  
FIELD NOTES

\*Items that are the responsibility of the Editorial Assistant (922) on work performed by BLM surveyors.

Title Page

- ( ) Description of Surveys complete:  
Tp. ( ) Rg. ( ) Mer. ( ) State ( ) U.S.S. ( )
- ( ) Surveyor's name and title
- ( ) Date of SI/SSIs. Approval date of  
SIs/SSIs.
- ( ) Gp. No. correct ( ) BLM/FS Contract No. and award date ( )  
U.S. Survey No. ( )
- ( ) Dates of Assignment Instructions
- ( ) Notice to Proceed
- ( ) Date survey commenced Completed
- ( ) Geographic Position - U.S. Surveys Only
- \*( ) Check index to agree with page numbers.

Introductory Paragraphs

- ( ) Description of survey matches title page.
- ( ) History complete - checked against original documents.
- ( ) Reference to Manual and Special Instructions.
- ( ) Method used to establish direction of survey lines.
- ( ) Statement concerning search for intervening corners (Dep. Resurveys)
- ( ) Method of meanders if hard copy meanders are included
- ( ) Statement when utilizing protracted corner positions.
- ( ) Geographic coordinates of points in survey, how determined and NAD 1927.
- ( ) Mean magnetic declination and how determined.
- ( ) Preliminary Statement (when necessary)

Body of Notes

- \*( ) Page Numbers
- \*( ) Headings describe survey line/lot covered on first line of page.
- ( ) Line description at beginning of each line.
- ( ) Name of previous surveyor and year of survey (resurveys only)
- ( ) Notes in proper order. (See Field Survey Handbook)
- ( ) Topo calls - check against original record (resurveys).
- \*( ) Lines across page as needed.
- ( ) All previously established corners accounted for (resurveys)
- ( ) Improvements
- ( ) All control stations used are tied
- ( ) U.S. Survey lots tied together
- ( ) Townships have inholdings tied
- ( ) Land, soil, timber description at end of each rectangular survey mile.



Lotting

- ( ) Compare land status with lotting
- \*( ) Check areas of new lots
- \*( ) Check for repetition of lot Nos.
- \*( ) Compare lot Nos. with previous plats
- \*( ) Sequence of lot Nos.
- ( ) Check proportions
- ( ) Check parenthetical distances
- \*( ) Section numbers complete and proper sequence
- ( ) Compare with plats of previous or concurrent surveys having common lines
- ( ) Check township, section, and/or lot closures (U.S. Surveys)
- ( ) Structures and topography if needed
- \*( ) Total area surveyed at bottom of plat (original surveys)

Plat Memorandum

\*Items that are the responsibility of the Editorial Assistant (922) on work performed by BLM Surveyors.

- ( ) History of previous surveys or reference to history in Field Notes
- \*( ) Description of survey or resurvey agrees with title page of notes
- \*( ) Name of Surveyor(s) and title
- \*( ) Beginning/completion dates
- \*( ) Date SIs, SSIs, Group No. or U.S.S. No. and State
- ( ) BLM/FS/State Contract No., if applicable.
- \*( ) Correct Acceptance Certificate
- ( ) Date Assignment Instructions or Notice to Proceed on Plat Only
- ( ) Reviewer Initials plat
- ( ) Total Area for U.S. Surveys, Lat., Long., NAD 1927
- ( ) Review Plat Memorandum
- \*( ) Submerged Lands Statement
- ( ) On "monumentation jacket" style projects, statement on technology used to establish corners and agencies that established the horizontal control.

9640 \_\_\_\_\_ (922)  
USS No. \_\_\_\_\_,  
AK

DELIVERY NOTICE

CRT Operator's Initials (\_\_\_\_\_)

Attention: Deputy State Director for Cadastral Survey (920)

Action: Delivery of Final Returns -  
U.S. Survey No. \_\_\_\_\_, Alaska

Date: \_\_\_\_\_

Final returns of subject survey are hereby delivered for your consideration and acceptance.

Remarks:



ACCEPTANCE NOTICE

CRT Operator's Initials (\_\_\_\_\_)

The above-noted final returns are hereby accepted.

Accepted: \_\_\_\_\_

For the Director

\_\_\_\_\_  
Deputy State Director for Cadastral Survey, Alaska



SUPPLEMENTAL PLAT MEMORANDUM  
EXAMPLE

This supplemental plat of section 28, Township 29 North, Range 5 West, Seward Meridian, showing amended lotting created by the segregation of U.S. Survey No. 8506 is based upon the plat of Township 29 North, Range 5 West, Seward Meridian, Alaska, accepted June 30, 1972, and the plat of U.S. Survey No. 8506 accepted February 7, 1986.

Acceptance of the survey does not purport to transfer any interest in submerged lands to which the State of Alaska is entitled under the Equal Footing Doctrine and Section 6(m) of the Alaska Statehood Act, P.L. 85-508, notwithstanding the use, location, or absence of meander lines to depict water bodies.

UNITED STATES DEPARTMENT OF THE INTERIOR  
BUREAU OF LAND MANAGEMENT  
Anchorage, Alaska

This supplemental plat, showing amended lottings, is based upon the official records, and having been correctly prepared in accordance with the regulations of this Bureau, is hereby accepted.

For the Director

\_\_\_\_\_  
Date

Deputy State Director for Cadastral Survey,  
Alaska

SUPPLEMENTAL PLAT MEMORANDUM  
EXAMPLE

This supplemental plat of Township 30 North, Range 5 West, Seward Meridian, showing the exclusion of U.S. Survey No. 7418 and the beds of meanderable water, is based upon the plat of Township 30 North, Range 5 West, Seward Meridian, Alaska, accepted August 29, 1978, and the plat of U.S. Survey No. 7418 accepted December 18, 1984.

Original Net Area of Township	22,619.54 Acres
Exclusions:	
Chulitna River	1,099.00 Acres
Tokichitna River	99.00 Acres
Coffee River	36.00 Acres
U.S. Survey No. 7418	78.96 Acres
Total Exclusions:	1,312.96 Acres
Adjusted Net Area of Township	21,306.58 Acres

Acceptance of the survey does not purport to transfer any interest in submerged lands to which the State of Alaska is entitled under the Equal Footing Doctrine and Section 6(m) of the Alaska Statehood Act, P.L. 85-508, notwithstanding the use, location, or absence of meander lines to depict water bodies.

UNITED STATES DEPARTMENT OF THE INTERIOR  
BUREAU OF LAND MANAGEMENT  
Anchorage, Alaska

This supplemental plat is based upon the official records and, having been correctly prepared in accordance with the regulations of this Bureau, is hereby accepted.

For the Director

\_\_\_\_\_  
Date

Deputy State Director for Cadastral Survey,  
Alaska

SUPPLEMENTAL PLAT MEMORANDUM  
EXAMPLE

This supplemental plat of section 13, Township 1 North, Range 13 West, Seward Meridian, shows the amended lotting of original Lot 1 creating Lot 3, which represents Tract C of the State of Alaska Engineering Plat File No. 58-38 and is based upon the plat of Township 1 North, Range 13 West, Seward Meridian, Alaska, accepted September 13, 1921, and the State of Alaska Engineering Plat File No. 58-38 approved May 18, 1970.

Acceptance of the survey does not purport to transfer any interest in submerged lands to which the State of Alaska is entitled under the Equal Footing Doctrine and Section 6(m) of the Alaska Statehood Act, P.L. 85-508, notwithstanding the use, location, or absence of meander lines to depict water bodies.

UNITED STATES DEPARTMENT OF THE INTERIOR  
BUREAU OF LAND MANAGEMENT  
Anchorage, Alaska

This supplemental plat, showing amended lotting, is based upon the official records and records of the State of Alaska and, having been correctly prepared in accordance with the regulations of this Bureau, is hereby accepted.

For the Director

\_\_\_\_\_  
Date

Deputy State Director for Cadastral Survey,  
Alaska

SUPPLEMENTAL PLAT MEMORANDUM  
EXAMPLE

This supplemental plat of U.S. Survey No. 5344, showing the subdivision of original Lot 6 into Lots 11 and 12, is based upon the plat of U.S. Survey No. 5344, Alaska, accepted November 24, 1980.

Acceptance of the survey does not purport to transfer any interest in submerged lands to which the State of Alaska is entitled under the Equal Footing Doctrine and Section 6(m) of the Alaska Statehood Act, P.L. 85-508, notwithstanding the use, location, or absence of meander lines to depict water bodies.

UNITED STATES DEPARTMENT OF THE INTERIOR  
BUREAU OF LAND MANAGEMENT  
Anchorage, Alaska

This supplemental plat is based upon the official records and, having been correctly prepared in accordance with the regulations of this Bureau, is hereby accepted.

For the Director

\_\_\_\_\_  
Date

Deputy State Director for Cadastral Survey,  
Alaska

SUPPLEMENTAL PLAT MEMORANDUM  
EXAMPLE

This supplemental plat of section 9, Township 15 North, Range 1 West, Seward Meridian, showing a subdivision of original Lots 158 and 167 is based upon the township plats of Township 15 North, Range 1 West, Seward Meridian, Alaska, accepted June 11, 1951, and May 13, 1955; the supplemental plat of section 9, accepted November 6, 1979; and the deeds to parcels of land transferred from original patentees to succeeding landowners.

UNITED STATES DEPARTMENT OF THE INTERIOR  
BUREAU OF LAND MANAGEMENT  
Anchorage, Alaska

This supplemental plat, showing amended lottings, is based upon the official records and, having been correctly prepared in accordance with the regulations of this Bureau, is hereby accepted.

For the Director

\_\_\_\_\_  
Date

Deputy State Director for Cadastral Survey,  
Alaska

AMENDED PLAT MEMORANDUM  
EXAMPLE

This amended plat of sections 16, 20, 21, 22, 27, 28, 29, 32, 33, and 34, Township 8 South, Range 17 East, Kateel River Meridian, revises the hydrography, deletes the areas previously identified as meanderable water, and shows amended lottings created by the segregation of U.S. Survey Nos. 7866, 7842, 7415, 7461, 7516, 8633, and 8022. These revisions are based upon the plat of Township 8 South, Range 17 East, Kateel River Meridian, Alaska, accepted July 4, 1970; the plat of U.S. Survey No. 7866 accepted April 10, 1985; the plat of U.S. Survey No. 7842 accepted May 10, 1985; the plat of U.S. Survey No. 7415 accepted May 10, 1985; the plat of U.S. Survey No. 7461 accepted May 16, 1985; the plat of U.S. Survey No. 7516 accepted December 19, 1986; the plat of U.S. Survey No. 8633 accepted November 4, 1987; and the plat of U.S. Survey No. 8022 accepted February 22, 1988.

Acceptance of the survey does not purport to transfer any interest in submerged lands to which the State of Alaska is entitled under the Equal Footing Doctrine and Section 6(m) of the Alaska Statehood Act, P.L. 85-508, notwithstanding the use, location, or absence of meander lines to depict water bodies.

UNITED STATES DEPARTMENT OF THE INTERIOR  
BUREAU OF LAND MANAGEMENT  
Anchorage, Alaska

This amended plat is based upon the official records and, having been correctly prepared in accordance with the regulations of this Bureau, is hereby accepted.

For the Director

\_\_\_\_\_  
Date

Deputy State Director for Cadastral Survey,  
Alaska



# United States Department of the Interior

## BUREAU OF LAND MANAGEMENT

Alaska State Office  
701 C Street, Box 13  
Anchorage, Alaska 99513-0099



IN REPLY REFER TO

9600 (961)

August 29, 1988

Instruction Memorandum No. AK 88-268  
Expires 09/30/89

To: DM's, DSD's, SC's

From: State Director, Alaska

Subject: Navigable Waters and Survey Platting for State and ANCSA Conveyances

The attached procedures are provided as guidance in processing conveyances through the patent plan process.

Robert W. Arndorfer  
Deputy State Director for Conveyance  
Management

- 1-Attachment:
- 1-Navigable Waters & Survey  
Platting Procedures (6 pp)

**Subject: Navigable Waters and Survey Platting for State and ANCSA Conveyances.**

The purpose of this memo is to clarify and identify the process of identifying a land description and acreages chargeable toward land entitlements under the Alaska Statehood Act and the Alaska Native Claims Settlement Act to be used in issuing final patents. The full implementation of these two Acts will result in approximately 150 million acres being patented to the State or Native Corporations. To issue patent, a survey must be provided by BLM's Cadastral Survey (920). Since very few acres were actually surveyed at the time these two acts were passed, it was recognized that this process would take years to complete. In order to expedite conveyances of unsurveyed lands, the process of issuing tentative approvals to the State of Alaska and Interim Conveyances to the Native Corporations was developed. In addition, the policies and procedures for adjudicating and surveying these claims have been evolving over the years. Therefore, the adjudicative and survey process needed to produce the resulting patents on TA'd and IC'd lands may vary depending on the standards utilized at the time of conveyance.

The following processes are identified as guidelines in the Patent plan process:

**A. State Conveyances:**

The MOA of 1984, between the U.S. Department of Interior and State of Alaska implementing the 1983 Submerged Lands Policy established the Bureau of Land Management Manual of Survey Instructions, 1973 (The Manual) as the basis for determining acreage chargeability. The following categories are discussed:

1. For any approved plats of survey on which patent was issued to the State prior to December 5, 1983, and meanderable water bodies were not segregated but were calculated in the acreage, the chargeable acreage may be recalculated upon the states request and at the State's expense. The following procedures will be utilized after the state initiates the action.
  - a. The BLM Cadastral Survey (920) will not make any adjustments or add any notations to the plat of survey.
  - b. The BLM Navigability Section (961) will not make a navigability determination regardless whether or not one had been made prior to issuance of patent.
  - c. To recalculate acreages the State will use the hydrography shown on approved plats of survey except in the case of identified gross error or where a patent was issued using approved protraction surveys. Any recalculation on protected survey areas that are based on navigability will be approved by BLM (961).
  - d. BLM (920) will verify the State's calculations and notify BLM Conveyances (960) by memo. BLM (960) will note the records (Case file and AALMRS) accordingly.
  - e. BLM (960) will not issue a corrected patent. Instead, Replacement acreage will be conveyed by BLM (960) from existing selections prioritized by the State.



2. For any plat of survey approved prior to December 5, 1983 on which patent will be issued, and meanderable water bodies were not segregated from the survey, the acreage of water bodies which meet the meanderability criteria appearing on the plat shall be calculated by the BLM (920) and not charged against the State. The following procedures will be utilized;

- a. The BLM (920) will not make any adjustments, additions, or deletions of water bodies on the plat of survey for the express purpose of recalculating chargeable acreage, except in the case of gross error.
- b. If BLM (961) has made a navigability determination since 1978, BLM will not make another determination. However, where BLM has not made a determination, BLM (961) will make a navigability determination only for any single line streams (less than 3 chains wide) and lakes less than 50 acres in size appearing on the approved plat of survey.
- c. In response to BLM (960)'s request, BLM (920) will prepare an amended <sup>1</sup> plat of survey and meander any navigable waters on townships where additional inholding surveys are required before patent issues. All meanderable waters will be segregated from the plat of survey according to The Manual.
- d. The BLM (920) will not prepare a supplemental <sup>2</sup> or amended plat on townships where no inholding surveys are required. The acreage of meanderable and navigable water bodies appearing on the approved plat of survey will be calculated by BLM and the adjusted acreages depicted on the plat of survey. These plats are referred to as "annotated plats"<sup>3</sup>.
- e. The BLM (960) will issue patent based upon a supplemental, amended, or annotated plat prepared under this criteria.

3. For any plat of survey approved after December 5, 1983, and patent has not been issued, water bodies shall be meandered and segregated from the survey in accordance with the principles of The Manual. The following procedures will be utilized:

- a. If the BLM (961) has made a navigability determination since 1978, it is not required to make another determination. If a determination has not been made since 1978, the BLM will make a navigability determination for streams less than three chains wide and lakes less than fifty acres in size. Note: The BLM (960) shall issue a redetermination for townships with ANCSA lands to obtain a more accurate survey plat.
- b. The BLM (960) will issue patent based upon the plat of survey or amended plat of survey prepared under this criteria.

**B. ANCSA Conveyances:****1. Selected lands****a. Navigability**

(1) On lands prioritized for conveyance but not adequately surveyed to go directly to patent (i.e., the presence of unsurveyed inholdings), an IC will be issued. As per DSD's memo of November 20, 1987, a statement will be made in the IC document that excludes navigable waters, if any, from the IC. This allows BLM to include a navigability report with the request for survey or amended/supplemental plat preparation.

(2) If the selected lands are within a patent plan window, a navigability report will be prepared by BLM (961) and submitted to BLM (920) using the current criteria for the purpose of plat preparation even though an IC or patent is not scheduled at this time. NOTE: Requests for navigability determinations must still be made for ANCSA 14h(1) selections.

(3) On lands prioritized for conveyance which are adequately surveyed to go directly to patent, the Branch Chief, (960) will request BLM (961) to issue a navigability determination unless BLM (961) had previously issued a determination under current criteria.

**b. Survey Platting**

(1) If the lands are unsurveyed, BLM (920) prepares a survey plat using the current navigability determination and The Manual.

(2) If the lands are adequately surveyed to issue patent except that water lots are depicted (ANCSA SURVEYS), the respective Branch Chief (960) will contact the Village and/or Regional Corporations to confirm the acceptance of patent based on the plats as drawn. The plats will also be annotated by BLM (920) in the upper left hand corner of the plat outside the margin, with the following statement: "Water lot designations are to facilitate identification and acreage computation only and are not intended to fix boundaries or alter riparian entitlement." Any concerns that the Village or Regional Corporation has with hydrography as depicted on the plat must be identified by the Corporation as a gross error and evidence must be provided to verify error before plats are amended.

(3) If any approved plat is adequately surveyed to issue patent, except that a navigable single line stream (less 3 chains wide) was not segregated and upland acreage calculated, BLM (920) will prepare an annotated plat recalculating the acreage. The annotated plat will have notations that refer to the water body that is excluded from the plat and the acreages deducted from each section traversed by the water body.

(4) If navigable streams or lakes are not meandered and segregated on an existing survey plat, an amended plat will be prepared excluding the submerged land acreage.

## 2. IC'd Lands

### a. Navigability

(1) If a DIC was issued following the guidance given in the DSD's memo of November 20, 1987, and the IC stated that navigable waters, if any, are excluded from the IC, the BLM (961) will do a determination at the time of survey prior to issuance of patent, normally in conjunction with the patent plan process.

(2) If a navigability statement was made in the IC document that specifically identified the navigable water bodies, or excluded navigable waters by reference to maps in easement files, BLM (961) will identify these water bodies in its navigability report to BLM (920). BLM will not issue amended navigability determinations unless permission is obtained by the respective Branch Chief (960) from the affected Village and/or Regional Corporation. See attached sample form.

(3) If the corporations so request, BLM (961) will issue amended navigability determinations specifically addressing IC'd lands. The results of a new navigability determination made in accordance with the current criteria will be addressed as per 43 CFR 1865.1-3. A Notice issued by BLM (960) will serve as a bridge in the "Correction of Conveyance Documents" procedure. The subsequent "Patent" will be the correcting document and, therefore, a corrected IC will not be required.

### b. Survey Platting

(1) If the lands are unsurveyed, a survey plat is prepared using BLM (961)'s navigability report in the IC and The Manual, unless permission is obtained by the respective Branch Chief (960) from the Village and/or Regional Corporations to issue navigability determinations in accordance with the current criteria. If permission is granted, it will supplant the IC in regard to navigable water bodies.

(2) If the IC'd lands are adequately surveyed to issue patent except that water lots are depicted (ANCSA SURVEYS), the respective Branch Chief (960) will contact the Village and/or Regional Corporations to confirm the acceptance of patent based on the plats as drawn. The plats will also be annotated in the upper left hand corner of the plat outside the margin, with the following statement: "Water lot designations are to facilitate identification and acreage computation only and are not intended to fix boundaries or alter riparian entitlement." Any concerns that the Village or Regional Corporation has with hydrography as depicted on the plat must be identified by the Corporation as a gross error and evidence must be provided to verify error before plats are amended.

(3) If any approved survey plat is adequate to issue patent, except that the IC document or subsequent navigability report in accordance with the current criteria identifies single line streams (less than 3 chains wide) as navigable. BLM (920) will make a plat annotation recalculating the acreage. The annotated plat will have notations that refer to the water body that is excluded from the plat and the acreages deducted from each section traversed by the water body.

(4) If the IC or new navigability report identifies streams not depicted on the survey plat, BLM (920) will prepare an amended plat segregating the water body and excluding the acreage.

### 3. Patented Lands

#### a. Navigability

BLM (961) will not issue a navigability report unless and until a request/permission is received from the affected Village and/or Regional Corporations. Upon such request the Branch Chief (960) will issue a notice addressing the results of any new navigability determination conforming to the current criteria. It should be noted that prior to the 1983 Submerged Lands Policy, some patents were issued which included an acreage chargeability for submerged lands that were meanderable but not tidal or navigable according to current criteria.

#### b. Survey Platting

(1) No new platting or marginal notations will be made on survey plats which describe patented lands. However, the respective 960 Adjudication Branch Chief will submit to BLM 920 a request to recalculate the acreage of water bodies identified as being 1) depicted, but not segregated on the survey plat and/or 2) navigable water, but not segregated on the survey plat. The DSD (920) will submit a memo to DSD (960) stating what adjusted acreage figures by section should be used for each affected patent document. The respective 960 Adjudication Branch Chief will inform the patentee, by Notice, as to the acreage differences. This notice will also state that replacement acreage will be conveyed from among existing selections made by the corporations or withdrawn and selected according to Section 1410 of ANILCA for underselected corporations.

<sup>1</sup> An amended plat is described as a plat or which the acreages are changed due to a change in the hydrography as depicted, or due to an error in platting.

<sup>2</sup> A supplemental plat is described as a plat prepared entirely from office records to show a revised subdivision of one or more sections without changes in the section boundaries and without modification of the record.

<sup>3</sup> An annotated plat is described as a plat that contains a notation that will show a new acreage or other correction of the records and is depicted on the survey plat within the margin, or outside the margin.



# United States Department of the Interior

BUREAU OF LAND MANAGEMENT  
WASHINGTON, D.C. 20240



April 5, 1989

IN REPLY REFER TO:  
9630 (720)

Instruction Memorandum No. 89- 421  
Expires 9/30/90

ACTION - COPY

To: State Directors  
From: Director  
Subject: Cadastral Survey Records

The Federal Records Act, 44 U.S.C. 21, 29, 31 and 33 mandate the creation and preservation of those records necessary to document Federal activities. Cadastral Survey records are vital to the mission of the Bureau. They are also of permanent value to the Federal Government; they must exist for all time. With the creation of cadastral survey records, the responsibility for the maintenance and preservation of these records becomes an immediate function of the Bureau of Land Management. To a degree, the Division of Cadastral Survey is specifically obligated to see that this responsibility is met. Accordingly, the subject of cadastral records has been analyzed and discussed at nearly all cadastral workshops and seminars in recent years; however, conflicting opinions have been obstacles in creating final policies or resolving questions relating to most aspects of this important subject.

Four such aspects that have been of primary concern are:

- I. Notations made on official survey plats after approval.
- II. Machine copying versus carbon paper for duplicate field notes.
- III. The retention and disposition of Cadastral Survey Plats and Field Notes.
- IV. The preservation of old and newly created original plats.

The purpose of this memorandum is to issue the official policy of the Bureau on items I and II, and to inform you of what measures are being taken to resolve or implement items III and IV. This memorandum is in agreement with the attached memorandum from the Assistant Solicitor, Land Use and Realty, dated June 25, 1987.

## I. NOTATIONS MADE ON OFFICIAL SURVEY PLATS AFTER APPROVAL

The Bureau does not support the idea of placing notations on cadastral survey plats to alter, correct, or amend the official record. It is our opinion that the only plat notation that should ever be needed is one that suspends or cancels a plat when a corrective resurvey is

pending, or one that lifts such a suspension when the corrective plat is accepted. Errors, if extensive enough to materially affect the Survey Examination process, are not to be corrected on the original plat.

930  
932  
934  
936  
938  
940  
942  
944  
946  
948  
950  
952  
954  
956  
958  
960  
962  
964  
966  
968  
970  
972  
974  
976  
978  
980  
982  
984  
986  
988  
990  
992  
994  
996  
998  
1000  
1002  
1004  
1006  
1008  
1010  
1012  
1014  
1016  
1018  
1020  
1022  
1024  
1026  
1028  
1030  
1032  
1034  
1036  
1038  
1040  
1042  
1044  
1046  
1048  
1050  
1052  
1054  
1056  
1058  
1060  
1062  
1064  
1066  
1068  
1070  
1072  
1074  
1076  
1078  
1080  
1082  
1084  
1086  
1088  
1090  
1092  
1094  
1096  
1098  
1100  
1102  
1104  
1106  
1108  
1110  
1112  
1114  
1116  
1118  
1120  
1122  
1124  
1126  
1128  
1130  
1132  
1134  
1136  
1138  
1140  
1142  
1144  
1146  
1148  
1150  
1152  
1154  
1156  
1158  
1160  
1162  
1164  
1166  
1168  
1170  
1172  
1174  
1176  
1178  
1180  
1182  
1184  
1186  
1188  
1190  
1192  
1194  
1196  
1198  
1200  
1202  
1204  
1206  
1208  
1210  
1212  
1214  
1216  
1218  
1220  
1222  
1224  
1226  
1228  
1230  
1232  
1234  
1236  
1238  
1240  
1242  
1244  
1246  
1248  
1250  
1252  
1254  
1256  
1258  
1260  
1262  
1264  
1266  
1268  
1270  
1272  
1274  
1276  
1278  
1280  
1282  
1284  
1286  
1288  
1290  
1292  
1294  
1296  
1298  
1300  
1302  
1304  
1306  
1308  
1310  
1312  
1314  
1316  
1318  
1320  
1322  
1324  
1326  
1328  
1330  
1332  
1334  
1336  
1338  
1340  
1342  
1344  
1346  
1348  
1350  
1352  
1354  
1356  
1358  
1360  
1362  
1364  
1366  
1368  
1370  
1372  
1374  
1376  
1378  
1380  
1382  
1384  
1386  
1388  
1390  
1392  
1394  
1396  
1398  
1400  
1402  
1404  
1406  
1408  
1410  
1412  
1414  
1416  
1418  
1420  
1422  
1424  
1426  
1428  
1430  
1432  
1434  
1436  
1438  
1440  
1442  
1444  
1446  
1448  
1450  
1452  
1454  
1456  
1458  
1460  
1462  
1464  
1466  
1468  
1470  
1472  
1474  
1476  
1478  
1480  
1482  
1484  
1486  
1488  
1490  
1492  
1494  
1496  
1498  
1500  
1502  
1504  
1506  
1508  
1510  
1512  
1514  
1516  
1518  
1520  
1522  
1524  
1526  
1528  
1530  
1532  
1534  
1536  
1538  
1540  
1542  
1544  
1546  
1548  
1550  
1552  
1554  
1556  
1558  
1560  
1562  
1564  
1566  
1568  
1570  
1572  
1574  
1576  
1578  
1580  
1582  
1584  
1586  
1588  
1590  
1592  
1594  
1596  
1598  
1600  
1602  
1604  
1606  
1608  
1610  
1612  
1614  
1616  
1618  
1620  
1622  
1624  
1626  
1628  
1630  
1632  
1634  
1636  
1638  
1640  
1642  
1644  
1646  
1648  
1650  
1652  
1654  
1656  
1658  
1660  
1662  
1664  
1666  
1668  
1670  
1672  
1674  
1676  
1678  
1680  
1682  
1684  
1686  
1688  
1690  
1692  
1694  
1696  
1698  
1700  
1702  
1704  
1706  
1708  
1710  
1712  
1714  
1716  
1718  
1720  
1722  
1724  
1726  
1728  
1730  
1732  
1734  
1736  
1738  
1740  
1742  
1744  
1746  
1748  
1750  
1752  
1754  
1756  
1758  
1760  
1762  
1764  
1766  
1768  
1770  
1772  
1774  
1776  
1778  
1780  
1782  
1784  
1786  
1788  
1790  
1792  
1794  
1796  
1798  
1800  
1802  
1804  
1806  
1808  
1810  
1812  
1814  
1816  
1818  
1820  
1822  
1824  
1826  
1828  
1830  
1832  
1834  
1836  
1838  
1840  
1842  
1844  
1846  
1848  
1850  
1852  
1854  
1856  
1858  
1860  
1862  
1864  
1866  
1868  
1870  
1872  
1874  
1876  
1878  
1880  
1882  
1884  
1886  
1888  
1890  
1892  
1894  
1896  
1898  
1900  
1902  
1904  
1906  
1908  
1910  
1912  
1914  
1916  
1918  
1920  
1922  
1924  
1926  
1928  
1930  
1932  
1934  
1936  
1938  
1940  
1942  
1944  
1946  
1948  
1950  
1952  
1954  
1956  
1958  
1960  
1962  
1964  
1966  
1968  
1970  
1972  
1974  
1976  
1978  
1980  
1982  
1984  
1986  
1988  
1990  
1992  
1994  
1996  
1998  
2000  
2002  
2004  
2006  
2008  
2010  
2012  
2014  
2016  
2018  
2020  
2022  
2024  
2026  
2028  
2030  
2032  
2034  
2036  
2038  
2040  
2042  
2044  
2046  
2048  
2050  
2052  
2054  
2056  
2058  
2060  
2062  
2064  
2066  
2068  
2070  
2072  
2074  
2076  
2078  
2080  
2082  
2084  
2086  
2088  
2090  
2092  
2094  
2096  
2098  
2100  
2102  
2104  
2106  
2108  
2110  
2112  
2114  
2116  
2118  
2120  
2122  
2124  
2126  
2128  
2130  
2132  
2134  
2136  
2138  
2140  
2142  
2144  
2146  
2148  
2150  
2152  
2154  
2156  
2158  
2160  
2162  
2164  
2166  
2168  
2170  
2172  
2174  
2176  
2178  
2180  
2182  
2184  
2186  
2188  
2190  
2192  
2194  
2196  
2198  
2200  
2202  
2204  
2206  
2208  
2210  
2212  
2214  
2216  
2218  
2220  
2222  
2224  
2226  
2228  
2230  
2232  
2234  
2236  
2238  
2240  
2242  
2244  
2246  
2248  
2250  
2252  
2254  
2256  
2258  
2260  
2262  
2264  
2266  
2268  
2270  
2272  
2274  
2276  
2278  
2280  
2282  
2284  
2286  
2288  
2290  
2292  
2294  
2296  
2298  
2300  
2302  
2304  
2306  
2308  
2310  
2312  
2314  
2316  
2318  
2320  
2322  
2324  
2326  
2328  
2330  
2332  
2334  
2336  
2338  
2340  
2342  
2344  
2346  
2348  
2350  
2352  
2354  
2356  
2358  
2360  
2362  
2364  
2366  
2368  
2370  
2372  
2374  
2376  
2378  
2380  
2382  
2384  
2386  
2388  
2390  
2392  
2394  
2396  
2398  
2400  
2402  
2404  
2406  
2408  
2410  
2412  
2414  
2416  
2418  
2420  
2422  
2424  
2426  
2428  
2430  
2432  
2434  
2436  
2438  
2440  
2442  
2444  
2446  
2448  
2450  
2452  
2454  
2456  
2458  
2460  
2462  
2464  
2466  
2468  
2470  
2472  
2474  
2476  
2478  
2480  
2482  
2484  
2486  
2488  
2490  
2492  
2494  
2496  
2498  
2500  
2502  
2504  
2506  
2508  
2510  
2512  
2514  
2516  
2518  
2520  
2522  
2524  
2526  
2528  
2530  
2532  
2534  
2536  
2538  
2540  
2542  
2544  
2546  
2548  
2550  
2552  
2554  
2556  
2558  
2560  
2562  
2564  
2566  
2568  
2570  
2572  
2574  
2576  
2578  
2580  
2582  
2584  
2586  
2588  
2590  
2592  
2594  
2596  
2598  
2600  
2602  
2604  
2606  
2608  
2610  
2612  
2614  
2616  
2618  
2620  
2622  
2624  
2626  
2628  
2630  
2632  
2634  
2636  
2638  
2640  
2642  
2644  
2646  
2648  
2650  
2652  
2654  
2656  
2658  
2660  
2662  
2664  
2666  
2668  
2670  
2672  
2674  
2676  
2678  
2680  
2682  
2684  
2686  
2688  
2690  
2692  
2694  
2696  
2698  
2700  
2702  
2704  
2706  
2708  
2710  
2712  
2714  
2716  
2718  
2720  
2722  
2724  
2726  
2728  
2730  
2732  
2734  
2736  
2738  
2740  
2742  
2744  
2746  
2748  
2750  
2752  
2754  
2756  
2758  
2760  
2762  
2764  
2766  
2768  
2770  
2772  
2774  
2776  
2778  
2780  
2782  
2784  
2786  
2788  
2790  
2792  
2794  
2796  
2798  
2800  
2802  
2804  
2806  
2808  
2810  
2812  
2814  
2816  
2818  
2820  
2822  
2824  
2826  
2828  
2830  
2832  
2834  
2836  
2838  
2840  
2842  
2844  
2846  
2848  
2850  
2852  
2854  
2856  
2858  
2860  
2862  
2864  
2866  
2868  
2870  
2872  
2874  
2876  
2878  
2880  
2882  
2884  
2886  
2888  
2890  
2892  
2894  
2896  
2898  
2900  
2902  
2904  
2906  
2908  
2910  
2912  
2914  
2916  
2918  
2920  
2922  
2924  
2926  
2928  
2930  
2932  
2934  
2936  
2938  
2940  
2942  
2944  
2946  
2948  
2950  
2952  
2954  
2956  
2958  
2960  
2962  
2964  
2966  
2968  
2970  
2972  
2974  
2976  
2978  
2980  
2982  
2984  
2986  
2988  
2990  
2992  
2994  
2996  
2998  
3000  
3002  
3004  
3006  
3008  
3010  
3012  
3014  
3016  
3018  
3020  
3022  
3024  
3026  
3028  
3030  
3032  
3034  
3036  
3038  
3040  
3042  
3044  
3046  
3048  
3050  
3052  
3054  
3056  
3058  
3060  
3062  
3064  
3066  
3068  
3070  
3072  
3074  
3076  
3078  
3080  
3082  
3084  
3086  
3088  
3090  
3092  
3094  
3096  
3098  
3100  
3102  
3104  
3106  
3108  
3110  
3112  
3114  
3116  
3118  
3120  
3122  
3124  
3126  
3128  
3130  
3132  
3134  
3136  
3138  
3140  
3142  
3144  
3146  
3148  
3150  
3152  
3154  
3156  
3158  
3160  
3162  
3164  
3166  
3168  
3170  
3172  
3174  
3176  
3178  
3180  
3182  
3184  
3186  
3188  
3190  
3192  
3194  
3196  
3198  
3200  
3202  
3204  
3206  
3208  
3210  
3212  
3214  
3216  
3218  
3220  
3222  
3224  
3226  
3228  
3230  
3232  
3234  
3236  
3238  
3240  
3242  
3244  
3246  
3248  
3250  
3252  
3254  
3256  
3258  
3260  
3262  
3264  
3266  
3268  
3270  
3272  
3274  
3276  
3278  
3280  
3282  
3284  
3286  
3288  
3290  
3292  
3294  
3296  
3298  
3300  
3302  
3304  
3306  
3308  
3310  
3312  
3314  
3316  
3318  
3320  
3322  
3324  
3326  
3328  
3330  
3332  
3334  
3336  
3338  
3340  
3342  
3344  
3346  
3348  
3350  
3352  
3354  
3356  
3358  
3360  
3362  
3364  
3366  
3368  
3370  
3372  
3374  
3376  
3378  
3380  
3382  
3384  
3386  
3388  
3390  
3392  
3394  
3396  
3398  
3400  
3402  
3404  
3406  
3408  
3410  
3412  
3414  
3416  
3418  
3420  
3422  
3424  
3426  
3428  
3430  
3432  
3434  
3436  
3438  
3440  
3442  
3444  
3446  
3448  
3450  
3452  
3454  
3456  
3458  
3460  
3462  
3464  
3466  
3468  
3470  
3472  
3474  
3476  
3478  
3480  
3482  
3484  
3486  
3488  
3490  
3492  
3494  
3496  
3498  
3500  
3502  
3504  
3506  
3508  
3510  
3512  
3514  
3516  
3518  
3520  
3522  
3524  
3526  
3528  
3530  
3532  
3534  
3536  
3538  
3540  
3542  
3544  
3546  
3548  
3550  
3552  
3554  
3556  
3558  
3560  
3562  
3564  
3566  
3568  
3570  
3572  
3574  
3576  
3578  
3580  
3582  
3584  
3586  
3588  
3590  
3592  
3594  
3596  
3598  
3600  
3602  
3604  
3606  
3608  
3610  
3612  
3614  
3616  
3618  
3620  
3622  
3624  
3626  
3628  
3630  
3632  
3634  
3636  
3638  
3640  
3642  
3644  
3646  
3648  
3650  
3652  
3654  
3656  
3658  
3660  
3662  
3664  
3666  
3668  
3670  
3672  
3674  
3676  
3678  
3680  
3682  
3684  
3686  
3688  
3690  
3692  
3694  
3696  
3698  
3700  
3702  
3704  
3706  
3708  
3710  
3712  
3714  
3716  
3718  
3720  
3722  
3724  
3726  
3728  
3730  
3732  
3734  
3736  
3738  
3740  
3742  
3744  
3746  
3748  
3750  
3752  
3754  
3756  
3758  
3760  
3762  
3764  
3766  
3768  
3770  
3772  
3774  
3776  
3778  
3780  
3782  
3784  
3786  
3788  
3790  
3792  
3794  
3796  
3798  
3800  
3802  
3804  
3806  
3808  
3810  
3812  
3814  
3816  
3818  
3820  
3822  
3824  
3826  
3828  
3830  
3832  
3834  
3836  
3838  
3840  
3842  
3844  
3846  
3848  
3850  
3852  
3854  
3856  
3858  
3860  
3862  
3864  
3866  
3868  
3870  
3872  
3874  
3876  
3878  
3880  
3882  
3884  
3886  
3888  
3890  
3892  
3894  
3896  
3898  
3900  
3902  
3904  
3906  
3908  
3910  
3912  
3914  
3916  
3918  
3920  
3922  
3924  
3926  
3928  
3930  
3932  
3934  
3936  
3938  
3940  
3942  
3944  
3946  
3948  
3950  
3952  
3954  
3956  
3958  
3960  
3962  
3964  
3966  
3968  
3970  
3972  
3974  
3976  
3978  
3980  
3982  
3984  
3986  
3988  
3990  
3992  
3994  
3996  
3998  
4000  
4002  
4004  
4006  
4008  
4010  
4012  
4014  
4016  
4018  
4020  
4022  
4024  
4026  
4028  
4030  
4032  
4034  
4036  
4038  
4040  
4042  
4044  
4046  
4048  
4050  
4052  
4054  
4056  
4058  
4060  
4062  
4064  
4066  
4068  
4070  
4072  
4074  
4076  
4078  
4080  
4082  
4084  
4086  
4088  
4090  
4092  
4094  
4096  
4098  
4100  
4102  
4104  
4106  
4108  
4110  
4112  
4114  
4116  
4118  
4120  
4122  
4124  
4126  
4128  
4130  
4132  
4134  
4136  
4138  
4140  
4142  
4144  
4146  
4148  
4150  
4152  
4154  
4156  
4158  
4160  
4162  
4164  
4166  
4168  
4170  
4172  
4174  
4176  
4178  
4180  
4182  
4184  
4186  
4188  
4190  
4192  
4194  
4196  
4198  
4200  
4202  
4204  
4206  
4208  
4210  
4212  
4214  
4216  
4218  
4220  
4222  
4224  
4226  
4228  
4230  
4232  
4234  
4236  
4238  
4240  
4242  
4244  
4246  
4248  
4250  
4252  
4254  
4256  
4258  
4260  
4262  
4264  
4266  
4268  
4270  
4272  
4274  
4276  
4278  
4280  
4282  
4284  
4286  
4288  
4290  
4292  
4294  
4296  
4298  
4300  
4302  
4304  
4306  
4308  
4310  
4312  
4314  
4316  
4318  
4320  
4322  
4324  
4326  
4328  
4330  
4332  
4334  
4336  
4338  
4340  
4342  
4344  
4346  
4348  
4350  
4352  
4354  
4356  
4358  
4360  
4362  
4364  
4366  
4368  
4370  
4372  
4374  
4376  
4378  
4380  
4382  
4384  
4386  
4388  
4390  
4392  
4394  
4396  
4398  
4400  
4402  
4404  
4406  
4408  
4410  
4412  
4414  
4416  
4418  
4420  
4422  
4424  
4426  
4428  
4430  
4432  
4434  
4436  
4438  
4440  
4442  
4444  
4446  
4448  
4450  
4452  
4454  
4456  
4458  
4460  
4462  
4464  
4466  
4468  
4470  
4472  
4474  
4476  
4478  
4480  
4482  
4484  
4486  
4488  
4490  
4492  
4494  
4496  
4498  
4500  
4502  
4504  
4506  
4508  
4510  
4512  
4514  
4516  
4518  
4520  
4522  
4524  
4526  
4528  
4530  
4532  
4534  
4536  
4538  
4540  
4542  
4544  
4546  
4548  
4550  
4552  
4554  
4556  
4558  
4560  
4562  
4564  
4566  
4568  
4570  
4572  
4574  
4576  
4578  
4580  
4582  
4584  
4586  
4588  
4590  
4592  
4594  
4596  
4598  
4600  
4602  
4604  
4606  
4608  
4610  
4612  
4614  
4616  
4618  
4620  
4622  
4624  
4626  
4628  
4630  
4632  
4634  
4636  
4638  
4640  
4642  
4644  
4646  
4648  
4650  
4652  
4654  
4656  
4658  
4660  
4662

ground survey, should be rectified by a corrective resurvey. Errors of a minor nature should not require a plat notation, as they usually do not materially affect the survey.

### POLICY

In the event that official survey/resurveys require corrective action, the procedural steps that must be followed are listed below; additional measures for each situation may be necessary, depending on individual office structures. Included are steps for situations involving corrective field surveys or resurveys and corrections to the official field returns by means of a new record.

#### A. CORRECTIONS TO OFFICIAL FIELD RETURNS REQUIRING FIELD WORK (CORRECTIVE RESURVEY, ETC.)

Any official returns that require corrections involving line retracement or moving official corner monuments, will always result in a corrective resurvey plat and/or set of field notes (even if the record doesn't change) which, when accepted or approved, will supersede the corrected portion of the official record.

1. Preliminary to any field work, authorization must be issued in the form of a memorandum from the Director (by the State Office Chief Cadastral Surveyor) detailing the problem and specifying whether special instructions are to be prepared (for a corrective resurvey, etc.) and whether the affected plat is to be suspended. A copy of the authorizing memorandum is to be placed in the appropriate survey Group file. (Example memo: Attachment "A").
2. If a plat suspension is appropriate, a notation is to be inked on the original plat, inside the border, referencing the date and file number of the authorization memorandum. (See example memo "A").
3. A copy of the authorizing memorandum is to be sent to the Eastern States Deputy State Director for Cadastral Surveys and Support Services (DSD-ES) so that the same notation can be placed on the duplicate plat in their custody. The DSD-ES shall have the same suspension notation inked onto the duplicate plat.
4. A copy of the authorizing memorandum is to be sent to the Title Records Section and the suspension notation shall be noted on the appropriate title records.

5. Upon acceptance of the corrective resurvey plat, a second memorandum is issued from the Director (by the State Office Chief, Cadastral Surveyor), authorizing the removal of the plat suspension by inking a statement to that effect below the "suspension" statement. (Example memo: Attachment "B").
6. A copy of the suspension removal memorandum is to be sent to the DSD-ES so that the same notation can be placed on the duplicate plat. The DSD-ES shall have the same suspension removal statement inked onto the duplicate plat.
7. Each time the original plat is annotated, it is sent through the normal filming (microfilm, aperture card, etc.) and distribution process. No notation will be made to records not in the custody of the BLM.

#### B. CORRECTIONS TO FIELD RETURNS FOR ERRONEOUS BEARINGS OR DISTANCES

Erroneous bearings and/or distances may be found in accepted returns that do not materially affect the ground survey, thereby not falling into category I. A., above. Such errors may be corrected with a supplemental plat.

1. Authorization must be issued by a memorandum from the Director (by the State Office Chief Cadastral Surveyor), detailing what error(s) exists and indicating that a supplemental plat is to be prepared. The memorandum will specify what portion of the erroneous record is to be amended, what the correct data should be, and what the amended record is to include. The record copy of the authorizing memorandum is to be filed in the official survey file.
2. A supplemental plat is prepared in accordance with the authorization memorandum. A reference to the authorization memorandum and to the record being corrected shall be included in the marginal statement.
3. Upon acceptance, the plat will be filed, filmed, and distributed in accordance with usual procedures.

#### II. MACHINE COPYING VERSUS CARBON PAPER FOR DUPLICATE FIELD NOTES

For some time now, uncertainty has existed as to what process or methods best meets the legal and archival quality requirements for producing official duplicate cadastral field notes. The two methods most often discussed have been carbon paper imprint and the photocopy (Xerox) machine.

In the past, the carbon paper method was completely accepted by Cadastral Survey as a means of producing an exact copy, while the photocopy method was not, for one reason or another. With the improvement of office equipment technology, today it's generally thought that either process can produce a copy that meets legal requirements, providing that the office equipment used is up to acceptable standards.

The archival quality of the duplicate copy probably has been given less consideration by Cadastral Survey than how the duplicate copy is produced, even though their importance is relatively equal. Consequently, it is apparent that emphasis on the selection and use of archival quality paper needs to be increased.

#### POLICY

Considering the above, both carbon copies and photocopying (Xerox) will be considered acceptable for duplicate field notes, provided that the following requirements or conditions are met.

- A. The paper used for the duplicate field notes must be of Type 1, Grade 1 quality, which provides maximum permanence under ordinary use and satisfies archival requirements.
- B. If used, the copying machine must be maintained so that the image is "properly fused" at all times when duplicate field notes are produced. The term "properly fused" means the machine will correctly melt or unite the image to the paper. A common test for this is to immediately rub a finger over the reproduced image. If the machine is properly adjusted, no smudges will occur. Any sign of a smudge indicates the reproduced image is not properly fusing to the paper, consequently, the machine needs adjustment.

### III. THE RETENTION AND DISPOSITION OF CADASTRAL SURVEY PLATS AND FIELD NOTES

The Bureau's policy regarding retention and disposition of the cadastral survey plats and field notes will be developed by an evaluation team pursuant to the Bureau's response to the National Archives and Records Administration evaluation of our permanent records.



#### IV. THE PRESERVATION OF OLD AND NEW ORIGINAL SURVEY PLATS

There is no question that the original cadastral survey plats are vital, one-of-a-kind, and historical documents. The preservation of these essential records is something that has often been thought about, but to date has not been undertaken with any kind of a serious effort.

From the time that an original plat is prepared, it is going through a gradual but continuous deterioration process that over time will destroy it. Archivists refer to this natural destruction as the "creeping disaster." It is clear to this office that preservation measures are long overdue and must now be implemented so that these records will be available for future generations.

The microfilming of the original plats helps to preserve them because this process theoretically causes the record to be removed from use, which slows down, but does not stop the deterioration process. However, while microfilming does offer image retention and provides a security backup copy, it does not provide original seals and signatures and does not have the forensic or historical value of the original document. In addition, the original quality, background densities, chemical processing, storage conditions, and handling of silver halide film must be rigidly controlled to retain their archival status.

The Branch of Records and Library (SC-324), Denver Service Center, has performed some preliminary studies on the subject of survey plat preservation. Their initial finding is that lamination, using a clear polyester film, provides the most practical and effective means of preserving the original cadastral plats. They are very much willing to work with Cadastral Survey on a plat preservation project, and are optimistic that positive results can be achieved. The Bureau's policy regarding this issue will be developed by an evaluation team pursuant to the Bureau's response to the National Archives and Records Administration evaluation of our permanent records.

If there are any questions or comments on the above, please address them to our Division of Cadastral Survey.

#### 3 Attachments

- 1 - Solicitor's memo dated June 25, 1987 (1 w/attachments) Support Services
- 2 - Example Memo-A (1 pp)
- 3 - Example Memo-B (1 pp)

  
John J. Moeller  
Acting Assistant Director,







# United States Department of the Interior

BUREAU OF LAND MANAGEMENT  
ALASKA STATE OFFICE  
222 W. 7th Avenue, #13  
ANCHORAGE, ALASKA 99513-7599



9650 (922)

## Memorandum

To: Chief of Title and Land Status (973C)  
From: Chief, Branch of Examination and Records (AK-922)  
Subject: Plat Distribution and Filing Instructions

The aperture cards of the following described original plats, accepted on the dates noted, are transmitted for filing.

Also transmitted are the field notes for the surveys noted with an asterisk.

These plats will be regarded as officially filed on February 7, 1990.

<u>U.S.S. No.</u>	<u>ACCEPTED</u>	<u>PURPOSE</u>	<u>APPLICANT</u>	<u>SERIAL No.</u>	<u>TWP. RNGE. ME</u>
*2425	01/23/90	Mineral Survey			
*2469	01/23/90	Mineral Survey			
*2504	01/12/90	Mineral Survey			
Group 262	01/29/90	Amended Supplemental			50S, 78W, SM
Group 266	01/29/90	Supplemental			61S, 94W, SM
*Group 313	01/30/90				22S, 49W, SM
*Group 457	01/23/90	Subdivision			3S, 5W, FM
2413	01/29/90	Supplemental			
6146	01/30/90	Native Allot	Lorrie Bartlett	A-60712	22S, 49W, SM
*8666	01/29/90	Mineral Segre- gation Survey	Mining Claim BBK #1 Mining Claim BBK #2 Mining Claim BBK #4	AA-30237 L-1 AA-31337 L-2 AA-30239 L3&4	4N, 1E&1W, SM

\*8835 Alaska State Office  
Survey Examination and Distribution Handbook  
Air Navigation Site 164

4/02/90 27N, 22E, CRM

-2-

<u>U.S.S. No.</u>	<u>ACCEPTED</u>	<u>PURPOSE</u>	<u>APPLICANT</u>	<u>SERIAL No.</u>	<u>TWP. RNGE.</u>
*9016	01/17/90	AK RR ROW	State of Alaska		13N, 4W, SM
*9393	01/18/90	Native Allot	Lucy John L-1 Allen John L-2 Isabel Hjelm L-3 Annie Simon L-4 Charles E. Frank L-5 Henry Moses L-6	F-17767 F-26050 A F-18269 F-14047 F-13811 B F-14799	12N, 8W, FM

Please return a copy of this memorandum showing receipt of the aforementioned aperture cards and field notes to the Chief, Branch of Examination and Records (AK-922).

#### Attachments

- 1 - Aperture Cards
- 2 - Field Note Copies

Identical letters sent to:  
Fairbanks Service Center (975-K)  
DM-A (040)  
State Division of Lands

#### cc:

- 924: Autocartographic/Reprographics
- 944: LIS
- 960: Conveyance Management
- 963: Calista Adjudication
- 964: Doyon Adjudication
- 965: Northwest Adjudication
- 966: Southwest Adjudication
- 967: KCS Adjudication
- 968: CIRI/Ahtna Adjudication

Planning Director, Kenai Peninsula Borough  
National Park Service, Division of Lands  
USDA-Forest Service, Engineering

OTHER AGENCIES

Bureau of Land Management  
 Branch of Micrographics (SC-246)  
 Bldg. No. 50, Denver Federal Center  
 P.O. Box 25047  
 Denver, CO 80225-0047  
(Original Plats and Field Notes/REGISTERED MAIL)

Bureau of Land Management  
 Eastern States Office (940)  
 350 S. Pickett Street  
 Alexandria, VA 22304  
(Duplicate Plats and Field Notes/CERTIFIED MAIL)

State of Alaska  
 Dept. of Natural Resources  
 Division of Management  
 3601 C Street, Suites 900-984  
 Anchorage, Alaska 99503  
 ATTN: Micrographics  
(Original Aperture Cards/CERTIFIED MAIL)

Bureau of Indian Affairs  
 Alaska Title Service Center  
 1675 "C" Street  
 Anchorage, Alaska 99501-5198  
(Aperture Cards concerning Native Allotments/CERTIFIED MAIL)

Bureau of Indian Affairs  
 Attn: Area Director  
 Box 3-8000  
 Juneau, Alaska 99801  
(Paper copies of plats concerning Native Allotments/CERTIFIED MAIL)

U.S.G.S.  
 Rocky Mt. Region, Topo Div.  
 Boundaries and Information Unit  
 Federal Center, Bldg. 25  
 Denver, Colorado 80225  
(Paper copies of all Groups and Rectangulars surveys/CERTIFIED MAIL)

USDA - Forest Service  
 ATTN: Gregory Fox  
 Engineering  
 P.O. Box 021628  
 Juneau, Alaska 99802  
(Copy of Memo)

National Park Service  
 ATTN: John Meyers  
 2525 Gambell Street  
 Anchorage, Alaska 99503  
(Copy of Memo)

Dick Troeger  
Planning Director  
Kenai Peninsula Borough  
144 N. Binkley  
Soldotna, Alaska 99669  
(Copy of Memo)

INTERAGENCY

Campbell Tract Facility  
(040)  
(Duplicate Aperture Cards)

Fairbanks Support Center  
Ken Butner (975-K)  
(Duplicate Aperture Cards)





## RECORDERS AND PLACES OF RECORD

<u>NAME</u>	<u>RECORDING DISTRICT</u>	<u>PLACE OF RECORDING</u>	<u>PHONE</u>
<u>FIRST JUDICIAL DISTRICT</u>			
106 DONNA HOEFFNER RECORDER	HAINES	400 WILLOUGHBY 5TH FLR JUNEAU, AK. 99801	465-3441 465-3421
101 DONNA HOEFFNER RECORDER	JUNEAU	400 WILLOUGHBY 5th FLR JUNEAU, AK. 99801	465-3441 465-3421
102 SANDRA FULTON RECORDER	KETCHIKAN	415 MAIN ST., RM.320 KETCHIKAN, AK. 99901	225-3141 225-3141
110 SANDRA FULTON RECORDER	PETERSBURG	415 MAIN ST., RM.320 KETCHIKAN, AK. 99901	225-3141 225-3141
103 LESLIE VALLIE RECORDER	SITKA	210-C LAKE STREET SITKA, AK. 99835	747-3271
111 DONNA HOEFFNER RECORDER	SKAGWAY	400 WILLOUGHBY 5th FLR JUNEAU, AK. 99801	465-3449 465-3425
104 SANDRA FULTON RECORDER	WRANGELL	415 MAIN ST., RM.320 KETCHIKAN, AK. 99901	225-3142 225-3143
<u>SECOND JUDICIAL DISTRICT</u>			
215 JANE BLEVINS RECORDER	KOTZEBUE	250 CUSHMAN ST., STE.3A FAIRBANKS, AK. 99701	452-3521 452-2298
201 SANDRA STRAUB RECORDER	CAPE NOME	BOX 431 NOME, AK. 99762	443-5178
<u>THIRD JUDICIAL DISTRICT</u>			
305 JOANNE HEIMSATH RECORDER	ALEUTIAN ISLANDS	3601 C ST., STE.1134 ANCHORAGE, AK. 99503	762-2444
301 LORETTA BRADEN RECORDER	ANCHORAGE	3601 C ST., STE.1134 ANCHORAGE, AK. 99503	762-2443
307 JOANNE HEIMSATH RECORDER	BRISTOL BAY	3601 C ST., STE.1134 ANCHORAGE, AK. 99503	762-2444
308 MAGISTRATE RECORDER	* CHITINA NO PLAT MACHINE	BOX 86 GLENNALLEN, AK. 99588	822-3405
306 JOANNE HEIMSATH RECORDER	CORDOVA	3601 C ST., STE.1134 ANCHORAGE, AK. 99503	762-2444
309 HELEN JACKSON RECORDER	* HOMER	3858 LAKE ST., STE.7B HOMER, AK. 99603	235-8136
320 JOANNE HEIMSATH RECORDER	ILIAMNA	3601 C ST., STE.1134 ANCHORAGE, AK. 99503	762-2444
302 S CATHERINE MORRISON RECORDER	KENAI	145 MAIN ST. LOOP, RM.B-1 KENAI, AK. 99611	283-3118
303 GLORIA KENNEDY RECORDER	* KODIAK	202 MARINE WAY RM.15 KODIAK, AK. 99615	486-9432
310 JOANNE HEIMSATH RECORDER	KVICHAK	3601 C ST., STE.1134 ANCHORAGE, AK. 99503	762-2444
311 MARTA HENSEL RECORDER	PALMER	836 SO. COLONY WAY PALMER, AK. 99645	745-3080 745-2028
313 HELEN JACKSON RECORDER	* SELDOVIA	3858 LAKE ST., STE.7B HOMER, AK. 99603	235-8136
314 MAGISTRATE RECORDER	* SEWARD NO PLAT MACHINE GET CO'S HERE	BOX 1929 SEWARD, AK. 99664	224-3075
321 MARTA HENSEL RECORDER	TALKEETNA	836 SO. COLONY WAY PALMER, AK. 99645	745-3080 745-2028
318 MAGISTRATE RECORDER	* VALDEZ NO PLAT MACHINE	BOX 127 VALDEZ, AK. 99686	835-2266

PAGE 1 OF 2

**RECORDERS AND PLACES OF RECORD CONTINUED:**

<u>NAME</u>	<u>RECORDING DISTRICT</u>	<u>PLACE OF RECORDING</u>	<u>PHONE</u>
<u>FOURTH JUDICIAL DISTRICT</u>			
413 JANE BLEVINS RECORDER	BARROW	250 CUSHMAN ST., STE.3A FAIRBANKS, AK. 99701	452-3521
402 GRACE LIEB RECORDER	* BETHEL	BOX 426 BETHEL, AK. 99559	452-2298 543-3391
401 JOAN BLEVINS RECORDER	FAIRBANKS	250 CUSHMAN ST., STE.3A FAIRBANKS, AK. 99701	452-3521 452-2298
417 JANE BLEVINS RECORDER	FT. GIBBON	250 CUSHMAN ST., STE.3A FAIRBANKS, AK. 99701	452-3521 452-2298
403 JOANNE HEIMSATH RECORDER	KUSKOKWIM	3601 C ST., STE.1134 ANCHORAGE, AK. 99503	762-2444
412 JANE BLEVINS RECORDER	MANLEY HOT SPRINGS	250 CUSHMAN ST., STE.3A FAIRBANKS, AK. 99701	452-3521 452-2298
411 JANE BLEVINS RECORDER	MT. MCKINLEY	250 CUSHMAN ST., STE.3A FAIRBANKS, AK. 99701	452-3521 452-2298
414 JANE BLEVINS RECORDER	NENANA	250 CUSHMAN ST., STE.3A FAIRBANKS, AK. 99701	452-3521 452-2298
415 JANE BLEVINS RECORDER	NULATO	250 CUSHMAN ST., STE.3A FAIRBANKS, AK. 99701	452-3521 452-2298
416 JANE BLEVINS RECORDER	RAMPART	250 CUSHMAN ST., STE.3A FAIRBANKS, AK. 99701	452-3521 452-2298

.. JULY 1, 1975: the geographical boundaries of McCarthy and Chitina were combined to be known as the Chitina Recording District.

the geographical boundaries of Hyder and Ketchikan were combined to be known as the Ketchikan Recording District.

the geographical boundaries of Fairhaven and Cape Nome were combined to be known as the Cape Nome Recording District.

the Barrow Recording District was established.

the Kotzebue Recording District was established.

ON JAN. 1, 1980: the PLACE OF RECORDING for the Bethel and Kuskokwim Recording Districts was changed from Bethel to Anchorage.

ON JULY 15, 1981: the PLACE OF RECORDING for the Bethel Recording District was changed from Anchorage To Bethel.

ROSE E. FARREN, STATE RECORDER  
3601 C STREET, SUITE 1134  
ANCHORAGE, AK. 99503

9600 (923)

District Recorder  
Anchorage Recording District  
State of Alaska  
3601 C Street, Suite 1134  
Anchorage, Alaska 99503

Dear District Recorder:

The plat ( sheets) transmitted to you by this letter portrays a land survey conducted by the United States Department of the Interior-Bureau of Land Management to fulfill statutory requirements mandated by the Alaska Native Claims Settlement Act (ANCSA, P.L. 92-203) Sections 13(a) and 14(c) for reconveyance of State, Native, non-Native and other entitlements as appropriate. The parcels for reconveyance represented by this plat are portions of land patented and/or interim conveyed (IC'd) by the United States to Native Corporation.

The authority to execute all federal land surveys in Alaska has been delegated by the Secretary of Interior to the Director, Bureau of Land Management (BLM) and subsequently redelegated to the Chief Cadastral Surveyor for the Alaska State Office of BLM. Accordingly, we request this plat be filed with Anchorage Recording District to comply with federal law and regulations.

Sincerely,

Robert W. Arndorfer  
Deputy State Director  
for Cadastral Survey, Alaska

cc: Native Corporation  
14(c) Plat File  
14(c) Contract File  
Branch Chief  
Reading File

# STATE OF ALASKA

Receipt of Payment

STATE RECORDER

7th (LOCATION) 2-17-88 (DATE)

RECEIVED FROM USF/BLM Alaska State Rec.  
701 "C" St #13  
Circle Ak. 99573

DOC. NO. 88-2535 TYPE DOC.

CODE	REVENUE	AMOUNT
021	RECORDING	30 —
024	MISC.	

ISSUED BY BM? 30 —

MEMO # 04-385 604 234

REC NO. 103  CASH  CHECK  MO ORIGINAL

RECEIVED  
\$3.00

## Memorandum

To: The Appropriate Records Office

From: Chief, Cadastral Surveyor of ( )

Subject: Suspension of Plat and Corrective Dependent Resurvey,  
T. 14 S., R. 8 W.,  
Meridian,

Pursuant to a report from Theodore Langton, R.L.S., an investigation has been conducted at the corner of sections 1, 6, 7, and 12, on the west boundary of the township, by \_\_\_\_\_, Cadastral Surveyor. Mr. \_\_\_\_\_ report findings, dated March 5, 1987, states that the monument set by the BLM in \_\_\_\_\_ to perpetuate the original corner is erroneously positioned by approximately 0.430 chains distance (see copy of \_\_\_\_\_ report for details). This affects the position of three other monuments set in 1969.

This office will prepare special instructions for a corrective dependent resurvey consisting of properly positioning the monument at the corner of sections 1, 6, 7, and 12, and correcting the corners and lines affected by this change.

Additionally, the plat of the 1969-70 resurvey accepted June 8, 1972, will be suspended. The following statement will be added to the lower right hand corner of the original plat, inside the border.

"Suspended, March 31, 1987, see File 9630 ( 942)."

A copy of this memorandum will be forwarded to the Deputy State Director for Cadastral Survey (ES-940) to serve as their notification to place the same notation on the duplicate original plat.

For the Director,  
Bureau of Land Management

Chief Cadastral Surveyor of ( )

cc: DSD, Cadastral Survey (ES-940)



# United States Department of the Interior

BUREAU OF LAND MANAGEMENT  
WASHINGTON, D.C. 20240

IN REPLY REFER TO:

9611.4 (420)  
Gp. 227, Al

November 8, 1978

**Memorandum**

**To:** SD, Alaska

**From:** Director, Bureau of Land Management

**Subject:** Suspension of Survey Plats, Tps. 27 S., Rs. 33-34 E.,  
Copper River Meridian, Alaska

On October 10, 1978, Mr. David Wolf of Keane, Harper, Pearlman, and Copeland, Attorneys for Yak-Tat Kwaan, Incorporated, filed a statement of reasons with the Alaska Native Claims Appeal Board, in which, among other things, the land areas represented on certain survey plats were questioned. The survey plats being challenged are the plats of Tps. 27 S., Rs. 33-34 E., Copper River Meridian, Alaska, accepted November 15, 1977.

At the request of the Regional Solicitor, Anchorage Region, dated October 25, 1978, the plats described above are hereby suspended pending a consideration of the issues raised and to permit interim conveyance of the lands involved to Yak-Tat Kwaan, Incorporated.

The original and triplicate original plats on file in your office will be marked in the lower left corner as follows:

SUSPENDED November 8, 1978 - File, Group 227, Alaska; 9611.4 (420)

The duplicate original plat on file in the Washington, D.C. office of the Bureau of Land Management will be noted accordingly.

The land status records in your office for these townships should also be noted with the plat suspension date.

For the Director

Bernard W. Hostrop  
Chief, Division of  
Cadastral Survey

RECEIVED

NOV 15 1978

Bureau of Land Management  
Division of Cadastral Surveys  
Anchorage, Alaska 99501

*RWP*  
*10/9*  
*File*  
*Exp. 2*

*above has been checked*  
*RWP*

UNITED STATES  
DEPARTMENT OF THE INTERIOR  
Bureau of Land Management  
Alaska State Office  
701 C Street, Box 13  
Anchorage, Alaska 99513

NOTICE OF SUSPENSION OF PLATS OF SURVEY

1. Plats of survey of the lands described below were  
officially suspended in the Alaska State Office, Anchorage, Alaska, effective  
at 7:30 a.m. March 11, 1982

KATEEL RIVER MERIDIAN, ALASKA

T. 9 S., R. 33 W.  
T. 10 S., R. 33 W.  
T. 10 S., R. 34 W.  
T. 10 S., R. 35 W.  
T. 11 S., R. 33 W.  
T. 11 S., R. 34 W.  
T. 11 S., R. 35 W.  
T. 12 S., R. 32 W.  
T. 12 S., R. 33 W.

2. The plats have been annotated in the lower left hand corner with the following statement: "Suspended March 11, 1982 - File Group 226, Alaska, 9611.4 (922)."

Francis D. Eickbush  
Chief, Division of Cadastral Survey

Division of Cadastral Survey  
Anchorage, Alaska

\_\_\_\_\_  
Date

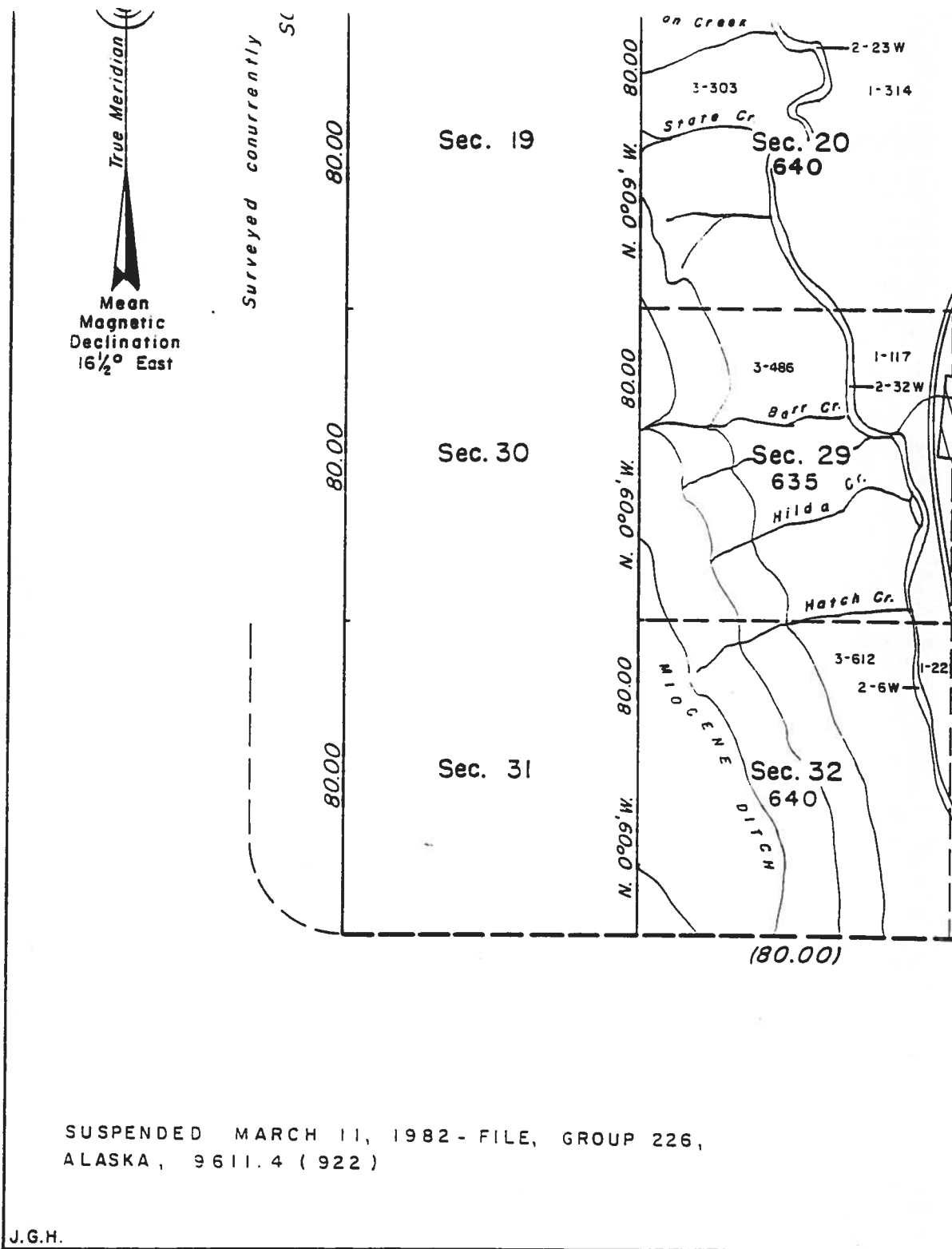
Certified to be a true copy of the original.

\_\_\_\_\_  
Authorized Signature

cc:  
Director (420)  
Cadastral (922)  
Res. (930)  
Pub. Ser. (941)

Central Files  
LEvans:dcl:8/2/82:x5591





SUSPENDED MARCH 11, 1982 - FILE, GROUP 226,  
ALASKA, 9611.4 (922)

J.G.H.

**Memorandum**

**To:** The Appropriate Records Office

**From:** Chief, Cadastral Surveyor of ( )

**Subject:** Removal of Plat Suspension, Group  
T. 14 S., R. 8 W., Meridian,

The corrective dependent resurvey of T. 14 S., R. 8 W., Meridian, conducted under Group No. , was accepted August 7, 1987. Lines corrected were dependently resurveyed in 1979-81, as shown on the official plat of survey accepted April 21, 1983, and suspended March 25, 1 pending the corrective resurvey.

With the acceptance of the corrective resurvey, the suspension on the plat accepted April 21, 1983, can now be lifted. You are therefore, directed to place the following notation on the plat accepted April 21, 1983, under the suspension notation:

"Suspension Lifted, August 7, 1987, File 9630 ( 942).  
Refer to plat accepted August 7, 1987."

A copy of this memorandum will be forwarded to the Deputy State Director for Cadastral Survey (ES-940) to serve as their notification to place the same notation on the duplicate original plat.

For the Director,  
Bureau of Land Management

Chief Cadastral Surveyor of ( )

cc: DSD, Cadastral Survey (ES-940)

Example Memo  
Attachment "B"

9611.4 (D)  
Group No.  
Alaska

BUREAU OF  
LAND MANAGEMENT  
MAIL ROOM

JUL 2 8 26 AM '79

JUNE 25, 1979

RECEIVED  
ANCHORAGE, AK

1  
Fil  
JB

**Memorandum**

**To:** SD, Alaska

**From:** Director

**Subject:** Cancellation of Plats, Tps. 27 S., Rs. 33 and 34 E., Copper River Meridian, Alaska

By memorandum dated May 30, 1979, your Chief, Division of Cadastral Survey requested cancellation of the survey of Tps. 27 S., Rs. 33 and 34 E., Copper River Meridian, executed by Bernard M. Hayring for Philles Engineering and Architectural Services, Inc., and Christian, Spring, Sielbach and Associates, under Contract No. YA-512-CT6-96, and shown on the plats accepted November 15, 1977.

4

A field investigation of the subject survey has shown certain areas to be in error and other areas to be questionable.

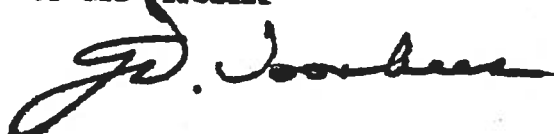
No patents have been issued based upon this survey.

The survey of Tps. 27 S., Rs. 33 and 34 E., Copper River Meridian, Alaska, executed by Bernard M. Hayring for Philles Engineering and Architectural Services, Inc., and Christian, Spring, Sielbach and Associates, under Contract No. YA-512-CT6-96, accepted November 15, 1977, is hereby cancelled effective June 26, 1979.

The appropriate notation should be added to the original and triplicate plats which are in the custody of your office. The same notation will be added to the duplicate original plat which is in the custody of this office.

We are returning, under separate cover, the unaccepted plat of the survey of omitted lands in section 24, T. 27 S., R. 33 E., Copper River Meridian, which should be included on the new plat of T. 27 S., R. 33 E.

For the Director



Chief, Cadastral Survey Examination  
and Approval Staff



# United States Department of the Interior

Appendix Page 46



BUREAU OF LAND MANAGEMENT  
ALASKA STATE OFFICE  
222 W. 7th Avenue, #13  
ANCHORAGE, ALASKA 99513-7599

9600/2620  
(964) cmp

MAR 8 1989

## Memorandum

To: Deputy State Director for Cadastral Survey (920)  
From: Deputy State Director for Conveyance Management (960)  
Subject: Cancellation of Protraction Surveys From Which No Patents Have Been Issued

This is to provide an update and confirmation of the accuracy of the protraction surveys. The list previously given to you included the following groups that are not the protraction (paper) surveys in question, but actual tract surveys and should not be cancelled:

<u>Group No.</u>	<u>Group No.</u>
89	173
104	185
112	200
113	201
151	219
172	326

The attached list has been revised to reflect only the groups that are the protracted surveys indicating the number of patents issued, based on this type of survey plat.

*Wayne A. Boden*



United States Department of the Interior

Appendix Page 47



BUREAU OF LAND MANAGEMENT  
ALASKA STATE OFFICE  
701 C STREET, BOX 13  
ANCHORAGE, ALASKA 99513-0099

SEP 19 1988

9621 (92)

Memorandum

To: DSD for Support Services (970)  
From: DSD for Cadastral Survey (920)  
Subject: Cancellation of Group No. 311, Area A

Group No. 311, Area A is a Protraction Survey of 105 townships in the Seward Meridian to accommodate state selected lands. The plat was accepted in 1974. No monumentation exists on the ground and no patents have been issued based on this plat.

Patent Plan Priority window No. 1234 (Kahiltna River/Lake Creek), a 1988 survey priority, is contained within the northerly one-half of Group No. 311, Area A. Since no monumentation exists and to prevent the confusion of multiple Group Numbers, it would be advisable to cancel Group No. 311 A and assign a new Group Number to the Kahiltna River/Lake Creek project. A short note transmittal from the Branch of CIRI/AHTNA Adjudication dated January 25, 1988, states the survey may be safely cancelled.

cc:

Title and Land Status (973)  
Chief, Cartography Section (922)  
Eastern States Office (940)  
Denver Service Center (D-246)  
Branch of CIRI/AHTNA Adjudication (968)

/s/ ROBERT W. ARNDORFER

923:RBradley:rw:09/14/88:0603S



## United States Department of the Interior



BUREAU OF LAND MANAGEMENT  
ALASKA STATE OFFICE  
701 C STREET, BOX 13  
ANCHORAGE, ALASKA 99513-0099

APR 28 1984

9621 (920)

*Z.J. Stai  
rew 41*

## Memorandum

To: DSD for Support Services (970)

From: DSD for Cadastral Survey (920)

Subject: Cancellation of the Plats of Protraction Surveys:  
Group No. 143, Umiat Meridian  
Group No. 193, Fairbanks Meridian  
Group No. 309, Area E, Seward Meridian  
Group No. 311, Area A, Seward Meridian  
Group No. 311, Area C, Seward Meridian  
Group No. 312, Seward Meridian  
Group No. 315, Fairbanks Meridian  
Group No. 317, Copper River Meridian

A decision memorandum, dated March 15, 1984, from Deputy Under Secretary Bill Horn to the Secretary, included a copy of a Memorandum of Agreement (MOA) between Interior and the State of Alaska. Paragraph 2(b) of that MOA stated "Any approved protracted plat on which patent was not issued prior to December 5, 1983, shall be cancelled by the Secretary."

In view of the above, these protraction surveys are hereby cancelled and should be removed from the Master Title Plats and the working copies of the Protraction Diagram. The cancellations will be noted in the margins of the working copy of the Protraction Diagrams. The original and duplicate plats are to be noted "cancelled" as of the date of this memorandum, new aperture cards will be made, and the townships completely removed from the AALARS/Cadastral Programs.

/s/ Gust C. Panos (Acting)

cc:  
Title and Land Status (973)  
Chief, Cartography Section (924)  
Eastern States Office (940)  
Fairbanks Support Center (975-K)  
GCDB (972D)

ORIGINAL

**STATE SELECTION SURVEY, GROUP No. 193, FAIRBANKS MERIDIAN, ALASKA**

**PROTRACTED TOWNSHIPS**

Tps. 2-3, R.3E.; Portion of T.4N, R.3E.; Tps. 2-5N, Rs. 4-5E.; T.2N, R.6E., W.1/2; Tps. 3-5N, R.6E.;  
 T.3N, R.7E., W.1/2, NE.1/4; Tps. 4-6N, R.7E.; T.3N, R.8E., N.1/2; Tps. 4-7N, R.8E.; Tps. 3-4N, Rs. 9-10E.

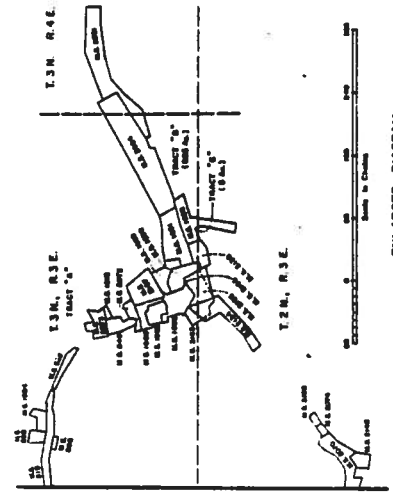


UNITED STATES DEPARTMENT OF THE INTERIOR  
 BUREAU OF LAND MANAGEMENT  
 Washington, D. C. September 20, 1974

This plat is based upon the official records,  
 and having been correctly prepared, is hereby  
 accepted.

For the Director

*Samuel W. Johnson*  
 Chief, Division of Cadastral Survey



This plat contains the entire survey record.

The plat represents a survey of certain lands selected by the State of Alaska pursuant to the grants made or confirmed by the Alaska Statehood Act of July 7, 1958 (72 Stat. 339). The descriptions of these lands, their areas and geographic coordinates of angle points along the perimeter, unless previously surveyed, are as shown on Protraction Diagram Nos. 97-11, 12, 13, and 15, approved January 26, 1960, and 97-14, approved February 10, 1960.

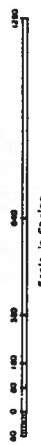
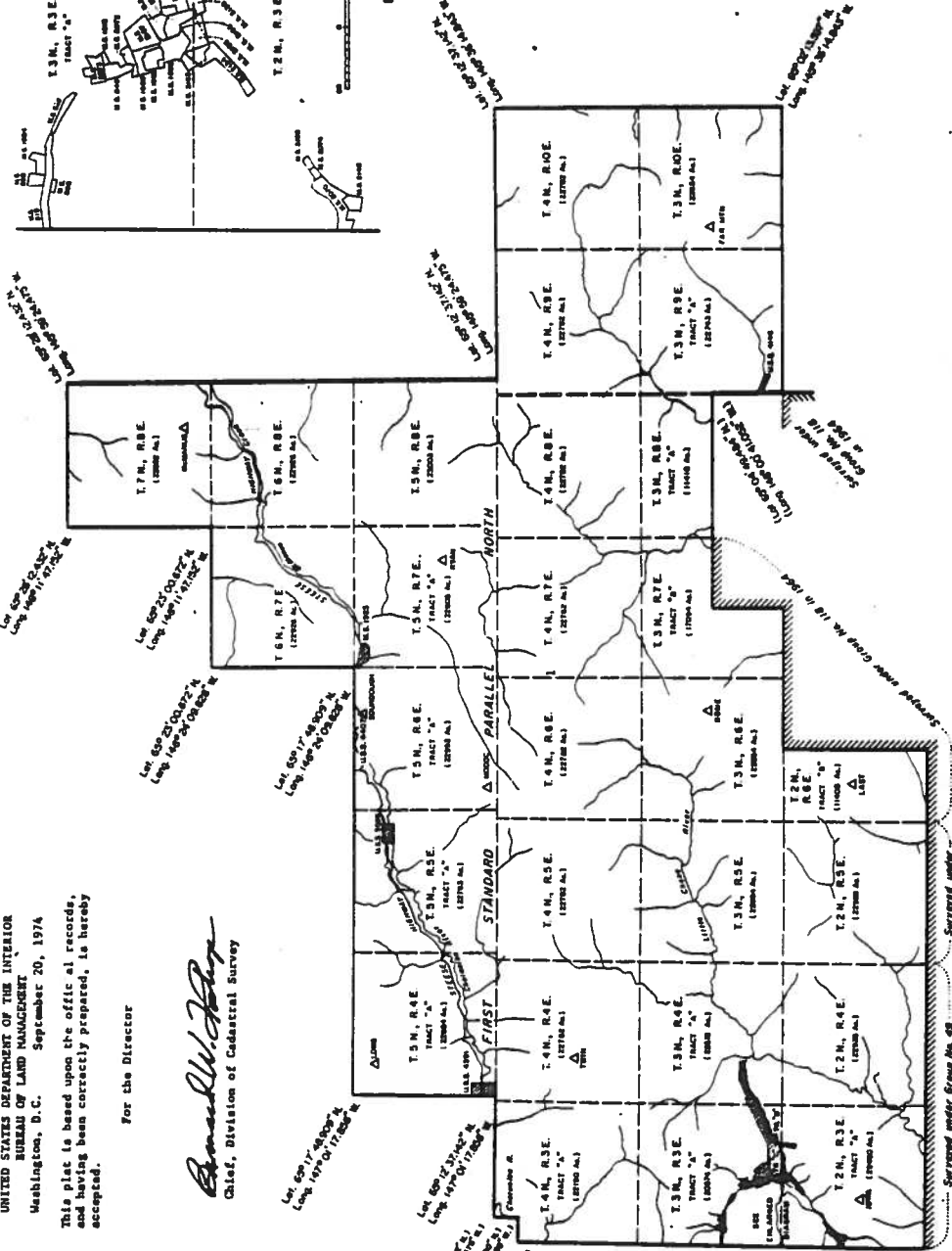
A Memorandum of Understanding between the State of Alaska and the United States on the survey of Alaska State Selections, dated September 10 and September 21, 1973, provides the basis by which this plat was created.

The preparation of this plat was authorized under Special Instructions dated May 1, 1974, for Group No. 193, Alaska.

The locations of approved U.S. surveys and U.S. sectional surveys shown herein are based entirely upon official records and the survey records. The areas of these surveys are excluded from the areas returned for the townships in which they are plotted and the remaining portions of these townships have been designated tracts for legal description purposes.

The portions of the partial townships surveyed have also been designated tracts for legal description purposes.

The hydrography as shown on this plat was obtained from current U.S. Geological Survey topographic maps.



Area: 607,639 Acres

Surveyed under Group No. 49  
 Group No. 193  
 1959 through 1960



United States Department of the Interior

Appendix Page 50



BUREAU OF LAND MANAGEMENT  
ALASKA STATE OFFICE  
701 C STREET, BOX 13  
ANCHORAGE, ALASKA 99513-0099

APR 18 1989

9621 (1)  
R.J.  
April

Memorandum

To: DSD for Support Services (970)  
From: DSD for Cadastral Survey (920)  
Subject: Cancellation of USS No. 6173

U.S. Survey No. 6173 was surveyed in 1979 to accommodate the Native allotment of Mr. Charley James (serial number F-1656). Since the time of this survey, the boundaries of this allotment have been altered, requiring additional survey to accommodate the allotment. A portion of the new description encompasses a portion of USS No. 6173.

In view of the above, USS No. 6173 is hereby cancelled and the original and duplicate plats are to be marked "CANCELLED" as of the date of this memorandum. The survey is to be removed from the Master Title Plat and the working copy of Protraction Diagram CR3-2. The cancellation is to be noted in the margin of the working copy of the Protraction Diagram.

cc: Mapping Sciences (924)

/s/ Robert W. Arndorfer

923:RMaron:rew:04/18/89:0710S





United States Department of the Interior

Appendix Page 50



BUREAU OF LAND MANAGEMENT  
ALASKA STATE OFFICE  
701 C STREET, BOX 13  
ANCHORAGE, ALASKA 99513-0099

APR 18 1989

9621 (1)  
R.J.  
April

Memorandum

To: DSD for Support Services (970)  
From: DSD for Cadastral Survey (920)  
Subject: Cancellation of USS No. 6173

U.S. Survey No. 6173 was surveyed in 1979 to accommodate the Native allotment of Mr. Charley James (serial number F-1656). Since the time of this survey, the boundaries of this allotment have been altered, requiring additional survey to accommodate the allotment. A portion of the new description encompasses a portion of USS No. 6173.

In view of the above, USS No. 6173 is hereby cancelled and the original and duplicate plats are to be marked "CANCELLED" as of the date of this memorandum. The survey is to be removed from the Master Title Plat and the working copy of Protraction Diagram CR3-2. The cancellation is to be noted in the margin of the working copy of the Protraction Diagram.

cc: Mapping Sciences (924)

/s/ Robert W. Arndorfer

923:RMaron:rew:04/18/89:0710S

United States Department of the Interior  
BUREAU OF LAND MANAGEMENT  
Alaska State Office

(7130-2206)

SURVEY COSTS

Survey No. 890Z Surveyor OGONOWSKI Date 9-18-86 → 9-19-86

FIELD SALARIES

Name & Date	Grade	Hours	Rate	Cost	Hours			Per Diem Cost	Totals
					O.T.	Rate	Cost		
<u>OGONOWSKI 1/10/87</u>	<u>11/07</u>	<u>8</u>	<u>\$16.38</u>	<u>\$ 131.04</u>	<u>3</u> (incl)	<u>\$ 17.325</u>	<u>\$ 51.95</u>	<u>\$ 182.99</u>	
<u>ELIS 9-19-86</u>	<u>5/01</u>	<u>8</u>	<u>8.65</u>	<u>69.18</u>	<u>2</u>	<u>10.39</u>	<u>20.78</u>	<u>136.50</u>	
				<b>Totals</b>			<b>\$ 200.24</b>	<b>\$ 72.71</b>	<b>\$ 273.00</b>

TRANSPORTATION

Type of Carrier	Base or Standby		Cost	Flying Time or TR		Cost
	Rate	Time		Rate	Time	
	\$		\$	\$		\$
<b>Totals</b>						

SUPPLIES-MATERIALS-MISCELLANEOUS

Item	Unit Cost	Used	Cost	Item	Unit Cost	Used	Cost
<u>Comm. Post</u>	<u>\$ 12.5</u>	<u>4</u>	<u>\$ 50</u>				
<b>Totals</b>							

TOTAL FIELD COST

OFFICE COSTS

<u>Rough Draft Notes - Name &amp; Date</u>	<u>Grade</u>	<u>Hours</u>	<u>Rate</u>	<u>Cost</u>
<u>OGONOWSKI 1-19-87</u>	<u>11/07</u>	<u>8</u>	<u>\$ 16.71</u>	<u>\$ 133.69</u>
<u>Drafting and Checking - Name &amp; Date</u>				
<u>Final Review - Jerry 7-27-87</u>	<u>12/5</u>	<u>9</u>	<u>23.8</u>	<u>47.59</u>
<u>Check 7/11/87</u>	<u>11/5</u>	<u>5</u>	<u>18.33</u>	<u>9.16</u>
<u>Marshall Strauss</u>	<u>2/5</u>	<u>14</u>	<u>17.39</u>	<u>173.35</u>
<u>Typing and Proofing - Name &amp; Date</u>				
<u>Final Review - Name</u>				
<u>Supplies and Materials</u>				
<u>Plot Reproduction</u>				
<u>Miscellaneous Office Costs</u>				
<b>Totals</b>				
				<b>\$ 363.79</b>
<b>TOTAL OFFICE COSTS</b>				<b>\$ 364</b>
<b>TOTAL FIELD AND OFFICE COSTS</b>				<b>960</b>
<u>Administrative Charges</u>				<u>(.19)X</u>
<b>TOTAL SURVEY COSTS</b>				<b>\$ 1147</b>

Area \_\_\_\_\_  
Chains (Including Ties & Traverse) \_\_\_\_\_  
No. of Monuments State Office \_\_\_\_\_

OFFICE ACCOUNTING WILL FILL  
WITHIN HEAVY LINES

NOTE: Provide per cent of materials and documents affecting documents on reverse side.

B.L.M.	STATE	FROM	THRU	2022	2021	2020	2019	2018	2017	2016	2015	2014	2013	2012	2011	2010	2009	2008	2007	2006	2005	2004	2003	2002	2001	2000	1999	1998	1997	1996	1995	1994	1993	1992	1991	1990	1989	1988	1987	1986	1985	1984	1983	1982	1981	1980	1979	1978	1977	1976	1975	1974	1973	1972	1971	1970	1969	1968	1967	1966	1965	1964	1963	1962	1961	1960	1959	1958	1957	1956	1955	1954	1953	1952	1951	1950	1949	1948	1947	1946	1945	1944	1943	1942	1941	1940	1939	1938	1937	1936	1935	1934	1933	1932	1931	1930	1929	1928	1927	1926	1925	1924	1923	1922	1921	1920	1919	1918	1917	1916	1915	1914	1913	1912	1911	1910	1909	1908	1907	1906	1905	1904	1903	1902	1901	1900	1899	1898	1897	1896	1895	1894	1893	1892	1891	1890	1889	1888	1887	1886	1885	1884	1883	1882	1881	1880	1879	1878	1877	1876	1875	1874	1873	1872	1871	1870	1869	1868	1867	1866	1865	1864	1863	1862	1861	1860	1859	1858	1857	1856	1855	1854	1853	1852	1851	1850	1849	1848	1847	1846	1845	1844	1843	1842	1841	1840	1839	1838	1837	1836	1835	1834	1833	1832	1831	1830	1829	1828	1827	1826	1825	1824	1823	1822	1821	1820	1819	1818	1817	1816	1815	1814	1813	1812	1811	1810	1809	1808	1807	1806	1805	1804	1803	1802	1801	1800	1799	1798	1797	1796	1795	1794	1793	1792	1791	1790	1789	1788	1787	1786	1785	1784	1783	1782	1781	1780	1779	1778	1777	1776	1775	1774	1773	1772	1771	1770	1769	1768	1767	1766	1765	1764	1763	1762	1761	1760	1759	1758	1757	1756	1755	1754	1753	1752	1751	1750	1749	1748	1747	1746	1745	1744	1743	1742	1741	1740	1739	1738	1737	1736	1735	1734	1733	1732	1731	1730	1729	1728	1727	1726	1725	1724	1723	1722	1721	1720	1719	1718	1717	1716	1715	1714	1713	1712	1711	1710	1709	1708	1707	1706	1705	1704	1703	1702	1701	1700	1699	1698	1697	1696	1695	1694	1693	1692	1691	1690	1689	1688	1687	1686	1685	1684	1683	1682	1681	1680	1679	1678	1677	1676	1675	1674	1673	1672	1671	1670	1669	1668	1667	1666	1665	1664	1663	1662	1661	1660	1659	1658	1657	1656	1655	1654	1653	1652	1651	1650	1649	1648	1647	1646	1645	1644	1643	1642	1641	1640	1639	1638	1637	1636	1635	1634	1633	1632	1631	1630	1629	1628	1627	1626	1625	1624	1623	1622	1621	1620	1619	1618	1617	1616	1615	1614	1613	1612	1611	1610	1609	1608	1607	1606	1605	1604	1603	1602	1601	1600	1599	1598	1597	1596	1595	1594	1593	1592	1591	1590	1589	1588	1587	1586	1585	1584	1583	1582	1581	1580	1579	1578	1577	1576	1575	1574	1573	1572	1571	1570	1569	1568	1567	1566	1565	1564	1563	1562	1561	1560	1559	1558	1557	1556	1555	1554	1553	1552	1551	1550	1549	1548	1547	1546	1545	1544	1543	1542	1541	1540	1539	1538	1537	1536	1535	1534	1533	1532	1531	1530	1529	1528	1527	1526	1525	1524	1523	1522	1521	1520	1519	1518	1517	1516	1515	1514	1513	1512	1511	1510	1509	1508	1507	1506	1505	1504	1503	1502	1501	1500	1499	1498	1497	1496	1495	1494	1493	1492	1491	1490	1489	1488	1487	1486	1485	1484	1483	1482	1481	1480	1479	1478	1477	1476	1475	1474	1473	1472	1471	1470	1469	1468	1467	1466	1465	1464	1463	1462	1461	1460	1459	1458	1457	1456	1455	1454	1453	1452	1451	1450	1449	1448	1447	1446	1445	1444	1443	1442	1441	1440	1439	1438	1437	1436	1435	1434	1433	1432	1431	1430	1429	1428	1427	1426	1425	1424	1423	1422	1421	1420	1419	1418	1417	1416	1415	1414	1413	1412	1411	1410	1409	1408	1407	1406	1405	1404	1403	1402	1401	1400	1399	1398	1397	1396	1395	1394	1393	1392	1391	1390	1389	1388	1387	1386	1385	1384	1383	1382	1381	1380	1379	1378	1377	1376	1375	1374	1373	1372	1371	1370	1369	1368	1367	1366	1365	1364	1363	1362	1361	1360	1359	1358	1357	1356	1355	1354	1353	1352	1351	1350	1349	1348	1347	1346	1345	1344	1343	1342	1341	1340	1339	1338	1337	1336	1335	1334	1333	1332	1331	1330	1329	1328	1327	1326	1325	1324	1323	1322	1321	1320	1319	1318	1317	1316	1315	1314	1313	1312	1311	1310	1309	1308	1307	1306	1305	1304	1303	1302	1301	1300	1299	1298	1297	1296	1295	1294	1293	1292	1291	1290	1289	1288	1287	1286	1285	1284	1283	1282	1281	1280	1279	1278	1277	1276	1275	1274	1273	1272	1271	1270	1269	1268	1267	1266	1265	1264	1263	1262	1261	1260	1259	1258	1257	1256	1255	1254	1253	1252	1251	1250	1249	1248	1247	1246	1245	1244	1243	1242	1241	1240	1239	1238	1237	1236	1235	1234	1233	1232	1231	1230	1229	1228	1227	1226	1225	1224	1223	1222	1221	1220	1219	1218	1217	1216	1215	1214	1213	1212	1211	1210	1209	1208	1207	1206	1205	1204	1203	1202	1201	1200	1199	1198	1197	1196	1195	1194	1193	1192	1191	1190	1189	1188	1187	1186	1185	1184	1183	1182	1181	1180	1179	1178	1177	1176	1175	1174	1173	1172	1171	1170	1169	1168	1167	1166	1165	1164	1163	1162	1161	1160	1159	1158	1157	1156	1155	1154	1153	1152	1151	1150	1149	1148	1147	1146	1145	1144	1143	1142	1141	1140	1139	1138	1137	1136	1135	1134	1133	1132	1131	1130	1129	1128	1127	1126	1125	1124	1123	1122	1121	1120	1119	1118	1117	1116	1115	1114	1113	1112	1111	1110	1109	1108	1107	1106	1105	1104	1103	1102	1101	1100	1099	1098	1097	1096	1095	1094	1093	1092	1091	1090	1089	1088	1087	1086	1085	1084	1083	1082	1081	1080	1079	1078	1077	1076	1075	1074	1073	1072	1071	1070	1069	1068	1067	1066	1065	1064	1063	1062	1061	1060	1059	1058	1057	1056	1055	1054	1053	1052	1051	1050	1049	1048	1047	1046	1045	1044	1043	1042	1041	1040	1039	1038	1037	1036	1035	1034	1033	1032	1031	1030	1029	1028	1027	1026	1025	1024	1023	1022	1021	1020	1019	1018	1017	1016	1015	1014	1013	1012	1011	1010	1009	1008	1007	1006	1005	1004	1003	1002	1001	1000	999	998	997	996	995	994	993	992	991	990	989	988	987	986	985	984	983	982	981	980	979	978	977	976	975	974	973	972	971	970	969	968	967	966	965	964	963	962	961	960	959	958	957	956	955	954	953	952	951	950	949	948	947	946	945	944	943	942	941	940	939	938	937	936	935	934	933	932	931	930	929	928	927	926	925	924	923	922	921	920	919	918	917	916	915	914	913	912	911	910	909	908	907	906	905	904	903	902	901	900	899	898	897	896	895	894	893	892	891	890	889	888	887	886	885	884	883	882	881	880	879	878	877	876	875	874	873	872	871	870	869	868	867	866	865	864	863	862	861	860	859	858	857	856	855	854	853	852	851	850	849	848	847	846	845	844	843	842	841	840	839	838	837	836	835	834	833	832	831	830	829	828	827	826	825	824	823	822	821	820	819	818	817	816	815	814	813	812	811	810	809	808	807	806	805	804	803	802	801	800	799	798	797	796	795	794	793	792	791	790	789	788	787	786	785	784	783	782	781	780	779	778	777	776	775	774	773	772	771	770	769	768	767	766	765	764	763	762	761	760	759	758	757	756	755	754	753	752	751	750	749	748	747	746	745	744	743	742	741	740	739	738	737	736	735	734	733	732	731	730	729	728	727	726	725	724	723	722	721	720	719	718	717	716	715	714	713	712	711	710	709	708	707	706	705	704	703	702	701	700	699	698	697	696	695	694	693	692	691	690	689	688	687	686	685	684	683	682	681	680	679	678	677	676	675	674	673	672	671	670	669	668	667	666	665	664	663	662	661	660	659	658	657	656	655	654	653	652	651	650	649	648	647	646	645	644	643	642	641	640	639	638	637	636	635	634	633	632	631	630	629	628	627	626	625	624	623	622	621	620	619	618	617	616
--------	-------	------	------	------	------	------	------	------	------	------	------	------	------	------	------	------	------	------	------	------	------	------	------	------	------	------	------	------	------	------	------	------	------	------	------	------	------	------	------	------	------	------	------	------	------	------	------	------	------	------	------	------	------	------	------	------	------	------	------	------	------	------	------	------	------	------	------	------	------	------	------	------	------	------	------	------	------	------	------	------	------	------	------	------	------	------	------	------	------	------	------	------	------	------	------	------	------	------	------	------	------	------	------	------	------	------	------	------	------	------	------	------	------	------	------	------	------	------	------	------	------	------	------	------	------	------	------	------	------	------	------	------	------	------	------	------	------	------	------	------	------	------	------	------	------	------	------	------	------	------	------	------	------	------	------	------	------	------	------	------	------	------	------	------	------	------	------	------	------	------	------	------	------	------	------	------	------	------	------	------	------	------	------	------	------	------	------	------	------	------	------	------	------	------	------	------	------	------	------	------	------	------	------	------	------	------	------	------	------	------	------	------	------	------	------	------	------	------	------	------	------	------	------	------	------	------	------	------	------	------	------	------	------	------	------	------	------	------	------	------	------	------	------	------	------	------	------	------	------	------	------	------	------	------	------	------	------	------	------	------	------	------	------	------	------	------	------	------	------	------	------	------	------	------	------	------	------	------	------	------	------	------	------	------	------	------	------	------	------	------	------	------	------	------	------	------	------	------	------	------	------	------	------	------	------	------	------	------	------	------	------	------	------	------	------	------	------	------	------	------	------	------	------	------	------	------	------	------	------	------	------	------	------	------	------	------	------	------	------	------	------	------	------	------	------	------	------	------	------	------	------	------	------	------	------	------	------	------	------	------	------	------	------	------	------	------	------	------	------	------	------	------	------	------	------	------	------	------	------	------	------	------	------	------	------	------	------	------	------	------	------	------	------	------	------	------	------	------	------	------	------	------	------	------	------	------	------	------	------	------	------	------	------	------	------	------	------	------	------	------	------	------	------	------	------	------	------	------	------	------	------	------	------	------	------	------	------	------	------	------	------	------	------	------	------	------	------	------	------	------	------	------	------	------	------	------	------	------	------	------	------	------	------	------	------	------	------	------	------	------	------	------	------	------	------	------	------	------	------	------	------	------	------	------	------	------	------	------	------	------	------	------	------	------	------	------	------	------	------	------	------	------	------	------	------	------	------	------	------	------	------	------	------	------	------	------	------	------	------	------	------	------	------	------	------	------	------	------	------	------	------	------	------	------	------	------	------	------	------	------	------	------	------	------	------	------	------	------	------	------	------	------	------	------	------	------	------	------	------	------	------	------	------	------	------	------	------	------	------	------	------	------	------	------	------	------	------	------	------	------	------	------	------	------	------	------	------	------	------	------	------	------	------	------	------	------	------	------	------	------	------	------	------	------	------	------	------	------	------	------	------	------	------	------	------	------	------	------	------	------	------	------	------	------	------	------	------	------	------	------	------	------	------	------	------	------	------	------	------	------	------	------	------	------	------	------	------	------	------	------	------	------	------	------	------	------	------	------	------	------	------	------	------	------	------	------	------	------	------	------	------	------	------	------	------	------	------	------	------	------	------	------	------	------	------	------	------	------	------	------	------	------	------	------	------	------	------	------	------	------	------	------	------	------	------	------	------	------	------	------	------	------	------	------	------	------	------	------	------	------	------	------	------	------	------	------	------	------	------	------	------	------	------	------	------	------	------	------	------	------	------	------	------	------	------	------	------	------	------	------	------	------	------	------	------	------	------	------	------	------	------	------	------	------	------	------	------	------	------	------	------	------	------	------	------	------	------	------	------	------	------	------	------	------	------	------	------	------	------	------	------	------	------	------	------	------	------	------	------	------	------	------	------	------	------	------	------	------	------	------	------	------	------	------	------	------	------	------	------	------	------	------	------	------	------	------	------	------	------	------	------	------	------	------	------	------	------	------	------	------	------	------	------	------	------	------	------	------	------	------	------	------	------	------	------	------	------	------	------	------	------	------	------	------	------	------	------	------	------	------	------	------	------	------	------	------	------	------	------	------	------	------	------	------	------	------	------	------	------	------	------	------	------	------	------	------	------	------	------	------	------	------	------	------	------	------	------	------	------	------	------	------	------	------	------	------	------	------	------	------	------	------	------	------	------	------	------	------	------	------	------	------	------	------	------	------	------	------	------	------	------	------	------	------	------	------	------	------	------	------	------	------	------	------	------	------	------	------	------	------	------	------	------	------	------	------	------	------	------	------	------	------	------	------	------	------	------	------	------	------	------	------	------	------	------	------	------	------	------	------	------	------	------	------	------	------	------	------	------	------	------	------	------	------	------	------	------	------	------	------	------	------	------	------	------	------	------	------	------	------	------	------	------	------	------	------	-----	-----	-----	-----	-----	-----	-----	-----	-----	-----	-----	-----	-----	-----	-----	-----	-----	-----	-----	-----	-----	-----	-----	-----	-----	-----	-----	-----	-----	-----	-----	-----	-----	-----	-----	-----	-----	-----	-----	-----	-----	-----	-----	-----	-----	-----	-----	-----	-----	-----	-----	-----	-----	-----	-----	-----	-----	-----	-----	-----	-----	-----	-----	-----	-----	-----	-----	-----	-----	-----	-----	-----	-----	-----	-----	-----	-----	-----	-----	-----	-----	-----	-----	-----	-----	-----	-----	-----	-----	-----	-----	-----	-----	-----	-----	-----	-----	-----	-----	-----	-----	-----	-----	-----	-----	-----	-----	-----	-----	-----	-----	-----	-----	-----	-----	-----	-----	-----	-----	-----	-----	-----	-----	-----	-----	-----	-----	-----	-----	-----	-----	-----	-----	-----	-----	-----	-----	-----	-----	-----	-----	-----	-----	-----	-----	-----	-----	-----	-----	-----	-----	-----	-----	-----	-----	-----	-----	-----	-----	-----	-----	-----	-----	-----	-----	-----	-----	-----	-----	-----	-----	-----	-----	-----	-----	-----	-----	-----	-----	-----	-----	-----	-----	-----	-----	-----	-----	-----	-----	-----	-----	-----	-----	-----	-----	-----	-----	-----	-----	-----	-----	-----	-----	-----	-----	-----	-----	-----	-----	-----	-----	-----	-----	-----	-----	-----	-----	-----	-----	-----	-----	-----	-----	-----	-----	-----	-----	-----	-----	-----	-----	-----	-----	-----	-----	-----	-----	-----	-----	-----	-----	-----	-----	-----	-----	-----	-----	-----	-----	-----	-----	-----	-----	-----	-----	-----	-----	-----	-----	-----	-----	-----	-----	-----	-----	-----	-----	-----	-----	-----	-----	-----	-----	-----	-----	-----	-----	-----	-----	-----	-----	-----	-----	-----	-----	-----	-----	-----	-----	-----	-----	-----	-----	-----	-----	-----	-----	-----	-----	-----	-----	-----	-----	-----	-----	-----	-----	-----	-----	-----	-----	-----	-----	-----	-----	-----	-----	-----	-----	-----	-----	-----	-----	-----	-----	-----	-----	-----	-----	-----	-----	-----	-----	-----	-----	-----	-----	-----	-----	-----	-----	-----	-----	-----	-----	-----	-----	-----	-----	-----	-----	-----	-----	-----	-----	-----	-----	-----	-----	-----	-----	-----	-----	-----	-----	-----	-----	-----	-----	-----	-----	-----	-----	-----	-----	-----	-----	-----	-----	-----	-----	-----	-----	-----

INDEX

SA PROJ#

B-1..7130 2022  
 C-1..7130 2024  
 D-1..7130 2028  
 E-1..7130 2035  
 F-1..7130 2037  
 G-1..7130 2038  
 H-1..7130 2040  
 I-1..7130 2041  
 J-1..7130 2049  
 K-1..7130 2050  
 L-1..7130 2051  
 M-1..7130 2052  
 N-1..7130 2055  
 B-2..7130 2059  
 C-2..7130 2060  
 D-2..7130 2071  
 E-2..7130 2072  
 F-2..7130 2074  
 G-2..7130 2076  
 H-2..7130 2077  
 I-2..7130 2083  
 J-2..7130 2084  
 K-2..7130 2090  
 L-2..7130 2095  
 M-2..7130 2098  
 N-2..7130 2101

B-3..7130 2102  
 C-3..7130 2104  
 D-3..7130 2107  
 E-3..7130 2108  
 F-3..7130 2109  
 G-3..7130 2110  
 H-3..7130 2112  
 I-3..7130 2117  
 J-3..7130 2118  
 K-3..7130 2128  
 L-3..7130 2144  
 M-3..7130 2145  
 N-3..7130 2146  
 B-4..7130 2147  
 C-4..7130 2150  
 D-4..7130 2153  
 E-4..7130 2158  
 F-4..7130 2159  
 G-4..7130 2164  
 H-4..7130 2165  
 I-4..7130 2169  
 J-4..7130 2170  
 K-4..7130 2171  
 L-4..7130 2172  
 M-4..7130 2173  
 N-4..7130 2176

SA PROJ#

B-5..7130 2175  
 C-5..7130 2182  
 D-5..7130 2183  
 E-5..7130 2184  
 F-5..7130 2185  
 G-5..7130 2186  
 H-5..7130 2188  
 I-5..7130 2189  
 J-5..7130 2190  
 K-5..7130 2191  
 L-5..7130 2192  
 M-5..7130 2193  
 N-5..7130 2194

B-6..7130 2195  
 C-6..7130 2197  
 D-6..7130 2198  
 E-6..7130 2199  
 F-6..7130 2200  
 G-6..7130 2201  
 H-6..7130 2202  
 I-6..7130 2203  
 J-6..7130 2204  
 K-6..7130 2205  
 L-6..7130 2206  
 M-6..7130 2207  
 N-6..7130 2208

B-7..7130 2209  
 C-7..7130 2210  
 D-7..7130 2211  
 E-7..7130 2212  
 F-7..7130 2213  
 G-7..7130 2214  
 H-7..7130 2215  
 I-7..7130 2216  
 J-7..7130 2217  
 K-7..7130 2218  
 L-7..7130 2219  
 M-7..7130 2220  
 N-7..7130 2221  
 B-8..7130 2222  
 C-8..7130 2224  
 D-8..7130 2225  
 E-8..7130 2472  
 F-8..7130 4510  
 G-8..7130 6012  
 H-8..7130 6015  
 I-8..7130 6027  
 J-8..7130 6035  
 K-8..7130 6043  
 L-8..7130 7003  
 M-8..7130 7004  
 N-8..7130 7005

B-9..7130 7013  
 C-9..7130 7014  
 D-9..7130 7016  
 E-9..7130 7020  
 F-9..7130 7023  
 G-9..7130 7030  
 H-9..7130 7031  
 I-9..7130 7040  
 J-9..7130 7043  
 K-9..7130 7046  
 L-9..7130 7048  
 M-9..7130 7053  
 N-9..7130 7054  
 B-10..7130 7058  
 C-10..7130 7060  
 D-10..7130 7064  
 E-10..7130 7067  
 F-10..7130 7068  
 G-10..7130 7069  
 H-10..7130 7070  
 I-10..7130 7077  
 J-10..7130 7078  
 K-10..7130 7079  
 L-10..7130 7080  
 M-10..7130 7085  
 N-10..7130 7086  
 B-11..7130 7087  
 C-11..7130 7088  
 D-11..7130 7089  
 E-11..7130 7090  
 F-11..7130 7100  
 G-11..7130 7108  
 H-11..7130 7109  
 I-11..7130 7126  
 J-11..7130 7200  
 K-11..7130 8888  
 L-11..7130 9999  
 M-11..7130 0113  
 N-11..7300 0113  
 B-12..7300 0401  
 C-12..7300 0412  
 D-12..7300 0414  
 E-12..7300 0411  
 F-12..7300 0420  
 G-12..7300 0421  
 H-12..7300 0427  
 I-12..7300 0440  
 J-12..7300 0450  
 K-12..7300 0452  
 L-12..7300 0458  
 M-12..7300 0459  
 N-12..7300 0460

SA PROJ#

B-9..7130 7013  
 C-9..7130 7014  
 D-9..7130 7016  
 E-9..7130 7020  
 F-9..7130 7023  
 G-9..7130 7030  
 H-9..7130 7031  
 I-9..7130 7040  
 J-9..7130 7043  
 K-9..7130 7046  
 L-9..7130 7048  
 M-9..7130 7053  
 N-9..7130 7054  
 B-10..7130 7058  
 C-10..7130 7060  
 D-10..7130 7064  
 E-10..7130 7067  
 F-10..7130 7068  
 G-10..7130 7069  
 H-10..7130 7070  
 I-10..7130 7077  
 J-10..7130 7078  
 K-10..7130 7079  
 L-10..7130 7080  
 M-10..7130 7085  
 N-10..7130 7086  
 B-11..7130 7087  
 C-11..7130 7088  
 D-11..7130 7089  
 E-11..7130 7090  
 F-11..7130 7100  
 G-11..7130 7108  
 H-11..7130 7109  
 I-11..7130 7126  
 J-11..7130 7200  
 K-11..7130 8888  
 L-11..7130 9999  
 M-11..7130 0113  
 N-11..7300 0113  
 B-12..7300 0401  
 C-12..7300 0412  
 D-12..7300 0414  
 E-12..7300 0411  
 F-12..7300 0420  
 G-12..7300 0421  
 H-12..7300 0427  
 I-12..7300 0440  
 J-12..7300 0450  
 K-12..7300 0452  
 L-12..7300 0458  
 M-12..7300 0459  
 N-12..7300 0460

B-13..7300 0464  
 C-13..7300 0517  
 D-13..7300 0601  
 E-13..7300 1000  
 F-13..7300 2001  
 G-13..7300 3002  
 H-13..7300 3003  
 I-13..7300 3005  
 J-13..7300 3134  
 K-13..7300 4004  
 L-13..7300 4006  
 M-13..7300 4007  
 N-13..7300 4008  
 B-14..7300 4009  
 C-14..7300 4200  
 D-14..7300 4210  
 E-14..7300 4270  
 F-14..7300 5002  
 G-14..7300 5003  
 H-14..7300 5006  
 I-14..7300 5007  
 J-14..7300 5009  
 K-14..7300 6001  
 L-14..7300 6002  
 M-14..7300 6003  
 N-14..7300 6006  
 B-15..7300 6007  
 C-15..7300 6008  
 D-15..7300 6010  
 E-15..7300 7001  
 F-15..7300 7002  
 G-15..7300 7003  
 H-15..7300 7006  
 I-15..7300 7007  
 J-15..7300 7008  
 K-15..7300 7009  
 L-15..7300 8001  
 M-15..7300 8005  
 N-15..7300 8006  
 B-16..7300 8008  
 C-16..7300 8009  
 D-16..7300 9000  
 E-16..7300 9002  
 F-16..7300 9003  
 G-16..7300 9005  
 H-16..7300 9006  
 I-16..7300 9007  
 J-16..7300 9008  
 K-16..7300 9009  
 L-16..7300 9010  
 M-16..7300 9011

B-11..7130 7087  
 C-11..7130 7088  
 D-11..7130 7089  
 E-11..7130 7090  
 F-11..7130 7100  
 G-11..7130 7108  
 H-11..7130 7109  
 I-11..7130 7126  
 J-11..7130 7200  
 K-11..7130 8888  
 L-11..7130 9999  
 M-11..7130 0113  
 N-11..7300 0113  
 B-12..7300 0401  
 C-12..7300 0412  
 D-12..7300 0414  
 E-12..7300 0411  
 F-12..7300 0420  
 G-12..7300 0421  
 H-12..7300 0427  
 I-12..7300 0440  
 J-12..7300 0450  
 K-12..7300 0452  
 L-12..7300 0458  
 M-12..7300 0459  
 N-12..7300 0460

B-13..7300 0464  
 C-13..7300 0517  
 D-13..7300 0601  
 E-13..7300 1000  
 F-13..7300 2001  
 G-13..7300 3002  
 H-13..7300 3003  
 I-13..7300 3005  
 J-13..7300 3134  
 K-13..7300 4004  
 L-13..7300 4006  
 M-13..7300 4007  
 N-13..7300 4008  
 B-14..7300 4009  
 C-14..7300 4200  
 D-14..7300 4210  
 E-14..7300 4270  
 F-14..7300 5002  
 G-14..7300 5003  
 H-14..7300 5006  
 I-14..7300 5007  
 J-14..7300 5009  
 K-14..7300 6001  
 L-14..7300 6002  
 M-14..7300 6003  
 N-14..7300 6006  
 B-15..7300 6007  
 C-15..7300 6008  
 D-15..7300 6010  
 E-15..7300 7001  
 F-15..7300 7002  
 G-15..7300 7003  
 H-15..7300 7006  
 I-15..7300 7007  
 J-15..7300 7008  
 K-15..7300 7009  
 L-15..7300 8001  
 M-15..7300 8005  
 N-15..7300 8006  
 B-16..7300 8008  
 C-16..7300 8009  
 D-16..7300 9000  
 E-16..7300 9002  
 F-16..7300 9003  
 G-16..7300 9005  
 H-16..7300 9006  
 I-16..7300 9007  
 J-16..7300 9008  
 K-16..7300 9009  
 L-16..7300 9010  
 M-16..7300 9011

7130 2208

REPORT DATE: 11-09-88  
DATE OF DATE: 09-30-88

U.S. DEPT OF INTERIOR - BUREAU OF LAND MANAGEMENT

N-6

PAGE: 285  
PON: PG130P2  
TOTAL PAGES: 15.524

FUND STATUS REPORT BY PROJECT

STATE REPORT

STATE : AK ALASKA

SUBACTIVITY: 7130 PUBLIC SURVEY  
PROJECT NUM: 2208

COLLECTIONS		EXECUTION		AVAIL	BAL	LESS
PRIOR YEAR	CURRENT YEAR	PRIOR YEAR	CURRENT YEAR	BALANCE	INDIR	COST
.00	1,450.44	.00	.00	1,450.44		
OBLIGATIONS TO DATE BY OBJECT CLASS						
1100, 1200	2300	2500	3100			
SALARY/BENEFITS		RENT COM UTIL		EQUIPMENT		OTHER
						TOTAL
CURRENT MONTH OBLIGATIONS BY TRANSACTION TYPE						
UNLIG OBLIG		ACCTS PAYABLE		DISBURSEMENTS		TOTAL
SELECTED DATA - CURRENT YEAR						
PAYROLL PROJECTION		LEAVE		TRAVEL		
UNITS OF ACCOMPLISHMENTS						
PROGRAM ELEMENT		OUTPUT		PLANNED		ACCOMPLISHED
NAME		MEASURE		YEAR-TO-DATE		YEAR-TO-DATE

DEC 22 1988

9613.1 (92)  
 USS 8902  
 Alaska  
 4291c

JPF 12-22

JPF 12/22

**Memorandum**

To: Accounting Technician (974A)  
 Through: Budget Officer (918)  
 From: Chief, Branch of Examination and Records (922)  
 Subject: Expenses, Public Survey Work

This is to inform you of the actual status of the monies for Activity 7130, Project No. 2208.

The original deposit of \$2,400 was made for survey costs by Betty Freed on May 29, 1986.

All charges have been made to Activity 7130, Project No. 2208, for survey and office costs. Please refund the unexpended funds from Activity 7130 for the following:

<u>Project No.</u>	<u>U.S. Survey No.</u>	<u>Amount</u>	<u>Applicant</u>
2208	8902	\$1,450.44	Betty Freed S.R. 1010 Nabesna Road Slana, Alaska 99586

The above refund is based upon the applicant's deposit, less survey cost and indirect cost.

No additional charges will be made against this project; therefore, it should be closed out and dropped from the printout.

*/s/* Larry D. Evans

RECTANGULAR SURVEY  
MONUMENTATION BY AUTO-SURVEY METHOD  
MEANDERS BY PHOTOINTERPRETATION

This plat and the field notes of the survey monumentation provide the entire survey record.

This plat represents the survey of the south and east boundaries of Township 14 North, Range 13 East, Kateel River Meridian, Alaska. The sub-divisional lines of the township were surveyed by protraction as shown on this plat.

This survey was executed by Richard R. Bidasolo and Robert A. Brown, Cadastral Surveyors, July 26, 1977, through August 27, 1978, in accordance with the specifications set forth in the Manual of Surveying Instructions, 1973, Special Instructions for Group No. 283, Alaska, dated November 8, 1976, approved April 18, 1977, and Assignment Instructions dated July 25, 1977, and May 4, 1978.

Corner positions of this survey were determined by the Auto-Surveyor method, utilizing control stations established by the U.S. Coast and Geodetic Survey, the U.S. Geological Survey, and the Bureau of Land Management. Monuments were set at protracted corner positions based upon the official Bureau of Land Management protraction diagrams.

The mean magnetic declination shown on this plat was obtained from U.S. Geological Survey topographic map "SHUNGNAK," Alaska, 1955 edition, with minor revisions in 1983.

The hydrography shown on this plat identifies the meanders along the ordinary high water line of water bodies segregated from the land area. The meanders are photogrammetrically interpreted and digitized from color infrared and rectified black and white aerial photography flown in July 1978, July 1979, July 1980, July 1981, and August 1981 by the National Aeronautics and Space Administration. The digital meander line data pictorially represent the meanders used to calculate the lot areas shown on the plat.

The orange fiberglass cones referred to in the field notes of the survey monumentation are 25 inches diameter at the base, 4 inches diameter at the top, and 24 inches high.

Acceptance of the survey does not purport to transfer any interest in submerged lands to which the State of Alaska is entitled under the Equal Footing Doctrine and Section 6(m) of the Alaska Statehood Act, P.L. 85-508, notwithstanding the use, location, or absence of meander lines to depict water bodies.

UNITED STATES DEPARTMENT OF THE INTERIOR  
 BUREAU OF LAND MANAGEMENT  
 Anchorage, Alaska

This plat is strictly conformable to the approved field notes, and the survey, having been correctly executed in accordance with the requirements of law and the regulations of this Bureau, is hereby accepted.

For the Director

\_\_\_\_\_  
 Date

Deputy State Director for Cadastral Survey,  
 Alaska

RECTANGULAR SURVEY  
WITH "MONUMENTATION JACKET"  
FIELD NOTES OF ABC SURVEY WITH  
PHOTOINTERPRETED MEANDERS

This plat and the field notes of the survey monumentation provide the entire survey record.

This plat represents the survey of the south boundary; and meanders of Township 58 South, Range 69 West, Seward Meridian, Alaska. The subdivisional lines of the township were surveyed by protraction as shown on this plat.

This survey was executed by Donald L. Dart, Cadastral Surveyor, April 1 through August 28, 1980, in accordance with the specifications set forth in the Manual of Surveying Instructions, 1973, Special Instructions for Group No. 232, Alaska, dated June 1, 1979, approved December 20, 1979, and Assignment Instructions dated March 13, 1980.

Corner positions of this survey were determined by field survey methods and Airborne Control survey methods, utilizing control stations established by the U.S. Coast and Geodetic Survey and the Bureau of Land Management. Monuments were set at protracted corner positions based on the official Bureau of Land Management protraction diagrams.

The mean magnetic declination shown on this plat was obtained from U.S. Geological Survey quadrangle map "STEPOVAK BAY (A-6)," Alaska, 1963 edition.

The hydrography shown on this plat identifies the meanders along the mean high tide line and ordinary high water line of water bodies segregated from the land area. The meanders are photogrammetrically interpreted and digitized from black and white aerial photography flown in July 1957 and June 1962 by the National Aeronautics and Space Administration. The digital meander line data pictorially represent the meanders used to calculate the areas shown on the plat.

Acceptance of the survey does not purport to transfer any interest in submerged lands to which the State of Alaska is entitled under the Equal Footing Doctrine and Section 6(m) of the Alaska Statehood Act, P.L. 85-508, notwithstanding the use, location, or absence of meander lines to depict water bodies.

UNITED STATES DEPARTMENT OF THE INTERIOR  
 BUREAU OF LAND MANAGEMENT  
 Anchorage, Alaska

This plat is strictly conformable to the approved field notes, and the survey, having been correctly executed in accordance with the requirements of law and the regulations of this Bureau, is hereby accepted.

For the Director

\_\_\_\_\_  
 Date

Deputy State Director for Cadastral Survey,  
 Alaska



RECTANGULAR SURVEY  
WITH "MONUMENTATION JACKET"  
FIELD NOTES OF  
AUTO-SURVEYOR METHOD

This plat and the field notes of the survey monumentation provide the entire survey record.

The north boundary was surveyed by protraction as shown on this plat under Group No. 309, Alaska, accepted September 20, 1974.

This plat represents the survey of the south and east boundaries and the monumentation of the north boundary of Township 50 South, Range 70 West, Seward Meridian, Alaska. The subdivisional lines of the township were surveyed by protraction as shown on this plat.

This survey was executed by Donald L. Dart, Cadastral Surveyor, April 1 through August 28, 1980, in accordance with the specifications set forth in the Manual of Surveying Instructions, 1973, Special Instructions for Group No. 232, Alaska, dated June 1, 1979, approved December 20, 1979, and Assignment Instructions dated March 13, 1980.

Corner positions of this survey were determined by the Auto-Surveyor method, utilizing control stations established by the U.S. Coast and Geodetic Survey and the Bureau of Land Management. Monuments were set at protracted corner positions based on the official Bureau of Land Management protraction diagrams.

The mean magnetic declination shown on this plat was obtained from U.S. Geological Survey quadrangle map "PORT MOLLER (D-1)," Alaska, 1963 edition.

Acceptance of the survey does not purport to transfer any interest in submerged lands to which the State of Alaska is entitled under the Equal Footing Doctrine and Section 6(m) of the Alaska Statehood Act, P.L. 85-508, notwithstanding the use, location, or absence of meander lines to depict water bodies.

UNITED STATES DEPARTMENT OF THE INTERIOR  
 BUREAU OF LAND MANAGEMENT  
 Anchorage, Alaska

This plat is strictly conformable to the approved field notes, and the survey, having been correctly executed in accordance with the requirements of law and the regulations of this Bureau, is hereby accepted.

For the Director

\_\_\_\_\_  
Date

Deputy State Director for Cadastral Survey,  
Alaska

RECTANGULAR SURVEY  
BY AUTO-SURVEYOR METHOD

This plat and the field notes represent the survey of the Third Standard Parallel South along the south boundary of Township 12 South through Range 46 West; the east and west boundaries; a portion of the subdivisional lines; and meanders of Township 12 South, Range 46 West, Seward Meridian, Alaska. A portion of the subdivisional lines of the township were surveyed by protraction as shown on this plat.

The survey was executed by Timothy A. Kent and Paul J. Hickey, Cadastral Surveyors, July 20, 1978, through July 18, 1986, in accordance with the specifications set forth in the Manual of Surveying Instructions, 1973; Special Instructions for Group No. 331, Alaska, dated December 1, 1977, approved April 10, 1978; and Assignment Instructions dated April 25, 1978, and May 19, 1986.

The hydrography shown on this plat was obtained by the Auto-Surveyor method.

Acceptance of the survey does not purport to transfer any interest in submerged lands to which the State of Alaska is entitled under the Equal Footing Doctrine and Section 6(m) of the Alaska Statehood Act, P.L. 85-508, notwithstanding the use, location, or absence of meander lines to depict water bodies.

UNITED STATES DEPARTMENT OF THE INTERIOR  
BUREAU OF LAND MANAGEMENT  
Anchorage, Alaska

This plat is strictly conformable to the approved field notes, and the survey, having been correctly executed in accordance with the requirements of law and the regulations of this Bureau, is hereby accepted.

For the Director

\_\_\_\_\_  
Date

Deputy State Director for Cadastral Survey,  
Alaska

RECTANGULAR SURVEY  
MONUMENTATION AND MEANDERS  
SURVEYED BY SEPARATE CONTRACTORS

The history of surveys is contained in the field notes.

This plat and the field notes represent the survey of the south boundary, a portion of the subdivisional lines, and a portion of the Eagle Village two mile boundary; and meanders of Township 2 South, Range 33 East, Fairbanks Meridian, Alaska. A portion of the subdivisional lines of the township were surveyed by protraction as shown on this plat.

By Presidential Proclamation No. 810 dated June 15, 1908, and Presidential Proclamation No. 1196 dated May 3, 1912, all unpatented, unappropriated public lands lying within 60 feet of the international boundary between the United States and Canada were withdrawn and set aside as a public reservation. The width of the 60-foot reservation is not subject to change by retracement or resurvey.

This survey was executed by Stanley S. McLane, Registered Alaska Land Surveyor No. LS-610, for McLane & Associates, Inc.; Maurice E. Lafferty, Registered Alaska Land Surveyor No. LS-1965, for Western Group, a Joint-Venture Partnership; Donald E. Mullikin, Registered Alaska Land Surveyor No. LS-4469, and Roger M. Imhoff, Registered Alaska Land Surveyor No. LS-5780, for Mullikin Surveys and Survey North, a Joint Venture, July 29, 1980, through September 1, 1986, in accordance with the specifications set forth in the Manual of Surveying Instructions, 1973; the Special Instructions dated April 20, 1979, approved August 8, 1979, and Supplemental Special Instructions dated November 6, 1985, approved January 13, 1986, for Group No. 356, Alaska; Contract No. YA-553-CTO-35 dated March 26, 1980, Notice to Proceed dated July 10, 1980; Contract No. YA-551-CT4-340099 dated September 27, 1984, Notice to Proceed dated June 14, 1985; and Contract No. YA-551-CT6-340068 dated June 9, 1986, Notice to Proceed dated June 16, 1986.

The hydrography shown on this plat identifies the meanders along the ordinary high water line of water bodies segregated from the land area. The digital meander line data pictorially represent the meanders used to calculate the areas shown on the plat.

Acceptance of the survey does not purport to transfer any interest in submerged lands to which the State of Alaska is entitled under the Equal Footing Doctrine and Section 6(m) of the Alaska Statehood Act, P.L. 85-508, notwithstanding the use, location, or absence of meander lines to depict water bodies.

UNITED STATES DEPARTMENT OF THE INTERIOR  
 BUREAU OF LAND MANAGEMENT  
 Anchorage, Alaska

This plat is strictly conformable to the approved field notes, and the survey, having been correctly executed in accordance with the requirements of law and the regulations of this Bureau, is hereby accepted.

For the Director

\_\_\_\_\_  
 Date

Deputy State Director for Cadastral Survey,  
 Alaska

RECTANGULAR SURVEY  
INVOLVING DEPENDENT RESURVEY OF INHOLDINGS  
AND COMBINED AUTO-SURVEYOR  
AND GROUND DETERMINED MEANDERS

The history of surveys is contained in the field notes.

This plat and the field notes represent the survey of a portion of the east boundary and a portion of the subdivisional and meander lines of Township 37 South, Range 63 East, Copper River Meridian, Alaska, and the dependent resurvey of Homestead Entry Survey No. 83 (U.S. Survey No. 1157) and Homestead Entry Survey 253 (U.S. Survey No. 2925).

This survey was executed by Kenneth W. Bays, Cadastral Surveyor, April 27 through September 18, 1983, in accordance with the specifications set forth in the Manual of Surveying Instructions, 1973, Special Instructions for Group No. 418, Alaska, dated March 14, 1983, approved April 20, 1983, and Assignment Instructions dated April 25, 1983.

Corners of this survey were established using conventional ground survey methods, utilizing control stations established by the U.S. Coast and Geodetic Survey, 1927 North American Datum. Monuments were set at protracted corner positions based on official Bureau of Land Management protraction diagrams.

The hydrography on this plat was obtained by a combination of conventional ground survey methods and the Auto-Surveyor method.

Acceptance of the survey does not purport to transfer any interest in submerged lands to which the State of Alaska is entitled under the Equal Footing Doctrine and Section 6(m) of the Alaska Statehood Act, P.L. 85-508, notwithstanding the use, location, or absence of meander lines to depict water bodies.

UNITED STATES DEPARTMENT OF THE INTERIOR  
 BUREAU OF LAND MANAGEMENT  
 Anchorage, Alaska

This plat is strictly conformable to the approved field notes, and the survey, having been correctly executed in accordance with the requirements of law and the regulations of this Bureau, is hereby accepted.

For the Director

\_\_\_\_\_  
 Date

Deputy State Director for Cadastral Survey,  
 Alaska

PLAT ONLY U.S. SURVEY  
WITHIN APPROVED PROTRACTION SURVEY

This plat contains the entire survey record.

Townships 2 and 3 South, Ranges 39 and 40 West, Seward Meridian, were surveyed by protraction under Group No. 310, Alaska, in 1974.

This survey was executed by Brock R. Clifford, Cadastral Surveyor, June 7 through June 10, 1988, in accordance with the specifications set forth in the Manual of Surveying Instructions, 1973, Amended Special Instructions dated April 6, 1988, approved May 11, 1988, and Assignment Instructions dated May 16, 1988.

Field assistants were:

Robert W. Puryear, Cadastral Surveyor  
John P. Besse, Surveying Technician

Area: 159.97 Acres.

The azimuth was obtained from direct observations of the sun, using the hour angle method, and refers to the true meridian.

The approximate geographic position of the witness corner to corner No. 1, a meander corner, as scaled from U.S. Geological Survey quadrangle map "DILLINGHAM (D-1)," Alaska, 1954 edition, is:

Latitude: 59°57.2' North  
Longitude: 156°04.5' West

NAD 27

The mean magnetic declination was obtained from U.S. Geological Survey quadrangle map "DILLINGHAM (D-1)," Alaska, 1954 edition.

This survey is situated on the left bank of the Koktuli River, approximately 42 miles northwesterly of Nondalton, Alaska.

The land is on a rolling northeasterly slope; supporting scattered small spruce, with poplar and willow along the river banks.

Acceptance of the survey does not purport to transfer any interest in submerged lands to which the State of Alaska is entitled under the Equal Footing Doctrine and Section 6(m) of the Alaska Statehood Act, P.L. 85-508, notwithstanding the use, location, or absence of meander lines to depict water bodies.

UNITED STATES DEPARTMENT OF THE INTERIOR  
BUREAU OF LAND MANAGEMENT  
Anchorage, Alaska

The survey represented by this plat, having been correctly executed in accordance with the requirements of law and the regulations of this Bureau, is hereby accepted.

For the Director

\_\_\_\_\_  
Date

Deputy State Director for Cadastral Survey,  
Alaska

PLAT ONLY U.S. SURVEY  
WITHIN APPROVED RECTANGULAR SURVEY

This plat contains the entire survey record.

The exterior boundaries and a portion of the subdivisional lines of Township 15 South, Range 52 West, Seward Meridian, were surveyed by Timothy A. Kent, Cadastral Surveyor, in 1978.

This survey was executed by Paul L. Moss, Cadastral Surveyor, August 3 through August 23, 1988, in accordance with the specifications set forth in the Manual of Surveying Instructions, 1973, Special Instructions dated May 4, 1983, approved August 24, 1983, and Assignment Instructions dated April 22, 1988.

Field assistants were:

Robert H. Einarsen, Jr., Land Surveyor  
Thad S. Robertson, Student Trainee (LS)  
Harry W. Baltzer, Surveying Technician

Area: 144.97 Acres.

The azimuth was obtained from direct observations of the sun, using the hour angle method, and refers to the true meridian.

The geographic position of the witness corner to corner No. 4, as determined from a tie to the witness corner to the meander corner of sections 7 and 12, Townships 15 South, Ranges 51 and 52 West, Seward Meridian, is:

Latitude: 58°53'49.67" North  
Longitude: 157°51'38.72" West      NAD 27

The mean magnetic declination was obtained from U.S. Geological Survey quadrangle map "NAKNEK (D-6)," Alaska, 1952 edition.

This survey is situated on the left bank of the Nushagak River, approximately 5 miles southwesterly of the village of Portage Creek, Alaska.

The land is rolling tundra; covered with a medium undergrowth of alder and willow, with scattered spruce and birch trees.

The soil is sandy loam.

Access to the survey was by helicopter and boat.

Acceptance of the survey does not purport to transfer any interest in submerged lands to which the State of Alaska is entitled under the Equal Footing Doctrine and Section 6(m) of the Alaska Statehood Act, P.L. 85-508, notwithstanding the use, location, or absence of meander lines to depict water bodies.

UNITED STATES DEPARTMENT OF THE INTERIOR  
BUREAU OF LAND MANAGEMENT  
Anchorage, Alaska

The survey represented by this plat, having been correctly executed in accordance with the requirements of law and the regulations of this Bureau, is hereby accepted.

For the Director

Deputy State Director for Cadastral Survey,  
Alaska

\_\_\_\_\_  
Date

PLAT ONLY U.S. SURVEY  
WITHIN UNAPPROVED RECTANGULAR SURVEY

This plat contains the entire survey record.

The monumentation of the south boundary of Township 13 North, Range 8 West, Fairbanks Meridian, was established by Tommy A. Noble, Cadastral Surveyor, in 1980 under Special Instructions for Group No. 345, Alaska.

This survey was executed by Christopher D. Wiita, Cadastral Surveyor, August 22 through September 1, 1988, in accordance with the specifications set forth in the Manual of Surveying Instructions, 1973, Special Instructions dated September 14, 1987, approved October 26, 1987, and Assignment Instructions dated April 14, 1988.

Field assistants were:

Steve W. Schwarz, Student Trainee (LS)  
James C. Davis, Surveying Technician

Area: 5.00 Acres.

The azimuth was obtained by direct observations of the sun, using the hour angle method, and refers to the true meridian.

The geographic position of the witness corner to corner No. 1, a meander corner, on the right bank of the Yukon River, as determined from the same control data used to establish the witness corner to the meander corner of section 34, Township 13 North, Range 8 West, Fairbanks Meridian, on the left bank of the Yukon River, is:

Latitude: 65°52'18.22" North  
NAD 27  
Longitude: 149°21'29.98" West

The mean magnetic declination was obtained from U.S. Geological Survey quadrangle map "LIVENGOOD (D-5)," Alaska, 1952 edition, photorevised in 1975.

This survey is situated on the right bank of the Yukon River, approximately 10 miles easterly of the Yukon River Bridge crossing.

The survey is located on a gently rolling southwesterly slope, rising to an elevation of 150 feet above the level of the river at corner No. 2. The timber is primarily poplar, cottonwood, and scattered spruce and birch with little undergrowth. Dense undergrowth of alder, willow, and berry bush is found along the Yukon River and the western boundary of the survey which follows the general course of a seasonal drainage area.

The soil is generally fine silt, with some sandy humus found on the lower land adjacent to the seasonal drainage area and the Yukon River.

Acceptance of the survey does not purport to transfer any interest in submerged lands to which the State of Alaska is entitled under the Equal Footing Doctrine and Section 6(m) of the Alaska Statehood Act, P.L. 85-508, notwithstanding the use, location, or absence of meander lines to depict water bodies.

UNITED STATES DEPARTMENT OF THE INTERIOR  
BUREAU OF LAND MANAGEMENT  
Anchorage, Alaska

The survey represented by this plat, having been correctly executed in accordance with the requirements of law and the regulations of this Bureau, is hereby accepted.

For the Director

Deputy State Director for Cadastral Survey,  
Alaska

\_\_\_\_\_  
Date

U.S. SURVEY  
WITH FIELD NOTES

SITUATED

ON

AN UNNAMED LAKE

APPROXIMATELY 38 MILES NORTHWESTERLY

OF

NONDALTON, ALASKA

APPROXIMATE GEOGRAPHIC POSITION

OF

THE WITNESS CORNER TO CORNER NO. 1

A MEANDER CORNER, IS:

LATITUDE: 60°06.7' NORTH

LONGITUDE: 155°54.6' WEST

NAD 27

AREA: 159.98 ACRES

SURVEYED

BY

BROCK R. CLIFFORD, CADASTRAL SURVEYOR

JUNE 20 THROUGH JUNE 25, 1988

UNDER SPECIAL INSTRUCTIONS

DATED AUGUST 16, 1983

APPROVED APRIL 3, 1984

AMENDED SPECIAL INSTRUCTIONS

DATED MAY 12, 1988

APPROVED JUNE 20, 1988

Acceptance of the survey does not purport to transfer any interest in submerged lands to which the State of Alaska is entitled under the Equal Footing Doctrine and Section 6(m) of the Alaska Statehood Act, P.L. 85-508, notwithstanding the use, location, or absence of meander lines to depict water bodies.

UNITED STATES DEPARTMENT OF THE INTERIOR  
BUREAU OF LAND MANAGEMENT  
Anchorage, Alaska

This plat is strictly conformable to the approved field notes, and the survey, having been correctly executed in accordance with the requirements of law and the regulations of this Bureau, is hereby accepted.

For the Director

Deputy State Director for Cadastral Survey,  
Alaska

\_\_\_\_\_  
Date



U.S. SURVEY  
WITH FIELD NOTES INVOLVING RETRACEMENT

AND THE RETRACEMENT OF A PORTION OF  
 U.S. SURVEY NO. 4529 AND PORTIONS OF LOTS 1, 2, AND 3  
 U.S. SURVEY NO. 4740

SITUATED

ON

THE EASTERLY SHORE OF ELDRED PASSAGE  
 ON KACHEMAK BAY

APPROXIMATELY 9 MILES NORTHEASTERLY

OF

SELDOVIA, ALASKA

GEOGRAPHIC POSITION

OF

THE WITNESS CORNER TO CORNER NO. 1, IDENTICAL WITH THE WITNESS CORNER  
 TO CORNER NO. 1, U.S. SURVEY NO. 4529, BOTH MEANDER CORNERS, IS:

LATITUDE: 59°30'45" NORTH

LONGITUDE: 151°27'10" WEST

NAD 27

AREA: 109.88 ACRES

SURVEYED

BY

BROCK R. CLIFFORD, CADASTRAL SURVEYOR

JUNE 8 THROUGH JUNE 22, 1987

UNDER SPECIAL INSTRUCTIONS

DATED JANUARY 9, 1986

APPROVED MARCH 10, 1986

Acceptance of the survey does not purport to transfer any interest in submerged lands to which the State of Alaska is entitled under the Equal Footing Doctrine and Section 6(m) of the Alaska Statehood Act, P.L. 85-508, notwithstanding the use, location, or absence of meander lines to depict water bodies.

UNITED STATES DEPARTMENT OF THE INTERIOR  
 BUREAU OF LAND MANAGEMENT  
 Anchorage, Alaska

This plat is strictly conformable to the approved field notes, and the survey, having been correctly executed in accordance with the requirements of law and the regulations of this Bureau, is hereby accepted.

For the Director

Deputy State Director for Cadastral Survey,  
 Alaska State Office  
 Survey Examination and Distribution Handbook

\_\_\_\_\_  
 Date

4/02/90

