

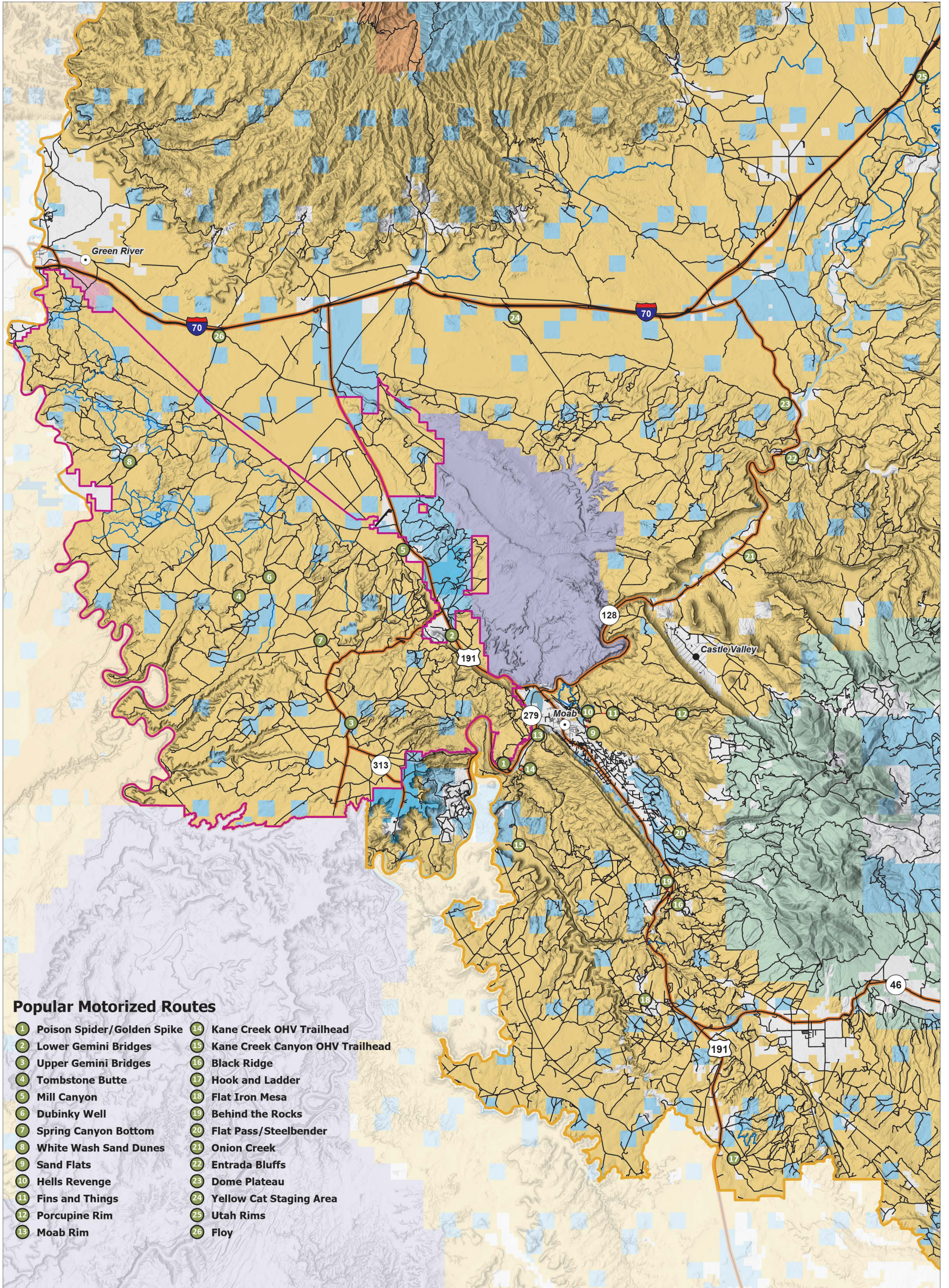


Moab Field Office - Motorized Routes

Bureau of Land Management, Utah
Moab Field Office
82 East Dogwood
Moab, UT 84532



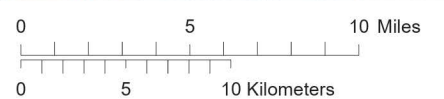
10/26/2023



Popular Motorized Routes

- | | |
|------------------------------|------------------------------------|
| 1 Poison Spider/Golden Spike | 14 Kane Creek OHV Trailhead |
| 2 Lower Gemini Bridges | 15 Kane Creek Canyon OHV Trailhead |
| 3 Upper Gemini Bridges | 16 Black Ridge |
| 4 Tombstone Butte | 17 Hook and Ladder |
| 5 Mill Canyon | 18 Flat Iron Mesa |
| 6 Dubinky Well | 19 Behind the Rocks |
| 7 Spring Canyon Bottom | 20 Flat Pass/Steelbender |
| 8 White Wash Sand Dunes | 21 Onion Creek |
| 9 Sand Flats | 22 Entrada Bluffs |
| 10 Hells Revenge | 23 Dome Plateau |
| 11 Fins and Things | 24 Yellow Cat Staging Area |
| 12 Porcupine Rim | 25 Utah Rims |
| 13 Moab Rim | 26 Floy |

- | | | |
|----------------------------------|--|--|
| State and Federal Highways | BLM Wilderness Area | State |
| Motorized Routes | Bureau of Land Management (BLM) | State Parks and Recreation |
| Size-Restricted Motorized Routes | Indian Reservation (IR) | State Wildlife Reserve/Management Area |
| Field Office Boundary | Military Reservations and Corps of Engineers | US Forest Service (USFS) |
| Labyrinth/ Gemini Bridges TMA * | National Park Service (NPS) | City |
| | Private | Town |



No warranty is made by the Bureau of Land Management as to the accuracy, reliability, or completeness of these data for individual use or aggregate use with other data. Original data were compiled from various sources. This information may not meet National Map Accuracy Standards. This product was developed through digital means and may be updated without notification.

* The Labyrinth Rims/Gemini Bridges Travel Management Area includes 22% of the available routes on BLM-managed public lands. This map covers a large portion of the Moab Field Office. However, to improve readability, it is zoomed-in to show areas with higher recreational interest so not all public lands managed by the Moab Field Office are shown. Some less popular trail heads are not labeled on this map. Call the Moab Field Office with specific trail questions.