

# Crafting Successful Partnerships



ARKANSAS  
HEADWATERS  
RECREATION AREA



# Panelists

Kalem Lenard: BLM – Royal Gorge Field Office

Greg Felt: Chaffee Board of County  
Commissioners

Tom Waters: AHRA Manager



# Background

---

Increasing recreation on the Arkansas River and its surrounding area led to a growing need for management. In 1989, the Arkansas Headwaters Recreation Area was established between government agencies and commercial recreation partners to address this need. For the last 30 years, this collaboration has successfully navigated the challenges of dramatically increased recreation across a wide spectrum of public use cases.





Topic one

Managing a multi-  
agency environment



## Topic two

Missions, procedures,  
and regulations



Topic three

The public response

Thank you

---

BLM – Colorado

Rocky Mountain District





U.S. Department of the Interior  
Bureau of Land Management



## CPW AND BLM- A KEY PARTNERSHIP FOR THE OHV COMMUNITY

- Grand Junction Field Office





OHV Sticker  
Program



GJFO & NCA  
Good  
Management  
Grants



Equipment  
Operator  
Grant



Partnerships



Accomplishments



# CPW STICKER PROGRAM



Registration Fees help BLM build capacity:

- Monitoring and Inventory
- Trail construction & maintenance
- Trail signs & mapping
- Education and Outreach

COLORADO PARKS & WILDLIFE

## 2022 Off-Highway Vehicle Grant Award Program

Your OHV Registration Dollars  
at Work for You!



■ \$73 million from OHV registration fees has been allocated for "on the ground" improvements for motorized recreation by this 32 year program.

■ \$5,922,280 was allocated to motorized recreation projects across the state in 2022.

■ Work projects begin in the summer of 2022.

■ Look for the OHV Program's acknowledgment of your "OHV Registration Dollars at Work" on your favorite trail.



# GOOD MANAGEMENT GRANTS

- \$101,00 for GJFO
- \$87,000 for NCAs
- Monitoring and Inventory
- Trail Maintenance and Construction
- Education and Outreach
- Expanding Opportunities





## EQUIPMENT OPERATOR GRANT

- \$87,500
- Trail Maintenance and Construction
- Additional funding for purchasing equipment





## KEY PARTNERSHIPS

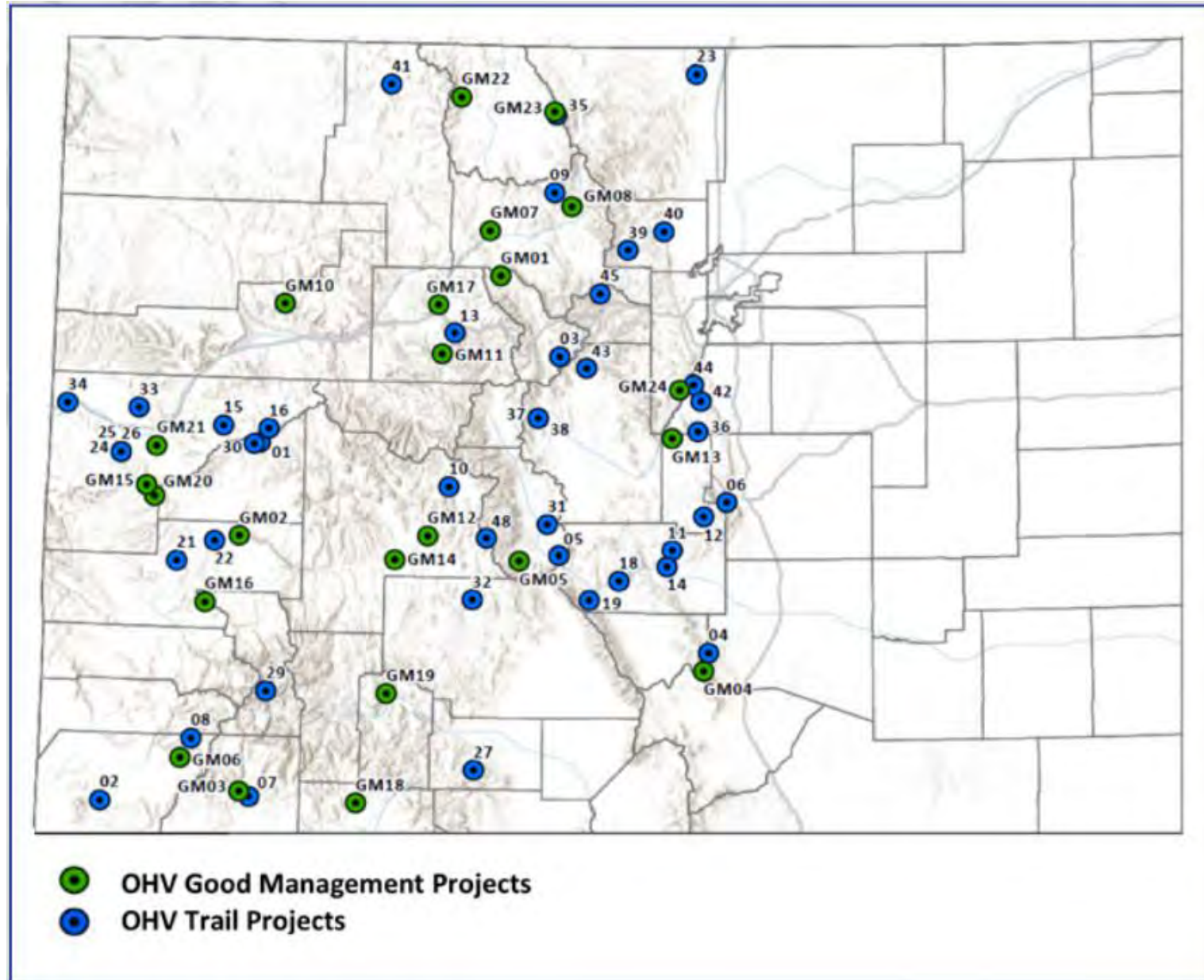




# SUCCESS STORY

## Gibbler Gulch Project





# COLORADO'S OUTDOOR ECONOMY

## AN 11.6 BILLION DOLLAR INDUSTRY

Activity	2021 Economic contribution	Increase over pre-pandemic level (2019)
Snow activities	\$1.27 BILLION	-19%
RVing	\$474 million	37%
Boating/fishing	\$403 million	3%
Climbing/hiking/tent camping	\$167 million	49%
Motorcycling/ATVing	\$138 million	23%
Equestrian	\$135 million	2%
Hunting/shooting/trapping	\$122 million	24%
Bicycling	\$104 million	44%

Data: Bureau of Economic Analysis

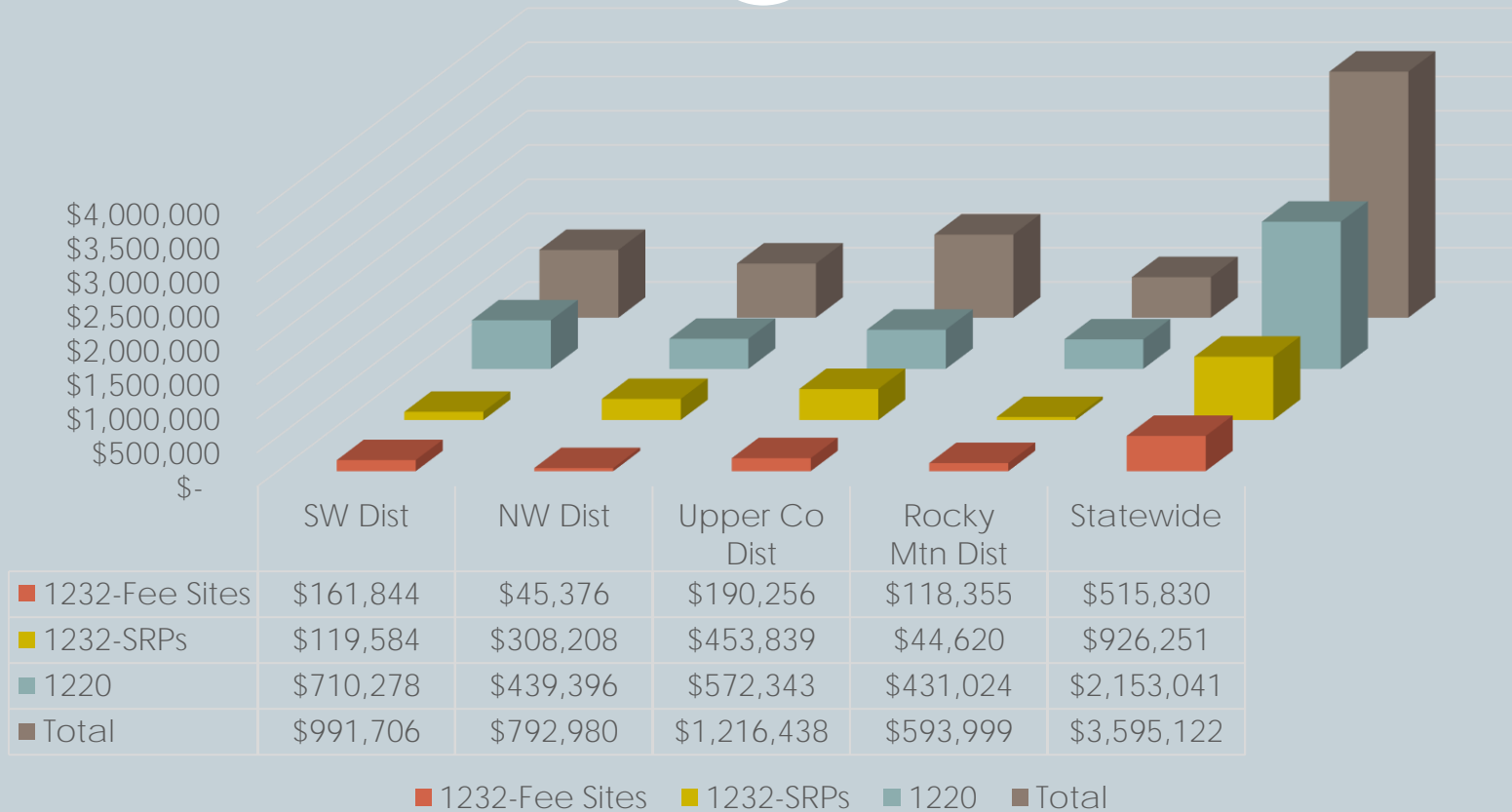


# Colorado Recreation Resource Advisory Committee Tasks



REFRESHER FOR  
BLM COLORADO RESOURCE ADVISORY COUNCIL  
MARCH 29, 2023

# Colorado Fee Revenue (RUPs, SRPs) and 1220 allocation



\*Statewide 1220 total does not include overhead held at State or District levels

\*\*1220 allocation based on 2023 PTA

\*\*\*1232 based on FY22 revenue recorded as of 12/18/2022

# Federal Lands Recreation Enhancement Act (FLREA)



- First enacted in 2004
- 10-year authority, which has been extended
- **Among other things, it started the “America the Beautiful” Pass** system, established fee free days, and allows BLM to collect certain types of Recreation Fees
- Directed the Interior Secretary to create Resource Advisory Councils
- Resource Advisory Councils are directed to publicly review fee proposals themselves or have a Recreation Resource Advisory Committee (RRAC) do it for them

# What a Recreation RAC does...



Make specific recommendations on :

- Standard Amenity Fees (National Conservation Areas, destination visitor or interpretive centers, and areas with amenities such as toilets, parking, trash receptacles, picnic tables, interpretation, and security)
- Expanded Amenity Fees (developed campgrounds, highly developed boat launches, rentals, enhanced interpretive programs, and reservation services)
- Special Recreation Permit (SRP) Fees (generally don't bring these to the RRAC). Fees are set.

# BLM RRAC Personnel



BLM Designated Federal Official

- District Managers

BLM RRAC Coordinator

- Public Affairs Officer

State Office proposal coordination

- State Director (Resources Deputy State Director)

Field Office Level

Field Office Manager (FO Recreation Program lead)

# RRAC Fee Review Process



1. **Field Office** staff develops proposal
2. Field Office staff seeks public input
3. Field Office presents to State Director
4. **Headquarters** Recreation staff reviews proposal
5. BLM forwards to RRAC
6. RRAC Coordinator Posts Notice in **FRN** and Local Paper at least one week prior to meeting
7. **RRAC reviews and recommends**
8. BLM implements, modifies, or withdraws proposal

# Fee Review Documents



RRACs will review these documents:

- New Fee or Fee Change Proposal
- Summary of Public Involvement
- Estimated Fee Revenue Expenditure
- Estimated Non-Fee Revenue Expenditure

BLM fee proposals always include a **Business Plan.**

# New Business Plans being developed.



- Uncompahgre Field Office
- Royal Gorge Field Office
- Dominguez-Escalante National Conservation Area
- Note: BLM Colorado uses 100% on-site



# RRAC Review Questions to be asked:



- Does the proposed fee comply with REA?
- Is there adequate public support for the fee?
- Will the proposed fee benefit visitors?
- Will the proposed fee benefit communities?
- Is the proposed fee reasonable?
- Does the RRAC recommend to affirm, modify, or not affirm the proposal?

# For more information



<https://www.blm.gov/programs/recreation/permits-and-fees>

Alan Bittner

Colorado BLM Deputy State Director - Resources

303-239-3768

[abittner@blm.gov](mailto:abittner@blm.gov)

Tim Finger

Colorado BLM REA Coordinator and Recreation Program Manager

303-239-3732

[tfinger@blm.gov](mailto:tfinger@blm.gov)



U.S. Department of the Interior  
Bureau of Land Management

# Canyons of the Ancients National Monument

Keep Colorado Wild Fee Proposal



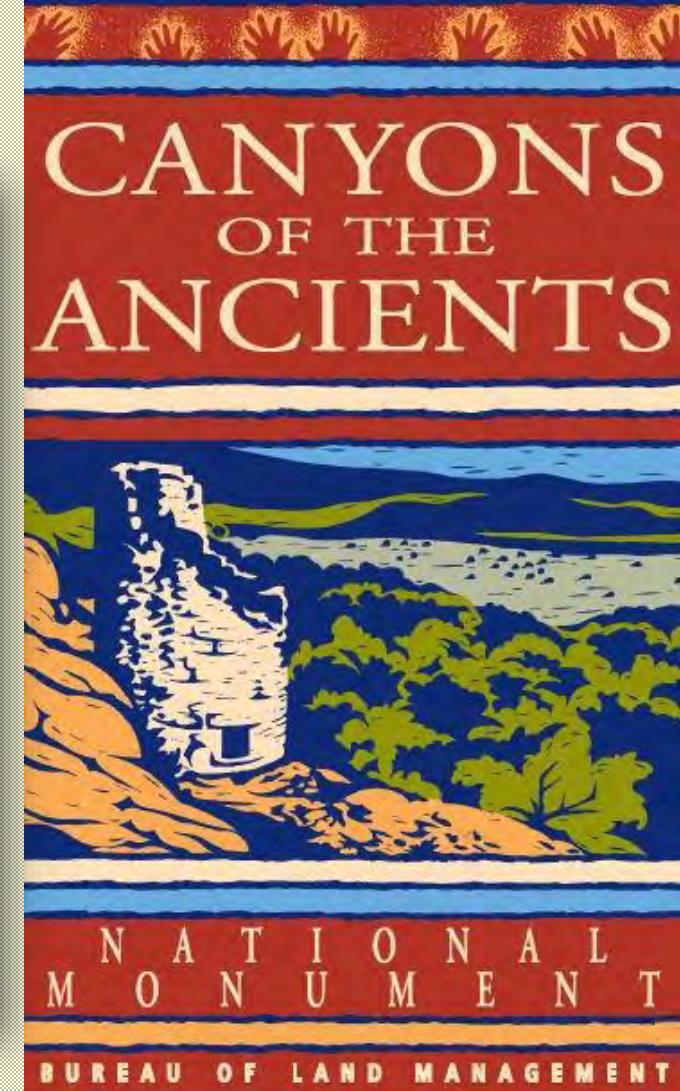
# Canyons of the Ancients Local Landscape of National Significance





U.S. Department of the Interior  
Bureau of Land Management

# Cultural Sites Open to the Public for Exploration, Education, and Inspiration





U.S. Department of the Interior  
Bureau of Land Management

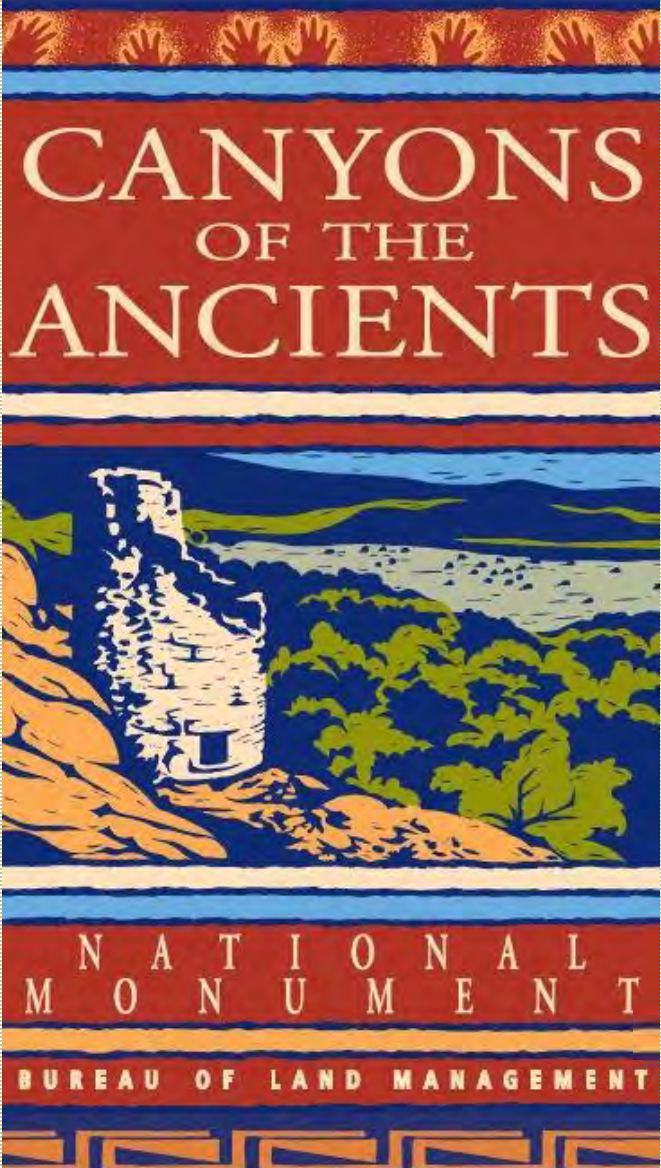
# Visitor Center & Museum

Hard-Working Complex Serving a Multitude of Purposes





U.S. Department of the Interior  
Bureau of Land Management



**Hands-on displays provide stimulating options for all ages.**



# Visitor Center & Museum

## Visitation

- 2019: 26,447
- 2022: 33,084

## Funds Generated

- 2019: \$33,000
- 2022: \$25,000

**Entrance fee increased from \$3 to \$7 per person in 2020**







U.S. Department of the Interior  
Bureau of Land Management

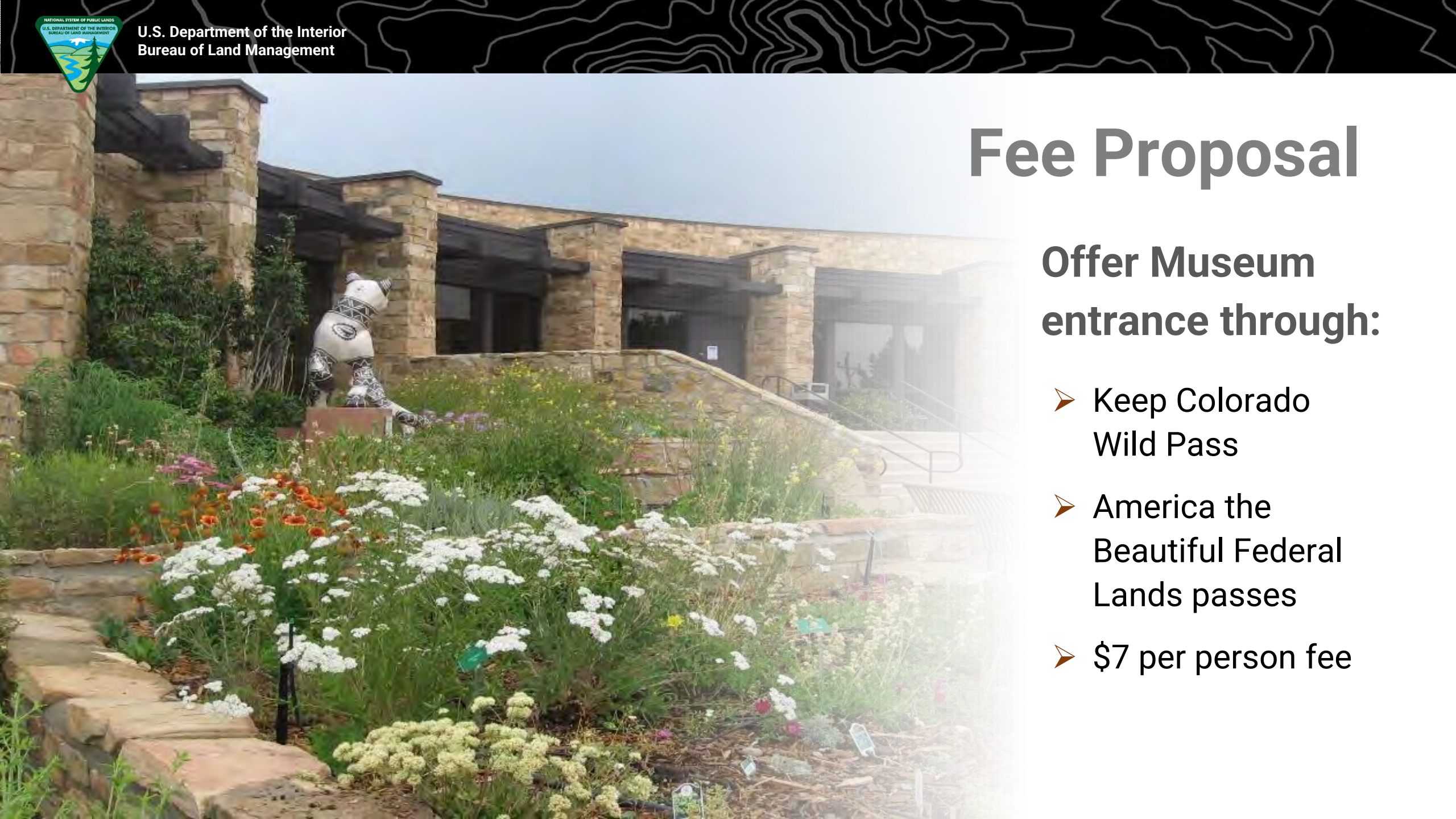
# Keep Colorado Wild

COLORADO

**The \$29 pass:**

- Includes entry to Colorado state parks
- Protects wildlife, lands and water
- Supports search and rescue
- Funds trails and local projects
- Helps make the outdoors safe and available to all





# Fee Proposal

**Offer Museum  
entrance through:**

- Keep Colorado Wild Pass
- America the Beautiful Federal Lands passes
- \$7 per person fee



# Potential Benefits

- State funding to support Monument programs
- Increased awareness of the Monument
- Enhanced opportunities to provide educational offerings to visitors.





# Concerns & Considerations

- How much would visitation increase?*
- Would visitation to backcountry sites increase too?*



## Outreach

- 26 Affiliated Tribes - 19 Pueblo tribes; 3 Ute tribes; Hopi, Zuni, Navajo, and Jicarilla Apache tribes
- Montezuma Board of County Commissioners





U.S. Department of the Interior  
Bureau of Land Management



**Questions?**





U.S. Department of the Interior  
Bureau of Land Management

## Kremmling Field Office

North Sand Hills Special Recreation Management Area (SRMA)  
Keep Colorado Wild Pass Fee Proposal





# North Sand Hills is the only location in Colorado to ride off road vehicles on sand dunes!

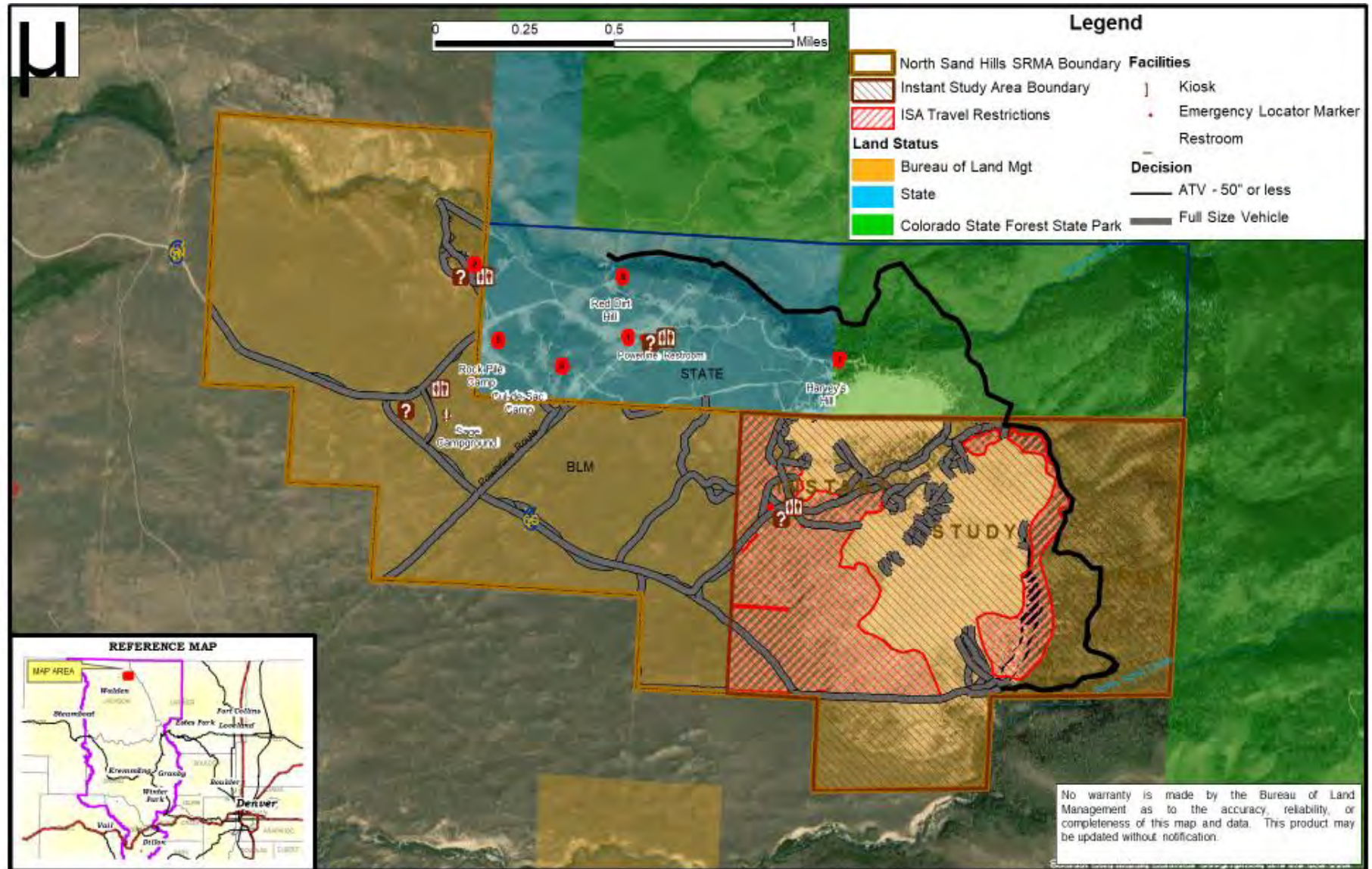


Total visitor days = 63,387/year  
Use is concentrated on Weekends and Holidays  
Holiday Weekend use average = 1,500/Day  
Vehicles=20,320/year





# North Sand Hills SRMA





## **Keep Colorado Wild Pass Fee Structure**

- All vehicles with Keep Colorado Wild Pass (KCWP) have no additional day use fees
- Day use fees applied to out of state vehicles or vehicles that opted out of KCWP starting 2024
- Collection of overnight camping fees for all
- Signage identifying funding through the KCWP

## **Funding under Keep Colorado Wild Pass**

- \$200,000 yearly funding from KCWP, funding amount re-evaluated yearly and adjusted based on use levels. Funds would go to maintenance, signage, staffing, emergency services agreement with Jackson County, and other cooperating agency agreements.

## **Recreation Area Management**

- BLM maintains administrative control



# Proposed Fee Structure

Daily Permit Per Single Vehicle	Annual Permit Per Vehicle	Vehicle day rate	Current Amenities	Future Amenities	Anticipated Revenue
Keep Colorado Wild Pass Proposal	Free	Free	Vault toilets	<ul style="list-style-type: none"> <li>• Trash removal</li> <li>• Additional Vault Toilets</li> <li>• Admin site with camp host</li> <li>• Fire rings</li> <li>• Picnic tables</li> <li>• Staging area</li> </ul>	<p>\$200,000</p> <p><b>Plus Camp Fees</b></p>
No Keep Colorado Wild Pass	\$100/vehicle	\$10/vehicle \$5/OHV	Vault toilets	<ul style="list-style-type: none"> <li>• Trash removal</li> <li>• Additional Vault Toilets</li> <li>• Admin site with camp host</li> <li>• Fire rings</li> <li>• Picnic tables</li> <li>• Staging area</li> </ul>	<p>\$200,000</p> <p><b>Plus Camp Fees</b></p>



# Questions





# RGFO Keep Colorado Wild Pass Partnership - A Thought Experiment -





**Kalem Lenard**  
**Assistant Field Manager/  
Browns Canyon National Monument Manager**  
**Royal Gorge Field Office**  
**[jlenard@blm.gov](mailto:jlenard@blm.gov)**  
**719-433-8486**



# RGFO Keep Colorado Wild Pass Partnership - A Thought Experiment -

- Criteria Considered
  - High levels of visitor use in definable area





# RGFO Keep Colorado Wild Pass Partnership - A Thought Experiment -



- Criteria Considered
  - Planning support; stakeholder and elected official buy in





# RGFO Keep Colorado Wild Pass Partnership - A Thought Experiment -

- Criteria Considered
  - Resource and Resource Use Compatibility





# RGFO Keep Colorado Wild Pass Partnership - A Thought Experiment -

- Criteria Considered
  - Capacity Concerns





U.S. Department of the Interior  
Bureau of Land Management

# Guffey Gorge (Paradise Cove)





# Criteria - High Levels of Visitor Use





# Criteria - Management Plan Support

- Goal 1: Reduce risks to public health and safety.
- Goal 2: Reduce the impacts to resources
  - Work toward **managing capacity** as the number of visitors in the area continues to increase.



## Goal 3: Identify strategies to fund management needs

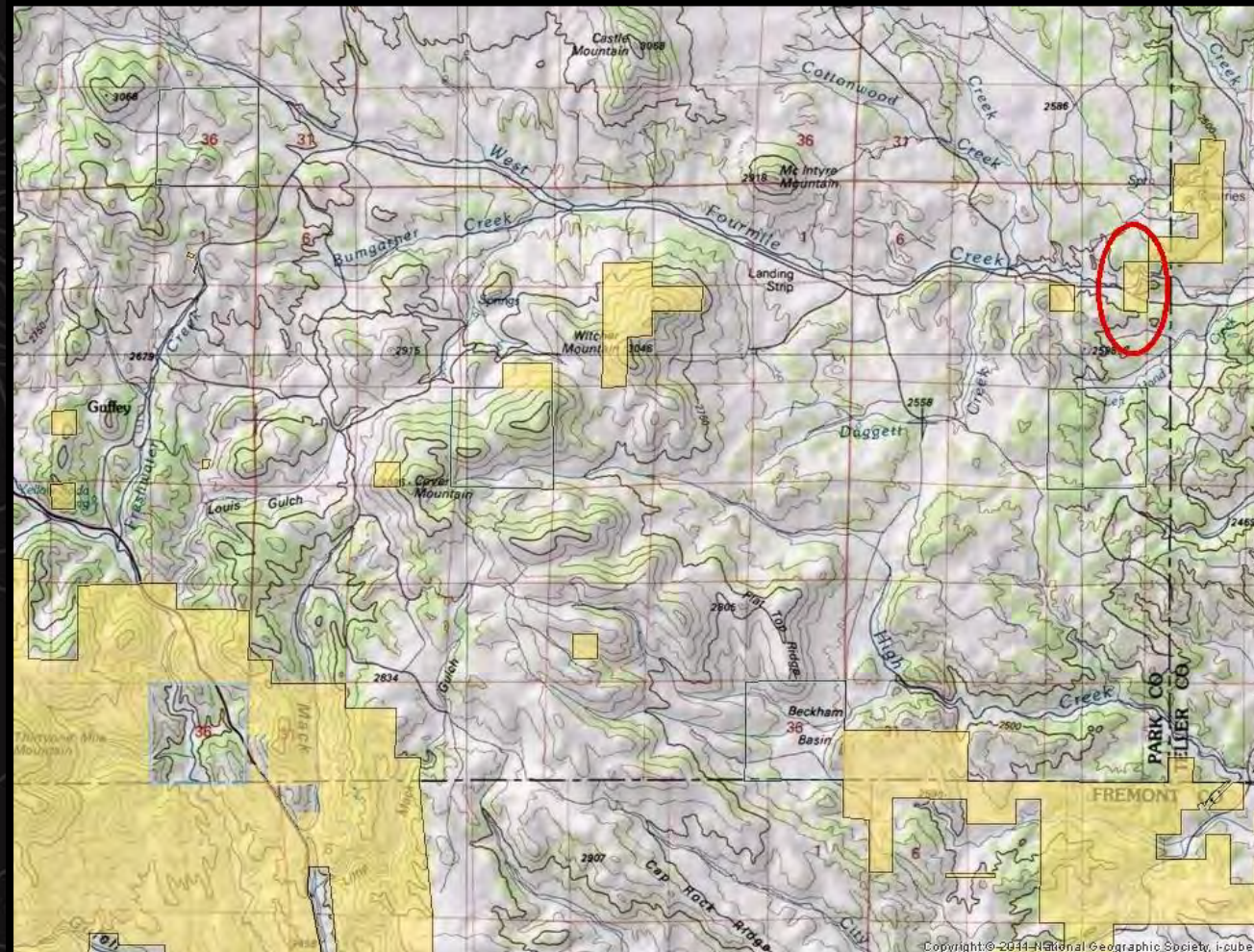
Reduce costs to government to manage the site through a **user fee and/or partnership opportunity.**



Goal 4: Continue to provide recreational opportunities for visitors in a manner that does not significantly impact other resources or recreation uses, remains consistent with the current Land Use Plan and balances the desires of the public.



# Criteria - Management Plan Support





# Criteria – Resource and Resource Use Compatibility

- No Grazing within the primary area of recreation use
- Recreation use impacting riparian and vegetation resources



2013



2020

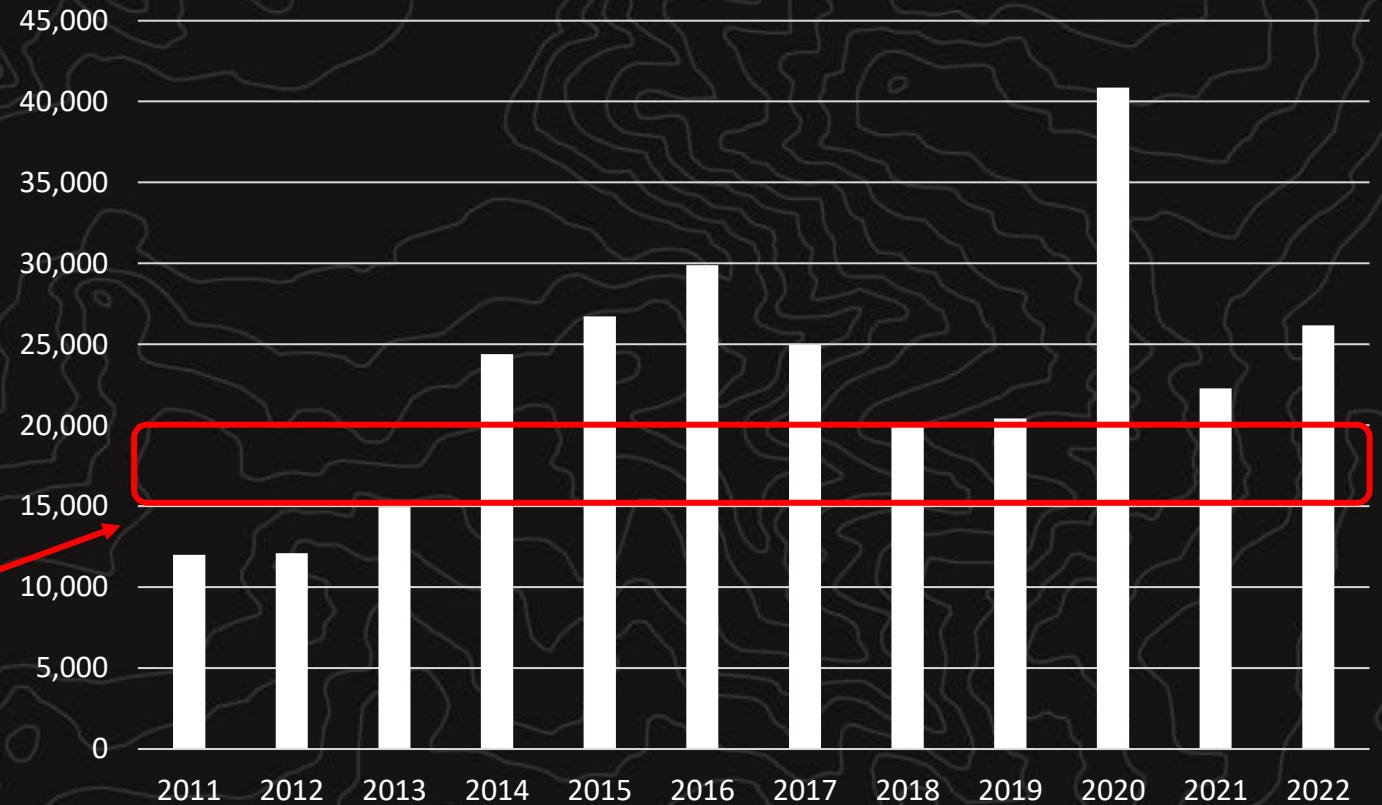




# Criteria – Capacity Concerns



## Annual # of Visitors 2011-2022



Approximate Capacity of Site Based on staff experience





# Criteria – Capacity Concerns

## Ability to Manage

**Revenue @ \$6/vehicle = ± \$25k annually**

**Cost to Manage = ± \$56k annually**

**\$30k - 7 day a week staff coverage**

**\$9k – 7 days a week vehicle costs**

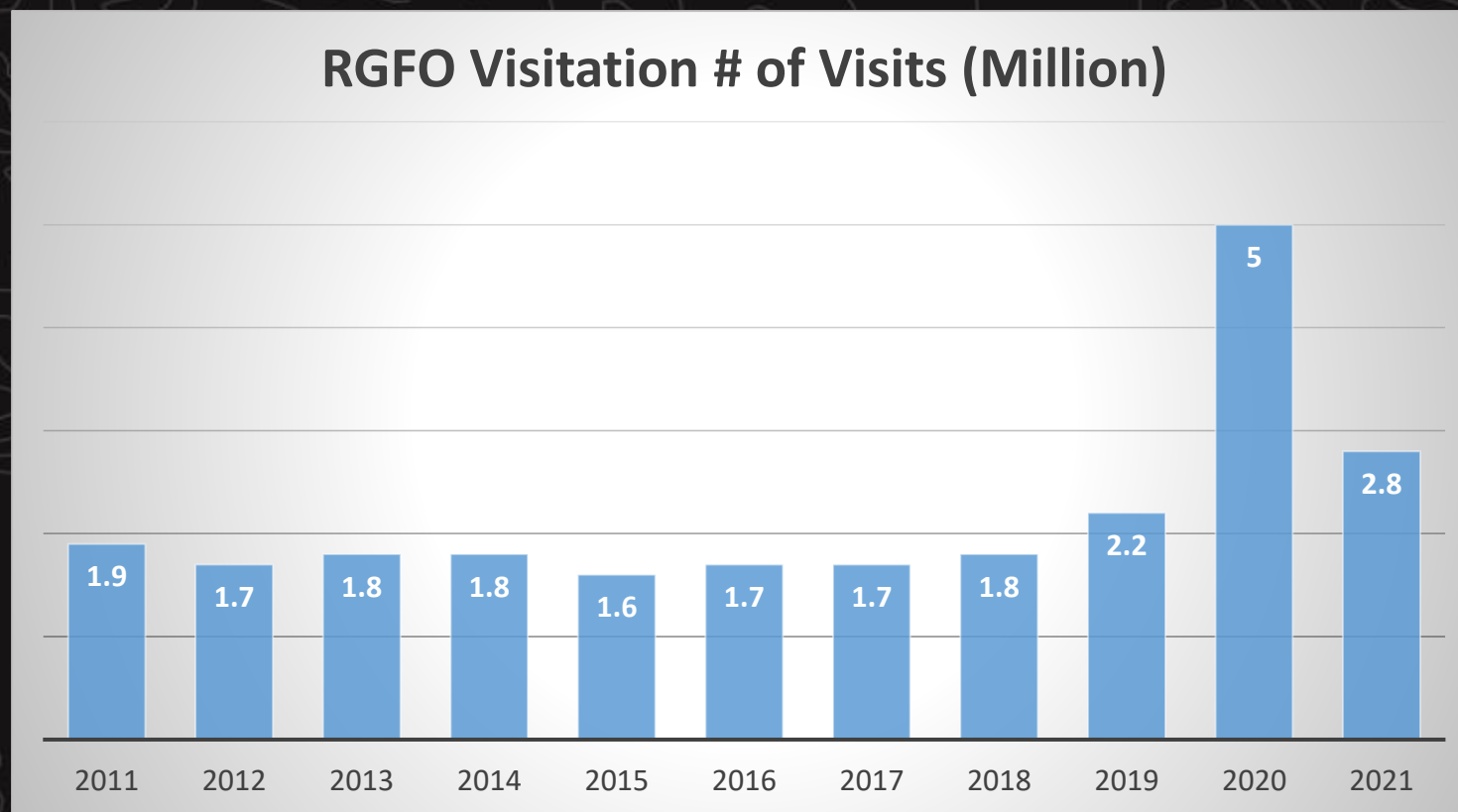
**\$2k – supplies**

**\$5k – toilet pumping and trash services**

**\$10k – Law enforcement support (details and agreements)**



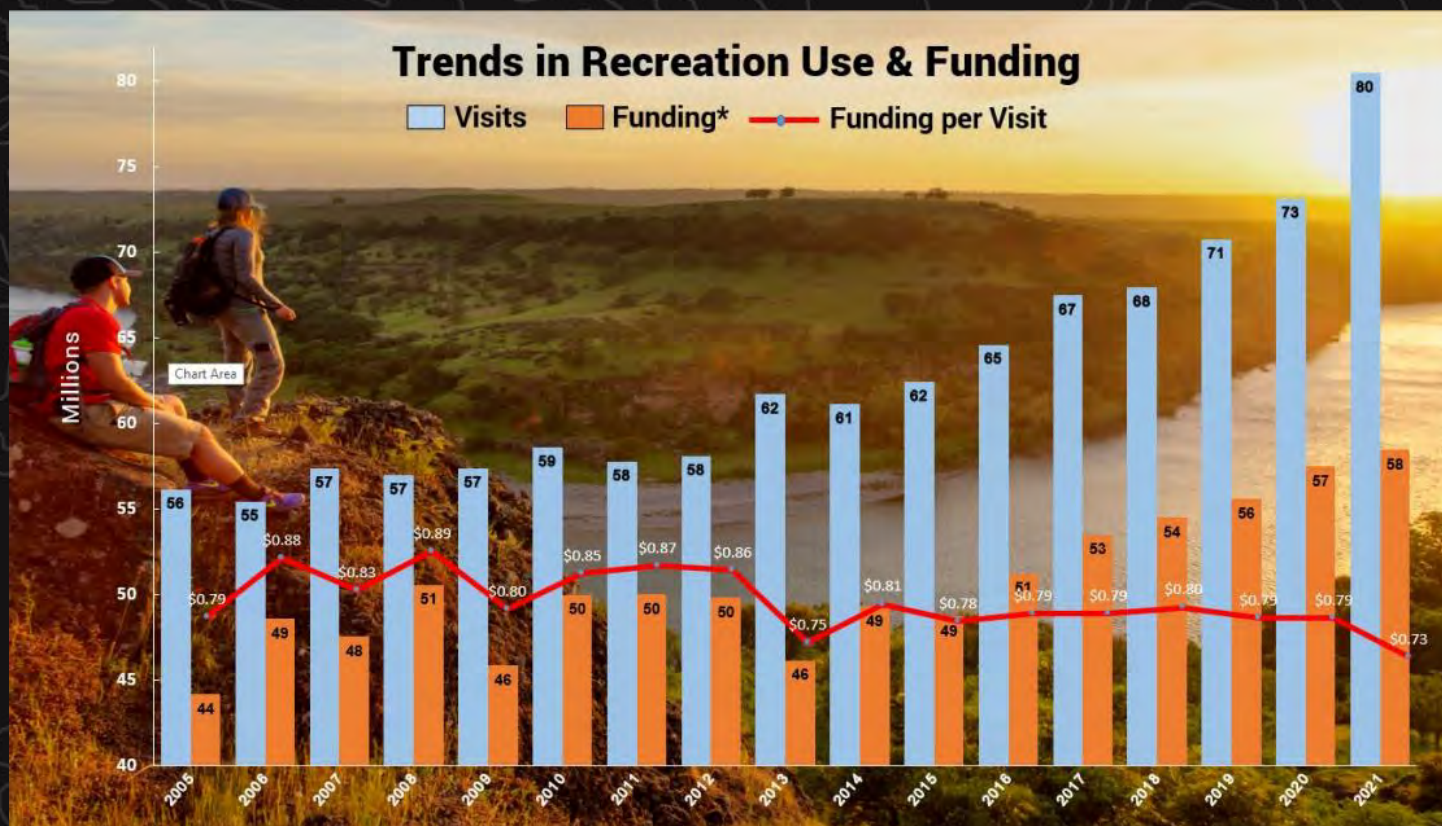
# RGFO Keep Colorado Wild Pass Partnership - A Thought Experiment -



47% increase since 2011



# RGFO Keep Colorado Wild Pass Partnership - A Thought Experiment -

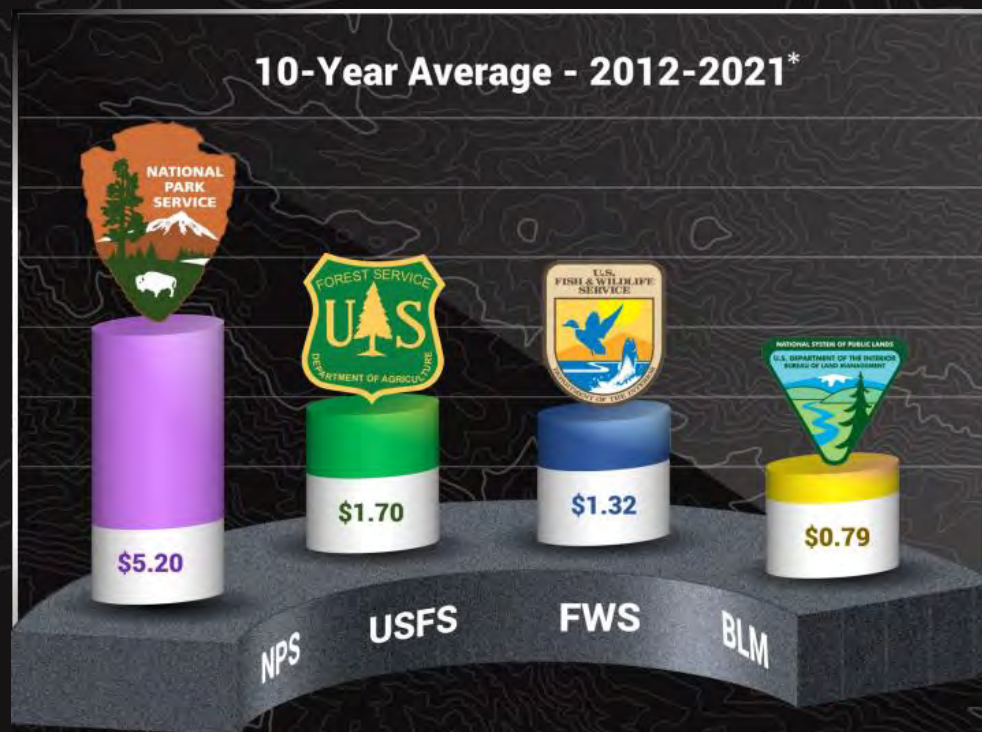




# RGFO Keep Colorado Wild Pass Partnership

## - A Thought Experiment -

### Funding Per Visitor





# Questions?

**Kalem Lenard**

**Assistant Field Manager/**

**Browns Canyon National Monument Manager**

**Royal Gorge Field Office**

**[jlenard@blm.gov](mailto:jlenard@blm.gov)**

**719-433-8486**