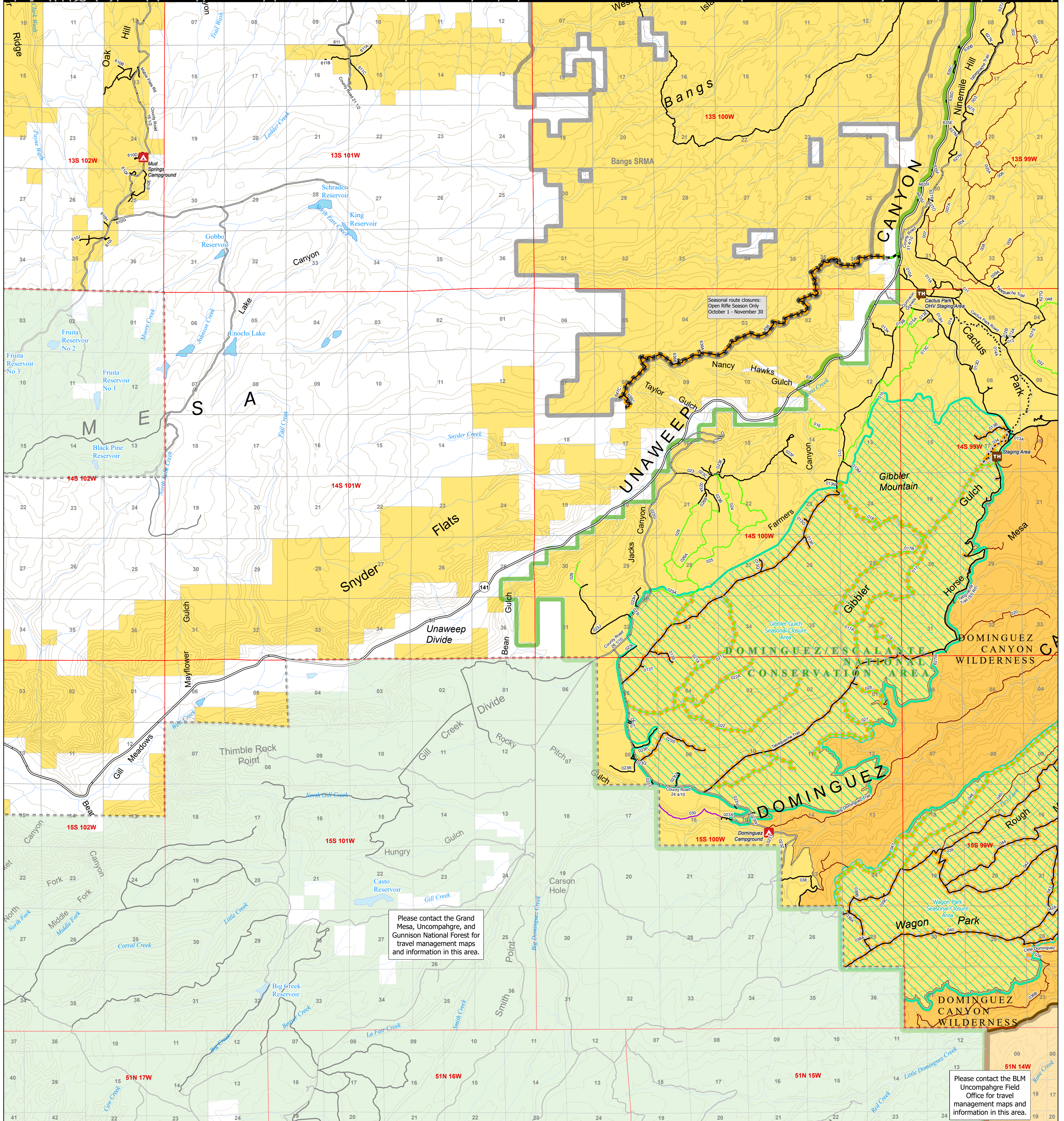




**U.S. DEPARTMENT OF THE INTERIOR
BUREAU OF LAND MANAGEMENT
Grand Junction Field Office**

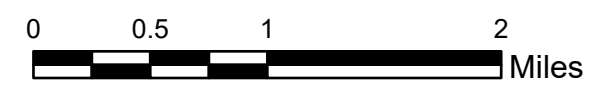
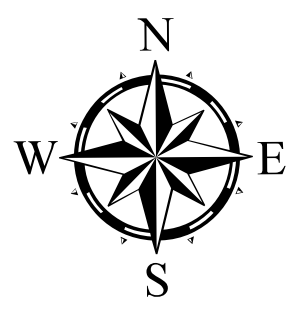
COLORADO

Travel Management Map 13 : UnawEEP



Please contact the Grand Mesa, Uncompahgre, and Gunnison National Forests for travel management maps and information in this area.

Please contact the BLM Uncompahgre Field Office for travel management maps and information in this area.



- Campground
- Trailhead
- State and US Highways
- County Maintained Roads
- Routes without BLM jurisdiction
- BLM Road and Trail Designations**
- Open to Equestrian and Hiking Only
- Open to Hiking Only
- Open to all modes of transportation
- Open to Motorcycles, Bikes, Hikers, and Equestrians
- Open to ATV (<50 in), Motorcycles, Bikes, Hikers, and Equestrians
- Open to Bikes, Hikers, and Equestrians
- Undesignated
- Public easement across private land
- Routes with seasonal restrictions
 - Closed December 1 - May 1
 - Closed December 1 through April 30
 - Open during big game rifle season only
- Seasonal Closure Areas
- County Boundaries
- Special Recreation Management Area (SRMA)
- BLM Grand Junction Field Office
- BLM National Monuments and National Conservation Areas
- BLM Wilderness Areas
- Bureau of Land Management
- Undesignated
- US Forest Service

Note: existing disturbance on the ground not shown on this map is not authorized for travel except foot/horse in most areas unless otherwise noted.

For more detailed recreation maps see the maps for each Special Recreation Management Area (SRMA) and Extensive Recreation Management Areas (ERMA)

Seasonal closure areas:
Wagon Park : December 1 - April 30,
Gibbler Gulch : December 1 - April 30,
See individual route in Nancy Hawks Gulch area : see note on map for closure dates

